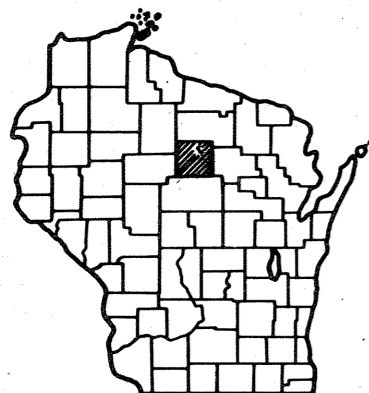


**Index of Sheets**

Sheet No. 1	Title
Sheet No. 2.1	Typical Cross Sections
Sheet No. 3	Estimate of Quantities
Sheet No. 3	Miscellaneous Quantities
Sheet No. -	Right of Way Plat
Sheet No. 5-5.2	Plan and Profile
Sheet No. 6-6.3	Standard Details
Sheet No. -	Structure Plans
Sheet No. -	Computer Earthwork Data
Sheet No. -	Cross Sections

TOTAL SHEETS = 11



**Design Designation**

A.D.T. (1978)	= 5,480
A.D.T. (1998)	= 9,135
D.H.V.	= 1,370
D.	= 65/35
T.	= 9%
V.	= 60MPH.

**Conventional Signs**

County Line	— — — — —
Township or Range Line	- - - - -
Section Line	· · · · ·
New Right of Way Line	— — — — —
Present Right of Way Line	— — — — —
Wire Fence	x (type) x
Corporate or City Limits	///
Property Line	P.L.
Traveled Way or P.E.	— — — — —
Railroads	— — — — —
Base or Survey Line	— — — — —
Caution Symbol (combustible fluids under pressure)	

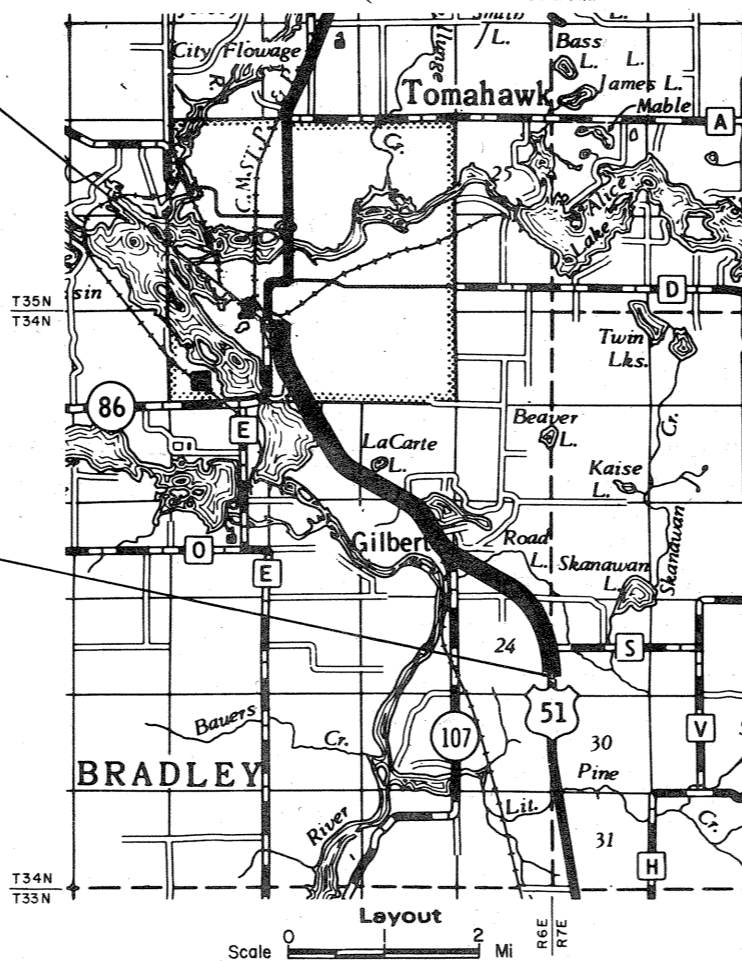
Culverts in Place	— — — — —
Culverts Required	— — — — —
Drop Inlet	□
Power Pole	■
Telephone or Telegraph Pole	■
Right of Way Markers	— — — — —
Reference Stake for Hubs Only	+61.7 25.9
Marsh	
Hedge	
Trees	
Ground Elevation	Datum Line
Grade Elevation	Datum Line

STATE OF WISCONSIN  
**DEPARTMENT OF TRANSPORTATION**  
**DIVISION OF HIGHWAYS**

PLAN AND PROFILE OF PROPOSED  
**IRMA-TOMAHAWK ROAD**  
 C.T.H. "S"—S.T.H. 86  
**U.S.H. 51**  
**LINCOLN COUNTY**

STATE PROJECT NUMBER  
**1173-6-70**

Scales  
 Plan 1 in. = 100 ft.  
 Profile Hor. 1 in. = 100 ft. Vert. 1 in. = 10 ft.  
 Cross Sections Hor. 1 in. = Vert. 1 in. =



Total Net Length of Centerline = 4.962 Mi.

STATE PROJECT	FEDERAL PROJECT	
	PROJECT	CONTRACT
1173-6-70	RS 132(1)	I

STATE OF WISCONSIN  
 DEPARTMENT OF TRANSPORTATION  
 DIVISION OF HIGHWAYS

Surveyor R.B.J. District Checker E.S.A.  
 Designer D.L.J. C. O. Checker R.A.H.  
 District Supervisor P.M.J. C. O. Monitor H.H.B.

Approved: \_\_\_\_\_  
 Date 4/24/77 R.D. Schimbeck  
 District Engineer

Approved: \_\_\_\_\_  
 Date 9-2-77 D.D. Strand  
 Chief of Facilities Development

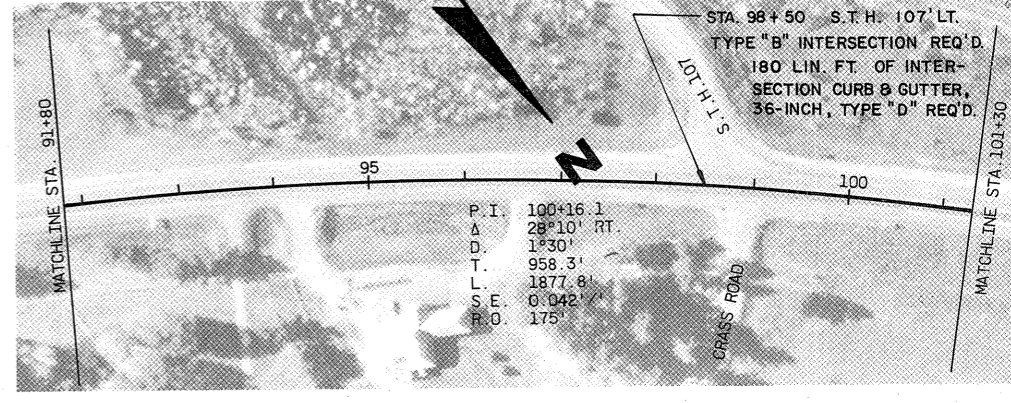
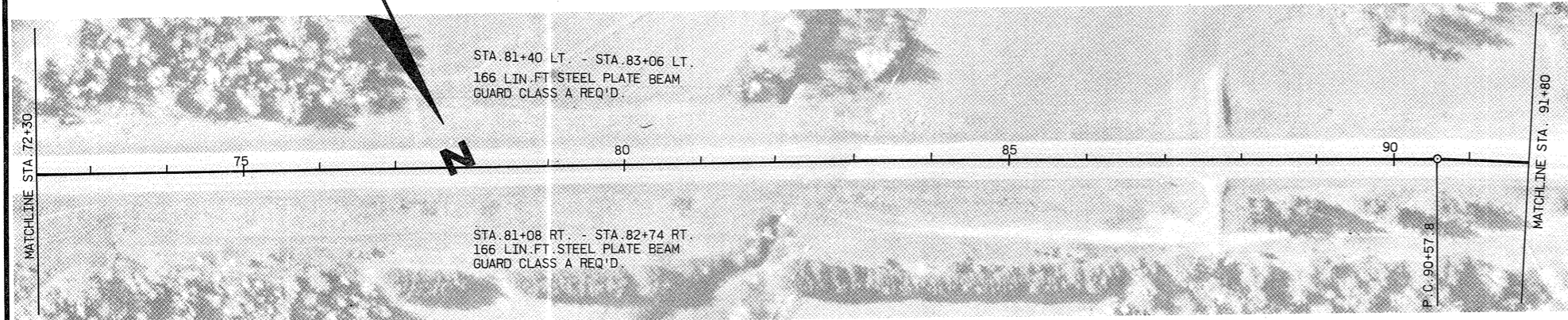
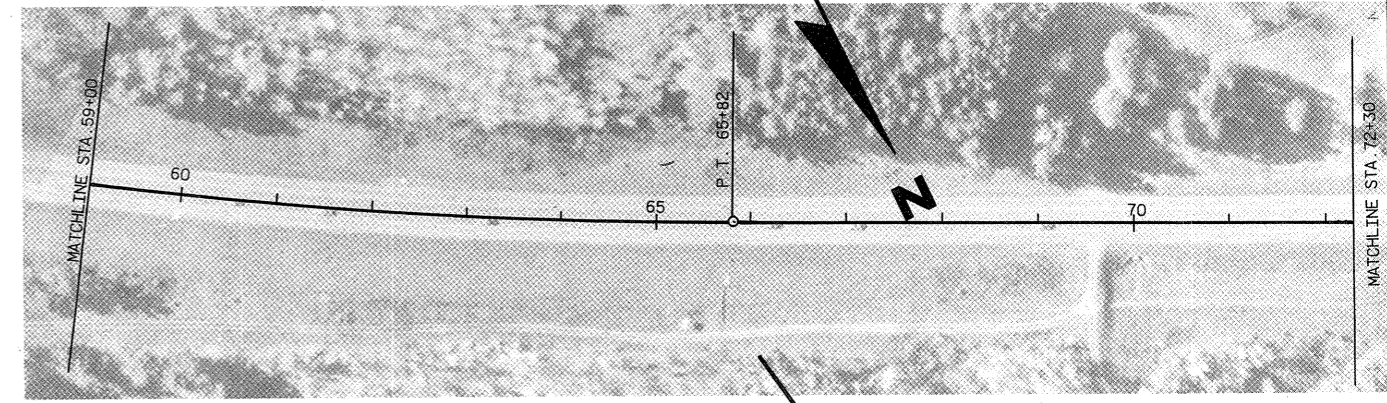
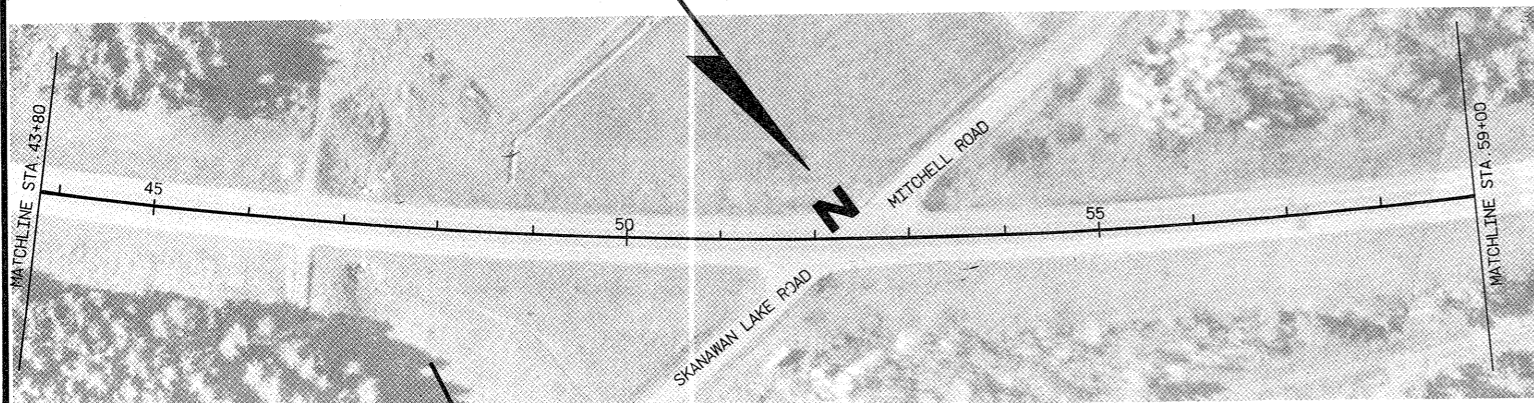
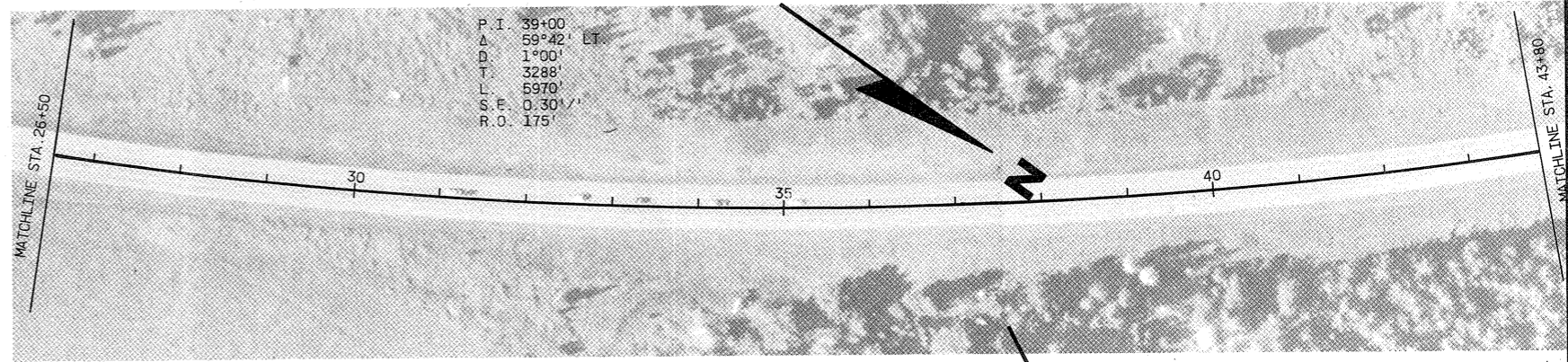
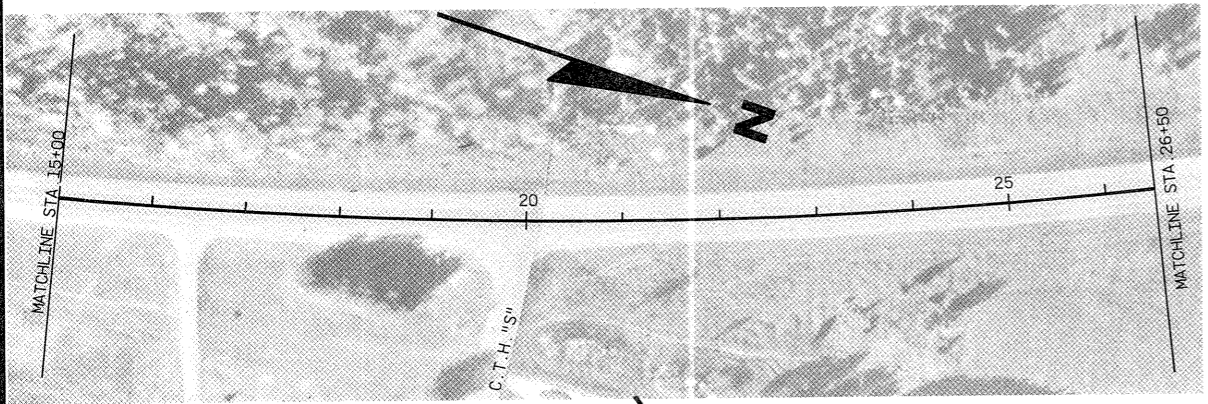
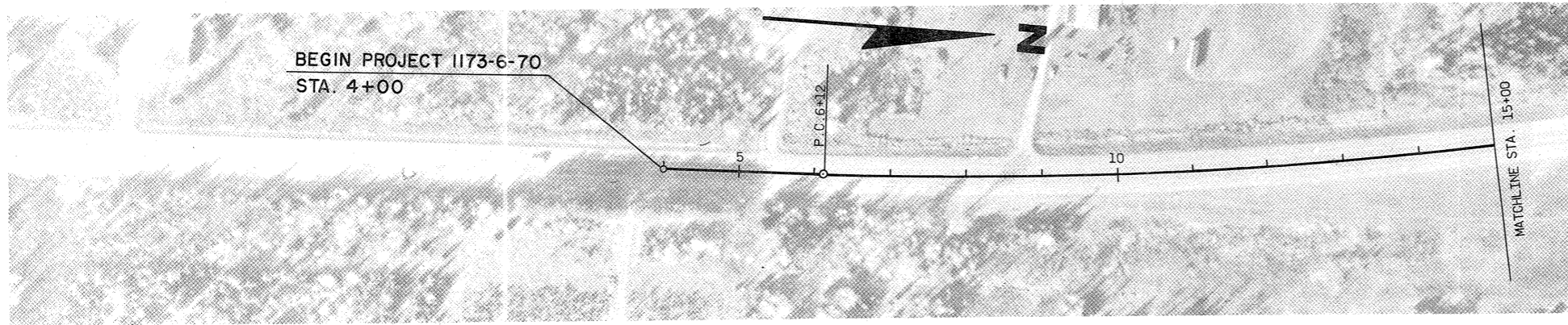
Approved: \_\_\_\_\_  
 Date 9-7-77 H. J. Sieder  
 State Highway Engineer

U.S. DEPARTMENT OF TRANSPORTATION  
 FEDERAL HIGHWAY ADMINISTRATION  
 REGION 5 WISCONSIN DIVISION

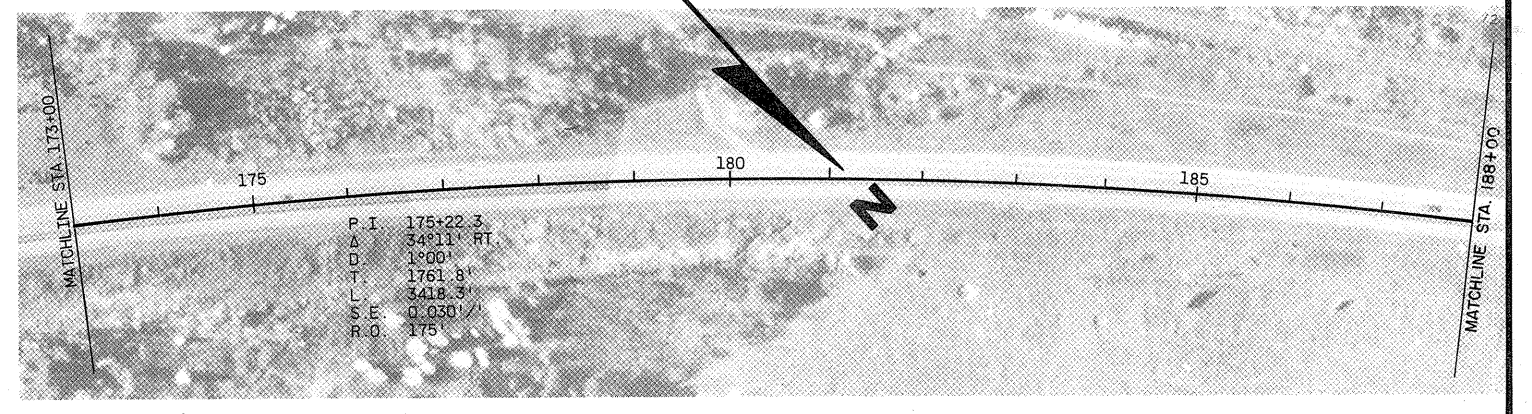
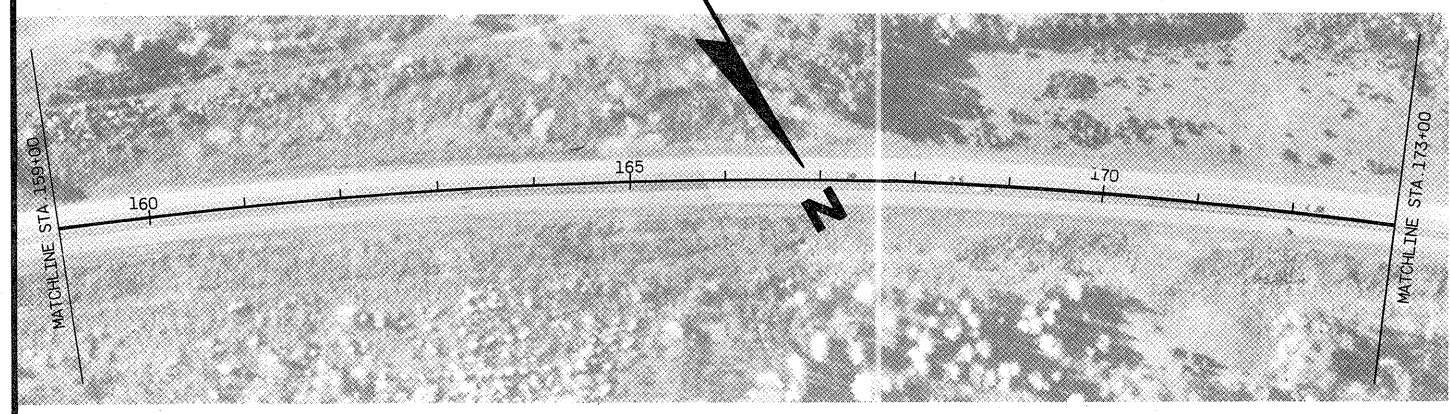
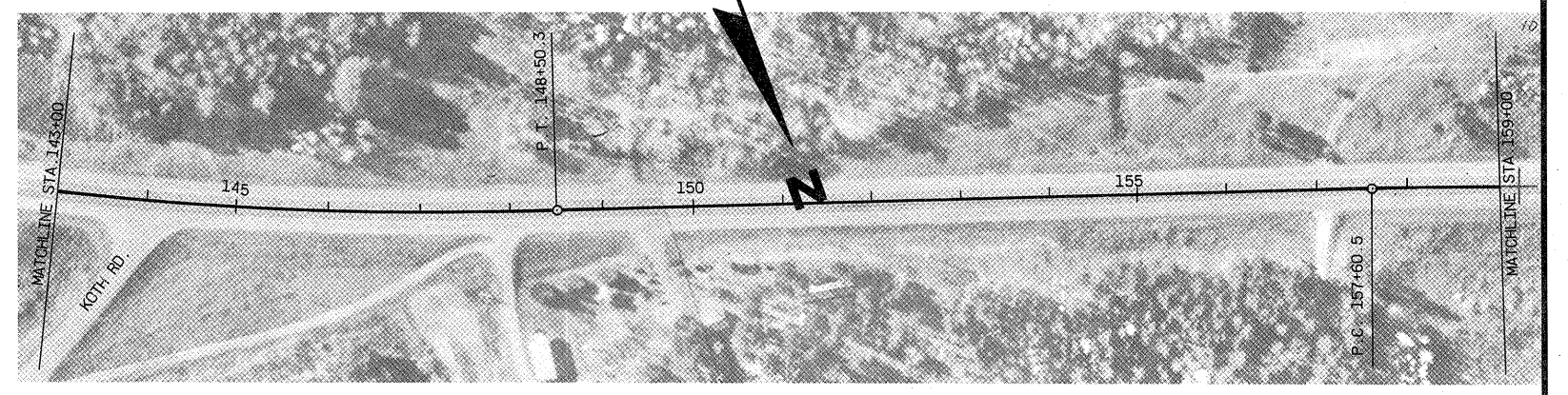
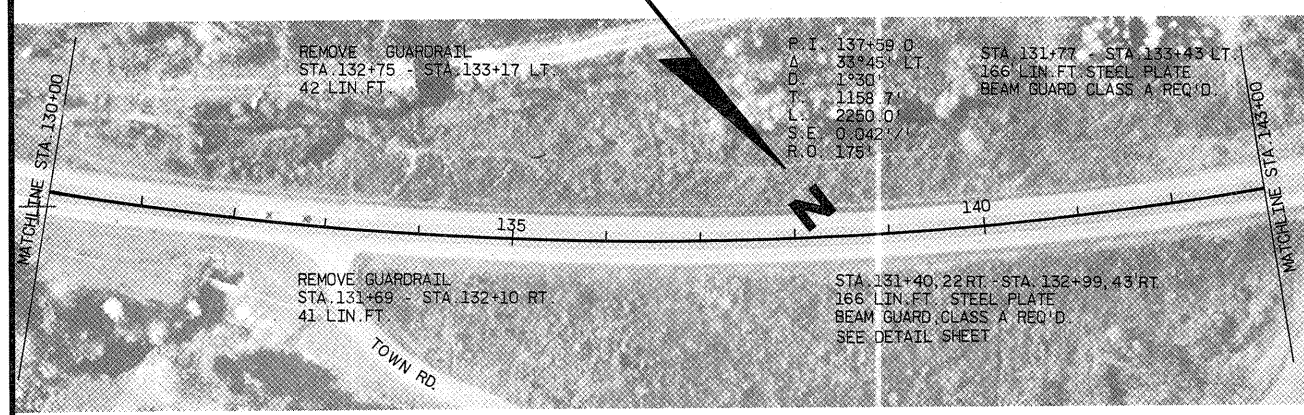
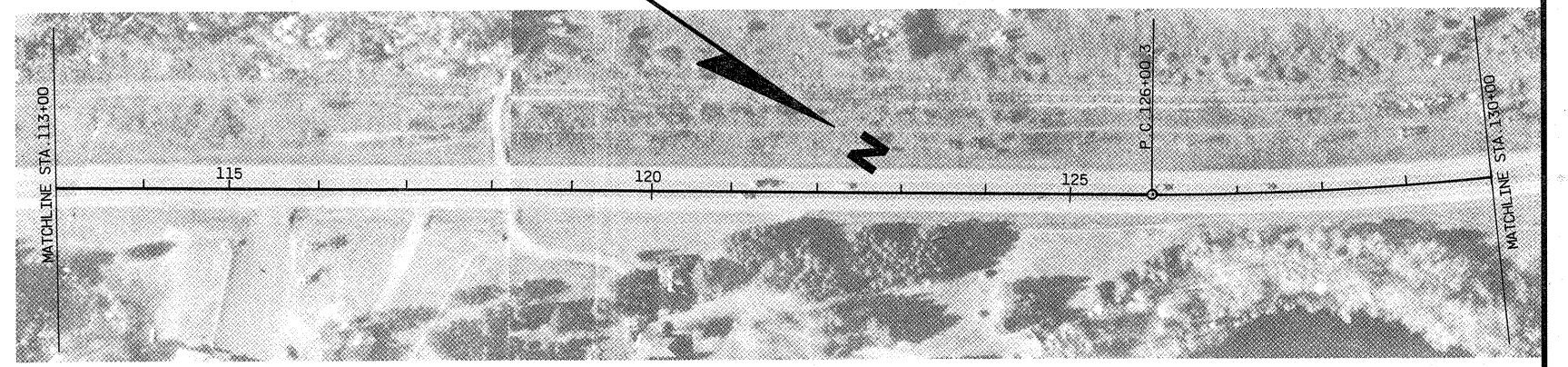
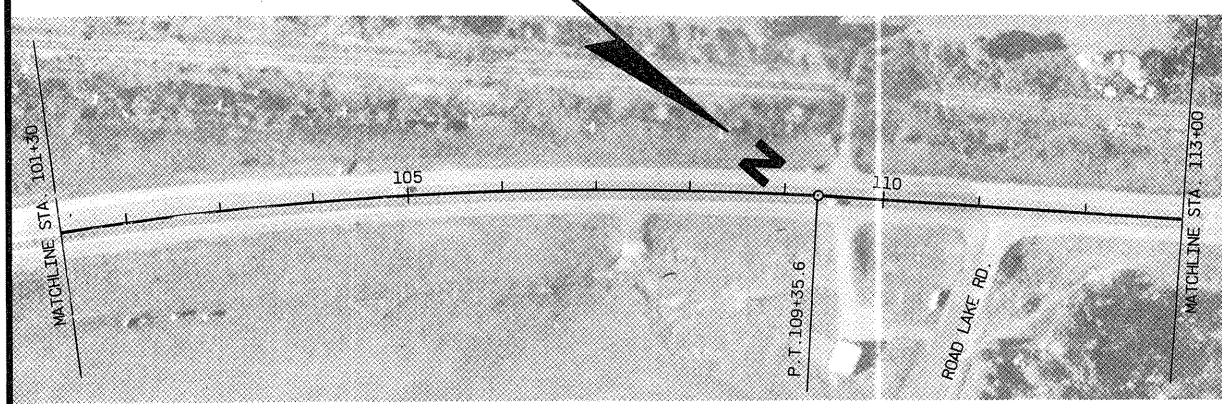
Approved: \_\_\_\_\_  
 Date \_\_\_\_\_  
 Division Engineer

\* SCALED FROM U.S.G.S. TOPOGRAPHIC MAP, TOMAHAWK (NW) WISCONSIN QUADRANGLE FOR IDENTIFICATION ONLY.

PROJECT DESIGNATION	SHEET NO.
1173-6-70	5
PLAN SHEET	
STA. 4+00 - STA. 101+30	
U.S.H. 51	FOR LINCOLN COUNTY



PROJECT DESIGNATION 1173-6-70	SHEET NO. 51
PLAN SHEET STA. 101+30 - STA. 188+00 FOR LINCOLN COUNTY	
U.S.H. 51	



PROJECT DESIGNATION	SHEET NO.
1173-6-70	5.2
PLAN SHEET	
STA. 188+00 - STA. 266+00	
U.S.H. 51	LINCOLN COUNTY

