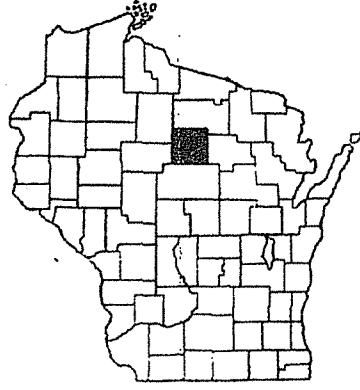


**INDEX OF SHEETS**

- SHEET NO. 1 TITLE
- SHEET NO. 1 TYPICAL CROSS SECTIONS
- SHEET NO. 2 ESTIMATE OF QUANTITIES
- SHEET NO. 2 MISCELLANEOUS QUANTITIES
- SHEET NO. — RIGHT OF WAY PLAT
- SHEET NO. 3-16 PLAN AND PROFILE STA. 0+00 TO STA. 417+10
- SHEET NO. 17-21 STANDARD DETAILS
- SHEET NO. — DRAINAGE STRUCTURES
- SHEET NO. 22-24 CROSS SECTIONS



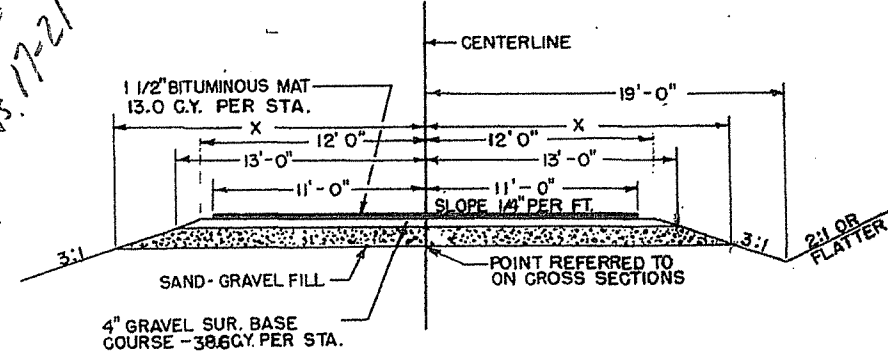
STATE OF WISCONSIN  
**STATE HIGHWAY COMMISSION OF WISCONSIN**

PLAN AND PROFILE OF PROPOSED  
**S.T. HIGHWAY 17 — EAST COUNTY LINE ROAD**  
**C.T. HIGHWAY "C"**  
**LINCOLN COUNTY**  
**PROJECT S 0192(4)**

COUNTY AND HIGHWAY	ROUTE AND SECTION	CLASS AND AGREEMENT		FEDERAL DIVISION OFFICE	SHEET NUMBER	TOTAL SHEETS
35.6	192.0	STATE	FEDERAL	WIS. 5 N	1	24

PLAN 1 IN. = 100 FT.  
PROFILE HOR. 1 IN. = 100 FT. VERT. 1 IN. = 10 FT.  
CROSS SECTIONS HOR. 1 IN. = 5 FT. VERT. 1 IN. = 5 FT.

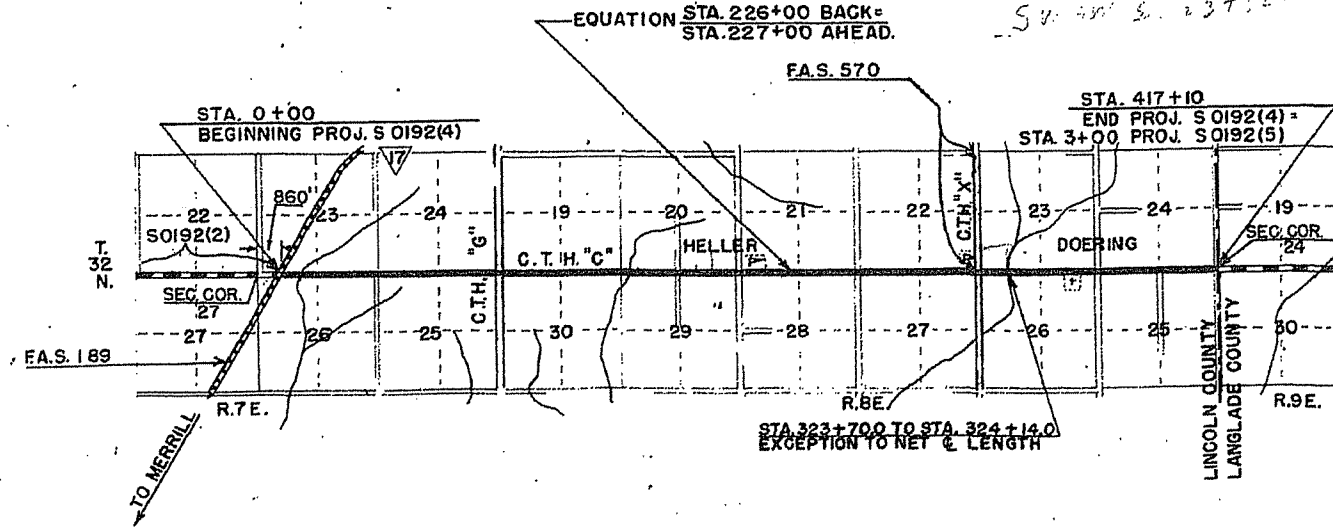
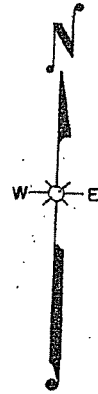
Cross Sections Missing  
Shts. 17-21



TYPICAL FINISHED SECTION 4" - 6" - 12" S & G FILL  
SEE MISCELLANEOUS QUANTITY SHEET FOR LOCATION

DEPTH S & G FILL	X	C.Y. PER STA.
4"	14'-0"	41.7
6"	14'-6"	63.6
12"	16'-0"	134.0

- STANDARD DETAIL DRAWINGS ARE AS FOLLOWS:
- |  |         |
|--|---------|
| DRAWING NO.                                    |         |
| DETAILS OF PRIVATE ENTRANCE & SIDE ROAD APPRS. | 1-3.1.1 |
| C.G.S.M. PIPE ARCH                             | 6-5.1.2 |
| MARKER POSTS FOR CULVERTS                      | 7-1.1.1 |
| CONSTRUCTION BARRIAGE                          | 7-4.1.1 |
| SECTIONAL PLATE PIPE ARCH                      | 6+5.2.1 |



**CONVENTIONAL SIGNS**

- STATE LINE
- COUNTY LINE
- TOWNSHIP OR RANGE LINE
- SECTION LINE
- NEW RIGHT OF WAY LINE
- PRESENT RIGHT OF WAY LINE
- WIRE FENCE { WOVEN, BARBED }
- LOT LINE
- CORPORATE OR CITY LIMITS
- PROPERTY LINE
- TRAVELED WAY OR P.E.
- RAILROADS
- BASE OR SURVEY LINE

- CULVERTS IN PLACE
- CULVERTS REQUIRED
- DROP INLET
- POWER POLE
- TELEPHONE OR TELEGRAPH POLE
- RIGHT OF WAY MARKERS
- REFERENCE STAKE FOR HUBS ONLY
- MARSH
- HEDGE
- TREES
- GROUND ELEVATION
- GRADE ELEVATION

**LAYOUT**

SCALE 1" = 1 MILE

TOTAL NET LENGTH OF CENTERLINE = 7.872 MI.

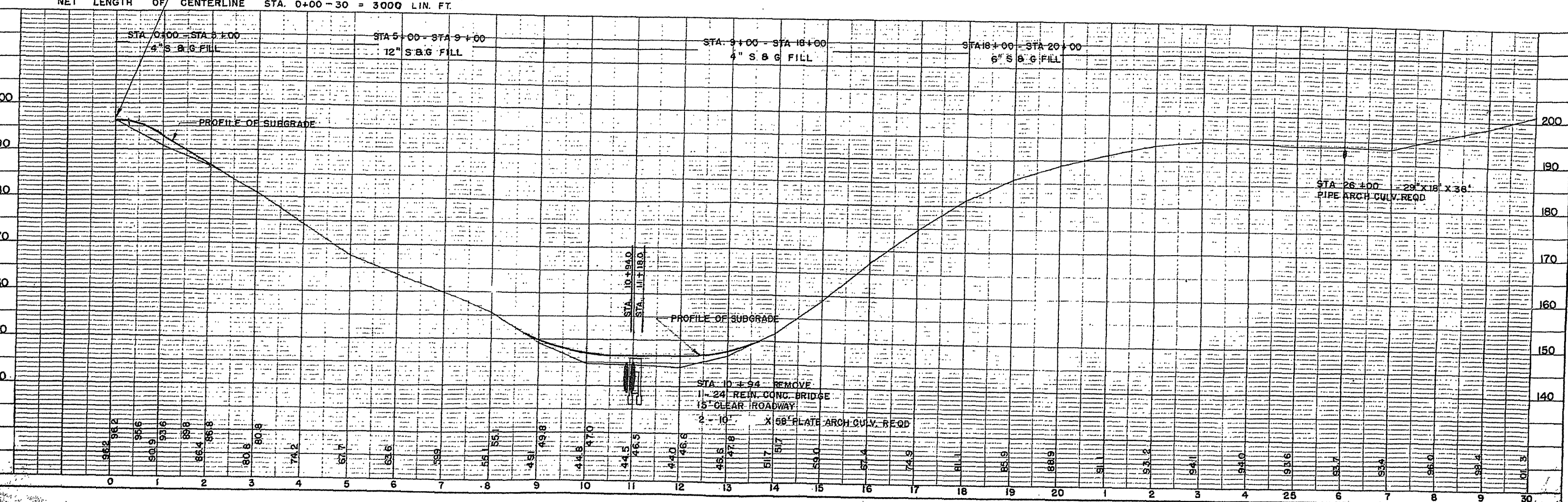
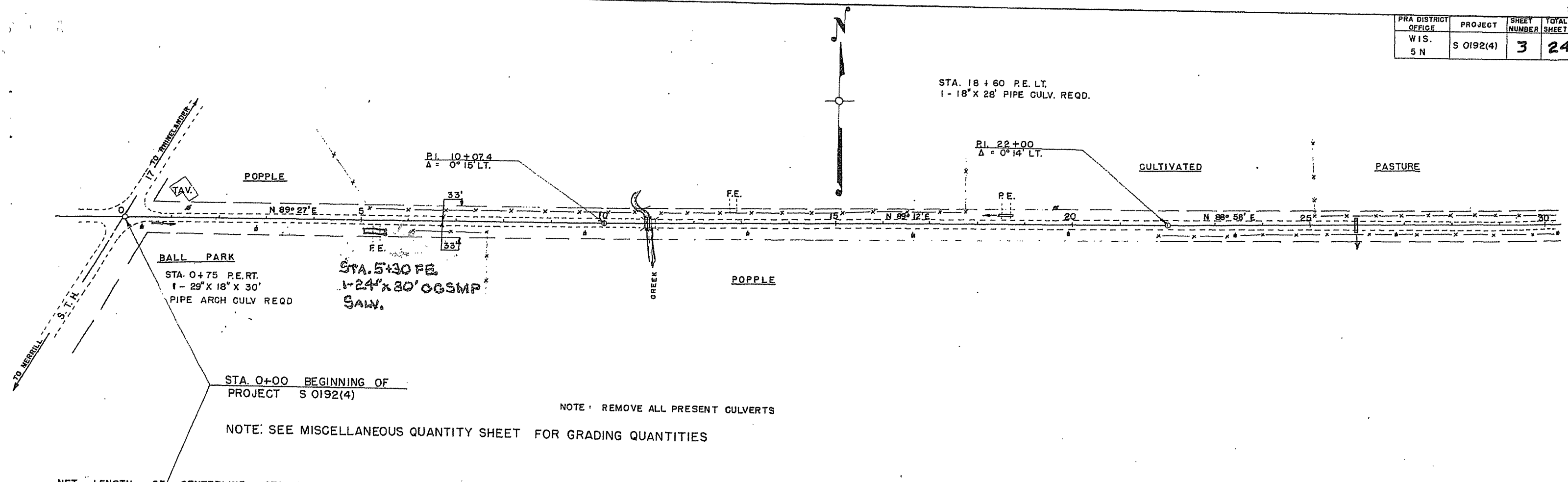
APPROVED FOR LINCOLN COUNTY:

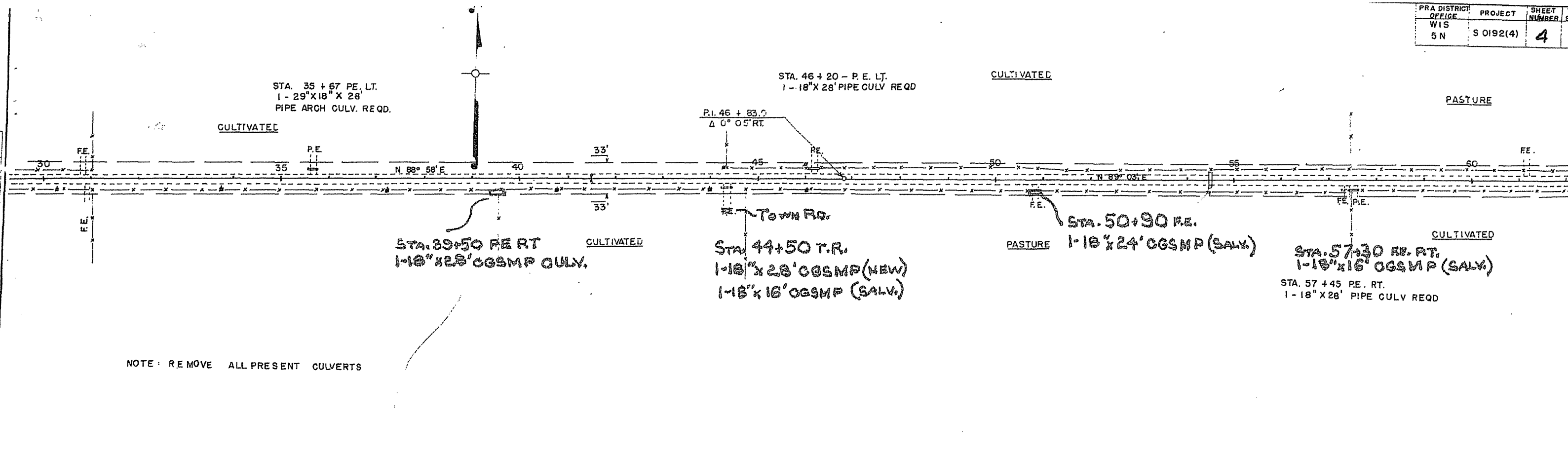
FEB. 14, 1950  
FEB. 14, 1950  
FEB. 14, 1950  
DATE

*Geo. J. Thailer*  
*W. Benschel*  
*Albert P. Gennick*  
LINCOLN COUNTY HIGHWAY COMMITTEE

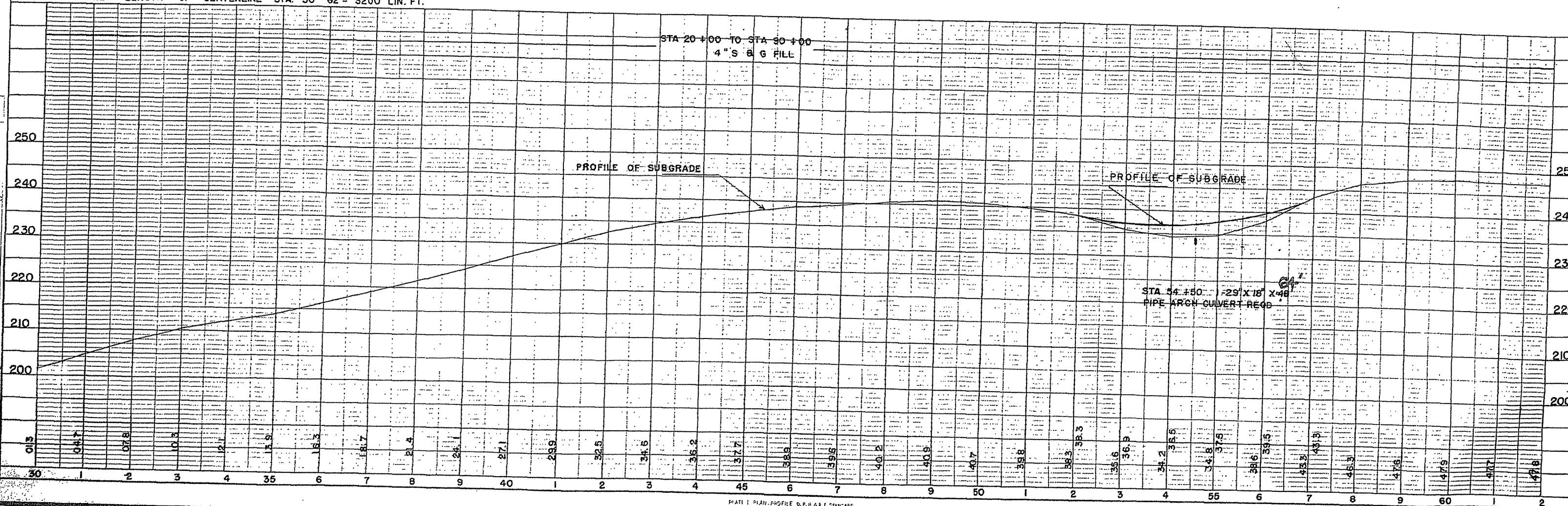
<p>STATE HIGHWAY COMMISSION OF WISCONSIN MADISON, WIS.</p> <p>SURVEYOR: <u>HOSTETLER</u> NOTE BOOK: <u>8292-8293</u> DIVISION COMPUTER: <u>ELTZE</u> M. O. CHECKER DIVISION CHECKER: <u>CORRECT</u></p> <p>CORRECT: DATE: <u>2/16/50</u> <i>E. J. Hostetler</i> DIVISION ENGINEER</p> <p>RECOMMENDED FOR APPROVAL: DATE: <u>2/14/50</u> <i>W. Benschel</i> CONSTRUCTION ENGINEER</p> <p>APPROVED: DATE: <u>2/16/50</u> <i>E. C. Rustin</i> STATE HIGHWAY ENGINEER</p>	<p>FEDERAL WORKS AGENCY PUBLIC ROADS ADMINISTRATION</p> <p>RECOMMENDED FOR APPROVAL:</p> <p>DISTRICT ENGINEER PUBLIC ROADS ADMINISTRATION FEDERAL WORKS AGENCY</p> <p>APPROVED:</p> <p>COMMISSIONER PUBLIC ROADS ADMINISTRATION FEDERAL WORKS AGENCY</p>
---	--





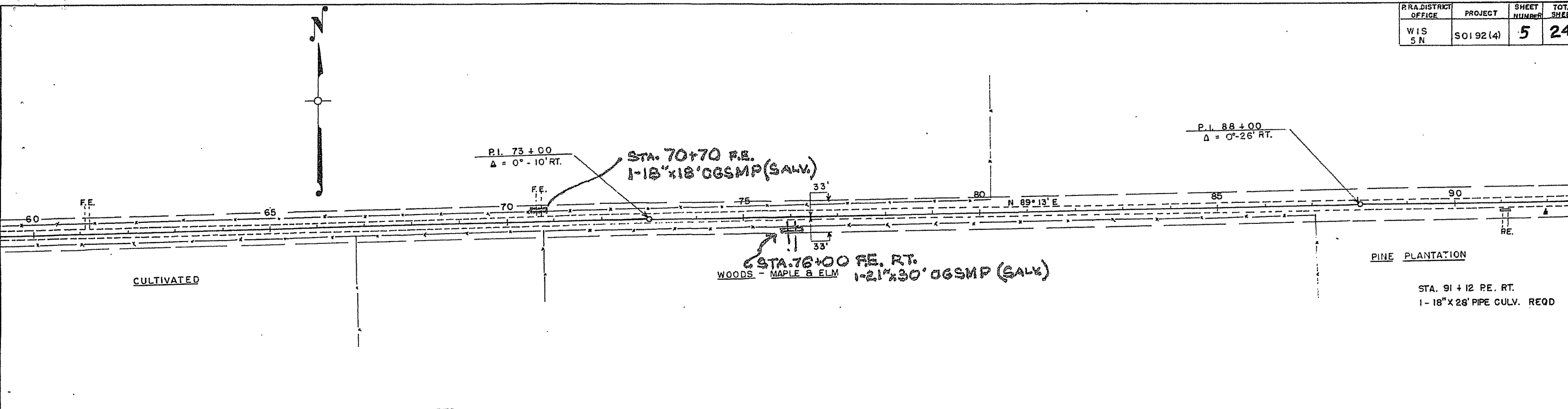


NET LENGTH OF CENTERLINE STA. 30 - 62 = 3200 LIN. FT.



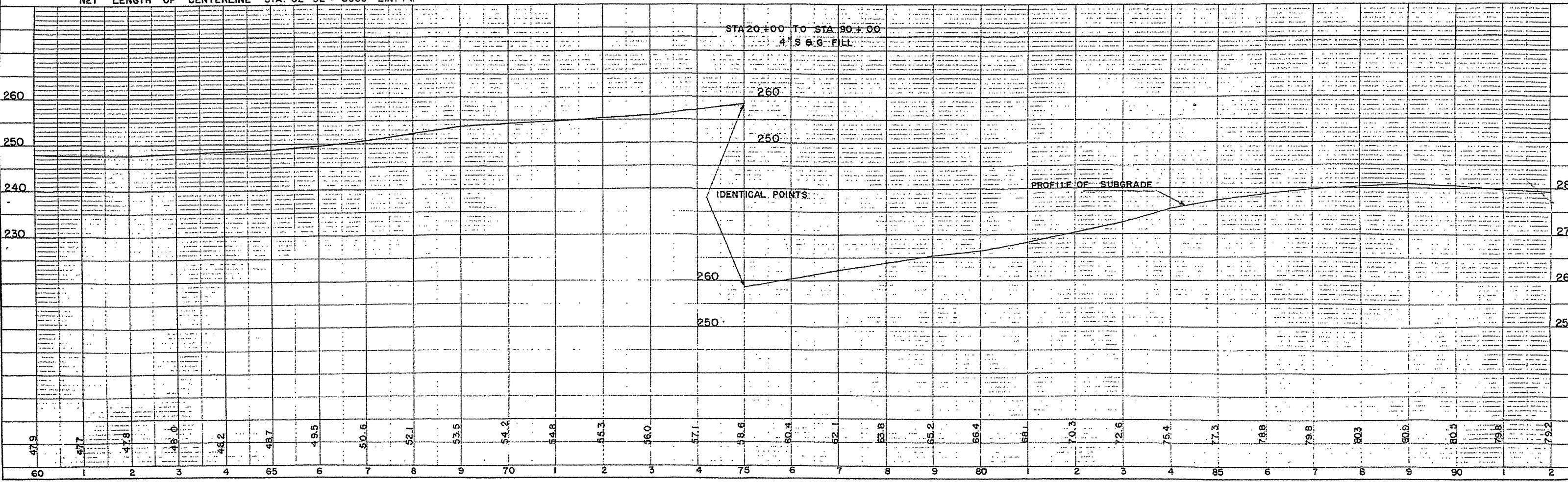
NO. 1000  
 DATE  
 BY  
 CHECKED  
 NO. 1000  
 DATE  
 BY  
 CHECKED

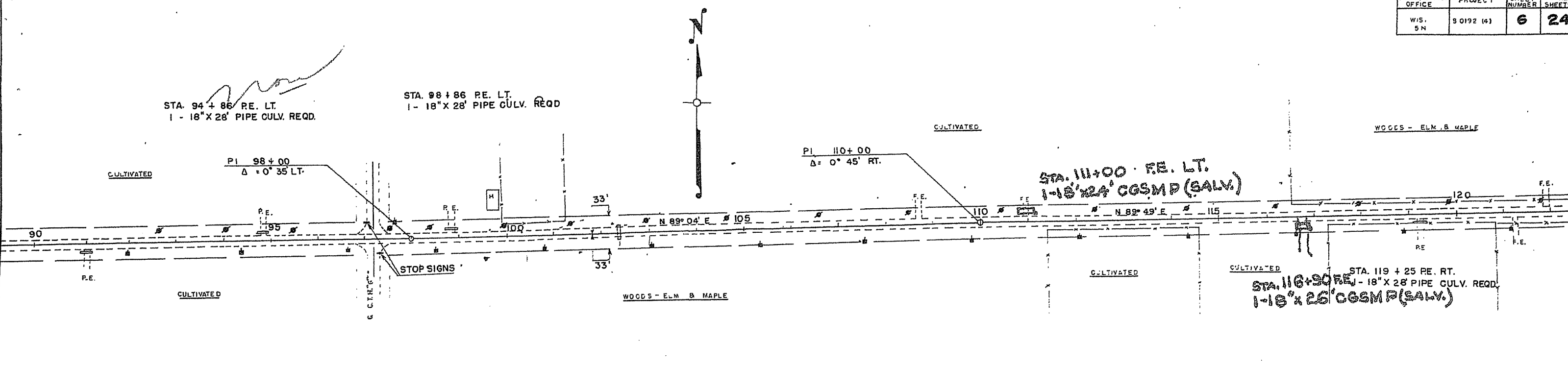
NO. 1000  
 DATE  
 BY  
 CHECKED  
 NO. 1000  
 DATE  
 BY  
 CHECKED



NOTE: REMOVE ALL PRESENT CULVERTS

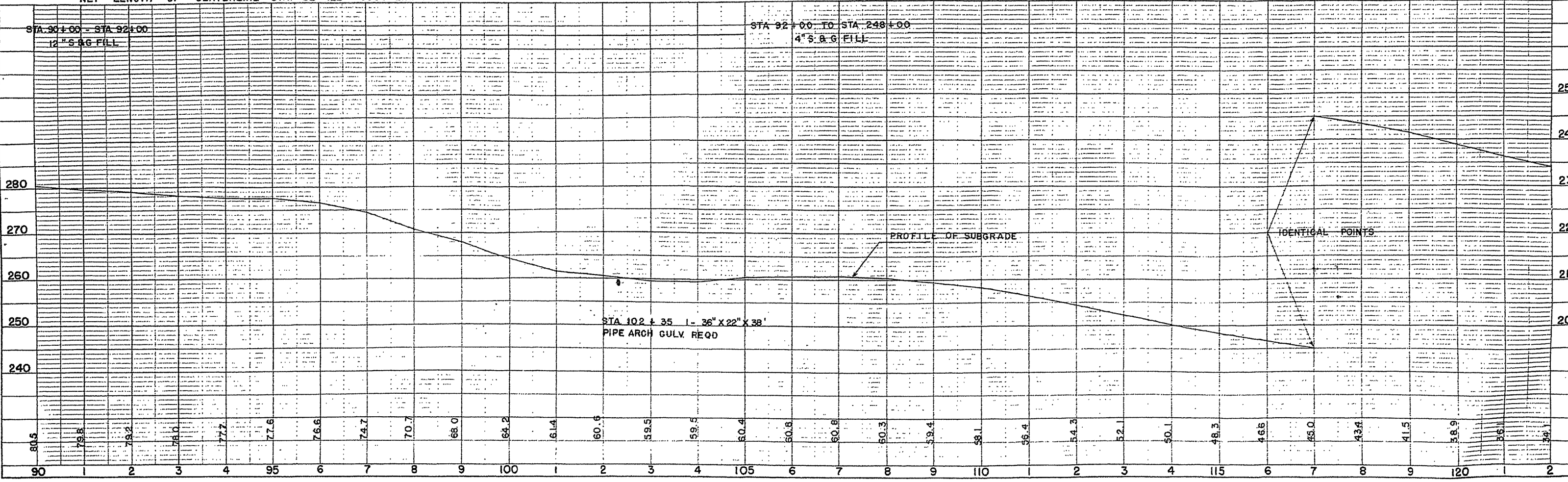
NET LENGTH OF CENTERLINE STA. 62-92 = 3000 LIN. FT.

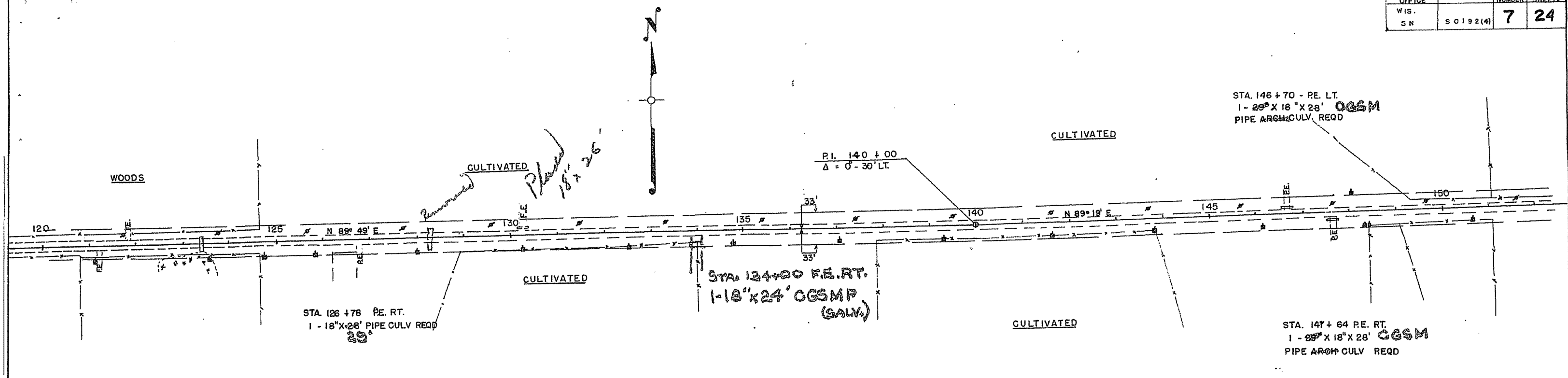




NOTE: REMOVE ALL PRESENT CULVERTS

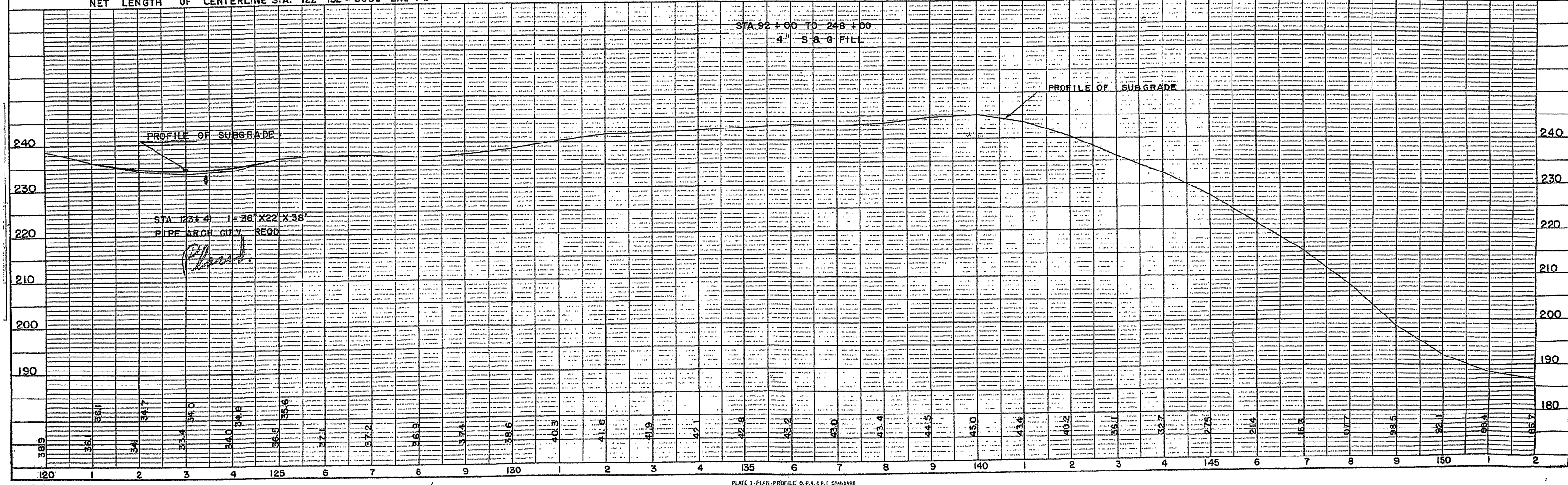
NET LENGTH OF CENTERLINE STA. 92 - 122 = 3000 LIN. FT.



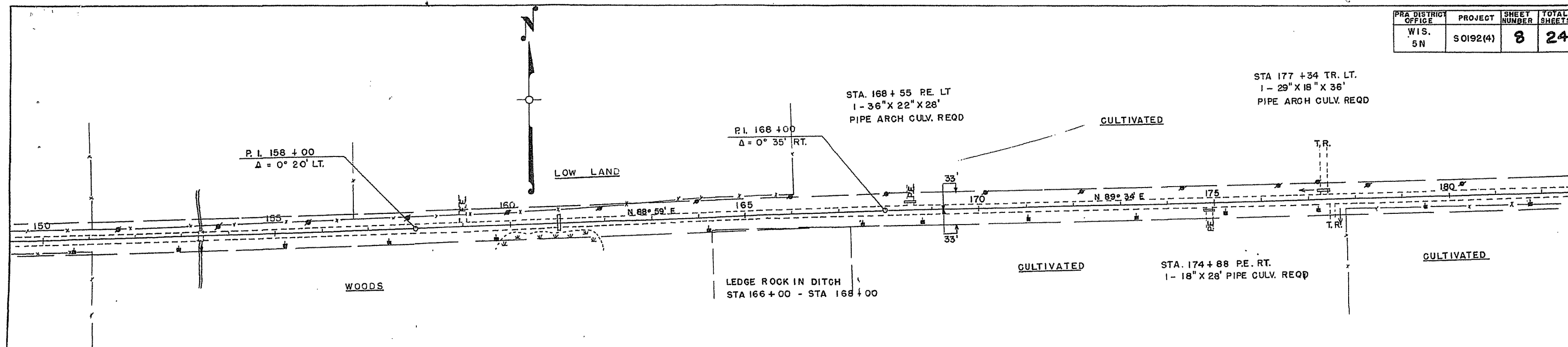


NOTE - REMOVE ALL PRESENT CULVERTS

NET LENGTH OF CENTERLINE STA. 122-152 = 3000 LIN. FT.

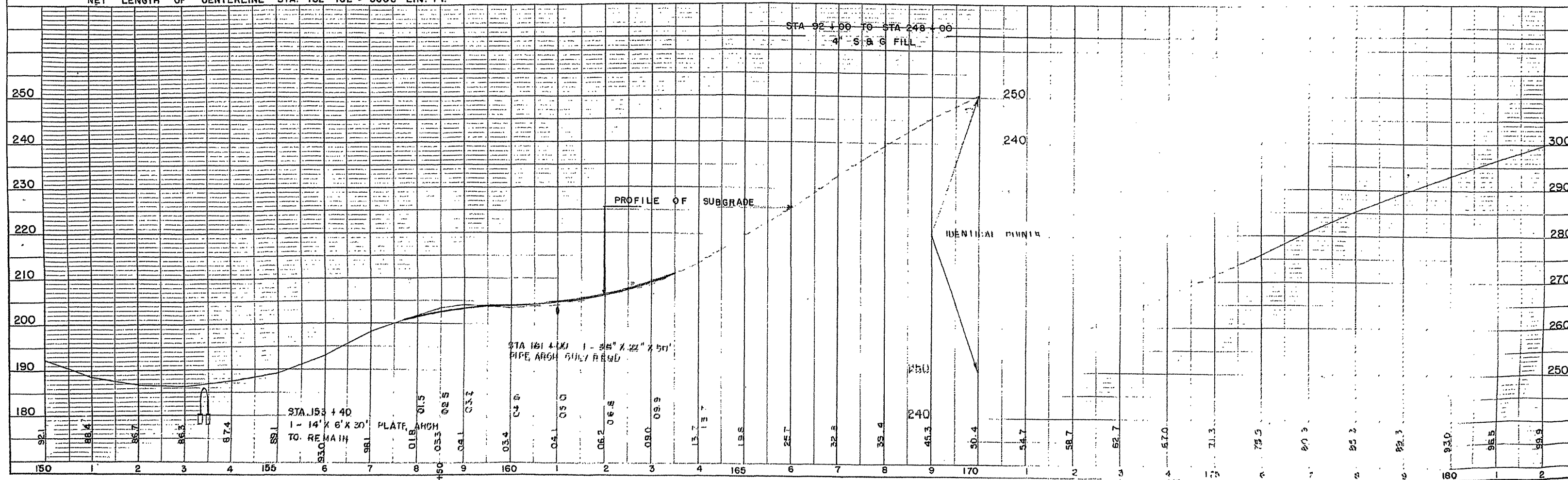


PRA DISTRICT OFFICE	PROJECT	SHEET NUMBER	TOTAL SHEETS
WIS. 5N	SO192(4)	8	24



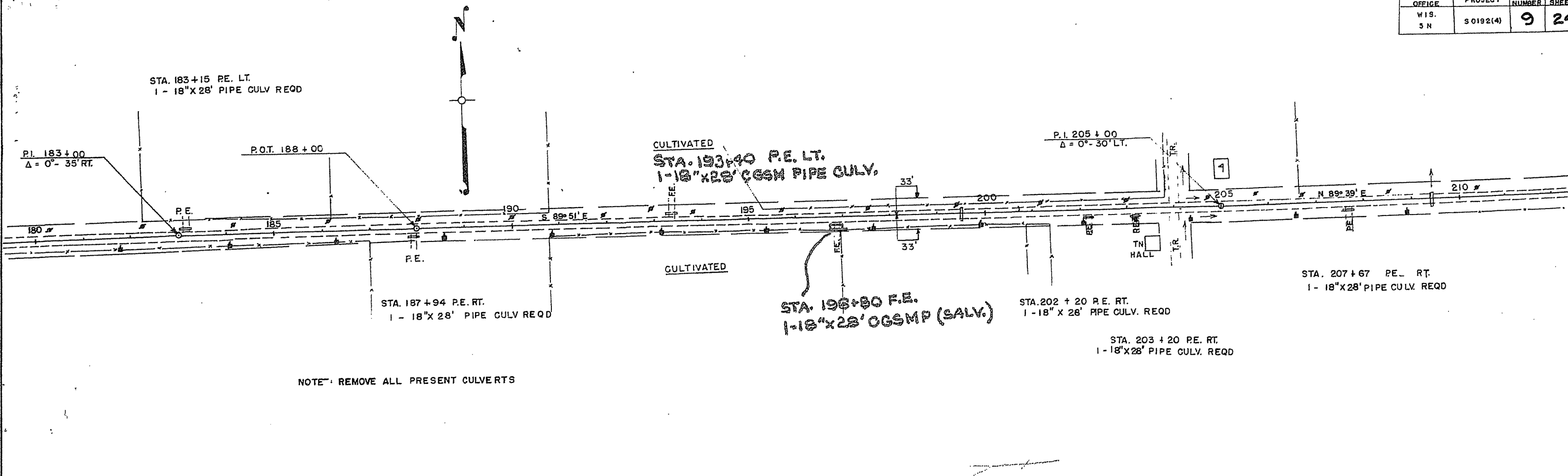
NOTE: REMOVE ALL PRESENT CULVERTS  
EXCEPTION TO NOTE STA 153+40

NET LENGTH OF CENTERLINE STA. 152-182 = 3000 LIN. FT.



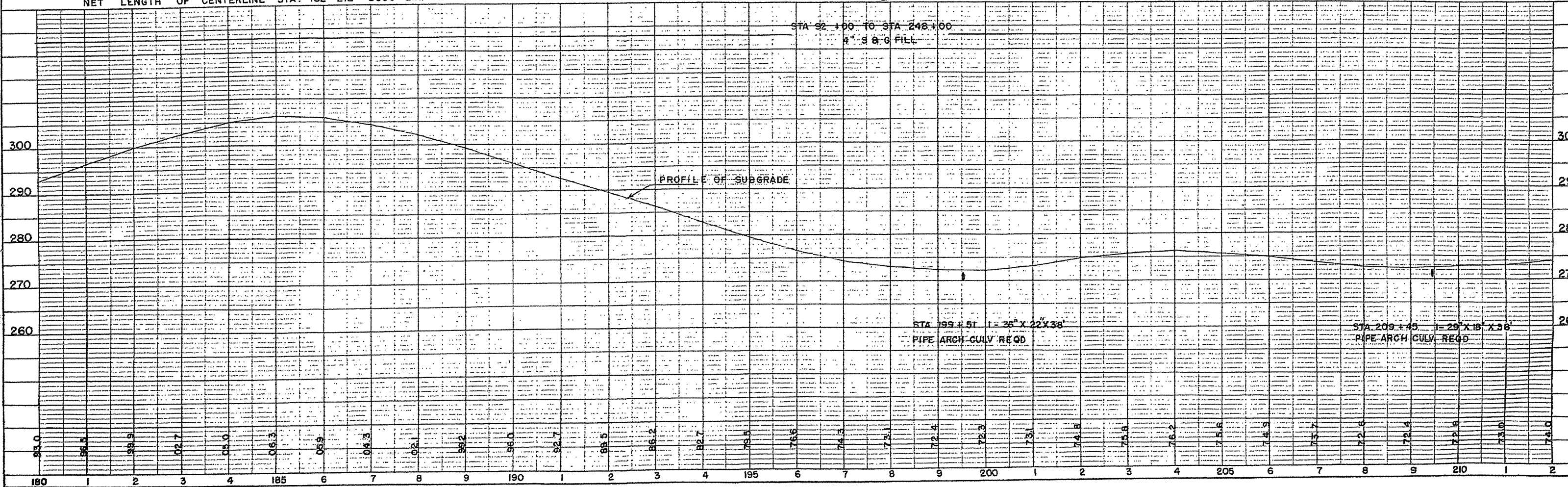


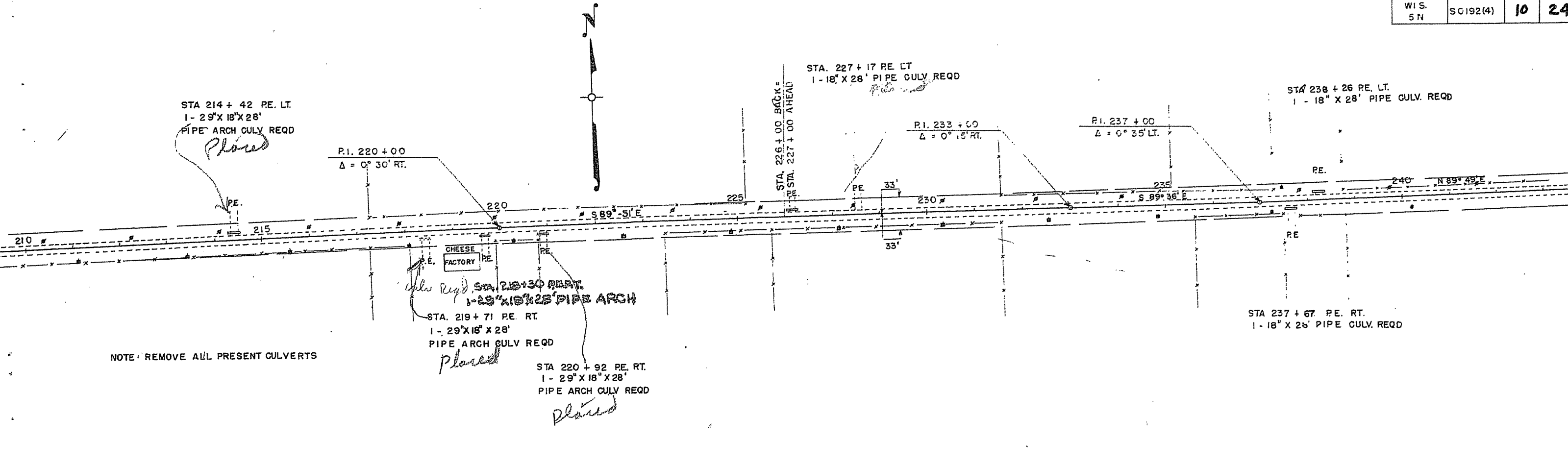
PRA DISTRICT OFFICE	PROJECT	SHEET NUMBER	TOTAL SHEETS
WIS. 5 N	S 0192(4)	9	24



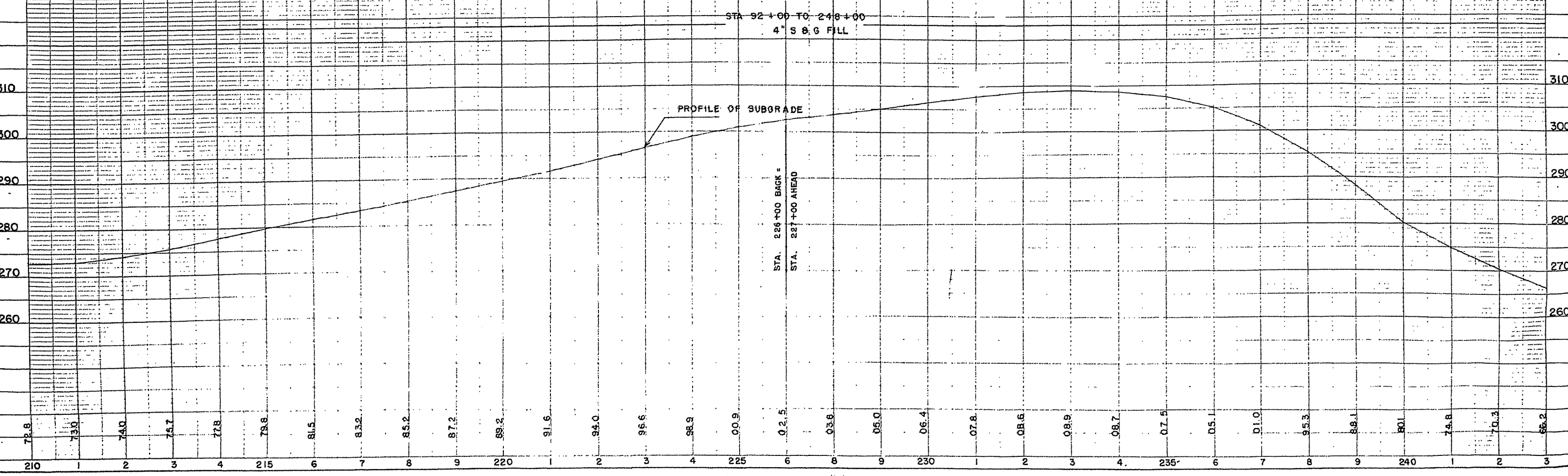
NOTE: REMOVE ALL PRESENT CULVERTS

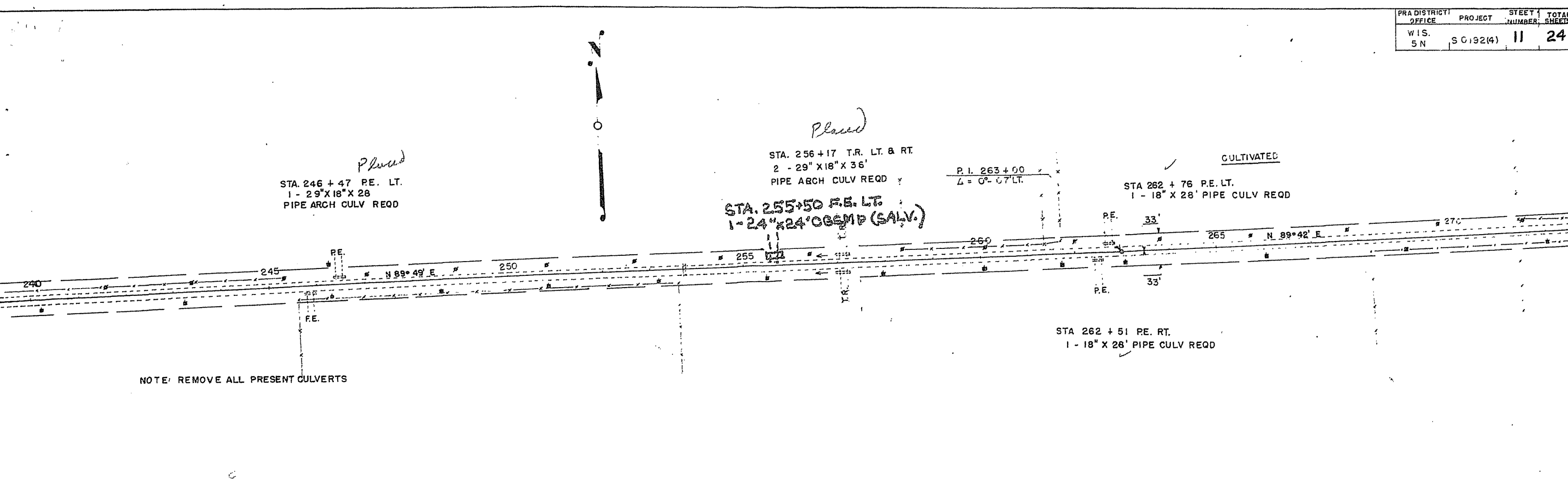
NET LENGTH OF CENTERLINE STA. 182 - 212 = 3000 LIN. FT.





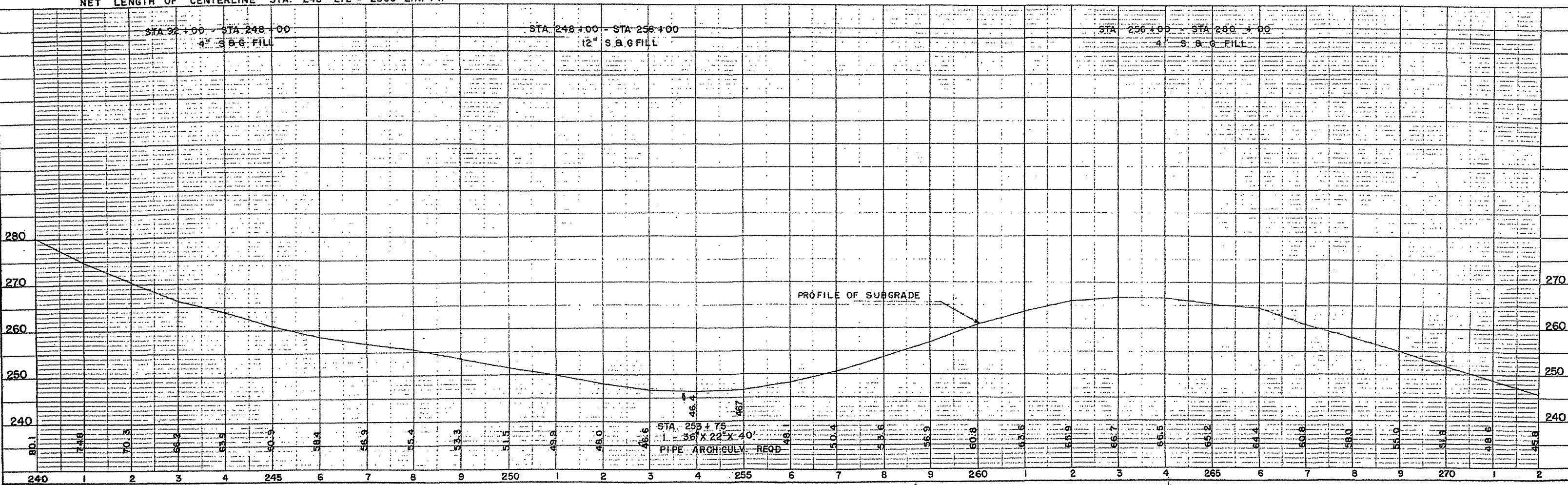
NET LENGTH OF CENTERLINE STA. 212 - 243 = 3000 LIN. FT.

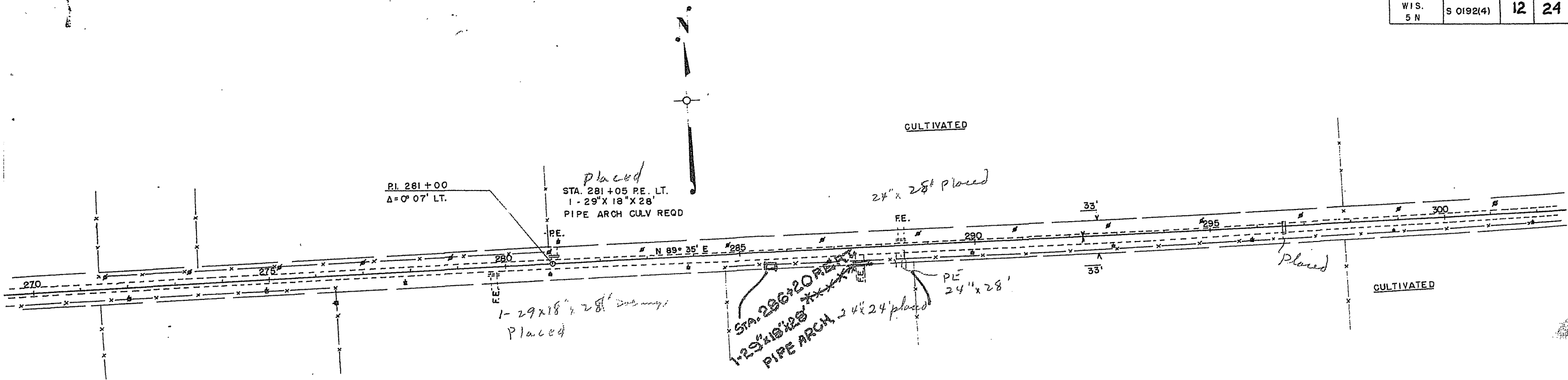




NOTE: REMOVE ALL PRESENT CULVERTS

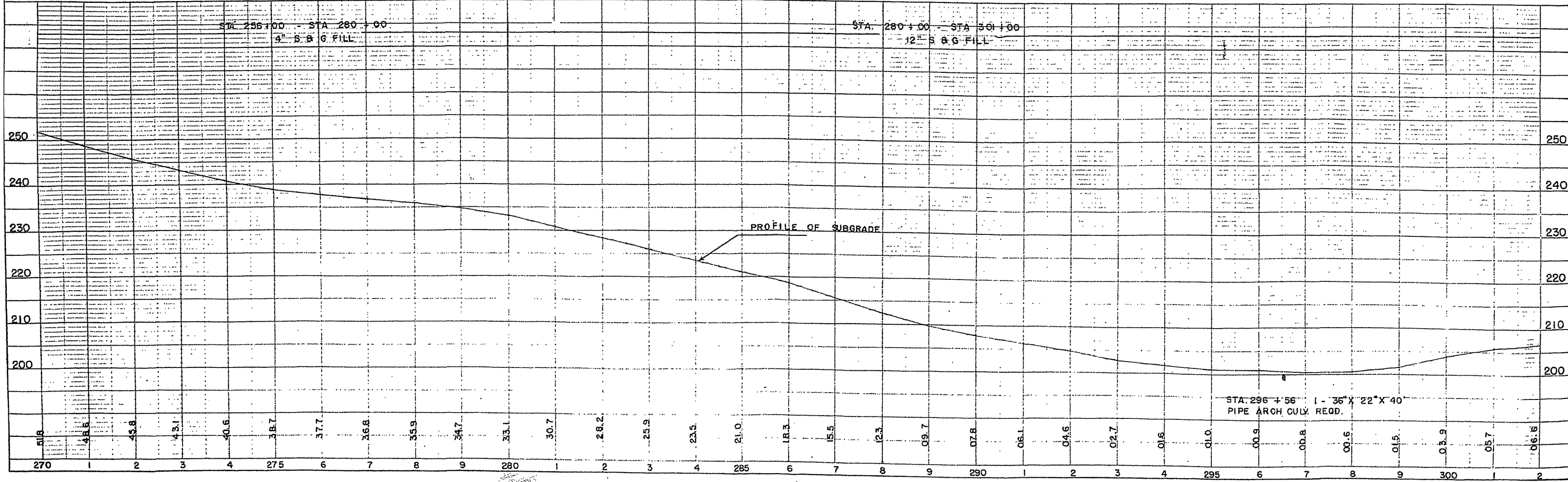
NET LENGTH OF CENTERLINE STA. 243-272 = 2900 LIN. FT.

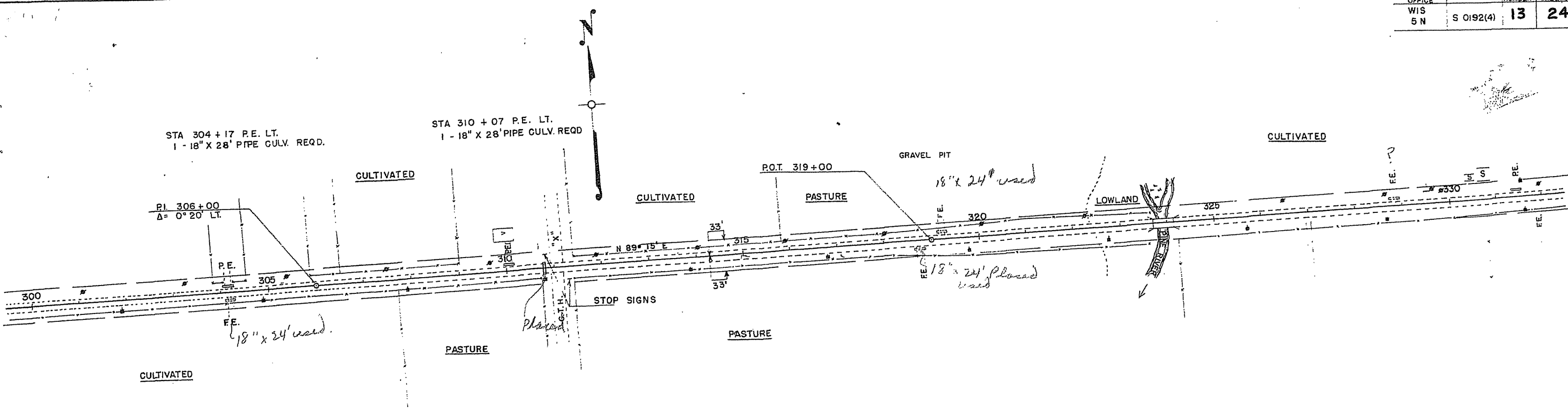




NOTE: REMOVE ALL PRESENT CULVERTS

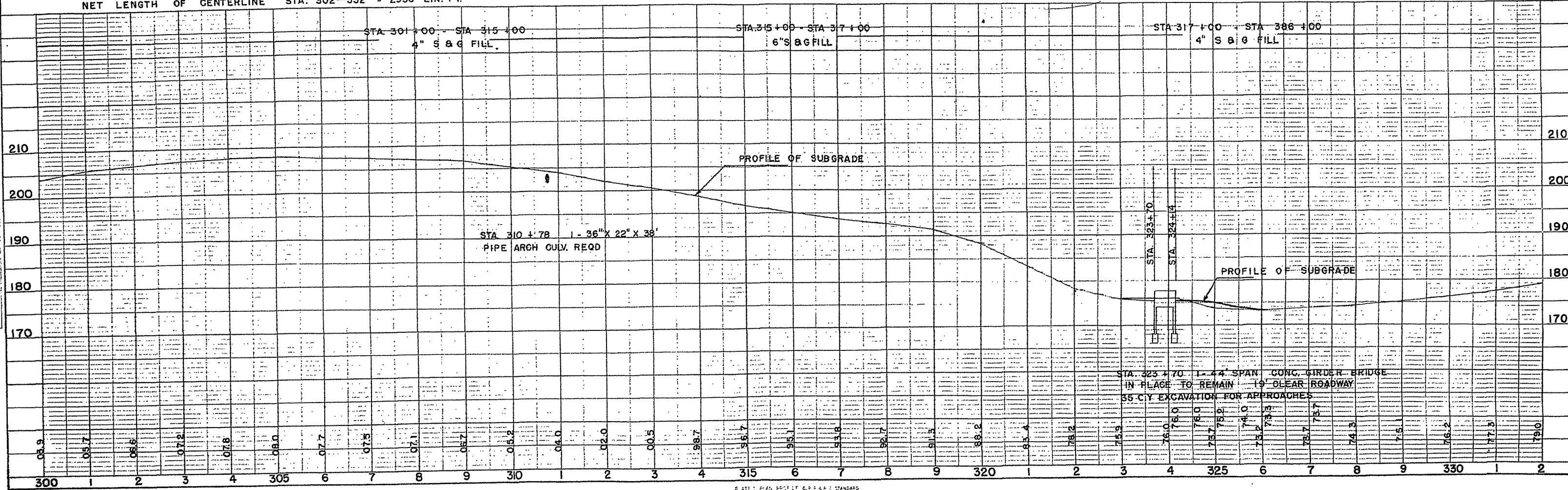
NET LENGTH OF CENTERLINE STA. 272-302 = 3000 LIN. FT.

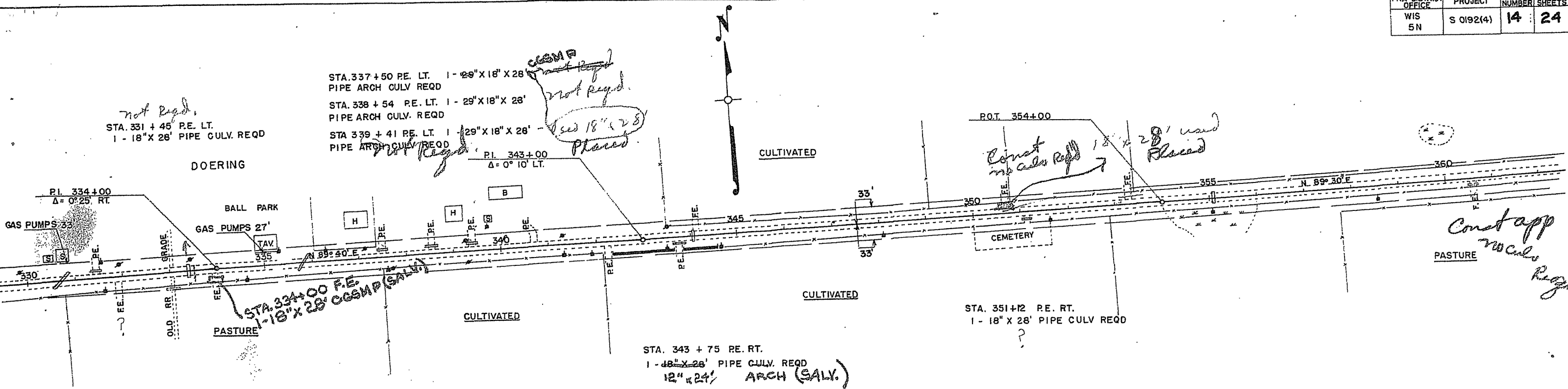




NOTE: REMOVE ALL PRESENT CULVERTS

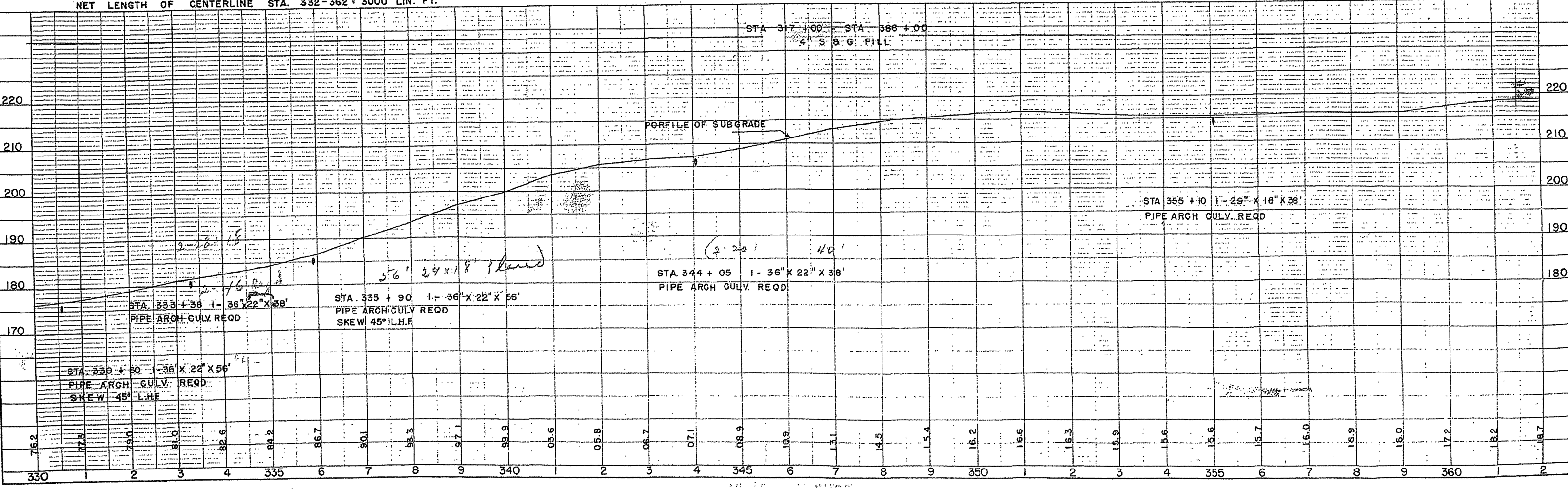
NET LENGTH OF CENTERLINE STA. 302-332 = 2956 LIN. FT.



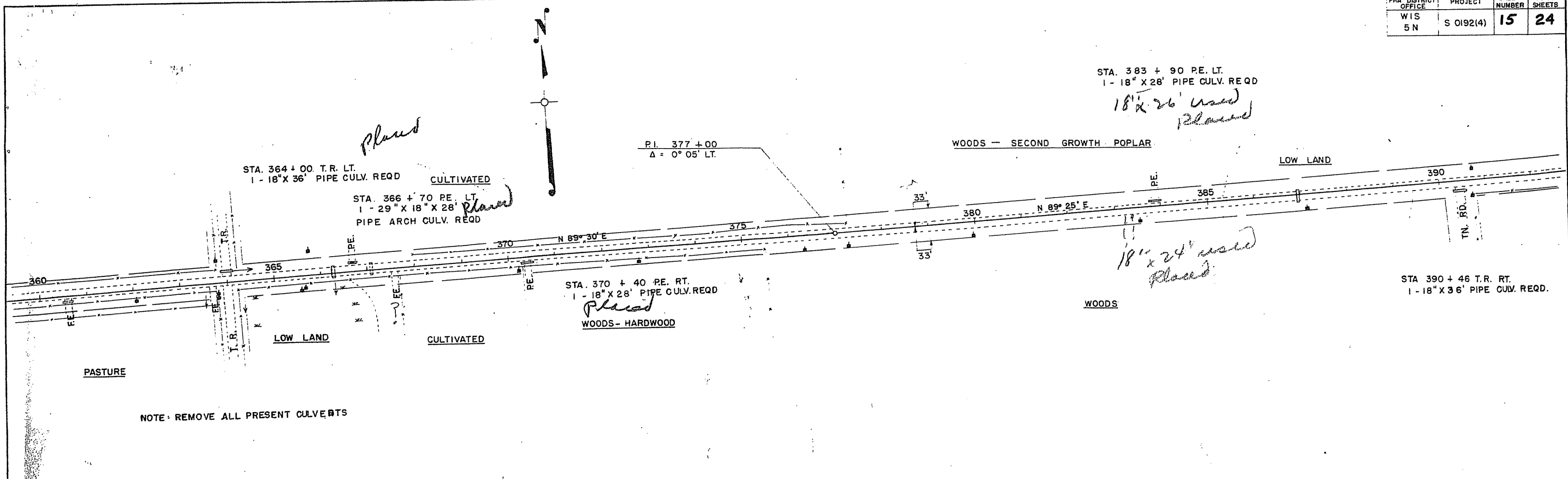


NOTE: REMOVE ALL PRESENT CULVERTS

NET LENGTH OF CENTERLINE STA. 332-362 = 3000 LIN. FT.

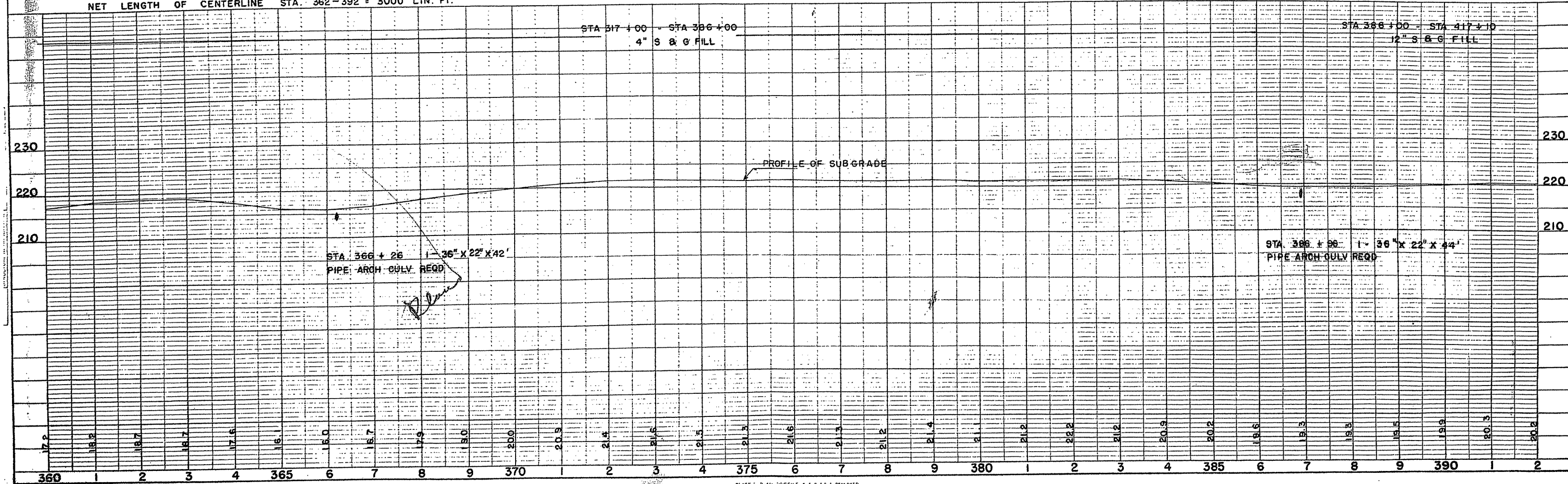


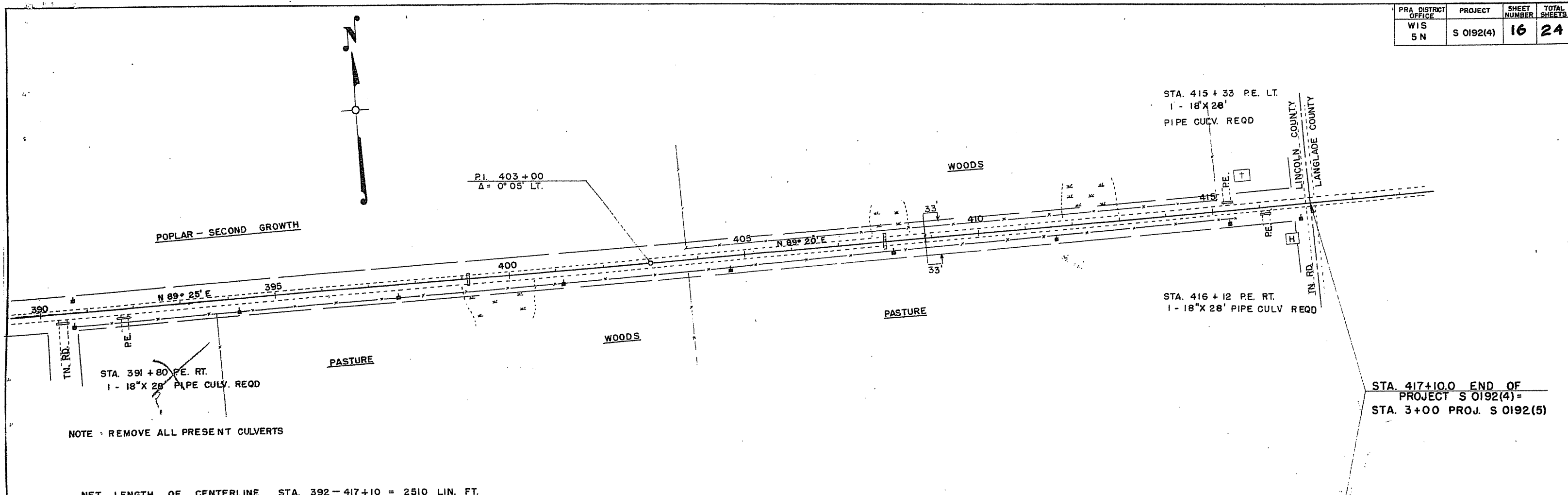
STRUCTURE NOTES



NOTE: REMOVE ALL PRESENT CULVERTS

NET LENGTH OF CENTERLINE STA. 362-392 = 3000 LIN. FT.

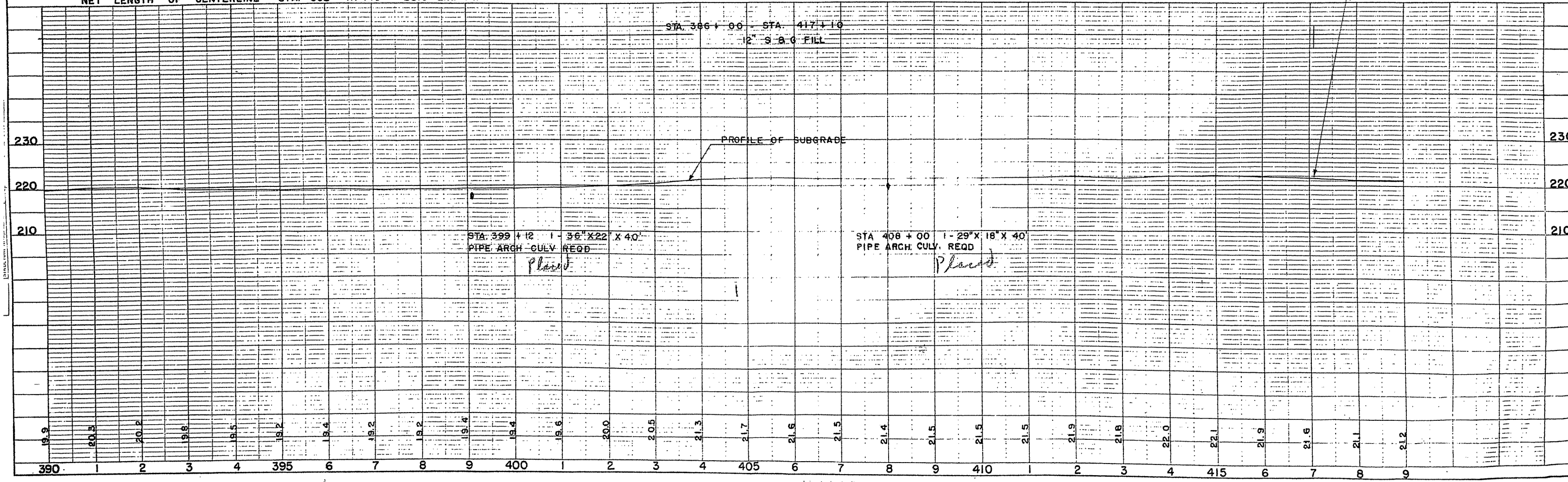




NOTE - REMOVE ALL PRESENT CULVERTS

STA. 417+10.0 END OF PROJECT S 0192(4) = STA. 3+00 PROJ. S 0192(5)

NET LENGTH OF CENTERLINE STA. 392 - 417+10 = 2510 LIN. FT.

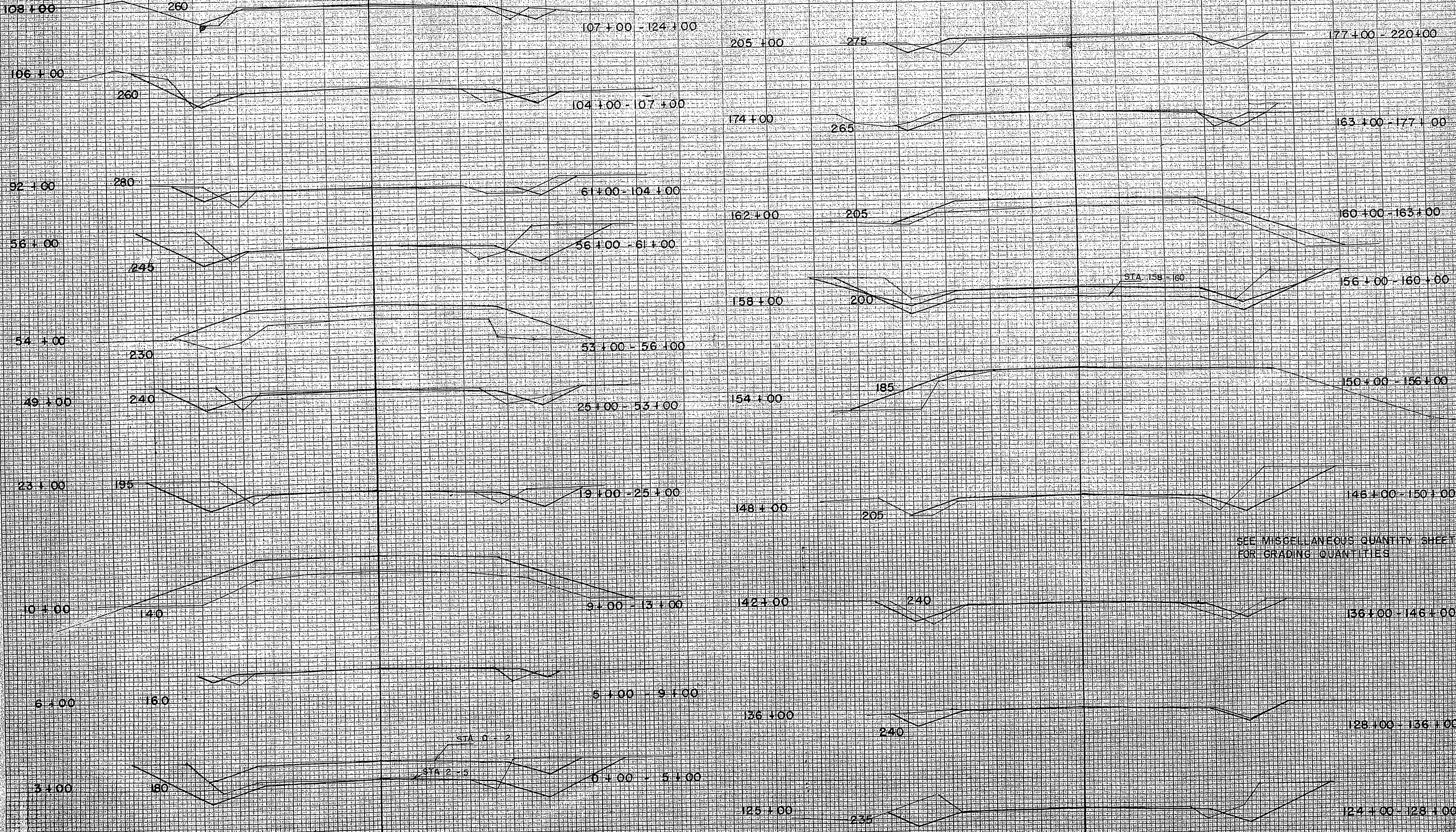




VERTICAL CURVE - SECTIONS

FED. ROAD DIST. NO.	STATE	PROJ. NO.	SHEET NO.	TOTAL SHEETS
4	WISC.	501924	22	24

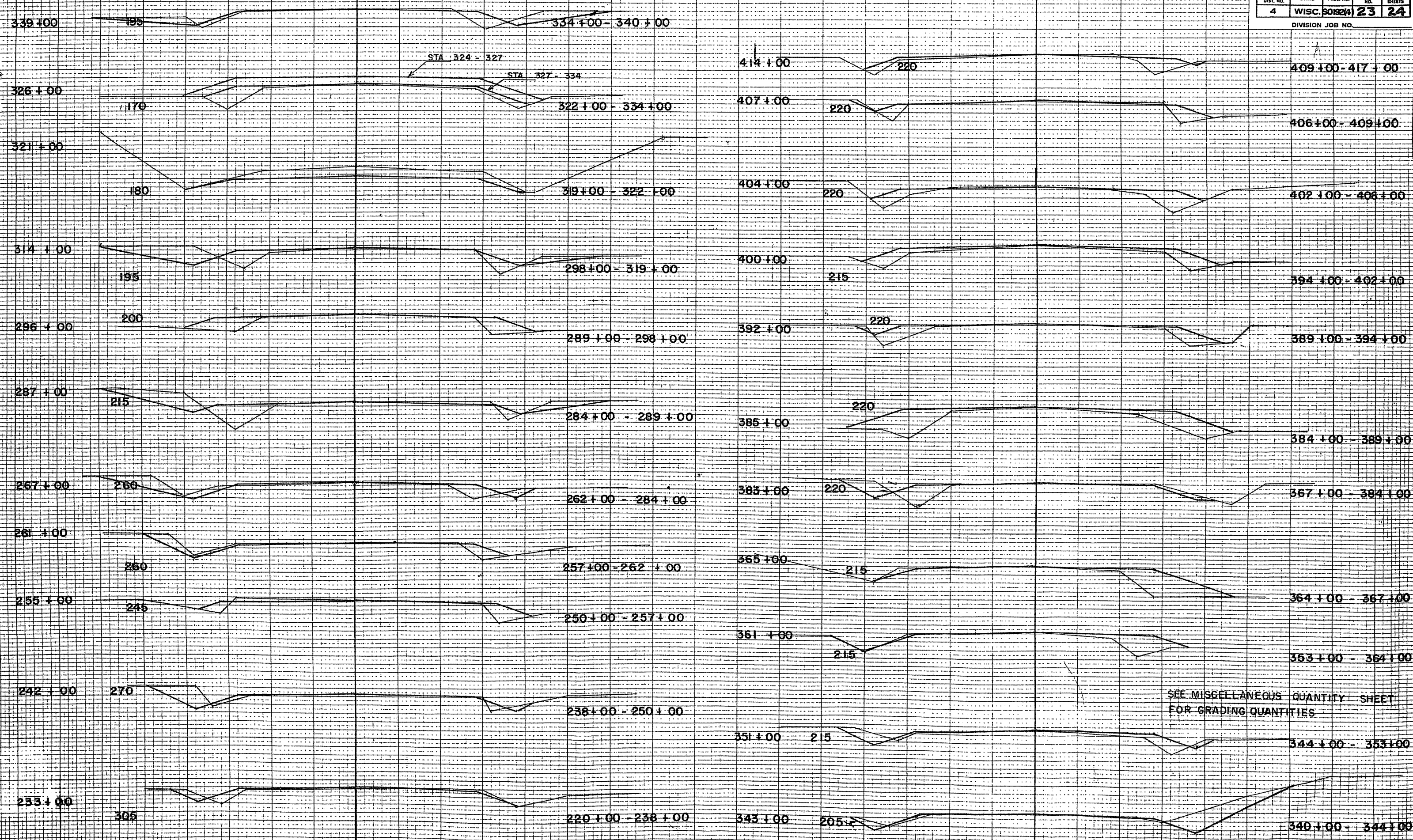
DIVISION JOB NO.



TYPICAL CROSS - SECTIONS

FED. ROAD DIST. NO.	STATE	PROJ. NO.	SHEET NO.	TOTAL SHEETS
4	WISC.	50124	23	24

DIVISION JOB NO.



SEE MISCELLANEOUS QUANTITY SHEET FOR GRADING QUANTITIES

SURVEY PLOTTED  
NOTE BOOK NO. 5292  
AREA CHECKED

SURVEY PLOTTED  
NOTE BOOK NO. 5292  
AREA CHECKED

19+00  
185

18+00  
180

17+00  
175

16+00  
165

15+00  
160

14+00  
150

13+00  
145

SEE MISCELLANEOUS QUANTITY SHEET  
FOR GRADING QUANTITIES