

INDEX OF SHEETS

- Sheet No. 1 Title
- Sheet No. 2-2.4 Typical Sections and Details
- Sheet No. 3-3.3 Estimate of Quantities
- Sheet No. 3A-3F Miscellaneous Quantities
- Sheet No. Right of Way Plat
- Sheet No. 5-5.20 Plan and Profile
- Sheet No. 6-6.21 Standard Detail Drawings
- Sheet No. Sign Plates
- Sheet No. Structure Plans
- Sheet No. Computer Earthwork Data
- Sheet No. 9-9.79 Cross Sections

TOTAL SHEETS = 139



LINCOLN

STATE OF WISCONSIN DEPARTMENT OF TRANSPORTATION

PLAN OF PROPOSED IMPROVEMENT MERRILL - RHINELANDER

BIG HAY MEADOW CREEK - C.T.H. 'CCC'

S.T.H. 17

LINCOLN COUNTY

STATE PROJECT NUMBER
9031-04-70

STATE PROJECT	FEDERAL PROJECT	
	PROJECT	CONTRACT
9031-04-70	MAF 086(13)	1

DESIGN DESIGNATION

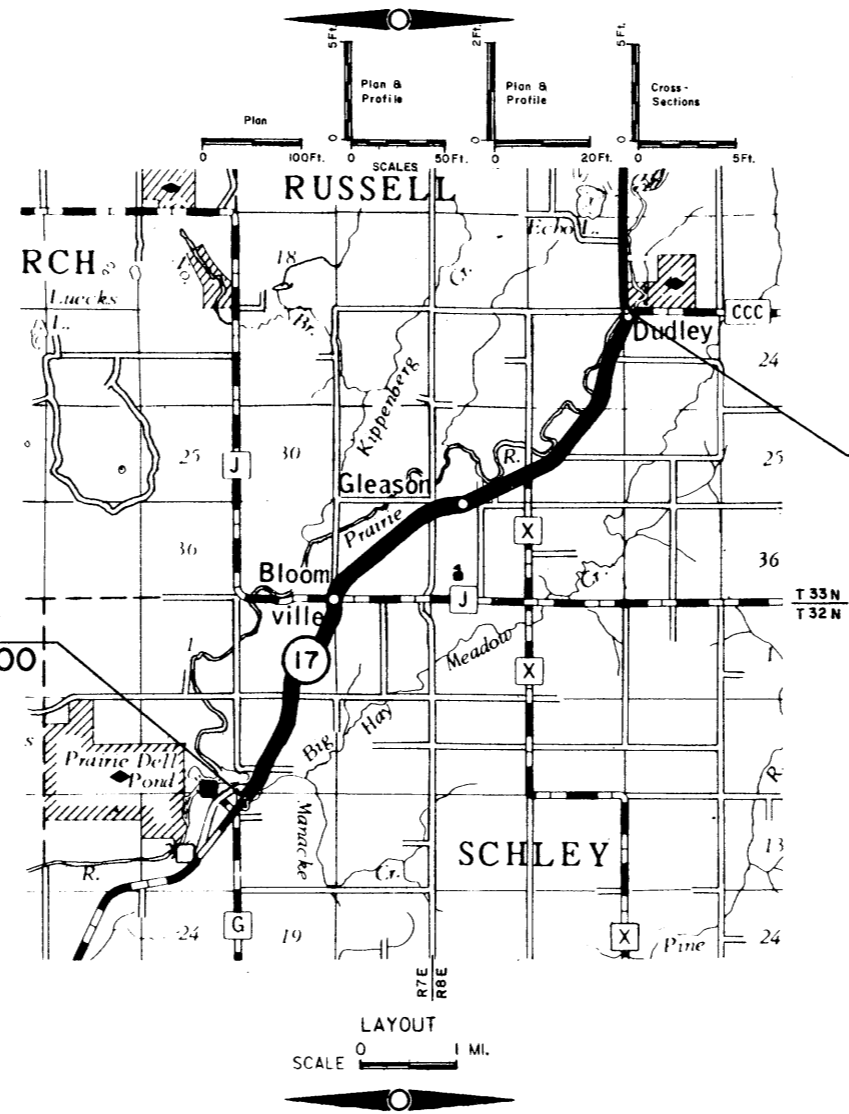
- A.D.T. 1989 = 2,800
- A.D.T. 2009 = 3,950
- D.H.V. = 711
- D. = 60-40
- T. = 12%
- V. = 60 mph

CONVENTIONAL SIGNS

- | | |
|--|---|
| <ul style="list-style-type: none"> COUNTY LINE CORPORATE LIMITS PROPERTY LINE LOT LINE LIMITED HIGHWAY EASEMENT EXISTING RIGHT OF WAY NEW RIGHT OF WAY REFERENCE LINE SLOPE INTERCEPT ORIGINAL GROUND MARSH OR ROCK PROFILE CULVERT IN PLACE CULVERT REQUIRED CULVERT REQUIRED (Profile) | <ul style="list-style-type: none"> COMBUSTIBLE FLUIDS (UNDER PRESSURE) UNDERGROUND UTILITIES GAS ELECTRIC TELEPHONE SERVICE PEDESTAL CABLE MARKER POWER POLE TELEPHONE POLE RAILROADS MARSH WOODED AREA |
|--|---|

**BEGIN PROJECT
STA. 460+00.00**
* N 522,000.00
* E 2,116,700.00

**END PROJECT
STA. 811+63.11**

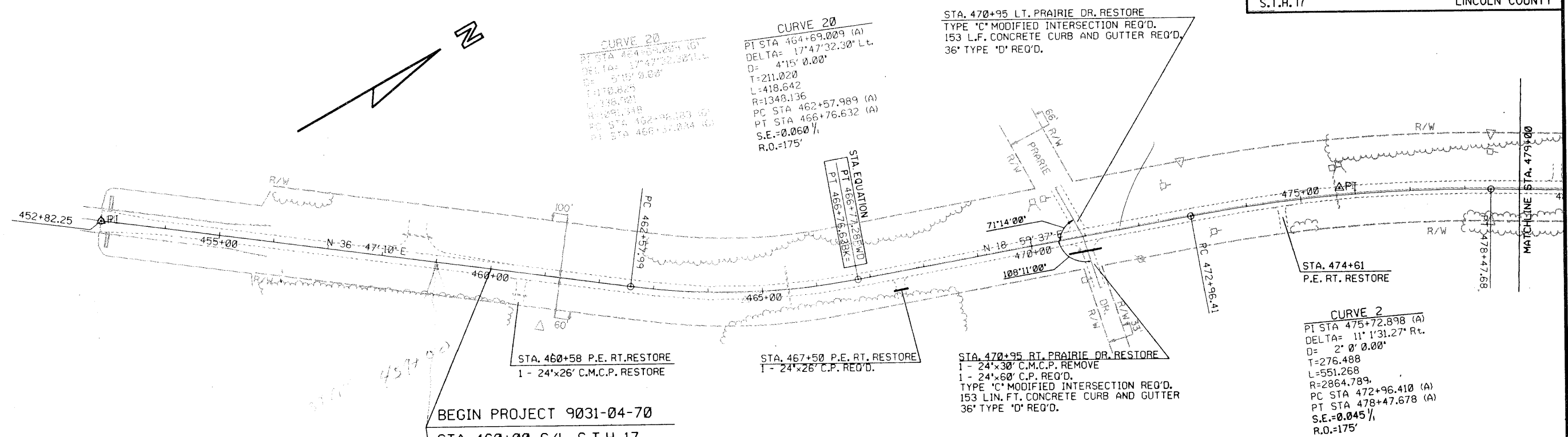


TOTAL NET LENGTH OF CENTERLINE = 6.660 MI.

* COORDINATES SCALED FROM U.S.G.S. TOPOGRAPHIC MAP, GLEASON, WISCONSIN QUADRANGLE FOR IDENTIFICATION ONLY.

STATE OF WISCONSIN DEPARTMENT OF TRANSPORTATION	
Surveyor <u>J.R.W. & R.B.J.</u>	District Checker <u>D.L.J.</u>
Designer <u>W.E.S.</u>	C.O. Plan Examiner <u>NRA</u>
District Supervisor <u>K.H.R.</u>	C.O. Coordinator <u>L.A.S.</u>
APPROVED:	
DATE: <u>9-9-88</u>	
DISTRICT DIRECTOR	
APPROVED:	
DATE: <u>9-23-88</u>	
STATE DESIGN ENGINEER FOR HWYS.	
U.S. DEPARTMENT OF TRANSPORTATION FEDERAL HIGHWAY ADMINISTRATION REGION 5 WISCONSIN DIVISION	
APPROVED:	
DATE: _____	
DIVISION ADMINISTRATOR	

NET. 9031-4-70

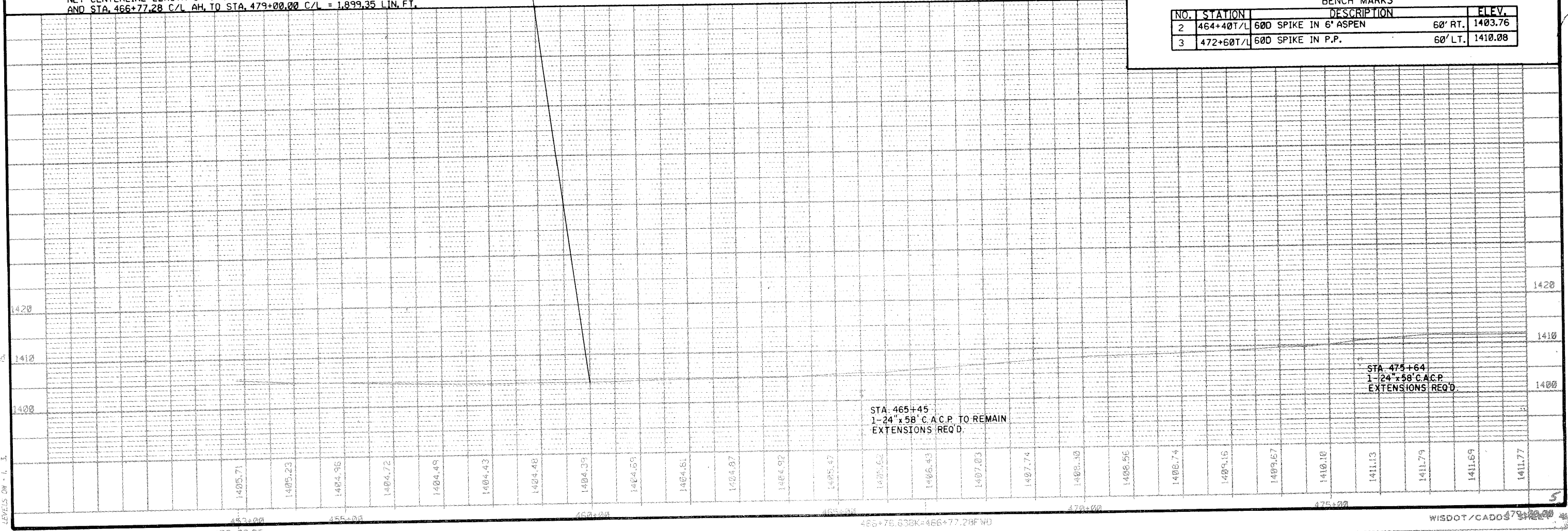


NET CENTERLINE LENGTH STA. 460+00.00 C/L TO STA. 466+76.63 C/L BK.
AND STA. 466+77.28 C/L AH, TO STA. 479+00.00 C/L = 1,899.35 LIN. FT.

BEGIN PROJECT 9031-04-70
STA. 460+00 C/L S.T.H. 17

BENCH MARKS

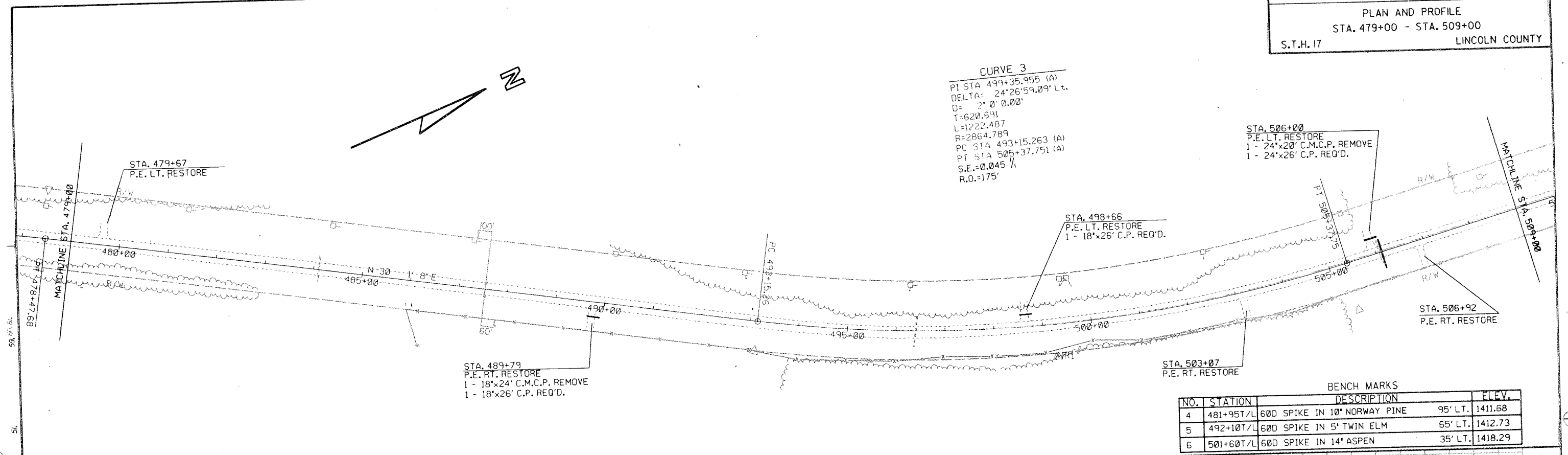
NO.	STATION	DESCRIPTION	ELEV.
2	464+40T/L	600 SPIKE IN 6" ASPEN	60' RT. 1403.76
3	472+60T/L	600 SPIKE IN P.P.	60' LT. 1410.08



STA. 465+45
1-24'x58' C.A.C.P. TO REMAIN
EXTENSIONS REQ'D.

STA. 475+64
1-24'x58' C.A.C.P.
EXTENSIONS REQ'D.

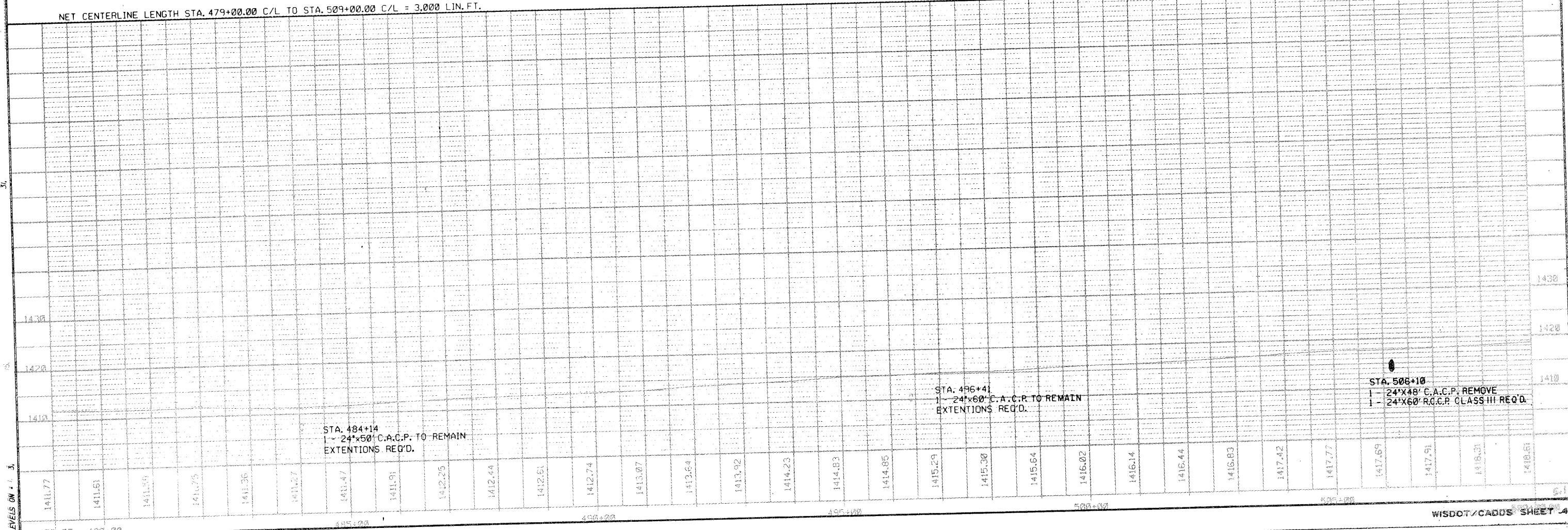
CURVE 3
 PI STA 499+35.955 (A)
 DELTA: 24°26'59.09" Lt.
 D= 2° 0' 0.00"
 T=620.691
 L=1222.487
 R=2864.789
 PC STA 493+15.263 (A)
 PT STA 505+37.751 (A)
 S.E.=0.045 %
 R.O.=175'



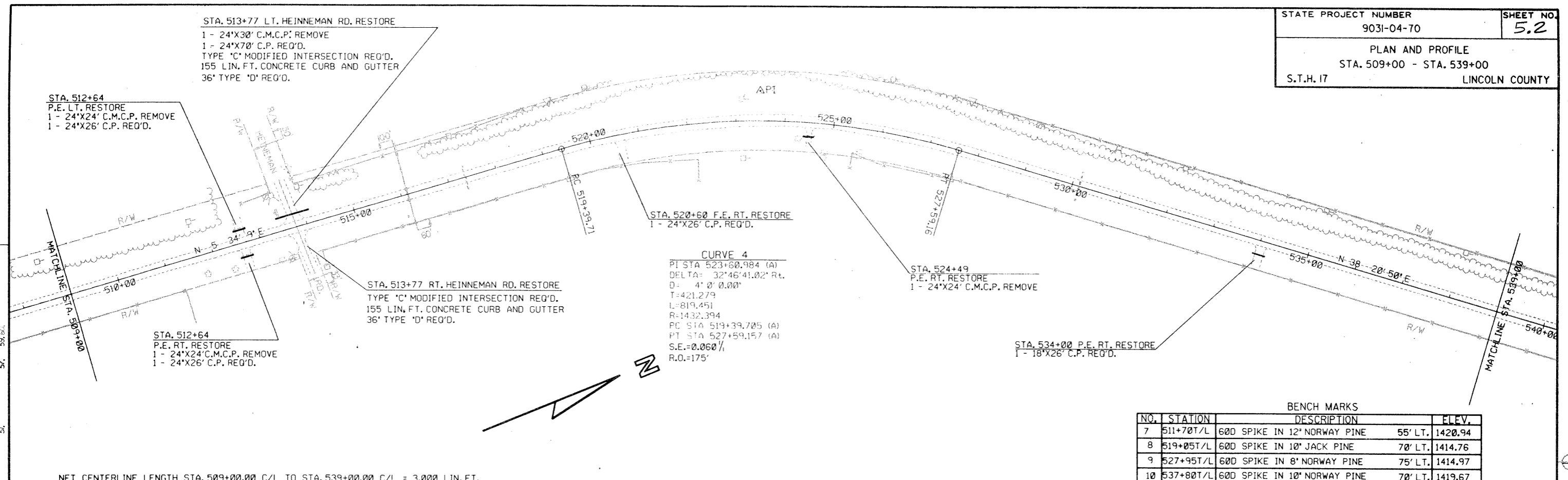
BENCH MARKS

NO.	STATION	DESCRIPTION	ELEV.
4	481+95T/L	600 SPIKE IN 10' NORWAY PINE	95' LT. 1411.68
5	492+10T/L	600 SPIKE IN 5' TWIN ELM	65' LT. 1412.73
6	501+60T/L	600 SPIKE IN 14' ASPEN	35' LT. 1418.29

NET CENTERLINE LENGTH STA. 479+00.00 C/L TO STA. 509+00.00 C/L = 3,000 LIN. FT.



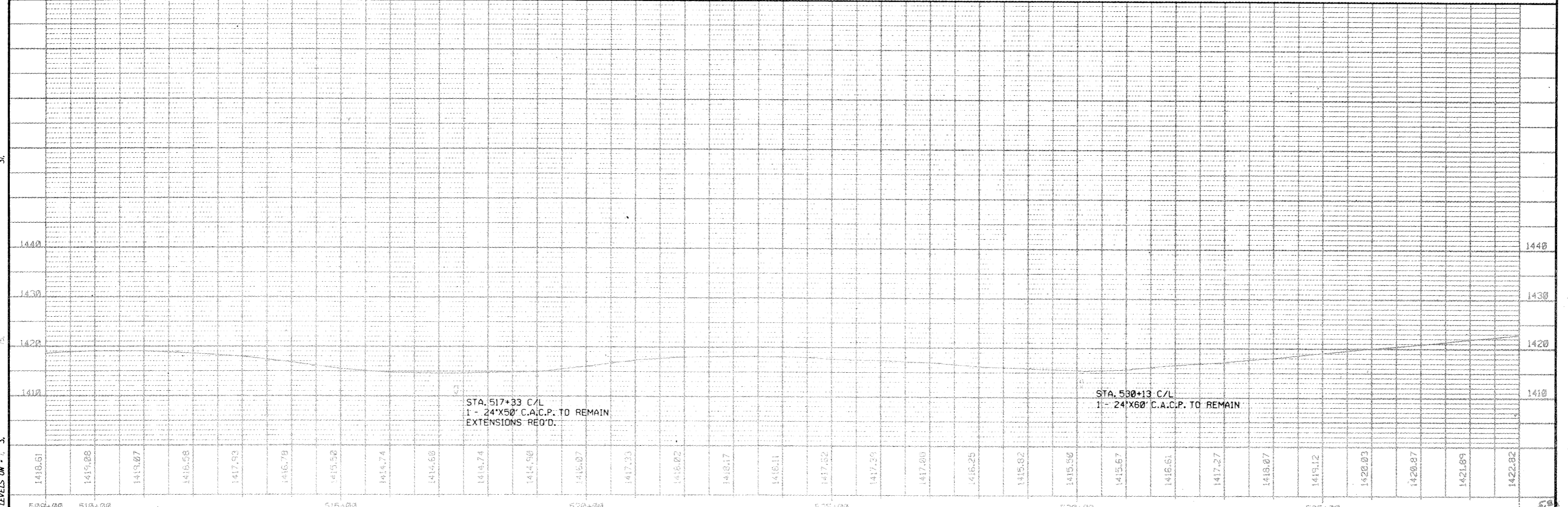
LEVELS ON P.L. 3.

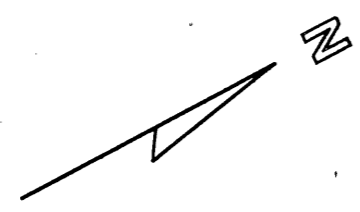


NET CENTERLINE LENGTH STA. 509+00.00 C/L TO STA. 539+00.00 C/L = 3,000 LIN. FT.

BENCH MARKS

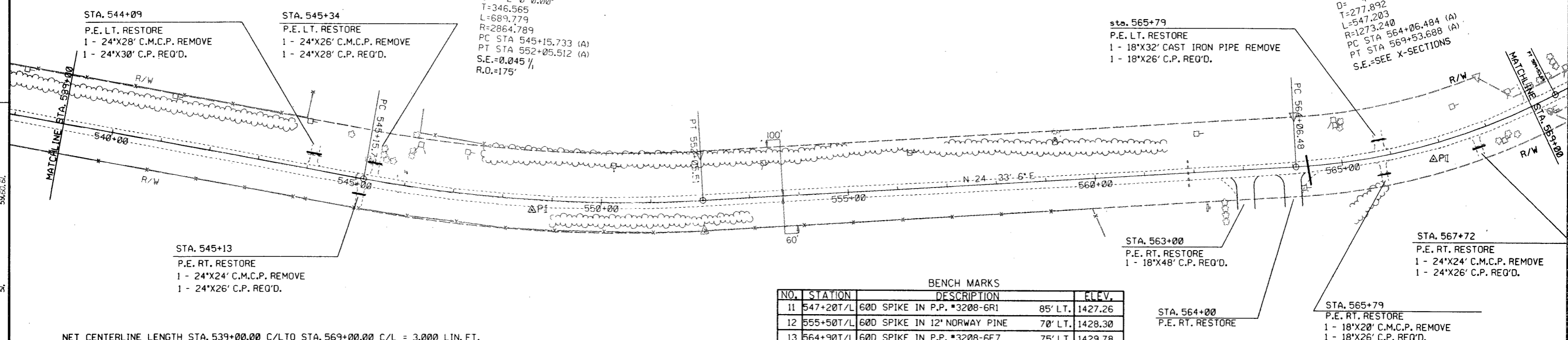
NO.	STATION	DESCRIPTION	ELEV.
7	511+70T/L	600 SPIKE IN 12" NORWAY PINE	55' LT., 1420.94
8	519+05T/L	600 SPIKE IN 10" JACK PINE	70' LT., 1414.76
9	527+95T/L	600 SPIKE IN 8" NORWAY PINE	75' LT., 1414.97
10	537+80T/L	600 SPIKE IN 10" NORWAY PINE	70' LT., 1419.67





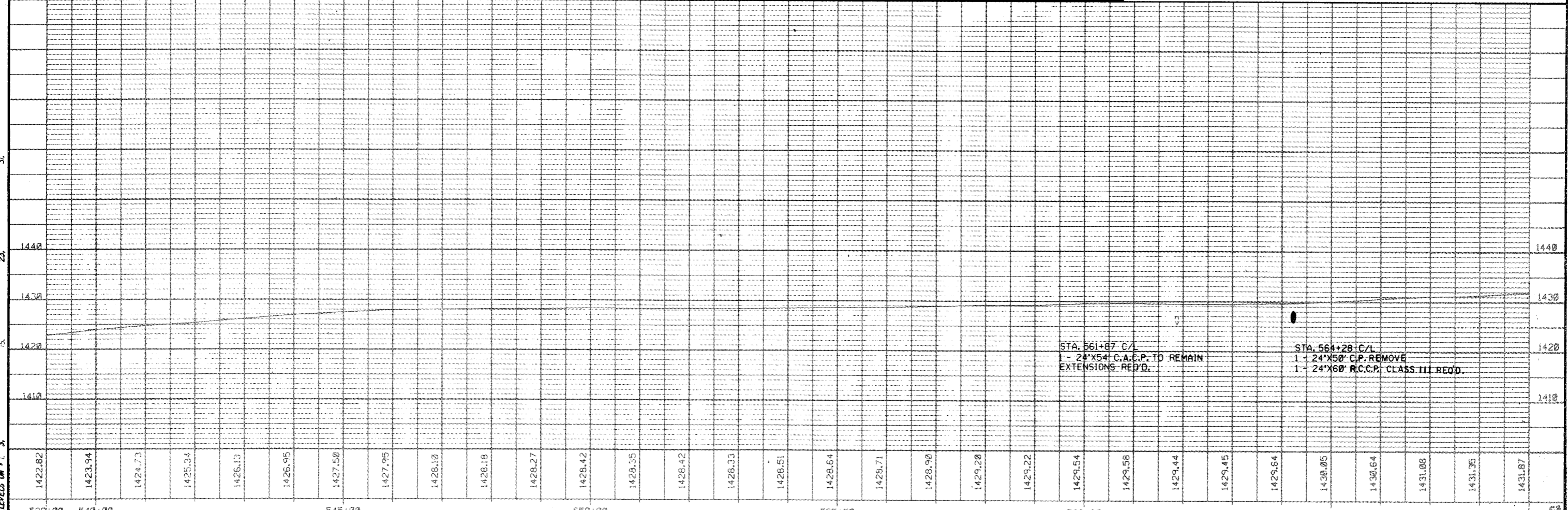
CURVE 5
 PI STA 548+62.298 (A)
 DELTA= 13°47'44.06" L.t.
 D= 2° 0' 0.00"
 T=346.565
 L=689.779
 R=2864.789
 PC STA 545+15.733 (A)
 PT STA 552+05.512 (A)
 S.E.=0.045 1/4
 R.O.=175'

CURVE 6
 PI STA 566+84.377 (A)
 DELTA= 24°37'26.92" L.t.
 D= 4°29'59.99"
 T=277.892
 L=547.203
 R=1273.240
 PC STA 564+06.484 (A)
 PT STA 569+53.688 (A)
 S.E.=SEE X-SECTIONS



BENCH MARKS			
NO.	STATION	DESCRIPTION	ELEV.
11	547+20T/L	60D SPIKE IN P.P. #3208-6R1	85' LT., 1427.26
12	555+50T/L	60D SPIKE IN 12" NORWAY PINE	70' LT., 1428.30
13	564+90T/L	60D SPIKE IN P.P. #3208-6E7	75' LT., 1429.78

NET CENTERLINE LENGTH STA. 539+00.00 C/L TO STA. 569+00.00 C/L = 3,000 LIN. FT.



STA. 570+70 - STA. 573+65 LT. & RT.
634 LIN. FT. CONCRETE CURB AND GUTTER
30-INCH TYPE 'D' REQ'D.

STA. 573+80 C/L S.T.H. 17 =
STA. 10+00 C.T.H. 'J'

STA. 576+46
P.E. LT. RESTORE
1' 18"x26" C.P. REQ'D.

STATE PROJECT NUMBER 903I-04-70	SHEET NO. 5.4
PLAN AND PROFILE STA. 569+00 - STA. 584+00 S.T.H. 17 LINCOLN COUNTY	

BEGIN CONSTRUCTION
STA. 15+70

STA. 569+00
P.E. LT. RESTORE

STA. 572+20
P.E. LT. RESTORE

STA. 573+00
P.E. LT. RESTORE

STA. 570+90
P.E. LT. RESTORE

sta. 574+50
P.E. RT. RESTORE

STA. 569+81
P.E. RT. RESTORE

STA. 571+60
P.E. RT. RESTORE

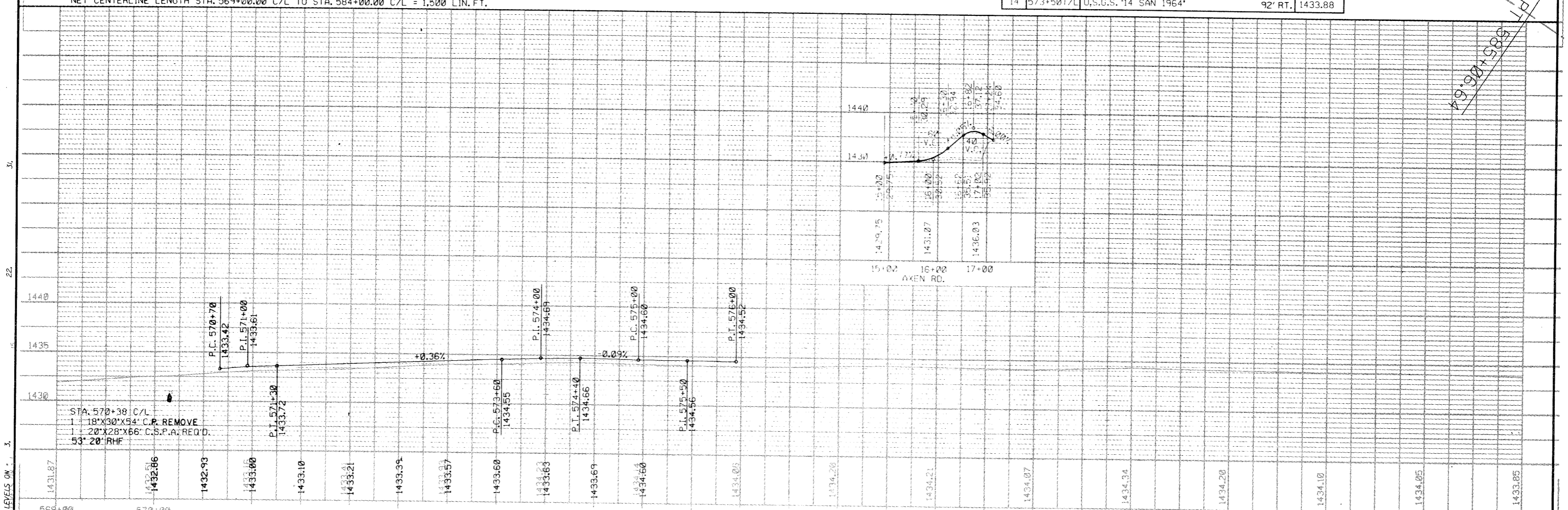
CURVE 7
PI STA 579+38.509 (A)
DELTA= 48°35'17.99" RT.
D= 4° 0' 0.00"
T=646.575
L=1214.708
R=1432.394
PC STA 572+31.934 (A)
PT STA 585+06.642 (A)
S.E.-SEE X-SECTIONS

STA. 573+90 - STA. 575+50 LT. & RT.
372 LIN. FT. CONCRETE CURB AND GUTTER
30-INCH TYPE 'D' REQ'D.

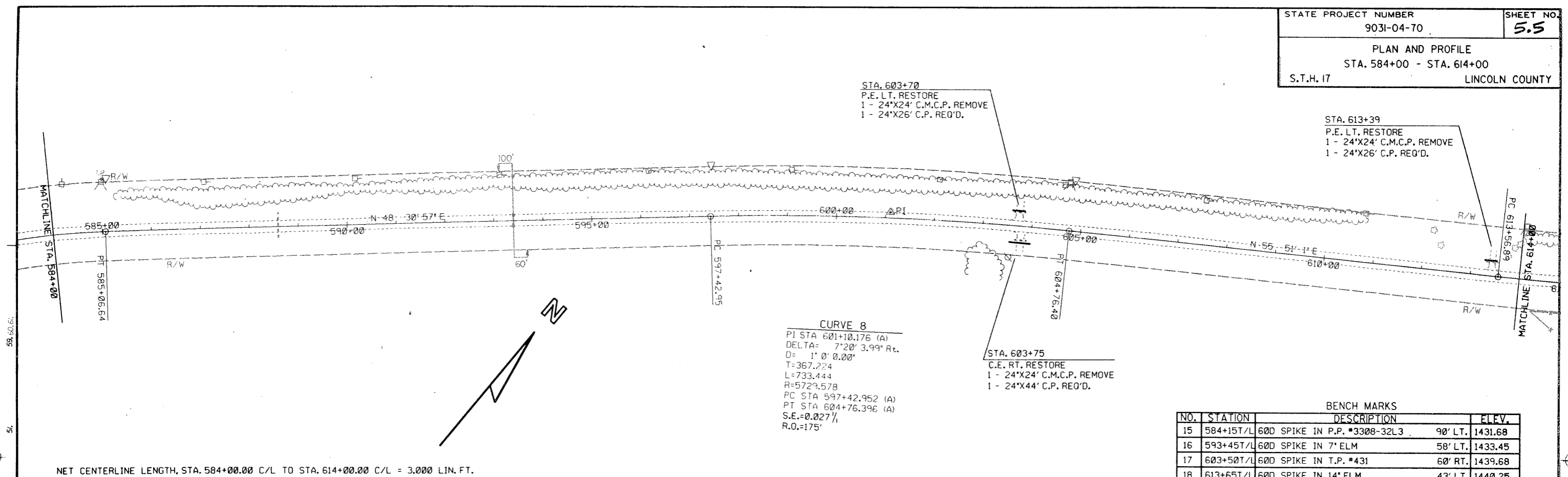
STA. 578+50 C/L S.T.H. 17 =
STA. 17+24 C/L AXEN RD.
TYPE 'C' MODIFIED INTERSECTION CONSTRUCT
155 LIN. FT. CONCRETE CURB AND GUTTER
36" TYPE 'D' REQ'D.

BENCH MARKS			
NO.	STATION	DESCRIPTION	ELEV.
14	573+501/L	U.S.G.S. '14 SAN 1964'	92' RT. 1433.88

NET CENTERLINE LENGTH STA. 569+00.00 C/L TO STA. 584+00.00 C/L = 1,500 LIN. FT.



STA. 570+30 C/L
1' 18"x30"x54" C.P. REMOVE
1' 20"x28"x66" C.S.P.A. REQ'D.
53' 20" RHF



CURVE 8
 PI STA 601+10.176 (A)
 DELTA= 7°20' 3.99" Rt.
 D= 1' 0" 0.00"
 T=367.224
 L=733.444
 R=5723.578
 PC STA 597+42.952 (A)
 PT STA 604+76.396 (A)
 S.E.=0.027%
 R.O.=175'

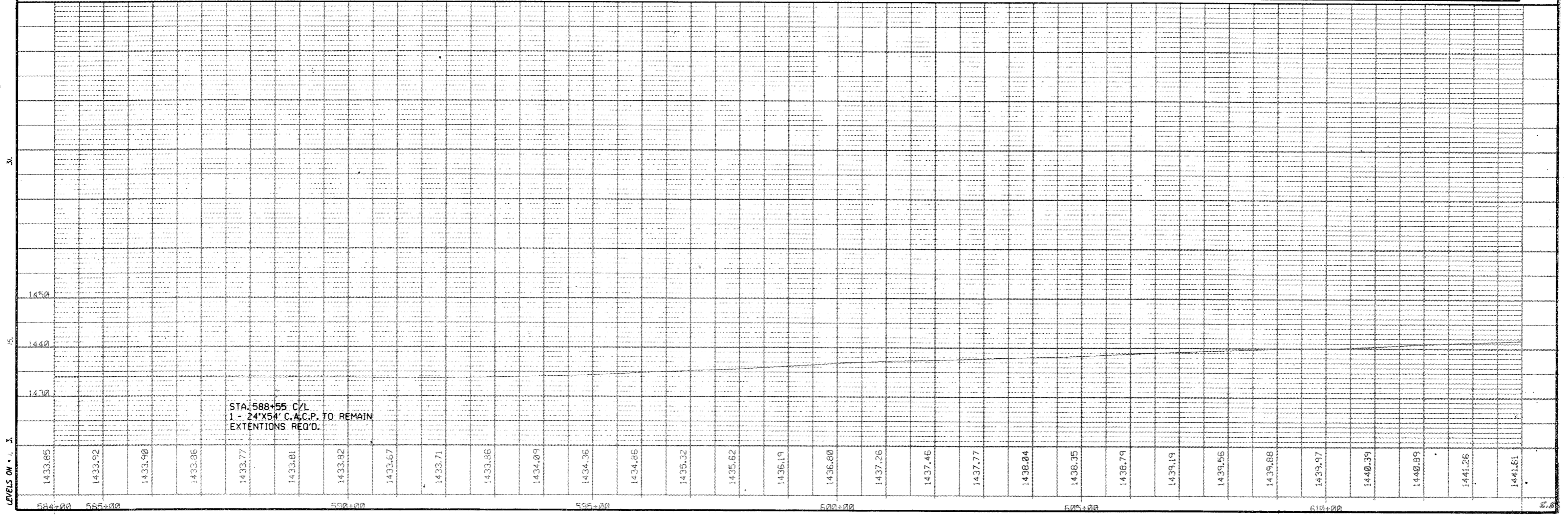
STA. 603+75
 C.E. RT. RESTORE
 1 - 24"x24' C.M.C.P. REMOVE
 1 - 24"x44' C.P. REQ'D.

STA. 613+39
 P.E. LT. RESTORE
 1 - 24"x24' C.M.C.P. REMOVE
 1 - 24"x26' C.P. REQ'D.

BENCH MARKS

NO.	STATION	DESCRIPTION	ELEV.
15	584+15T/L	600 SPIKE IN P.P. #3308-32L3	90' LT. 1431.68
16	593+45T/L	600 SPIKE IN 7' ELM	58' LT. 1433.45
17	603+50T/L	600 SPIKE IN T.P. #431	60' RT. 1439.68
18	613+65T/L	600 SPIKE IN 14' ELM	43' LT. 1440.25

NET CENTERLINE LENGTH, STA. 584+00.00 C/L TO STA. 614+00.00 C/L = 3,000 LIN. FT.

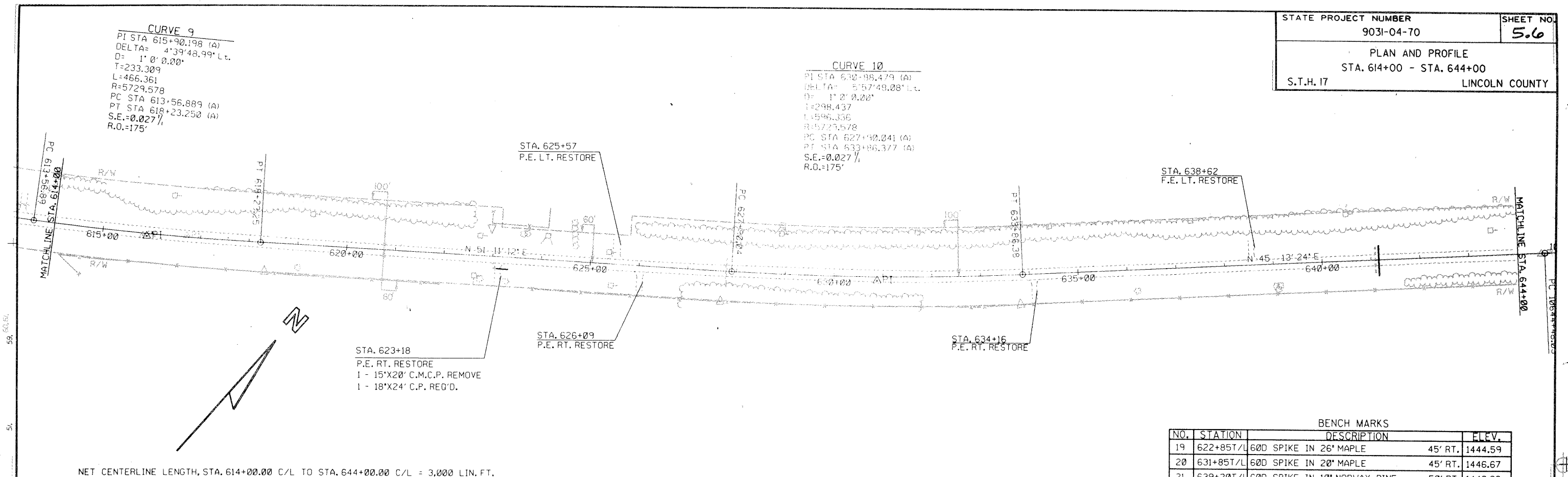


STA. 588+55 C/L
 1 - 24"x54' C.A.C.P. TO REMAIN
 EXTENSIONS REQ'D.

STATION	ELEVATION
584+00	1433.85
585+00	1433.92
586+00	1433.90
587+00	1433.86
588+00	1433.77
589+00	1433.81
590+00	1433.82
591+00	1433.67
592+00	1433.71
593+00	1433.86
594+00	1434.09
595+00	1434.36
596+00	1434.86
597+00	1435.32
598+00	1435.62
599+00	1436.19
600+00	1436.80
601+00	1437.26
602+00	1437.46
603+00	1437.77
604+00	1438.04
605+00	1438.35
606+00	1438.79
607+00	1439.19
608+00	1439.56
609+00	1439.88
610+00	1439.97
611+00	1440.39
612+00	1440.89
613+00	1441.26
614+00	1441.61

CURVE 9
 PI STA 615+90.198 (A)
 DELTA= 4°39'48.99" L.L.
 D= 1° 0' 0.00"
 T=233.309
 L=466.361
 R=5729.578
 PC STA 613+56.889 (A)
 PT STA 618+23.250 (A)
 S.E.=0.027%
 R.O.=175'

CURVE 10
 PI STA 630+98.479 (A)
 DELTA= 5°57'48.08" L.L.
 D= 1° 0' 0.00"
 T=298.437
 L=596.356
 R=5723.578
 PC STA 627+90.041 (A)
 PT STA 633+86.377 (A)
 S.E.=0.027%
 R.O.=175'



BENCH MARKS

NO.	STATION	DESCRIPTION	ELEV.
19	622+85T/L	600 SPIKE IN 26' MAPLE	45' RT. 1444.59
20	631+85T/L	600 SPIKE IN 20' MAPLE	45' RT. 1446.67
21	639+20T/L	600 SPIKE IN 10' NORWAY PINE	50' RT. 1446.38

