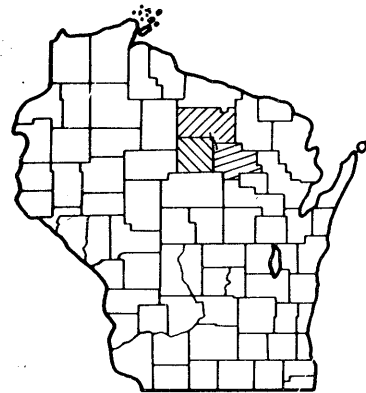


Index of Sheets

Sheet No. 1	Title
Sheet No. 2-2.2	Typical Sections and Details
Sheet No. 3-3.1	Estimate of Quantities
Sheet No. 3A	Miscellaneous Quantities
Sheet No. —	Right of Way Plat
Sheet No. 5-5.13	Plan and Profile STA 515+00 TO STA 921+00
Sheet No. 6-6.6	Standard Detail Drawings
Sheet No. —	Standard Sign Plates
Sheet No. —	Structure Plans
Sheet No. —	Computer Earthwork Data
Sheet No. 9-9.100	Cross Sections

TOTAL SHEETS = 129



Design Designation

A.D.T.	1982	=	2,100
A.D.T.	2002	=	2,900
D.H.V.		=	500
D.		=	60%
T.		=	10%
V.		=	60 M.P.H.

Conventional Signs

County Line	-----	Caution Symbol (Comoustible fluids under pressure)	
Township or Range Line	-----	Railroads	
Section Line	-----	Fence	
Corporate or City Limits	-----	Culverts in Place	
Property line	-----	Culverts Required	
Lot Line	-----	Power Pole	
Existing Right of Way Line	-----	Telephone or Telegraph Pole	
New Right of Way Line	-----	Right of Way Markers	
Base or Survey Line	-----	Marsh	
Slope Intercept	-----	Wooded Area	
Existing Roadway or Private Entrance	-----	Grade Elevation	

STATE OF WISCONSIN DEPARTMENT OF TRANSPORTATION

PLAN OF PROPOSED IMPROVEMENT

GLEASON - NORTH COUNTY LINE

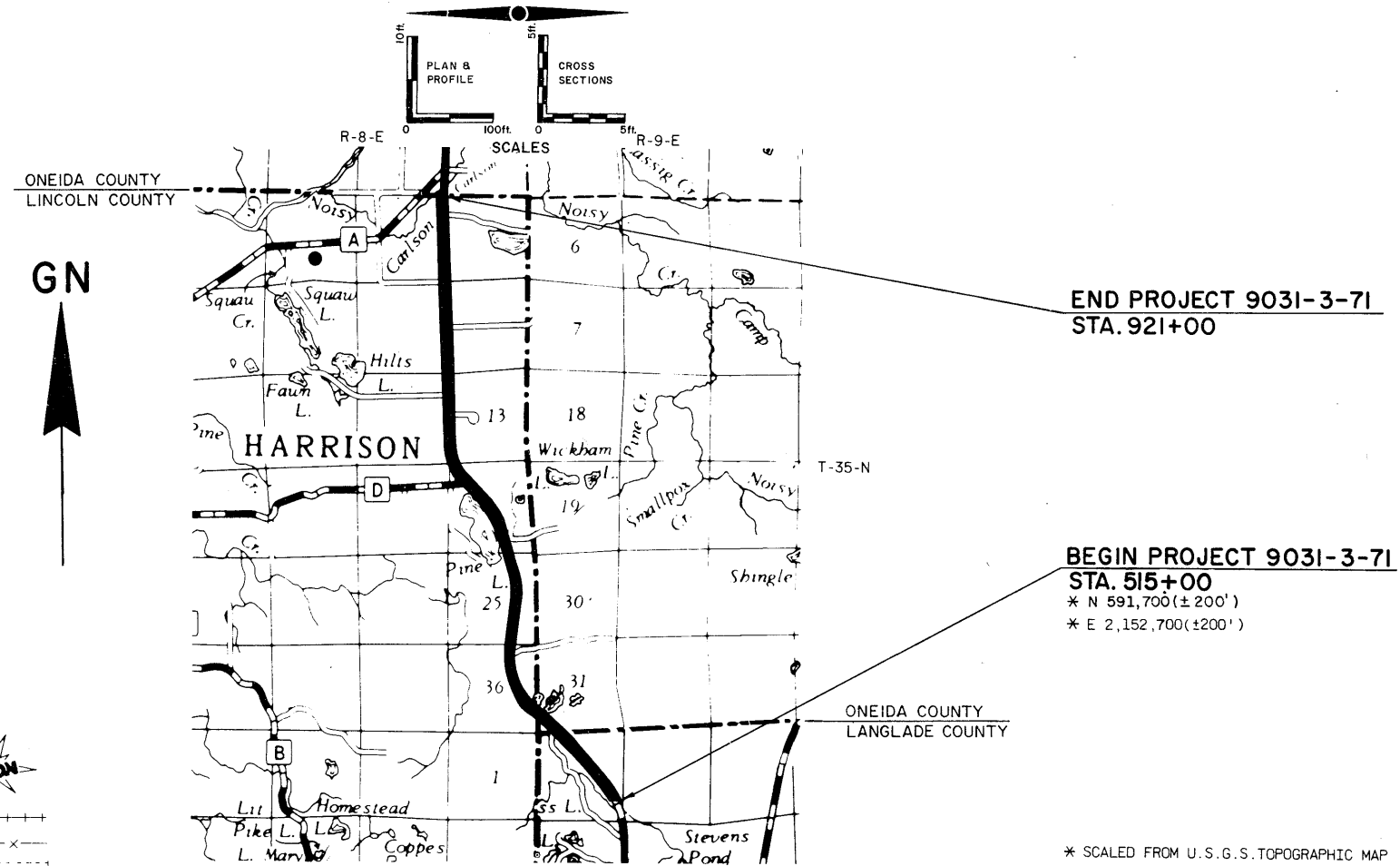
NORTH LANGLADE COUNTY LINE - NORTH LINCOLN COUNTY LINE

S.T.H. 17

LINCOLN, LANGLADE, & ONEIDA COUNTIES

STATE PROJECT	FEDERAL PROJECT	
	PROJECT	CONTRACT
9031 -3- 71	F-FR 086(8)	I

STATE PROJECT NUMBER
9031-3-71



END PROJECT 9031-3-71
STA. 921+00

BEGIN PROJECT 9031-3-71
STA. 515+00
* N 591,700 (± 200')
* E 2,152,700 (± 200')

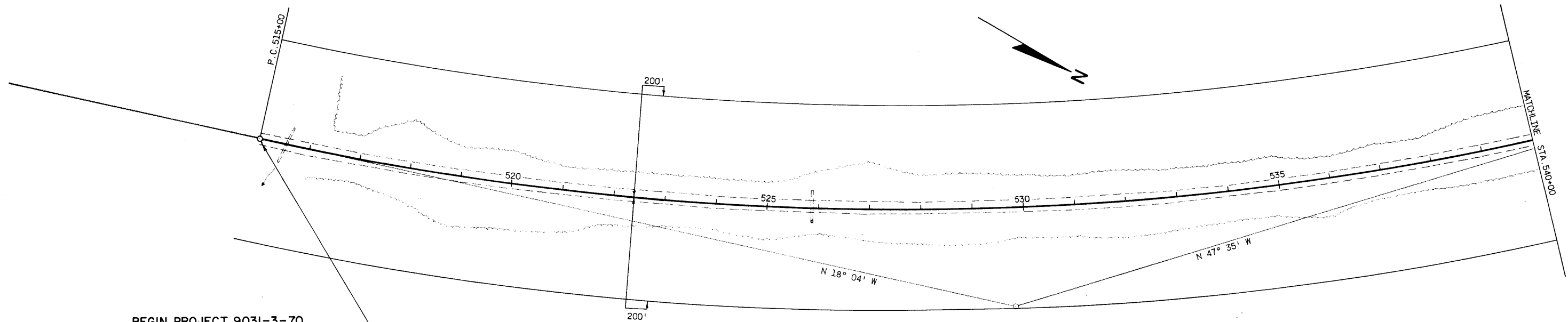
* SCALED FROM U.S.G.S. TOPOGRAPHIC MAP
PARRISH, WISCONSIN, QUADRANGLE FOR
IDENTIFICATION ONLY.

Layout
Scale 0 1 2 Mi.
Total Net Length of Centerline 7.689 Mi. Rural

STATE OF WISCONSIN DEPARTMENT OF TRANSPORTATION	
Supervisor <u>E.H.M.</u>	District Checker <u>E.S.A.</u>
Description <u>N.O.</u>	C.O. Checker <u>M.H.</u>
District Supervisor <u>R.G.B.</u>	C.O. Coordinator <u>J.P.C.</u>
Approved _____	
Date <u>3/30/81</u>	<u>R.D. Schindler</u> District Transportation Director
Approved _____	
Date <u>6/10/81</u>	<u>D.J. Strand</u> Chief Design Engineer
Approved _____	
U.S. DEPARTMENT OF TRANSPORTATION FEDERAL HIGHWAY ADMINISTRATION REGION 5 WISCONSIN DIVISION	
Approved _____	
Date _____	

P.I. 530+09.81
 Δ 29°31'30" LT.
 D. 1°00'
 T. 1509.81'
 L. 2952.50'
 SE. 0.027'/'
 RO. 175'

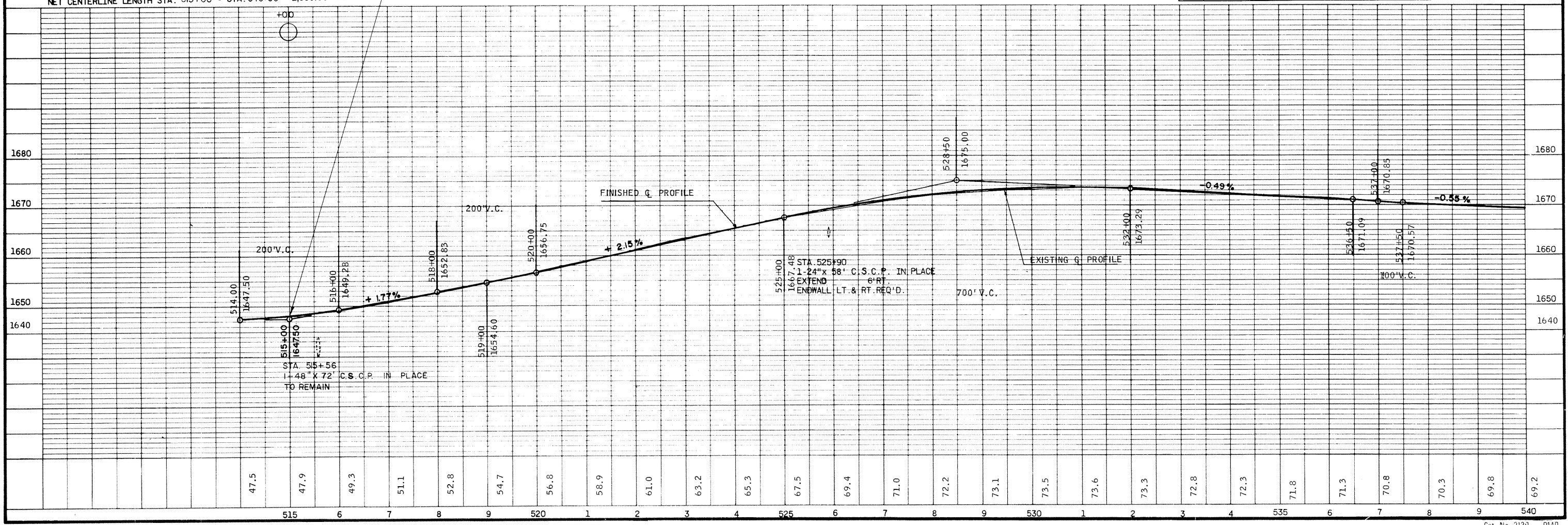
STATE PROJECT NUMBER	SHEET NO.
9031-3-71	5
PLAN & PROFILE	
STA. 515+00 - STA. 540+00	
S.T.H. 17	FOR
	LANGLADE COUNTY

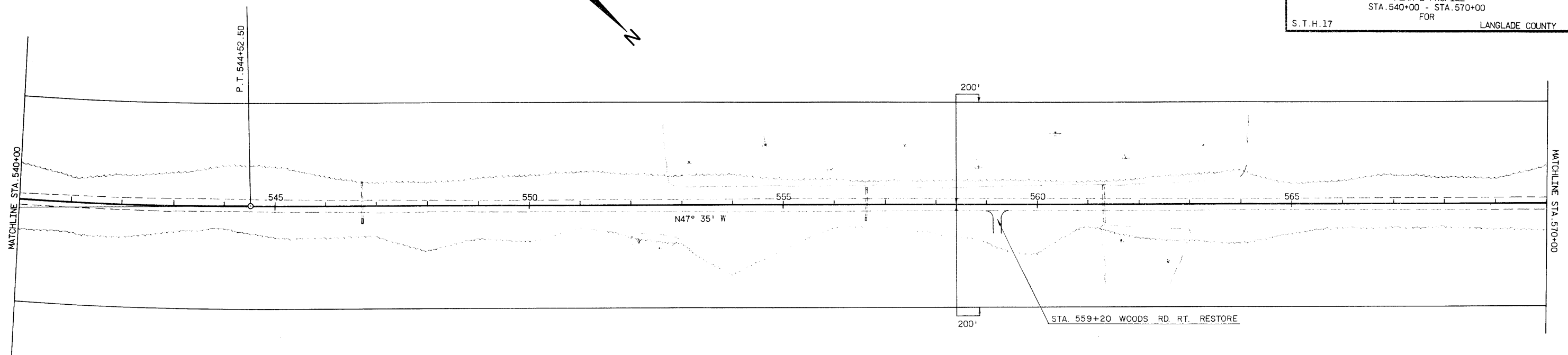


BEGIN PROJECT 9031-3-70
 STA. 515+00

NET CENTERLINE LENGTH STA. 515+00 - STA. 540+00 = 2,500.00 LIN. FT.

BENCH MARKS			
NO.	STATION	DESCRIPTION	ELEV.
10	518+50	BOLT IN 10" ASPEN	80' RT. 1646.81
11	531+25	BOLT IN 14" ASH	75' RT. 1675.15
12	541+00	BOLT IN 14" WHITE BIRCH	65' LT. 1668.00

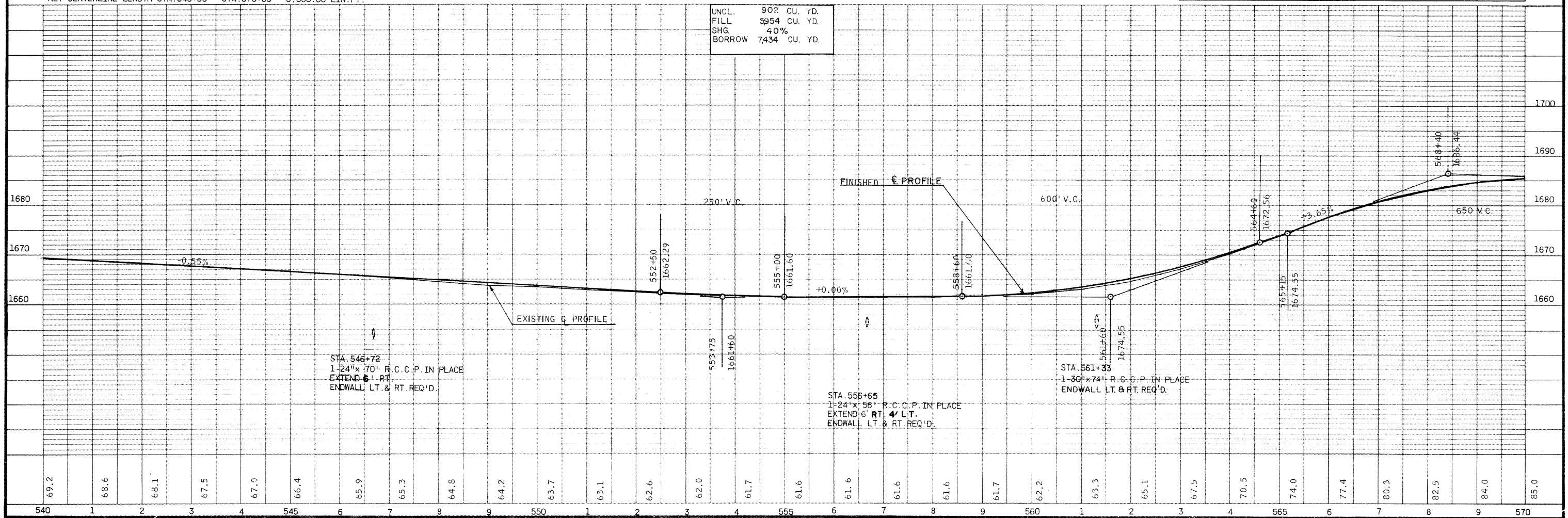




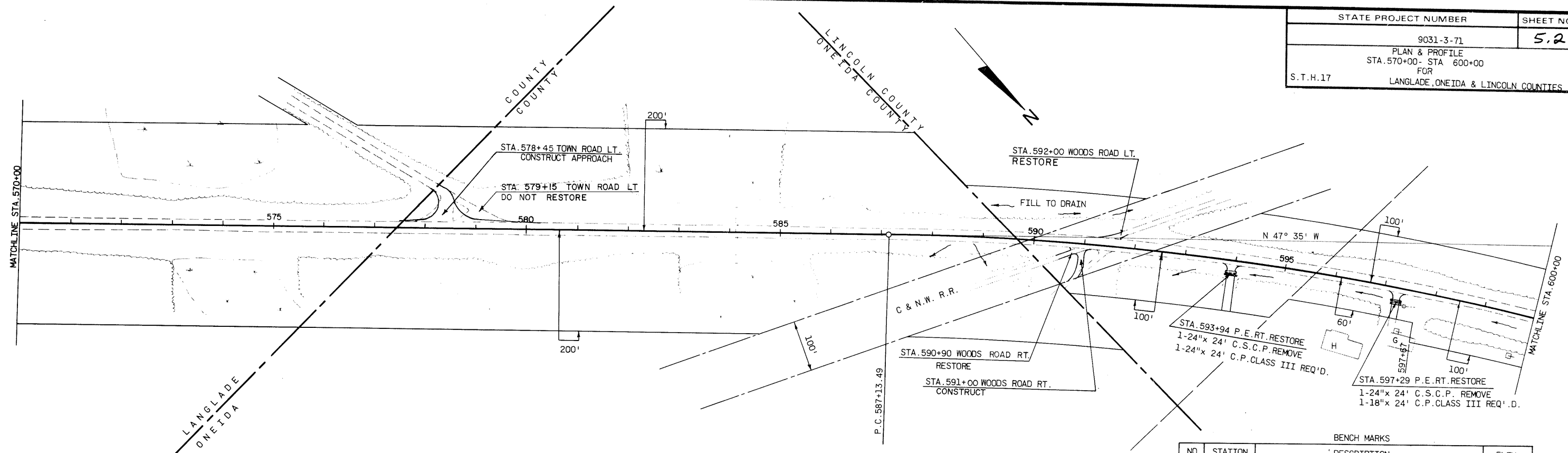
BENCH MARKS			
NO.	STATION	DESCRIPTION	ELEV.
13	551+80	BOLT IN 8" ASPEN 65' RT.	1659.91
14	565+15	BOLT IN 14" WHITE BIRCH 58' LT.	1674.27

NET CENTERLINE LENGTH STA. 540+00 - STA. 570+00 = 3,000.00 LIN. FT.

UNCL. 902 CU. YD.
FILL 5954 CU. YD.
SHG. 40%
BORROW 7434 CU. YD.



STATE PROJECT NUMBER	9031-3-71	SHEET NO	5.2
PLAN & PROFILE STA. 570+00 - STA. 600+00 FOR LANGLADE, ONEIDA & LINCOLN COUNTIES			
S.T.H. 17			

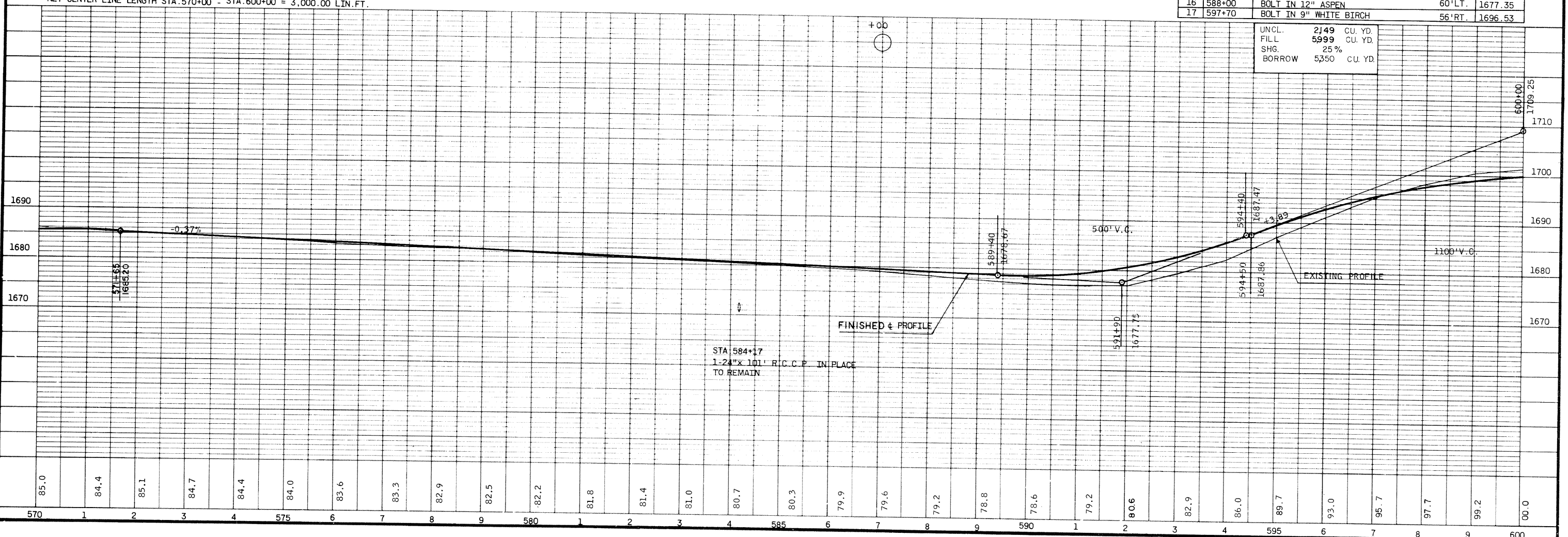


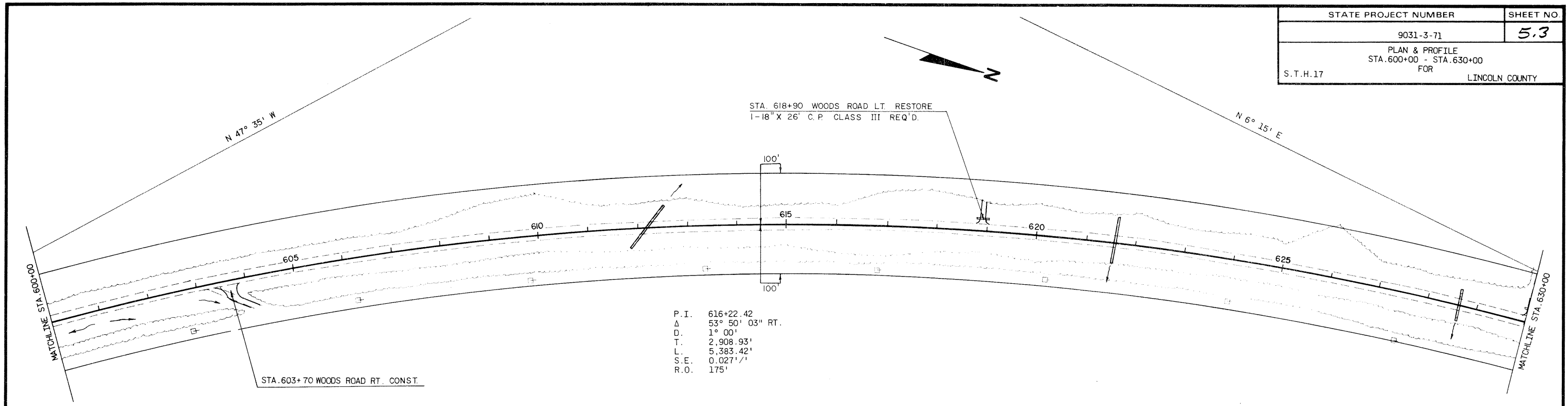
NET CENTER LINE LENGTH STA. 570+00 - STA. 600+00 = 3,000.00 LIN. FT.

BENCH MARKS

NO.	STATION	DESCRIPTION	ELEV.
15	577+00	BOLT IN 10" WHITE BIRCH	57' RT. 1678.58
16	588+00	BOLT IN 12" ASPEN	60' LT. 1677.35
17	597+70	BOLT IN 9" WHITE BIRCH	56' RT. 1696.53

UNCL.	2149	CU. YD.
FILL	5999	CU. YD.
SHG.	25 %	
BORROW	5350	CU. YD.



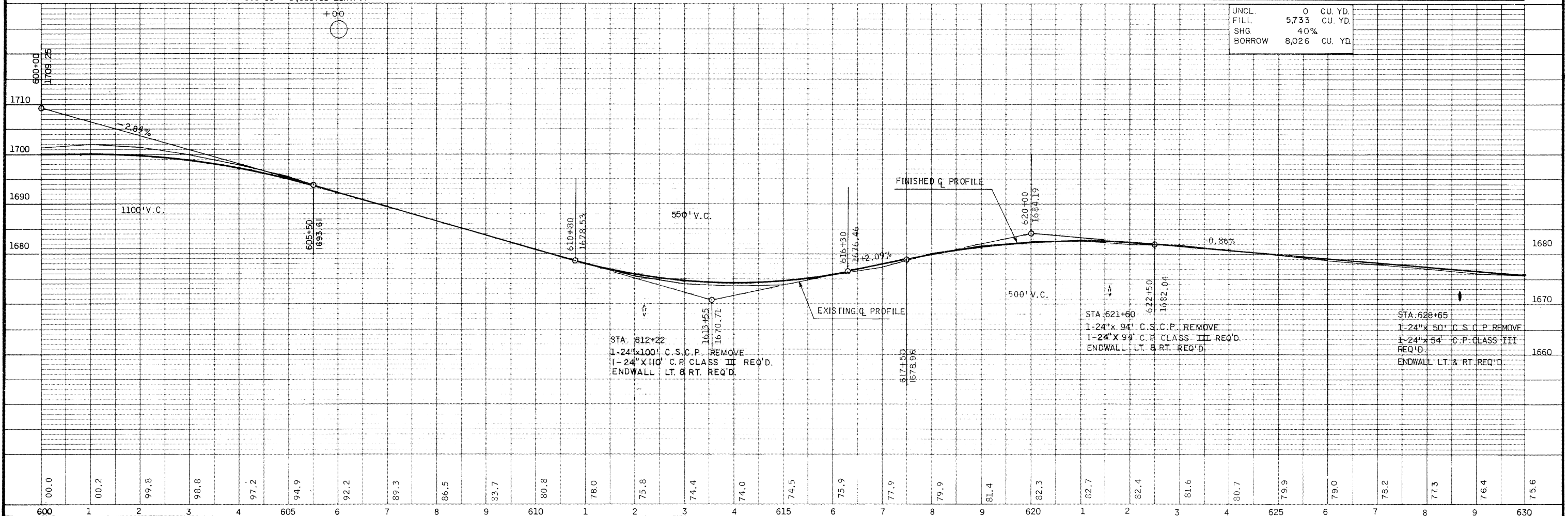


P. I. 616+22.42
 Δ 53° 50' 03" RT.
 D. 1° 00'
 T. 2,908.93'
 L. 5,383.42'
 S.E. 0.027' / 1'
 R.O. 175'

NET CENTERLINE LENGTH STA. 600+00 - STA. 630+00 = 3,000.00 LIN. FT.

BENCH MARKS			
NO.	STATION	DESCRIPTION	ELEV.
18	609+80	BOLT IN 8" NORWAY PINE	96' LT. 1681.94
19	622+25	BOLT IN 12" OAK	68' LT. 1680.00

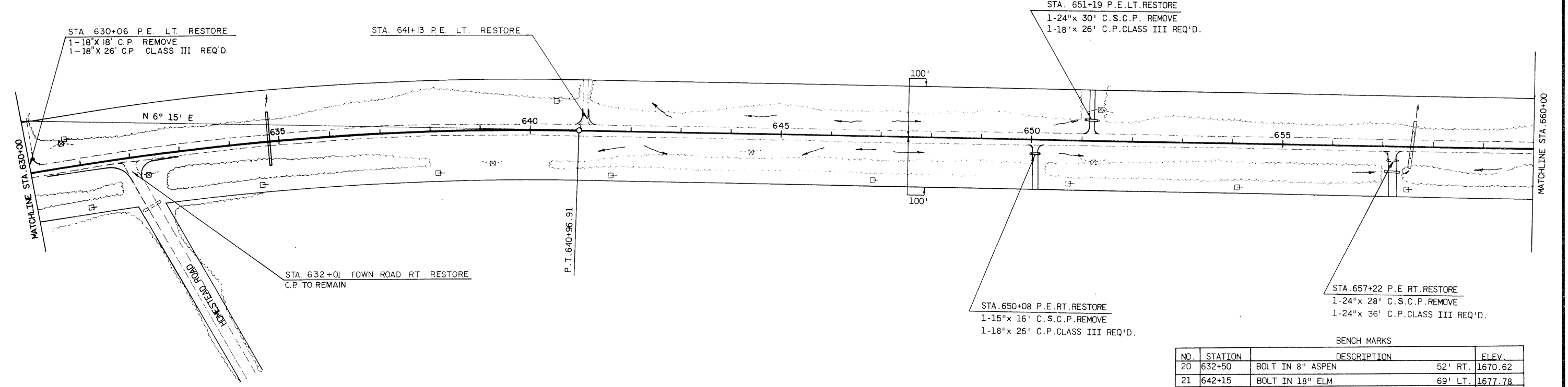
UNCL.	0	CU. YD.
FILL	5,733	CU. YD.
SHG	40%	
BORROW	8,026	CU. YD.



STA. 612+22
 1-24" X 100' C.S.C.P. REMOVE
 1-24" X 110' C.P. CLASS III REQ'D.
 ENDWALL LT. & RT. REQ'D.

STA. 621+60
 1-24" X 94' C.S.C.P. REMOVE
 1-24" X 94' C.P. CLASS III REQ'D.
 ENDWALL LT. & RT. REQ'D.

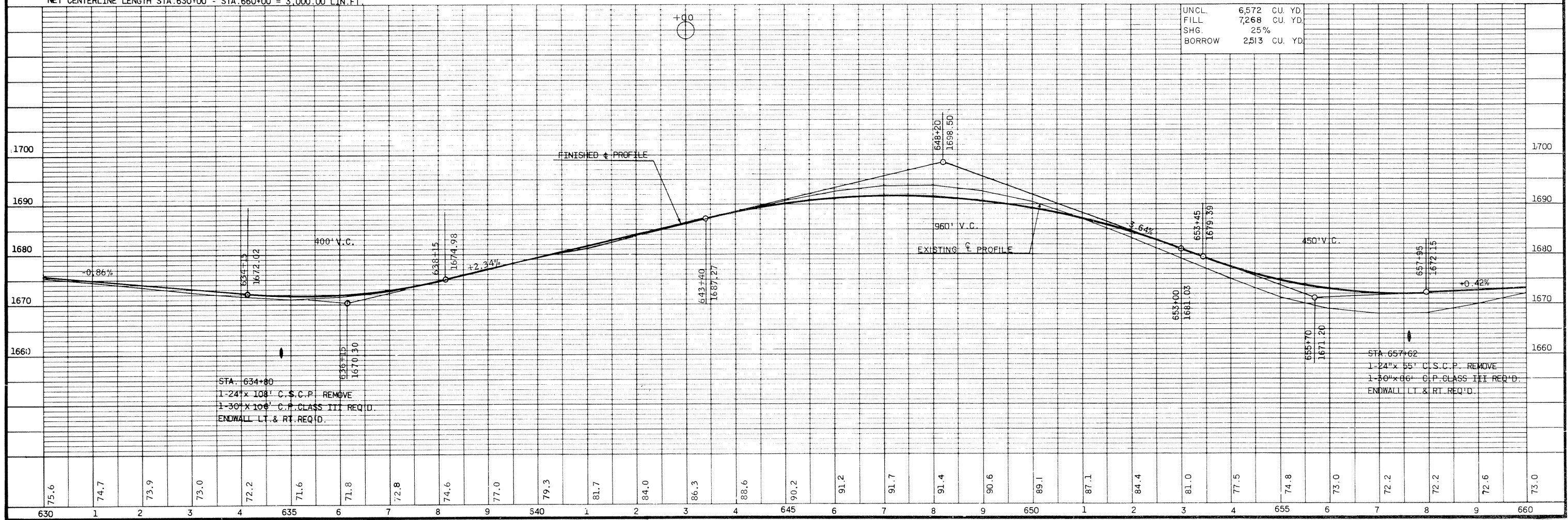
STA. 628+65
 1-24" X 50' C.S.C.P. REMOVE
 1-24" X 54' C.P. CLASS III
 REQ'D.
 ENDWALL LT. & RT. REQ'D.



NET CENTERLINE LENGTH STA. 630+00 - STA. 660+00 = 3,000.00 LIN. FT.

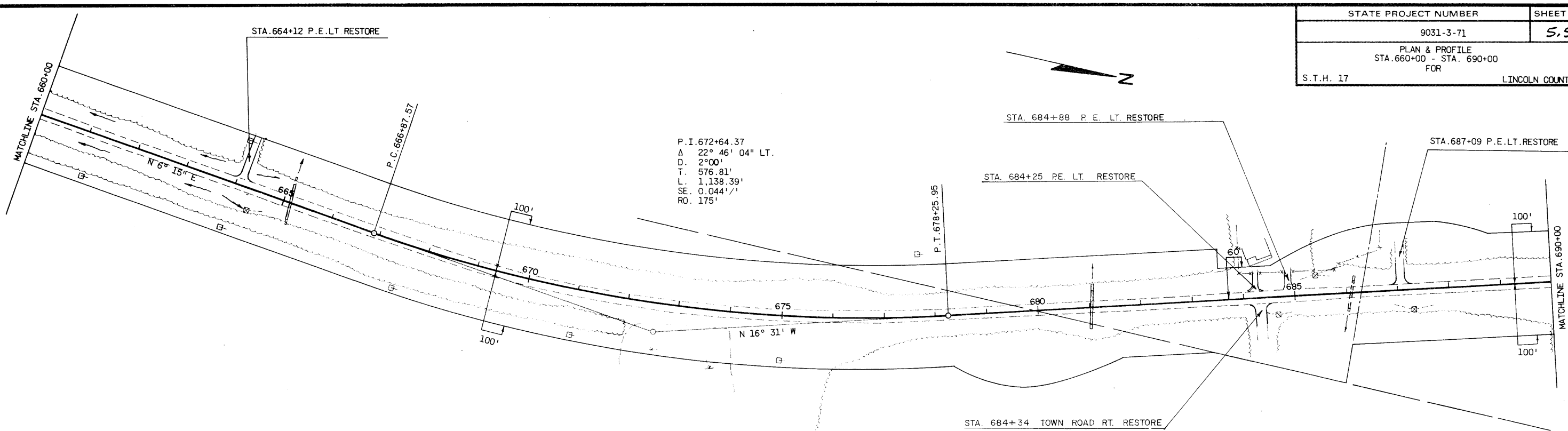
BENCH MARKS			
NO.	STATION	DESCRIPTION	ELEV.
20	632+50	BOLT IN 8" ASPEN	52' RT. 1670.62
21	642+15	BOLT IN 18" ELM	69' LT. 1677.78
22	654+35	BOLT IN 12" MAPLE	55' RT. 1672.21

UNCL.	6,572	CU. YD.
FILL	7,268	CU. YD.
SHG.	25%	
BORROW	2,513	CU. YD.



STA. 634+80
1-24" x 108" C.S.C.P. REMOVE
1-30" x 108" C.P. CLASS III REQ'D.
ENDWALL LT. & RT. REQ'D.

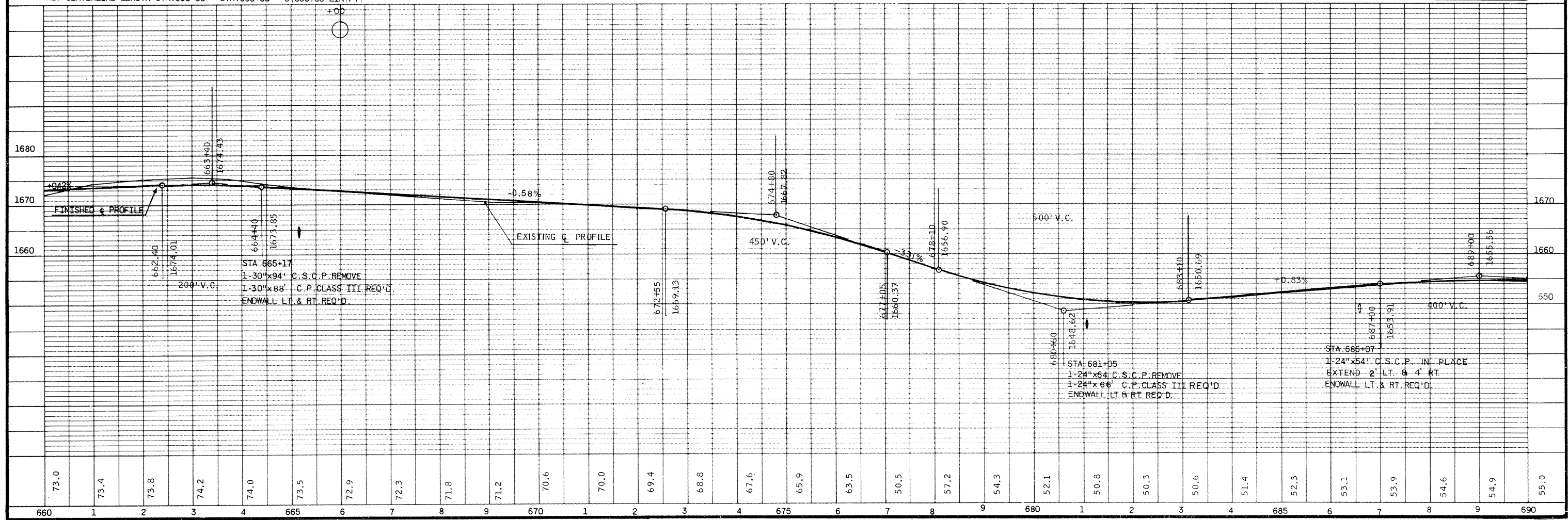
STA. 657+02
1-24" x 55" C.S.C.P. REMOVE
1-30" x 86" C.P. CLASS III REQ'D.
ENDWALL LT. & RT. REQ'D.



BENCH MARKS

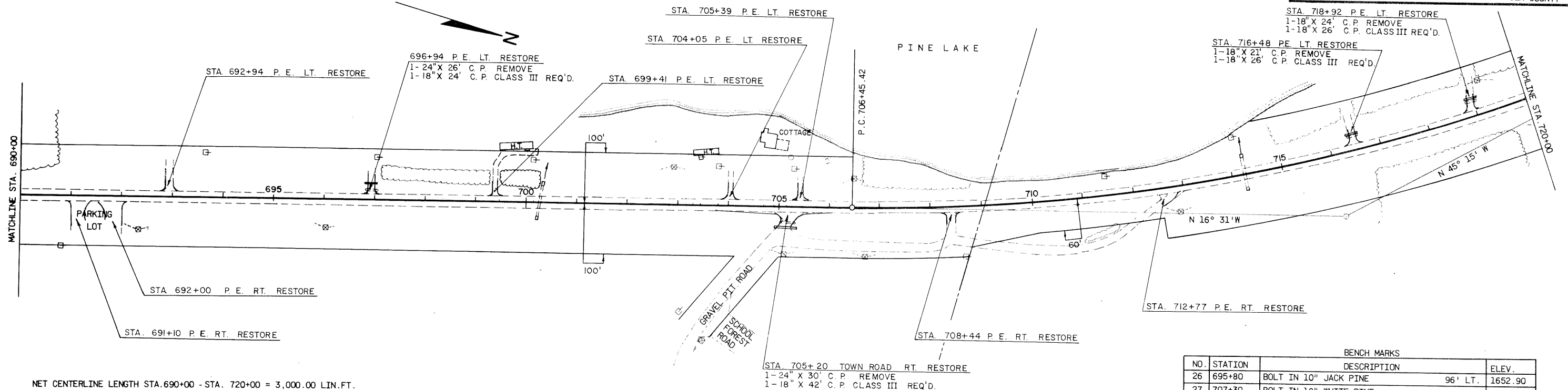
NO	STATION	DESCRIPTION	ELEV.
23	664+60	BOLT IN 12" MAPLE 75' LT.	1668.10
24	674+10	BOLT IN 12" ASPEN 55' RT.	1665.15
25	684+05	R.R. SPIKE 30" W. PINE 41' RT.	1648.43

NET CENTERLINE LENGTH STA. 660+00 - STA. 690+00 = 3,000.00 LIN. FT.



P.I. 716+23.71
 Δ 28° 43' 52.5" LT.
 D. 1° 30'
 T. 978.29'
 L. 1915.42'
 S.E. 0.036'/'
 R.O. 175'

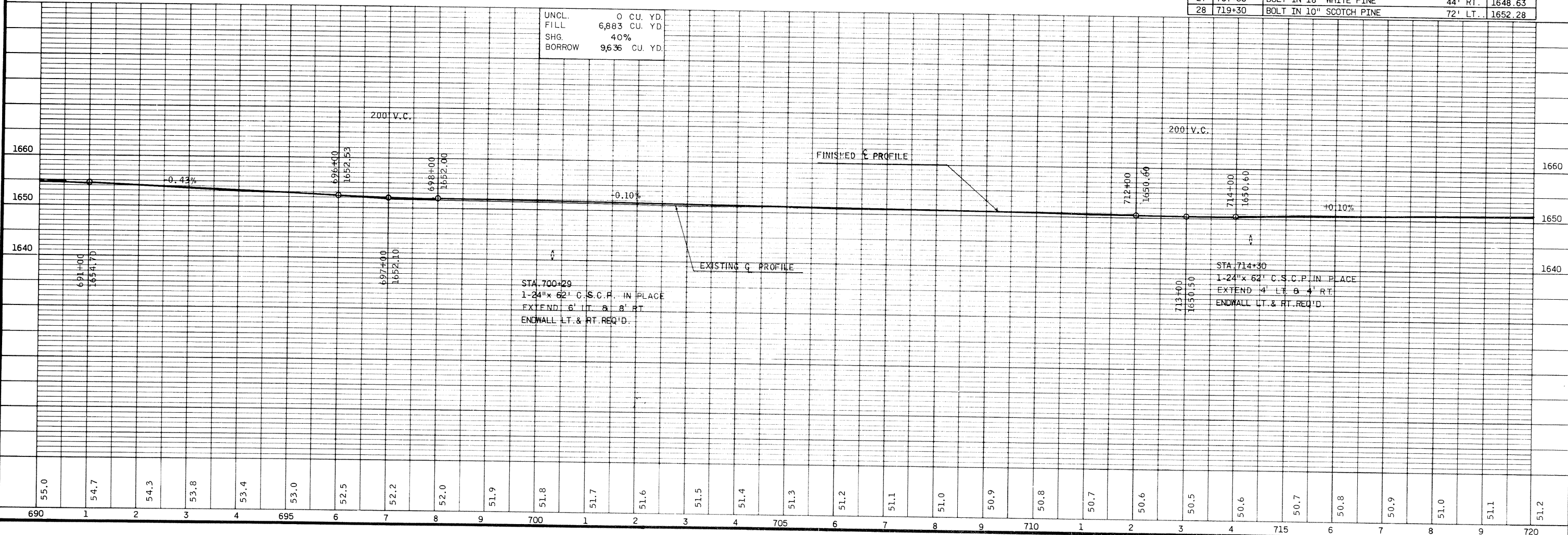
STATE PROJECT NUMBER	SHEET NO.
9031-3-71	5.6
PLAN & PROFILE STA. 690+00 - STA. 720+00 FOR	
S.T.H.17	LINCOLN COUNTY



NET CENTERLINE LENGTH STA. 690+00 - STA. 720+00 = 3,000.00 LIN. FT.

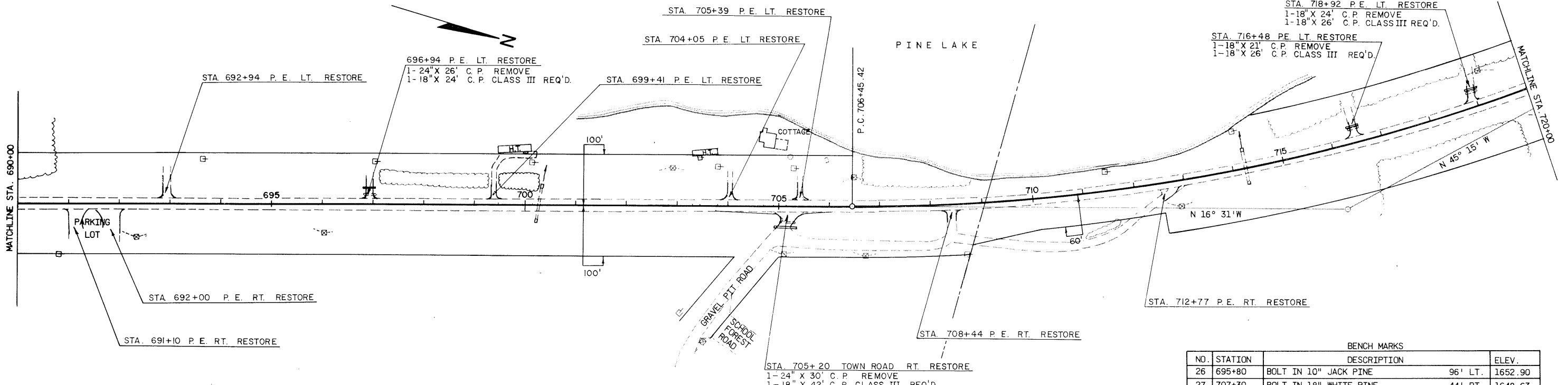
BENCH MARKS			
NO.	STATION	DESCRIPTION	ELEV.
26	695+80	BOLT IN 10" JACK PINE	96' LT. 1652.90
27	707+30	BOLT IN 18" WHITE PINE	44' RT. 1648.63
28	719+30	BOLT IN 10" SCOTCH PINE	72' LT. 1652.28

UNCL. 0 CU. YD.
 FILL 6,883 CU. YD.
 SHG. 40%
 BORROW 9,636 CU. YD.



P.I. 716+23.71
 Δ 28° 43' 52.5" LT.
 D. 1° 30'
 T. 978.29'
 L. 1915.42'
 S.E. 0.0361'/1'
 R.O. 175'

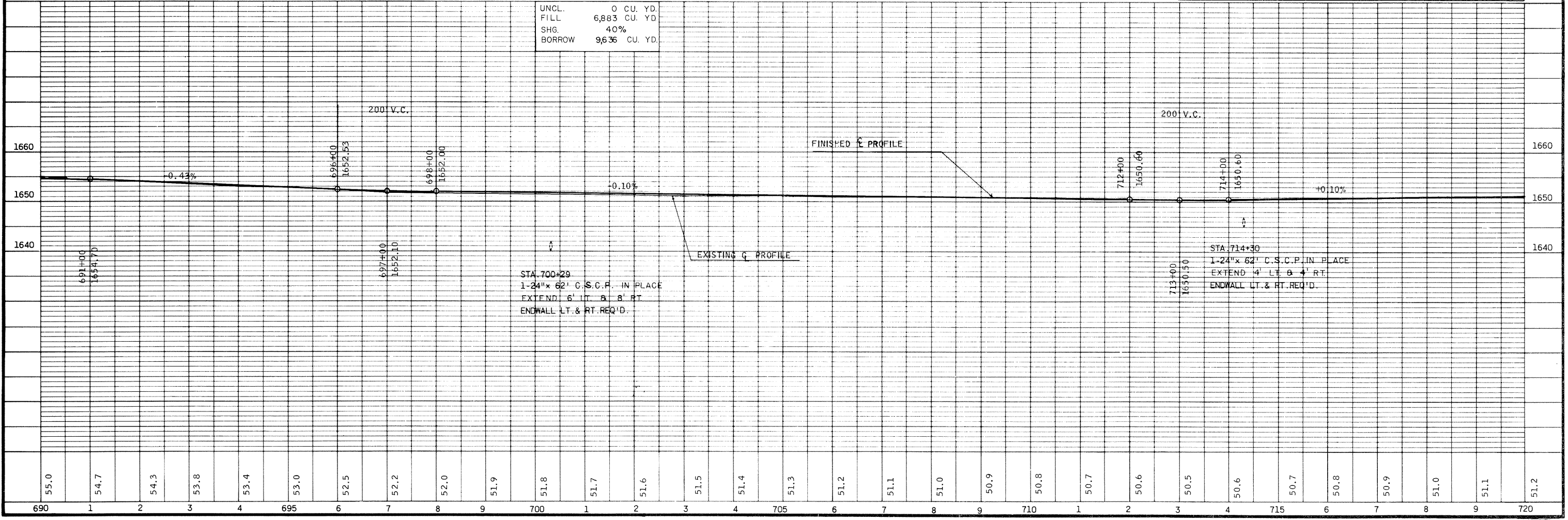
STATE PROJECT NUMBER	SHEET NO.
9031-3-71	5.6
PLAN & PROFILE STA. 690+00 - STA. 720+00 FOR	
S.T.H. 17	LINCOLN COUNTY



NET CENTERLINE LENGTH STA. 690+00 - STA. 720+00 = 3,000.00 LIN. FT.

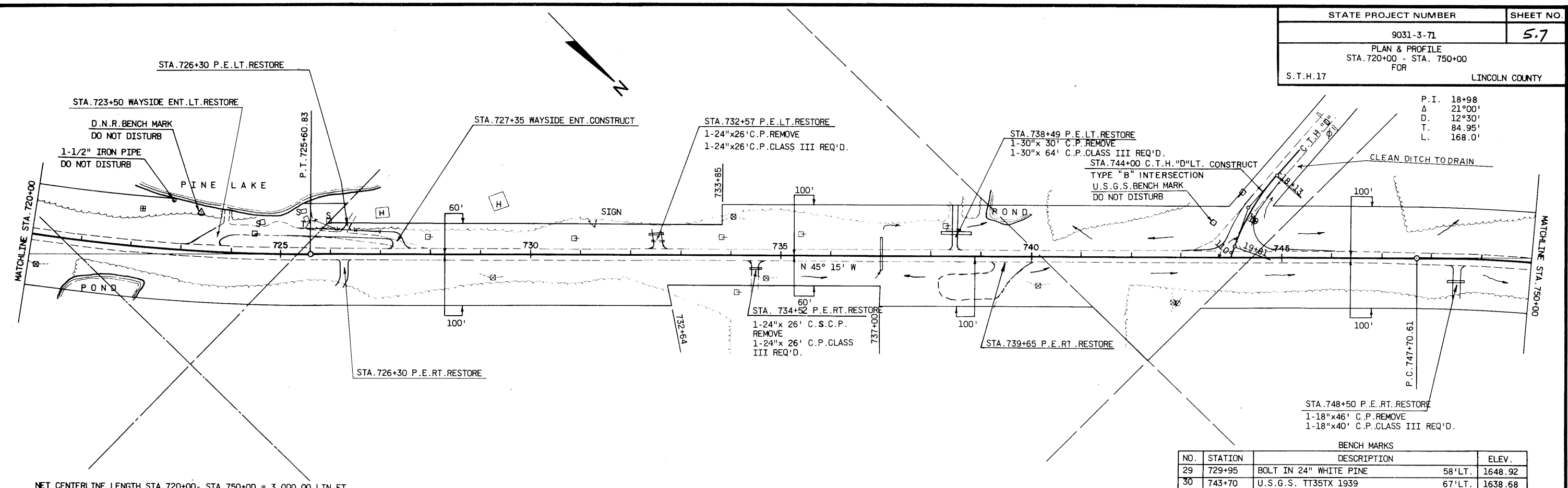
BENCH MARKS			
NO.	STATION	DESCRIPTION	ELEV.
26	695+80	BOLT IN 10" JACK PINE	96' LT. 1652.90
27	707+30	BOLT IN 18" WHITE PINE	44' RT. 1648.63
28	719+30	BOLT IN 10" SCOTCH PINE	72' LT. 1652.28

UNCL.	0 CU. YD.
FILL	6,883 CU. YD.
SHG.	40%
BORROW	9,636 CU. YD.



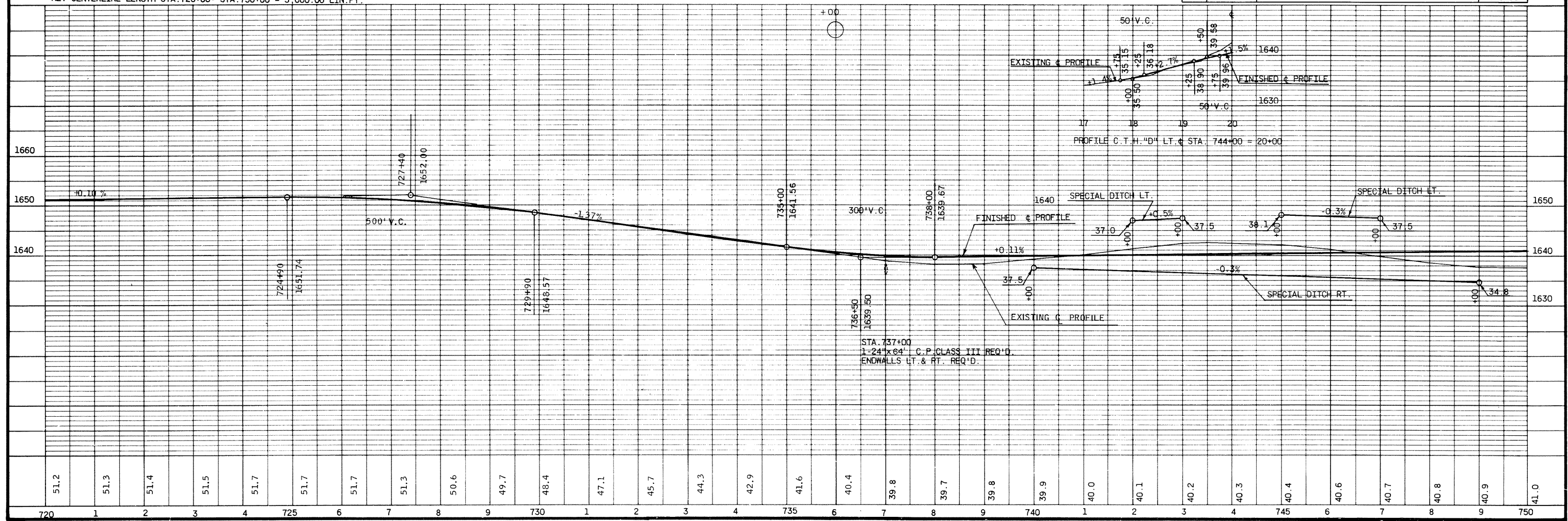
STATE PROJECT NUMBER	SHEET NO.
9031-3-71	5.7
PLAN & PROFILE	
STA. 720+00 - STA. 750+00	
FOR	
S.T.H. 17	LINCOLN COUNTY

P.I. 18+98
 Δ 21°00'
 D. 12°30'
 T. 84.95'
 L. 168.0'

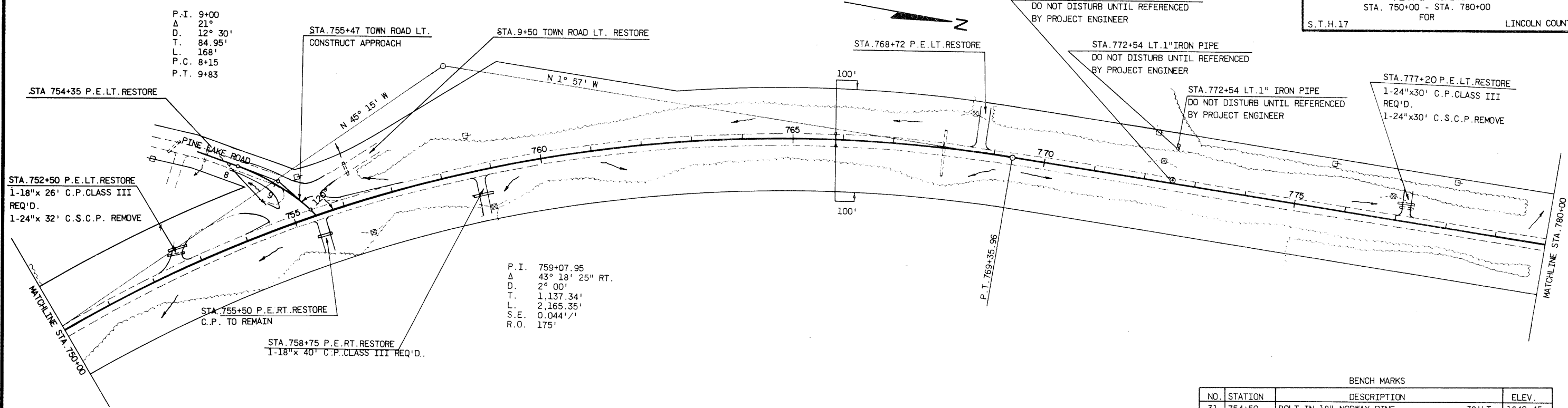


NET CENTERLINE LENGTH STA. 720+00 - STA. 750+00 = 3,000.00 LIN. FT.

BENCH MARKS			
NO.	STATION	DESCRIPTION	ELEV.
29	729+95	BOLT IN 24" WHITE PINE	58'LT. 1648.92
30	743+70	U.S.G.S. TT35TX 1939	67'LT. 1638.68



STATE PROJECT NUMBER	SHEET NO.
9031-3-71	5.8
PLAN & PROFILE	
STA. 750+00 - STA. 780+00	
FOR	
S.T.H.17	LINCOLN COUNTY

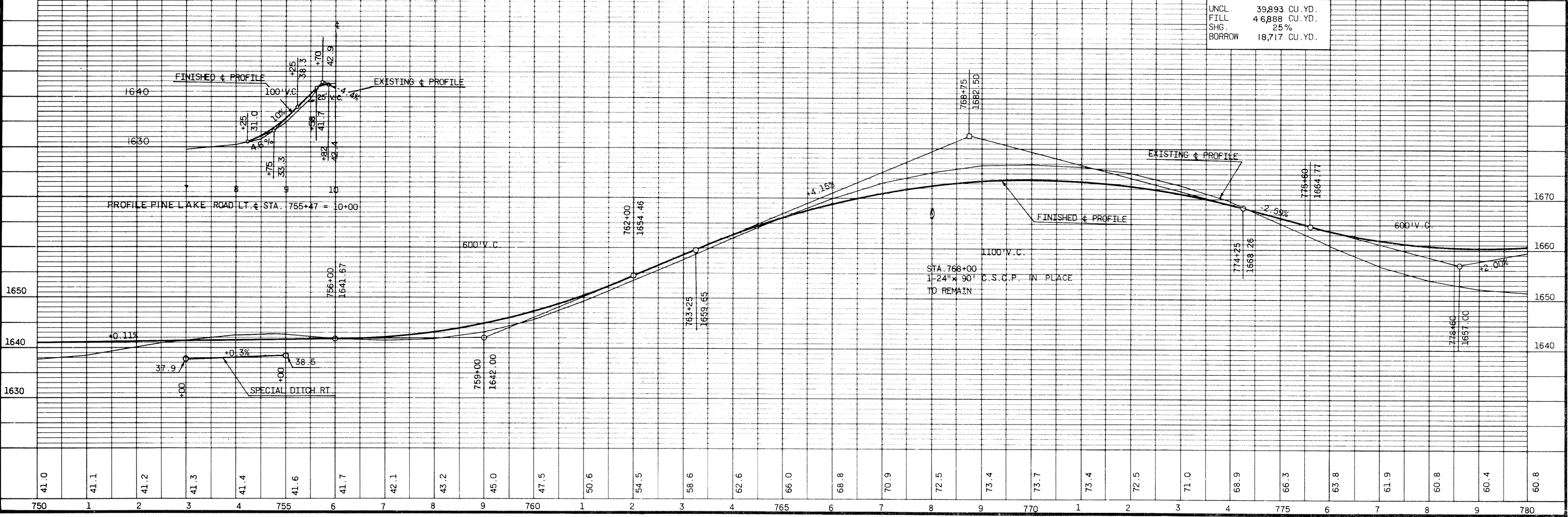


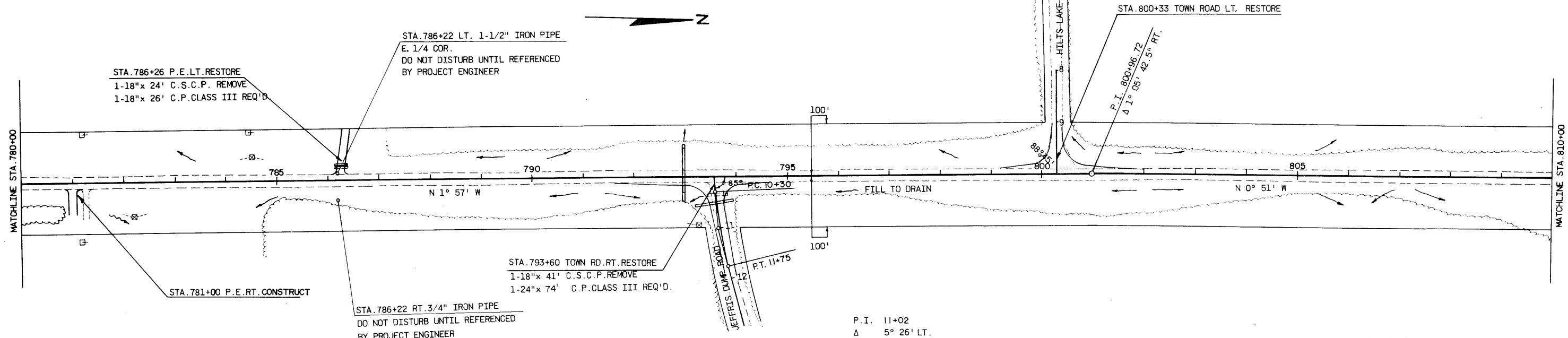
NET CENTERLINE LENGTH STA. 750+00 - STA. 780+00 = 3,000.00 LIN. FT.

BENCH MARKS

NO.	STATION	DESCRIPTION	ELEV.
31	754+50	BOLT IN 18" NORWAY PINE	78' LT. 1640.45
32	766+40	BOLT IN 10" WHITE BIRCH	65' RT. 1667.55
33	777+50	BOLT IN 6" BASSWOOD	58' LT. 1658.98

UNCL.	39,893 CU. YD.
FILL	46,888 CU. YD.
SHG.	25%
BORROW	18,717 CU. YD.

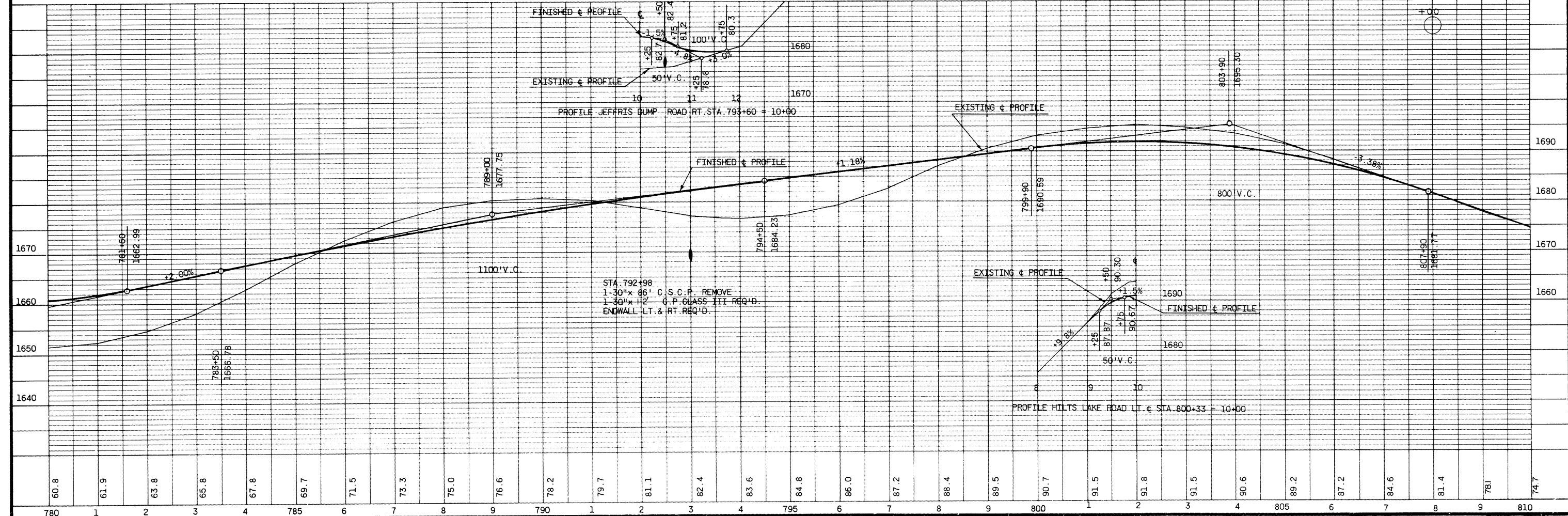




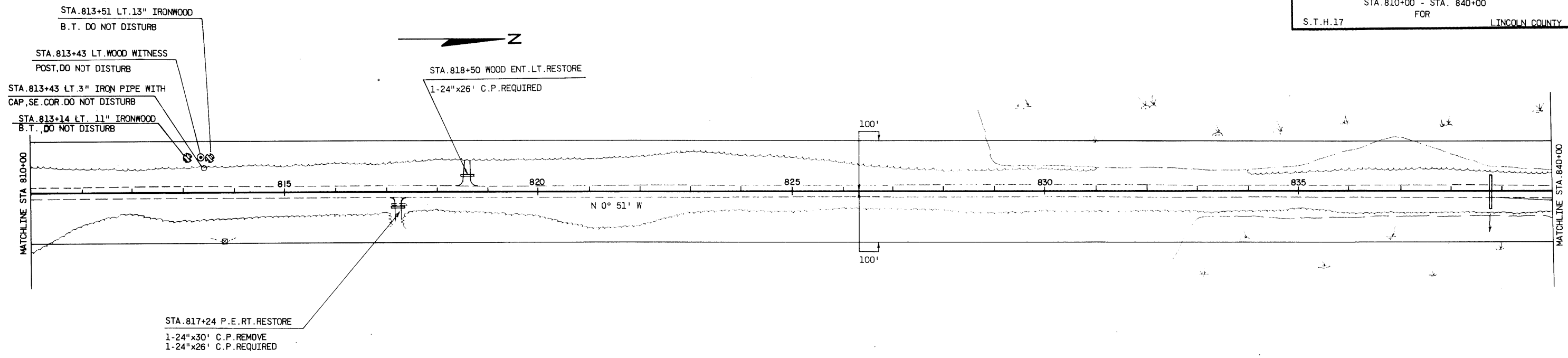
P.I. 11+02
 A 5° 26' LT.
 D. 3° 45'
 T. 72.5'
 L. 145'

BENCH MARKS			
NO.	STATION	DESCRIPTION	ELEV.
34	789+90	BOLT IN 16" OAK 80' LT.	1674.20
35	799+90	R.R. SPIKE IN 6" MAPLE 58' LT.	1693.20
36	810+25	BOLT IN 10" WHITE BIRCH 77' LT.	1674.07

NET CENTERLINE LENGTH STA. 780+00 - STA. 810+00 = 3,000.00 LIN. FT.



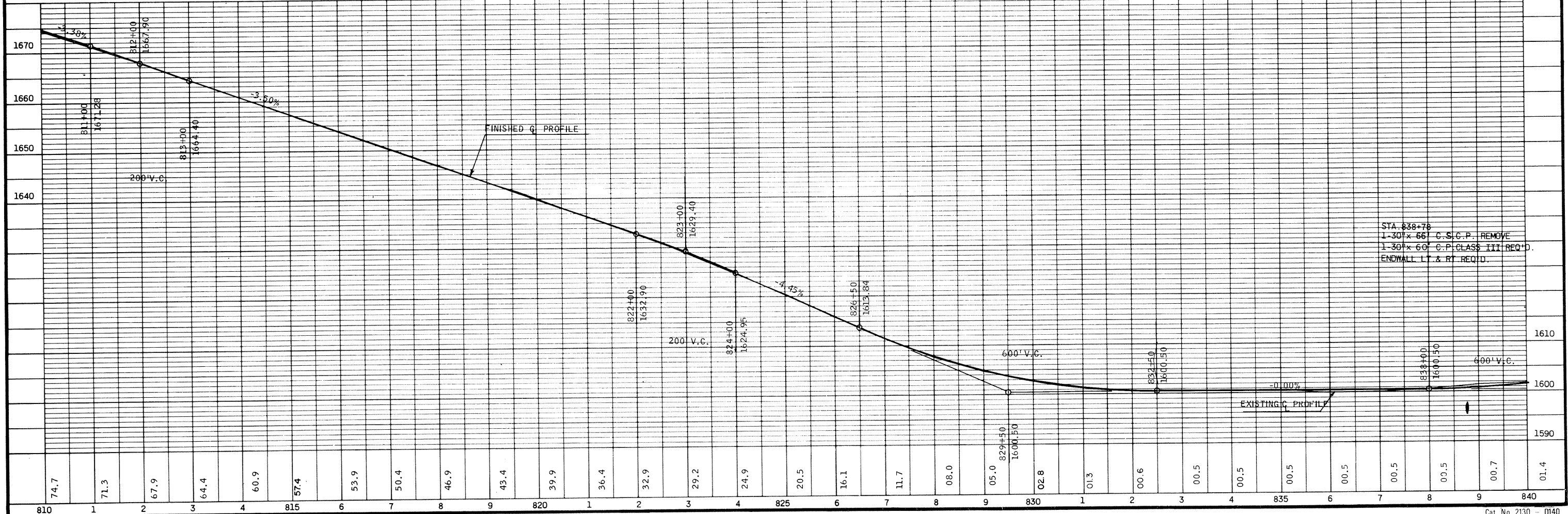
STATE PROJECT NUMBER	SHEET NO.
9031-3-71	5.10
PLAN & PROFILE	
STA. 810+00 - STA. 840+00	
FOR LINCOLN COUNTY	
S.T.H. 17	



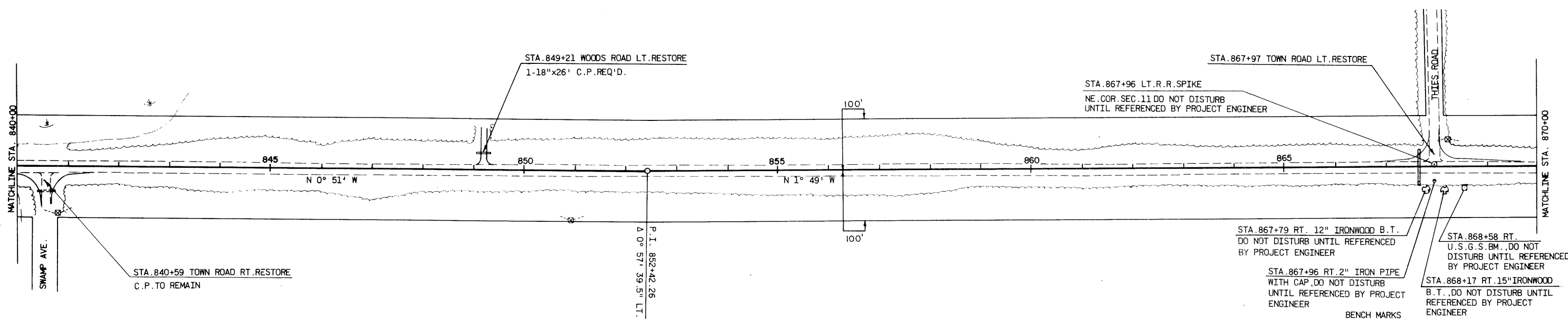
BENCH MARKS

NO.	STATION	DESCRIPTION	ELEV.
37	819+65	BOLT IN 6" BASSWOOD	64' RT. 1638.73
38	829+70	BOLT IN 6" WHITE BIRCH	63' RT. 1596.06

NET CENTERLINE LENGTH STA. 810+00 - STA. 840+00 = 3,000.00 LIN. FT.



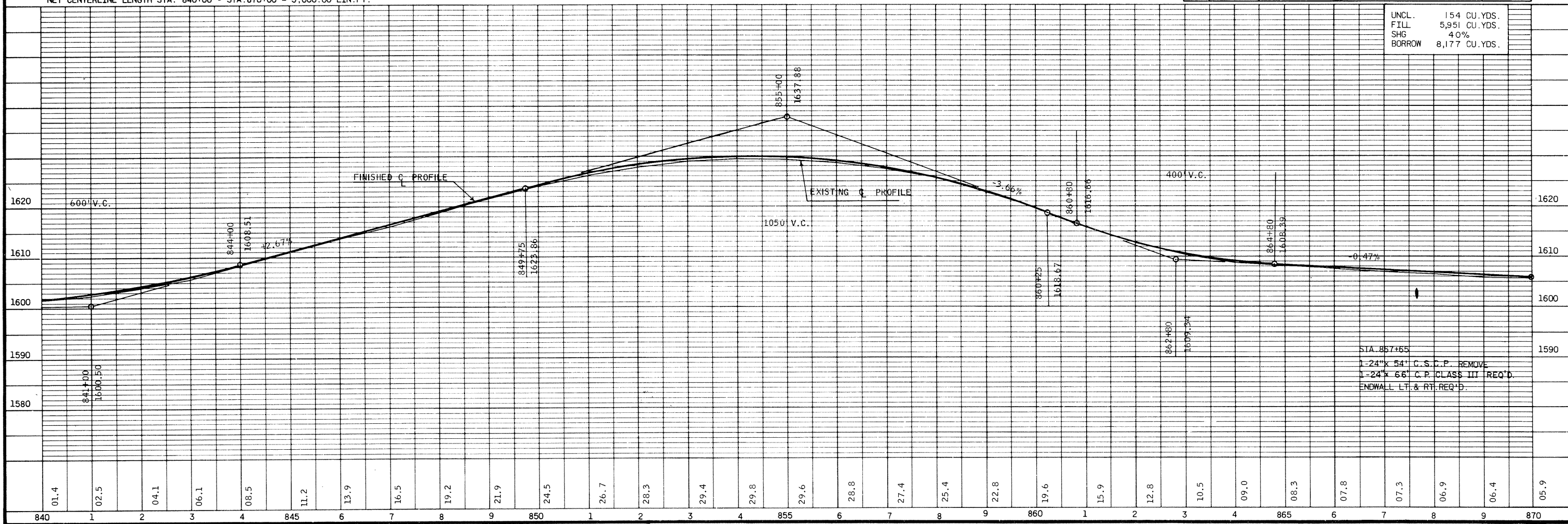
STA. 838+70
 1-30"x 66" C.S.C.P. REMOVE
 1-30"x 60" C.P. CLASS III REQ'D.
 ENDWALL LT & RT REQ'D.



NET CENTERLINE LENGTH STA. 840+00 - STA. 870+00 = 3,000.00 LIN. FT.

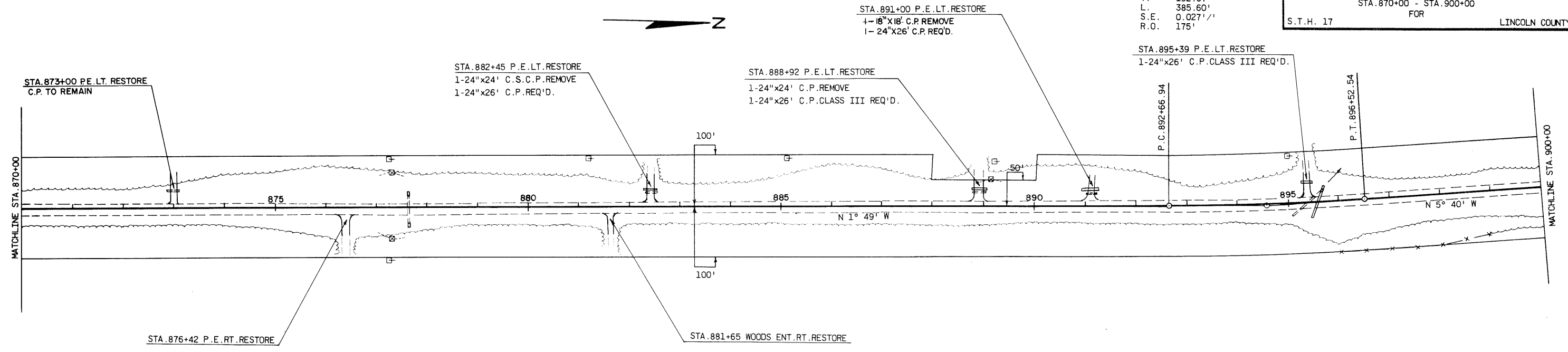
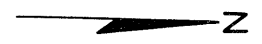
NO.	STATION	DESCRIPTION	ELEV.
39	840+25	BOLT IN 18" ASPEN	1598.67
40	851+10	BOLT IN 10" WHITE BIRCH	1628.18
41	860+05	R.R. SPIKE IN 12' WHITE BIRCH	1617.65
42	868+60	U.S.G.S. "42" SAN 1964"	1600.74

NO.	STATION	DESCRIPTION	ELEV.
UNCL.		154 CU. YDS.	
FILL		5,951 CU. YDS.	
SHG		40%	
BORROW		8,177 CU. YDS.	



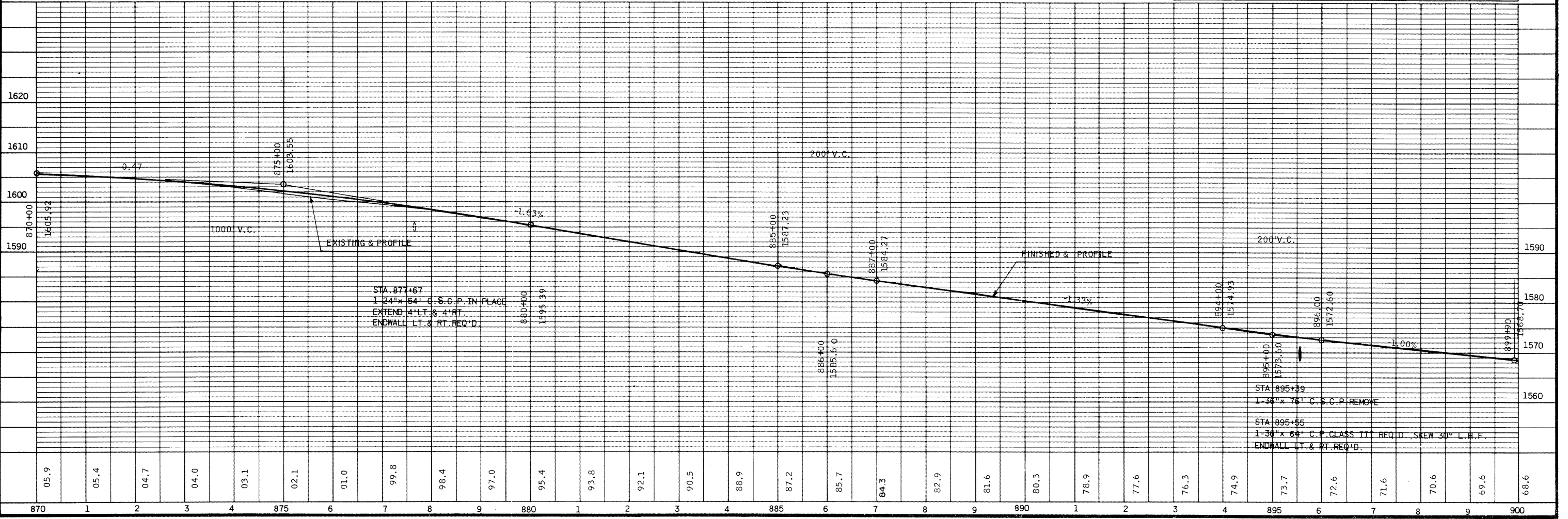
STATE PROJECT NUMBER	SHEET NO.
9031-3-71	5.12
PLAN & PROFILE STA. 870+00 - STA. 900+00 FOR	
S.T.H. 17	LINCOLN COUNTY

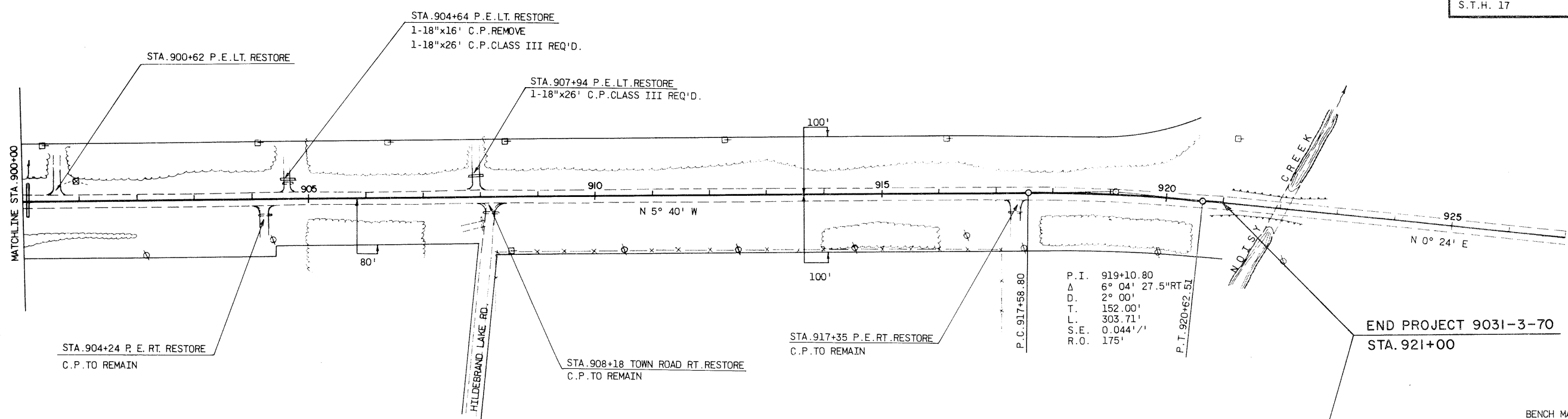
P.I. 894+59.81
 Δ 3° 51' 21.5" LT.
 D. 1° 00'
 T. 192.87'
 L. 385.60'
 S.E. 0.027' /'
 R.O. 175'



NET CENTERLINE LENGTH STA. 870+00 - STA. 900+00 = 3,000.00 LIN. FT.

BENCH MARKS			
NO.	STATION	DESCRIPTION	ELEV.
43	880+60	R.R. SPIKE IN 18" JACK PINE	74' LT. 1599.15
44	890+60	R.R. SPIKE IN 14" JACK PINE	80' LT. 1582.08





NET CENTERLINE LENGTH STA. 900+00 - STA. 921+00 = 2,100.00 LIN. FT.

BENCH MARKS

NO.	STATION	DESCRIPTION	ELEV.
45	900+70	R.R. SPIKE IN 15" ELM	75' LT. 1565.56
46	912+55	R.R. SPIKE IN 16" ASPEN	64' LT. 1558.74
47	921+90	RED PAINT MARK ON CONC. CULV. COLLAR	30' RT. 1554.22

