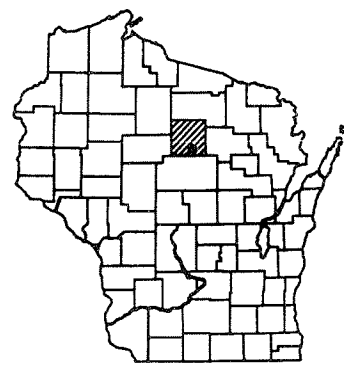


9675-10-70 LINCOLN COUNTY

INDEX OF SHEETS

Sheet No. 1	Title
Sheet No. 2-2.27	Typical Sections and Details
Sheet No. 3-3.4	Estimate of Quantities
Sheet No. 3A-3G	Miscellaneous Quantities
Sheet No. -	Right of Way Plat
Sheet No. 5-5.10	Plan and Profile
Sheet No. 6-6.90	Standard Detail Drawings
Sheet No. -	Sign Plates
Sheet No. -	Structure Plans
Sheet No. 9-9.4	Computer Earthwork Data
Sheet No. 9.5-9.17	Cross Sections

TOTAL SHEETS = 101

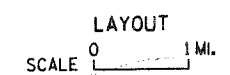
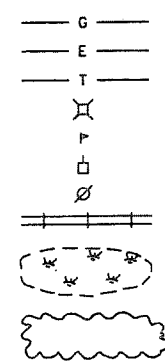


DESIGN DESIGNATION

A.D.T. 1996	=	5,610
A.D.T. 2016	=	7,480
D.H.V.	=	
D.	=	60-40
T.	=	
DESIGN SPEED	=	45 MPH
ESALS	=	1,438,100

CONVENTIONAL SIGNS

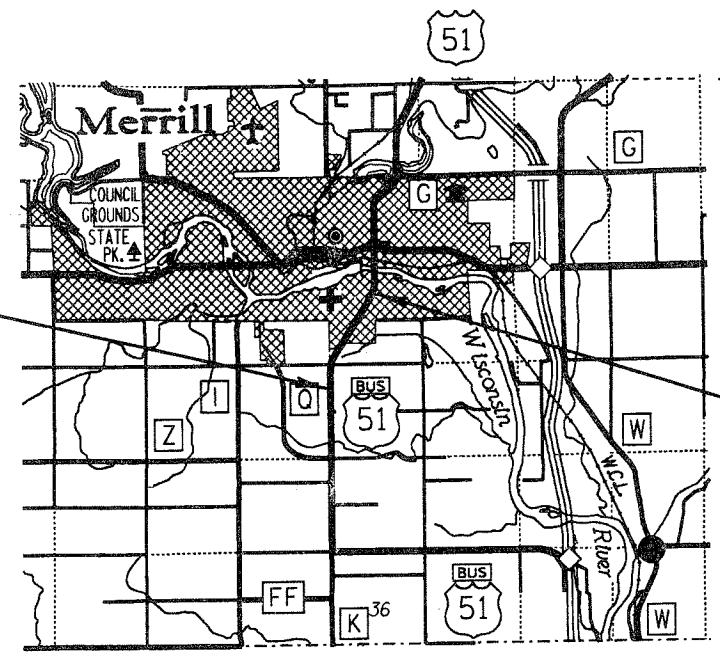
COUNTY LINE	-----	COMBUSTIBLE FLUIDS	
CORPORATE LIMITS	-----	UNDERGROUND UTILITIES	
PROPERTY LINE	----- P.L. 58.1	GAS	--- G ---
LOT LINE	-----	ELECTRIC	--- E ---
LIMITED EASEMENT	-----	TELEPHONE OR TELEGRAPH	--- T ---
EXISTING RIGHT OF WAY	-----	SERVICE PEDESTAL	
PROPOSED OR NEW R/W LINE	-----	CABLE MARKER	
SURVEY LINE	-----	POWER POLE	
SLOPE INTERCEPT	-----	TELEPHONE POLE	
ORIGINAL GROUND	-----	RAILROAD	=====
MARSH OR ROCK PROFILE	-----	MARSH AREA	
EXISTING CULVERT	-----	WOODED OR SHRUB AREA	
PROPOSED CULVERT (Box or Pipe)			
CULVERT (Profile View)			



TOTAL NET LENGTH OF CENTERLINE = 1.004 MI.

BEGIN PROJECT
STA. 500+00
X 2,079,135.174
Y 484,306.905

END PROJECT
STA. 553+00
X 2,081,531.478
Y 491,460.229



STATE PROJECT NUMBER
9675-10-70

STATE OF WISCONSIN DEPARTMENT OF TRANSPORTATION PLAN OF PROPOSED IMPROVEMENT JOE SNOW ROAD - O'DAY STREET BUS. 51 LINCOLN COUNTY

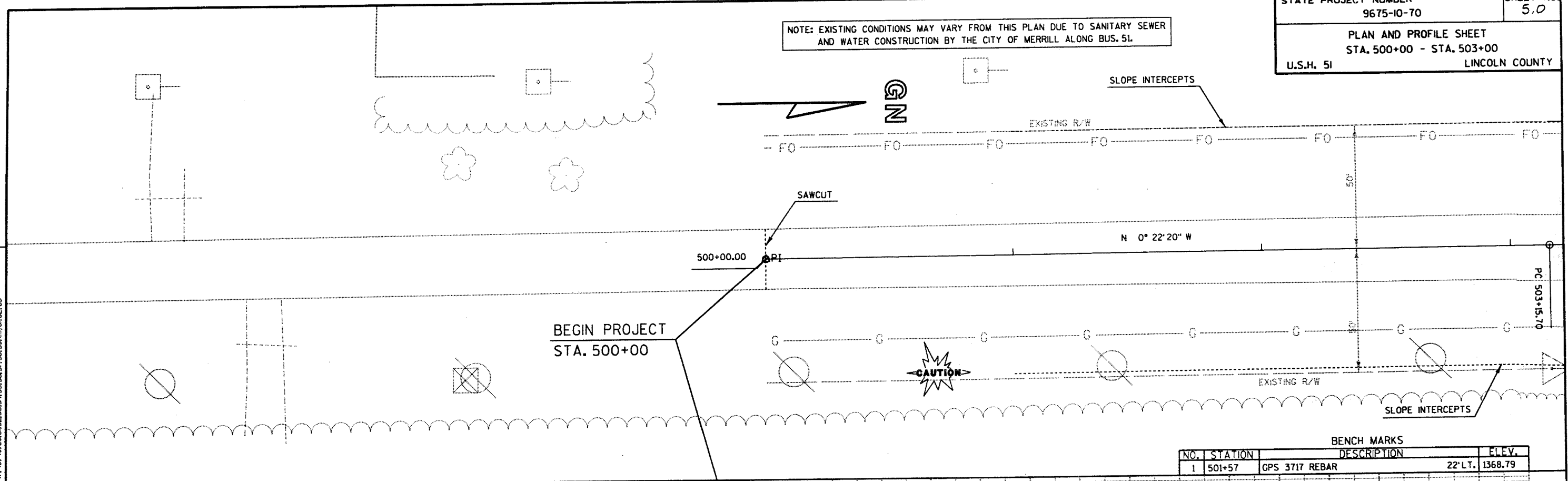
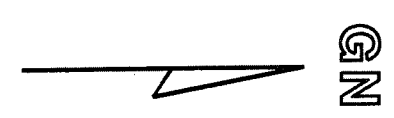
STATE PROJECT	FEDERAL PROJECT	
	PROJECT	CONTRACT
9675-10-70	STP 5500(3)	1



STATE OF WISCONSIN DEPARTMENT OF TRANSPORTATION	
PREPARED BY	
Surveyor	JACK R. WALLIN
Designer	JOSEPH C. BENBENEK
District Examiner	EBEN MILLER
District Supervisor	MARVIN N. LASPA
Proj. Dev. Engineer	JAMES WHALEN
C.O. Examiner	Ron Calkins
APPROVED FOR DISTRICT OFFICE	
DATE: 7/25/05	
AUTHORIZED FOR CENTRAL OFFICE DESIGN	
DATE: 1/11/06	

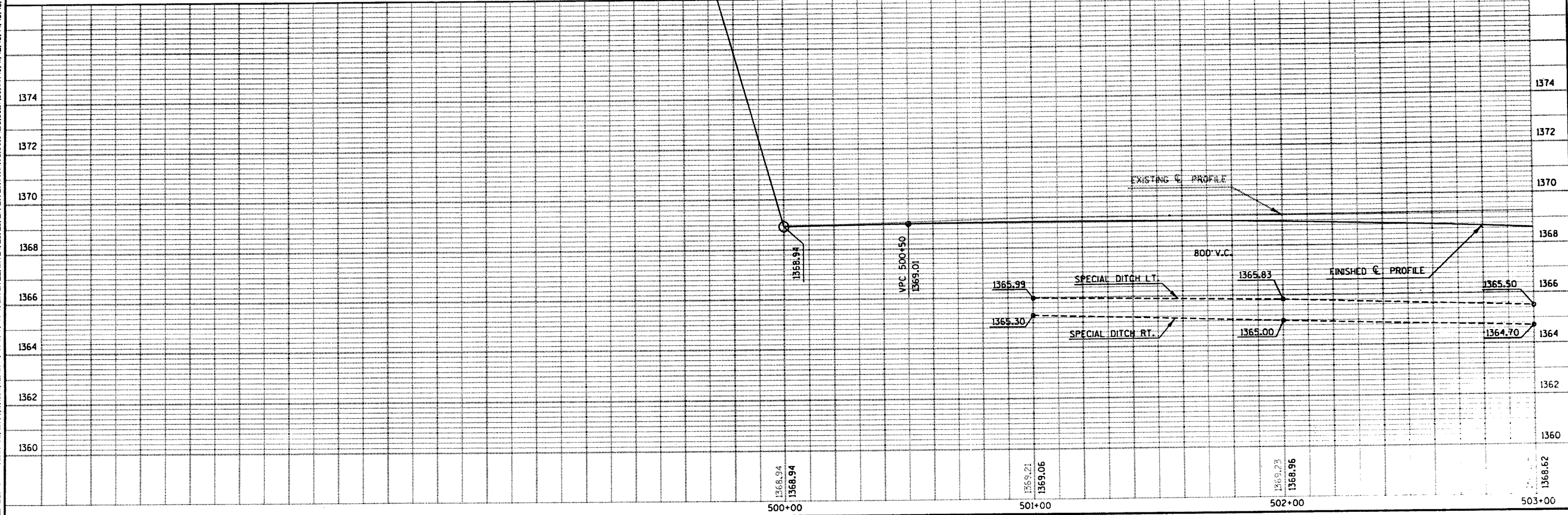
COORDINATES ON THIS PLAN ARE REFERENCED TO THE WISCONSIN COORDINATE SYSTEM, NORTH ZONE

NOTE: EXISTING CONDITIONS MAY VARY FROM THIS PLAN DUE TO SANITARY SEWER AND WATER CONSTRUCTION BY THE CITY OF MERRILL ALONG BUS. 51.



BEGIN PROJECT
 STA. 500+00

BENCH MARKS			
NO.	STATION	DESCRIPTION	ELEV.
1	501+57	GPS 3717 REBAR	22' LT. 1368.79

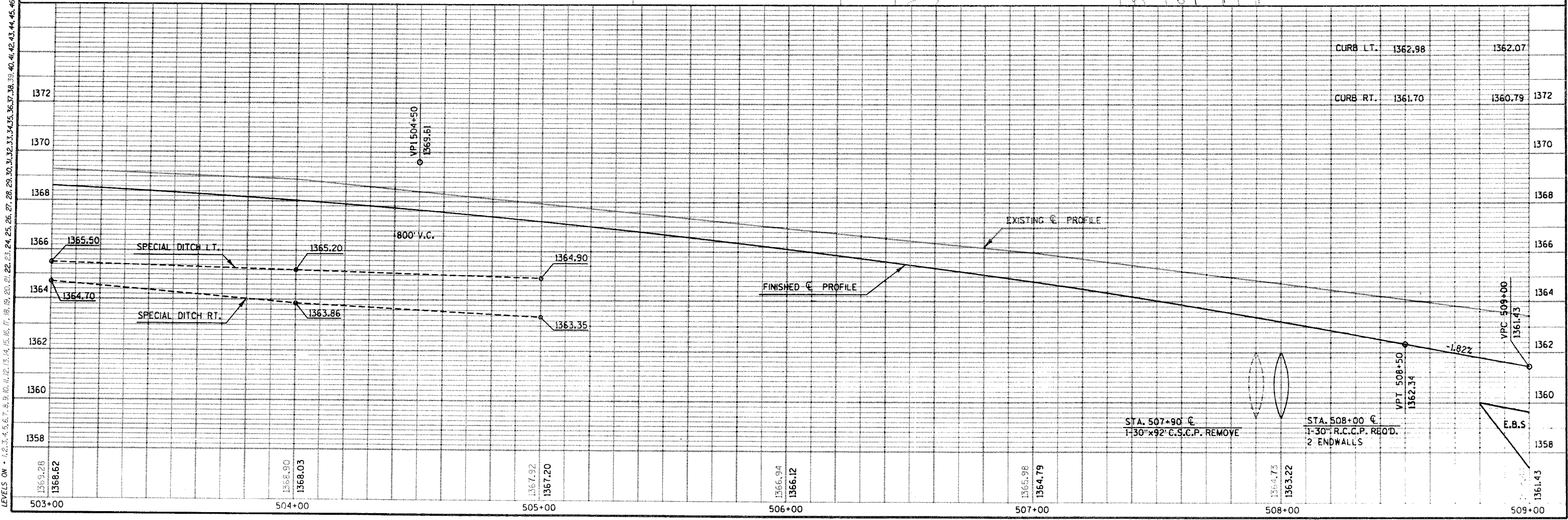
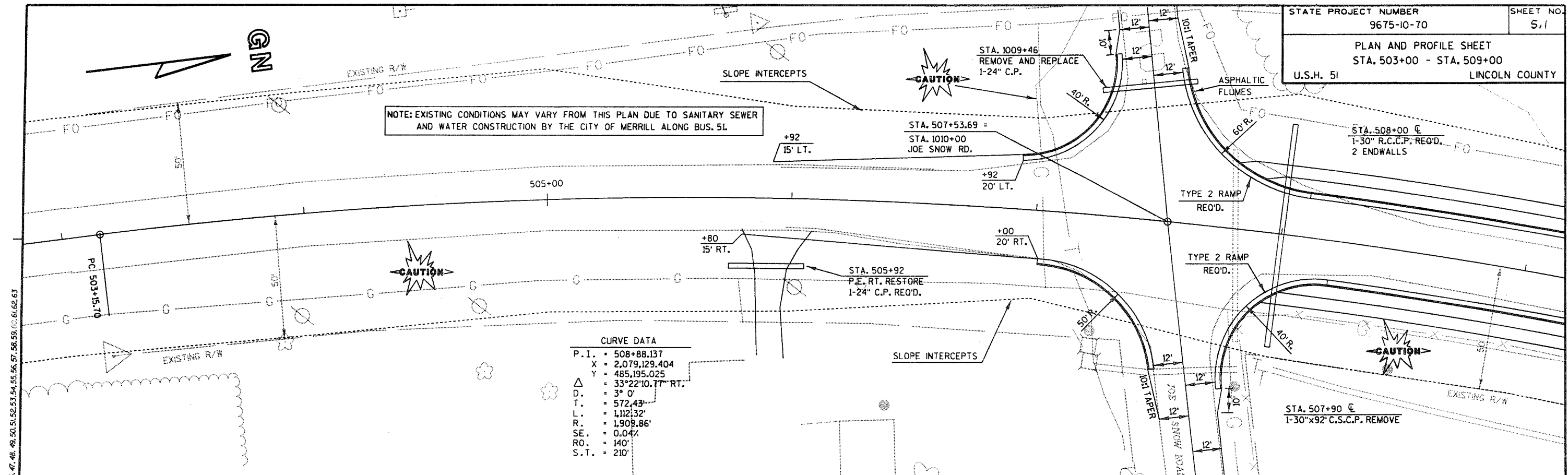


LEVELS ON - 1.2, 3.4, 5.6, 7.8, 9.9, 11.12, 13.14, 15.16, 17.18, 19.20, 21.22, 23.24, 25.26, 27.28, 29.30, 31.32, 33.34, 35.36, 37.38, 39.40, 41.42, 43.44, 45.46, 47.48, 49.50, 51.52, 53.54, 55.56, 57.58, 59.60, 61.62, 63.

NOTE: EXISTING CONDITIONS MAY VARY FROM THIS PLAN DUE TO SANITARY SEWER AND WATER CONSTRUCTION BY THE CITY OF MERRILL ALONG BUS. 51.

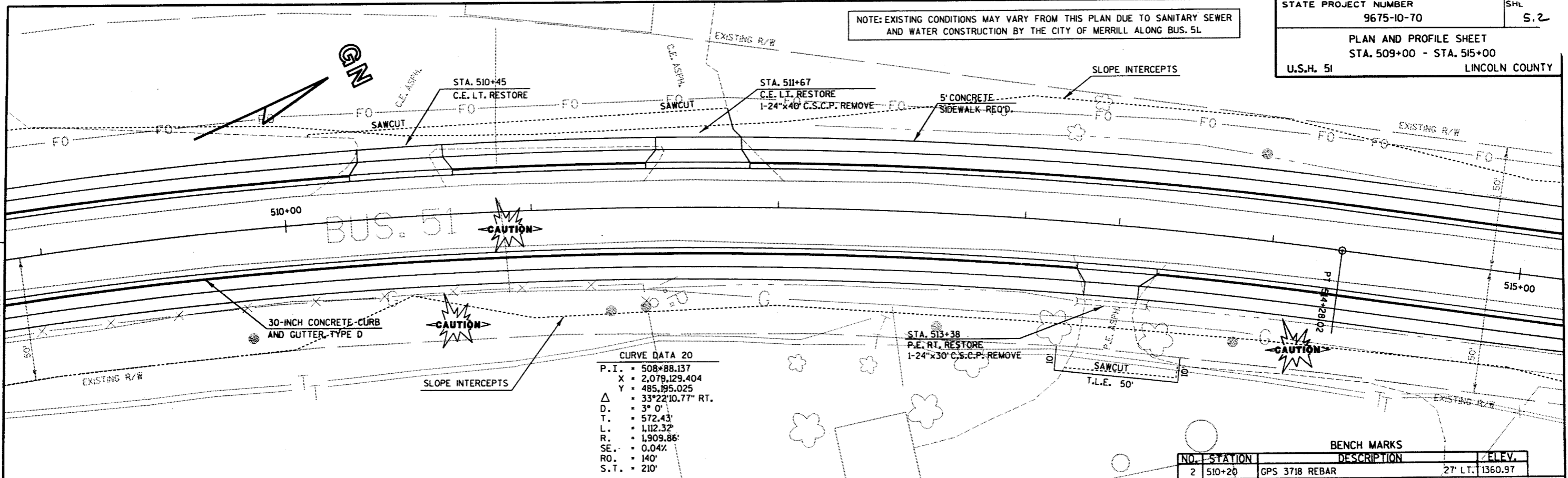
CURVE DATA

P. I.	= 508+88.137
X	= 2,079,129.404
Y	= 485,195.025
Δ	= 33°22'10.77" RT.
D.	= 3° 0'
T.	= 572.43'
L.	= 1,112.32'
R.	= 1,909.86'
SE.	= 0.04%
RO.	= 140'
S.T.	= 210'



LEVELS ON - 1, 2, 3, 4, 5, 6, 7, 8, 9, 10, 11, 12, 13, 14, 15, 16, 17, 18, 19, 20, 21, 22, 23, 24, 25, 26, 27, 28, 29, 30, 31, 32, 33, 34, 35, 36, 37, 38, 39, 40, 41, 42, 43, 44, 45, 46, 47, 48, 49, 50, 51, 52, 53, 54, 55, 56, 57, 58, 59, 60, 61, 62, 63

NOTE: EXISTING CONDITIONS MAY VARY FROM THIS PLAN DUE TO SANITARY SEWER AND WATER CONSTRUCTION BY THE CITY OF MERRILL ALONG BUS. 51

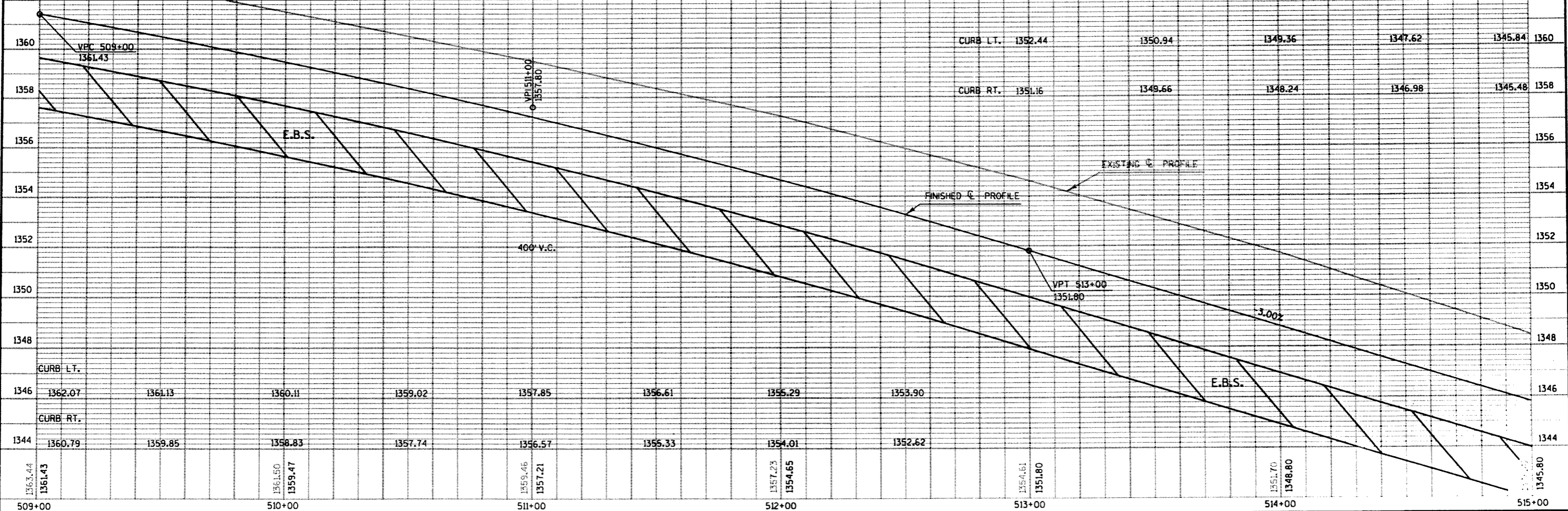


CURVE DATA 20

P.I.	= 508+88.137
X	= 2,079,129.404
Y	= 485,195.025
Δ	= 33°22'10.77" RT.
D.	= 3° 0'
T.	= 572.43'
L.	= 1,112.32'
R.	= 1,909.86'
SE.	= 0.04%
RO.	= 140'
S.T.	= 210'

BENCH MARKS

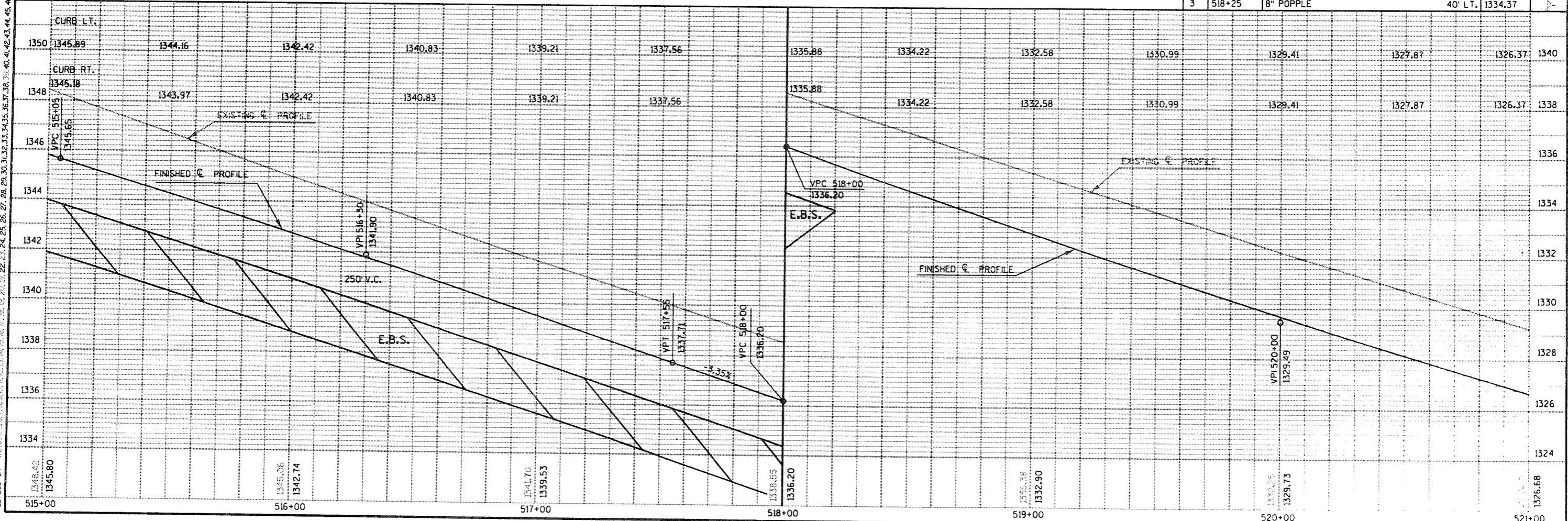
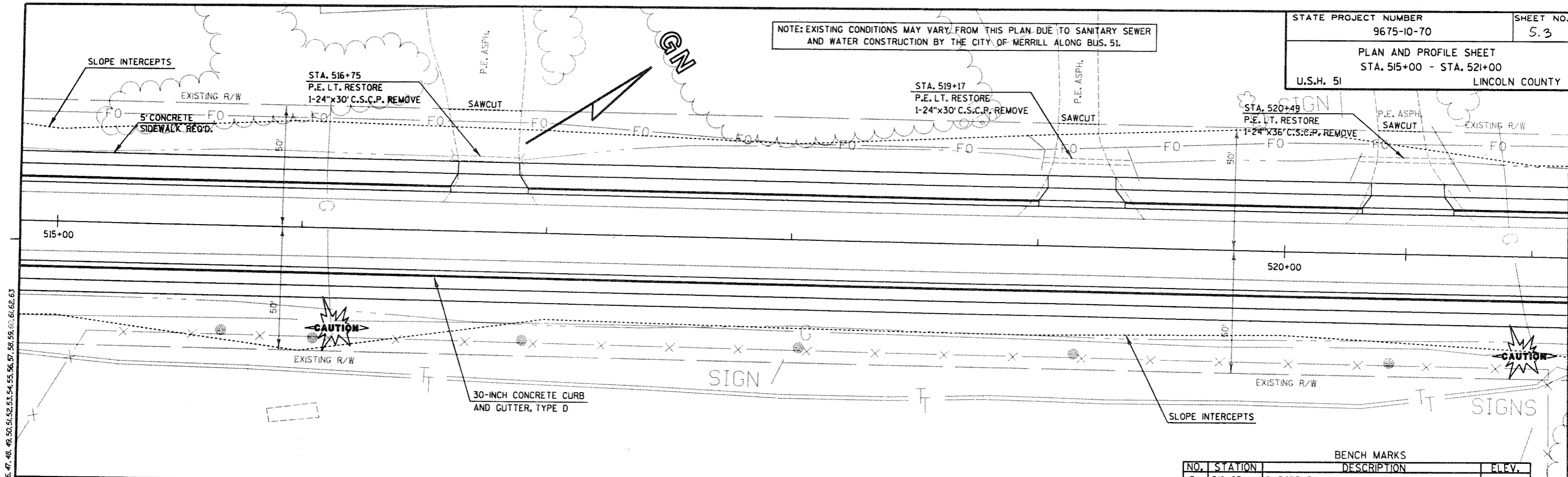
NO.	STATION	DESCRIPTION	ELEV.
2	510+20	GPS 3718 REBAR	27' LT. 1360.97



LEVELS ON 1, 2, 3, 4, 5, 6, 7, 8, 9, 10, 11, 12, 13, 14, 15, 16, 17, 18, 19, 20, 21, 22, 23, 24, 25, 26, 27, 28, 29, 30, 31, 32, 33, 34, 35, 36, 37, 38, 39, 40, 41, 42, 43, 44, 45, 46, 47, 48, 49, 50, 51, 52, 53, 54, 55, 56, 57, 58, 59, 60, 61, 62, 63

NOTE: EXISTING CONDITIONS MAY VARY FROM THIS PLAN DUE TO SANITARY SEWER AND WATER CONSTRUCTION BY THE CITY OF MERRILL ALONG BUS. 51.

STATE PROJECT NUMBER 9675-10-70 SHEET NO. 5.3
 PLAN AND PROFILE SHEET
 STA. 515+00 - STA. 521+00
 U.S.H. 51 LINCOLN COUNTY



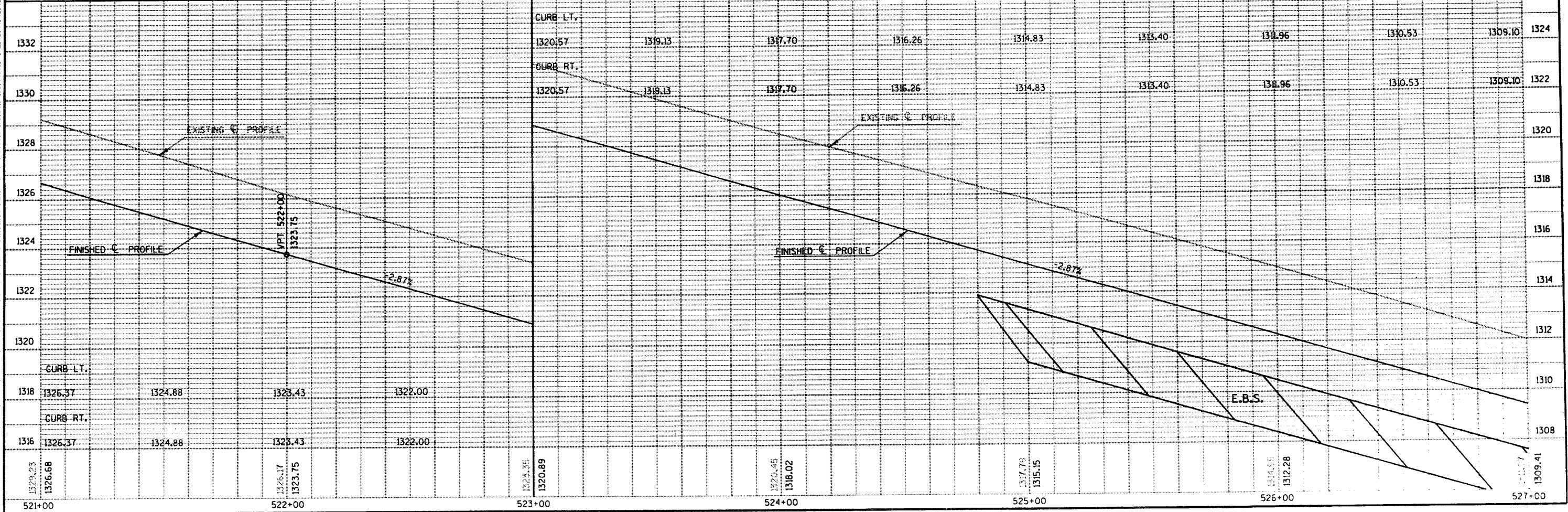
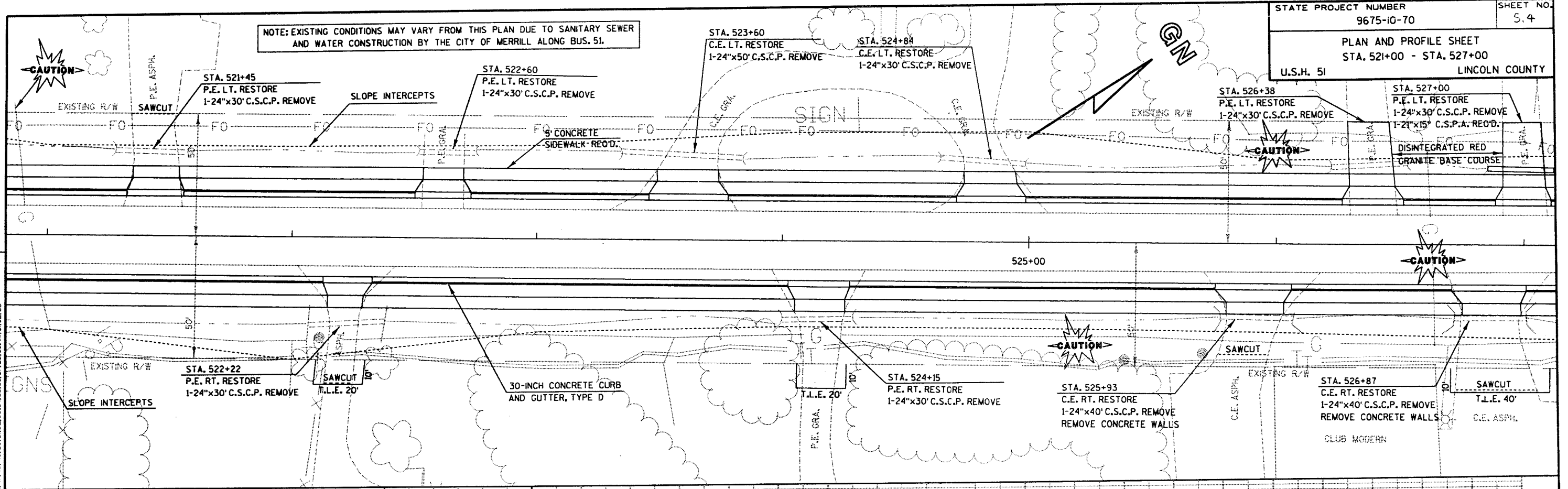
BENCH MARKS			
NO.	STATION	DESCRIPTION	ELEV.
3	518+25	8" POPPLE	1334.37
		40' LT.	1326.37

PLOT SCALE: 1" = 40'

PLOT NAME: 9675-10-70

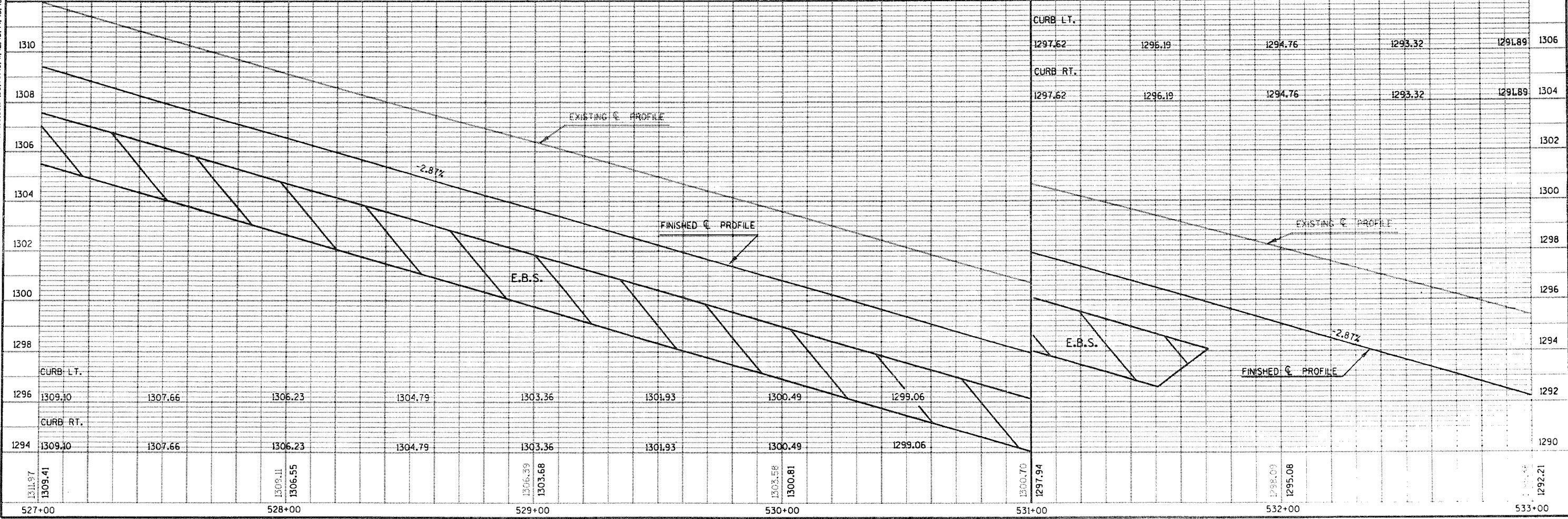
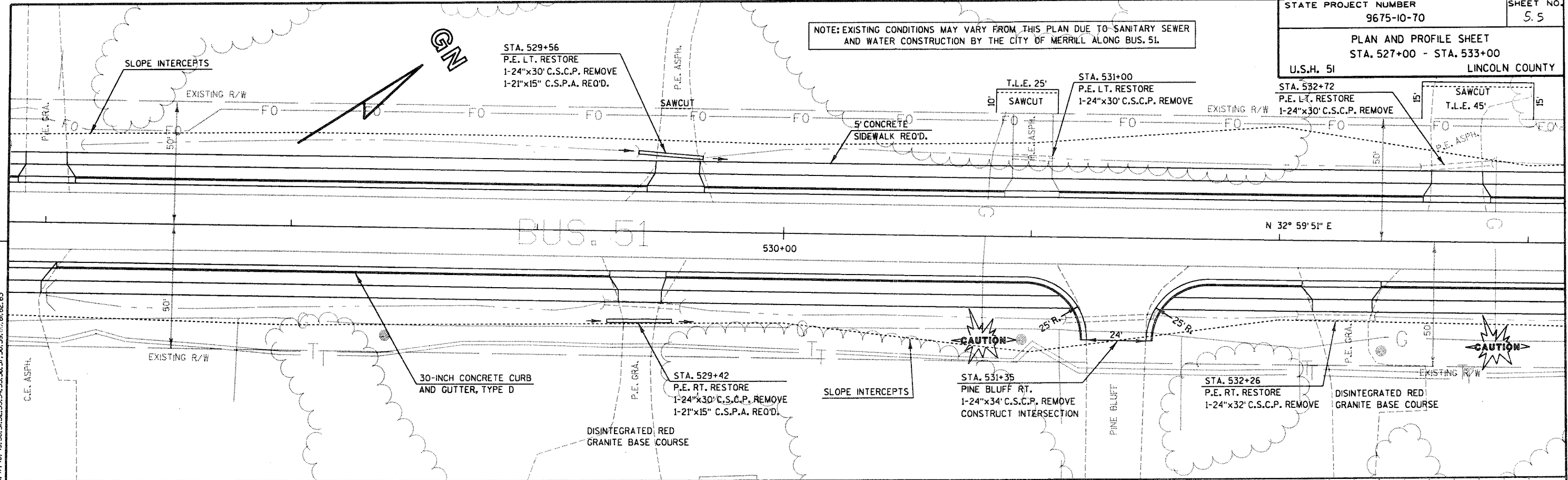
LEVELS ON: 1, 2, 3, 4, 5, 6, 7, 8, 9, 10, 11, 12, 13, 14, 15, 16, 17, 18, 19, 20, 21, 22, 23, 24, 25, 26, 27, 28, 29, 30, 31, 32, 33, 34, 35, 36, 37, 38, 39, 40, 41, 42, 43, 44, 45, 46, 47, 48, 49, 50, 51, 52, 53, 54, 55, 56, 57, 58, 59, 60, 61, 62, 63

NOTE: EXISTING CONDITIONS MAY VARY FROM THIS PLAN DUE TO SANITARY SEWER AND WATER CONSTRUCTION BY THE CITY OF MERRILL ALONG BUS. 51.

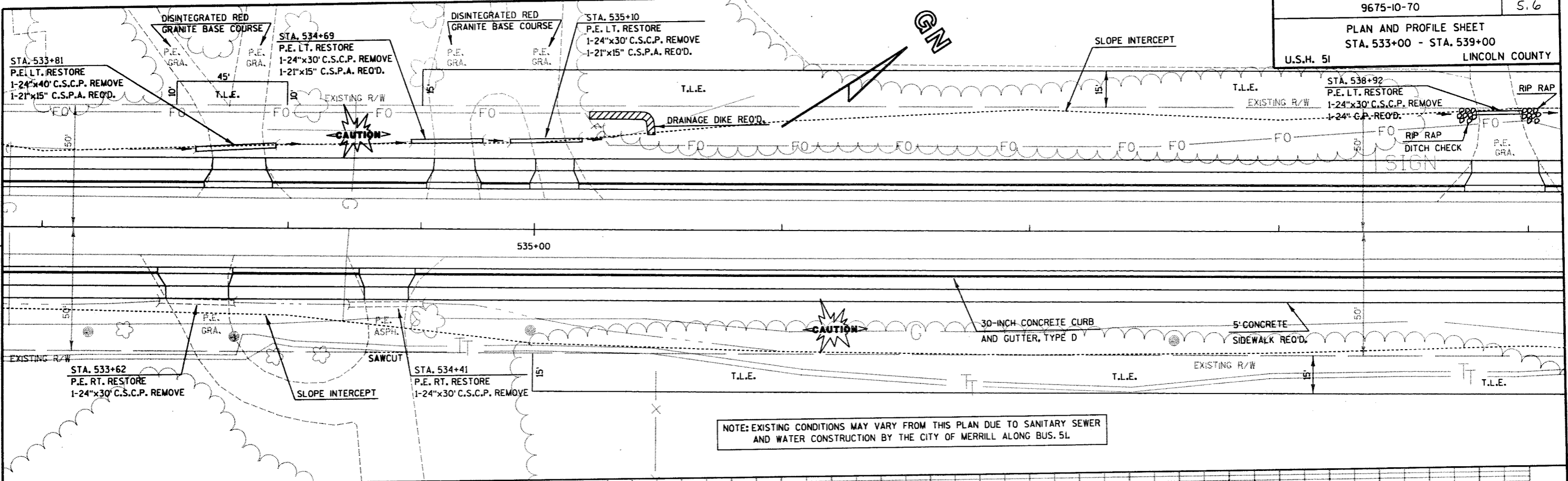


LEVELS ON - 1, 2, 3, 4, 5, 6, 7, 8, 9, 10, 11, 12, 13, 14, 15, 16, 17, 18, 19, 20, 21, 22, 23, 24, 25, 26, 27, 28, 29, 30, 31, 32, 33, 34, 35, 36, 37, 38, 39, 40, 41, 42, 43, 44, 45, 46, 47, 48, 49, 50, 51, 52, 53, 54, 55, 56, 57, 58, 59, 60, 61, 62, 63

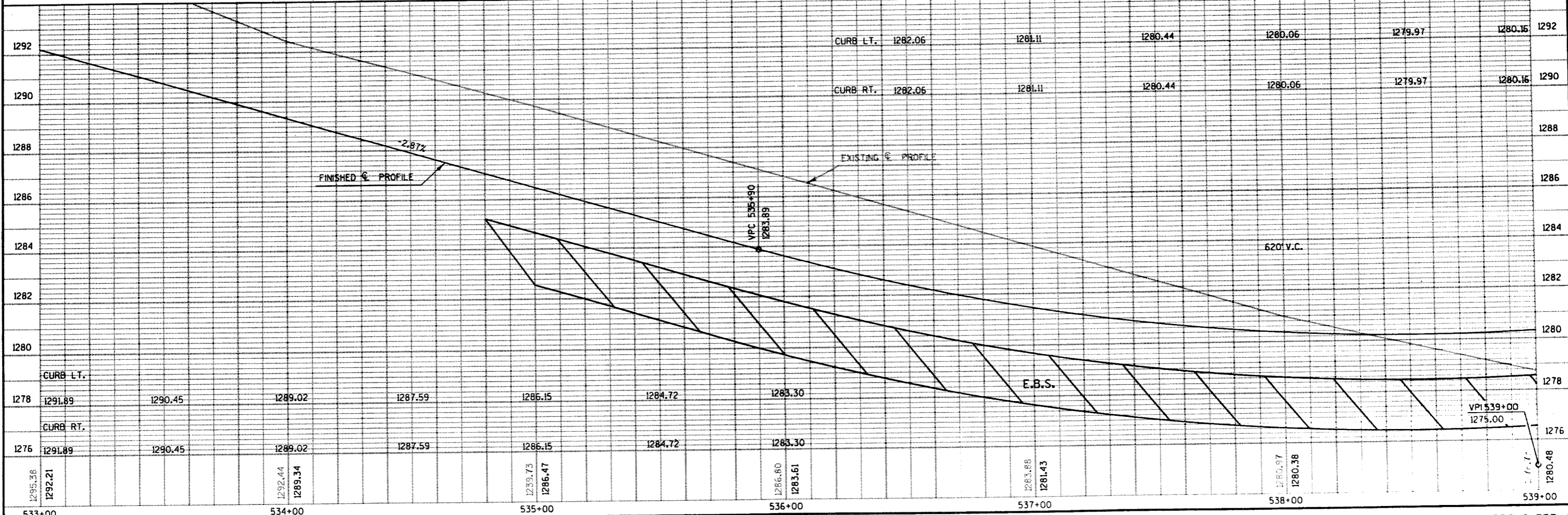
NOTE: EXISTING CONDITIONS MAY VARY FROM THIS PLAN DUE TO SANITARY SEWER AND WATER CONSTRUCTION BY THE CITY OF MERRILL ALONG BUS. 51.



LEVELS ON - 1, 2, 3, 4, 5, 6, 7, 8, 9, 10, 11, 12, 13, 14, 15, 16, 17, 18, 19, 20, 21, 22, 23, 24, 25, 26, 27, 28, 29, 30, 31, 32, 33, 34, 35, 36, 37, 38, 39, 40, 41, 42, 43, 44, 45, 46, 47, 48, 49, 50, 51, 52, 53, 54, 55, 56, 57, 58, 59, 60, 61, 62, 63



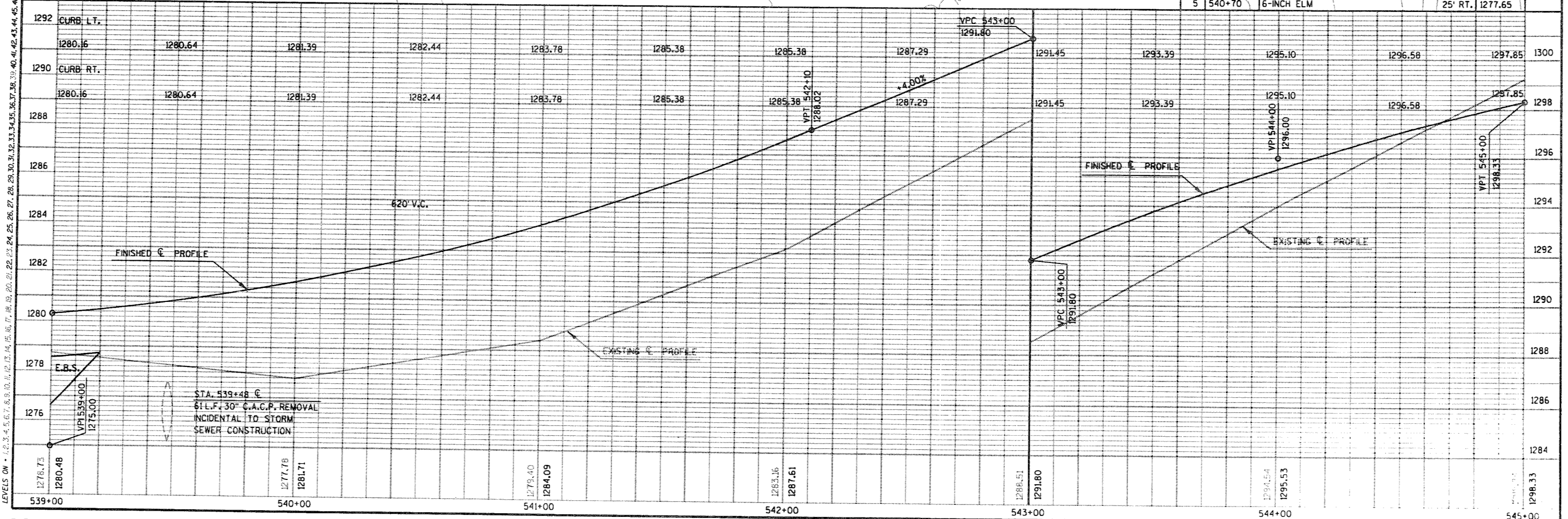
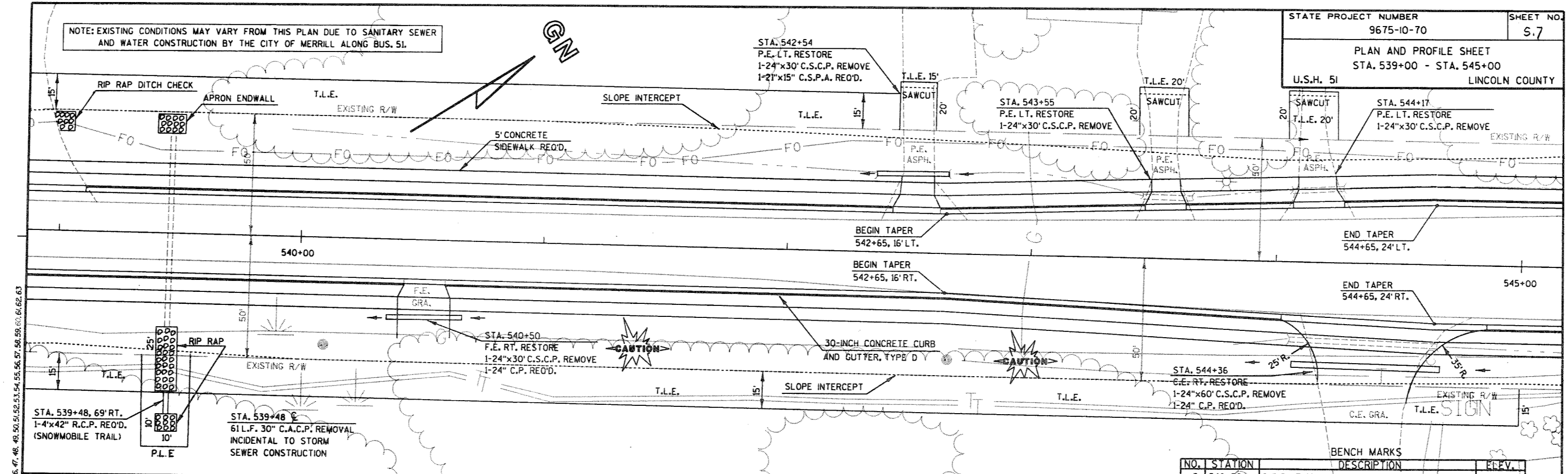
NOTE: EXISTING CONDITIONS MAY VARY FROM THIS PLAN DUE TO SANITARY SEWER AND WATER CONSTRUCTION BY THE CITY OF MERRILL ALONG BUS. 5L



LEVELS ON - 1, 2, 3, 4, 5, 6, 7, 8, 9, 10, 11, 12, 13, 14, 15, 16, 17, 18, 19, 20, 21, 22, 23, 24, 25, 26, 27, 28, 29, 30, 31, 32, 33, 34, 35, 36, 37, 38, 39, 40, 41, 42, 43, 44, 45, 46, 47, 48, 49, 50, 51, 52, 53, 54, 55, 56, 57, 58, 59, 60, 61, 62, 63

NOTE: EXISTING CONDITIONS MAY VARY FROM THIS PLAN DUE TO SANITARY SEWER AND WATER CONSTRUCTION BY THE CITY OF MERRILL ALONG BUS. ST.

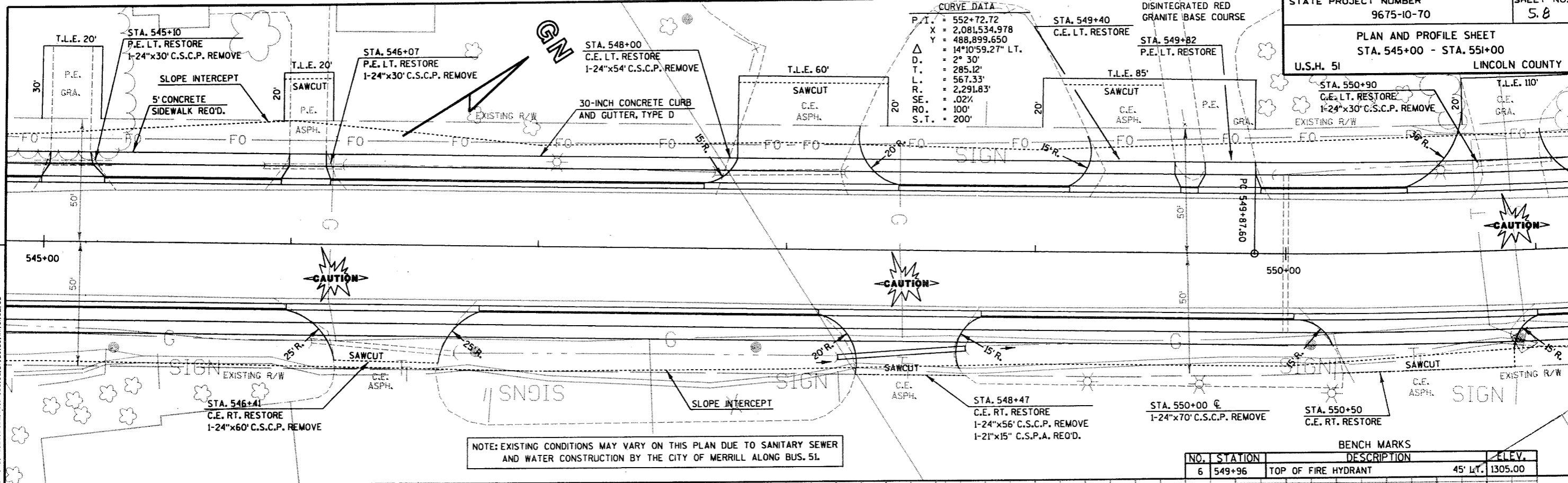
STATE PROJECT NUMBER
9675-10-70
SHEET NO.
5.7
PLAN AND PROFILE SHEET
STA. 539+00 - STA. 545+00
U.S.H. 51
LINCOLN COUNTY



STATE PROJECT NUMBER
9675-10-70
SHEET NO.
5.8
PLAN AND PROFILE SHEET
STA. 545+00 - STA. 551+00
U.S.H. 51 LINCOLN COUNTY

CURVE DATA

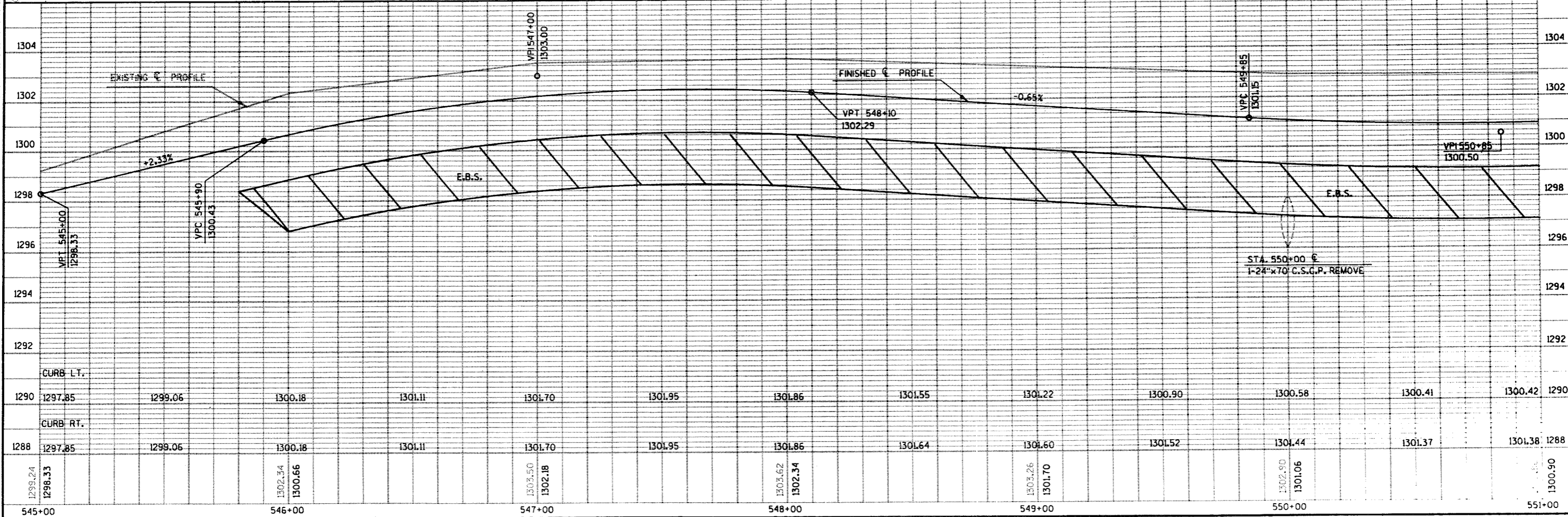
P.T.	= 552+72.72
X	= 2,081,534.978
Y	= 488,899.650
Δ	= 14°10'59.27" LT.
D.	= 2° 30'
L.	= 285.12'
R.	= 567.33'
SE.	= 0.02%
RO.	= 100'
S.T.	= 200'



NOTE: EXISTING CONDITIONS MAY VARY ON THIS PLAN DUE TO SANITARY SEWER AND WATER CONSTRUCTION BY THE CITY OF MERRILL ALONG BUS. 51.

BENCH MARKS

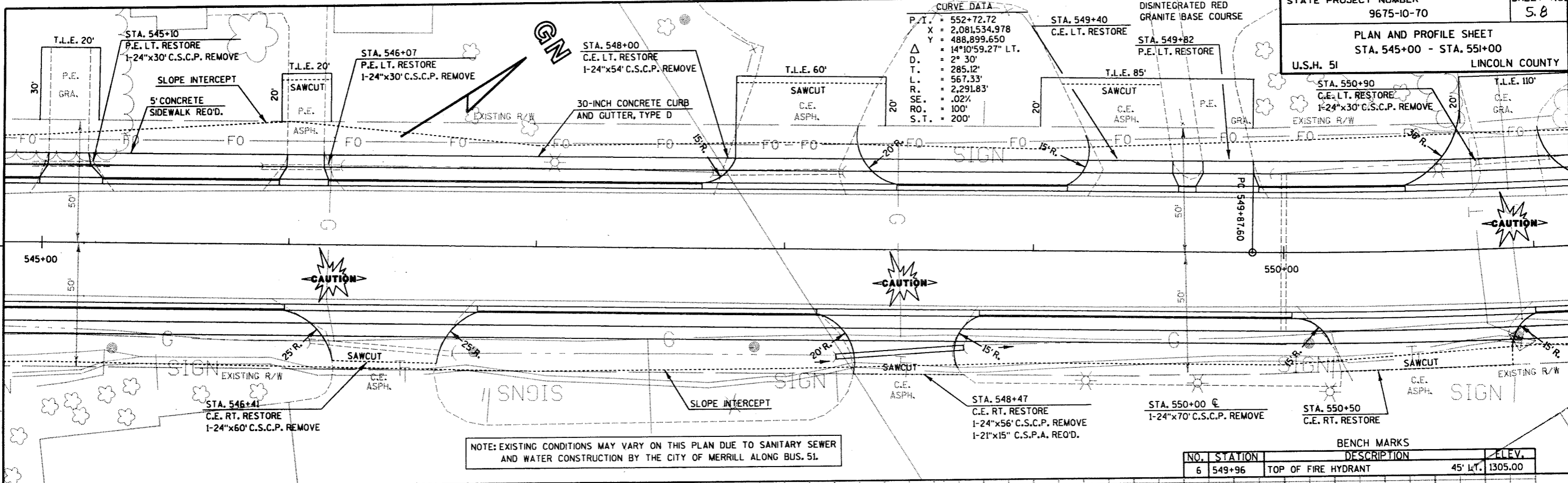
NO.	STATION	DESCRIPTION	ELEV.
6	549+96	TOP OF FIRE HYDRANT 45' LT.	1305.00



LEVELS ON - 1299.24, 1298.33, 1297.85, 1299.06, 1299.06, 1300.18, 1301.11, 1301.11, 1301.70, 1301.70, 1301.95, 1301.95, 1301.86, 1301.86, 1301.55, 1301.55, 1301.22, 1301.22, 1300.90, 1300.90, 1300.58, 1300.58, 1300.41, 1300.41, 1300.42, 1300.42, 1288, 1288, 1301.37, 1301.37, 1301.38, 1301.38, 1288, 1288, 1301.44, 1301.44, 1301.60, 1301.60, 1301.64, 1301.64, 1301.70, 1301.70, 1301.70, 1301.70, 1301.06, 1301.06, 1301.26, 1301.26, 1302.34, 1302.34, 1303.62, 1303.62, 1302.18, 1302.18, 1303.50, 1303.50, 1300.66, 1300.66, 1300.34, 1300.34, 1300.18, 1300.18, 1298.33, 1298.33, 1299.24, 1299.24

CURVE DATA

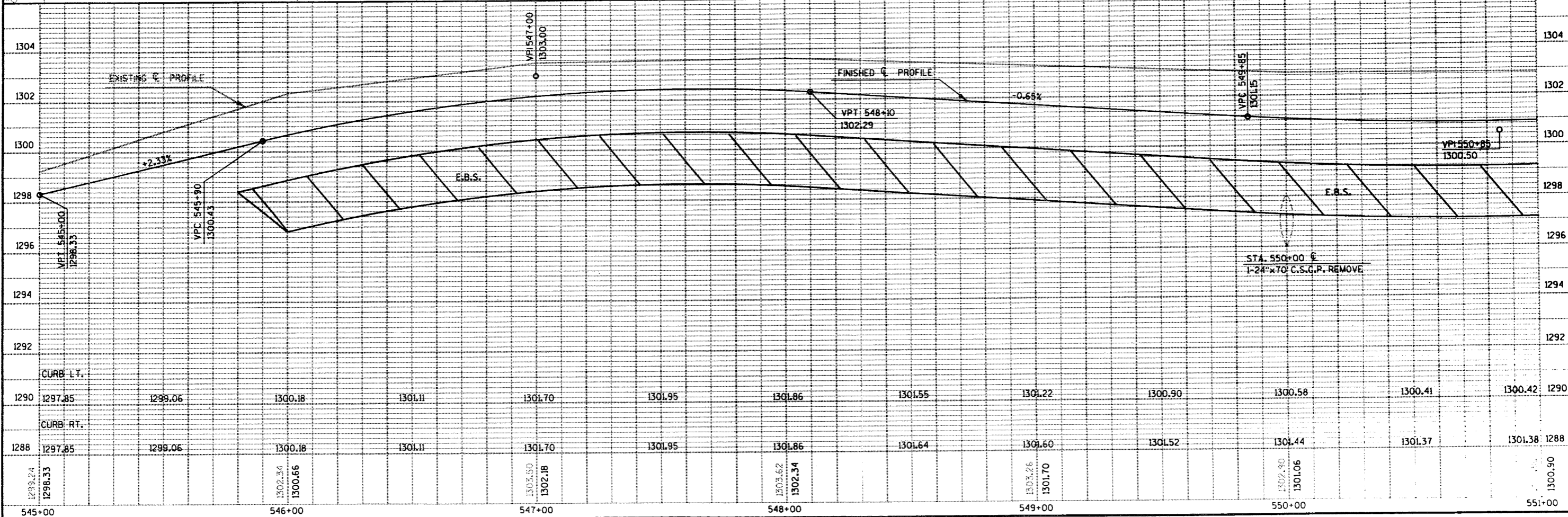
P.T.	= 552+72.72
X	= 2,081,534.978
Y	= 488,899.650
Δ	= 14°10'59.27" LT.
D.	= 2° 30'
T.	= 285.12'
L.	= 567.33'
R.	= 2,291.83'
SE.	= .02%
RO.	= 100'
S.T.	= 200'



NOTE: EXISTING CONDITIONS MAY VARY ON THIS PLAN DUE TO SANITARY SEWER AND WATER CONSTRUCTION BY THE CITY OF MERRILL ALONG BUS. 51.

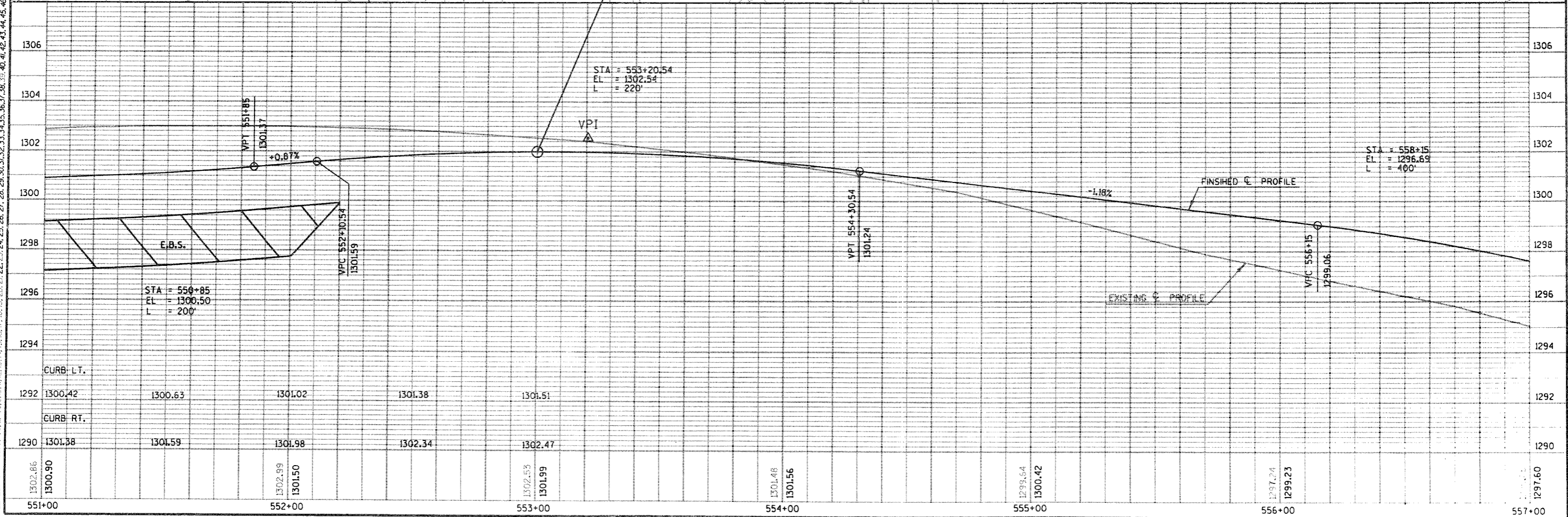
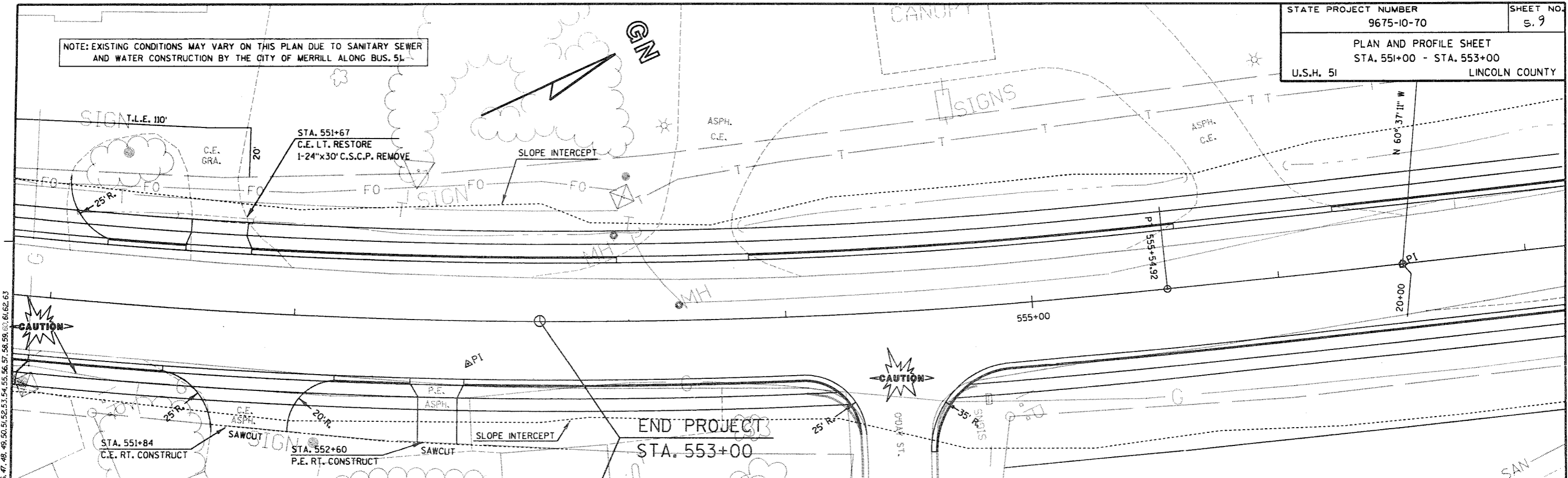
BENCH MARKS

NO.	STATION	DESCRIPTION	ELEV.
6	549+96	TOP OF FIRE HYDRANT	45' LT. 1305.00



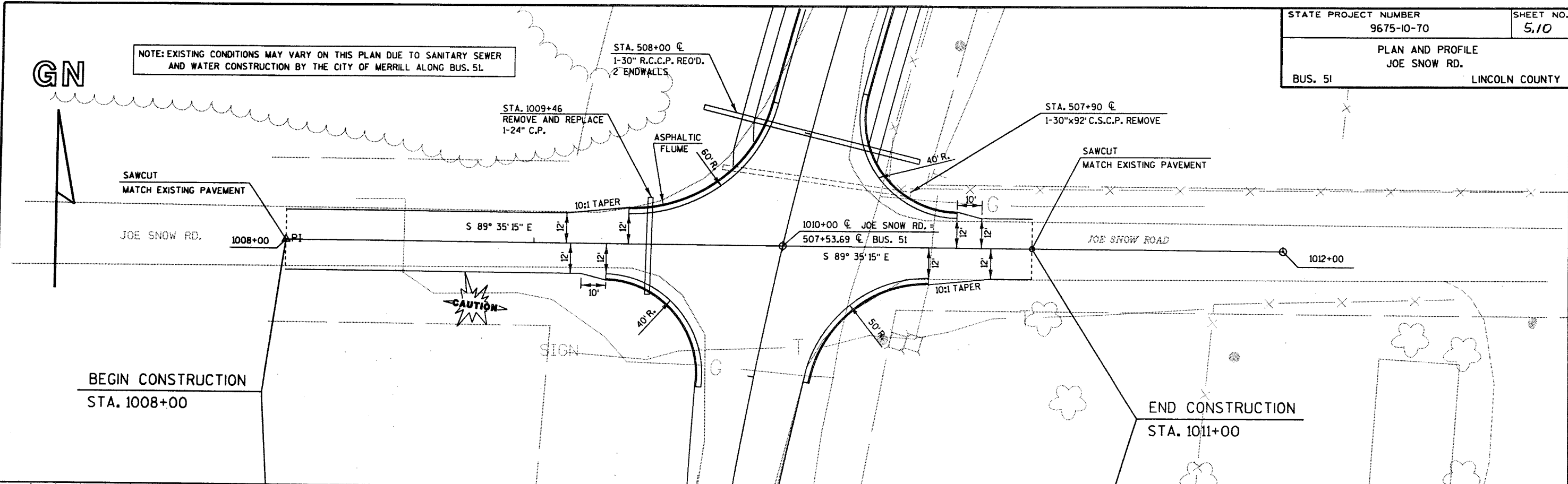
LEVELS ON = 1, 2, 3, 4, 5, 6, 7, 8, 9, 10, 11, 12, 13, 14, 15, 16, 17, 18, 19, 20, 21, 22, 23, 24, 25, 26, 27, 28, 29, 30, 31, 32, 33, 34, 35, 36, 37, 38, 39, 40, 41, 42, 43, 44, 45, 46, 47, 48, 49, 50, 51, 52, 53, 54, 55, 56, 57, 58, 59, 60, 61, 62, 63

NOTE: EXISTING CONDITIONS MAY VARY ON THIS PLAN DUE TO SANITARY SEWER AND WATER CONSTRUCTION BY THE CITY OF MERRILL ALONG BUS. 51



LEVELS ON - 1.23, 3.4, 5.6, 7.8, 10.0, 12.2, 14.4, 16.6, 18.8, 21.0, 23.2, 25.4, 27.6, 29.8, 32.0, 34.2, 36.4, 38.6, 40.8, 43.0, 45.2, 47.4, 49.6, 51.8, 54.0, 56.2, 58.4, 60.6, 62.8

NOTE: EXISTING CONDITIONS MAY VARY ON THIS PLAN DUE TO SANITARY SEWER AND WATER CONSTRUCTION BY THE CITY OF MERRILL ALONG BUS. 51



LEVELS ON - 1.0, 2.0, 3.0, 4.0, 5.0, 6.0, 7.0, 8.0, 9.0, 10.0, 11.0, 12.0, 13.0, 14.0, 15.0, 16.0, 17.0, 18.0, 19.0, 20.0, 21.0, 22.0, 23.0, 24.0, 25.0, 26.0, 27.0, 28.0, 29.0, 30.0, 31.0, 32.0, 33.0, 34.0, 35.0, 36.0, 37.0, 38.0, 39.0, 40.0, 41.0, 42.0, 43.0, 44.0, 45.0, 46.0, 47.0, 48.0, 49.0, 50.0, 51.0, 52.0, 53.0, 54.0, 55.0, 56.0, 57.0, 58.0, 59.0, 60.0, 61.0, 62.0, 63.0

