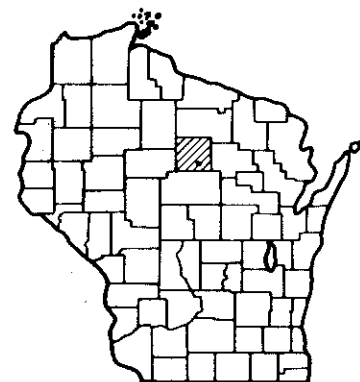


10

**Index of Sheets**

Sheet No.	Title
1	1
2-2.8	Typical Cross Sections
3	Estimate of Quantities
3A	Miscellaneous Quantities
-	Right of Way Plat
5-5.3	Plan and Profile
6-6.7	Standard Details
-	Structure Plans
-	Computer Earthwork Data
8-8.11	Cross Sections

TOTAL SHEETS = 36



(EAST MAIN STREET)  
LOCAL STREET

STATE PROJECT NUMBER  
**9994-02-70**

**Design Designation**

A.D.T. 1978	=	7,525
A.D.T. 1998	=	10,275
D.H.V. 199E	=	1,230
D.	=	60-40
T.	=	8.2%
V.	=	30 M.P.H.

**Conventional Signs**

County Line	-----
Township or Range Line	-----
Section Line	-----
New Right of Way Line	-----
Present Right of Way Line	-----
Wire Fence	(type) x
Corporate or City Limits	-----
Property Line	P.L.
Traveled Way or P.E.	-----
Railroads	-----
Base or Survey Line	-----
Caution Symbol (combustible fluids under pressure)	

Culverts in Place	-----
Culverts Required	-----
Drop Inlet	-----
Power Pole	-----
Telephone or Telegraph Pole	-----
Right of Way Markers	-----
Reference Stake for Hubs Only	+51.7 -25.9
Marsh	-----
Hedge	-----
Trees	-----
Ground Elevation	Datum Line 73.8
Grade Elevation	Datum Line 10.0

STATE OF WISCONSIN  
**DEPARTMENT OF TRANSPORTATION**  
**DIVISION OF HIGHWAYS**

PLAN AND PROFILE OF PROPOSED

**BUS. USH 51-E.C.P.L.**

**CITY OF MERRILL**  
**LINCOLN COUNTY**

S.T.H. 64

STATE PROJECT NUMBER  
**9016-02-70**

Scales  
Plan 1 in = 20 ft  
Profile Hor 1 in = 20 ft. Vert 1 in = 10 ft.  
Cross Sections Hor. 1 in = 5 ft. Vert 1 in = 2 ft.

EXCEPTION TO NET  $\bar{C}$  LENGTH  
STA. 11'S'+84 TO 12'S'+52.4

END OF PROJECT 9016-02-70  
STA. 21+91.0

N = 491,430 ( $\pm 200'$ )  
E = 2,082,928 ( $\pm 200'$ )  
 $\pm 1060'$  N. & 1,158' E. OF S 1/4 COR.  
SEC. 12, T 31 N, R 6 E

BEGINNING OF PROJECT 9016-02-70  
STA. 5 'F' + 23.0

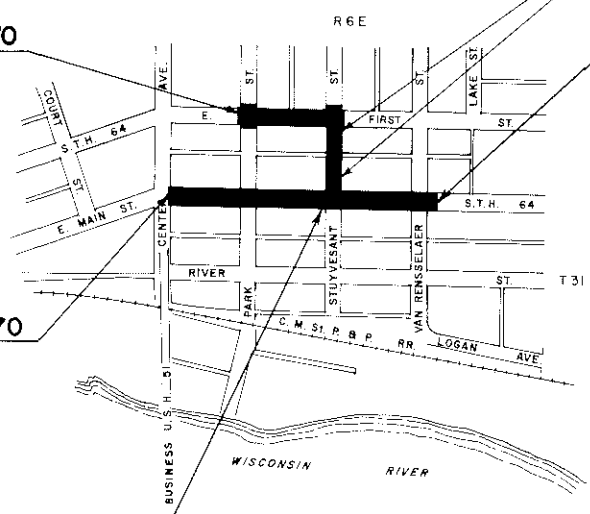
N = 491,770 ( $\pm 200'$ )  
E = 2,082,100 ( $\pm 200'$ )  
 $\pm 1,410'$  N. & 325' E. OF S 1/4 COR.  
SEC. 12, T 31 N, R 6 E

BEGINNING OF PROJECT 9994-02-70  
STA. 10 + 33.0

N = 491,430 ( $\pm 200'$ )  
E = 2,081,770 ( $\pm 200'$ )  
 $\pm 1,070'$  NORTH OF S 1/4 COR.  
SEC. 12, T 31 N, R 6 E

END OF PROJECT 9994-02-70  
STA. 16+98.4

N = 491,430 ( $\pm 200'$ )  
E = 2,082,435 ( $\pm 200'$ )  
 $\pm 1070'$  N. & 665' E. 1/4 COR.  
SEC. 12, T 31 N, R 6 E



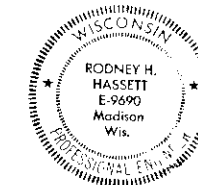
**Layout**

Scale 0 200 400 Ft.

Total Net Length of Centerline = Project 9994-02-70 = 0.127 Mi. URBAN  
Project 9016-02-70 = 0.209 Mi. URBAN

COORDINATES ARE SCALED FROM U.S.G.S. TOPOGRAPHIC  
MAP, MERRILL QUADRANGLE FOR IDENTIFICATION ONLY  
AND ARE REFERENCED TO THE WISCONSIN COORDINATE  
SYSTEM CENTRAL ZONE.

STATE PROJECT	FEDERAL PROJECT	
	PROJECT	CONTRACT
9994-02-70	TQM502(001)	I
9016-02-70	F036 (7)	I



ORIGINAL  
PLANS PREPARED BY  
STRAND ASSOCIATES, INC.  
MADISON, WISCONSIN

1-13-77 *R.H. Hassett*  
Date Signature

APPROVED FOR THE  
CITY OF MERRILL

1-18-77 *Ralph F. Voigt*  
Date Mayor

STATE OF WISCONSIN  
DEPARTMENT OF TRANSPORTATION  
DIVISION OF HIGHWAYS

Surveyor STRAND ASSOC. District Checker E.S.A.  
Designer STRAND ASSOC. C. O. Checker *R.H.*  
District Supervisor P.M.J. C. O. Monitor *H.A.B.*

Approved:  
Date 1/19/78 *R.D. Schindler*  
District Engineer

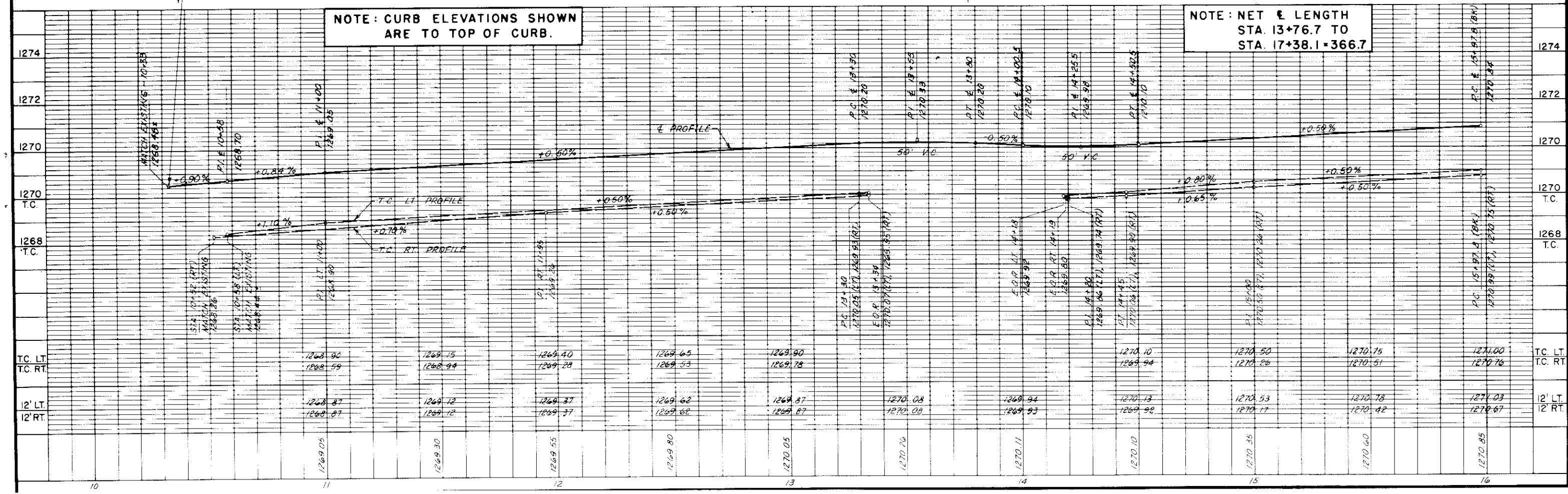
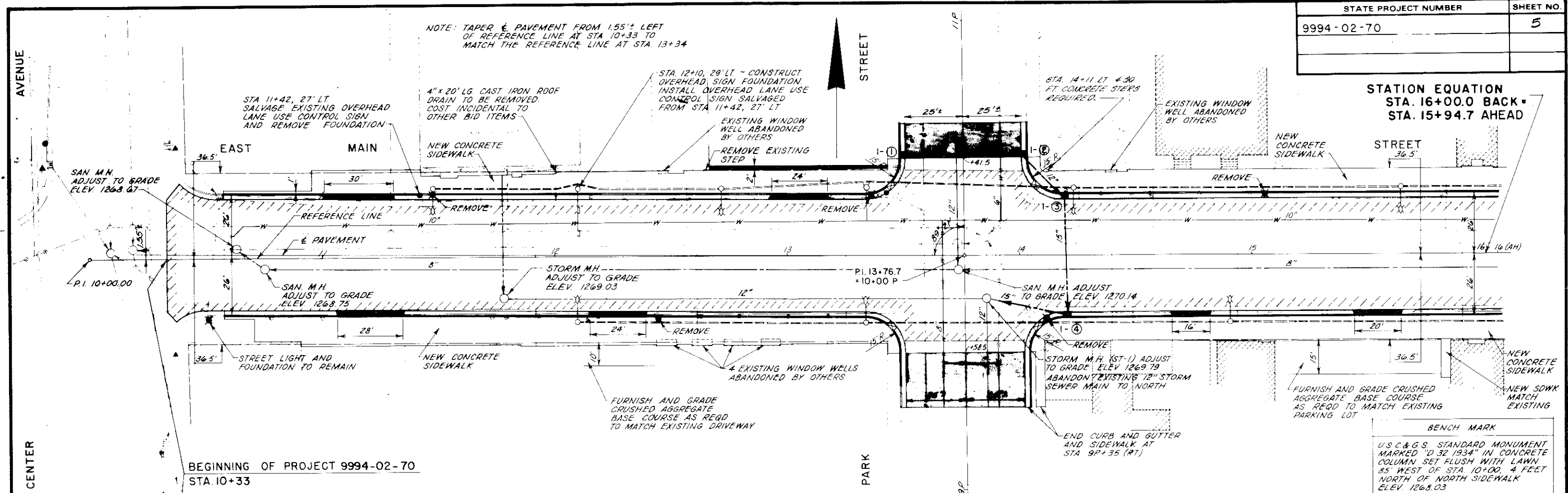
Approved:  
Date 4-14-78 *H.S. King*  
City Traffic Engineer

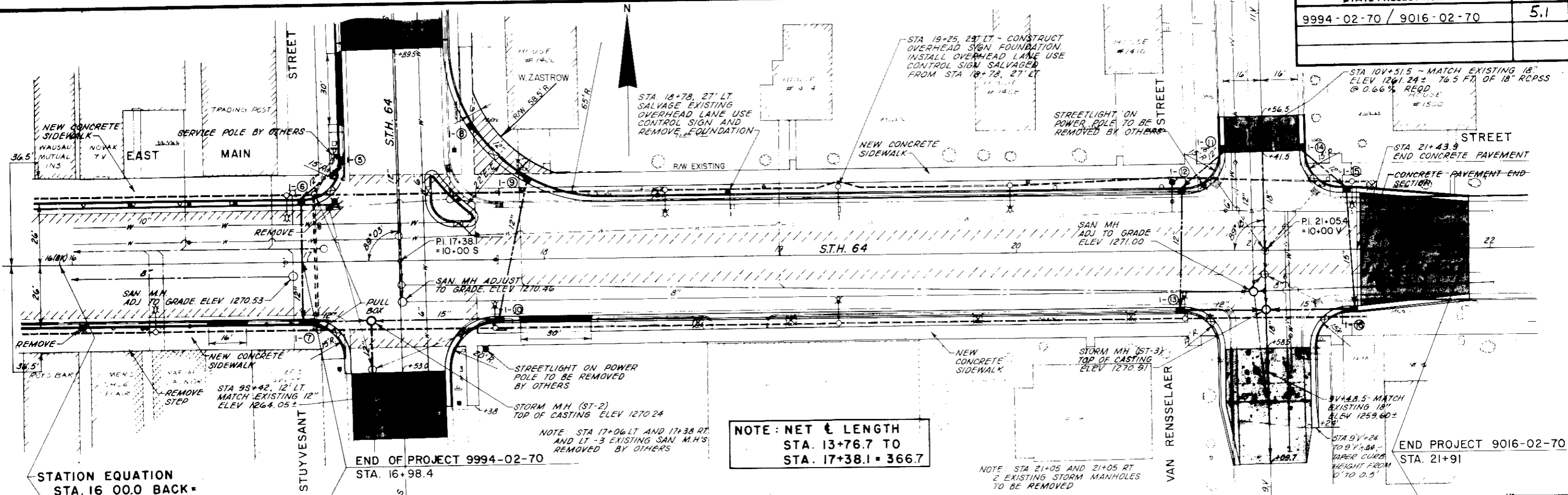
Approved:  
Date 4-18-78 *D.D. Strand*  
City of Merrill Development

Approved:  
Date 4/19/78 *H.L. Niedler*  
State Highway Engineer

U.S. DEPARTMENT OF TRANSPORTATION  
FEDERAL HIGHWAY ADMINISTRATION  
REGION 5 WISCONSIN DIVISION

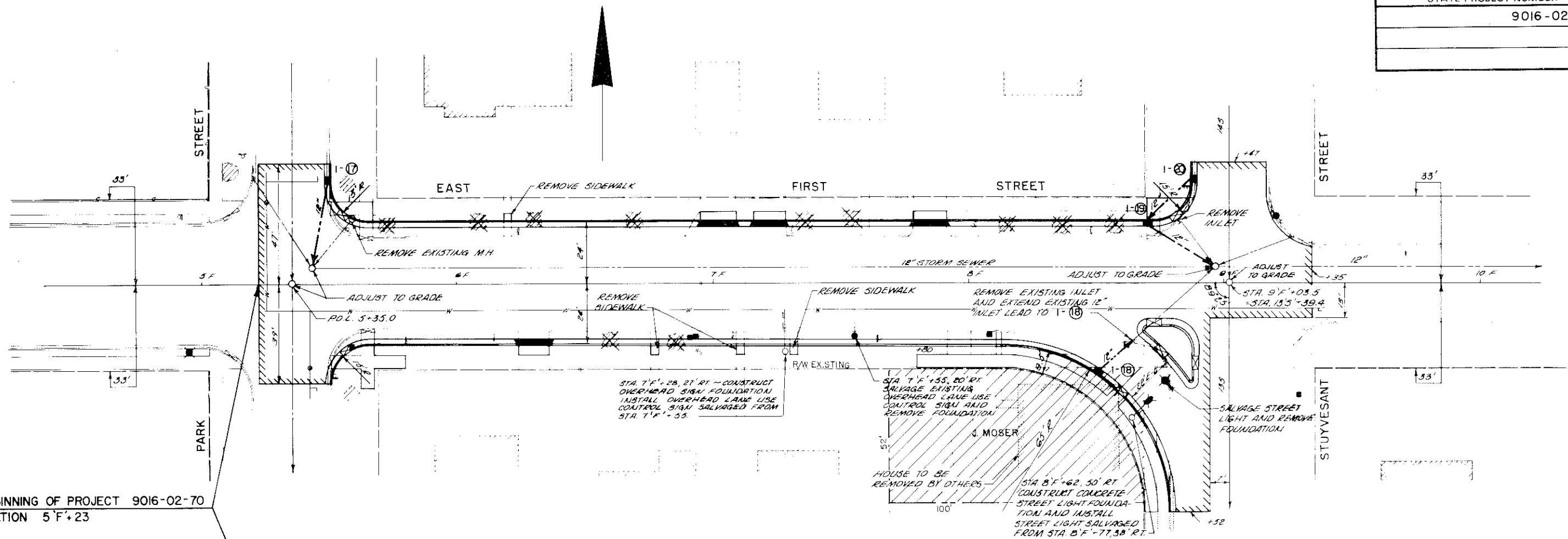
Approved:  
Date \_\_\_\_\_  
District Engineer



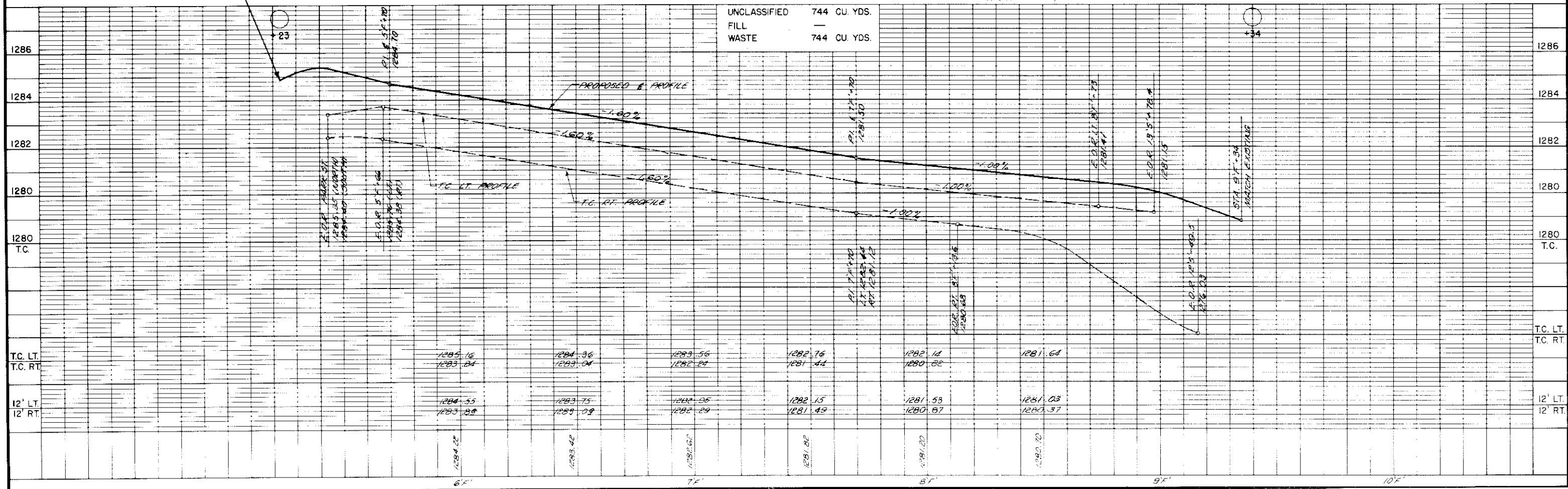


Station	12' LT	12' RT	T.C. LT	T.C. RT	Profile	Elevation
16.00	1270.08	1270.69	1271.02	1270.70	+0.50%	1270.08
16.50	1270.98	1270.62	1270.98	1270.71		1270.98
17.00	1270.79	1270.43	1270.76	1270.52	+0.50%	1270.76
17.50	1270.98	1270.62	1270.98	1270.71		1270.98
18.00	1271.23	1270.87	1271.45	1271.21	+0.50%	1271.23
18.50	1271.48	1271.12	1271.70	1271.46		1271.48
19.00	1271.73	1271.37	1271.90	1271.66	+0.50%	1271.73
19.50	1271.89	1271.53	1271.86	1271.62		1271.89
20.00	1271.68	1271.32	1271.65	1271.41	+0.50%	1271.68
20.50	1271.43	1271.07	1271.40	1271.16		1271.43
21.00	1271.48	1271.12	1271.70	1271.48	+0.66%	1271.48
21.50	1271.12	1270.76	1271.34	1271.00		1271.12

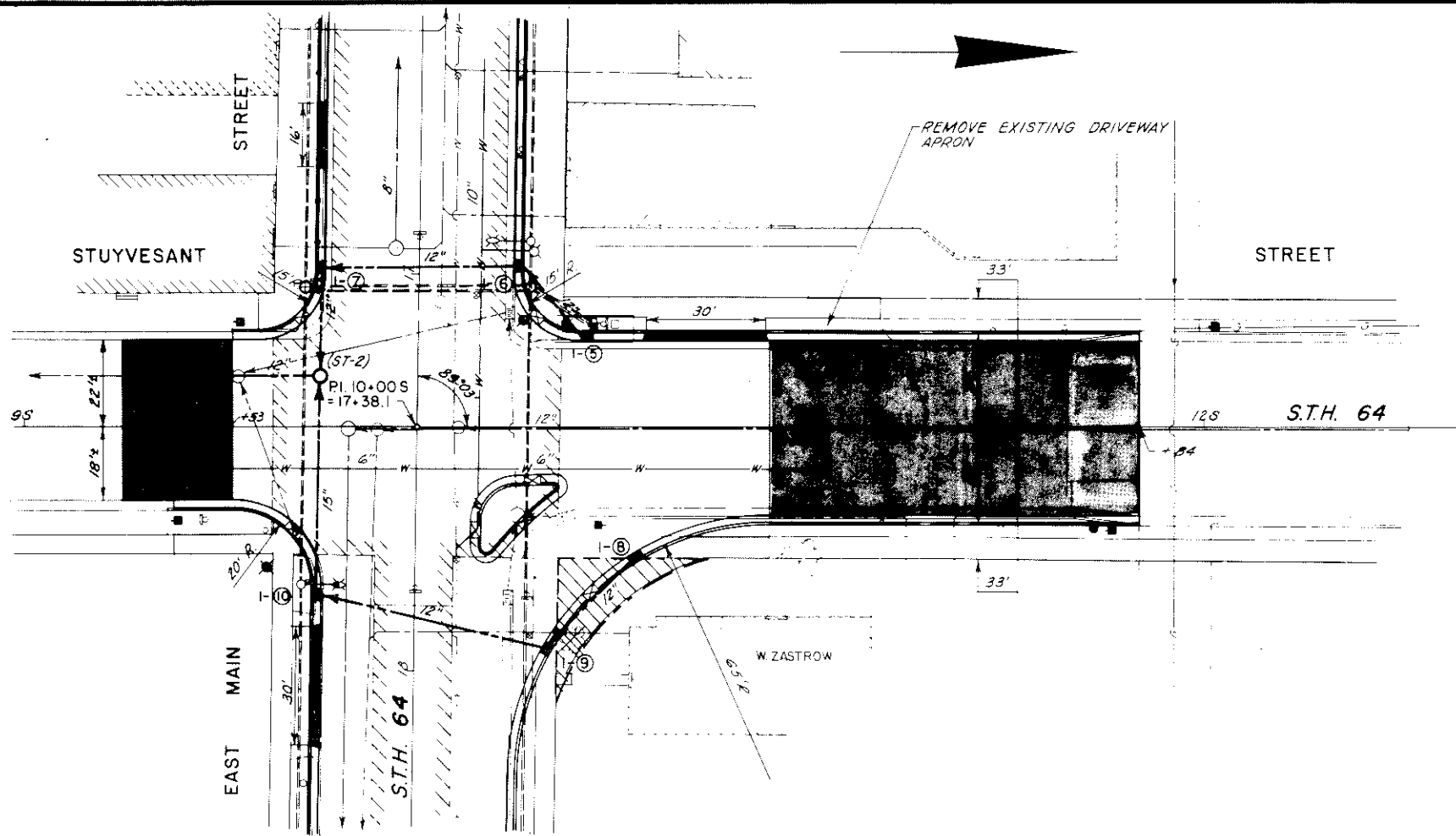
STATE PROJECT NUMBER	SHEET NO.
9016-02-70	5.2



BEGINNING OF PROJECT 9016-02-70  
STATION 5 F + 23



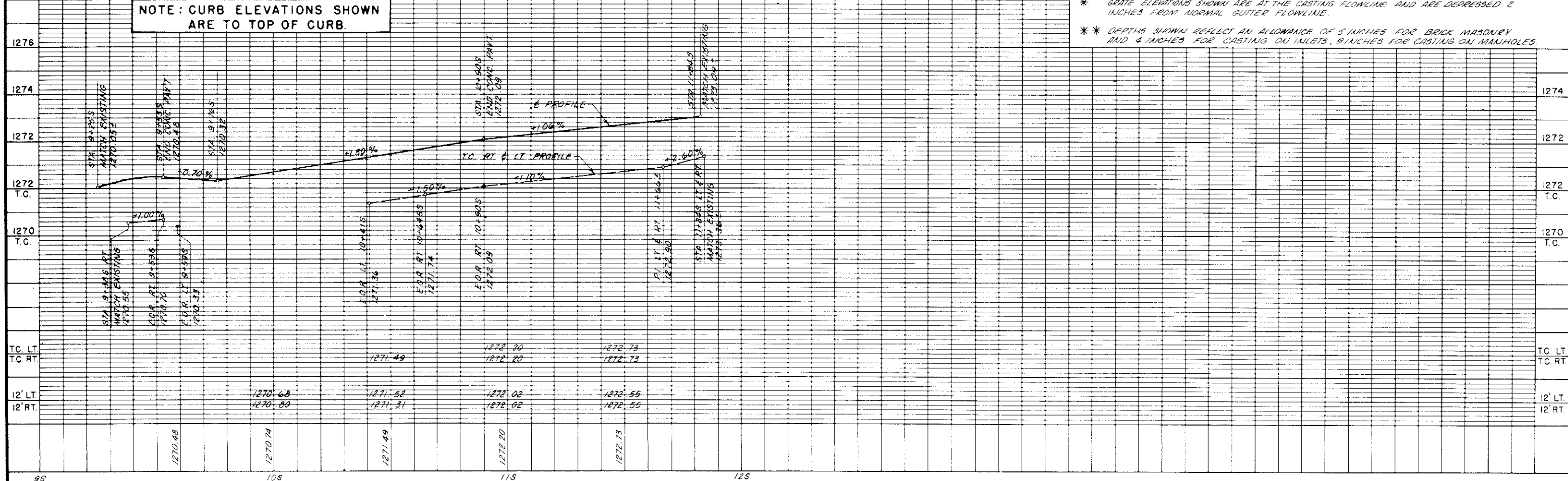
TC. LT.	1285.16	1284.36	1283.56	1282.76	1281.14	1281.64	
TC. RT.	1283.84	1283.04	1282.24	1281.44	1280.82		
12' LT.	1284.55	1283.75	1282.95	1282.15	1281.53	1281.03	
12' RT.	1283.23	1282.43	1281.63	1280.83	1280.21	1280.71	



DRAINAGE TABLE

INLETS AND MANHOLES					DISCHARGE PIPES			
NO.	LOCATION	GRATE ELEV.	TYPE	DIS. ELEV.	DEPTH	SIZE	LENGTH	SLOPE
<b>PARK STREET</b>								
1-1	10+43P, 26' LT.	1269.92	3-H	1266.59	2.58'	12"	52'	0.50%
1-2	10+43P, 26' RT.	1269.68	3-H	1266.20	2.73'	12"	24'	0.50%
1-3	14+20M, 25' LT.	1269.25	3-H	1265.80	2.70'	15"	50'	0.40%
1-4	14+20M, 25' RT.	1269.13	3-H	1265.40	2.08'	15"	32'	0.50%
ST-1	13+86M, 18' RT.	1270.14		1263.33±		12"	EXISTING	1.90%±
<b>STUYVESANT ST.</b>								
1-5	10+43S, 23' LT.	1270.69	3-H	1267.36	2.58'	12"	23'	0.50%
1-6	16+98M, 25' LT.	1270.10	3-H	1266.77	2.51'	12"	50'	0.50%
1-7	16+98M, 25' RT.	1269.86	3-H	1266.20	2.91'	12"	24'	0.50%
1-8	10+55S, 33' RT.	1270.88	3-H	1267.55	2.58'	12"	30'	0.50%
1-9	17+93.5M, 33.5' LT.	1270.41	3-H	1267.08	2.58'	12"	58'	0.60%
1-10	17+81M, 25' RT.	1270.19	3-H	1266.50	2.94'	15"	52'	0.40%
ST-2	17+26M, 25' RT.	1270.24	1-J	1265.10	3.97'	12"	32'	3.30%±
<b>VAN RENSSELAER</b>								
1-11	10+43V, 17' LT.	1270.83	3-H	1267.50	2.58'	12"	23'	0.50%
1-12	20+70M, 25' LT.	1270.70	3-H	1265.73	4.22'	12"	50'	0.50%
1-13	20+70M, 25' RT.	1270.46	3-H	1263.48	6.23'	12"	32'	4.00%
1-14	10+43V, 17' RT.	1270.83	3-H	1267.50	2.58'	12"	23'	0.50%
1-15	21+39M, 25' LT.	1270.97	3-H	1265.40	4.82'	15"	50'	0.40%
1-16	21+42M, 25' RT.	1270.73	3-H	1263.40	2.58'	15"	30'	4.00%
ST-3	21+05M, 25' RT.	1270.91	1-J	1260.25	9.50'	18"	26'	2.50%
<b>EAST FIRST ST.</b>								
1-17	5F+50, 40' LT.	1284.68	3-H	1281.56	2.37'	12"	32'	0.50%
1-18	8F+50, 34' RT.	1279.23	3-H	1275.64	2.84'	12"	28'	0.50%
1-19	8F+69, 23' LT.	1280.80	3-H	1276.14	3.91'	12"	28'	0.50%
1-20	8F+89, 40' LT.	1280.48	3-H	1276.25	3.48'	12"	22'	0.50%

NOTE: CURB ELEVATIONS SHOWN ARE TO TOP OF CURB.



\* GRATE ELEVATIONS SHOWN ARE AT THE CASTING FLOWLINE AND ARE DEPRESSED 2 INCHES FROM NORMAL GUTTER FLOWLINE.  
 \*\* DEPTHS SHOWN REFLECT AN ALLOWANCE OF 5 INCHES FOR BRICK MASONRY AND 4 INCHES FOR CASTING ON INLETS, 9 INCHES FOR CASTING ON MANHOLES.