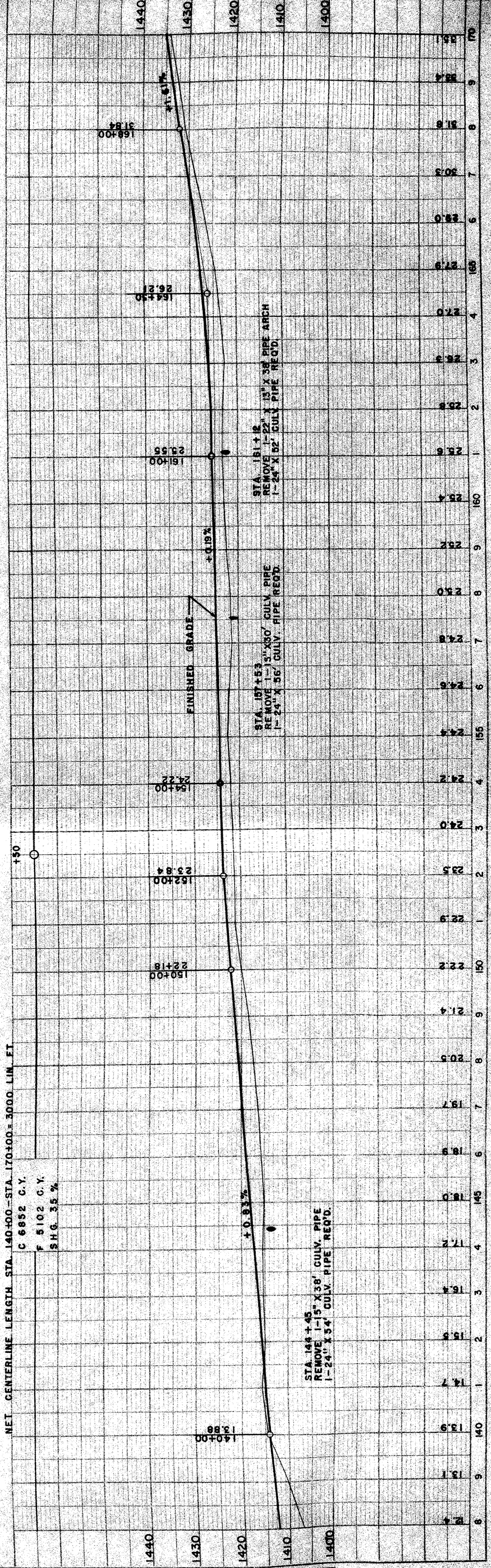
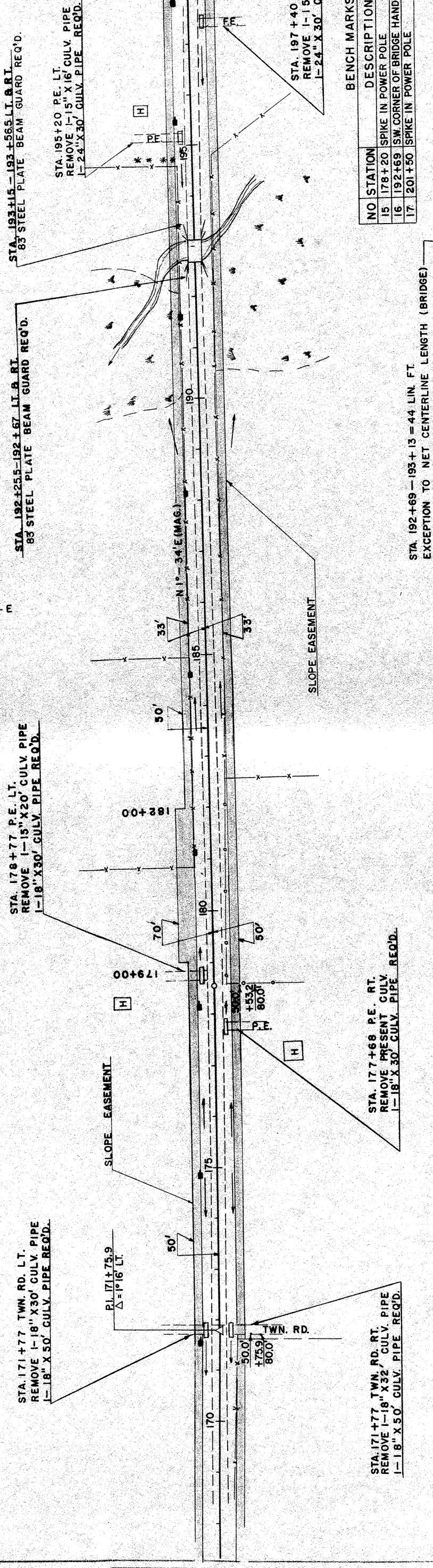
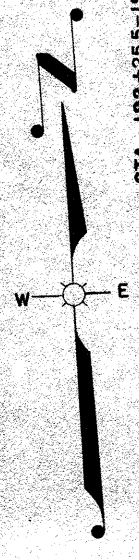


NO. STATION	DESCRIPTION	ELEV.
12	141+55 SPIKE IN 8" POPLAR	60' LT 1415.83
13	150+15 SPIKE IN 12" POPLAR	40' LT 1420.29
14	166+40 SPIKE IN 12" POPLAR	45' RT 1428.05



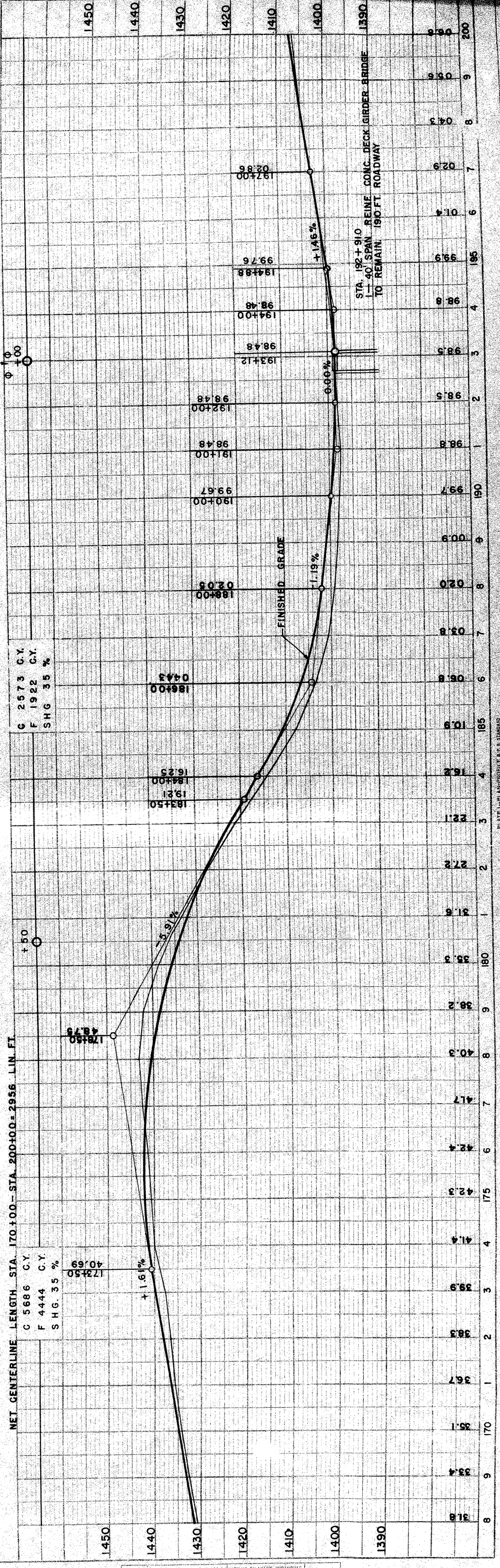
DATE: 3-58
 DRAWN BY: B.L.S.
 CHECKED BY: [Signature]
 APPROVED BY: [Signature]
 NO. OF WAYS CHECKED: [Blank]
 BM: [Blank]

DATE: 2-58
 DRAWN BY: P.L.R. D.L.J.
 CHECKED BY: [Signature]
 APPROVED BY: [Signature]
 NO. OF WAYS CHECKED: [Blank]
 BM: [Blank]



BENCH MARKS

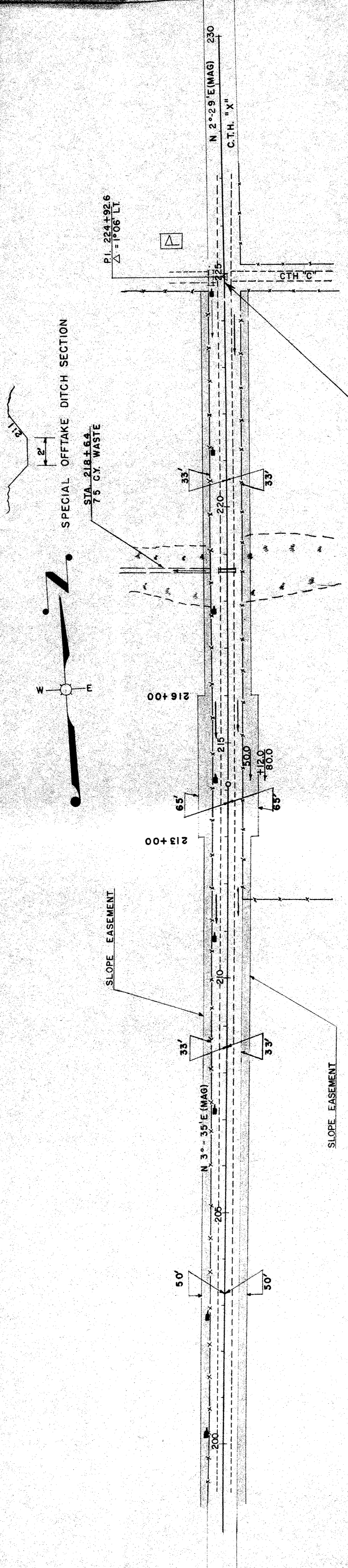
NO	STATION	DESCRIPTION	ELEV
15	178+20	SPIKE IN POWER POLE	115' RT. 1442.62
16	192+69	SW CORNER OF BRIDGE HAND RAIL	1402.22
17	201+50	SPIKE IN POWER POLE	55' LT. 1408.79



DATE 9-58
 BY D.C.S.
 CHECKED BY R.H. D.L.L.
 IN CHARGE BY R.H. D.L.L.

DATE 9-58
 BY D.C.S.
 CHECKED BY R.H. D.L.L.
 IN CHARGE BY R.H. D.L.L.

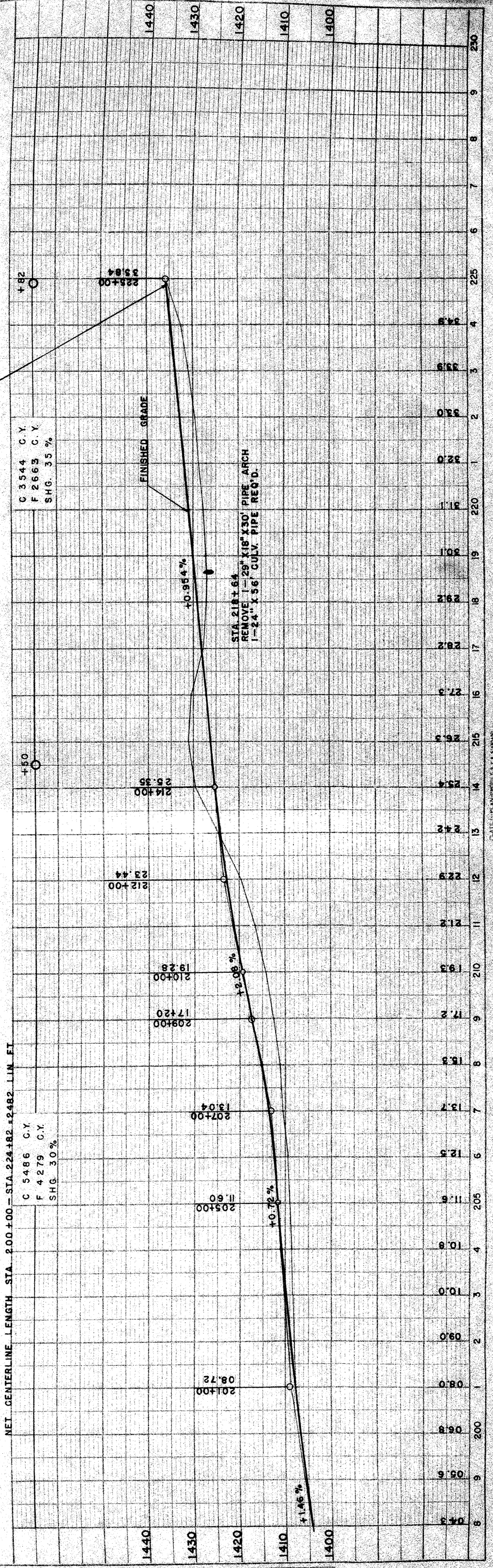
PROJECT NUMBER	S0570(7)
DATE	44



NO. STATION DESCRIPTION ELEV.

17	201+50	SPIKE IN 10" POPLAR	55 LT.	1408.79
18	214+00	SPIKE IN 10" POPLAR	125 LT.	1430.94
19	221+15	SPIKE IN 8" POPLAR	45 LT.	1430.12

STA. 224+82 END OF PROJ. S0570 (7)



NET CENTERLINE LENGTH STA. 200+00 - STA. 224+82 ± 2482 LIN. FT.

C	5486 C.Y.
F	4279 C.Y.
SHG.	30%

C	3544 C.Y.
F	2663 C.Y.
SHG.	35%

PLAN

DATE	2-58
BY	P.L.H.
CHECKED	D.L.J.
APPROVED	
NO. IBM	
NOTE BOOK	
PLOTTED	
ALIGNED	
REF. OF V.M. CHECKED	

PROFILE

DATE	2-58
BY	D.C.S.
CHECKED	P.L.H. & D.L.J.
APPROVED	
NO. IBM	
NOTE BOOK	
PLOTTED	
ALIGNED	
REF. OF V.M. CHECKED	