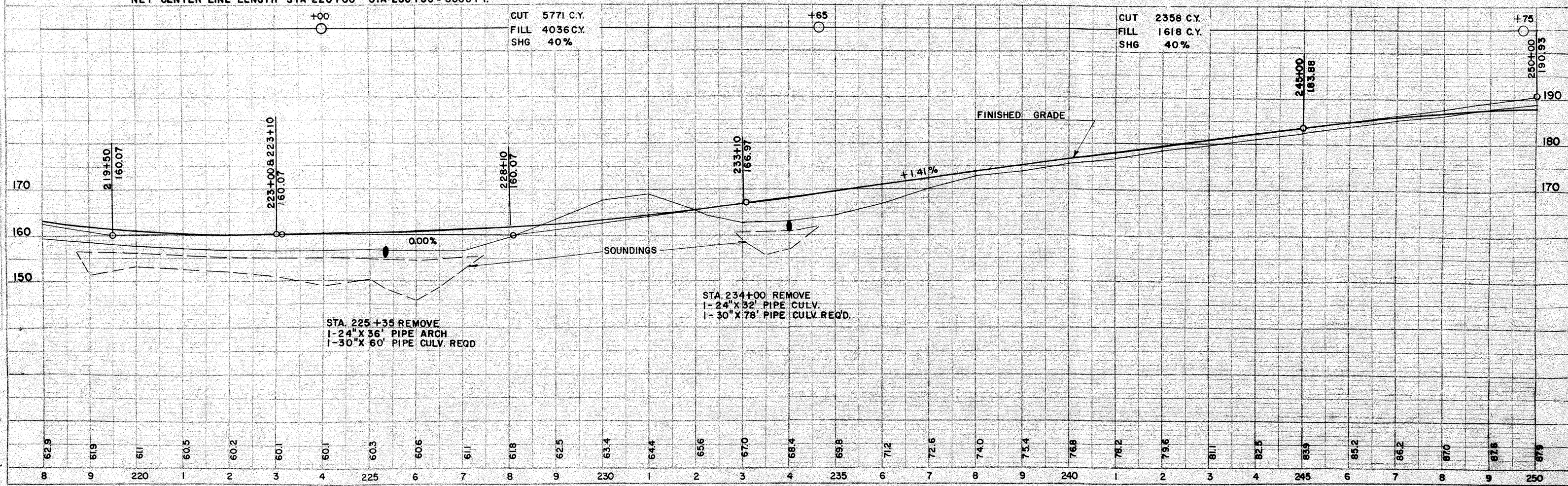


BENCH MARKS

NO.	STATION	DESCRIPTION	ELEV.
74	227+90	SPIKE IN 6" ASPEN 100' RT.	156.88
75	234+60	" " 6" ASH 125' LT.	163.28
76	246+10	10" ELM. 100' RT.	184.75

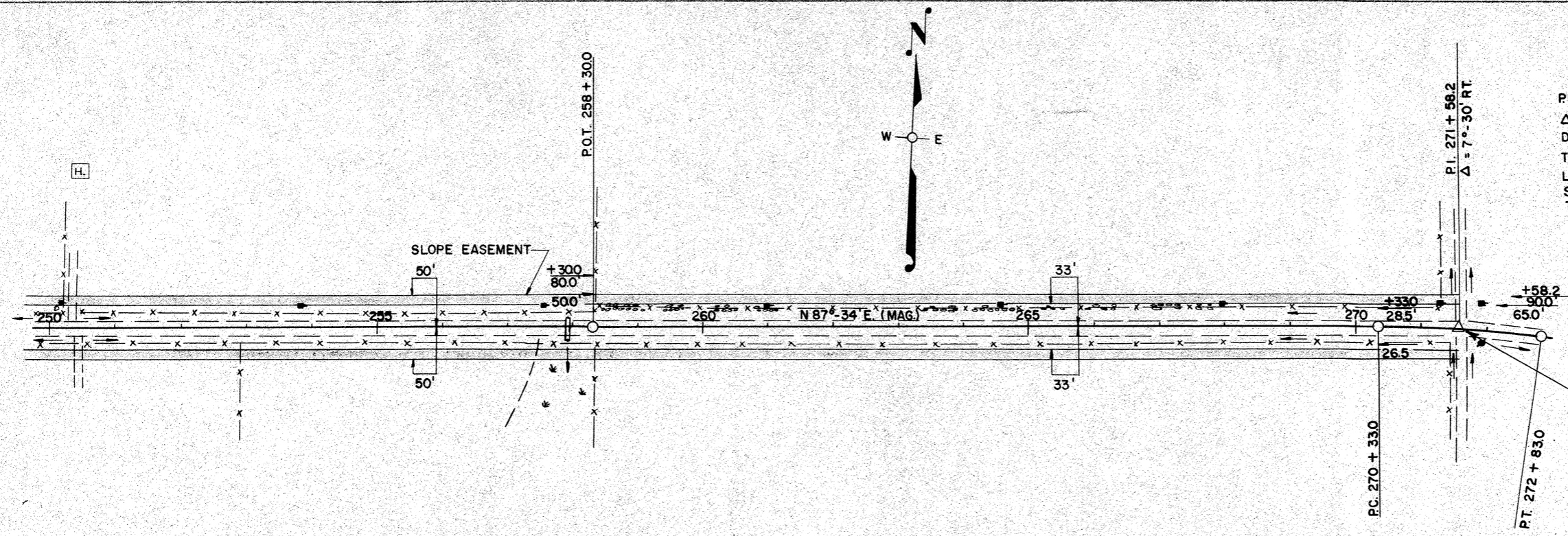
NET CENTER LINE LENGTH STA 220+00 - STA 250+00 = 3000 FT.



DATE 11-67
 SHEET NO. 7
 PROJECT S 1184 (17)
 DRAWN BY S. J. STANGARD
 CHECKED BY S. J. STANGARD
 NO. 8276

PROFILE
 SURVEYED BY S. J. STANGARD
 PLOTTED BY S. J. STANGARD
 DATE 11-67
 NO. 8353

P.I. - 271 + 58.2
 Δ - 7° - 30' RT.
 D - 3°
 T - 125.2'
 L - 250.0'
 S.E. 0.05'/FT.
 TRANS 180FT.

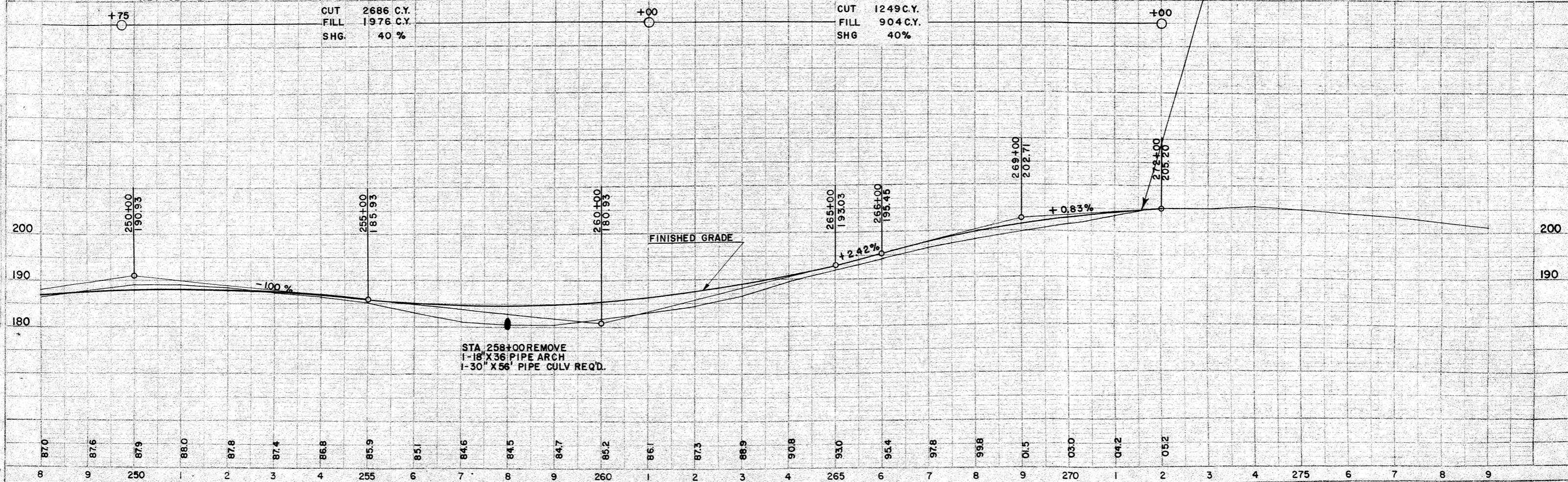


STA. 271 + 58 END OF PROJECT
 S 1184(1)

BENCH MARKS

NO.	STATION	DESCRIPTION	ELEV.
77	257+95	SPIKE IN 8" ASH 70' RT.	179.18
78	272+25	" " 12" BALSAM 100' LT.	203.97

NET CENTER LINE LENGTH STA. 250+00 - STA. 271+58 = 2158 FT.



STA 258+00 REMOVE
 1-18" X 36" PIPE ARCH
 1-30" X 56" PIPE CULV REQ'D.

DATE 11-57
 DRAWN BY S. J. ...
 CHECKED BY ...
 PLAN NO. 8276

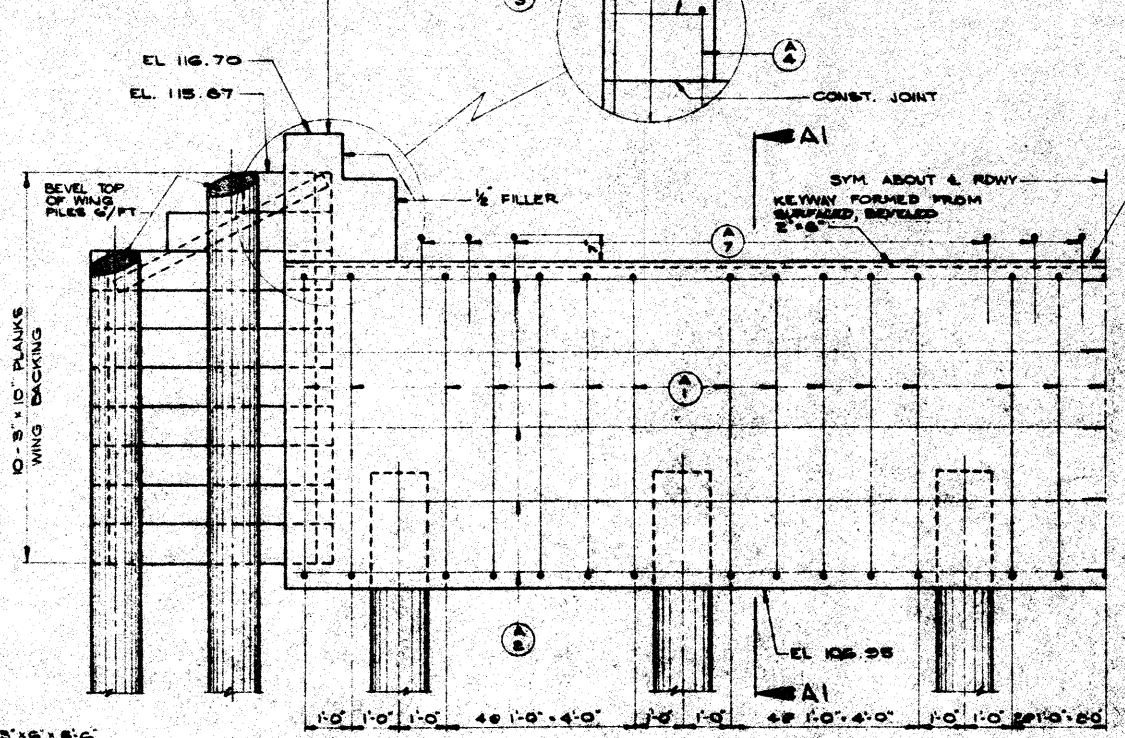
DATE ...
 PROFILE SUBMITTED ...
 NO. 8353

BENCHMARK

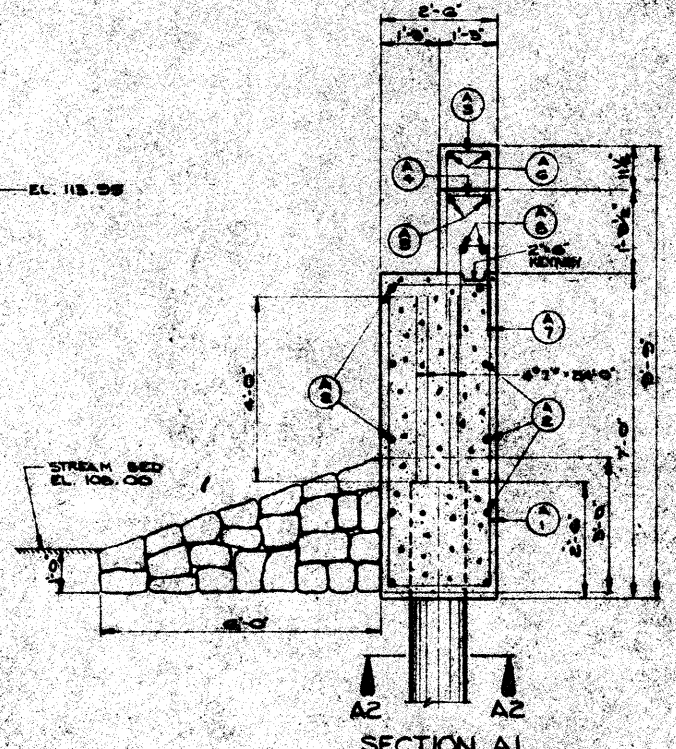
NO.	STATION	DESCRIPTION	ELEV.
68	138+80	SMILE IN R. CUT	800 FT. 114.78

NO.	STATION	CLASS. & AMOUNT	DATE	BY	CHK.
35.6	1184.0	11.1	4	51184(1)	14 36

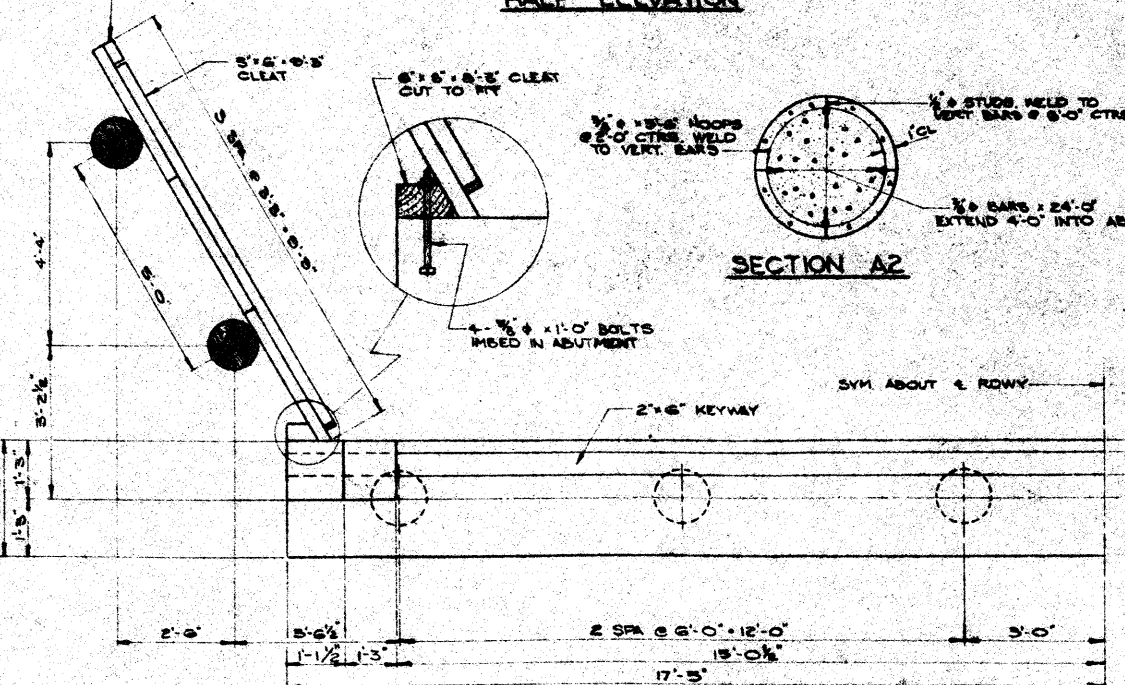
THIS PORTION OF CAP TO BE ROURED AFTER THE GIRDERS ARE PLACED



HALF ELEVATION



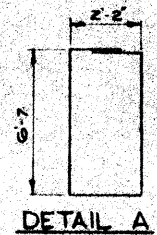
SECTION A1



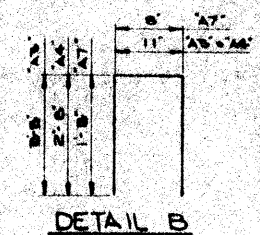
HALF PLAN

TREATED LUMBER & TIMBER

NO.	LENGTH	LOCATION	GRADE
4	8-6	CLEAT - WINGS	1200' J.P.P.
4	8-3		
4	8-3	CLEAT - WINGS	1200' J.P.P.
4	8-3	BACKING - WINGS	1200' J.P.P.
4	8-3		
32	8-3		



DETAIL A

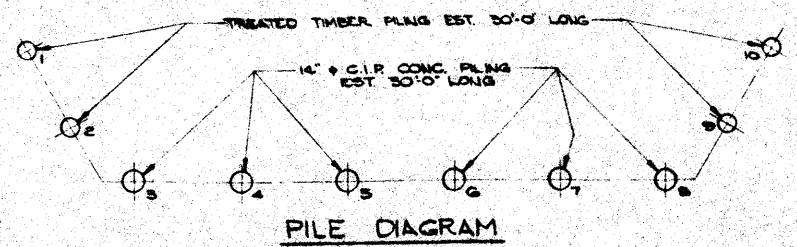


DETAIL B

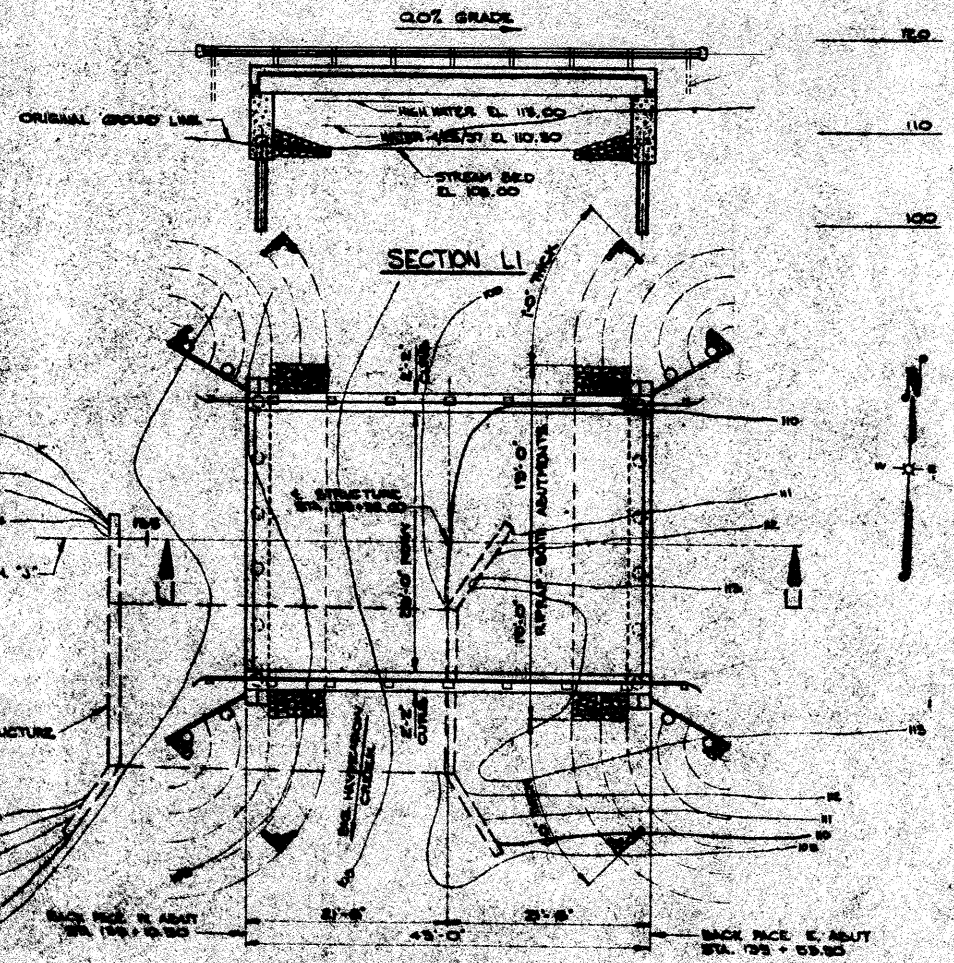
BILL OF BARS 1,520'

DIMENSIONS IN BENDING DETAILS ARE OUT TO OUT

POUR MARK	NO.	SIZE	LENGTH	SPACING	LOCATION	DET.
A1	56	4	16-8	SHOWN	BODY - VERT.	A
A2	40	4	17-0		HORIZ. - TRANS.	
A3	4	4	8-3		WING & BODY - VERT.	B
A4	4	4	6-3			B
A5	4	4	2-0		HORIZ.	
A6	8	4	1-0			
A7	60	4	4-0	1-0	BLOCK & BODY	B
A8	12	4	10-8	SHOWN		



PILE DIAGRAM



SECTION L1

LAYOUT

DRAWING SHALL NOT BE SCALD.
ALL CONCRETE SHALL BE GRADE "AA".
NO PAINT REQUIRED FOR 14" C-I-P CONCRETE PILING.
SEAL ALL EXPOSED EDGES OF CONCRETE "1" UNLESS OTHERWISE SPECIFIED.
BAR STEEL REINFORCEMENT SHALL BE IMBEDDED 2" CLEAR UNLESS OTHERWISE SHOWN OR NOTED.
USE OF STRUCTURAL GRADE BAR STEEL REINFORCEMENT IS PROHIBITED.

GENERAL NOTES

WING PILES FOR ABUTMENTS SHALL BE TREATED TIMBER PILES EST. 30'-0" LONG DRIVEN TO A MIN. BEARING VALUE OF 12 TONS PER PILE. BODY PILES FOR ABUTMENTS SHALL BE 14" C.I.P. CONCRETE PILES EST. 30'-0" LONG DRIVEN TO A MIN. BEARING VALUE OF 12 TONS PER PILE.
FRONT FACE OF ABUTMENTS SHALL BE REPAIRED AS SHOWN IN SECTION A1 ON EXISTING. BLOW OF PILE DURING ENDS OF WINGS TO BE RIPRAPED TO A MINIMUM THICKNESS OF 1'-0" AS DIRECTED BY THE ENGINEER.

TOTAL ESTIMATED QUANTITIES

NO. ITEMS	UNIT	EST.	AMT.	TOTAL
REMOVE OLD BRIDGE	L.S.			1
ELEVATION FOR STRUCTURE'S	C.Y.	98		98
CONCRETE MASONRY GRADE "AA"	C.Y.	51	46.2	97.2
STEEL RAILING	L.F.	107		107
BAR STEEL REINFORCEMENT	L.S.	230	1850	1750
TREATED LUMBER & TIMBER	M.S.M.	110		110
TREATED TIMBER PILING (DRY)	L.F.	240		240
TREATED TIMBER PILING (DRIVEN)	L.F.	200		200
PILE BICES	EACH	8		8
C.I.P. CONCRETE PILING (18 60" DIA)	L.S.			1
C.I.P. CONCRETE PILING (DRIVEN)	L.F.	280		280
C.I.P. CONCRETE PILING (DRIVEN)	L.F.	280		280
RIPRAP	C.Y.	88		88
PRESTRESSED GRIDERS	EACH	10		10
NON B/D ITEMS				
FILLER	CU YD	1		1

LIST OF DRAWINGS

NO.	DESCRIPTION	DATE
1	LAYOUT & ABUTMENTS	11/25/55
2	STRUCTURE	11/25/55

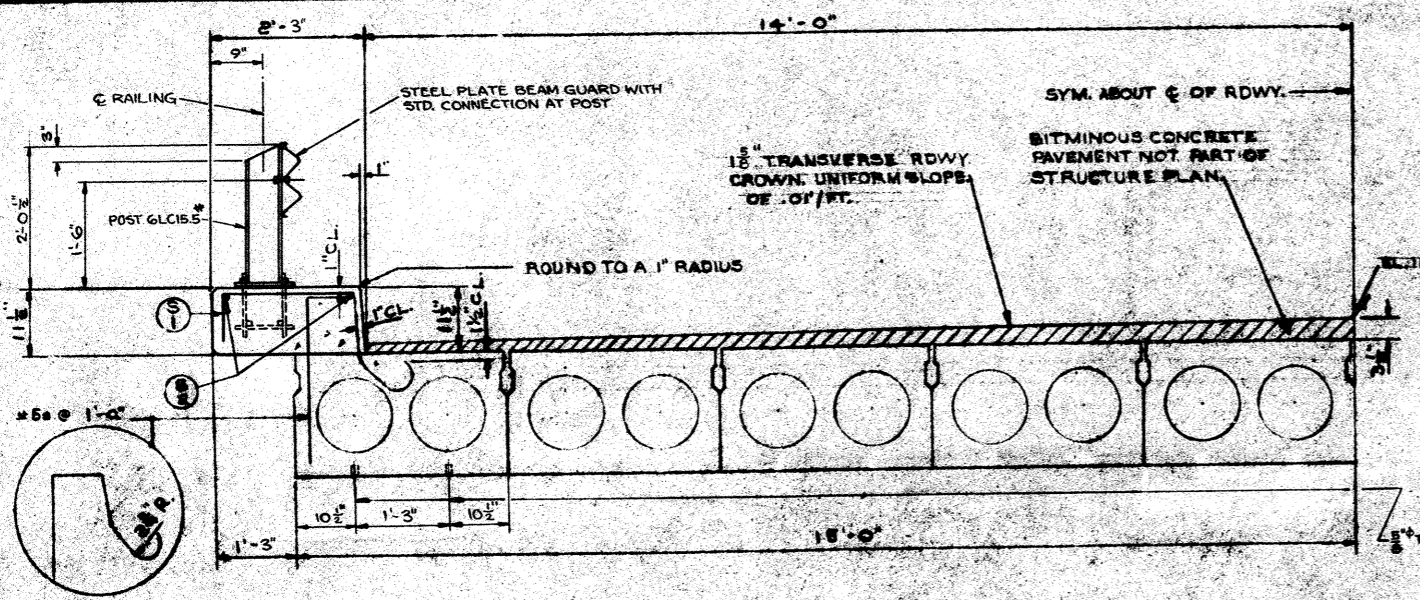
STATE HIGHWAY COMMISSION OF WISCONSIN

LAYOUT & ABUTMENTS

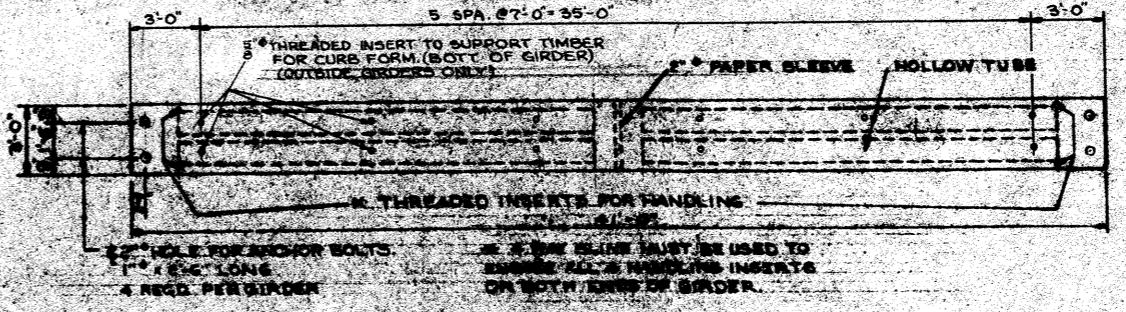
BY LINCOLN
 CHECKED BY SCOLEY
 DATE 11/25/55

DESIGNED BY W.B. Schullz
 DRAWN BY E.L. Ruppel

STRUCTURE B-35-7 SHEET 1 OF 2

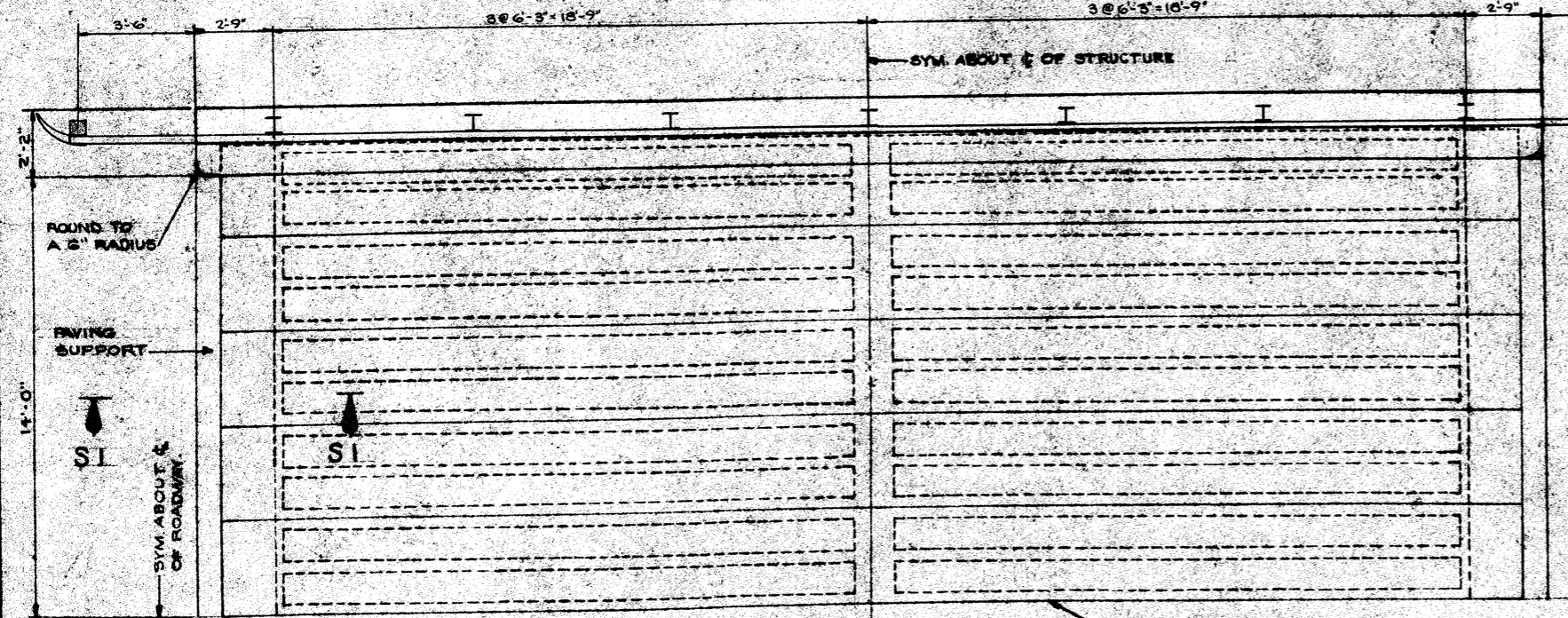


HALF CROSS SECTION OF ROADWAY

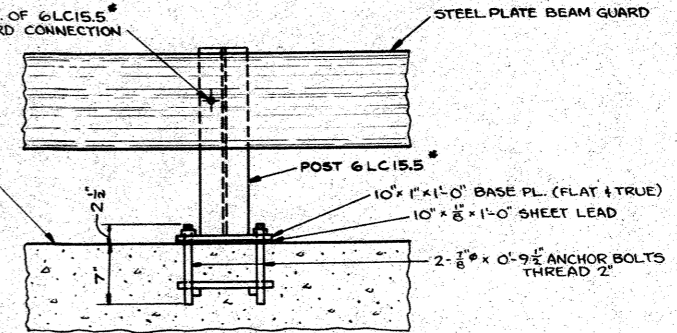


PLAN OF GIRDER

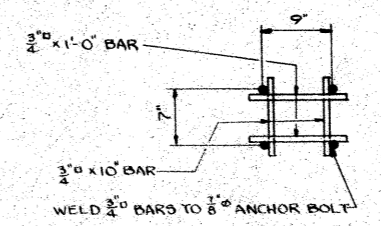
DETAIL OF BAR PART OF PRESTRESSED GIRDERS



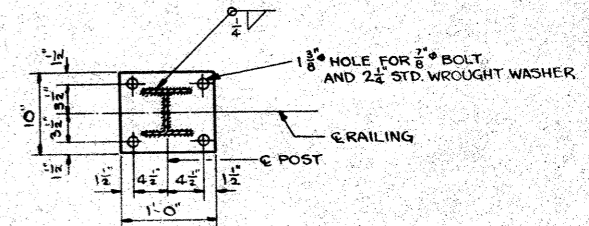
HALF PLAN



RAIL POST DETAIL



POST ANCHOR DETAIL

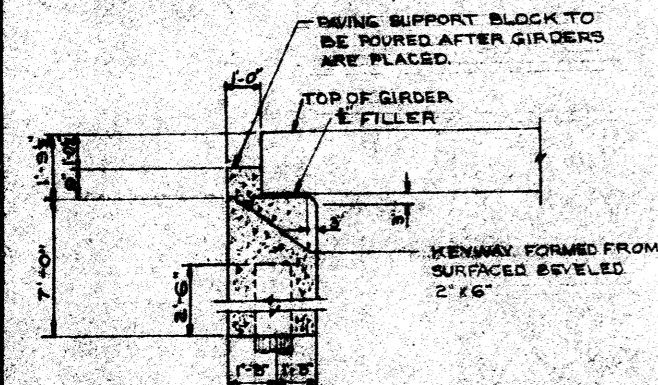


POST BASE PLATE

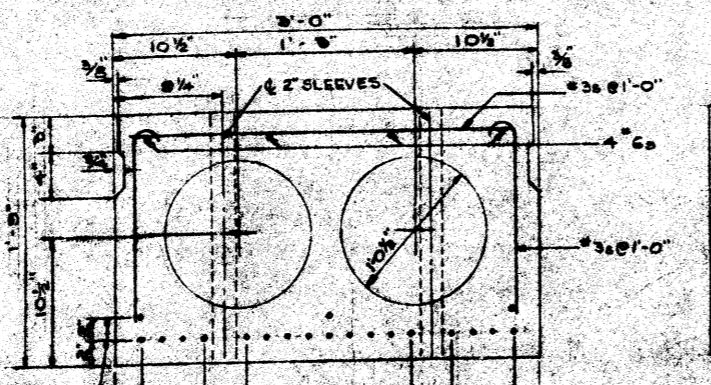
BILL OF BARS
DIMENSIONS IN BENDING DETAILS ARE OUT TO OUT

POUR	MARK	NO.	SIZE	LENGTH	SPACING	LOCATION	DET.
CURB	S 1	8	4	2-6	1-3	CURB TRANS.	A
	S 2	8	4	2-3	SHOWN	" LONG.	

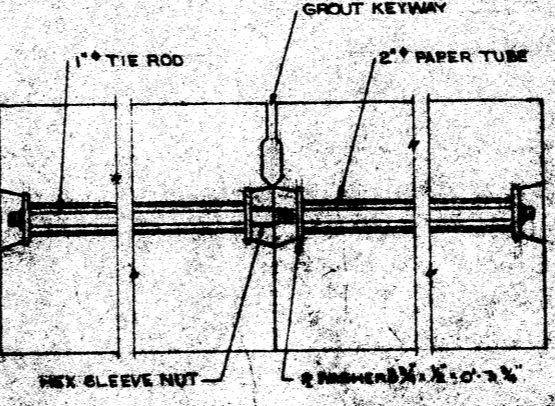
230#



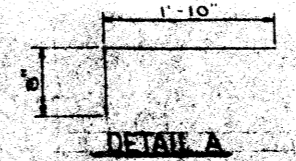
SECTION S1



TYPICAL GIRDER CROSS SECTION



DECK CONNECTION DETAIL



DETAIL A

STATE HIGHWAY COMMISSION OF WISCONSIN			
SUPERSTRUCTURE			
DESIGNED BY	CHECKED BY	DATE	SCALE
11-6-57	C.E.C.	E.D.	N.F.W.
STRUCTURE B-35-7	SHEET 2 OF 2		