

FED. ROAD DIST. NO.	STATE	STATE PROJ. NO.	SHEET NO.	TOTAL SHEETS
4	WISC.	7069	4	90

DIVISION JOB NO. 7069

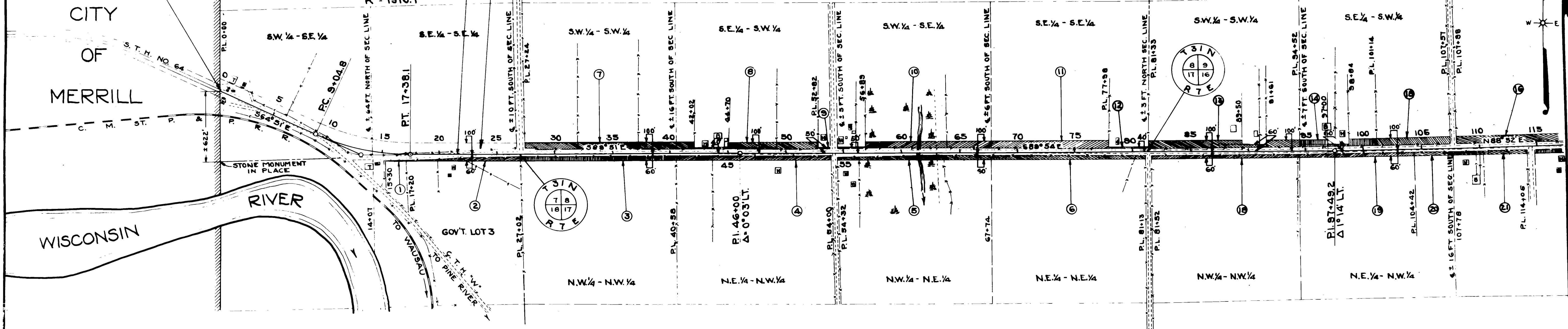
BEG. OF RELOC. ORDER
DIV. JOB NO. 7069
STA. 0+00 - STA. 478+41
END OF U.S.P.W.H. PROJECT NO. N.R.M. 518A

END OF RELOC. ORDER
DIV. JOB NO. 7971
STA. 698+00
STA. 21+55 DIV. JOB NO. 7069

PI = 13+28.2
Δ = 25°00' LT.
T = 3°00'
L = 423.4'
R = 833.3'
R = 1910.1'

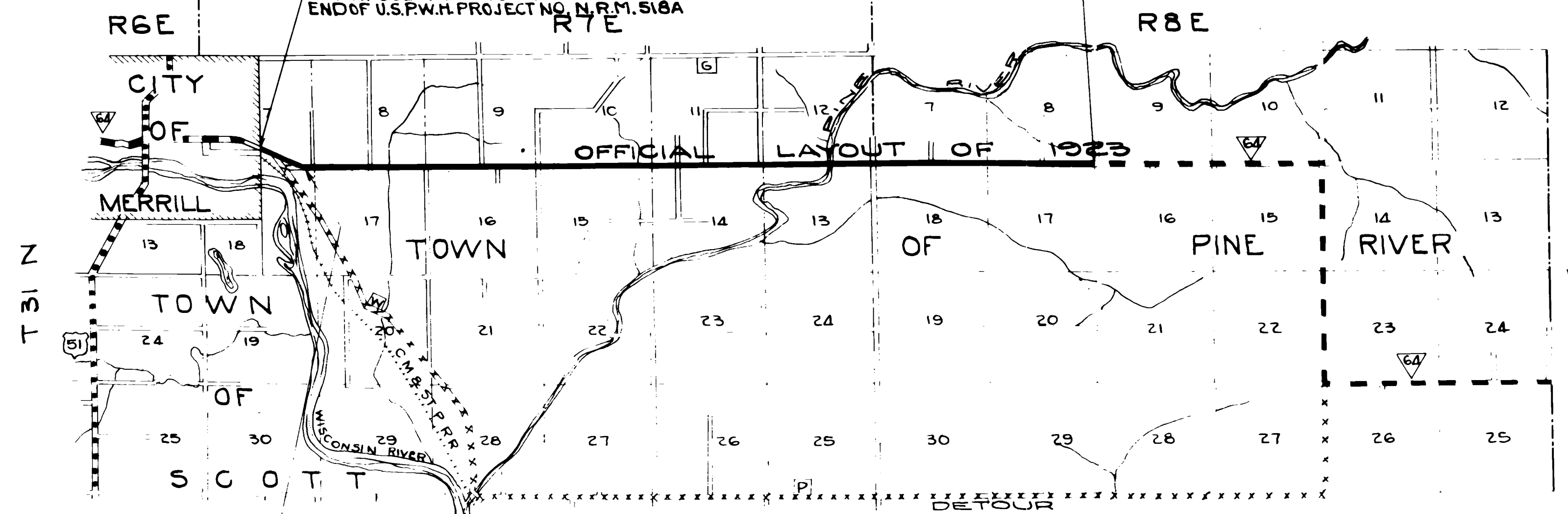
R/W PURCHASED UNDER DIV. JOB NO. 7971

OFFICIAL LAYOUT OF 1923



STA. 0+00
BEG. OF RELOC. ORDER
DIV. JOB NO. 7069 - STA. 478+41
END OF U.S.P.W.H. PROJECT NO. N.R.M. 518A

STA. 400+00
END OF RELOC. ORDER
DIV. JOB NO. 7069



END OF RELOC. ORDER
DIV. JOB NO. 7971
STA. 698+00
STA. 21+55 DIV. JOB NO. 7069

LOCATION SKETCH
SCALE 0 1 2
MILES

DRAWN BY W.V.G. AND C.W.G.
COMPUTED BY C.W.G.
CHECKED BY C.E.H.

REVISED JUNE 21-1939 L.M.P.
REVISED BY MMH FEB. 17, 1939
REVISED 7.6/1938
BY W.V.G.

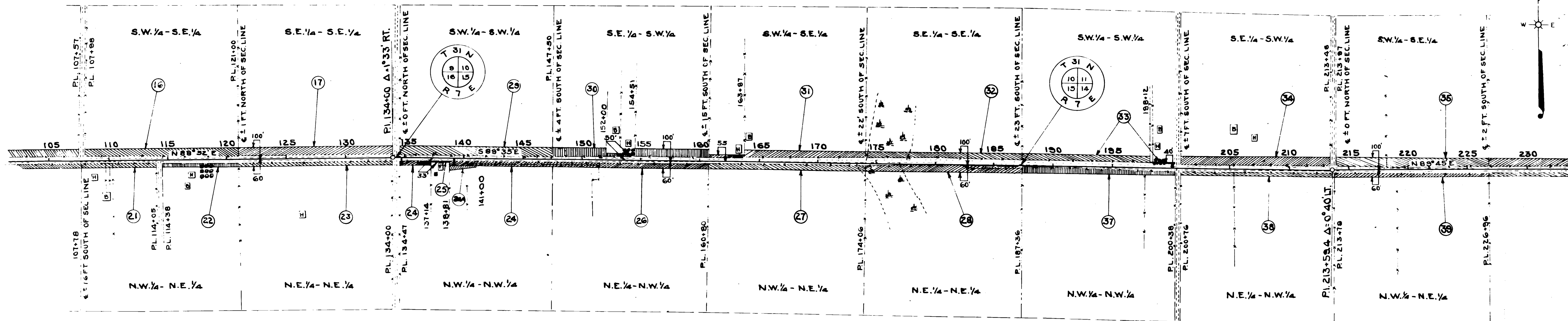
PLAT OF RIGHT OF WAY REQUIRED
DIVISION JOB NO. 7069
MERRILL - ANTIGO ROAD
S.T.H. NO. 64 LINCOLN COUNTY
SCALE
0 1 2 3 4 5 6

DS 7069

FED. ROAD DIST. NO.	STATE	STATE PROJ. NO.	SHEET NO.	TOTAL SHEETS
4	WISC.	7069	5	90

DIVISION JOB NO. 7069

OFFICIAL LAYOUT OF 1923

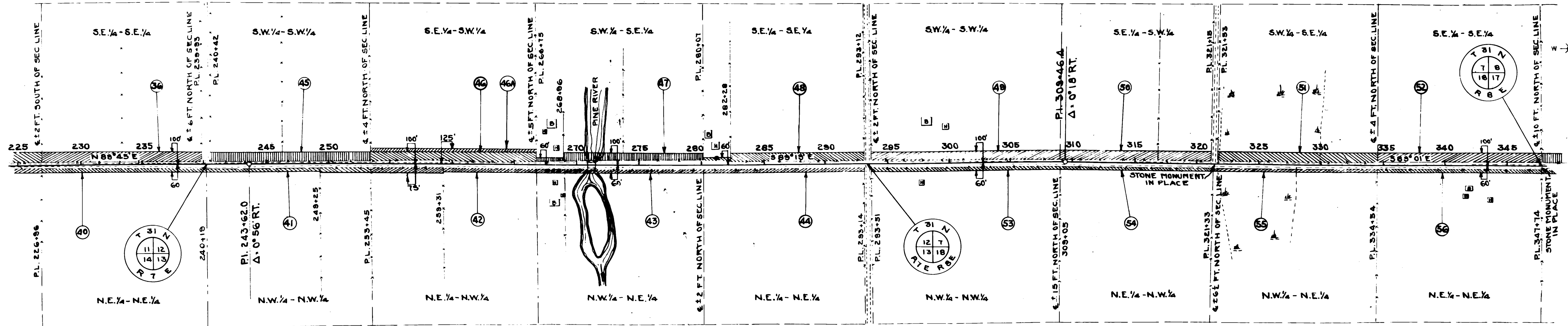


REVISED JUNE 21-1939 LMP
 REVISED BY MMH FEB. 17, 1939
 REVISED 7/6, 1938
 BY W.V.G.

PLAT OF RIGHT OF WAY REQUIRED
 DIVISION JOB NO. 7069
 MERRILL — ANTIGO ROAD
 S.T.H. NO. 64 LINCOLN COUNTY
 SCALE
 0 1 2 3 4 5 6

DJ 7069

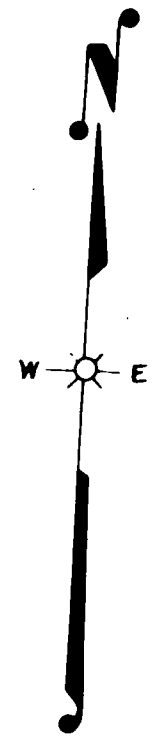
OFFICIAL LAYOUT OF 1923



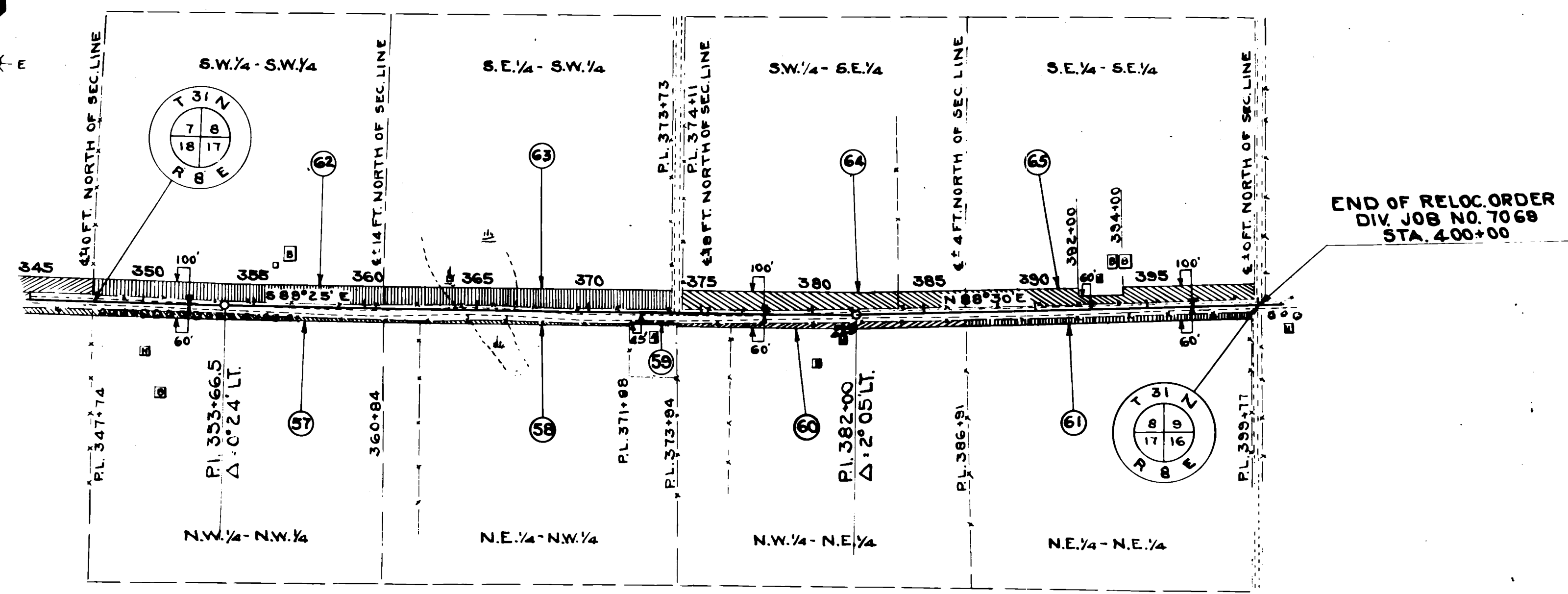
REVISED JUNE 21-1939 L.M.P.
 REVISED BY MMH FEB. 17, 1939
 REVISED 7/6/1938
 BY W.V.C.

PLAT OF RIGHT OF WAY REQUIRED
 DIVISION JOB NO. 7069
 MERRILL - ANTIGO ROAD
 S.T.H. NO. 64 LINCOLN COUNTY
 SCALE
 0 1 2 3 4 5 6

DJ 7069



OFFICIAL LAYOUT OF 1923



PAR.	OWNER	ADDRESS	DESCRIPTION	ACRES PURCHASED			TOTAL	PAR.
				MARSH	UNIMPROVED	IMPROVED		
1	AUGUST GUTZMER AND EDNA HIS WIFE		PART OF GOVT. LOT 3 SEC. 18 T31N RTE	0.00	0.00	0.06	0.06	1
2	FRED NIENOW AND AUGUSTA "		PART OF GOVT. LOT 3 SEC. 18 T31N RTE	0.00	0.00	0.65	0.65	2
3	MRS. GEO. ROTH LISBERG		N.W. 1/4 N.W. 1/4 SEC. 17 T31N RTE	0.00	1.46	0.00	1.46	3
4	GUST DETTMERING AND ANNA HIS WIFE		N.E. 1/4 N.W. 1/4 SEC. 17 T31N RTE	0.00	0.00	1.29	1.29	4
5	WALTER BOETTCHER AND CLARA "		N.W. 1/4 N.E. 1/4 SEC. 17 T31N RTE	0.77	0.00	0.53	1.30	5
6	" " " " " "		N.E. 1/4 N.E. 1/4 SEC. 17 T31N RTE	0.00	0.07	1.02	1.09	6
7	CHARLES A. RUNGE AND MARIE "		S.W. 1/4 S.W. 1/4 SEC. 8 T31N RTE	0.00	0.00	1.89	1.89	7
8	" " " " " "		PART OF S.E. 1/4 S.W. 1/4 SEC. 8 T31N RTE	0.00	0.00	1.53	1.53	8
9	OTTO F. ZASTROW AND EVELYN "		PART OF S.E. 1/4 S.W. 1/4 SEC. 8 T31N RTE	0.00	0.00	0.05	0.05	9
10	AUGUST MEYER (ESTATE)		S.W. 1/4 S.E. 1/4 SEC. 8 T31N RTE	1.16	0.00	0.70	1.86	10
11	" " " " " "		PART OF S.E. 1/4 S.E. 1/4 SEC. 8 T31N RTE	0.00	0.00	1.81	1.81	11
12	SCHOOL DISTRICT NO. 5		PART OF S.E. 1/4 S.E. 1/4 SEC. 9 T31N RTE	0.00	0.00	0.16	0.16	12
13	WM. STECKLING & ANNA HIS WIFE		S.W. 1/4 S.W. 1/4 SEC. 9 T31N RTE	0.00	0.00	2.13	2.13	13
14	PAUL KANITZ AND MABEL HIS WIFE		W. 1/2 S.E. 1/4 S.W. 1/4 SEC. 9 T31N RTE	0.00	0.00	0.97	0.97	14
15	AMELIA KANITZ		E. 1/2 S.E. 1/4 S.W. 1/4 SEC. 9 T31N RTE	0.00	0.00	1.03	1.03	15
16	HARRY BUCK AND BERTHA HIS WIFE		S.W. 1/4 S.E. 1/4 SEC. 9 T31N RTE	0.00	0.00	2.15	2.15	16
17	EMILIA GRUETZMACHER		S.E. 1/4 S.E. 1/4 SEC. 9 T31N RTE	0.00	0.00	2.33	2.33	17
18	ART BUCK AND ERNA HIS WIFE		N.W. 1/4 N.W. 1/4 SEC. 16 T31N RTE	0.00	1.07	0.00	1.07	18
19	" " " " " "		PART OF N.E. 1/4 N.W. 1/4 SEC. 16 T31N RTE	0.00	0.00	0.93	0.93	19
20	HARRY BUCK AND BERTHA "		PART OF N.E. 1/4 N.W. 1/4 SEC. 16 T31N RTE	0.00	0.00	0.30	0.30	20
21	" " " " " "		PART OF N.W. 1/4 N.E. 1/4 SEC. 16 T31N RTE	0.00	0.00	0.58	0.58	21
22	OTTO BUCK AND MINNIE "		PART OF N.W. 1/4 N.E. 1/4 SEC. 16 T31N RTE	0.00	0.00	0.56	0.56	22
23	HUGO SEMRAU AND MINNIE "		N.E. 1/4 N.E. 1/4 SEC. 16 T31N RTE	0.00	0.00	1.04	1.04	23
24	CHAS. DREVES AND MINNIE "		PART OF N.W. 1/4 N.W. 1/4 SEC. 15 T31N RTE	0.00	0.00	0.79	0.79	24
25	FARMERS DAIRY CO.		PART OF N.W. 1/4 N.W. 1/4 SEC. 15 T31N RTE	0.00	0.00	0.03	0.03	25
26	CHAS. DREVES AND MINNIE HIS WIFE		N.E. 1/4 N.W. 1/4 SEC. 15 T31N RTE	0.00	0.93	0.27	1.20	26
27	HERMAN SCHLEIF (ESTATE)		N.W. 1/4 N.E. 1/4 SEC. 15 T31N RTE	0.00	0.57	0.86	1.53	27
28	FRED VANSELOW AND MARTHA HIS WIFE		N.E. 1/4 N.E. 1/4 SEC. 15 T31N RTE	0.39	1.43	0.00	1.82	28
29	ERVIN I GRUETZMACHER AND ANNA M. HIS WIFE		S.W. 1/4 S.W. 1/4 SEC. 10 T31N RTE	0.00	0.00	2.24	2.24	29
30	ADOLPH D. HINZ AND EMMA HIS WIFE		S.E. 1/4 S.W. 1/4 SEC. 10 T31N RTE	0.00	0.00	1.90	1.90	30
31	RICHARD WEEGE AND CLARA HIS WIFE		S.W. 1/4 S.E. 1/4 SEC. 10 T31N RTE	0.00	0.00	1.42	1.42	31
32	FRANK LEMKE AND ANNA "		S.E. 1/4 S.E. 1/4 SEC. 10 T31N RTE	0.44	1.15	0.00	1.59	32
33	" " " " " "		S.W. 1/4 S.W. 1/4 SEC. 11 T31N RTE	0.00	0.00	1.61	1.61	33
			TOTAL THIS SHEET	2.76	6.68	30.93	40.37	

REVISED JUNE 21-1939 LMP
 REVISED BY MMH. FEB. 17, 1939
 REVISED 7/6/1938
 BY W.V.G.

PLAT OF RIGHT OF WAY REQUIRED
 DIVISION JOB NO. 7069
 MERRILL—ANTIGO ROAD
 S.T.H. NO. 64 LINCOLN COUNTY

SCALE

DJ 7069

PAR.	OWNER	ADDRESS	DESCRIPTION	ACRES PURCHASED				
				MARSH	UNIMPROVED	IMPROVED	TOTAL	PAR.
34	JULIUS LAABS, INCOMPETENT AND ALVINA HIS WIFE, HERMAN LAABS AND MARTHA HIS WIFE, AND HENRY LAABS		SE 1/4 SW 1/4 SEC. 11 T31N R7E	0.00	0.00	2.07	2.07	34
35	CHAS. BOETTCHER AND HELEN HIS WIFE		SW 1/4 SE 1/4 SEC. 11 T31N R7E	0.00	1.57	0.72	2.29	35
36	CARL SCHMIDTKE AND ADELA		SE 1/4 SE 1/4 SEC. 11 T31N R7E	0.00	0.00	2.35	2.35	36
37	HERMAN KRUEGER AND HELEN		NW 1/4 NW 1/4 SEC. 14 T31N R7E	0.00	0.00	1.46	1.46	37
38	MINNIE SCHMIDTKE		NE 1/4 NW 1/4 SEC. 14 T31N R7E	0.00	0.71	0.41	1.12	38
39	JULIUS LATZIG AND MARTHA HIS WIFE		NW 1/4 NE 1/4 SEC. 14 T31N R7E	0.00	0.40	0.60	1.00	39
40	CARL W. KARAU AND HELEN		NE 1/4 NE 1/4 SEC. 14 T31N R7E	0.00	0.00	0.87	0.87	40
41	" " " " " "		NW 1/4 NW 1/4 SEC. 13 T31N R7E	0.00	0.44	0.67	1.11	41
42	ALBERT KARAU AND ANNA		NE 1/4 NW 1/4 SEC. 13 T31N R7E	0.00	0.62	0.51	1.13	42
43	" " " " " "		NW 1/4 NE 1/4 SEC. 13 T31N R7E	0.00	0.54	0.47	1.01	43
44	" " " " " "		NE 1/4 NE 1/4 SEC. 13 T31N R7E	0.00	0.00	1.05	1.05	44
45	FRANK LEMKE AND ANNA		SW 1/4 SW 1/4 SEC. 12 T31N R7E	0.00	0.00	2.42	2.42	45
46	ART VANSELOW AND PEARL		SE 1/4 SW 1/4 SEC. 12 T31N R7E	0.00	2.32	0.00	2.32	46
47	ARTHUR KARAU AND KATHERINE		SW 1/4 SE 1/4 SEC. 12 T31N R7E	0.00	0.78	1.17	1.95	47
48	ULRICH RENKIN AND ADELA		SE 1/4 SE 1/4 SEC. 12 T31N R7E	0.00	0.00	2.12	2.12	48
49	ALVIN KARAU AND AGNES F		SW 1/4 SW 1/4 SEC. 7 T31N R8E	0.00	0.00	2.92	2.92	49
50	" " " " " "		SE 1/4 SW 1/4 SEC. 7 T31N R8E	0.00	0.00	2.28	2.28	50
51	LESLIE PANKOW AND RUTH		SW 1/4 SE 1/4 SEC. 7 T31N R8E	1.53	0.85	0.00	2.44	51
52	AUGUST K FALK AND ELIZABETH		SE 1/4 SE 1/4 SEC. 7 T31N R8E	0.00	2.39	0.00	2.39	52
53	CARL KARAU AND HELEN		NW 1/4 NW 1/4 SEC. 18 T31N R8E	0.00	0.00	1.00	1.00	53
54	" " " " " "		NE 1/4 NW 1/4 SEC. 18 T31N R8E	0.00	0.76	0.00	0.76	54
55	FRANK VALENTA AND MARIE		NW 1/4 NE 1/4 SEC. 18 T31N R8E	0.60	0.51	0.00	1.11	55
56	LESLIE PANKOW AND RUTH		NE 1/4 NE 1/4 SEC. 18 T31N R8E	0.00	0.00	0.91	0.91	56
57	WM. PANKOW AND ALBERTINA		NW 1/4 NW 1/4 SEC. 17 T31N R8E	0.00	0.00	0.57	0.57	57
58	" " " " " "		PART OF NE 1/4 NW 1/4 SEC. 17 T31N R8E	0.10	0.31	0.02	0.43	58
59	SCHOOL DISTRICT NO. 4		PART OF NE 1/4 NW 1/4 SEC. 17 T31N R8E	0.00	0.00	0.02	0.02	59
60	PAULINE BOETTCHER AND RICHARD HER HUSBAND		NW 1/4 NE 1/4 SEC. 17 T31N R8E	0.00	0.00	0.92	0.92	60
61	GOTTLIEB KARAU AND AUGUSTA HIS WIFE		NE 1/4 NE 1/4 SEC. 17 T31N R8E	0.00	0.00	1.03	1.03	61
62	CARL A. SCHMIDTKE AND ADELA HIS WIFE		SW 1/4 SW 1/4 SEC. 8 T31N R8E	0.00	0.00	2.56	2.56	62
63	" " " " " "		SE 1/4 SW 1/4 SEC. 8 T31N R8E	0.64	1.80	0.00	2.44	63
64	ETHEL O'DAY		SW 1/4 SE 1/4 SEC. 8 T31N R8E	0.00	0.00	2.62	2.62	64
65	" " " " " "		SE 1/4 SE 1/4 SEC. 8 T31N R8E	0.00	0.00	2.22	2.22	65
24A	CHARLES DREYES & MINNIE HIS WIFE		PART OF NW 1/4 NW 1/4 SEC. 15 T31N R7E	0.00	0.00	0.13	0.13	24A
46A	ART VANSELOW & PEARL, HIS WIFE		SE 1/4 SW 1/4 SEC. 12 T31N R7E	0.00	0.00	0.76	0.76	46A
			TOTAL THIS SHEET	2.93	14.00	34.95	51.88	
			GRAND TOTAL	5.69	20.68	65.88	92.25	

REVISED JUNE 21-1939 L.M.P.
 REVISED BY MMH, FEB. 17, 1939
 REVISED 7/6/1938
 BY W.V.G.

PLAT OF RIGHT OF WAY REQUIRED
 DIVISION JOB NO. 7069
 MERRILL — ANTIGO ROAD
 S.T.H. NO. 64 LINCOLN COUNTY
 SCALE

DJ 7069