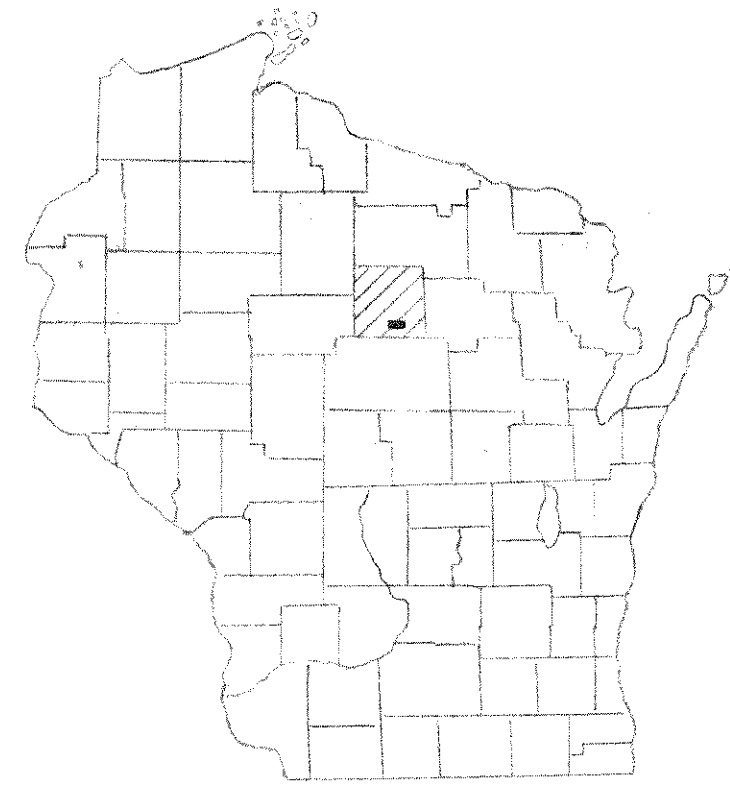


INDEX OF SHEETS

- SHEET NO. 1 TITLE
- SHEET NO. 2 ESTIMATE OF QUANTITIES
- SHEET NO. 3 PLAN - PROFILE
- SHEET NO. 4 LAYOUT and PIERS
- SHEET NO. 5 ABUTMENTS
- SHEET NO. 6 SUPERSTRUCTURE
- SHEET NO. 7 RAILING

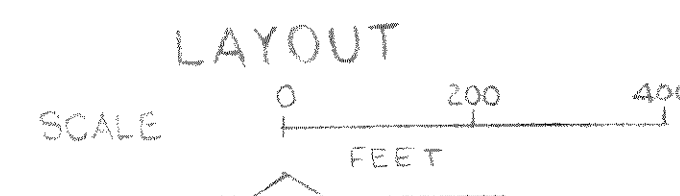
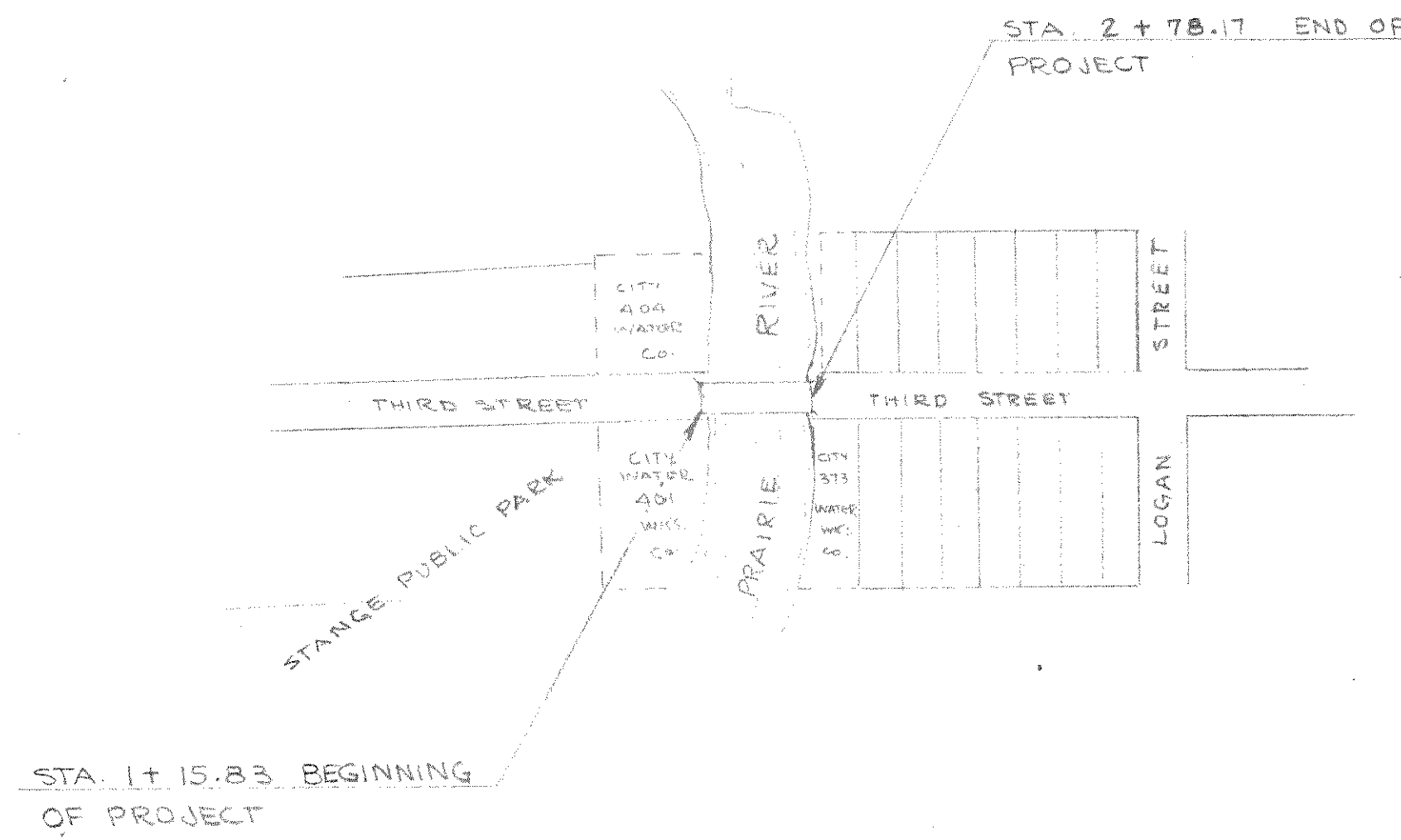


STATE OF WISCONSIN
CITY OF MERRILL WISCONSIN

PLAN AND PROFILE OF PROPOSED
THIRD STREET BRIDGE
THIRD STREET - CITY OF MERRILL
LINCOLN COUNTY

COUNTY AND HIGHWAY	ROUTE AND SECTION	CLASS AND AGREEMENT		S.P.R. REG'D. DIVISION	SHEET NUMBER	TOTAL SHEETS
		STATE	FEDERAL			
35.9	0.0			4 WIS.	1	

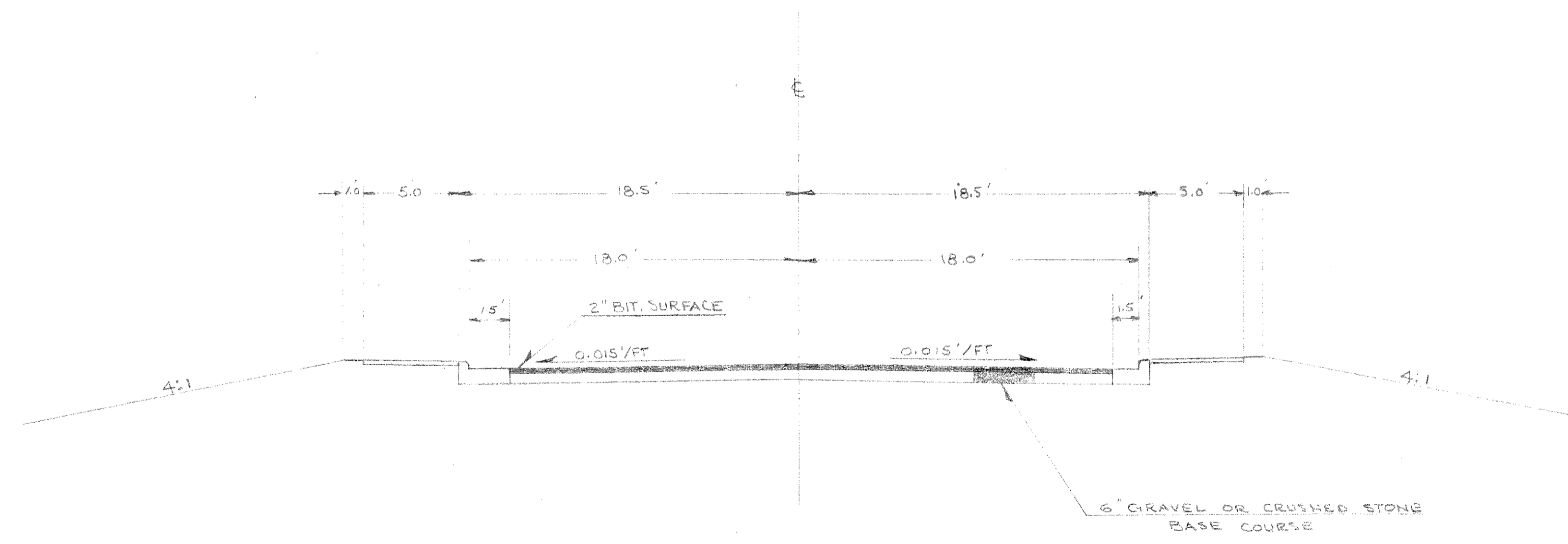
PLAN 1 IN. = 100 FT.
PROFILE HOR. 1 IN. = 100 FT. VERT. 1 IN. = 10 FT.



ESTIMATE OF QUANTITIES

THIS PROJECT IS TO BE EXECUTED UNDER THE STANDARD SPECIFICATIONS FOR ROAD AND BRIDGE CONSTRUCTION OF THE STATE HIGHWAY COMMISSION OF WISCONSIN — EDITION OF 1937 APPROVED AUGUST 9, 1937

STATION TO STATION	ITEM NO.	NET LENGTH OF CENTER LINE	REMOVING OLD BRIDGE STA.		EXCAVATION FOR STRUCTURES, BRIDGES,	GRANULAR BACK FILL	CONCRETE MASONRY, BRIDGES	BAR STEEL REINFORCEMENT, BRIDGES	CAST-IN-PLACE CONCRETE DELIVERED	CAST-IN-PLACE CONCRETE PILING DRIVEN	STEEL RAILING	HEAVY RIPRAP
			2104-2	2107-1								
	UNIT	LIN. FT.	L.S.	C.Y.	C.Y.	C.Y.	LB.	LIN. FT.	LIN. FT.	LIN. FT.	C.Y.	
STA. 1+15.83 — 2+78.17		162.33	1	160	55	461.4	88,282	1085	1020	321	150	

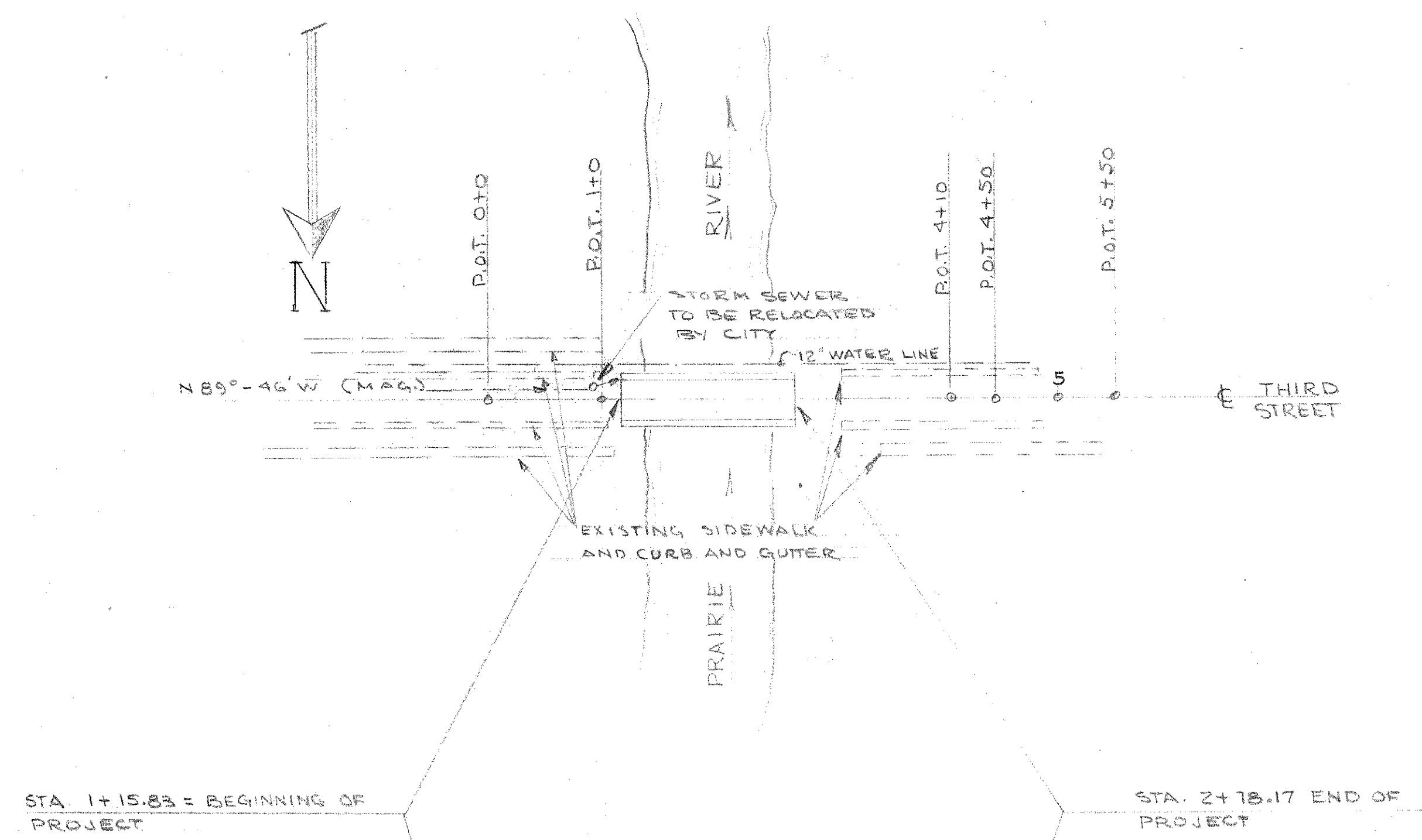


TYPICAL SECTION AT BRIDGE APPROACH

B. P. R. DIVISION	PROJECT	SHEET NUMBER	TOTAL SHEETS
4		3	

PLAN
 SURVEYED, PLOTTED, CHECKED, REVISIONS CHECKED.
 NOTE BOOK NO. _____
 DATE _____

PROFILE
 SURVEYED, GRADES CHECKED, REVISIONS CHECKED.
 NOTE BOOK NO. _____
 DATE _____



NET CENTERLINE LENGTH STA. 1+15.83 - 2+78.17 = 162.33 LIN. FT.

BENCH MARKS

No	STATION	DESCRIPTION	ELEV.
1	1+32	NORTH RIM M.H. # 552 COVER 16' LT	1262.54
2	0+0	NORTH RIM M.H. # 551 COVER 4' LT	1262.95

