

STATE PROJECT	FEDERAL PROJECT	
	PROJECT	CONTRACT
9859-2-70	BRZ 3599(5)	I

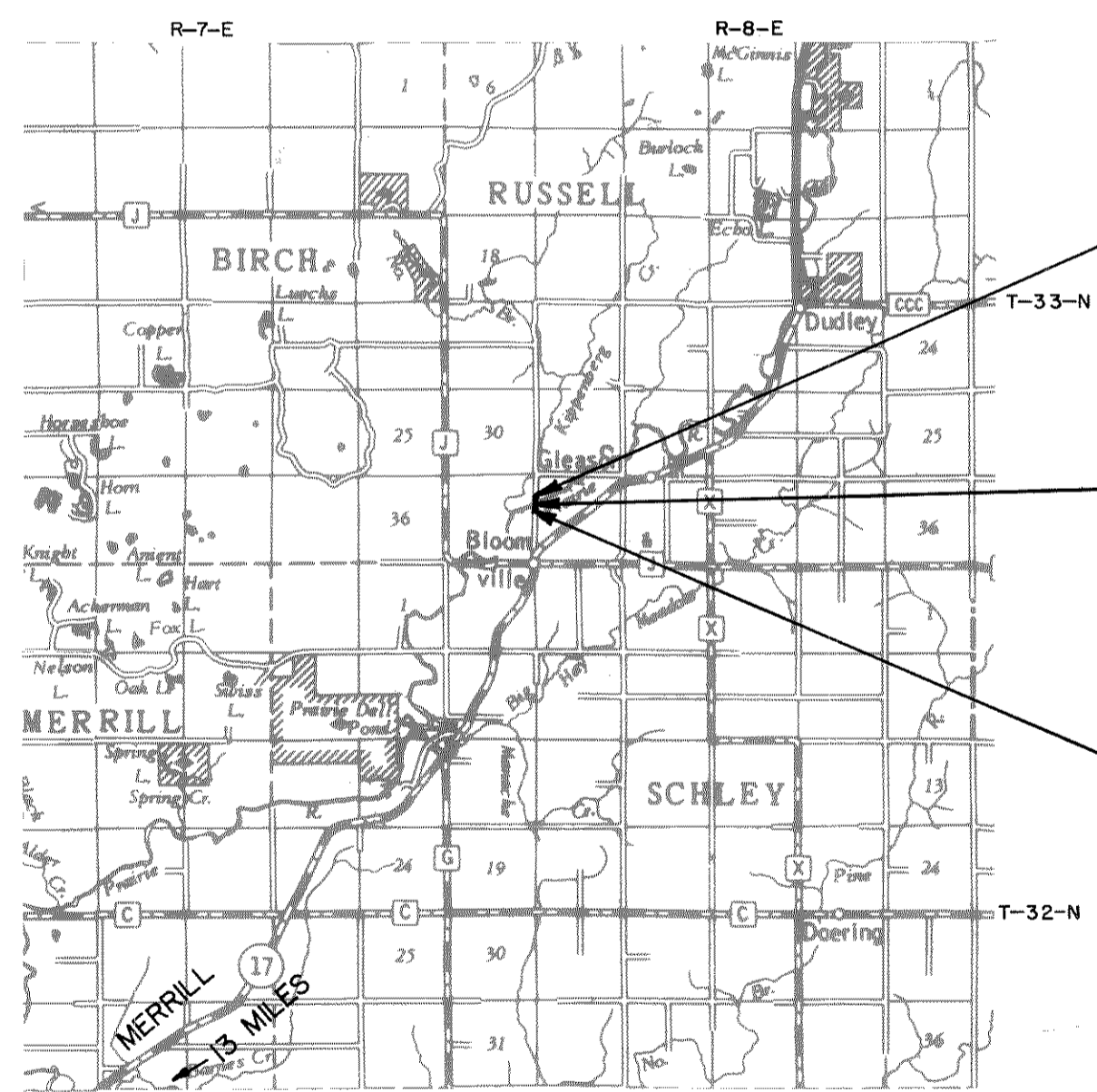
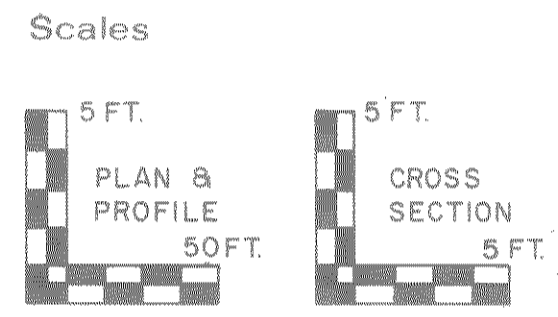
# STATE OF WISCONSIN DEPARTMENT OF TRANSPORTATION

## PLAN OF PROPOSED IMPROVEMENT

# PRAIRIE RIVER BRIDGE AND APPROACHES

## AXEN DRIVE LOCAL ROAD LINCOLN COUNTY

STATE PROJECT NUMBER  
**9859-2-70**



**END PROJECT**  
STA. 12+00  
N - 536,700 (±200)  
E - 2,121,600 (±200)

**STRUCTURE B-35-82**

**BEGIN PROJECT**  
STA. 7+00  
N - 536,200 (±200)  
E - 2,121,600 (±200)

Layout  
Scale 0 1 Mi. 2 Mi.  
Total Net Length of Centerline = 0.095 Mi.

### Index of Sheets

Sheet No. 1	Title
Sheet No. 2	Typical Sections and Details
Sheet No. 3	Estimate of Quantities
Sheet No. 3A	Miscellaneous Quantities
Sheet No. -	Right of Way Plat
Sheet No. 5	Plan and Profile STA. 7+00 TO STA. 12+00
Sheet No. 6-6.5	Standard Detail Drawings
Sheet No. -	Standard Sign Plates
Sheet No. 8-8.9	Structure Plans
Sheet No. -	Computer Earthwork Data
Sheet No. 9	Cross Sections

TOTAL SHEETS = 22

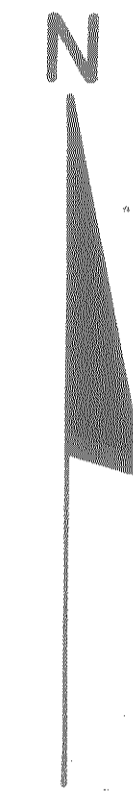


### Design Designation

A.D.T. (1980)	=	82
A.D.T. (2000)	=	149
D.H.V. (2000)	=	22
D.	=	60%
T.	=	10% DHV
V.	=	40 MPH

### Conventional Signs

County Line . . . . .	-----	Caution Symbol (Combustible fluids under pressure) . . . . .	
Township or Range Line . . . . .	-----	Railroads . . . . .	
Section Line . . . . .	-----	Fence . . . . .	
Corporate or City Limits . . . . .	-----	Culverts in Place . . . . .	
Property line . . . . .	-----	Culverts Required . . . . .	
Lot Line . . . . .	-----	Power Pole . . . . .	
Existing Right of Way Line . . . . .	-----	Telephone or Telegraph Pole . . . . .	
New Right of Way Line . . . . .	-----	Right of Way Markers . . . . .	
Base or Survey Line . . . . .	-----	Marsh . . . . .	
Slope Intercept . . . . .	-----	Wooded Area . . . . .	
Existing Roadway or Private Entrance . . . . .	-----	Grade Elevation . . . . .	



APPROVED FOR RUSSELL TOWNSHIP

Date 8-7-80 Chairman

APPROVED FOR LINCOLN COUNTY

Date 3-10-83 Chairman  
Date 8-7-80 Commissioner

ORIGINAL  
PLANS PREPARED BY  
DONOHUE & ASSOCIATES INC.  
CONSULTING ENGINEERS



Date 6/19/80

STATE OF WISCONSIN  
DEPARTMENT OF TRANSPORTATION

Surveyor DONOHUE & ASSOC., INC. District Checker  
Designer DONOHUE & ASSOC., INC. C. O. Checker   
District Supervisor R.J.S. C.O. Coordinator

Approved:   
Date 3/11/83 District Transportation Director

Approved:   
Date 4-5-83 Chief Design Engineer

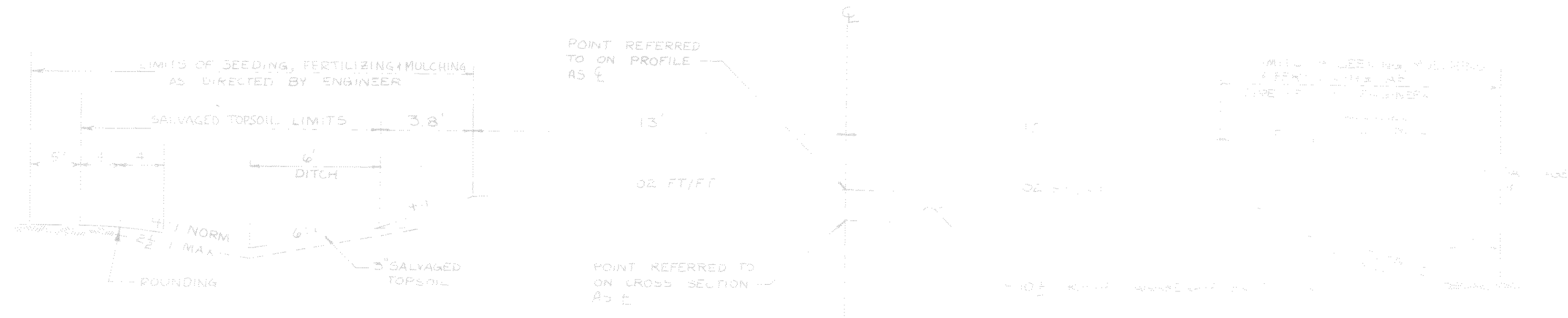
Approved:   
Date 4/5/83 District Development

U.S. DEPARTMENT OF TRANSPORTATION  
FEDERAL HIGHWAY ADMINISTRATION  
REGION 5 WISCONSIN DIVISION

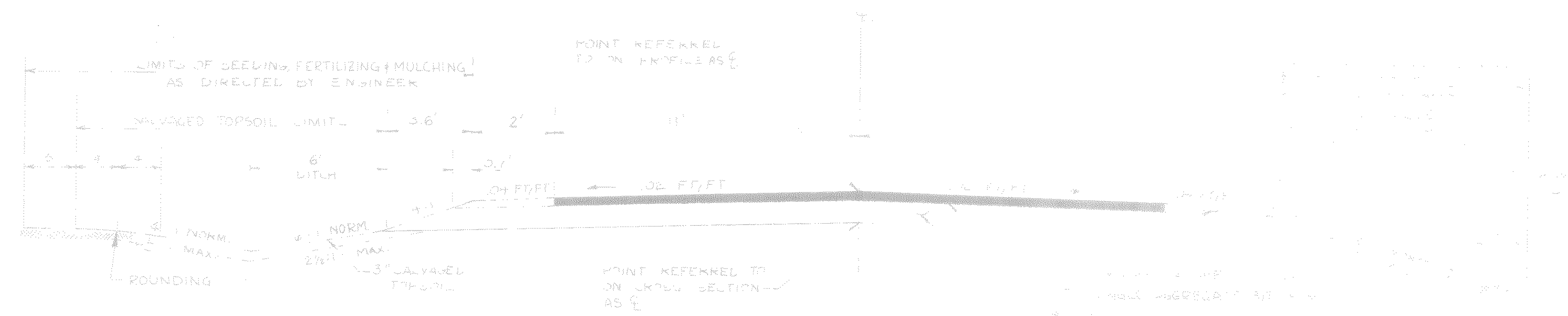
Approved: \_\_\_\_\_  
Date: \_\_\_\_\_  
Division Administrator

NOTE: ALL COORDINATES SHOWN ON THIS PLAN ARE BASED ON THE WISCONSIN COORDINATE SYSTEM CENTRAL ZONE AND ARE SCALED FROM U.S.G.S. TOPOGRAPHIC MAP, TOMAHAWK, WISCONSIN, QUADRANGLE FOR IDENTIFICATION ONLY.

ELEVATIONS SHOWN ON THIS PLAN ARE REFERENCED TO U.S.C. & G.S. DATUM.



TYPICAL SECTION  
STA 7+00.00 TO STA 8+06.97  
STA 10+94.03 TO STA 12+00.00



TYPICAL SECTION  
STA 8+06.97 TO STA 9+06.97  
STA 9+94.03 TO STA 10+94.03

GENERAL NOTES

THE LOCATIONS OF EXISTING AND PROPOSED UTILITY INSTALLATIONS AS SHOWN ON THE PLANS ARE APPROXIMATE. THERE MAY BE OTHER UTILITY INSTALLATIONS WITHIN THE PROJECT AREA THAT ARE NOT SHOWN

NO TREES OR SHRUBS ARE TO BE REMOVED UNLESS SUCH TREES OR SHRUBS HAVE FIRST BEEN INDICATED FOR REMOVAL BY THE ENGINEER IN THE FIELD.

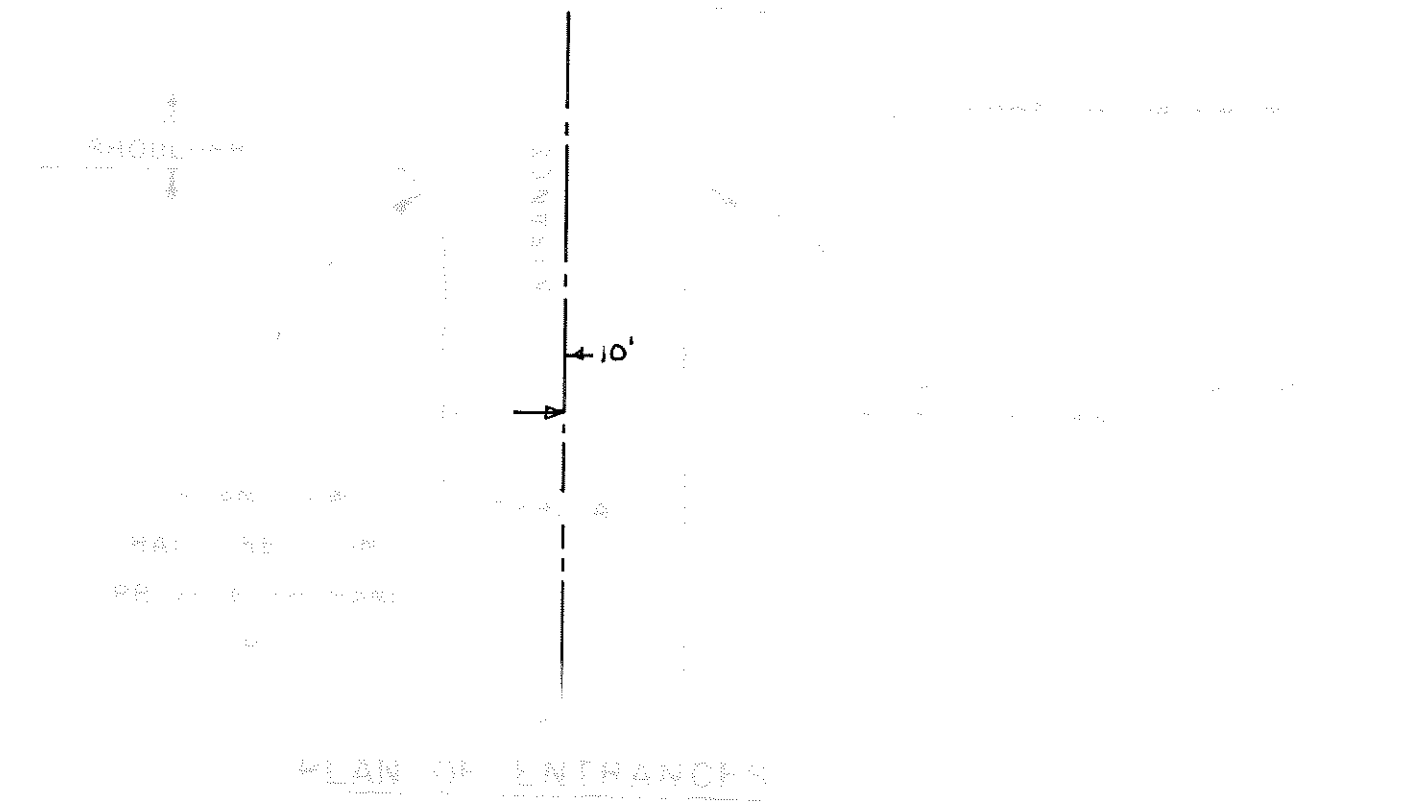
EXACT SIZE & LOCATION OF ENTRANCES SHALL BE DETERMINED BY THE ENGINEER IN THE FIELD.

WHERE THE QUANTITY OF BASE OR SURFACE COURSE IS MEASURED FOR PAYMENT BY THE CUBIC YARD, THE DEPTH OF THICKNESS OF THE COURSE AS SHOWN ON THE PLANS IS APPROXIMATE AND THE ACTUAL THICKNESS WILL DEPEND UPON THE DISTRIBUTION OF THE MATERIAL AS DIRECTED BY THE ENGINEER.

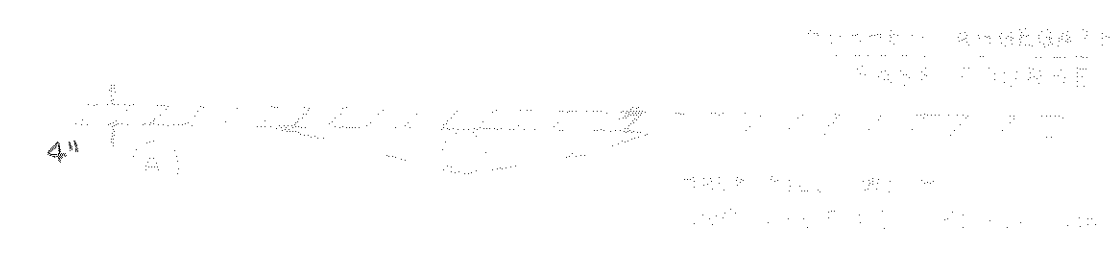
EROSION BALES TO BE PLACED AS DIRECTED BY THE ENGINEER.

SEED MIXTURE NO. 2 SHALL BE USED.

SALVAGED TOPSOIL SHALL BE PLACED TO AN APPROXIMATE DEPTH OF 3" AT TIME OF PLACING



PLAN OF ENTRANCES



PROFILE OF ENTRANCES

STANDARD ABBREVIATIONS

A.D.T.	AVERAGE DAILY TRAFFIC	N.	NORTH
AVG	AVERAGE	NORM.	NORMAL
CON	CONCRETE	NO	NUMBER
CM	CENTIMETER	PAV'T	PAVEMENT
C	CURVE	P.C.	POINT OF CURVATURE
CP	COUNTERPOINT	P.E.	PRIVATE ENTRANCE
CT	COUNTY TRUNK HIGHWAY	P.I.	POINT OF INTERSECTION
CON	CONCRETE	PK	PARKER-KALON FASTENER
CU	CUBIC YARD	P.O.T.	POINT OF TANGENT
CU YD.	CUBIC YARD	P.T.	POINT OF TANGENCY
D	DIRECTIONAL SPLIT	R.	RADIUS
D.H.V.	DESIGN HOUR VOLUME	RD.	ROAD
DIVE	DIVE	REQ'D	REQUIRED
E	ELEVATION	Rt.	RIGHT
E	ELEVATION	R/W	RIGHT OF WAY
EX	EXCAVATION	SHG.	SHRINKAGE
F.P.	FENCE POST	SL	SURVEY LINE
FOOT	FOOT	SQ.	SQUARE
INCH	INCH	STA.	STATION
YD.	YARD	SQ. YD.	SQUARE YARD
LINEAR FOOT	LINEAR FOOT	T.	TANGENT
LUMP SUM	LUMP SUM	TEL. PED.	TELEPHONE PEDESTAL
LOC	LOCATION	TYP.	TYPICAL
LEFT	LEFT	UNCL.	UNCLASSIFIED
MAX	MAXIMUM	V.	DESIGN SPEED
MILE	MILE	V.C.	VERTICAL CURVE
MILES PER HOUR	MILES PER HOUR	VAR	VARIABLE

UTILITIES

WISCONSIN PUBLIC SERVICE CORP  
400 EAST 2ND ST  
MERRILL, WI 54450  
ATTENTION MR. D. W. KOEL  
TELEPHONE (715) 536-9541

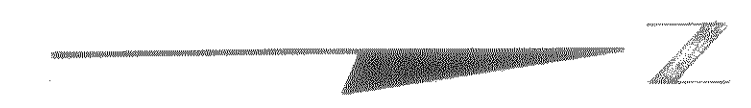
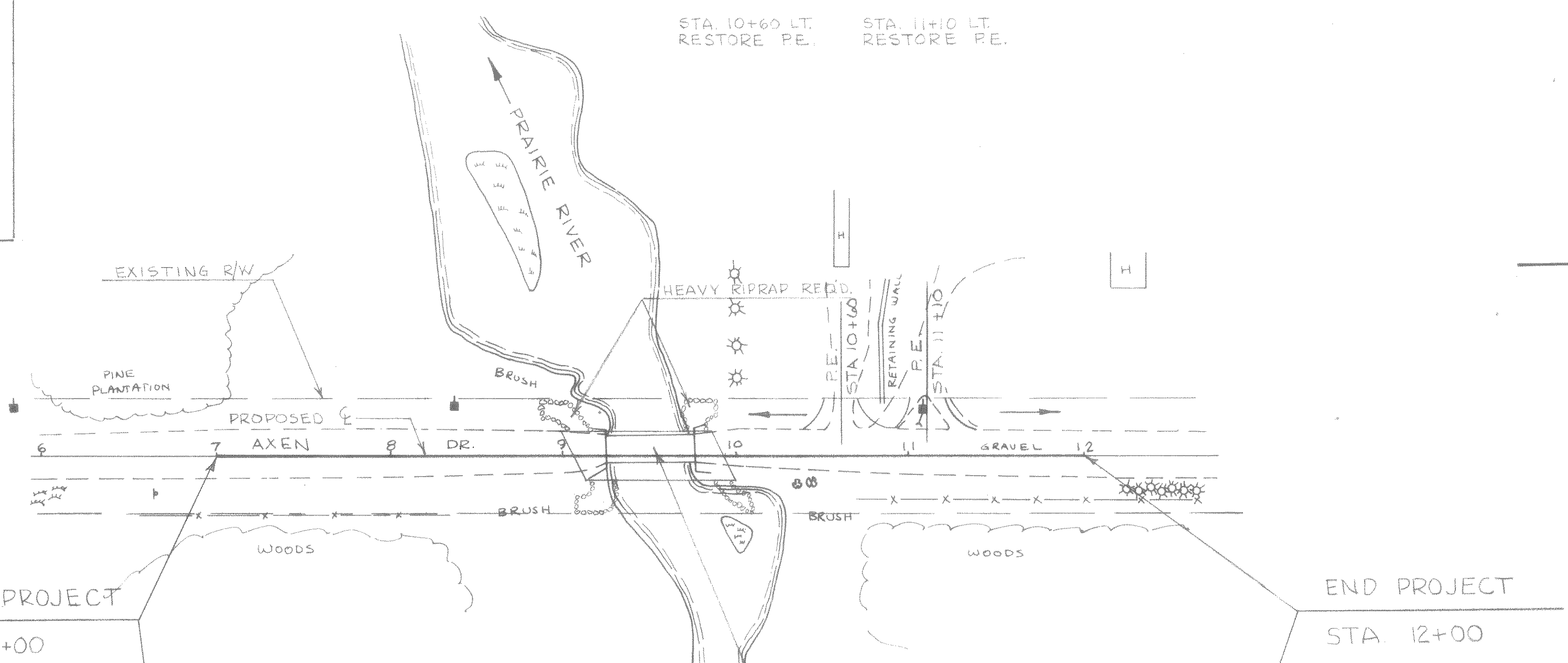
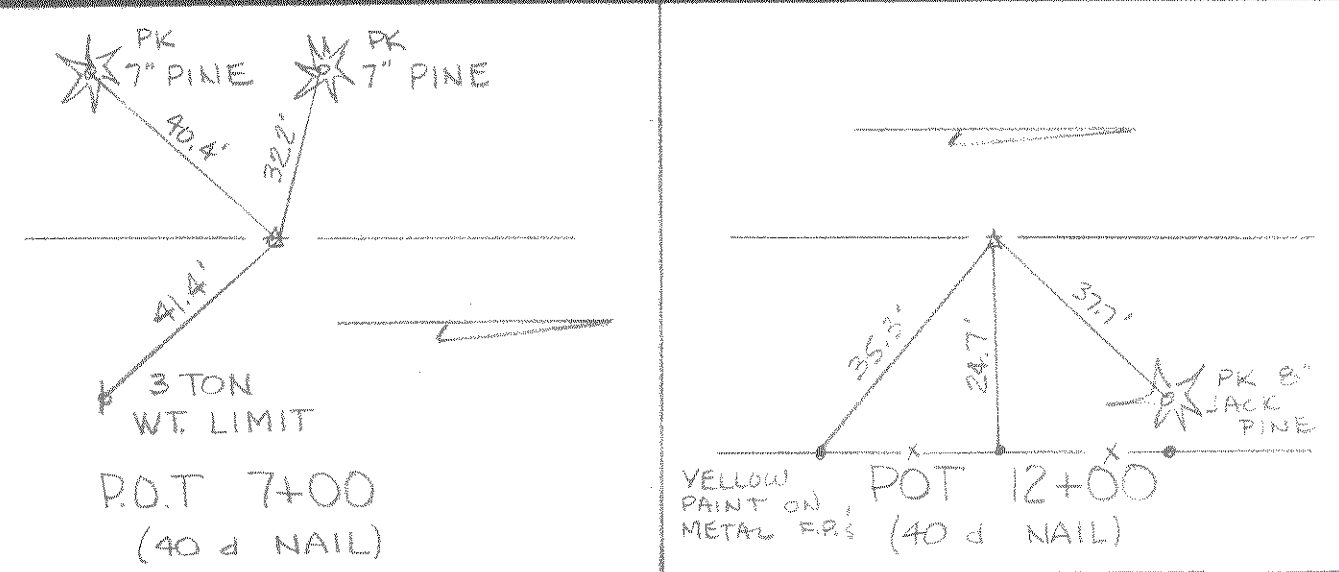
GILSON TELEPHONE CO  
HAWKINS, WI 54530  
ATTENTION MR. WILMER AHRENHOLZ  
TELEPHONE (715) 585-6301

APPLICABLE STANDARD DETAIL DRAWINGS

- 8E-1 SPECIAL INSTALLATION OF EROSION BALES
- 12A3-A NAME PLATES (STRUCTURED)
- 14B2-5A,B CLASS "A" STEEL PLATE BEAM GUARD
- 14B2-5C STEEL PLATE BEAM MEDIAN GUARD, SPECIAL ANCHORAGES
- 15C1-7 CONSTRUCTION BARRICADES AND STANDARD SIGNS



STATE PROJECT NUMBER	SHEET NO.
9859-2-70	5.0



**LEGEND**  
 — GUY WIRE  
 X CONIFEROUS TREE  
 ○ DECIDUOUS TREE  
 △ SIGN

END PROJECT  
 STA. 12+00

BEGIN PROJECT  
 STA. 7+00

STA. 9+50  
 REMOVE EXIST. STEEL  
 PONY TRUSS STRUCTURE (P-68)  
 & CONC. ABUTMENTS  
 AVG. LENGTH 54 FT.  
 AVG. WIDTH 16 FT.

**BENCH MARKS**

STA.	DESCRIPTION	ELEV.
9+76	CHISELED + W/YELLOW PAINT N.E. ABUTMENT 8' RT.	1424.10

