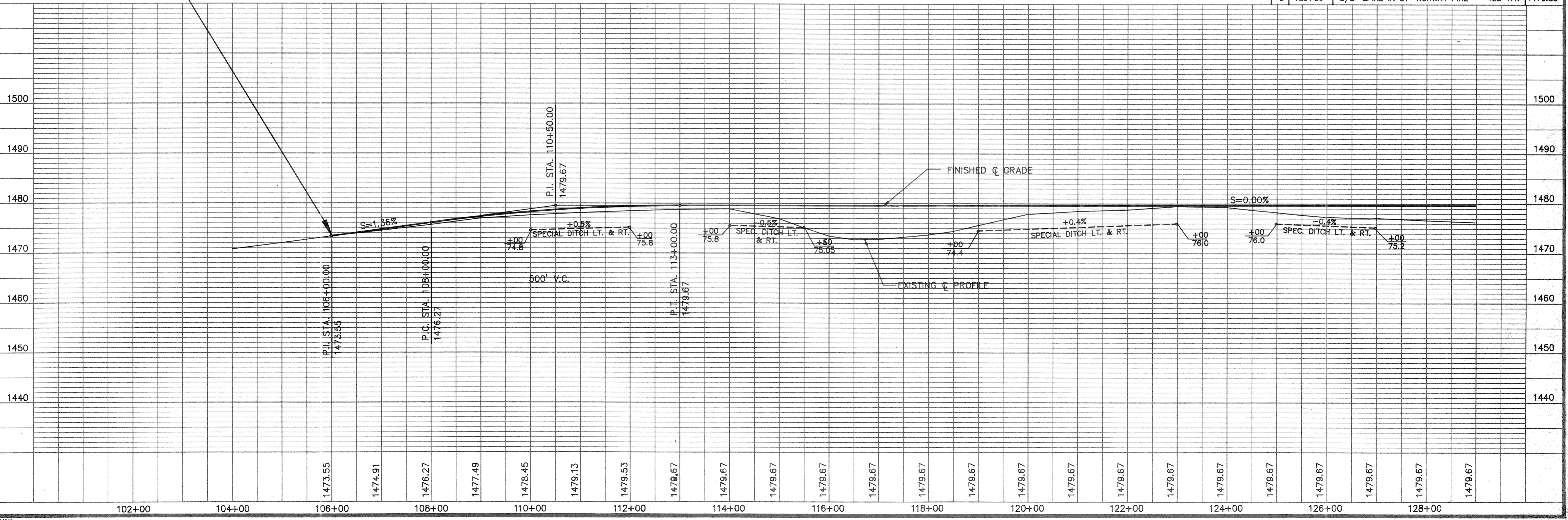
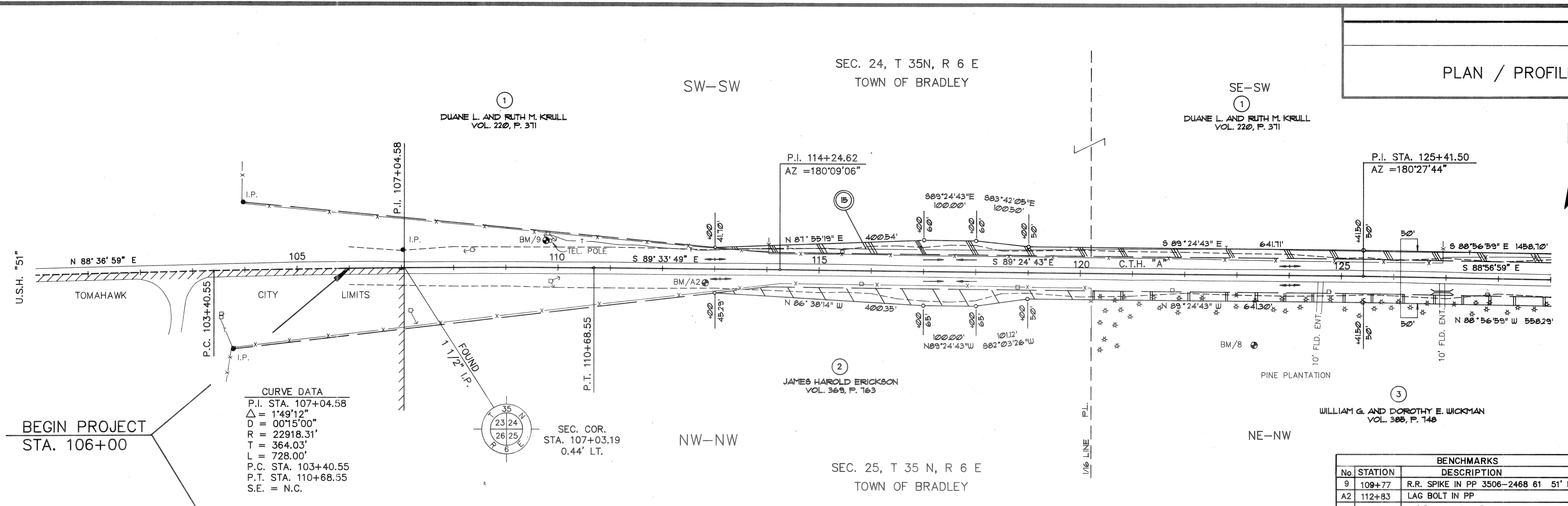


PLAN / PROFILE

SEC. 24, T 35N, R 6 E
TOWN OF BRADLEY

SEC. 25, T 35 N, R 6 E
TOWN OF BRADLEY

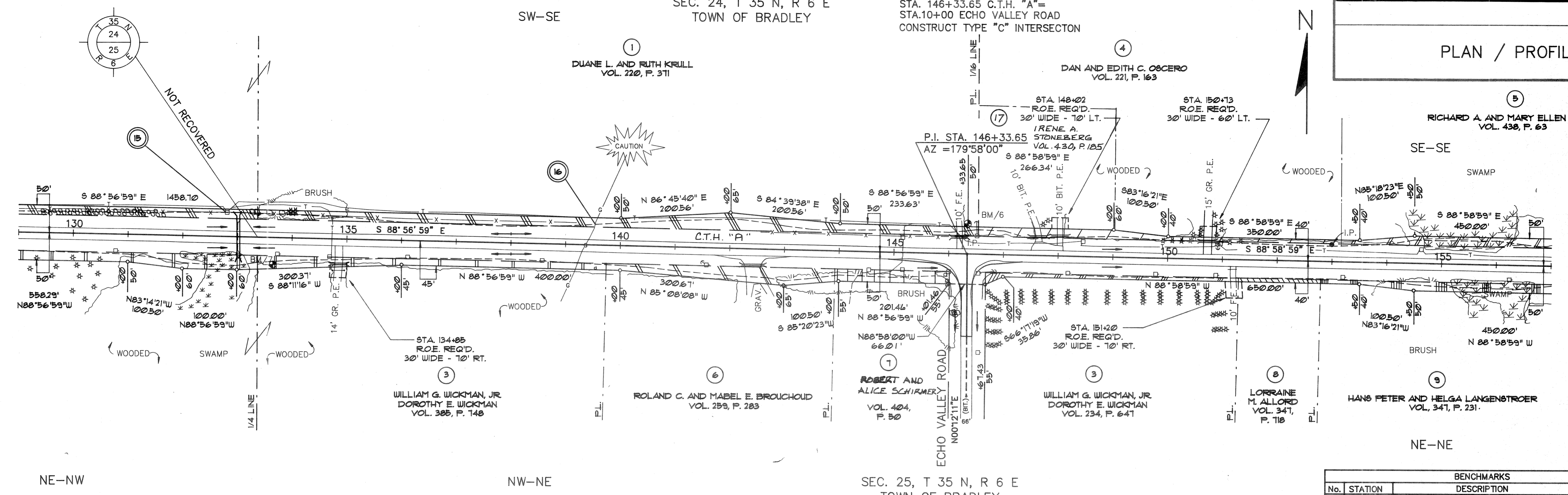


DRAWING NAME:
LAYERS OFF:
511361

PLAN / PROFILE

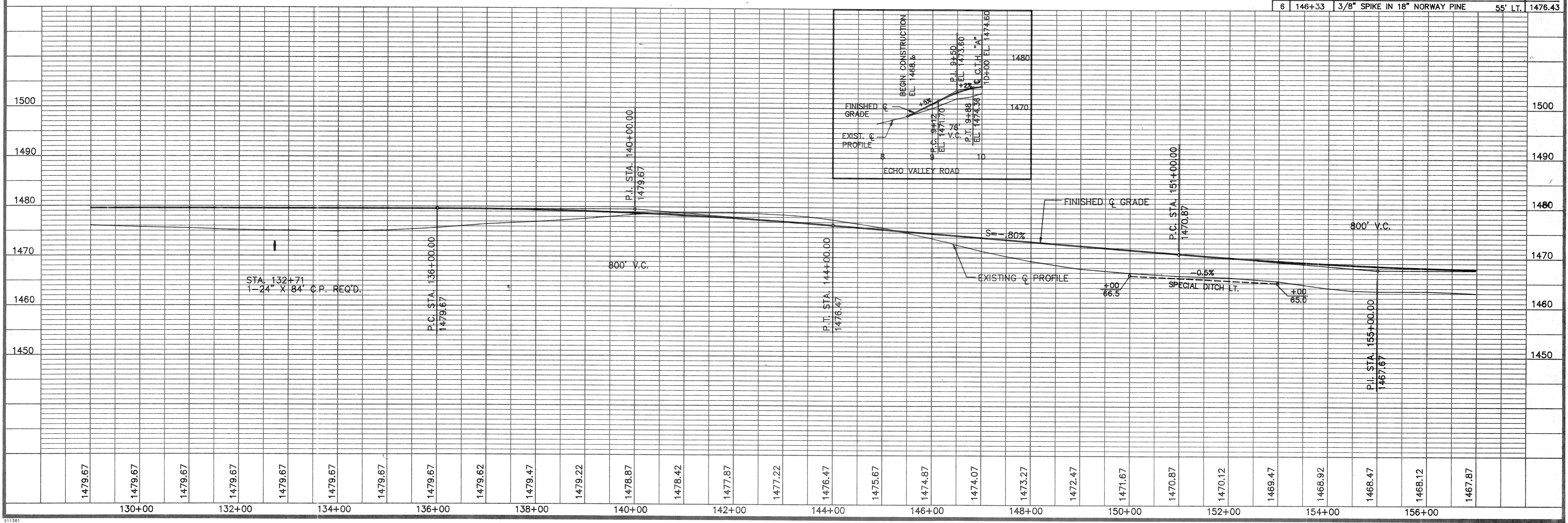
SEC. 24, T 35 N, R 6 E
TOWN OF BRADLEY

STA. 146+33.65 C.T.H. "A"
STA. 10+00 ECHO VALLEY ROAD
CONSTRUCT TYPE "C" INTERSECTION



BENCHMARKS			
No.	STATION	DESCRIPTION	ELEV.
7	133+66	3/8" SPIKE IN TRIPLE 12" OAK	49' RT. 1473.93
6	146+33	3/8" SPIKE IN 18" NORWAY PINE	55' LT. 1476.43

SEC. 25, T 35 N, R 6 E
TOWN OF BRADLEY

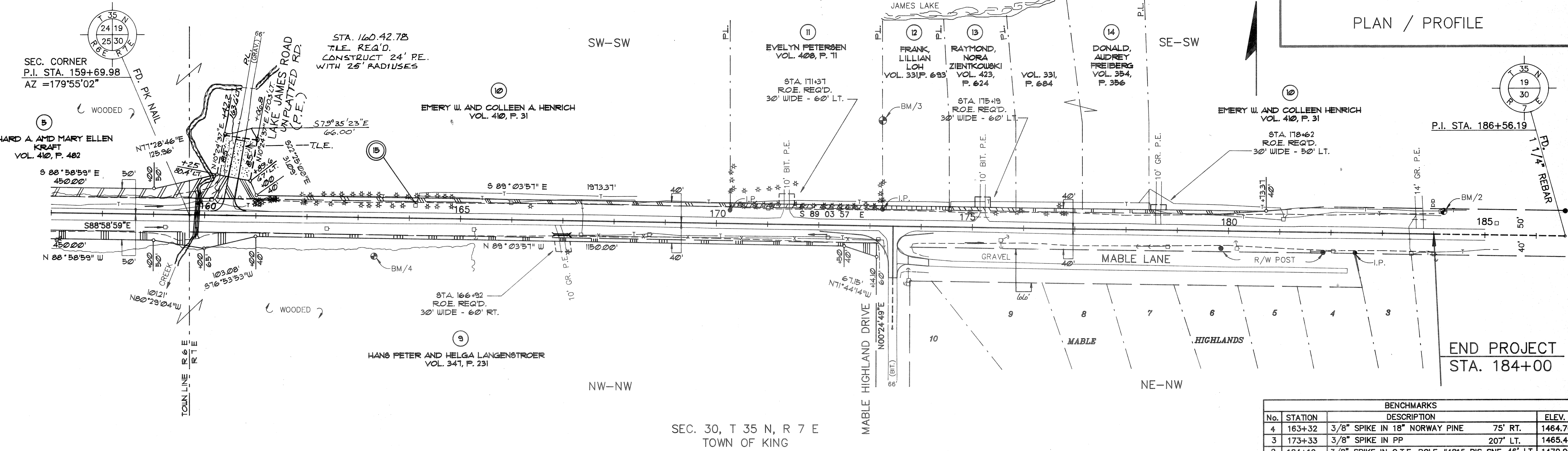


DRAWING NAME:
LAYERS OFF:
SHEET JOB #
511381

PLAN / PROFILE

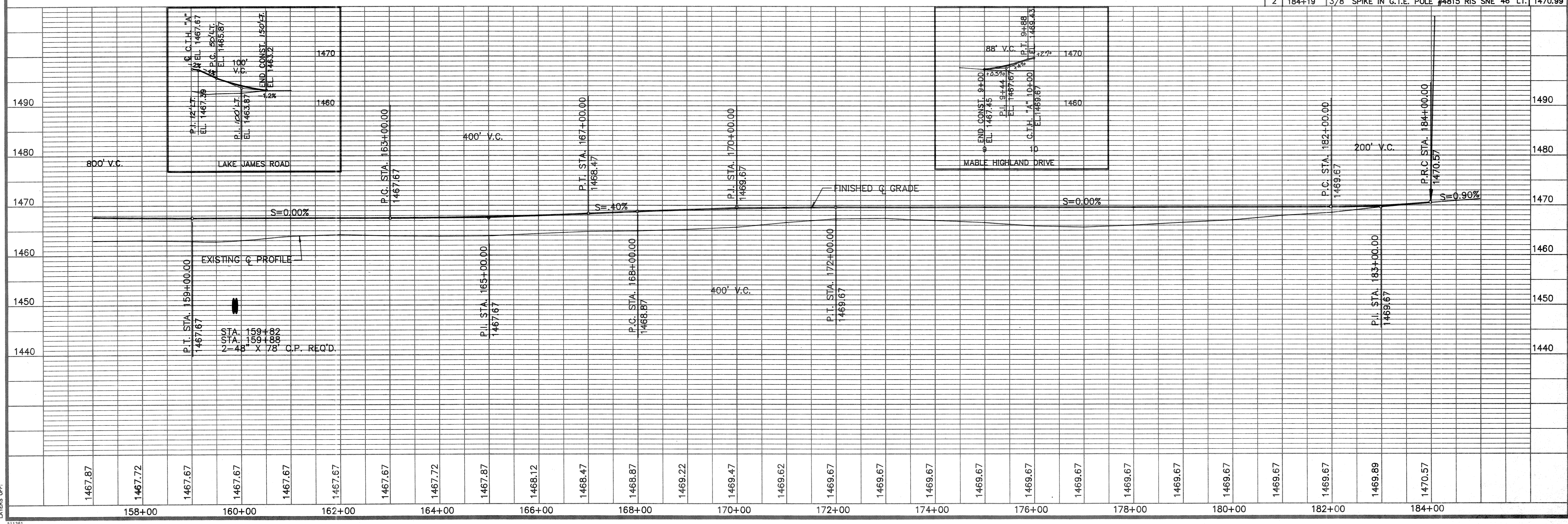
SEC. 19, T 35 N, R 7 E
TOWN OF KING

STA. 173+44.96 C.T.H. "A"
STA. 10+00 MABLE HIGHLAND DRIVE
CONSTRUCT TYPE "C" INTERSECTION



SEC. 30, T 35 N, R 7 E
TOWN OF KING

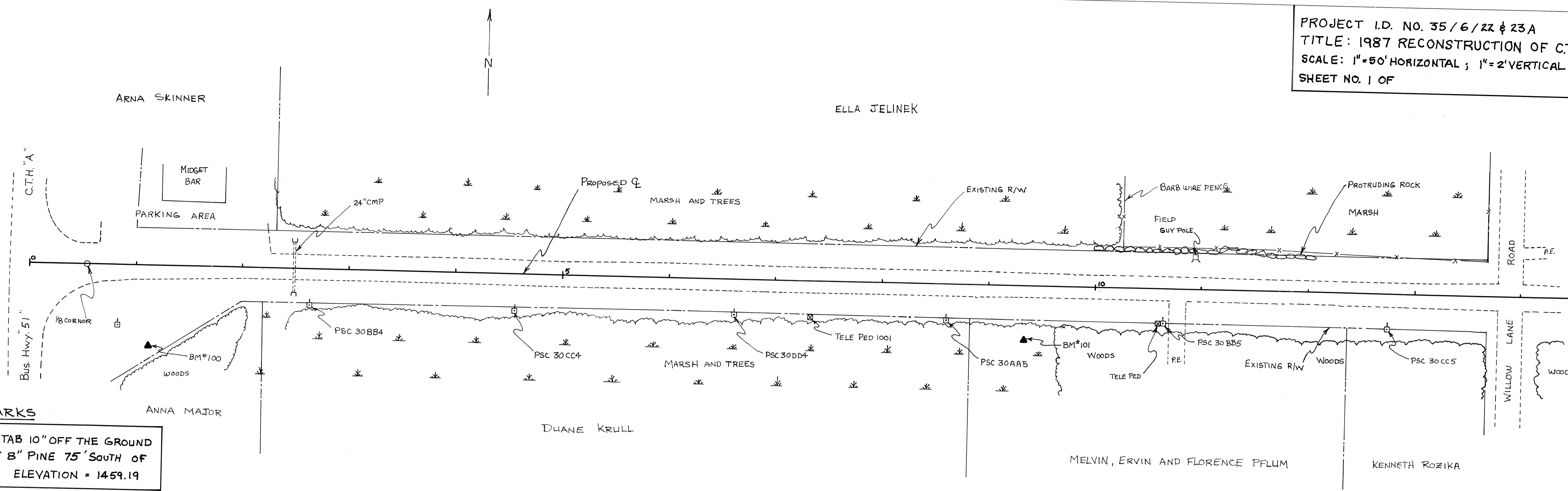
BENCHMARKS				
No.	STATION	DESCRIPTION		ELEV.
4	163+32	3/8" SPIKE IN 18" NORWAY PINE	75' RT.	1464.70
3	173+33	3/8" SPIKE IN PP	207' LT.	1465.41
2	184+19	3/8" SPIKE IN G.T.E. POLE #4815 RIS SNE	46' LT.	1470.99



DRAWING NAME: LAYERS OFF: SEE JOB #

PROJECT I.D. NO. 35/6/22 & 23A
 TITLE: 1987 RECONSTRUCTION OF C.T.H. "A"
 SCALE: 1"=50' HORIZONTAL ; 1"=2' VERTICAL
 SHEET NO. 1 OF

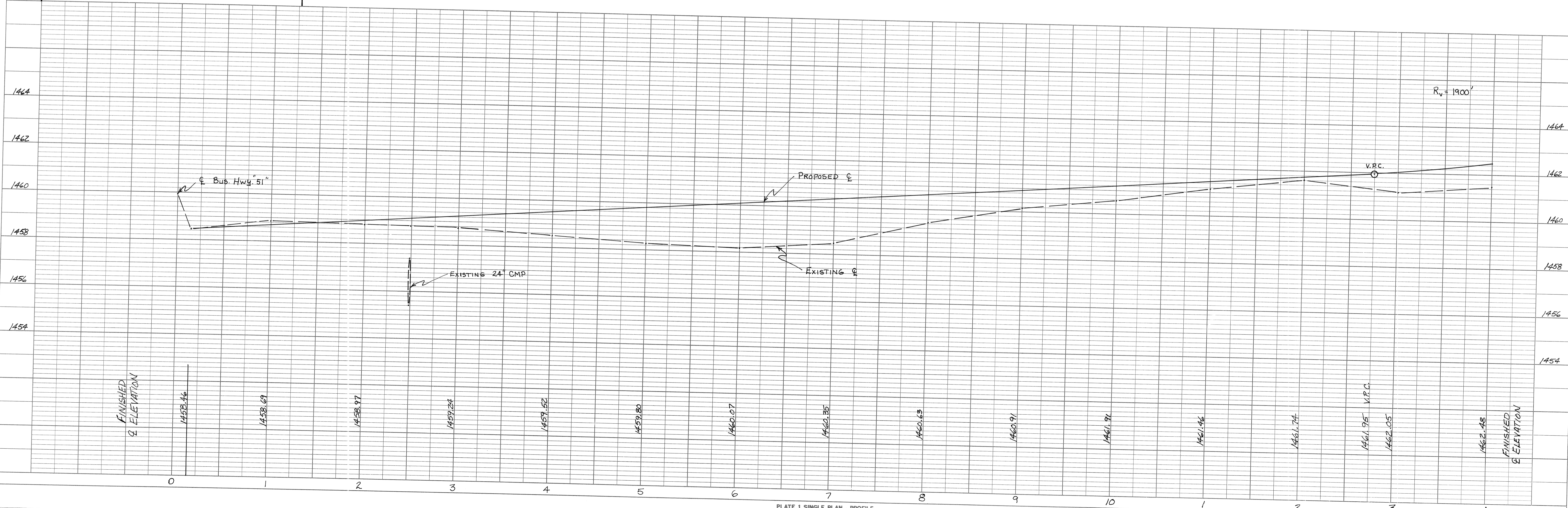
PLAN	SURVEYED	DATE
	PLOTTED	
NOTE BOOK NO.	CHECKED	
	BY	



BENCHMARKS

100	4" SPIKE W/ORANGE TAB 10" OFF THE GROUND ON NORTH FACE OF 8" PINE 75' SOUTH OF Q AT STATION 1+12. ELEVATION = 1459.19
101	4" SPIKE W/ORANGE TAB 12" OFF THE GROUND ON NORTH FACE OF 10" WHITE BIRCH 50' SOUTH OF Q AT STATION 9+33. ELEVATION = 1459.76

PROFILE	SURVEYED	DATE
	PLOTTED	
NOTE BOOK NO.	CHECKED	
	BY	

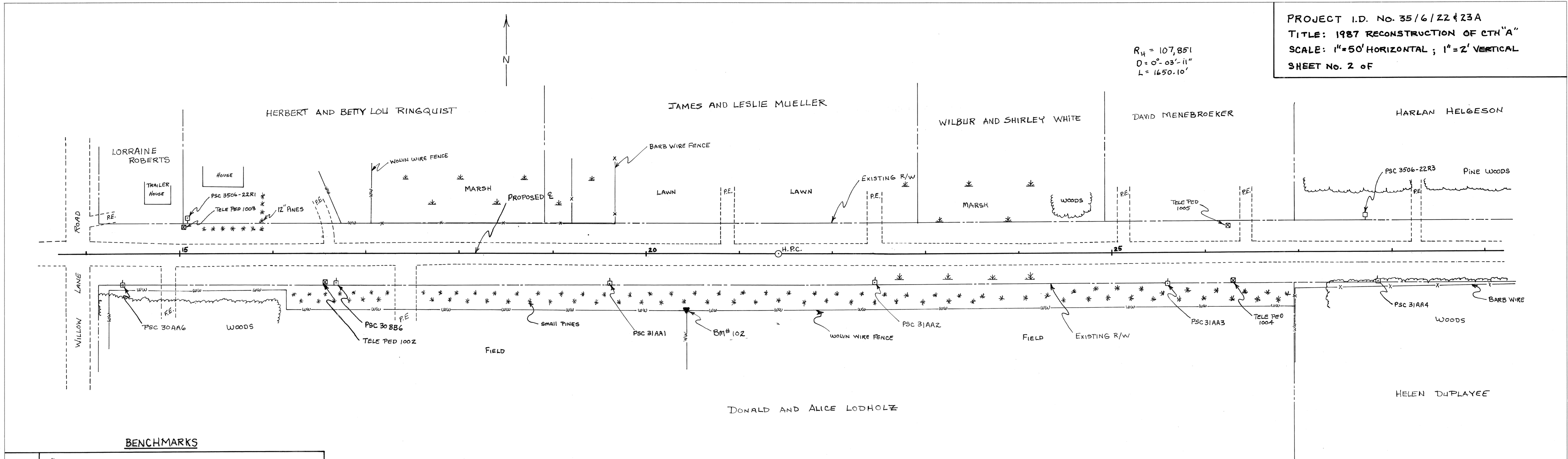


PROJECT I.D. No. 35/6/22 & 23A
 TITLE: 1987 RECONSTRUCTION OF CTH "A"
 SCALE: 1"=50' HORIZONTAL ; 1"=2' VERTICAL
 SHEET No. 2 OF

$R_H = 107,851$
 $D = 0^\circ - 03' - 11"$
 $L = 1650.10'$

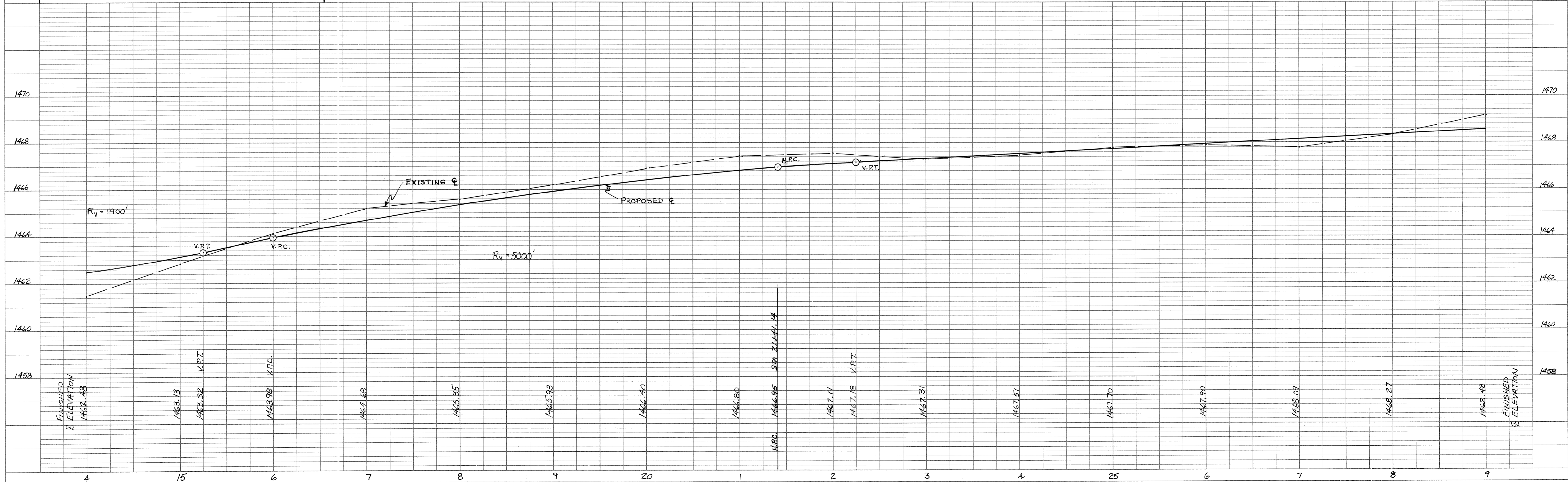
PLAN
 SURVEYED, PLOTTED, ALIGNED, CHECKED, RT. OF WAY CHECKED, NOTE BOOK NO.

PROFILE
 SURVEYED, GRADES CHECKED, B.M.'S NOTED, STRUCTURE NOTATIONS CHECKED, NOTE BOOK NO.



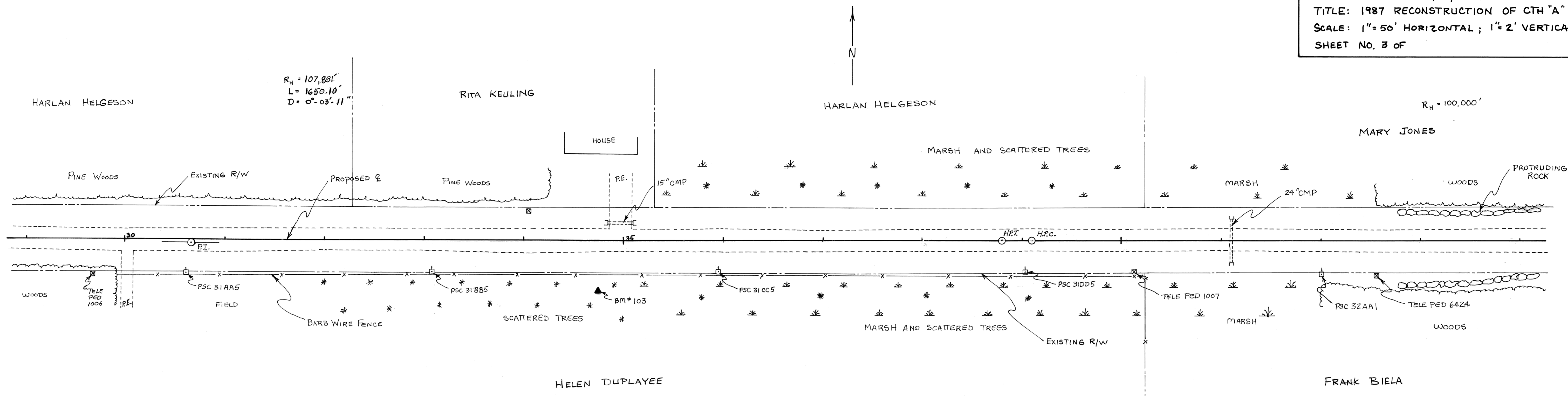
BENCHMARKS

102 4" SPIKE W/ORANGE TAB 10" OFF THE GROUND ON NORTH FACE OF WOLVEN WIRE FENCE POST 60' SOUTH OF ϕ AT STATION 20+44. ELEVATION = 1470.21



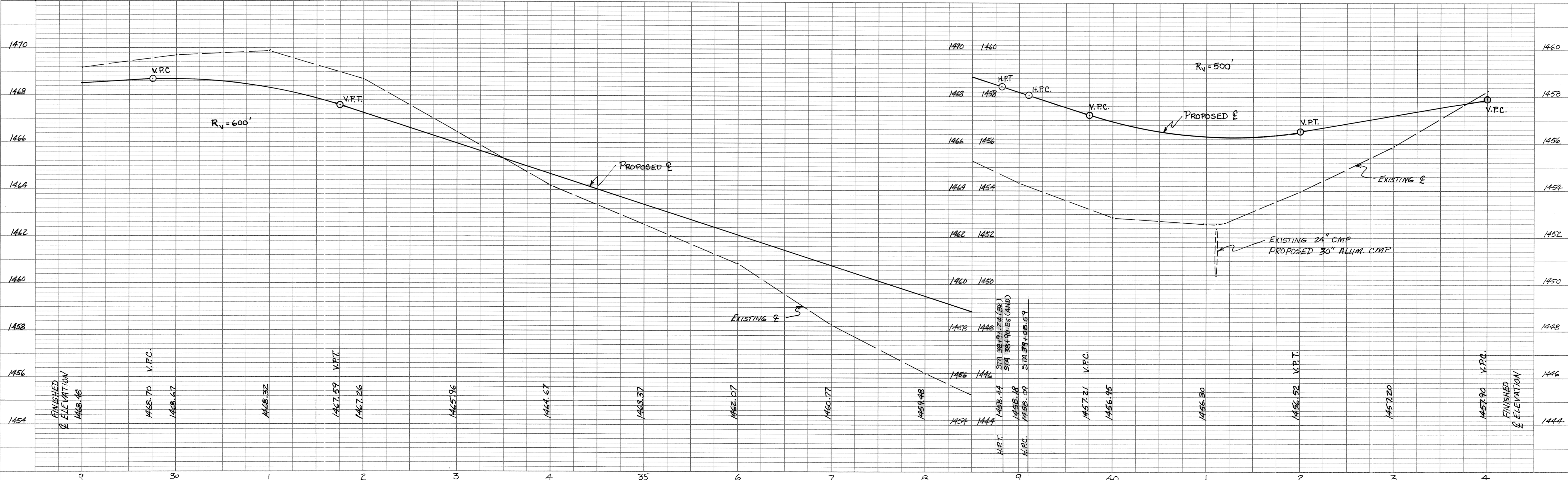
PLAN	SURVEYED	DATE
	PLOTTED	
	CHECKED	
	RT. OF WAY CHECKED	
	NOTE BOOK NO.	

PROFILE	SURVEYED	DATE
	PLOTTED	
	CHECKED	
	STRUCTURE NOTATIONS CHKD	
	NOTE BOOK NO.	



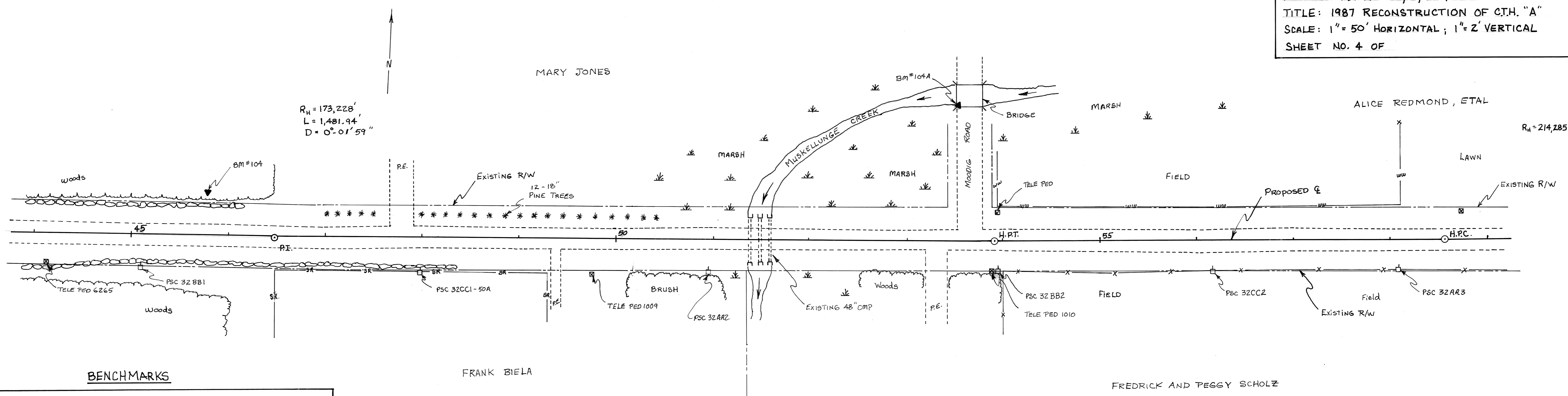
BENCHMARKS

103 4" SPIKE W/ORANGE TAB 12" OFF THE GROUND ON NORTH FACE OF 8" BALSAM 47' SOUTH OF E AT STATION 34+74. ELEVATION = 1462.64



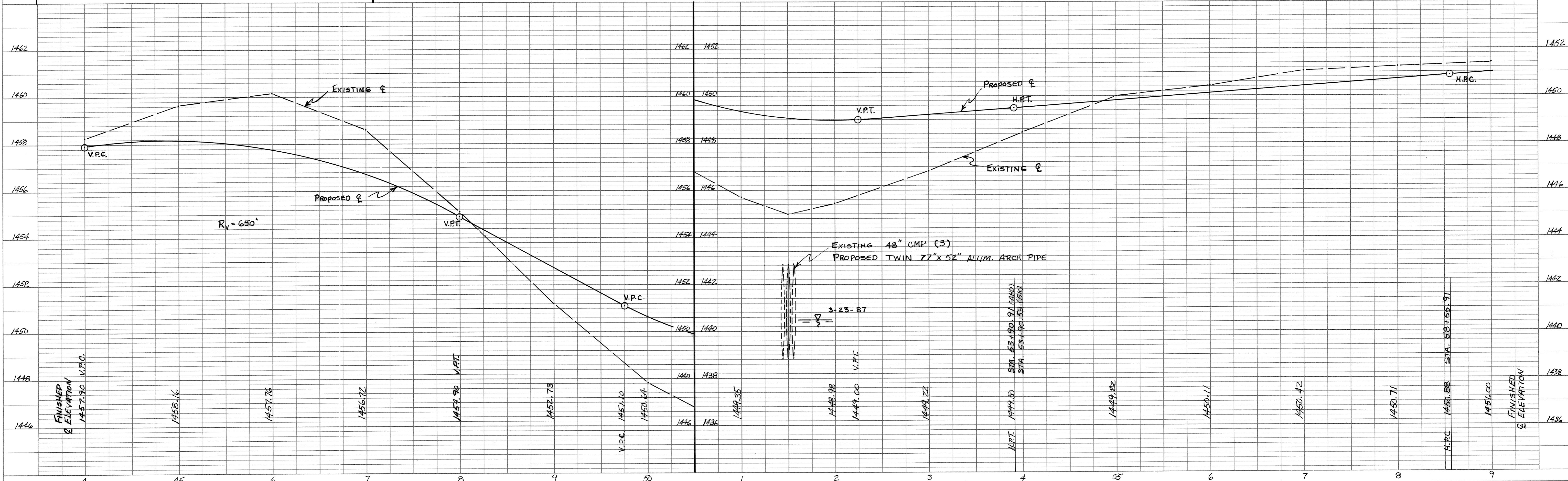
DATE	
BY	
SURVEYED	
PLOTTED	
CHECKED	
DATE	
BY	
NOTE BOOK NO.	

DATE	
BY	
SURVEYED	
GRADES CHECKED	
STRUCTURE NOTATIONS CHECKED	
DATE	
BY	
NOTE BOOK NO.	



BENCHMARKS

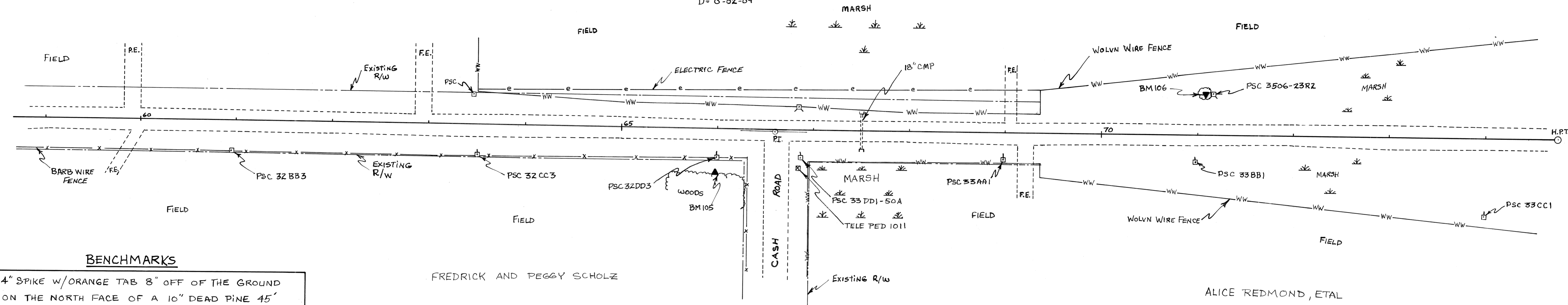
104	4" SPIKE W/ORANGE TAB 8" OFF OF THE GROUND ON SOUTH FACE OF A 6" POPLAR 50' NORTH OF C AT STATION 45+74. ELEVATION = 1462.23
104A	ORANGE PAINTED "X" 6" OFF OF THE PAVEMENT ON SOUTHWEST TOP OF CURB OF CONC. WALL OF BRIDGE 131' NORTH OF C AT STA 53+52. ELEV. = 1445.89



PROJECT I.D. NO. 35/6/22 & 23 A
 TITLE: 1987 RECONSTRUCTION OF C.T.H. "A"
 SCALE: 1" = 50' HORIZONTAL ; 1" = 2' VERTICAL
 SHEET NO. 5 OF

ALICE REDMOND, ETAL

$R_H = 159,963'$
 $L = 1621.41'$
 $D = 0^{\circ}02'09''$

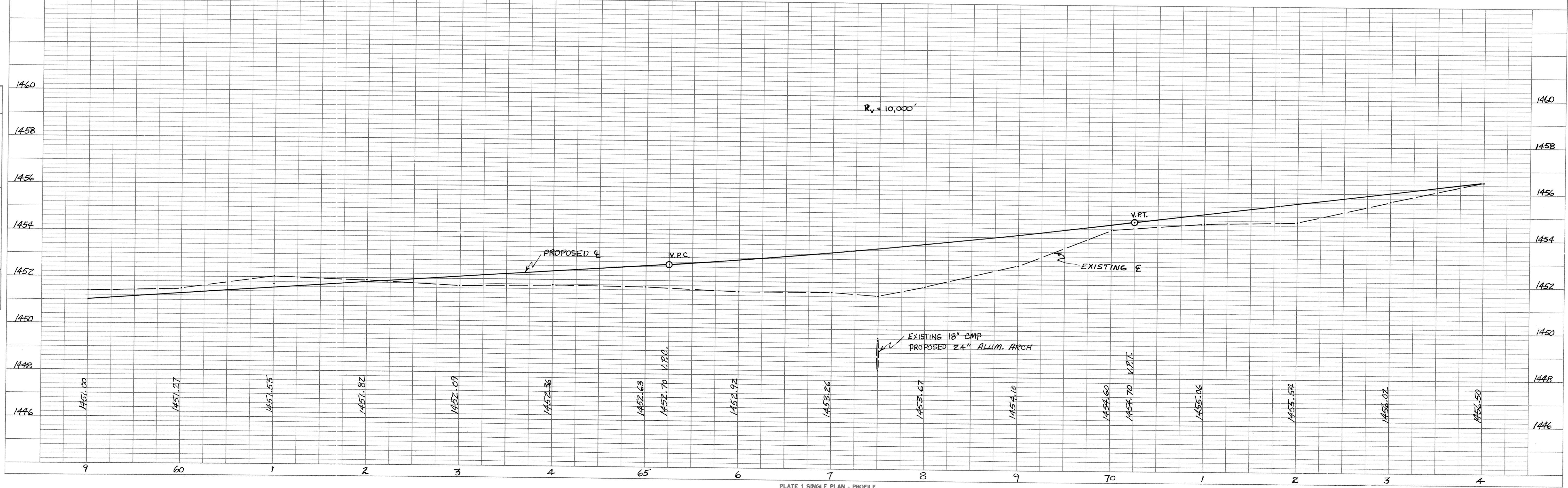


BENCHMARKS

105	4" SPIKE W/ORANGE TAB 8" OFF OF THE GROUND ON THE NORTH FACE OF A 10" DEAD PINE 45' SOUTH OF ϕ AT STATION 66+00. ELEVATION = 1451.95
106	4" SPIKE W/ORANGE TAB 10" OFF OF THE GROUND ON THE SOUTH FACE OF A 18" PINE 43' NORTH OF ϕ AT STATION 71+09. ELEVATION = 1453.62

FREDRICK AND PEGGY SCHOLZ

ALICE REDMOND, ETAL



PLAN

DATE	
BY	
SURVEYED	
PLOTTED	
ALIGNED CHECKED	
RT. OF WAY CHECKED	
NOTE BOOK NO.	

PROFILE

DATE	
BY	
SURVEYED	
PLOTTED	
CHECKED	
B.M. NOTED	
STRUCTURE NOTATIONS CHKD	
NOTE BOOK NO.	