

STATE PROJECT	FEDERAL PROJECT	
	PROJECT	CONTRACT
9856-1-70	OS 3599 (I)	I

STATE OF WISCONSIN
DEPARTMENT OF TRANSPORTATION
DIVISION OF HIGHWAYS

PLAN AND PROFILE OF PROPOSED

MERRILL - U.S.H. 51
(MILL ST. BRIDGE AND APPROACHES)
LINCOLN COUNTY

STATE PROJECT NUMBER
9856-1-70

Scales
Plan 1 in. = 50'
Profile Hor. 1 in. = 50' Vert. 1 in. = 5'
Cross Sections Hor. 1 in. = 10' Vert. 1 in. = 2'

Index of Sheets

Sheet No.	Title
1	Title
2	Typical Cross Sections
2	Estimate of Quantities
—	Miscellaneous Quantities
—	Right of Way Plat
3	Plan and Profile
4	Standard Details
5-5.8	Structure Plans
—	Computer Earthwork Data
6	Cross Sections

TOTAL SHEETS = 14

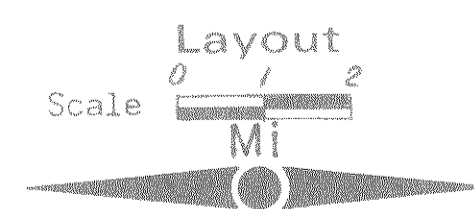
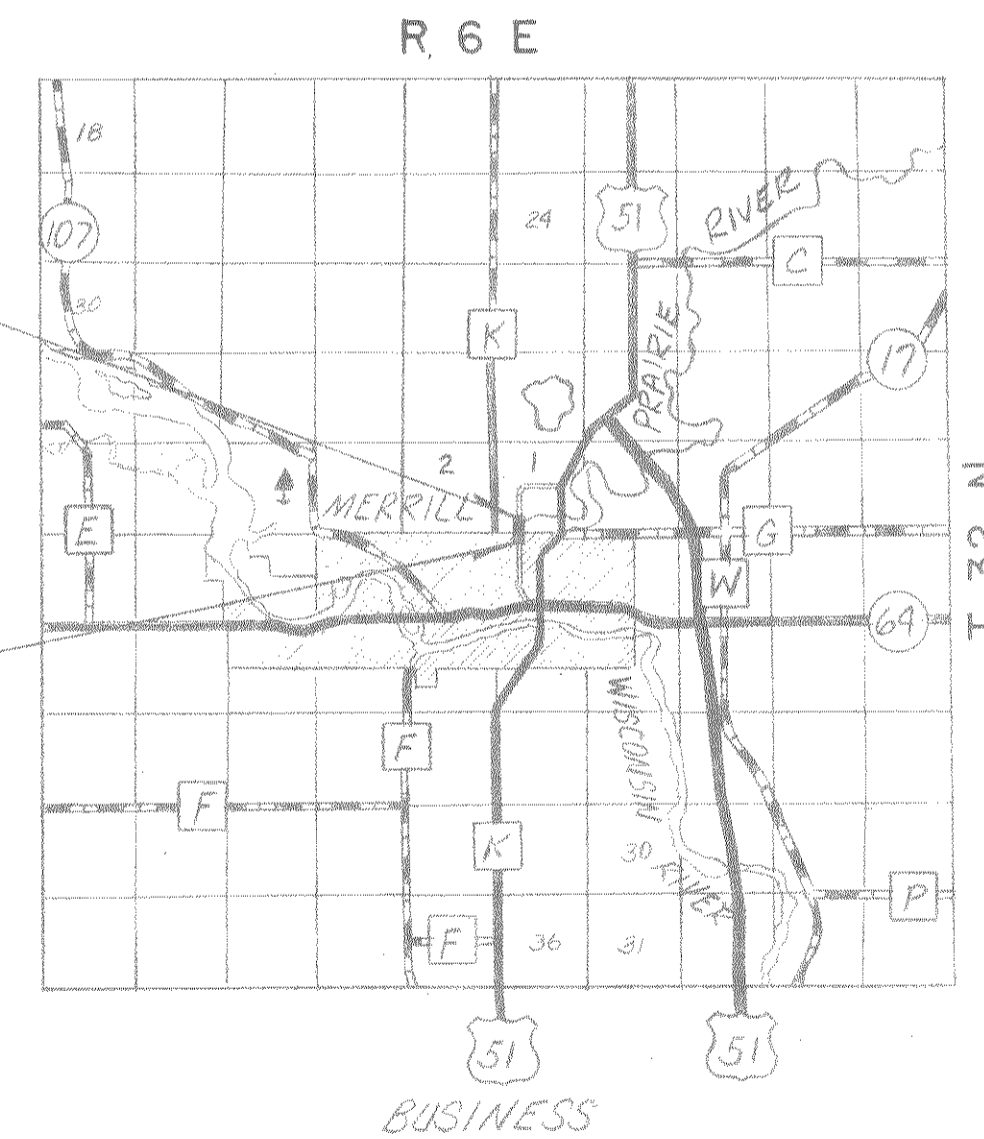


Design Designation

A.D.T.	=	230
A.D.T.	=	400
D.H.V.	=	60
D.	=	40 %
T.	=	10 %
V.	=	40 M.P.H.

END PROJECT 9856-1-70
STA. 13+50
APPROX. 342' NORTH AND 1320' EAST OF SW COR. SEC. 1, T-31-N, R-6-E.

BEGIN PROJECT 9856-1-70
STA. 8+00
APPROX. 208' SOUTH AND 1320' EAST OF SW COR. SEC. 1, T-31-N, R-6-E.



Total Net Length of Centerline = .104 Mi.

Conventional Signs

County Line	— — — — —	Culverts in Place	— — — — —
Township or Range Line	— — — — —	Culverts Required	— — — — —
Section Line	— — — — —	Drop Inlet	— — — — —
New Right of Way Line	— — — — —	Power Pole	— — — — —
Present Right of Way Line	— — — — —	Telephone or Telegraph Pole	— — — — —
Wire Fence	— — — — —	Right of Way Markers	— — — — —
Corporate or City Limits	— — — — —	Reference Stake for Hubs Only	— — — — —
Property Line	— — — — —	Marsh	— — — — —
Traveled Way or P.E.	— — — — —	Hedge	— — — — —
Railroads	— — — — —	Trees	— — — — —
Base or Survey Line	— — — — —	Ground Elevation	— — — — —
Caution Symbol (combustible fluids under pressure)	— — — — —	Grade Elevation	— — — — —

PLANS PREPARED BY
MEAD AND HUNT INC.
CONSULTING ENGINEERS
MADISON, WISCONSIN

STATE OF WISCONSIN
DEPARTMENT OF TRANSPORTATION
DIVISION OF HIGHWAYS

Surveyor G.R.K. District Checker _____
Designer G.R.K. C.O. Checker _____

Correct: _____
Date _____ District Engineer _____

Recommended for Approval:
Date _____ Chief of Facilities Development _____

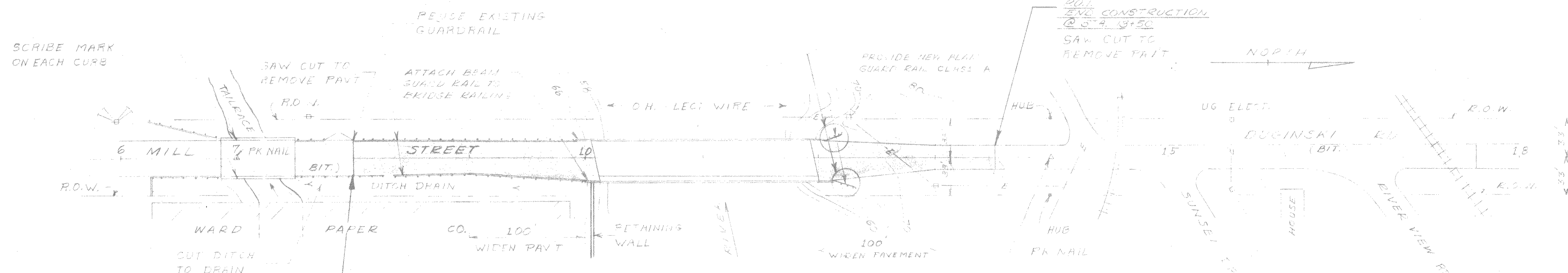
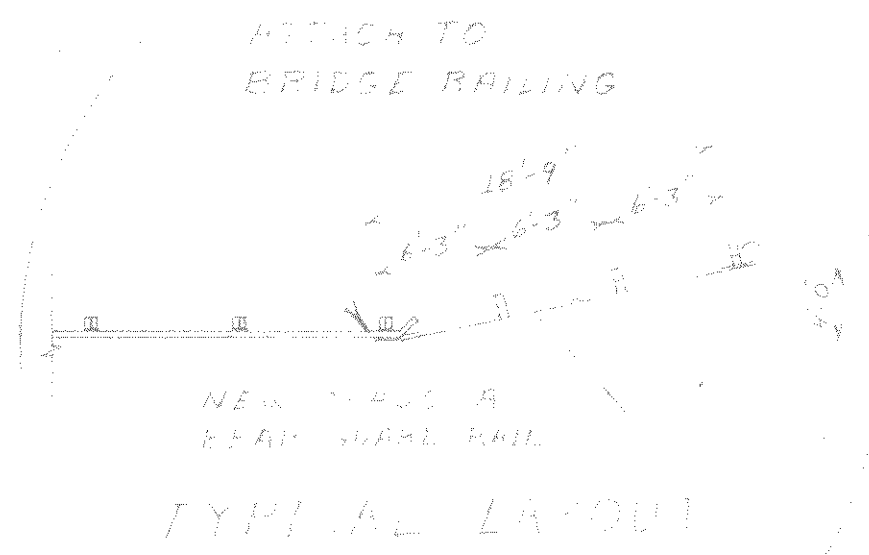
Approved: _____
Date _____ State Highway Engineer _____

U.S. DEPARTMENT OF TRANSPORTATION
FEDERAL HIGHWAY ADMINISTRATION
REGION 5 WISCONSIN DIVISION

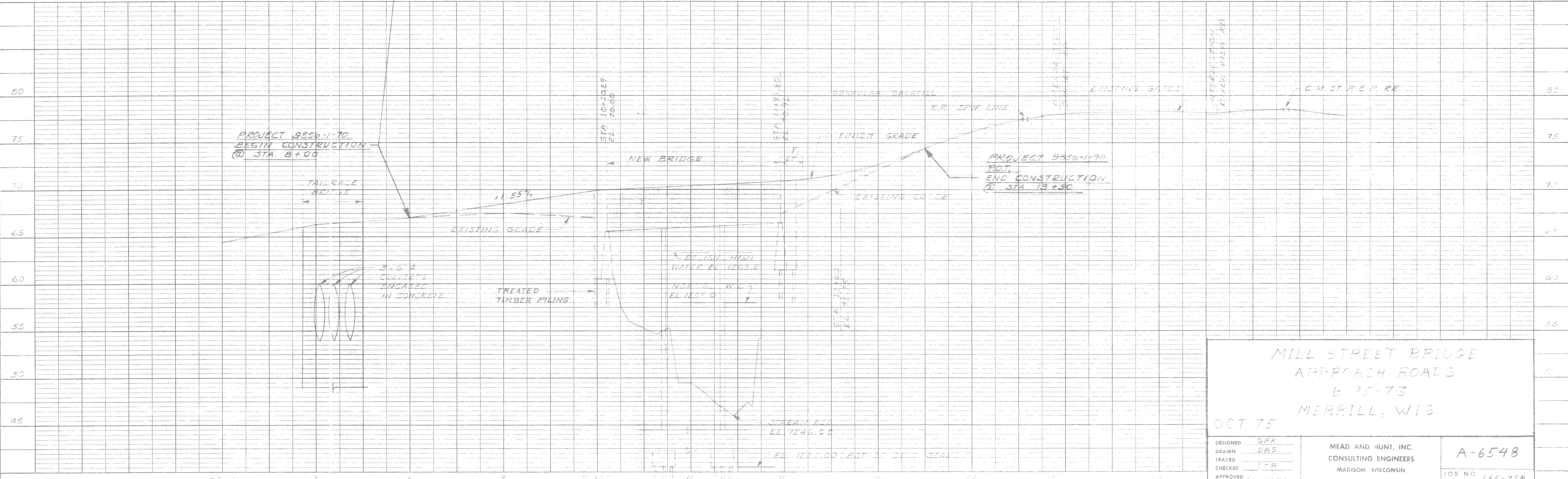
Approved: _____
Date _____ Division Engineer _____

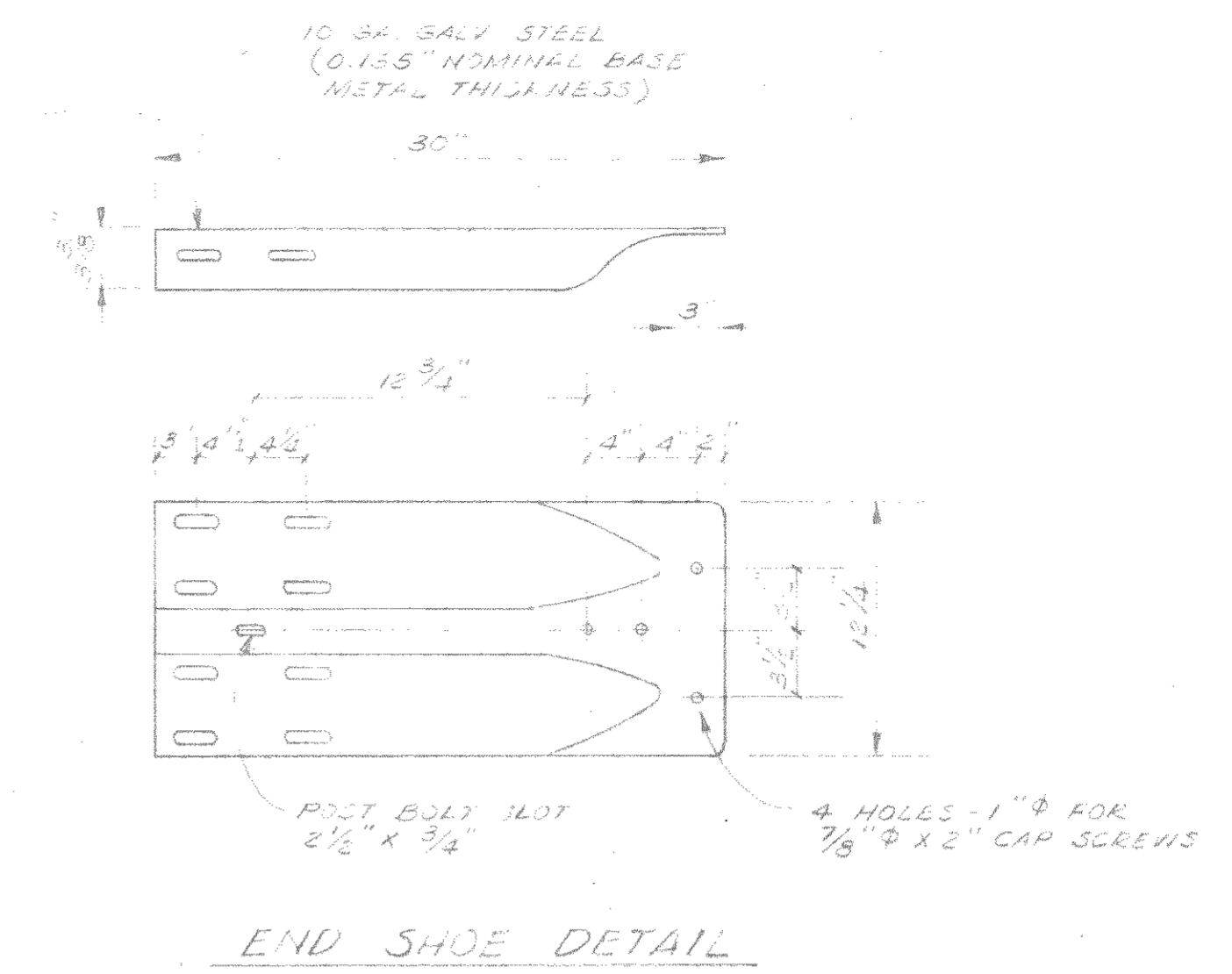
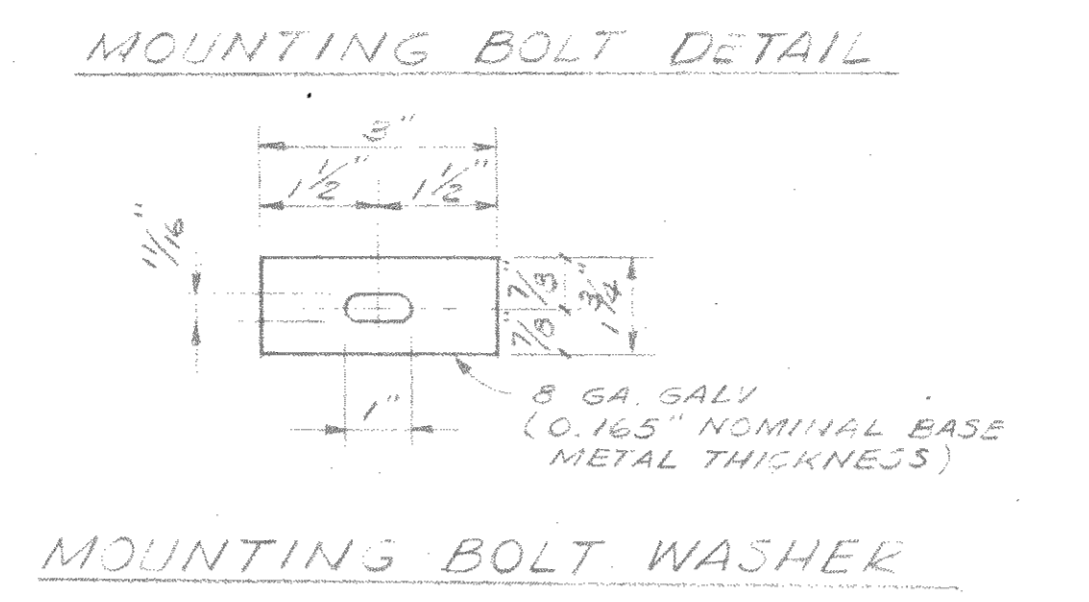
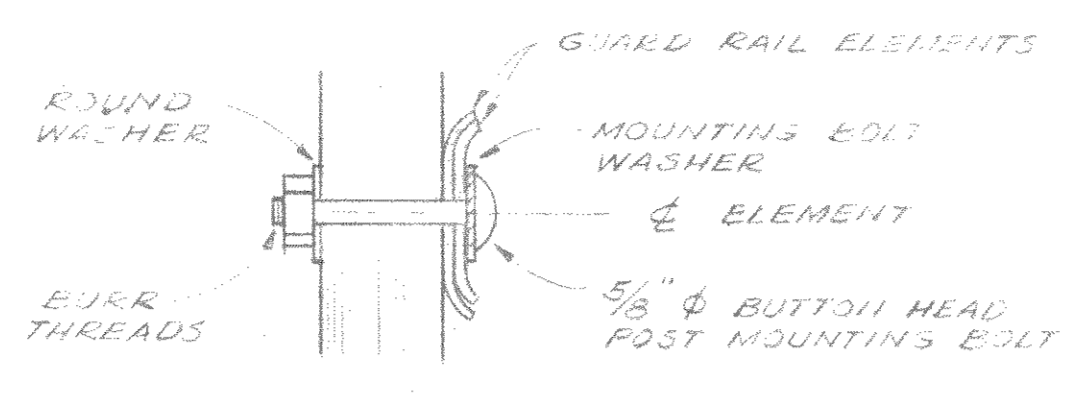
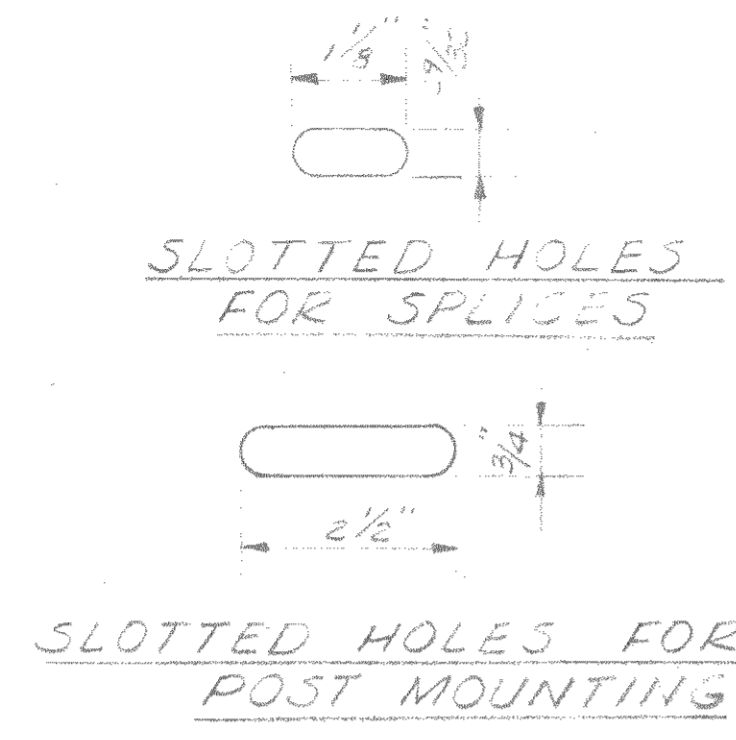
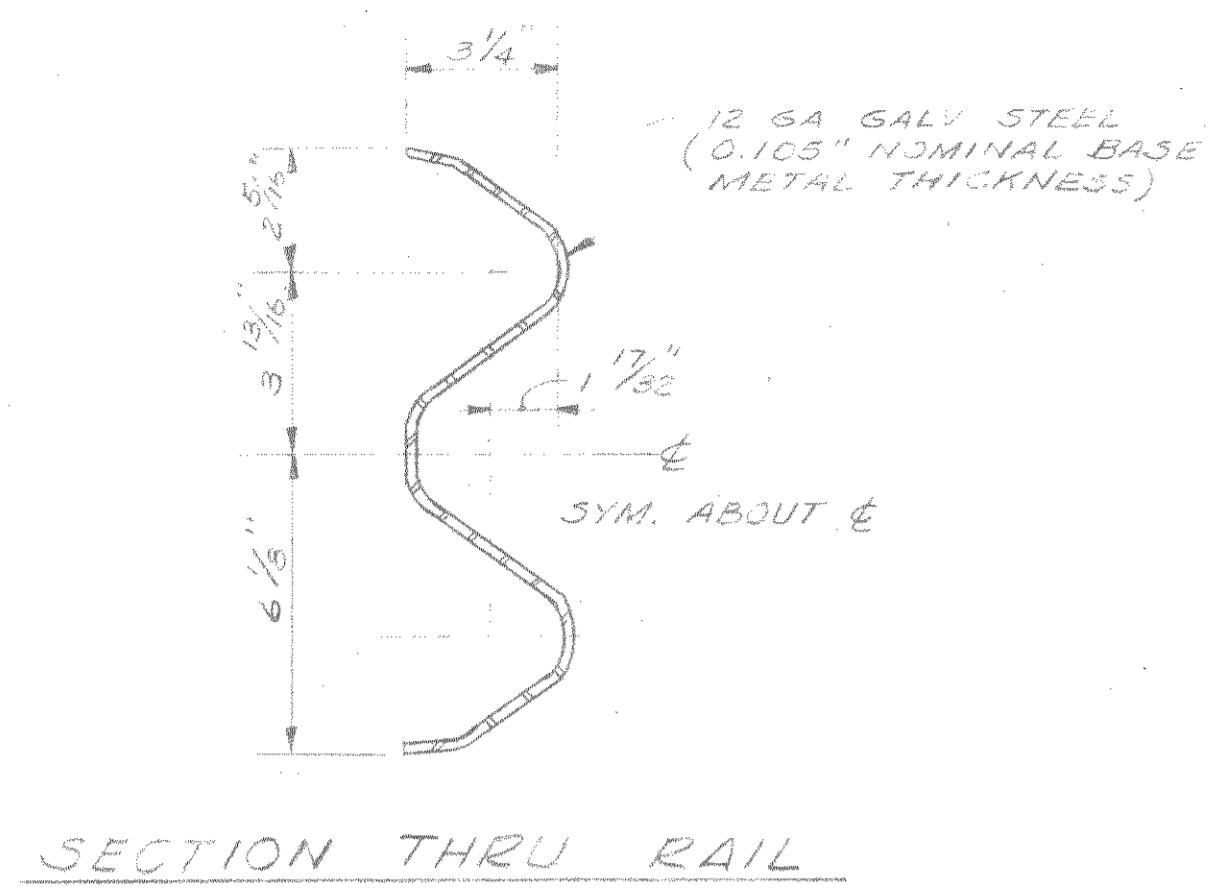
DATE
BY
PLAN
DESIGNED BY
DRAWN BY
CHECKED BY
NOTE BOOK
ALIGNED CHECKED
NO. OF WAY CHECKED
No.

DATE
BY
PROFILE
DESIGNED BY
DRAWN BY
CHECKED BY
NOTE BOOK
GRADES CHECKED
STRUCTURE NOTATIONS CHECKED
No.

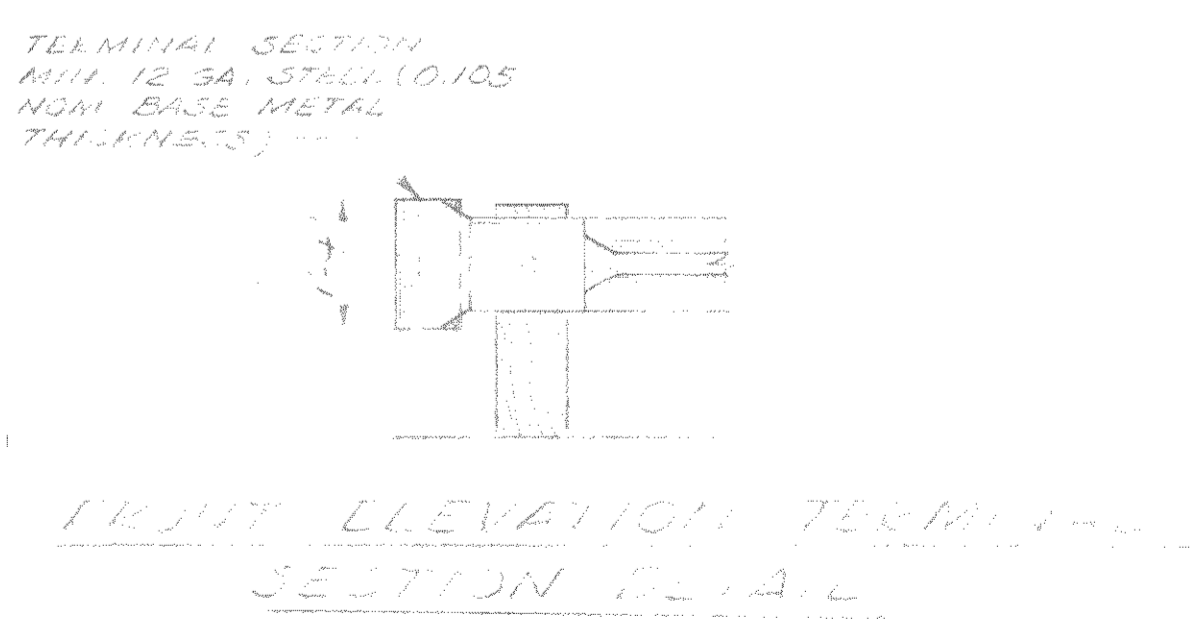
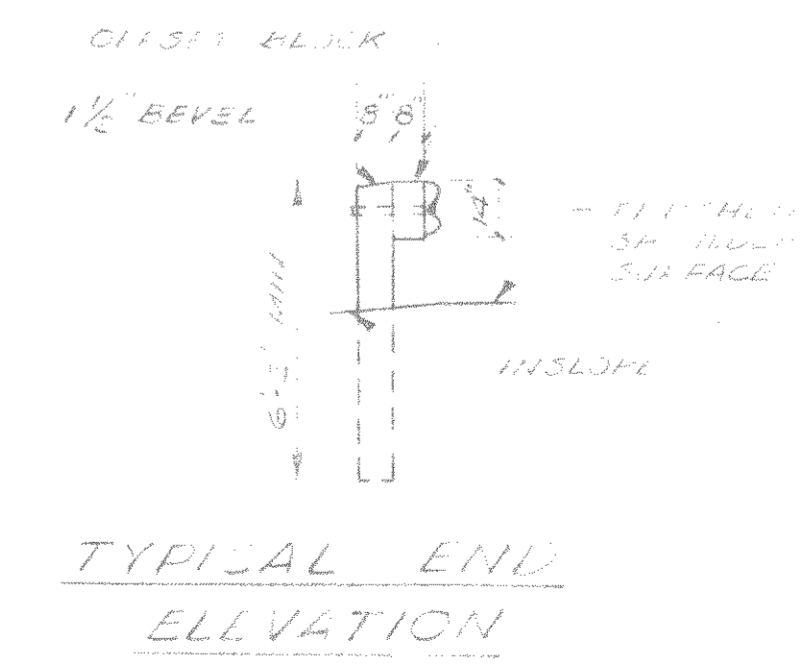
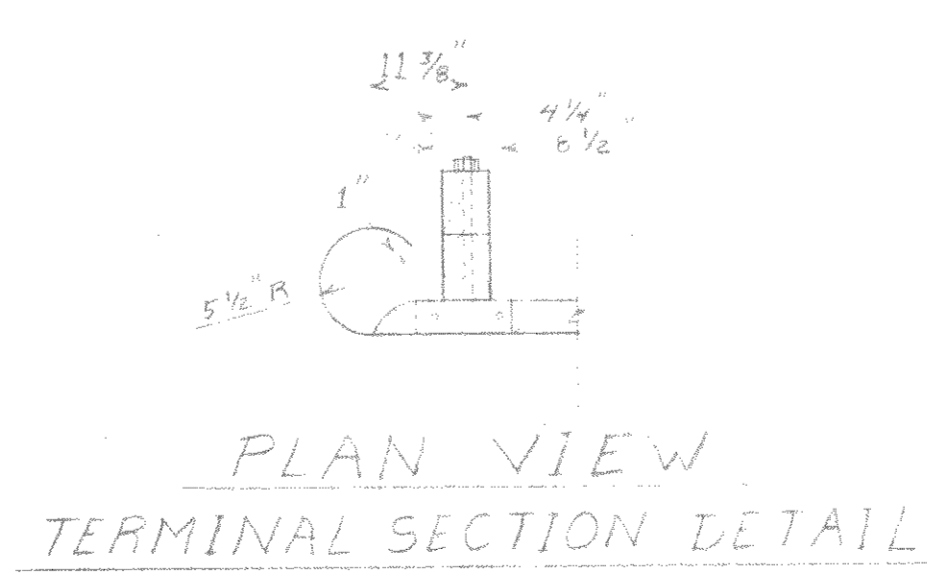
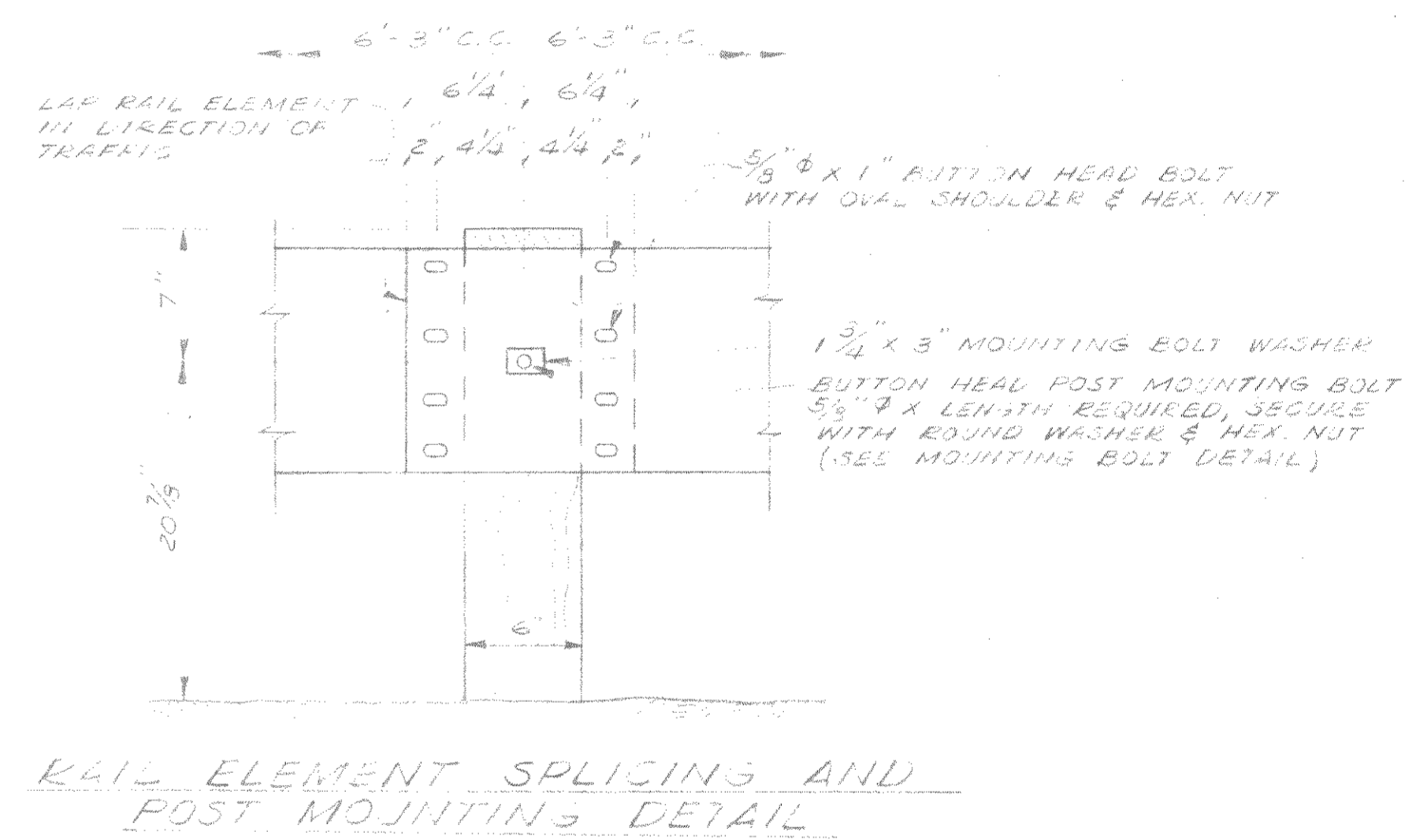


SCALE 1" = 50'





NOTE:
 1. SAWED AND TREATED TIMBER POSTS AND OFFSET BLOCKS SHALL BE FURNISHED AND PLACED IN ACCORDANCE WITH STANDARD SPECIFICATIONS. POSTS SHALL BE 6" X 8" X 6'-0" AND HAVE 6" X 8" X 10" OFFSET BLOCKS.
 2. PLACE 1'-0" SECTION OF RAIL ELEMENT, WITH A 3/4" SLOTTED HOLE FOR MOUNTING, BEHIND CONTINUOUS RAIL ELEMENT AT INTERMEDIATE POSTS.



MILL WELT BRIDGE
 APPROACH ROADS
 B 35-73
 MILWAUKEE, WIS.
 OCT 75

DESIGNED: <u>REK</u>	MEAD AND HUNT, INC. CONSULTING ENGINEERS MADISON, WISCONSIN	A 1540
DRAWN: <u>JLJ</u>		
CHECKED: _____		
APPROVED: _____		