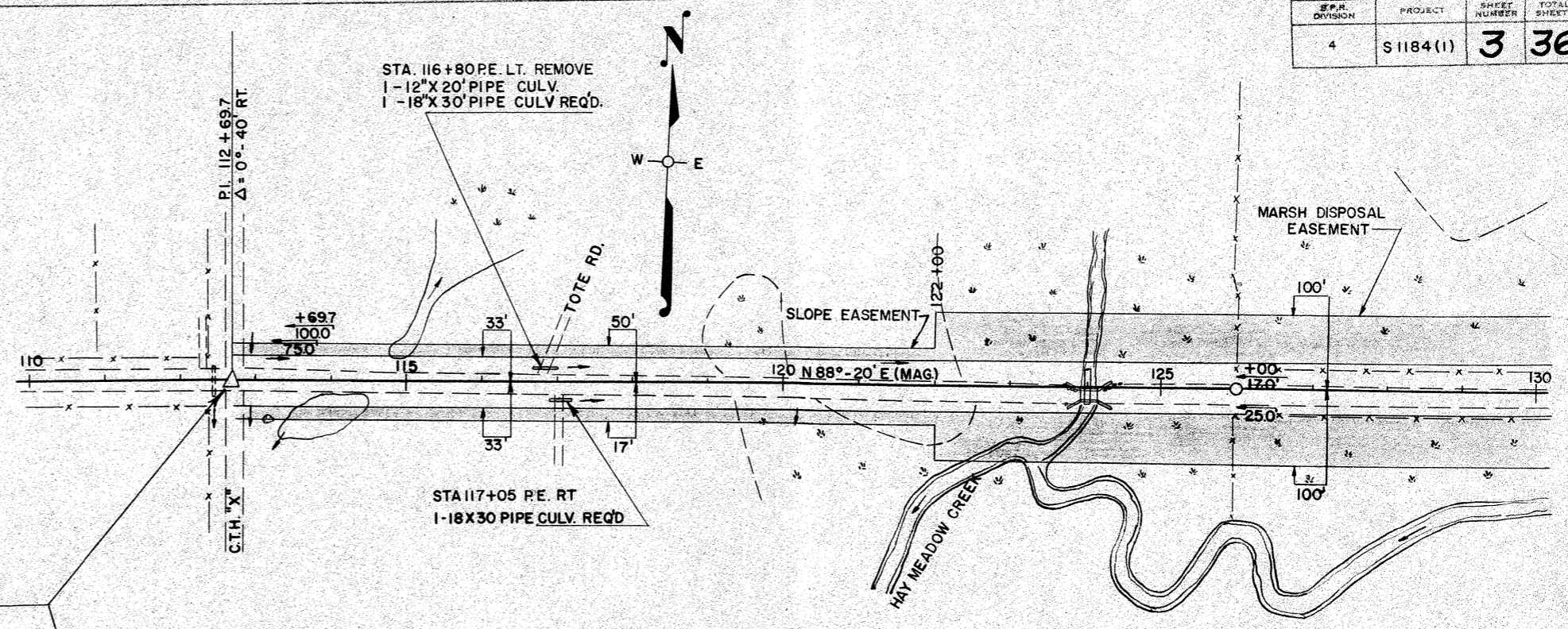


DATE: 11-57  
 SCALE: 1"=40'  
 PLAN: 8276

PROFILE: 8553

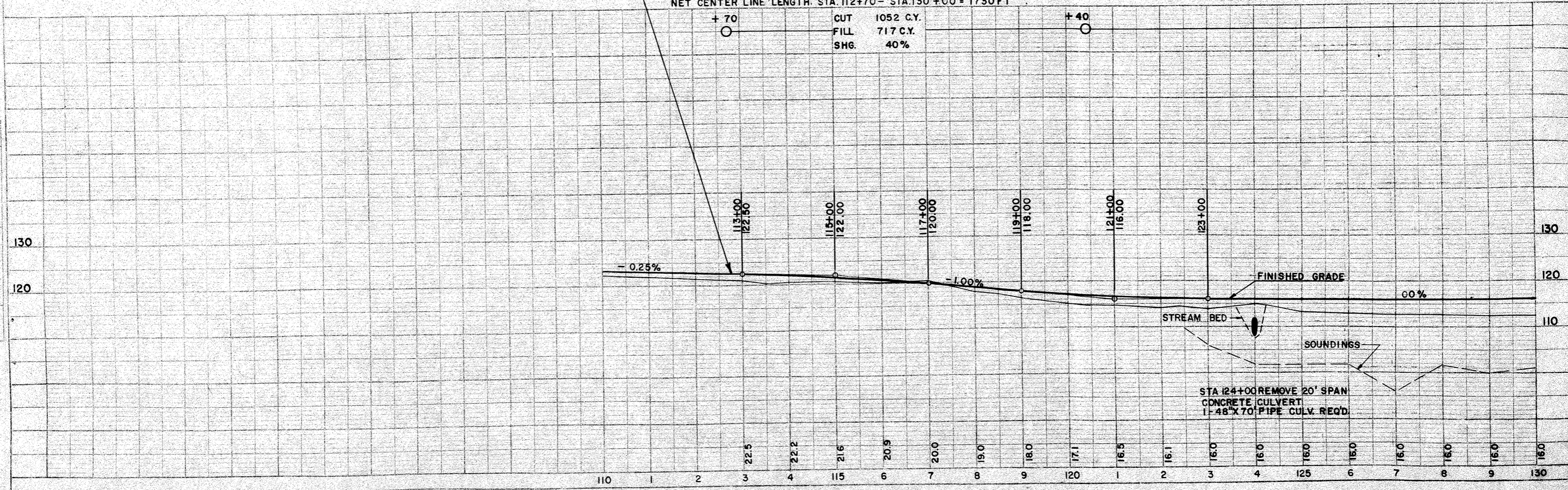


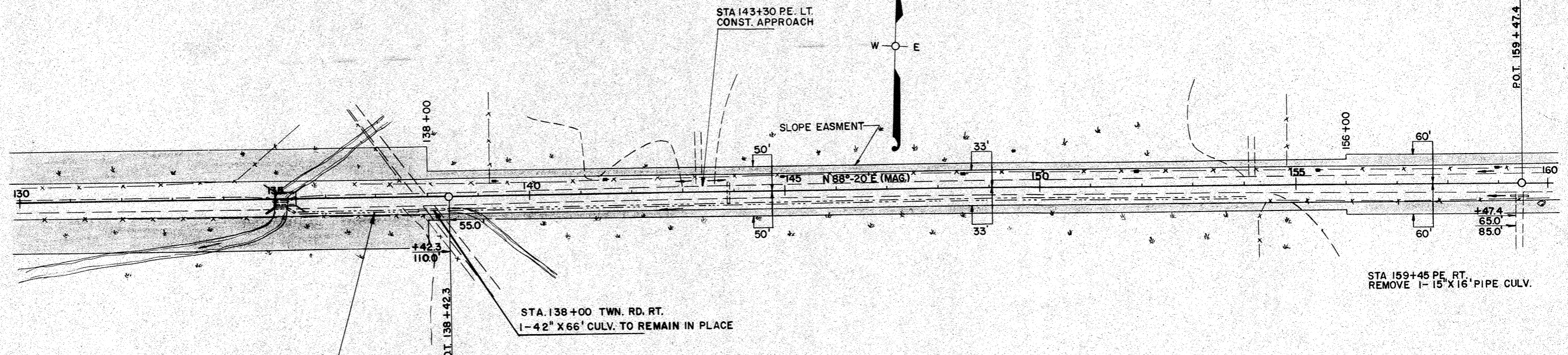
STA. 112+70 BEGINNING OF PROJ. S1184 (1)

BENCH MARKS			
NO.	STATION	DESCRIPTION	ELEV.
63	113+25	SPIKE IN 14" MAPLE 110' RT.	120.44
64	122+25	" " 8" ASPEN 60' RT.	112.29

NET CENTER LINE LENGTH: STA. 112+70 - STA. 130+00 = 1730 FT

+ 70      CUT 1052 C.Y.  
 FILL 717 C.Y.  
 SHG. 40%      + 40





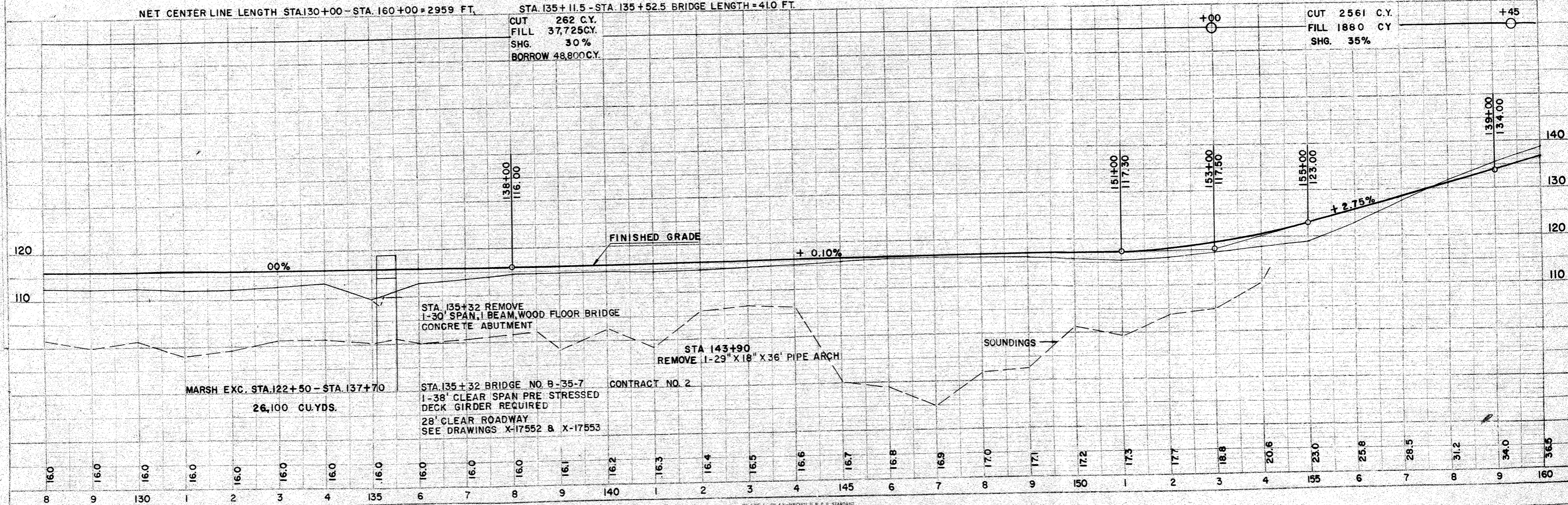
**BENCH MARKS**

NO.	STATION	DESCRIPTION	ELEV.
65	138+80	SPIKE IN 12" ELM 200' RT.	114.79
66	154+40	" " 18" ELM 110' RT.	116.46
67	159+70	" " 12" ASPEN 75' RT.	140.44

NET CENTER LINE LENGTH STA. 130+00 - STA. 160+00 = 2959 FT.      STA. 135+11.5 - STA. 135+52.5 BRIDGE LENGTH = 41.0 FT.

CUT 262 C.Y.  
FILL 37,725 C.Y.  
SHG. 30%  
BORROW 48,800 C.Y.

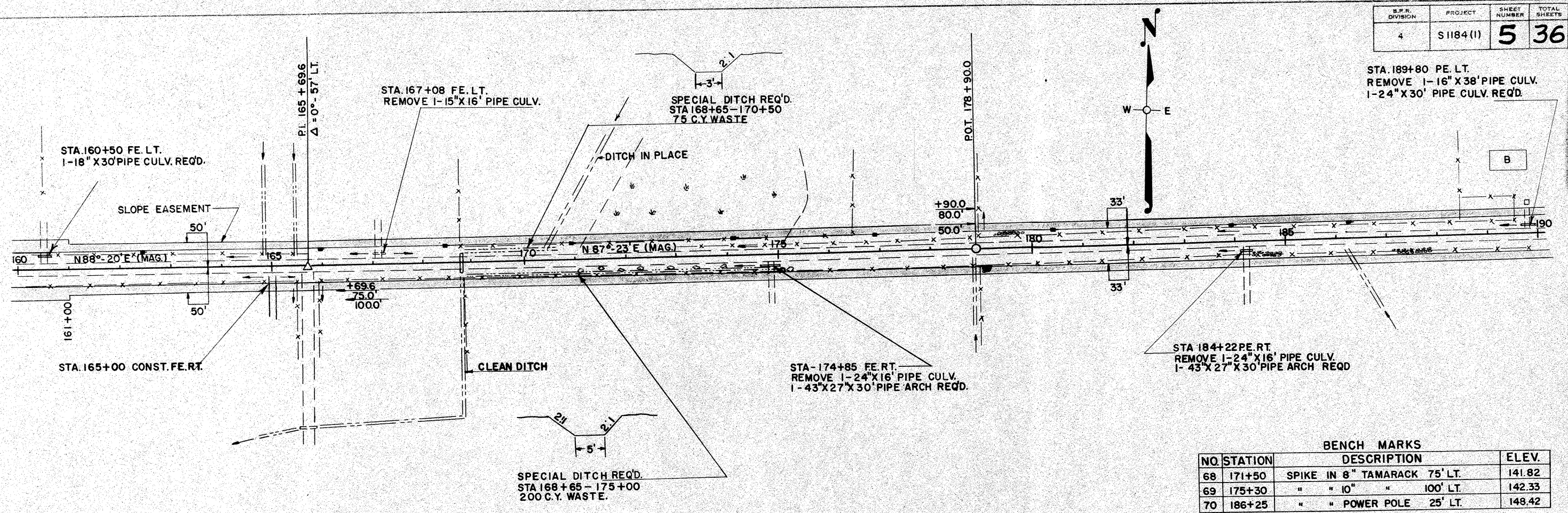
+00      CUT 2561 C.Y.  
FILL 1880 CY  
SHG. 35%      +45



DATE: 11/27/57  
BY: [Signature]  
CHECKED: [Signature]  
PLANNED: [Signature]  
NOTE: [Text]  
NO. 8276

DATE: [Blank]  
BY: [Blank]  
CHECKED: [Blank]  
PLANNED: [Blank]  
NOTE: [Blank]  
NO. 8553

STA. 189+80 PE. LT.  
 REMOVE 1-16" X 38' PIPE CULV.  
 1-24" X 30' PIPE CULV. REQ'D.

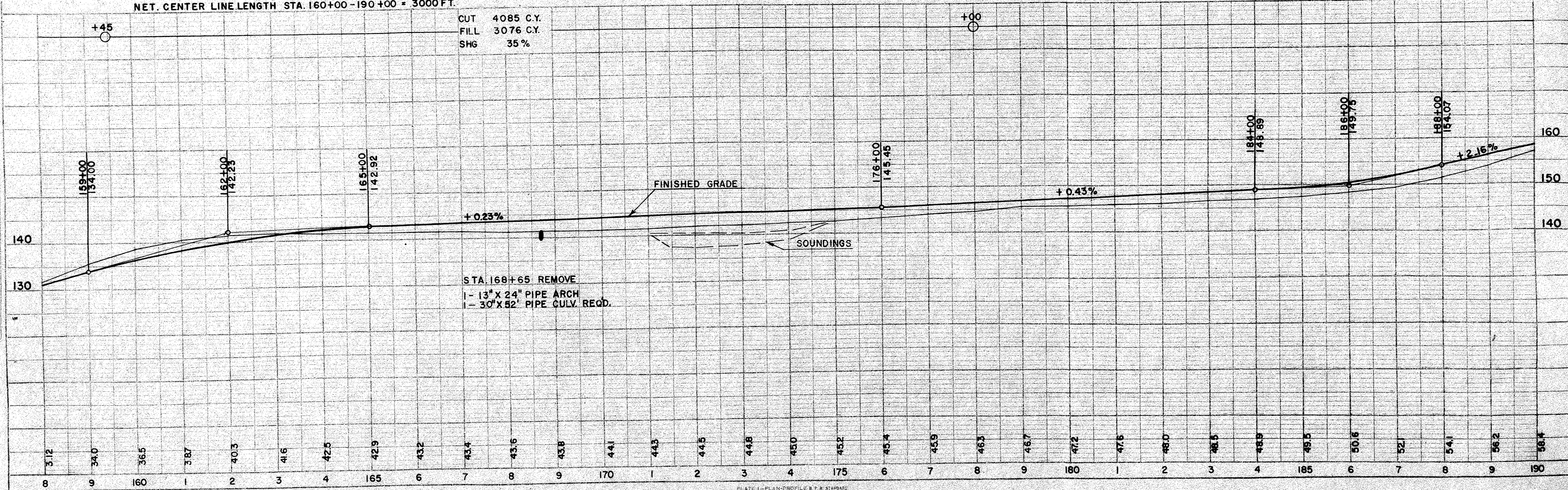


BENCH MARKS

NO.	STATION	DESCRIPTION	ELEV.
68	171+50	SPIKE IN 8" TAMARACK 75' LT.	141.82
69	175+30	" " 10" " 100' LT.	142.33
70	186+25	" " POWER POLE 25' LT.	148.42

NET. CENTER LINE LENGTH STA. 160+00 - 190+00 = 3000 FT.

CUT 4085 C.Y.  
 FILL 3076 C.Y.  
 SHG 35%

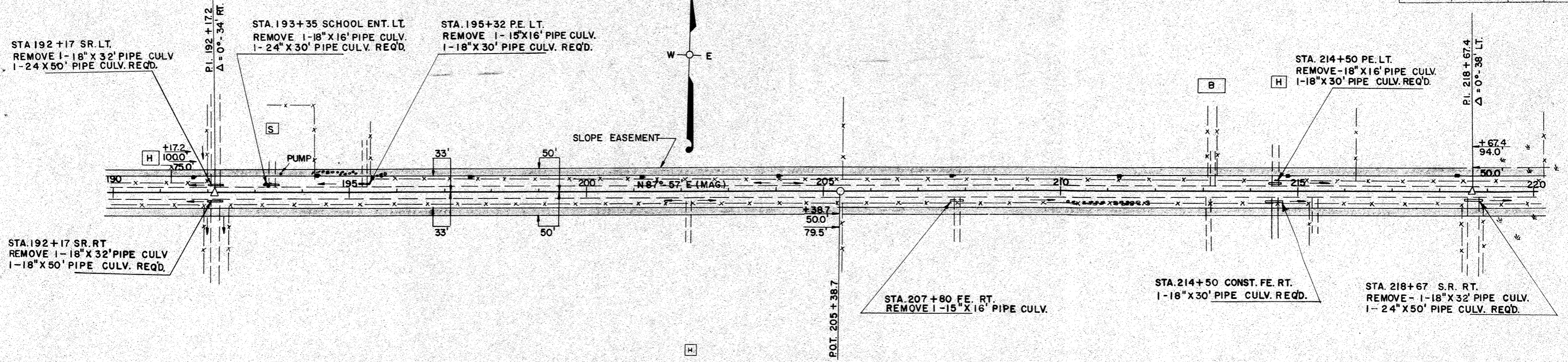


STA. 168+65 REMOVE  
 1-13" X 24" PIPE ARCH  
 1-30" X 52' PIPE CULV. REQ'D.

PLAN  
 8276

PROFILE  
 8353

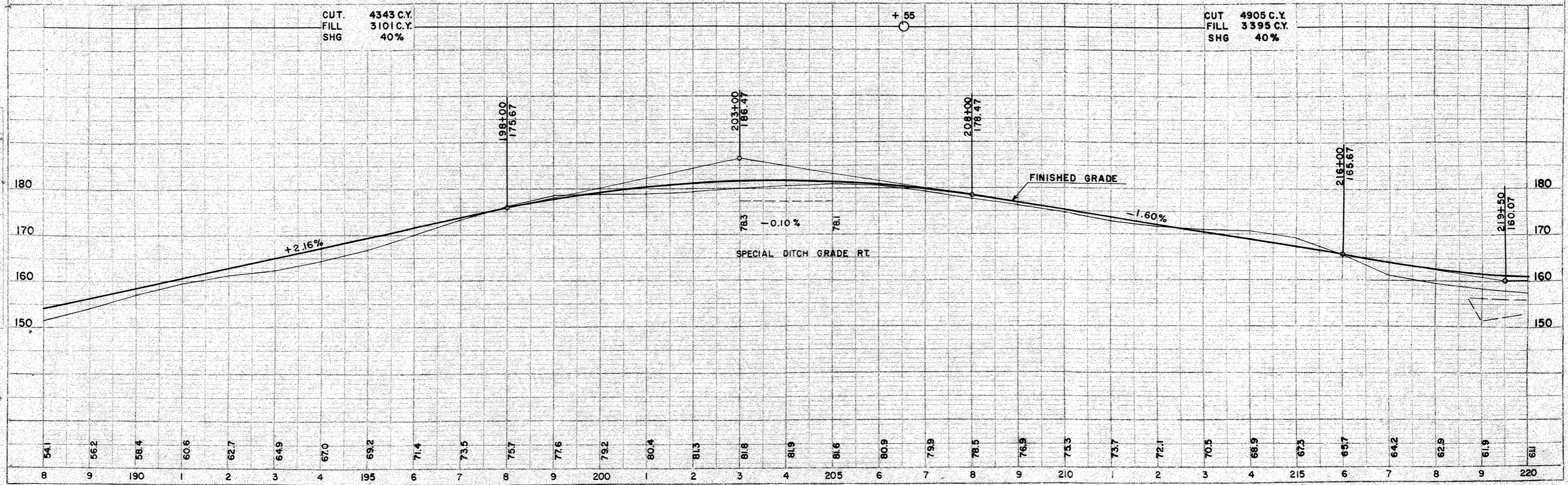
DATE: 11-57  
 BY: S. G. M. / M. J. S.  
 PROJECT: UNIMPROVED  
 PLAN: 8276



**BENCH MARKS**

NO.	STATION	DESCRIPTION	ELEV.
71	193+15	SPIKE IN 24" ELM 110' LT.	166.01
72	205+40	" " 6" ASPEN 120' RT.	181.11
73	213+15	" " 15" ELM 80' LT.	170.81

NET CENTER LINE LENGTH STA 190+00 - 220+00=3000 FT.



CUT 4343 C.Y.  
 FILL 3101 C.Y.  
 SHG 40%

CUT 4905 C.Y.  
 FILL 3395 C.Y.  
 SHG 40%

DATE: 11-57  
 BY: S. G. M. / M. J. S.  
 PROJECT: UNIMPROVED  
 PROFILE: 8276