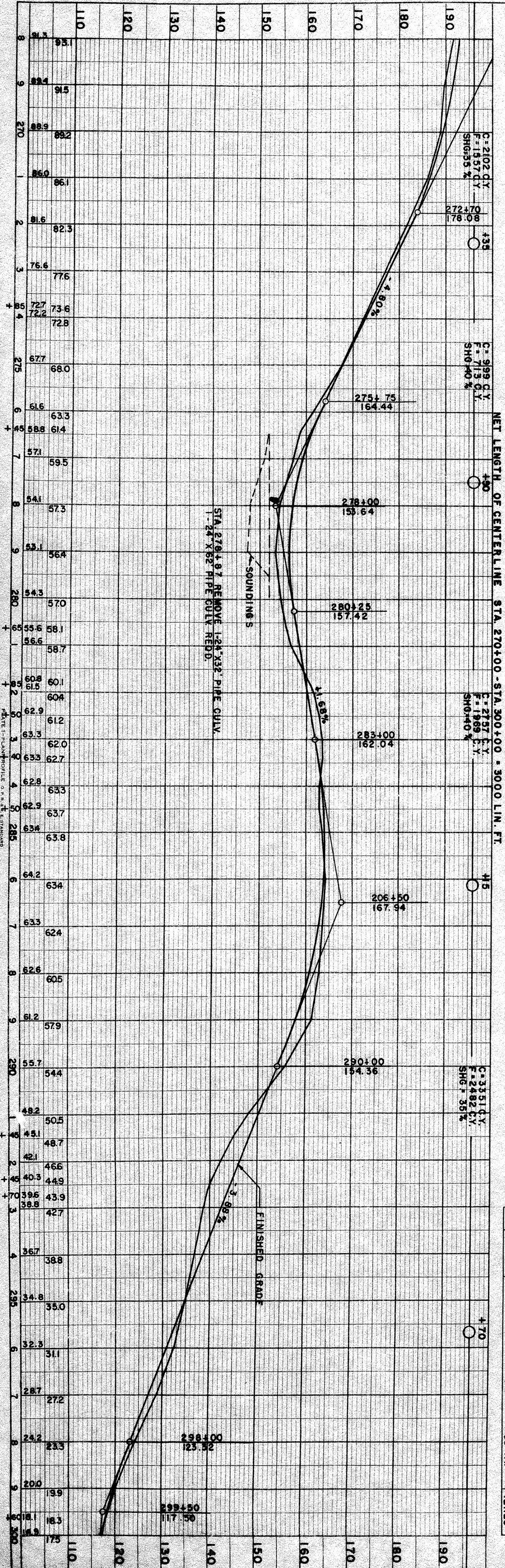
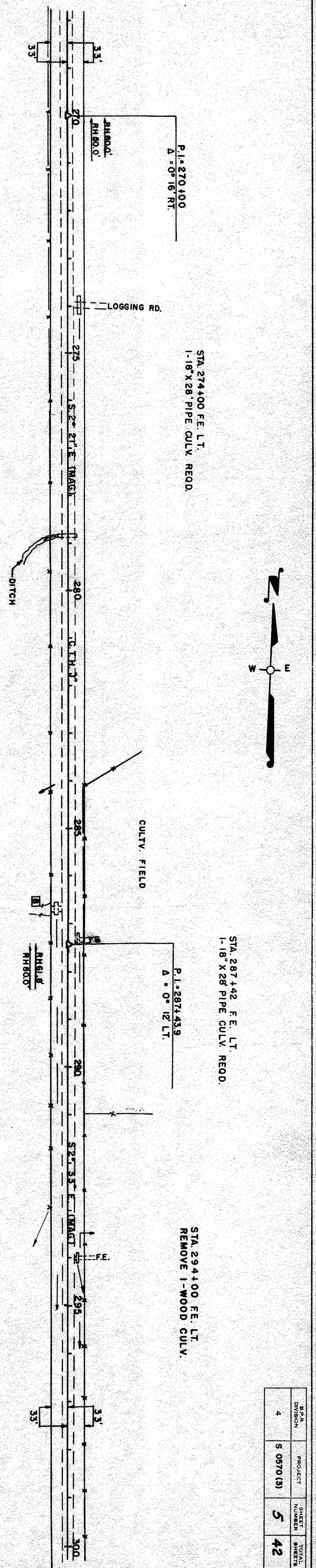


PROFILE	SURVEYED	BY	DATE
NOTE BOOK NO. 8427	PLOTTED	R.M. C.W.	1-55
	GRADES CHECKED		
	BY M.S. NOTED		
	STRUCTURE NOTATIONS CHECKED		

PLAN	SURVEYED	BY	DATE
NOTE BOOK NO. 8483	PLOTTED	R.M. C.W.	1-55
	ALIGNMENT CHECKED		
	RT. OF WAY CHECKED		



NO. STATION	DESCRIPTION	ELEV.
28	275+90 SPIKE IN 12" POPLAR 60' LT.	166.23
29	285+90 SPIKE IN 10" S. MAPLE 100' RT.	158.96
30	297+10 SPIKE IN 14" ELM 85' RT.	127.23

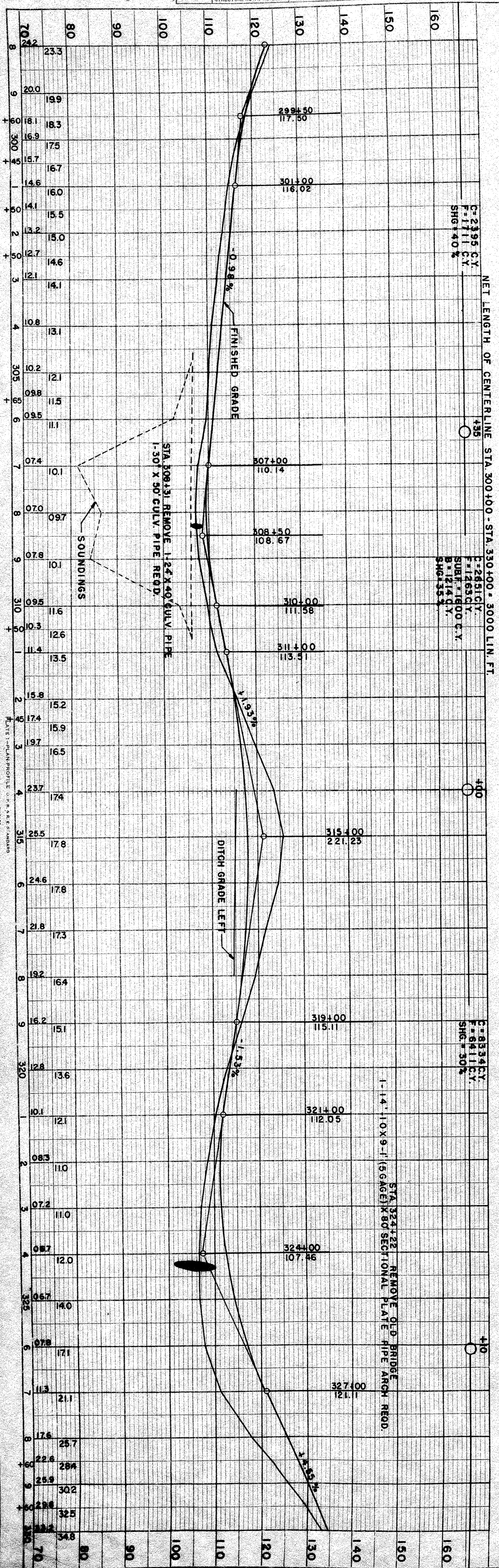
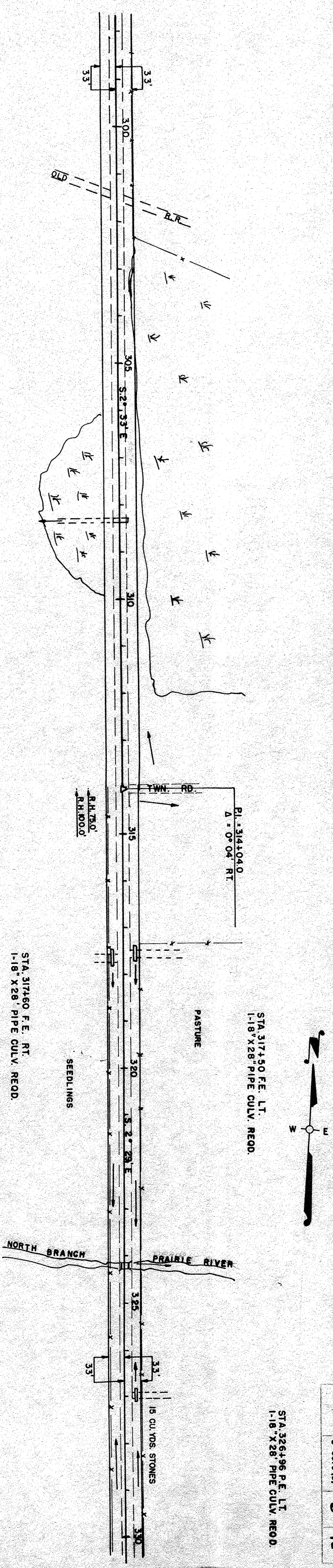


B.M. NO.	PROJECT	SHEET NUMBER	TOTAL SHEETS
4	S 0570 (3)	5	42



PLAN	SURVEYED	BY	DATE
NOTE BOOK	PLOTTED	C.W.	1-55
NO. 8463	ALIGNMENT CHECKED	R.M.	
	RT. OF WAY CHECKED		

PROFILE	SURVEYED	BY	DATE
NOTE BOOK	PLOTTED	C.W.	1-55
NO. 8427	GRADES CHECKED	R.M.	
	S.M. 2 NOTED		
	STRUCTURE NOT AT HIS OPTION		



NO. STATION	DESCRIPTION	ELEV.
31 308+90	SPIKE IN 12" Y. BIRCH	108.47
32 321+85	SPIKE IN 30" TRELEM	108.80
33 337+00	SPIKE IN 5" POPLAR	152.66

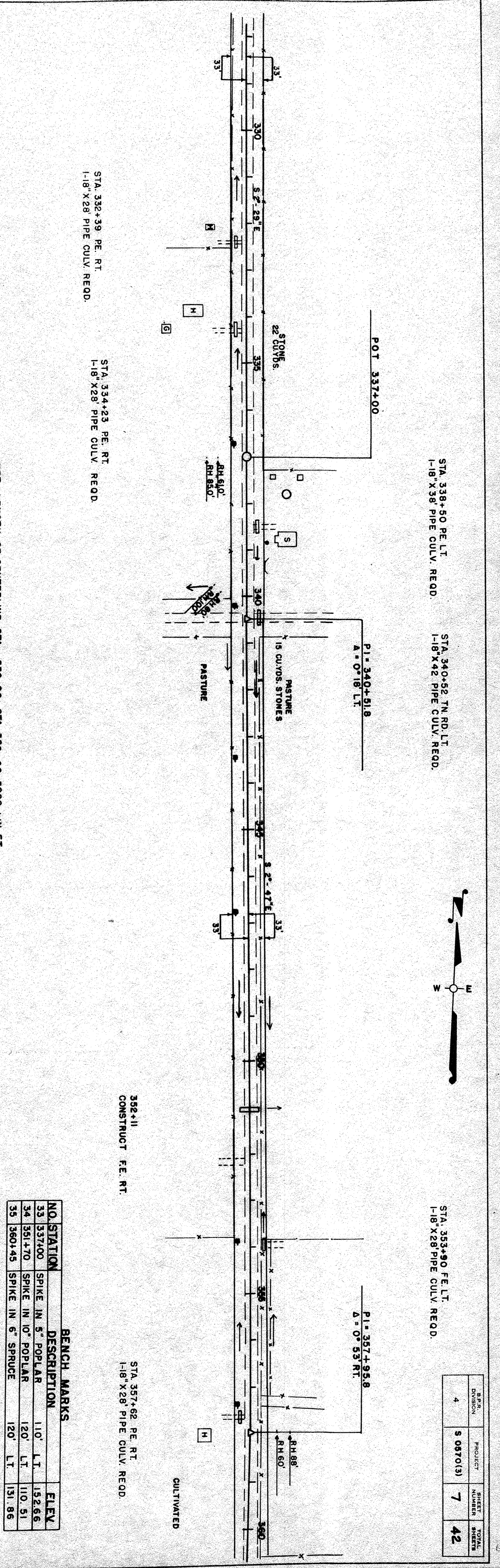
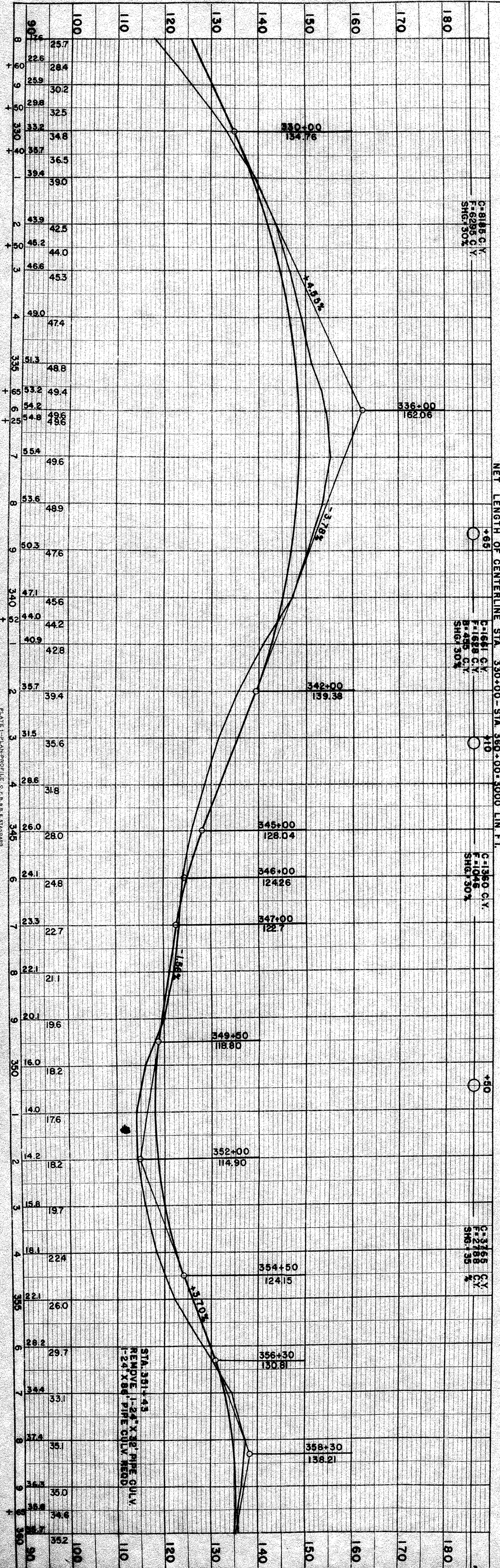
4	5 0570 (3)	6	42
---	------------	---	----

PLANNED BY: [unreadable]  
 DRAWN BY: [unreadable]  
 CHECKED BY: [unreadable]  
 INCHES TO FEET: 1" = 40'



PROFILE	SURVEYED	BY	DATE
NOTE BOOK NO. 8427	PLOTTED	CW RM	I-55
	GRADES CHECKED		
	B. M. S. NOTED		
	STRUCTURE NOTATIONS CHKD.		

PLAN	SURVEYED	BY	DATE
NOTE BOOK NO. 8483	PLOTTED	CW RM	I-55
	ALIGNMENT CHECKED		
	RT. OF WAY CHECKED		



NO.	STATION	DESCRIPTION	ELEV.
33	337+00	SPIKE IN 5" POPLAR	152.66
34	351+70	SPIKE IN 10" POPLAR	110.51
35	360+45	SPIKE IN 6" SPRUCE	131.86

STA. 338+50 PE. LT.  
1-18" X 28" PIPE CULV. REOD.

STA. 340+52 TN. RD. LT.  
1-18" X 42" PIPE CULV. REOD.

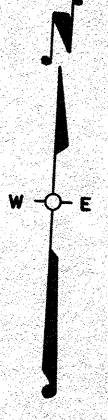
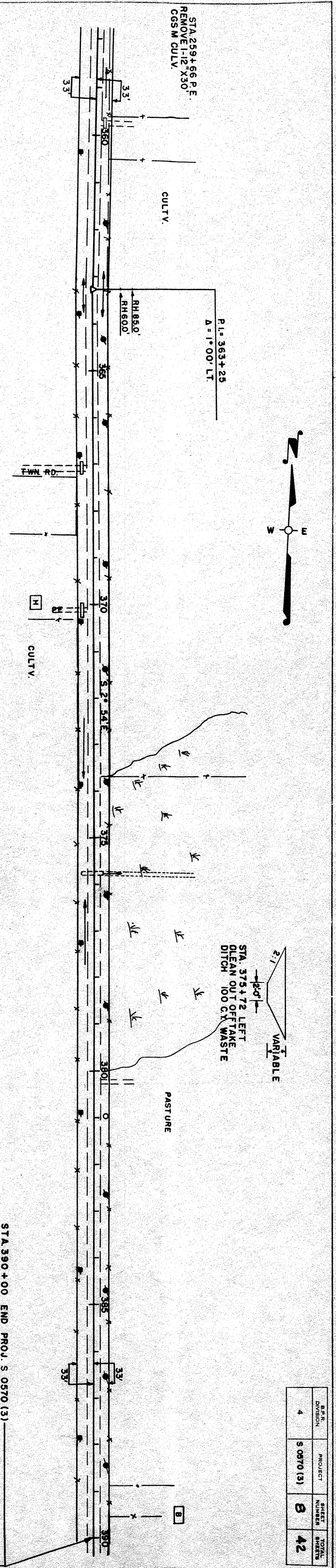
STA. 353+90 FE. LT.  
1-18" X 28" PIPE CULV. REOD.

B.M. NO.	PROJECT	SHEET NUMBER	TOTAL SHEETS
4	S 0870(3)	7	42



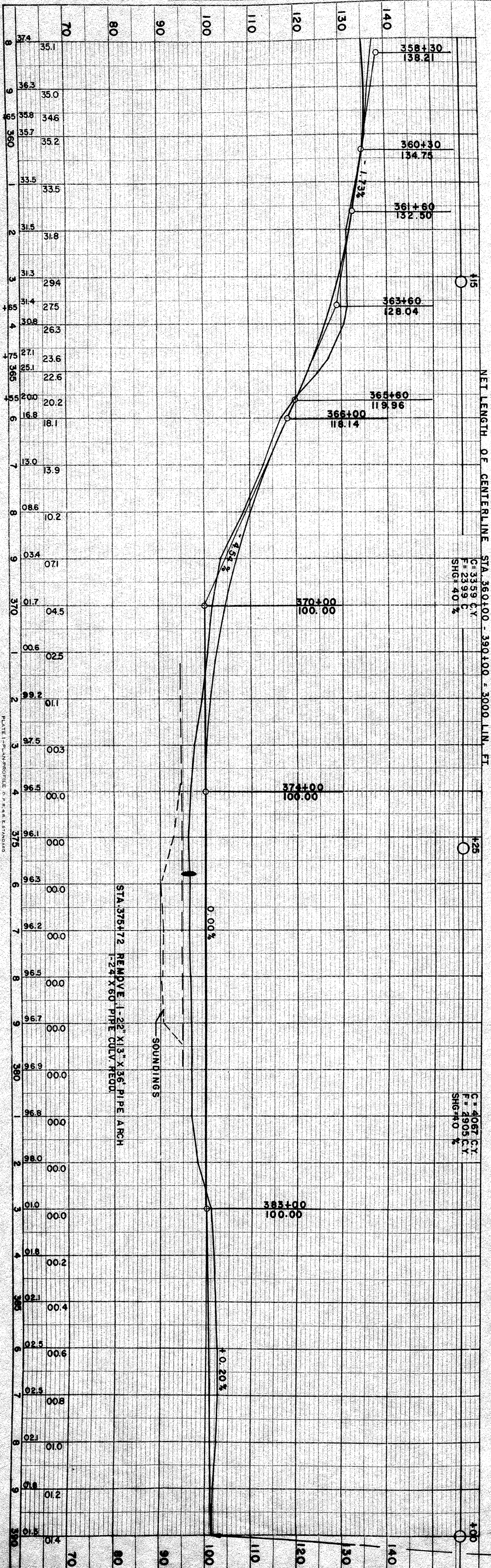
PLAN	SURVEYED	BY	DATE
	PLOTTED	R M	1-55
NOTE BOOK	ALIGNMENT CHECKED		
NO. 8483	RT. OF WAY CHECKED		

PROFILE	SURVEYED	BY	DATE
	PLOTTED	R M	1-55
NOTE BOOK	GRADES CHECKED		
NO. 8427	B.M.S. NOTED		
	STRUCTURE NOTATIONS CHECKED		



B.P.R. DIVISION	PROJECT	SHEET NUMBER	TOTAL SHEETS
4	S 0570 (3)	8	42

NO. STATION	DESCRIPTION	ELEV.
36 373+75	SPIKE IN P. POLE	96.47
37 384+30	SPIKE IN P. POLE	102.87
38 391+00	SPIKE IN 14\"/>	



NET LENGTH OF CENTERLINE STA. 360+00 - 390+00 = 3000 LIN. FT.

C = 4067 C.Y.  
F = 2905 C.Y.  
SHG = 4.0 %

STA. 375+72 REMOVE 1-24\"/>

PLATE 1-1/2\"/>