



SLOPE EASEMENT GRANTED WHEREVER SLOPE EXTENDS BEYOND THE RIGHT OF WAY LINES SHOWN.

STA 98+10 PE LT.
1-18" X 28' PIPE CULV. REQ'D.

STA. 120+20 PE. LEFT
1-18" X 28' PIPE CULV. REQ'D.

STA 96+00 FE RT.
1-18" X 28' PIPE CULV. REQ'D.

STA. 113+10 PE. RIGHT
1-18" X 28' PIPE CULV. REQ'D.

STA. 125+00
CONSTRUCT F.E. RIGHT

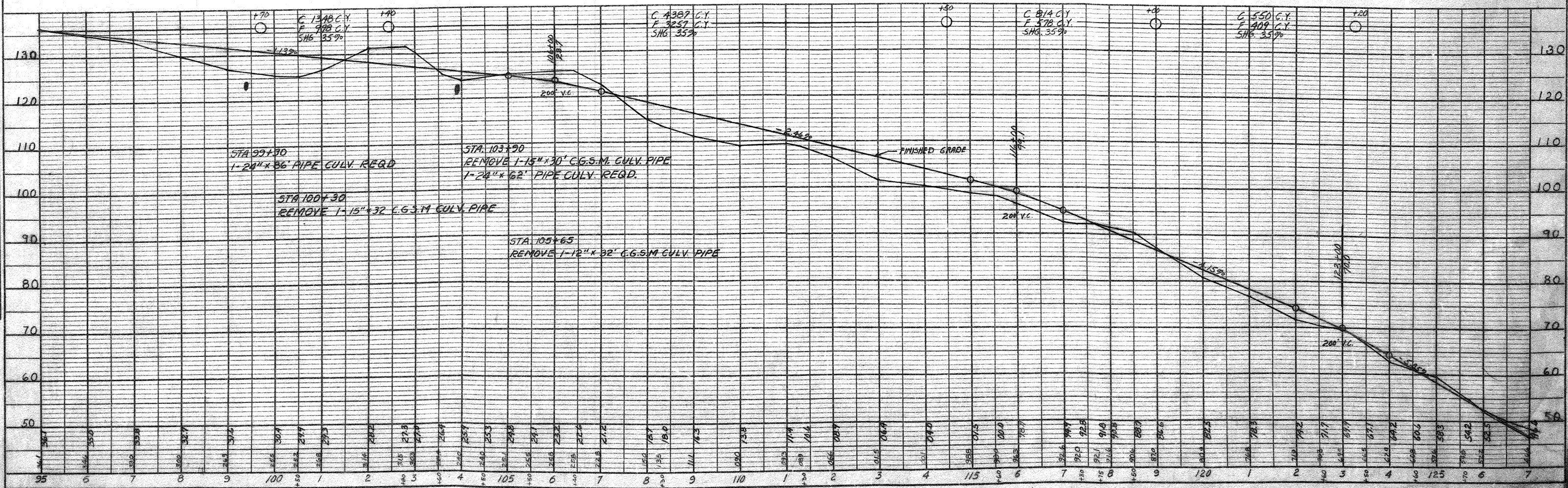
P.I. 105+49.0
Δ = 0° 04' RT.

F.O.T. 118+32.3

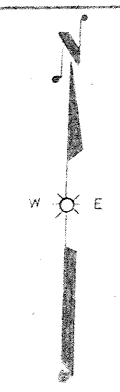
NO	STATION	DESCRIPTION	ELEV.
10	97+80	SPIKE IN 12" ELM	50' RT. 133.18
11	107+50	SPIKE IN 7" POPPLE	50' LT. 116.75
12	119+50	SPIKE IN 9" ELM	80' LT. 85.63

DATE: 1-54
BY: G.R.
CHECKED: G.R.
PLANNING: G.R.
PLAN: NOTE BOOK NO. 2427
REVISIONS: RT. OF WAY CHECKED.

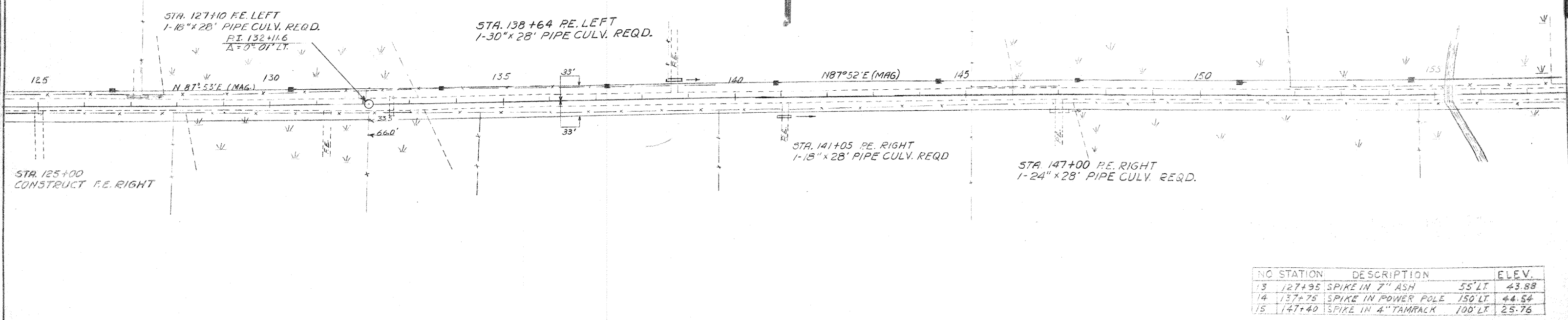
DATE: 1-54
BY: E.H.M. & I.J.D.
CHECKED: E.H.M. & I.J.D.
PROFILE: NOTE BOOK NO. 2427
REVISIONS: STRUCTURE NOTATIONS CHECKED.



SLOPE EASEMENT GRANTED WHEREVER SLOPE EXTENDS BEYOND THE RIGHT OF WAY LINES SHOWN.



DATE: 7-54
BY: S.P.
SURVEYED: []
ALIGNED: []
CHECKED: []
NOTE BOOK NO. 2323
PLAN



NO	STATION	DESCRIPTION	ELEV.
13	127+95	SPIKE IN 7" ASH	55' LT. 43.88
14	137+75	SPIKE IN POWER POLE	150' LT. 44.54
15	147+40	SPIKE IN 4" TAMRACK	100' LT. 25.76

DATE: 7-54
BY: E.H.A.
SURVEYED: []
P.L.O.T.T.E.D.: []
CHECKED: []
NOTE BOOK NO. 2427
PROFILE

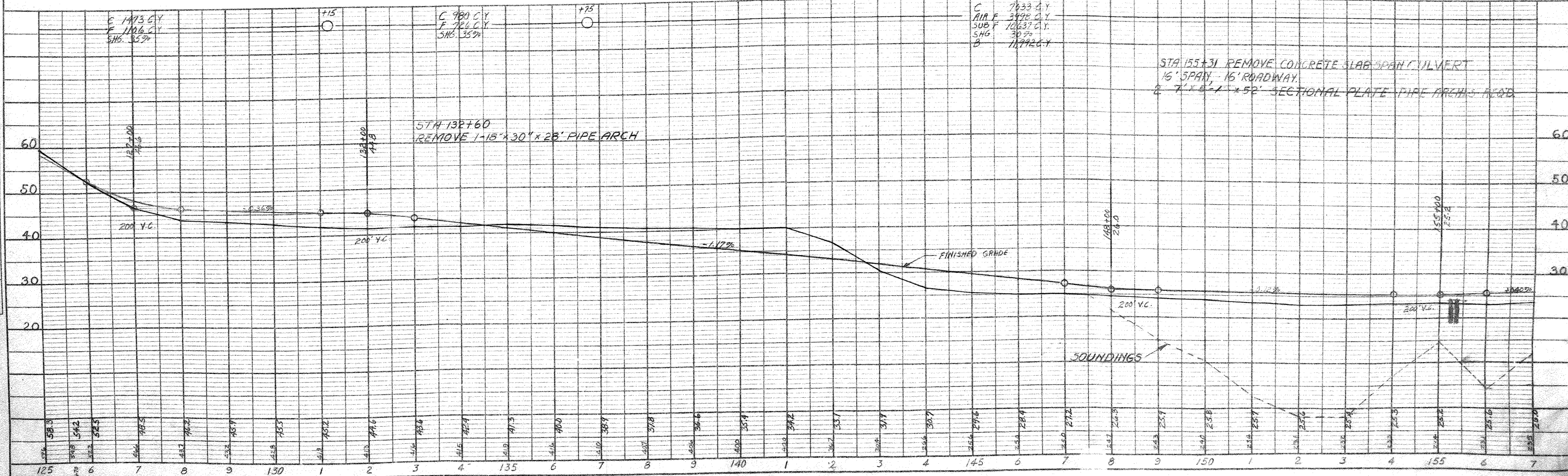
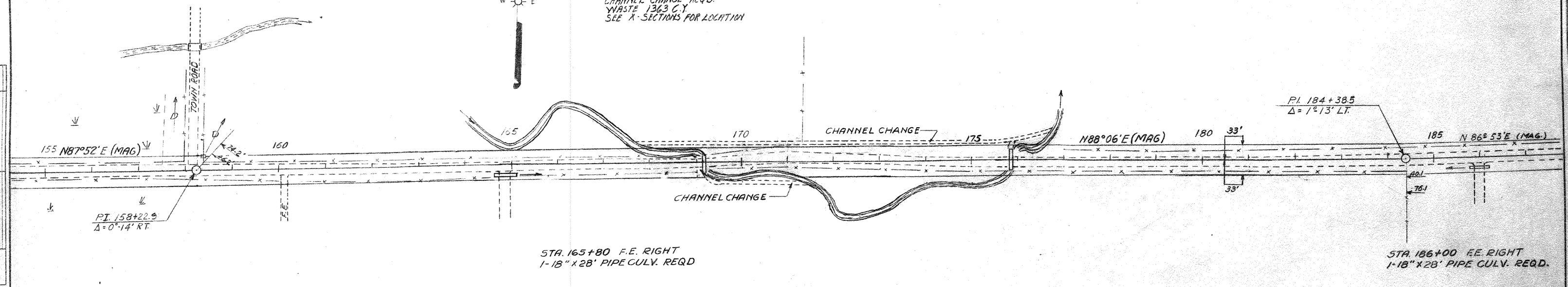


PLATE 1 - PLAN-PROFILE, D.P.R. & R.E. STANDARD
THE FREDERICK POST CO., CHICAGO

SLOPE EASEMENT GRANTED WHEREVER SLOPE EXTENDS BEYOND THE RIGHT OF WAY LINES SHOWN

STA. 167+70 - 176+60
CHANNEL CHANGE REQD.
WASTE 1363 C.Y.
SEE X-SECTIONS FOR LOCATION

DATE 11-24-54
BY K. H. + J. B.
SURVEYED, PRINTED, ALIGNED, CHECKED, NO. 8233
PLAN NOTE BOOK NO. 8233

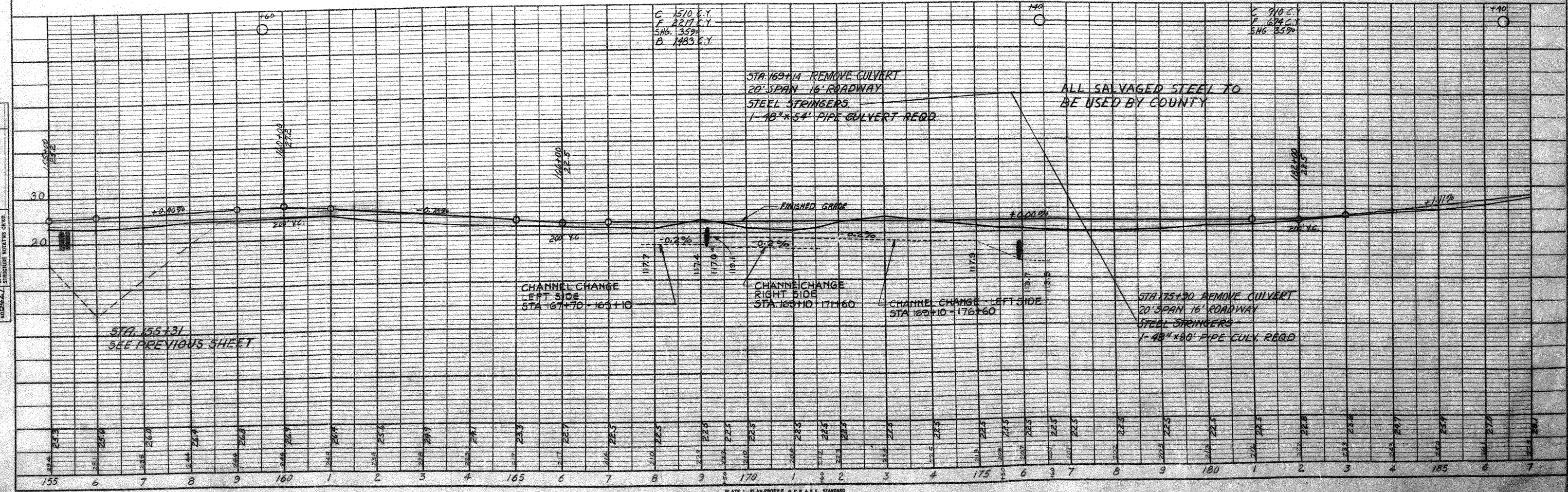


STA. 165+80 F.E. RIGHT
1-18" X 28' PIPE CULV. REQD.

STA. 186+00 F.E. RIGHT
1-18" X 28' PIPE CULV. REQD.

NO	STATION	DESCRIPTION	ELEV.
16	158+40	S.E. WHEEL GUARD OF BRIDGE 215' LT.	24.08
17	166+60	SPIKE IN PINE STUMP 80' RT.	25.30
18	177+80	SPIKE IN 48" PINE STUMP 50' LT.	21.15

DATE 11-24-54
BY K. H. + J. B.
SURVEYED, PRINTED, ALIGNED, CHECKED, NO. 8233
PROFILE STRUCTURE NOTATION CRD.



C 1510 C.Y.
F 2217 C.Y.
SNG. 3392
B 1483 C.Y.

C 900 C.Y.
F 674 C.Y.
SNG. 8572

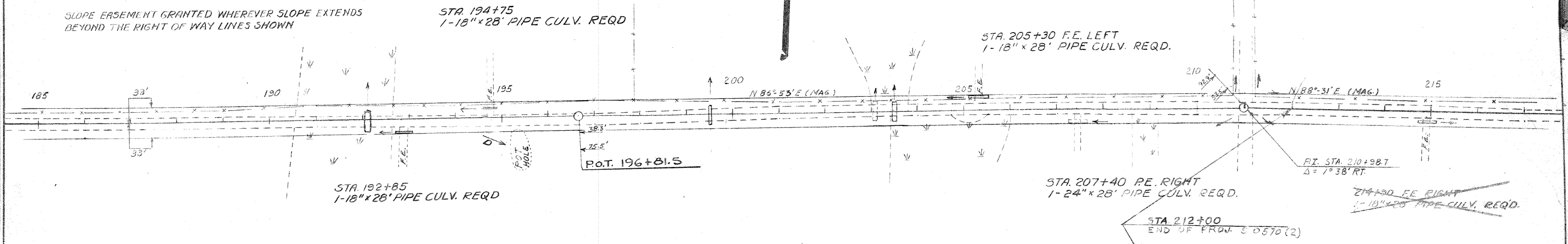
ALL SALVAGED STEEL TO BE USED BY COUNTY

STA. 155+31
SEE PREVIOUS SHEET

DATE: 1-1-56
 BY: C.W. G.H.
 SURVEYED: []
 NOTE BOOK: []
 PLAN: []
 NO. 2353

DATE: 1-1-56
 BY: F.H. G.H.
 SURVEYED: []
 NOTE BOOK: []
 PROFILE: []
 NO. 2353

SLOPE EASEMENT GRANTED WHEREVER SLOPE EXTENDS BEYOND THE RIGHT OF WAY LINES SHOWN



NO	STATION	DESCRIPTION	ELEV.
19	187+40	SPIKE IN 7" POPPLE 50' LT	27.75
20	197+85	SPIKE IN 8" POPPLE 50' RT	33.98
21	206+70	SPIKE IN 8" POPPLE 50' LT	37.74

