

STATE PROJECT	FEDERAL PROJECT	
	PROJECT	CONTRACT
9215-07-70	RS 1332(4)	1

STATE OF WISCONSIN DEPARTMENT OF TRANSPORTATION

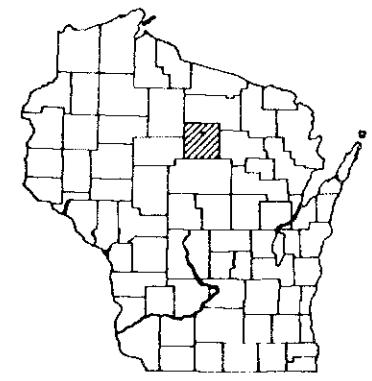
PLAN OF PROPOSED IMPROVEMENT

TOMAHAWK & SOMO AVENUE CITY OF TOMAHAWK S.T.H. 86 LINCOLN COUNTY

INDEX OF SHEETS

- Sheet No. 1 Title
- Sheet No. 2 - 2.2 Typical Sections and Details
- Sheet No. 3 & 3.1 Estimate of Quantities
- Sheet No. 3A-3C Miscellaneous Quantities
- Sheet No. - Right of Way Plat
- Sheet No. 5 - 5.3 Plan and Profile
- Sheet No. 6 - 6.9 Standard Detail Drawings
- Sheet No. - Sign Plates
- Sheet No. - Structure Plans
- Sheet No. - Computer Earthwork Data
- Sheet No. 9 - 9.7 Cross Sections

TOTAL SHEETS = 31



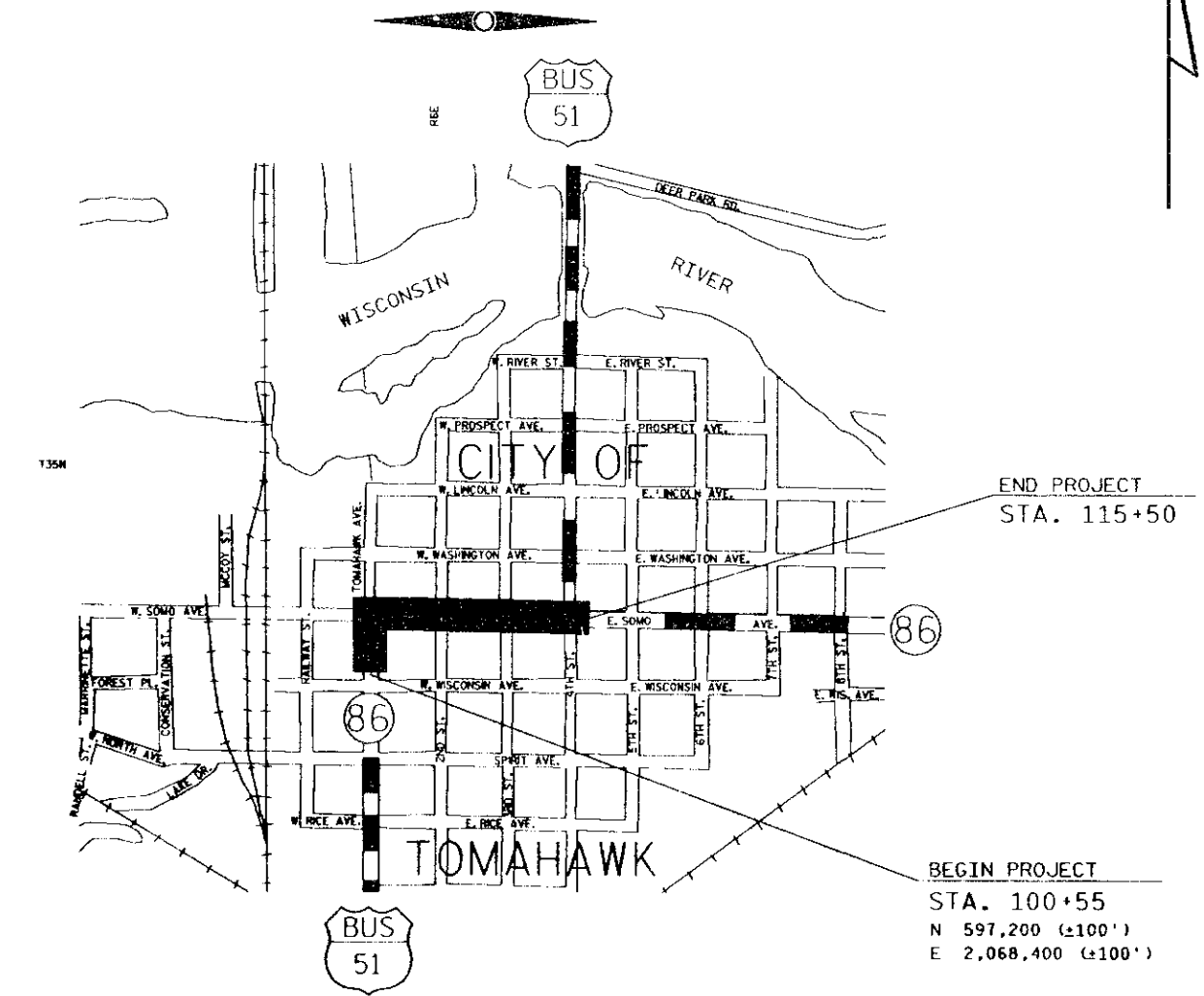
DESIGN DESIGNATION

A.D.T.	1990	=	2253
A.D.T.	2010	=	2881
D.H.V.		=	317
D.		=	50-50
T.		=	5.3%
V.		=	25 MPH

CONVENTIONAL SIGNS

EXISTING RIGHT OF WAY		COMBUSTIBLE FLUIDS (UNDER PRESSURE)	
NEW RIGHT OF WAY		LUMINAIRE	
REFERENCE LINE		SERVICE PEDESTAL	
SLOPE INTERCEPT		CABLE MARKER	
ORIGINAL GROUND		POWER POLE	
UNDERGROUND UTILITIES		TELEPHONE POLE	
GAS		RAILROADS	
ELECTRIC			
TELEPHONE			
SANITARY			
STORM SEWER			
WATER			

STATE PROJECT NUMBER
9215-07-70



LAYOUT
SCALE 0 0.1 MI.
TOTAL NET LENGTH OF CENTERLINE = 0.283 MI.

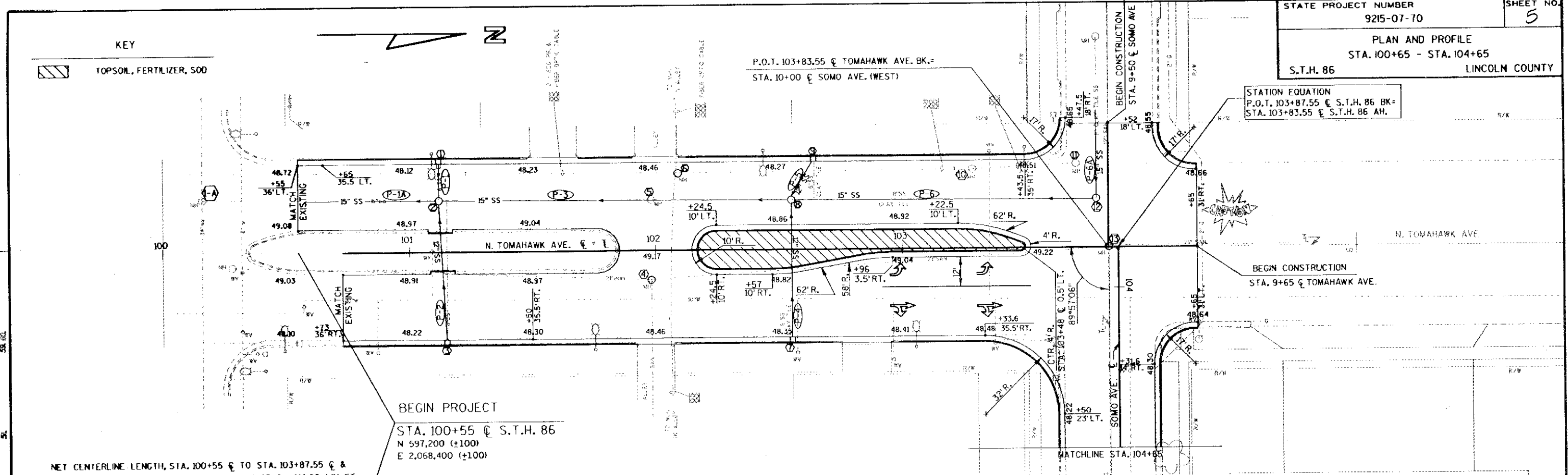
* ALL COORDINATES SHOWN ON THIS PLAN ARE BASED ON THE WISCONSIN COORDINATE SYSTEM, CENTRAL ZONE AND ARE SCALED FROM THE TOMAHAWK QUADRANGLE, FOR IDENTIFICATION.

#12
 LINCOLN
 NET. 9215-7-70
 SHEET T-10
 No. 1

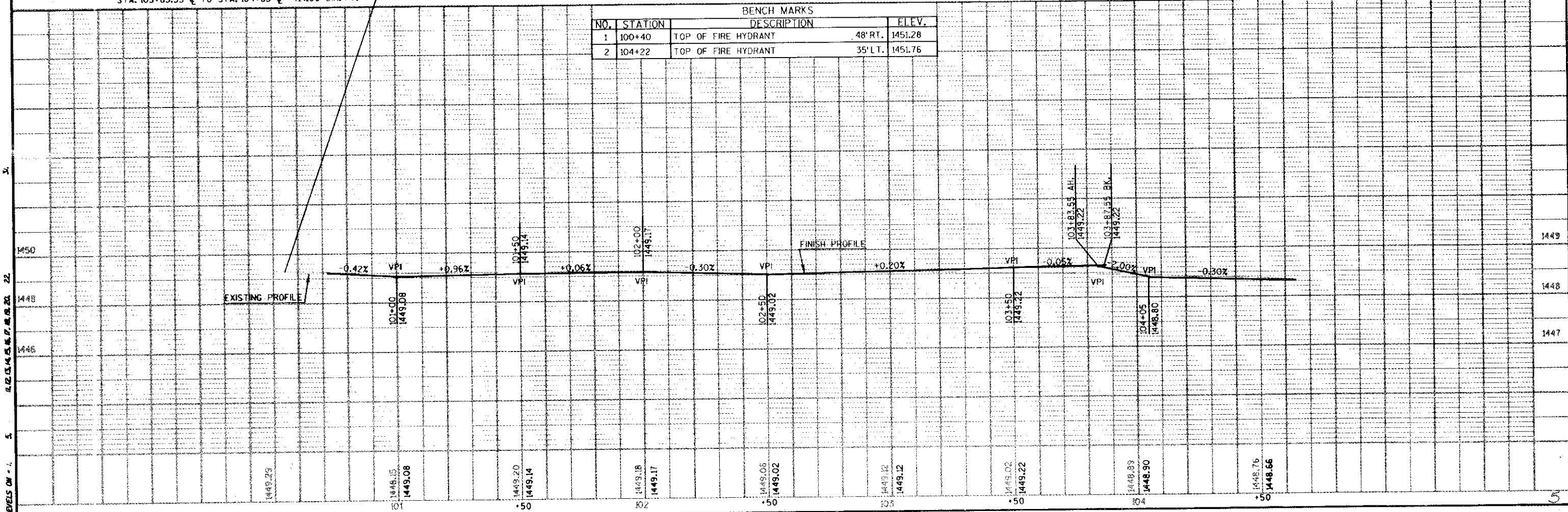
STATE OF WISCONSIN DEPARTMENT OF TRANSPORTATION	
Surveyor: JRM	District Checker: _____
Designer: WJC	C.O. Plan Examiner: JEG
District Supervisor: KHR	C.O. Coordinator: LAS
APPROVED: _____	
DATE: 1/21/89	DISTRICT DIRECTOR
APPROVED: _____	
DATE: 8/8/89	STATE DESIGN ENGINEER FOR HWYS.
U.S. DEPARTMENT OF TRANSPORTATION FEDERAL HIGHWAY ADMINISTRATION REGION 5 WISCONSIN DIVISION	
APPROVED: _____	
DATE: _____	
DIVISION ADMINISTRATOR	

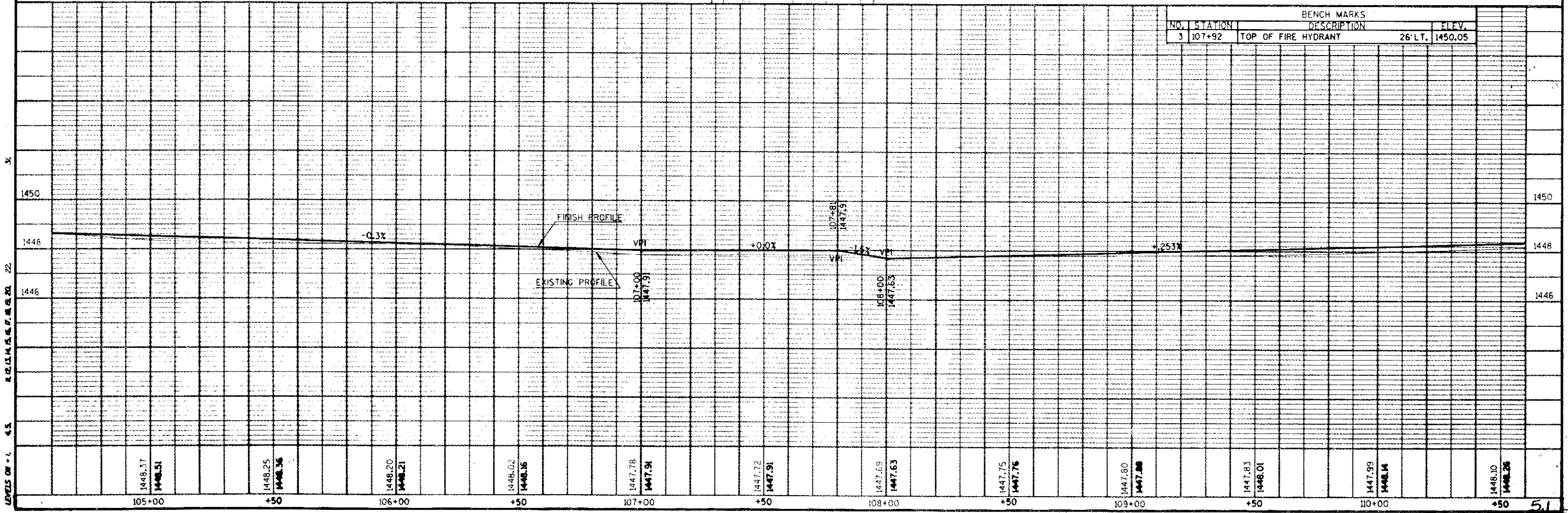
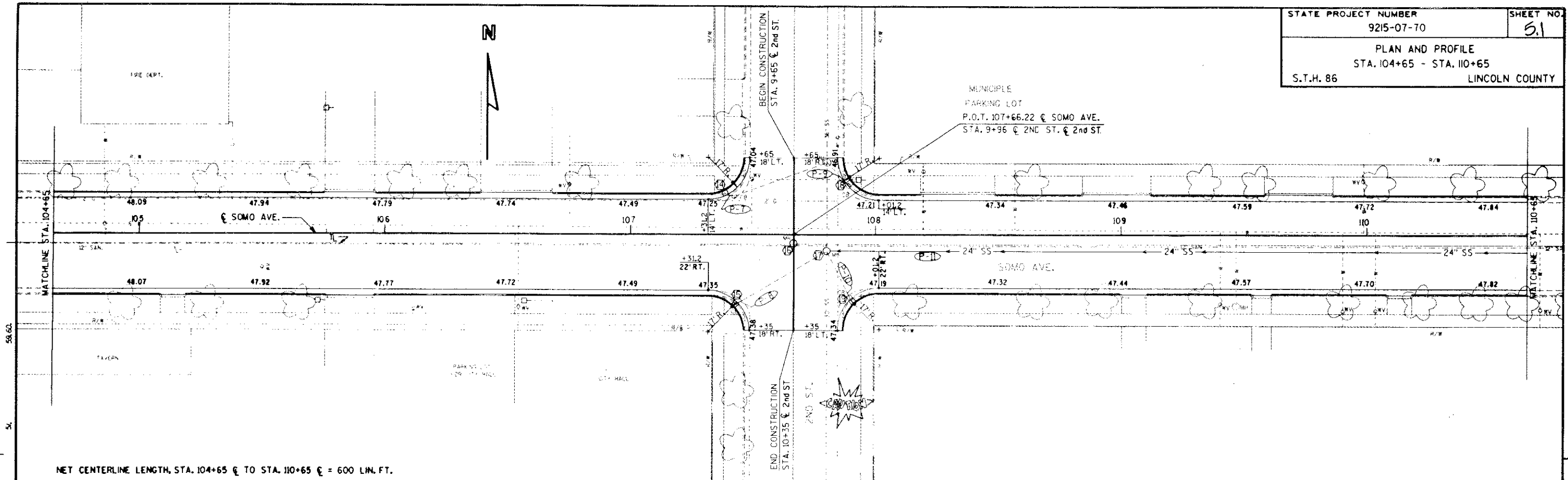
STATION EQUATION
P.O.T. 103+87.55 @ S.T.H. 86 BK=
STA. 103+83.55 @ S.T.H. 86 AH.

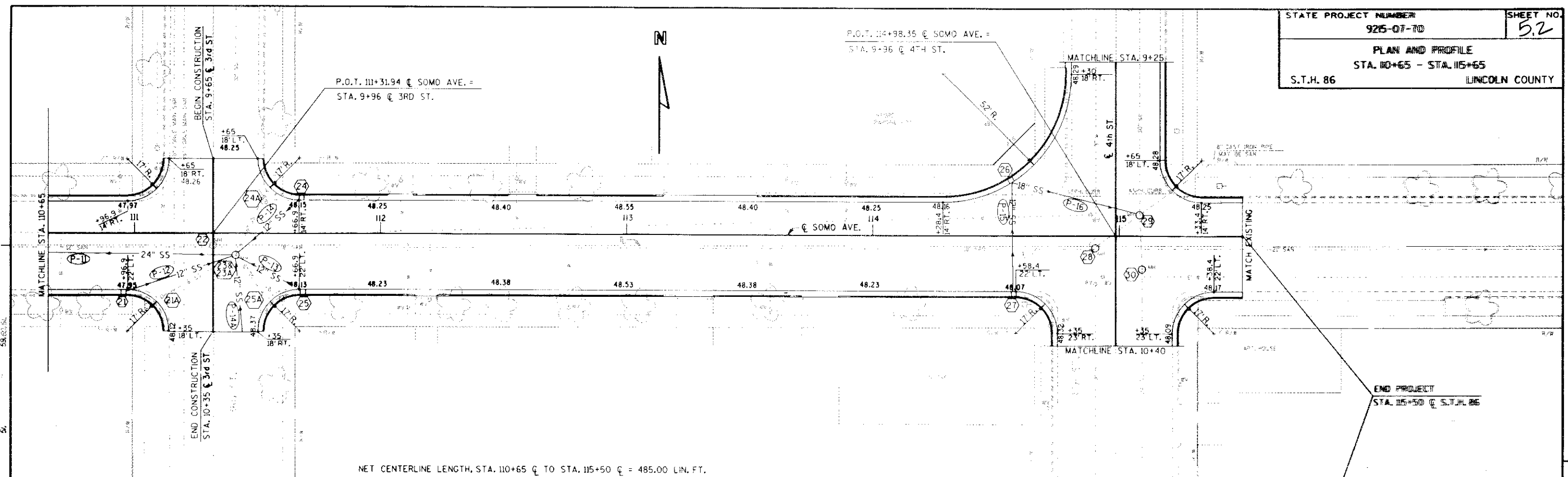
KEY
TOPSOIL, FERTILIZER, SOD



BENCH MARKS			
NO.	STATION	DESCRIPTION	ELEV.
1	100+40	TOP OF FIRE HYDRANT	48' RT. 1451.28
2	104+22	TOP OF FIRE HYDRANT	35' LT. 1451.76







NET CENTERLINE LENGTH, STA. 110+65 @ TO STA. 115+50 @ = 485.00 LIN. FT.

BENCH MARKS			
NO.	STATION	DESCRIPTION	ELEV.
4	111+10	TOP OF FIRE HYDRANT	40' LT., 1451.2
5	114+73	TOP OF FIRE HYDRANT	32' LT., 1451.21

