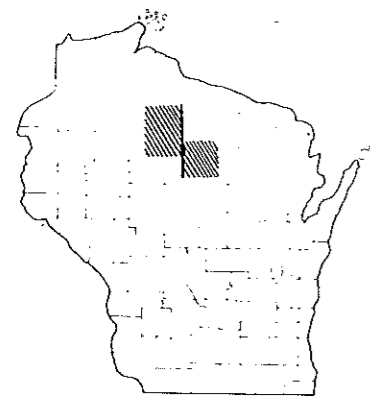


Index of Sheets

Sheet No. 1	Title
Sheet No. 2	Typical Cross Sections
Sheet No. 3	Estimate of Quantities
Sheet No. 3A	Miscellaneous Quantities
Sheet No. —	Right of Way Plat
Sheet No. 4-9	Plan and Profile Sta. 18+80 to Sta. 187+00.
Sheet No. 10-10.7	Standard Details
Sheet No. 11-12	Drainage Structures
Sheet No. 13-22	Machine Computations



STATE OF WISCONSIN
 DEPARTMENT OF TRANSPORTATION
 DIVISION OF HIGHWAYS

PLAN AND PROFILE OF PROPOSED

S.T.H. 86 - CLIFFORD
 C.T.H. "YY"
 LINCOLN & PRICE COUNTY
 PROJECT S 1129(3)

Scales: Plan 1" = 100 ft.
 Profile 1" = 100 ft. Vert. 1" = 10 ft.
 Proposed Right of Way 5 FT. Total 5 FT.

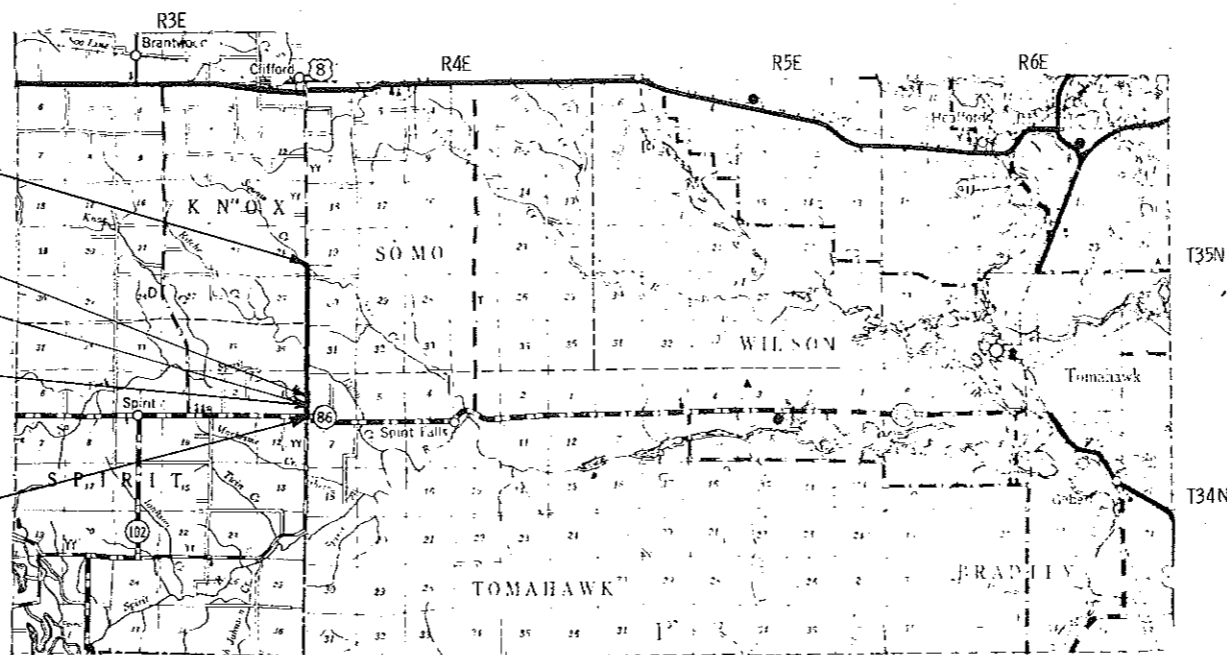
APPROVED FOR LINCOLN COUNTY
Francis X. Cox
 MAY 6 1968 COUNTY HIGHWAY COMMISSIONER

Design Designation

A. D. T.	1968	= 100
A. D. T.	1988	= 200
D. H. V.		= 30
D.		= 65%
T.		= 20%
V.		= 50 M. P. H.

END OF PROJECT S 1129(3)
 STA. 187+00 = STA. 187+00 BEGINNING OF
 PROJECT S 1129 (2)
 1334' N. & 14' W. OF THE SW COR.
 OF SEC. 19, T35N, R4E.
 STA. 37+90, PROJ. S 1129(3) =
 STA. 19+00, END PROJ. S 1129(1)
 STA. 30+46.5 TO STA. 31+09.5
 EXCEPTION TO NET & LENGTH
 STA. 26+90 PROJ. S 1129 (3) =
 STA. 8+00 BEG. PROJ. S 1129(1)

BEGIN PROJECT S 1129(3)
 STA. 18+80
 11' N. of the N.W. Cor.
 Sec. 7, T34N, R4E



Conventional Signs

State Line	-----	Culverts in Place	-----
County Line	-----	Culverts Required	-----
Township or Range Line	-----	Drop Inlet	-----
Section Line	-----	Power Pole	-----
New Right of Way Line	-----	Telephone or Telegraph Pole	-----
Present Right of Way Line	-----	Right of Way Markers	-----
Wire Fence { Woven	-----	Reference Stake for Hubs On-y	-----
Barbed	-----	Marsh	-----
Lot Line	-----	Hedge	-----
Corporate or City Limits	-----	Trees	-----
Property Line	-----	Ground Elevation	-----
Traveled Way or P.E.	-----	Grade Elevation	-----
Railroads	-----		
Base or Survey Line	-----		

Layout
 Scale 1" = 2 MILES

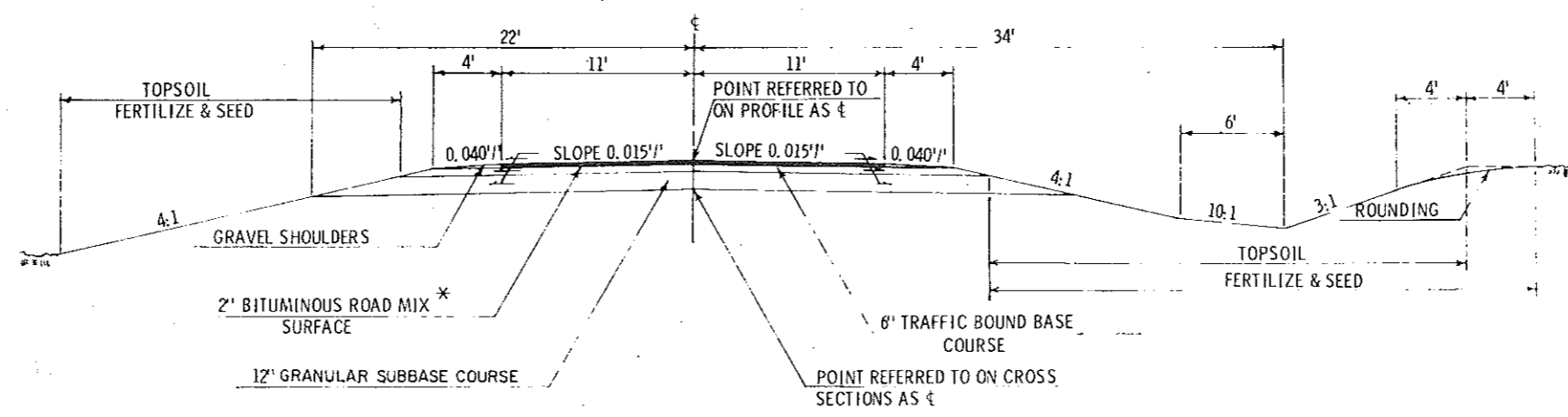
Total Net Length of Center Line = 3.174

STATE OF WISCONSIN
 DEPARTMENT OF TRANSPORTATION
 DIVISION OF HIGHWAYS

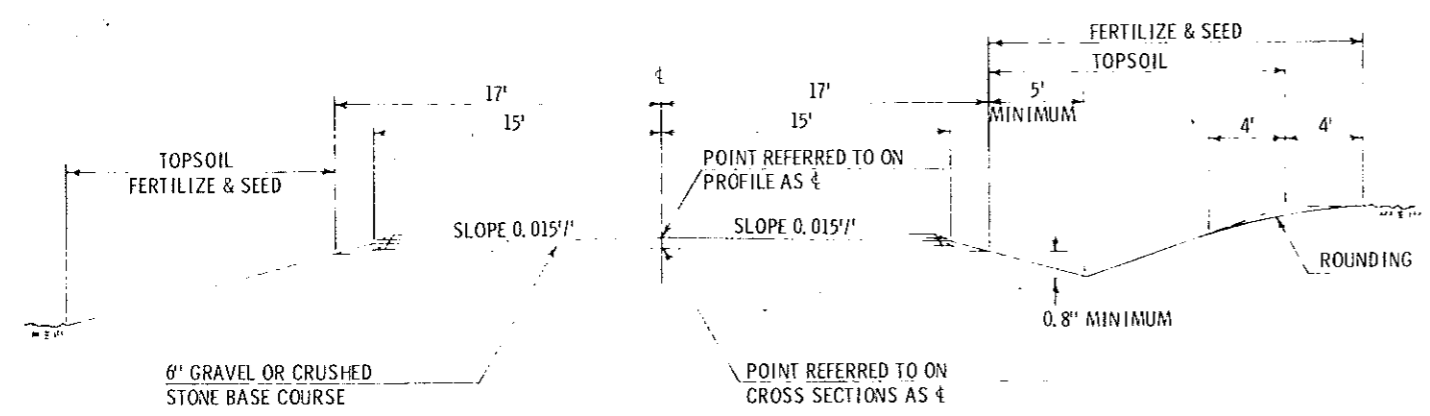
DATE: 4/15/68
 RECOMMENDED FOR APPROVAL: [Signature]
 DATE: 4/23/68
 APPROVED: [Signature]

FEDERAL HIGHWAY BUREAU OF PUBLIC ROADS

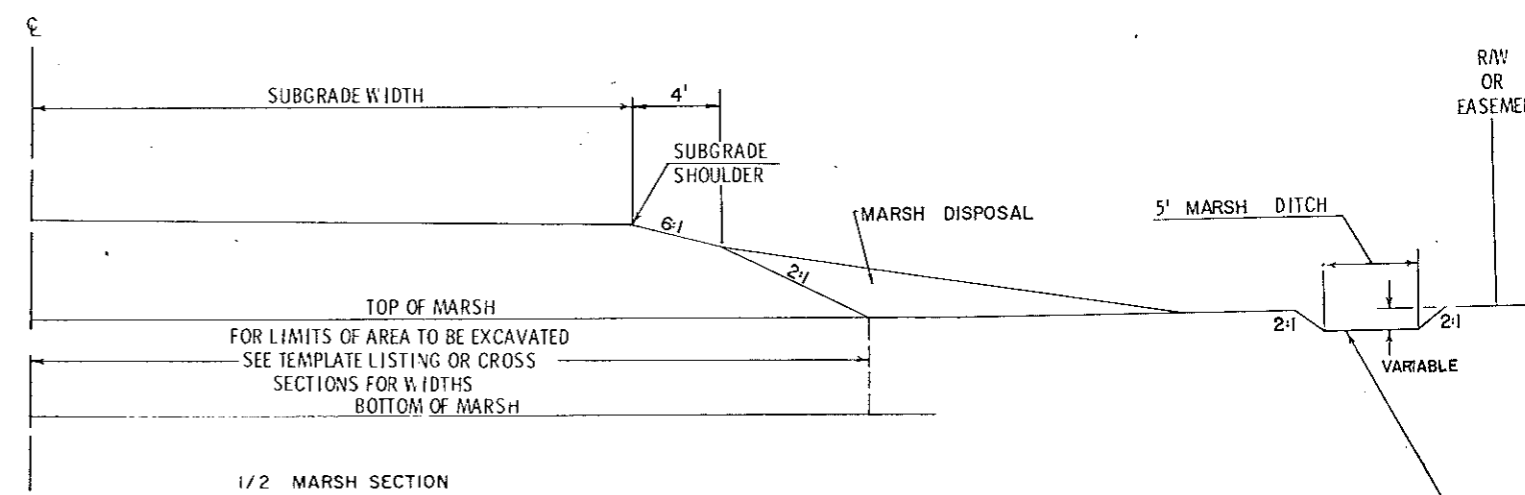
S 11290



FINISHED SECTION
STA. 18+80 - STA. 187+00 * NOT PART OF THIS CONTRACT



FINISHED SECTION SHOWING SIDE ROAD GRAVEL SURFACE
STA. 173+66 LT. & RT.



1/2 MARSH SECTION

CONSTRUCT MARSH DITCH
AT LOCATIONS AS DIRECTED BY
THE ENGINEER.

ESTIMATE OF QUANTITIES

THIS PROJECT IS TO BE EXECUTED UNDER THE STANDARD SPECIFICATIONS FOR ROAD AND BRIDGE CONSTRUCTION OF THE STATE HIGHWAY COMMISSION OF WISCONSIN-EDITION OF 1963, APPROVED OCTOBER 16, 1963, FEDERAL AID REQUIRED CONTRACT PROVISIONS APPROVED OCTOBER 29, 1963, AND SPECIAL PROVISIONS AS ATTACHED TO PROPOSALS.

CONTRACT NO. 1

SEC. NO.	STATION TO STATION	NET LENGTH OF CENTER LINE	CLEARING		GRUBBING		REMOVING OLD BRIDGE, STATION 86+32	UNCLASSIFIED EXCAVATION	MARSH EXCAVATION	EXCAVATION FOR STRUCTURES, BRIDGES	BORROW EXCAVATION	GRANULAR SUBBASE COURSE	FINISHING ROADWAY	TRAFFIC BOUND BASE COURSE	PRODUCING AND STOCKPILING AGGREGATE FOR BITUMINOUS ROAD MIX SURFACE	CONCRETE MASONRY, BRIDGES	BAR STEEL REINFORCEMENT, BRIDGES	CULVERT PIPE, CLASS III, 18-INCH	CULVERT PIPE, CLASS III, 24-INCH	APRON ENDWALLS FOR CULVERT PIPE, 18-INCH	APRON ENDWALLS, FOR CULVERT PIPE, 24-INCH	STRUCTURAL PLATE PIPE ARCH, 8 FT. SPAN	RIPRAP	HEAVY RIPRAP	STEEL PLATE BEAM GUARD	ANCHORAGES FOR STEEL PLATE BEAM GUARD	MARKER POSTS FOR RIGHT OF WAY	MAINTENANCE AND REPAIR OF HAUL ROADS	SALVAGED
			20101	20103	20104	20106																							
	ITEM NO.	UNIT	STATION	ACRE	STATION	ACRE	LUMP SUM	CU. YD.	CU. YD.	CU. YD.	CU. YD.	CU. YD.	LUMP SUM	TON	TON	CU. YD.	POUND	LIN. FT.	LIN. FT.	EACH	EACH	LIN. FT.	CU. YD.	CU. YD.	LIN. FT.	EACH	EACH	LUMP SUM	6
	18+80 - 187+00	16,757.00	6	5.3	6	4.1	1	93,889	16,993	435	3,855	29,000	1	23,100	6,100	141.1	17,400	456	390	32	16	54	20	600	822	8	64	1	8
	TOTAL	16,757.00	6	5.3	6	4.1	1	93,889	16,993	435	3,855	29,000	1	23,100	6,100	141.1	17,400	456	390	32	16	54	20	600	822	8	64	1	8

SEC. NO.	STATION TO STATION	NET LENGTH OF CENTER LINE	SEEDING	SODDING	FIELD OFFICE																									
						63001	63101	90001																						
	ITEM NO.	UNIT	SQ. YD.	SQ. YD.	LUMP SUM																									
	18+80 - 187+00	16,757.00	97,000	1,360	1																									
	TOTAL	16,757.00	97,000	1,360	1																									

APPLICABLE STANDARD DETAIL DRAWINGS

- 6-2.4.3 Mortar Rubble Masonry or Riprap for Culvert and Cattle Pass Endwalls
- 6-2.6.6 Apron Endwalls for Culvert Pipe and Pipe Arch
- 6-5.3.2 Structural Plate Pipe Arch & Corrugated Metal Pipe Arch
- 7-1.3.5 Marker Post & Marker Posts for Right of Way
- 7-2.4.13 Steel Plate Beam Guard & Steel Beam Median Guard
- 7-4.1.5 Construction Barricade
- 8-1.3.1 Ditch Checks, Mortar Rubble Masonry & Sod
- 9-1.1.5 Design and Layout Details for Side Road At Grade Intersections

GENERAL NOTES

1. When the quantity of the items of subbase, base or surface course is measured by the ton or cubic yard, the depth or thickness of the course shown on the plans is approximate and the actual thickness will depend on the distribution of material directed by the engineer.
2. Topsoil shall be placed to an approximate depth of 3" at the time of placing.
3. In balances containing marsh excavation, the fill quantity shown in the balance total on the plan sheets includes 10% of the marsh excavation as estimated.
4. E. B. S. all mouths of cuts as directed by the engineer in the field.
5. Bituminous Road Mix Surface not part of this contract.

CULVERT PIPE SCHEDULE

STATION	LOCATION		CULVERT PIPE		STRUCTURAL PLATE PIPE ARCH		APRON ENDWALLS		RIPRAP
	LT.	RT.	18"	24"	8 FT. SPAN 10-GAGE	18"	24"		
24+50		X	26				2		
29+00	X		26				2		
33+00		X	26				2		
35+53	X		26				2		
41+50	X			54				2	
46+30		X	26				2		
50+24		X	26				2		
57+29	X			44				2	
60+39		X	26				2		
74+63	X			54				2	
74+82		X	26				2		
100+00		X	26				2		
113+54	X			64				2	
121+00	X			60				2	
132+64		X		26				2	
132+80		X		26				2	
140+50		X	26				2		
147+50		X	26				2		
152+00		X	26				2		
164+55	X			62				2	
171+10		X	26				2		
173+66		X	46				2		
173+66		X	46				2		
180+86	X				54				20 CU. D
183+75		X	26				2		
TOTAL			456	390	54		32	16	20 CU. D.

MARKER POSIS FOR RIGHT OF-WAY

STA. - STA.	NO.
18+80- 40+00	13
40+00- 70+00	10
70+00-100+00	11
100+00-130+00	7
130+00-160+00	14
160+00-187+00	9
TOTAL	64

CLEARING AND GRUBBING

STA-STA	CLEARING		GRUBBING	
	ACRE	STA.	ACRE	STA.
18+80 - 20+00		0		0
20+00 - 21+00		1		1
21+00 - 24+00		0		0
24+00 - 25+00		1		1
25+00 - 27+00		0		0
27+00 - 29+00		2		2
29+00 - 33+00		0		0
33+00 - 52+00	0.7		0.2	
52+00 - 77+60	1.1		1.1	
77+60 - 110+00	2.8		2.4	
110+00 - 123+00	0.4		0.1	
123+00 - 132+00		0		0
132+00 - 134+00		2		2
134+00 - 137+00		0		0
137+00 - 149+00	0.1		0.1	
149+00 - 175+00		0		0
175+00 - 187+00	0.2		0.2	
TOTAL	5.3 ACRE	6 STA.	4.1 ACRE	6 STA.

SODDING

STATION-STATION	NO.	SIZE	SQ. YD.
19+00 - 28+00 LT. & RT.	22	6' X 15'	220
31+50 - 37+50 LT. & RT.	22	6' X 15'	220
59+50 - 63+50 LT. & RT.	28	6' X 15'	280
94+00 - 105+00 LT. & RT.	30	6' X 15'	300
132+00 - 142+00 LT. & RT.	34	6' X 15'	340
TOTAL			1,360

STEEL PLATE BEAM GUARD

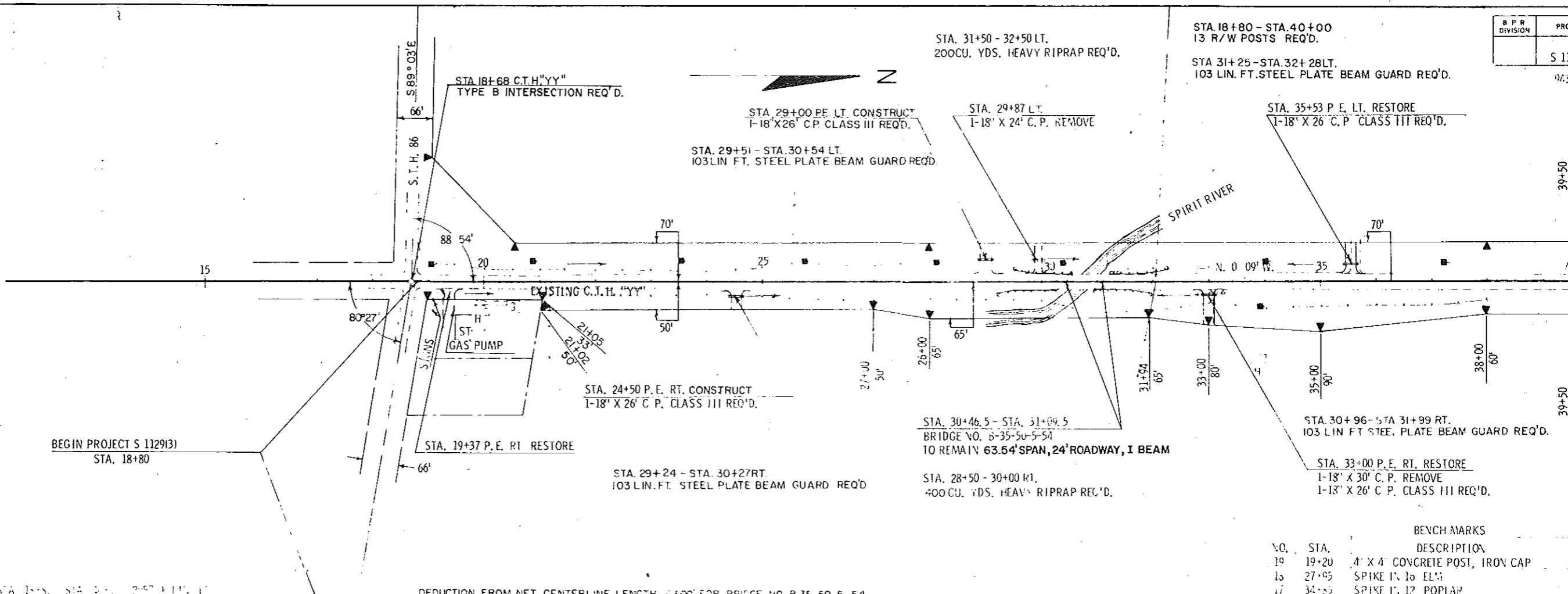
STATION-STATION	LOCATION	LIN. FT.	ANCHORAGES
29+24 - 30+27	RT.	103	1
29+51 - 30+54	LT.	103	1
30+96 - 31+99	RT.	103	1
31+25 - 32+28	LT.	103	1
84+70 - 86+75	RT.	205	2
84+70 - 86+75	LT.	205	2
TOTAL		822	8

EXCAVATION

STATION-STATION	UNCL.	MARSH	BORROW
18+80 - 45+61	17,712	7,182	
45+61 - 53+52	2,874	1	
53+52 - 85+88	28,885	8,194	
85+88 - 103+00	8,044	29	1,120
103+00 - 118+62	9,672	1,557	
118+62 - 141+75	9,367	30	
141+75 - 181+38	16,531		
181+38 - 187+00	504		2,735
SUBTOTAL	93,589	16,993	3,855
CHANNEL CHANGE STA. 85+75	300		
TOTAL	93,889	16,993	3,855

HEAVY RIPRAP

STATION-STATION	CU. YD.
28+50 - 30+00 RT.	400
31+50 - 32+50 LT.	200
TOTAL	600



NO.	STA.	BENCH MARKS DESCRIPTION
19	19+20	4' X 4' CONCRETE POST, IRON CAP
15	27+05	SPIKE I. 16 EL.
17	34+55	SPIKE I. 12 POPLAR

NET CENTERLINE LENGTH FROM STA 18+80 TO STA 38+00 = 1912.17'
 DEDUCTION FROM NET CENTERLINE LENGTH 1400' FOR BRIDGE NO B-35-50-5-54

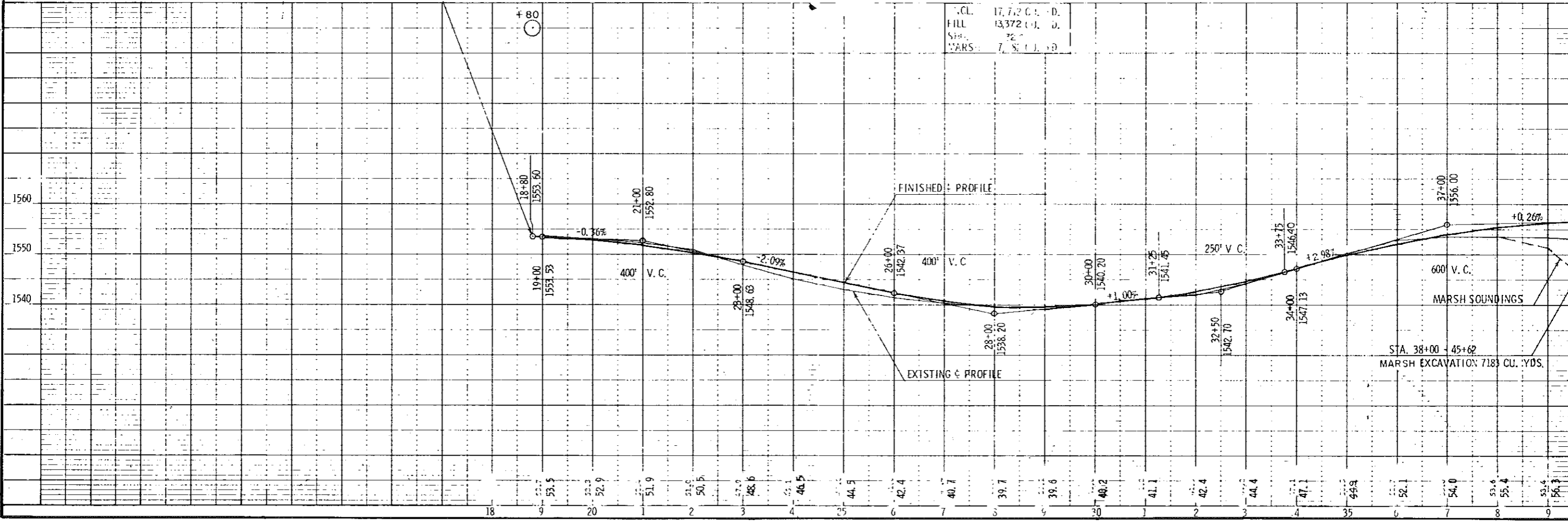


PLATE 1 - PLAN - PROFILE & BENCH MARKS
 MADE AND PRINTED IN U.S.A.
 CHARLES BRONKHORST COMPANY, INC.

STA. 40+00 - STA. 70+00
10 RAW POSTS REQ'D.

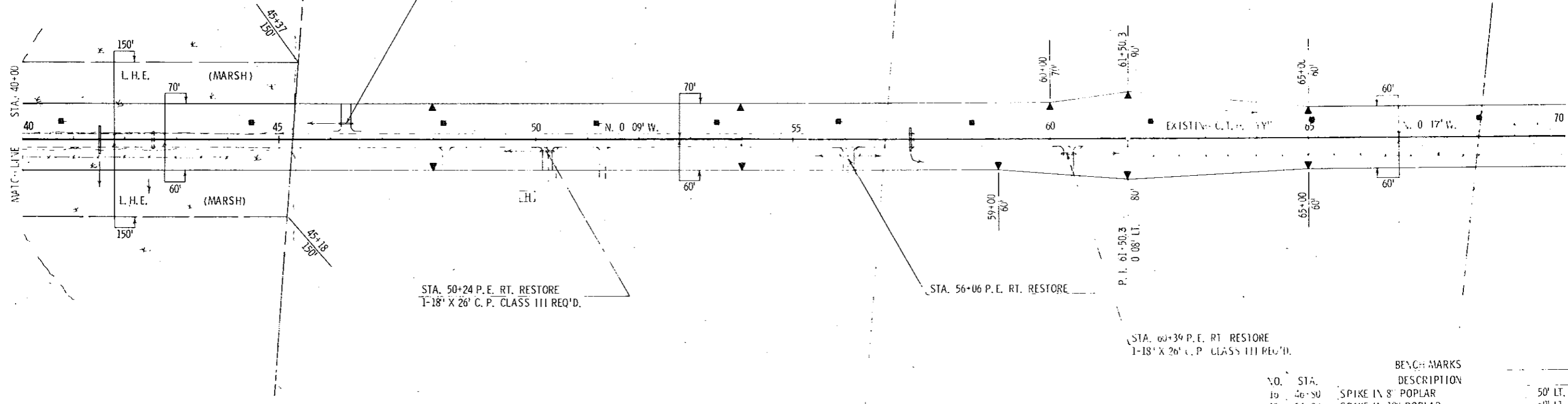


STA. 46+30 P.E. LT. CONSTRUCT
1-18' X 26' C.P. CLASS III REQ'D.

STA. 50+24 P.E. RT. RESTORE
1-18' X 26' C.P. CLASS III REQ'D.

STA. 56+06 P.E. RT. RESTORE

STA. 60+39 P.E. RT. RESTORE
1-18' X 26' C.P. CLASS III REQ'D.



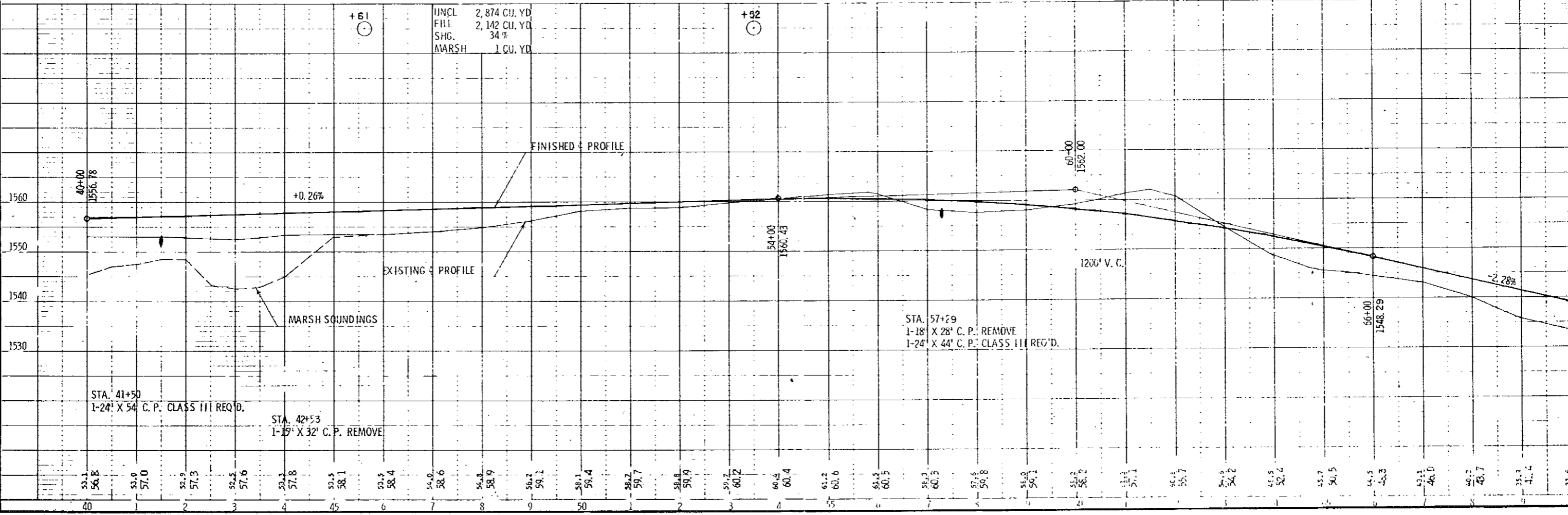
NET CENTERLINE LENGTH STA. 40+00 - STA. 70+00 = 30.00 STATION

BENCH MARKS		
NO.	STA.	DESCRIPTION
10	46+30	SPIKE IN 8' POPLAR
15	54+00	SPIKE IN 10' POPLAR
14	65+55	SPIKE IN 10' POPLAR

UNCL. 2,874 CU. YD.
FILL 2,142 CU. YD.
SHG. 34 %
MARSH 1 CU. YD.

+61

+92

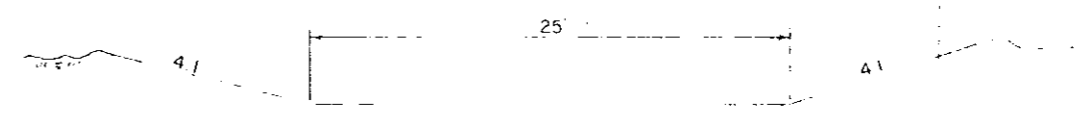
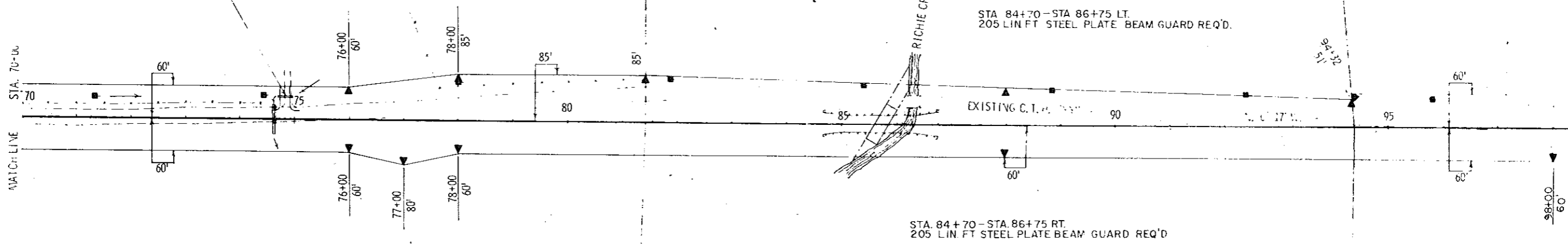


UNCL. 2,874 CU. YD.
 FILL 2,142 CU. YD.
 SHG. 34 %
 MARSH 1 CU. YD.

STA. 74+82 P.E. LT. RESTORE
1-24' X 26' C.P. CLASS III REQ'D.

STA. 70+00 - STA. 100+00
11 RAY POSTS REQ'D.

STA. 100+00 P.E. LT. RESTORE
1-15' X 16' C.P. REMOVE
1-18' X 26' C.P. CLASS III REQ'D.



CHANNEL CHANGE DETAIL

STA. 85+75
300 CU YDS WASTE

NET CENTERLINE LENGTH STA. 70+00 - STA. 100+00 300.00 LIN. FT.

BENCH MARKS

NO.	STA.	DESCRIPTION
10	70+00	SPIKE IN 10' POPLAR
11	80+20	SPIKE IN 7' POPLAR
12	90+00	SPIKE IN 8' PINE

UNCL. 28,885 CU. YD
FILL 22,802 CU. YD
SHG. 27%
MARSH 8,194 CU. YD

UNCL. 1,044 CU. YDS.
FILL 5,935 CU. YDS.
SHG. 30%
MARSH 1,120 CU. YDS.

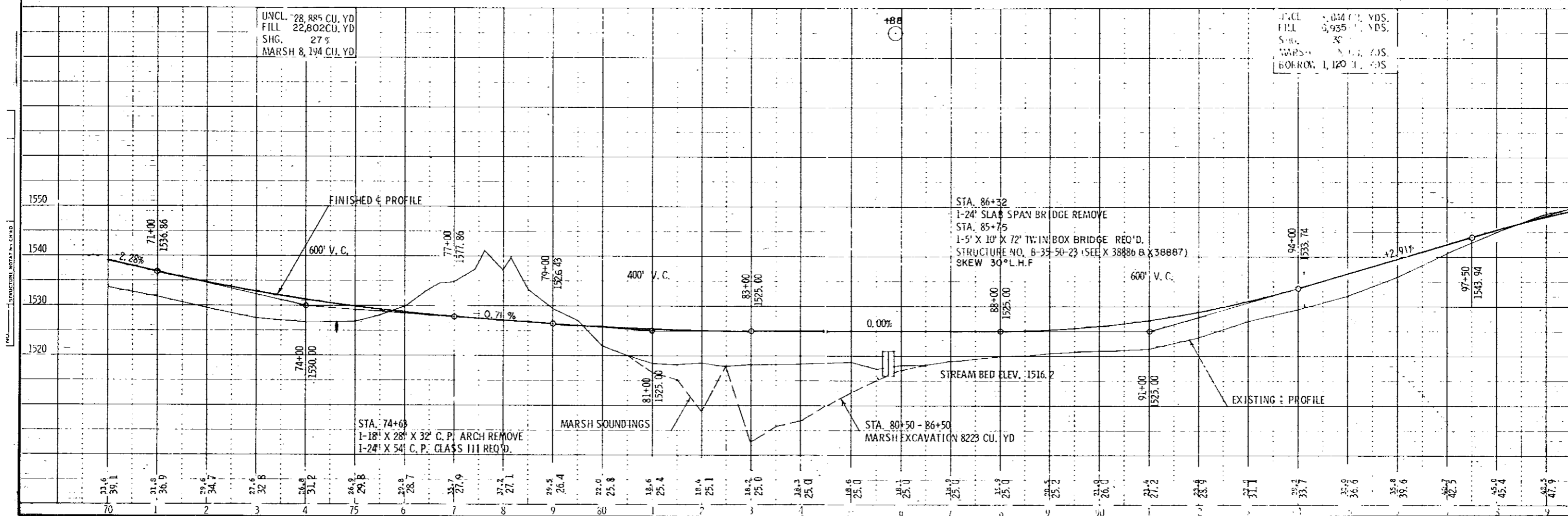
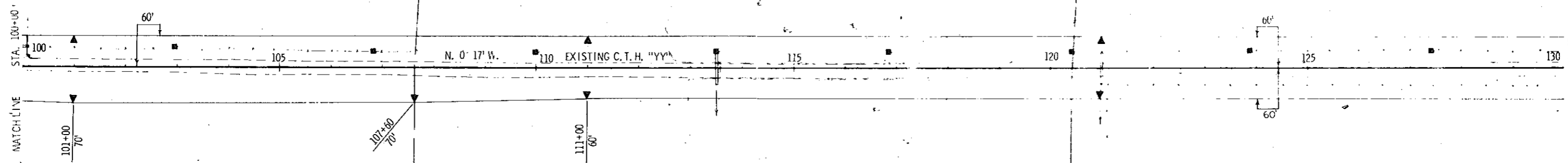


PLATE 1 PLAN PROFILE

R. P. R. DIVISION	PROJECT	SHEET NUMB
	S 1129(3)	7

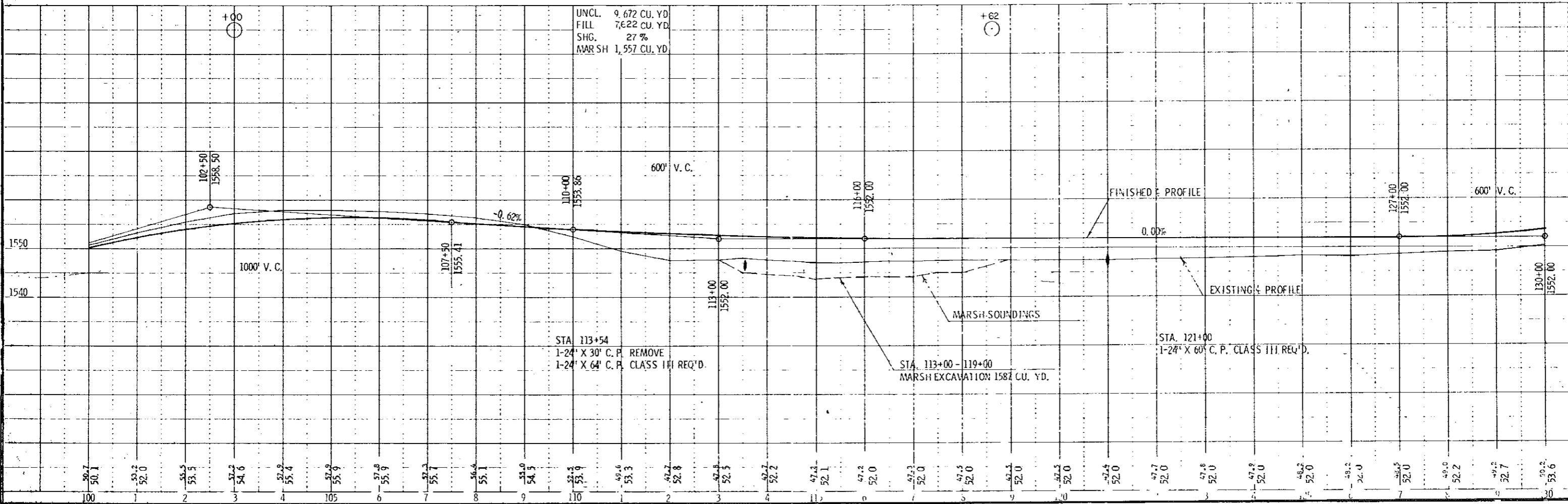
9434-2-70

STA. 100+00 - STA. 130+00
7 R/W POSTS REQ'D.



NET CENTERLINE LENGTH STA. 100+00 - STA. 130+00 = 300.00 FT.

NO.	STA.	BENCH MARKS DESCRIPTION	ELEV.
10	102+25	SPIKE IN 3" WHITE BIRCH	60' RT. 1559.
9	112+00	SPIKE IN 3" POPLAR	65' LT. 1548.
8	122+25	SPIKE IN 4" POPLAR	65' RT. 1547.



Sheet 112.5

PLATE 1 - PLAN - PROFILE

PLAN & PROFILE STA. 100+00

STA. 130+00 - STA. 160+00
14 RW POSTS REQ'D.

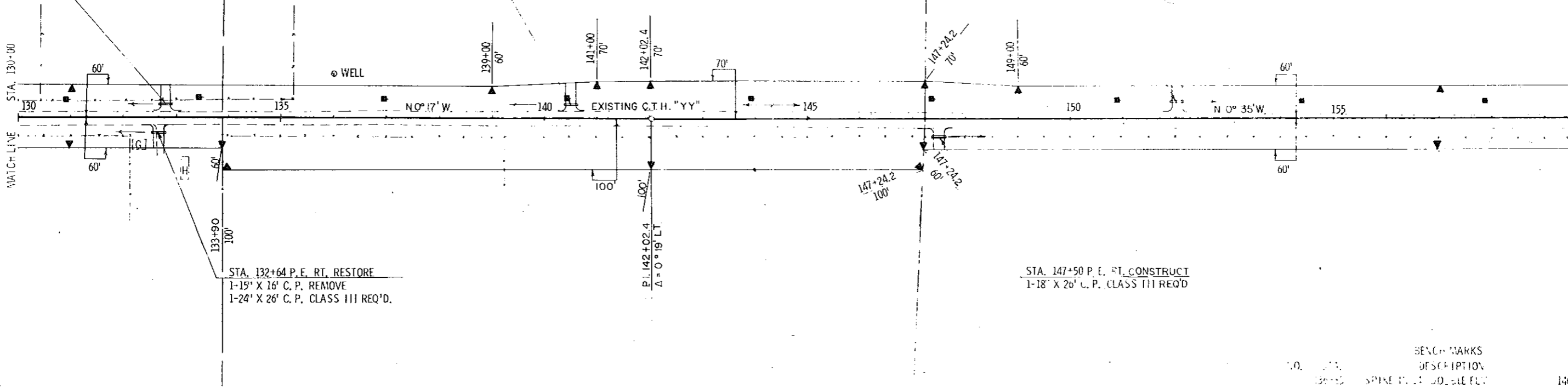
STA. 152+00 P.E. LT. CONSTRUCT
1-18' X 26' C.P. CLASS III REQ'D.

STA. 147+50 P.E. RT. CONSTRUCT
1-18' X 26' C.P. CLASS III REQ'D.

STA. 140+50 P.E. LT. CONSTRUCT
1-18' X 26' C.P. CLASS III REQ'D.

STA. 132+80 P.E. LT. CONSTRUCT
1-24' X 26' C.P. CLASS III REQ'D.

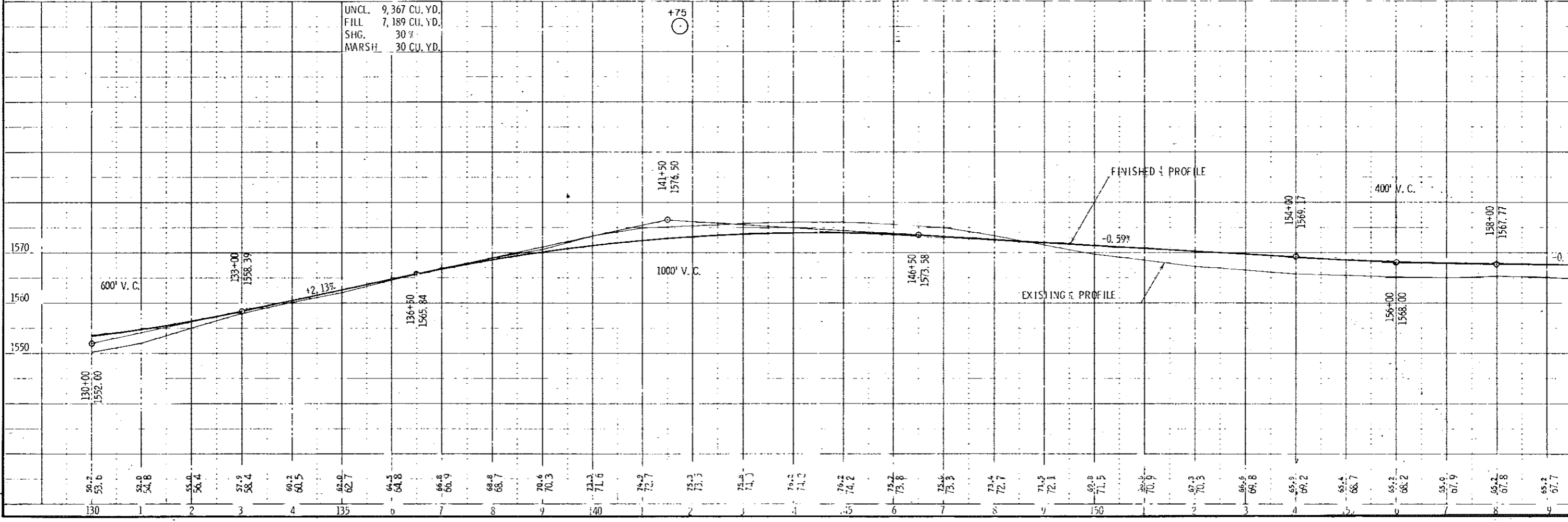
STA. 132+64 P.E. RT. RESTORE
1-15' X 16' C.P. REMOVE
1-24' X 26' C.P. CLASS III REQ'D.



NET CENTERLINE LEVELS - STA. 130+00 - STA. 160+00 - 3" = 1' VERTICAL, FT.

NO.	DESCRIPTION	ELEVATION
130+05	SPINE POINT - DOUBLE END	140'
140+95	SPINE POINT - POPUP	120'
150+00	SPINE POINT - POPUP	120'

UNCL.	9,367 CU. YD.
FILL	7,189 CU. YD.
SHG.	30%
MARSH	30 CU. YD.



PLAN PROFILE

PLAN & PROFILE STA

STA. 160+00 - STA. 187+00
9 R/W POSTS REQ'D.

STA. 173+66 TOWN ROAD LT. RESTORE
TYPE B INTERSECTION REQ'D.
1-18" X 20' C.P. REMOVE
1-18" X 46' C.P. CLASS III REQ'D.

STA. 171+10 P.E. RT. RESTORE
1-18" X 26' C.P. CLASS III REQ'D.

STA. 183+75 P.E. RT. RESTORE
1-18" X 26' C.P. CLASS III REQ'D.

STA. 173+66 TOWN ROAD RT.
RESTORE TYPE B INTERSECTION REQ'D.
1-18" X 26' C.P. REMOVE
1-18" X 46' C.P. CLASS III REQ'D.

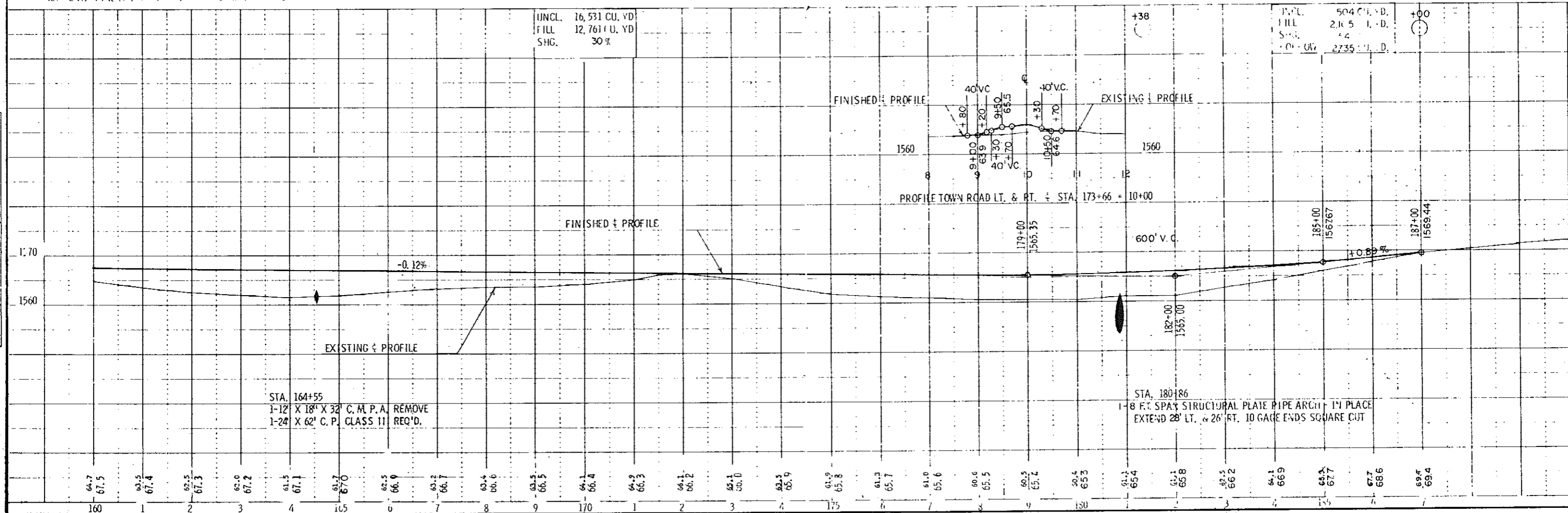
END OF PROJECT S 1129(3)
STA. 187+00 - STA. 187+00 BEGINNING OF
PROJECT S 1129(2)

NO.	STA.	DESCRIPTION	90' LT.
5	187+00	SPIKE IN 10 POPLAR	90' LT.
4	187+55	SPIKE IN 10 POPLAR	105' LT.
3	187+75	SPIKE IN 5 POPLAR	5' LT.
2	187+80	SPIKE IN 20 BELLOW - 1-18"	90' LT.

NET CENTERLINE ELEV. STA. 187+00 = 2234.00 LIN. E.

UNCL. 16,531 CU. YD.
FILL 12,761 CU. YD.
SHG. 30%

UNCL. 504 CU. YD.
FILL 2,105 CU. YD.
SHG. 42%
TOTAL 2,735 CU. YD.



STA. 164+55
1-12" X 18" X 32' C.M.P.A. REMOVE
1-24" X 62' C.P. CLASS II REQ'D.

STA. 180+86
1-8 FT. SPAN STRUCTURAL PLATE PIPE ARCH IN PLACE
EXTEND 28' LT. & 26' RT. TO GAGE ENDS SQUARE CUT

IN THE EVENT OF A DISCREPANCY BETWEEN THE PLANS AND PROFILES, THE PROFILES SHALL CONTROL.