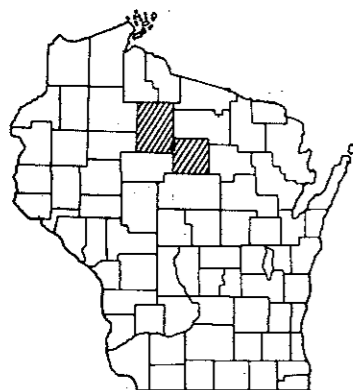


INDEX OF SHEETS

- SHEET NO. 1 TITLE
- SHEET NO. 2-2A TYPICAL CROSS SECTIONS
- SHEET NO. 2 ESTIMATE OF QUANTITIES
- SHEET NO. 2A MISCELLANEOUS QUANTITIES
- SHEET NO. - RIGHT OF WAY PLAT
- SHEET NO. 3-9 PLAN AND PROFILE STA. 187+00 TO STA. 381+73
- SHEET NO. 10-10.7 STANDARD DETAILS
- SHEET NO. DRAINAGE STRUCTURES
- SHEET NO. 11-22 MACHINE COMPUTATIONS



STATE OF WISCONSIN

STATE HIGHWAY COMMISSION OF WISCONSIN

PLAN AND PROFILE OF PROPOSED

S.T.H. 86 - CLIFFORD

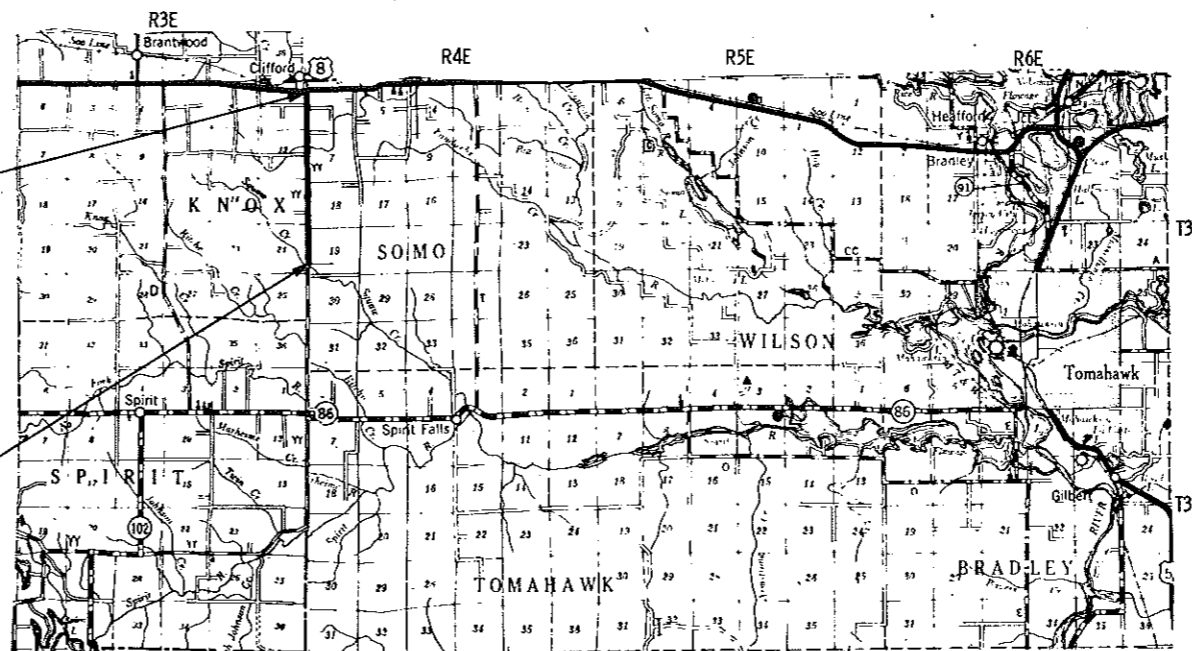
C.T.H. "YY"

LINCOLN COUNTY - PRICE COUNTY

PROJECT S 1129(2)

COUNTY AND HIGHWAY	ROUTE AND SECTION	CLASS AND AGREEMENT		S.P.R. REGION DIVISION
		STATE	FEDERAL	
72.6	1129.0	11.2		4 WIS.

PLAN 1 IN. = 100 FT.
 SCALES PROFILE HOR. 1 IN. = 100 FT. VERT. 1 IN. = 10 FT.



DESIGN DESIGNATION

- ADT 1968 = 100
- ADT 1988 = 200
- DHV = 30
- D = 65%
- T = 20%
- V = 50 MPH

END OF PROJECT S 1129(2)
 STA. 381+73
 2'E. & 563.8' S. of the N.W. Cor. of
 Sec. 6, T35N, R4E

BEGIN PROJECT S 1129(2)
 STA. 187+00
 1334' N. & 14' W. of the
 S.W. Cor. of Sec. 19, T35N, R4E

CONVENTIONAL SIGNS

STATE LINE.....	CULVERTS IN PLACE.....
COUNTY LINE.....	CULVERTS REQUIRED.....
TOWNSHIP OR RANGE LINE.....	DROP INLET.....
SECTION LINE.....	POWER POLE.....
NEW RIGHT OF WAY LINE.....	TELEPHONE OR TELEGRAPH POLE.....
PRESENT RIGHT OF WAY LINE.....	RIGHT OF WAY MARKERS.....
WIRE FENCE {WOVEN.....	REFERENCE STAKE FOR HUBS ONLY.....
{BARBED.....	MARSH.....
LOT LINE.....	HEDGE.....
CORPORATE OR CITY LIMITS.....	TREES.....
PROPERTY LINE..... PL = 32.8	GROUND ELEVATION..... DATUM LINE.....
TRAVELED WAY OR P.E.....	GRADE ELEVATION..... DATUM LINE.....
RAILROADS.....	E.B.S..... EXCAVATION BELOW SUBGRADE.....
BASE OR SURVEY LINE.....	

LAYOUT

SCALE 1" = 2 MI.

TOTAL NET LENGTH OF CENTERLINE = 3.688 MI.

APPROVED FOR LINCOLN COUNTY
Francis X Fox
 JUN 26 1967
 COUNTY HIGHWAY COMMISSIONER
 Date Title

STATE HIGHWAY COMMISSION	
SURVEYOR	J.W.
DIVISION COMPUTER	E.M.
DISTRICT CHECKER	G.W.
CORRECT:	
DATE	5/19/67
RECOMMENDED FOR APPROVAL	
DATE	5/26/67
APPROVED	
DATE	5/26/67
DEPARTMENT BUREAU	
APPROVED	

ESTIMATE OF QUANTITIES

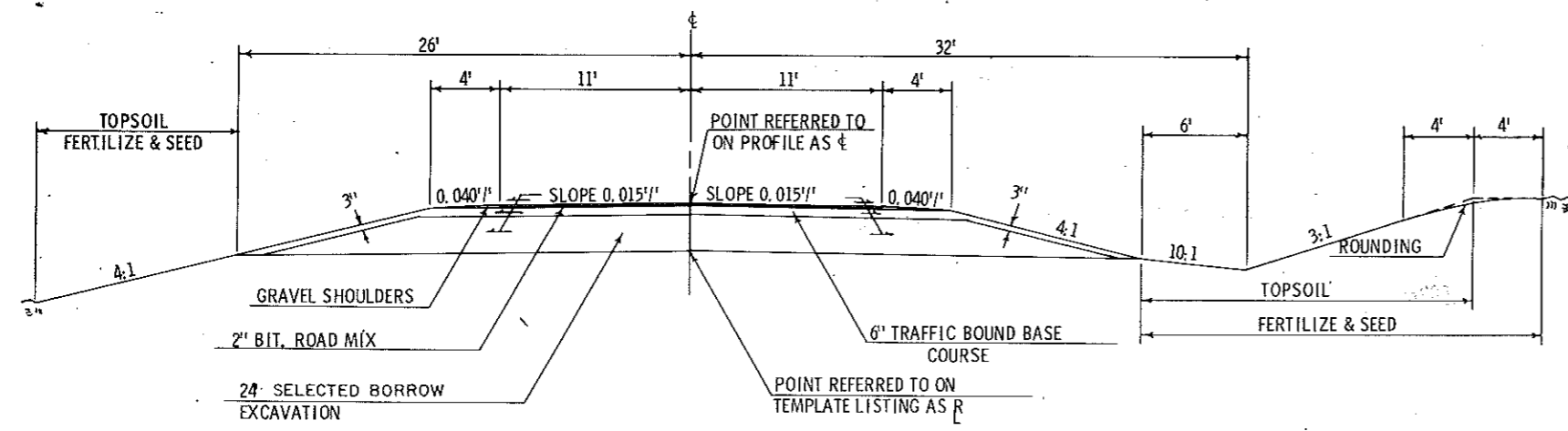
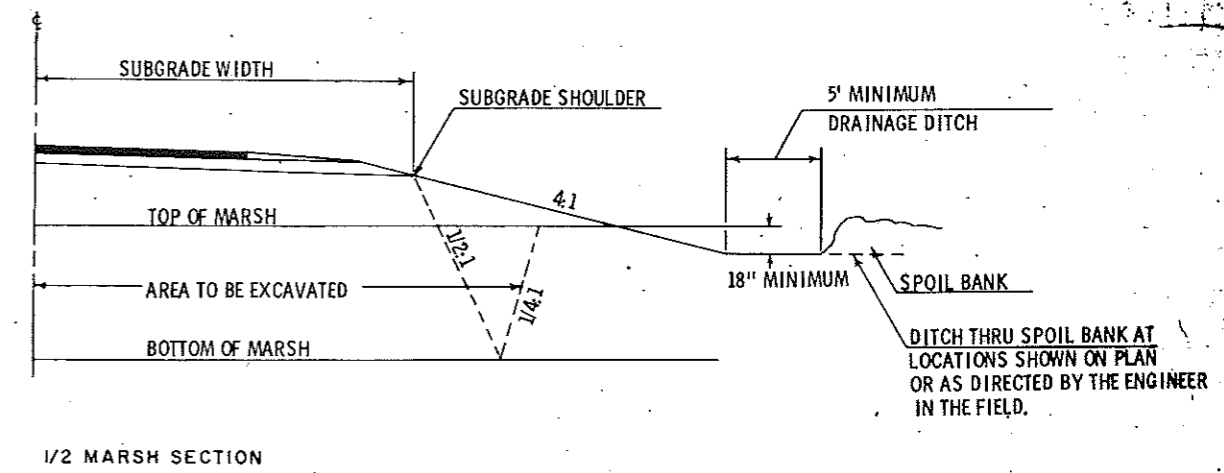
WISCONSIN REGION	PROJECT	SHEET NO.
	S 1129(2)	2

THIS PROJECT IS TO BE EXECUTED UNDER THE STANDARD SPECIFICATIONS FOR ROAD AND BRIDGE CONSTRUCTION OF THE STATE HIGHWAY COMMISSION OF WISCONSIN EDITION OF 1963, APPROVED OCTOBER 16, 1963, FEDERAL AID REQUIRED CONTRACT PROVISIONS APPROVED OCTOBER 29, 1963, AND SPECIAL PROVISIONS AS ATTACHED TO PROPOSALS.

CONTRACT 1

SEC. NO.	STATION TO STATION	NET LENGTH OF CENTER LINE	CLEARING	CLEARING	GRUBBING	GRUBBING	REMOVING OLD CULVERT, STATION 316+30	UNCLASSIFIED EXCAVATION	MARSH EXCAVATION	BORROW EXCAVATION	SELECTED BORROW EXCAVATION	FINISHING ROADWAY	TRAFFIC BOUND BASE COURSE	PRODUCING AND STOCKPILING AGGREGATE FOR BITUMINOUS ROAD MIX SURFACE	CULVERT PIPE, CLASS III, 18-INCH	CULVERT PIPE, CLASS III, 24-INCH	CULVERT PIPE, CLASS III, 30-INCH	APRON ENDWALLS FOR CULVERT PIPE, 18-INCH	APRON ENDWALLS FOR CULVERT PIPE, 24-INCH	APRON ENDWALLS FOR CULVERT PIPE, 30-INCH	STRUCTURAL PLATE PIPE ARCH, 10-FT SPAN	RIPRAP	MARKER POSTS	MARKER POSTS FOR RIGHT-OF-WAY	MAINTENANCE AND REPAIR OF HAUL ROADS	LANDMARK REFERENCE MONUMENTS	TOPSOIL	FERTILIZER	SEEDING	SEEDING
	ITEM NO.		20101	20103	20104	20106	20301	20503	20505	20801	20811	21301	30502	40411	52003	52005	52007	52061	52063	52065	52725	60601	61421	61422	61801	62101	62501	62901	63001	63101
	UNIT	LIN. FT.	STATION	ACRE	STATION	ACRE	LUMP SUM	CU. YD.	CU. YD.	CU. YD.	CU. YD.	LUMP SUM	TON	TON	LIN. FT.	LIN. FT.	LIN. FT.	EACH	EACH	EACH	LIN. FT.	CU. YD.	EACH	EACH	LUMP SUM	EACH	SQ. YD.	CWT.	SQ. YD.	SQ. YD.
	187+00 - 381+73	19,473.0	3	5.4	3	5.6	1	52,356	491	961	56,565	1	24,460	6,740	626	558	176	42	18	4	70	26	8	54	1	2	63,100	69	76,500	64
TOTAL		19,473.0	3	5.4	3	5.6	1	52,356	491	961	56,565	1	24,460	6,740	626	558	176	42	18	4	70	26	8	54	1	2	63,100	69	76,500	64

CONTRACT 1		NET LENGTH OF CENTER LINE	MEDIUM RANDOM RIPRAP	FIELD OFFICE
SEC. NO.	STATION TO STATION	LIN. FT.	CU. YD.	LUMP SUM
	187+00 - 381+73	19,473.0	104	1
TOTAL		19,473.0	104	1



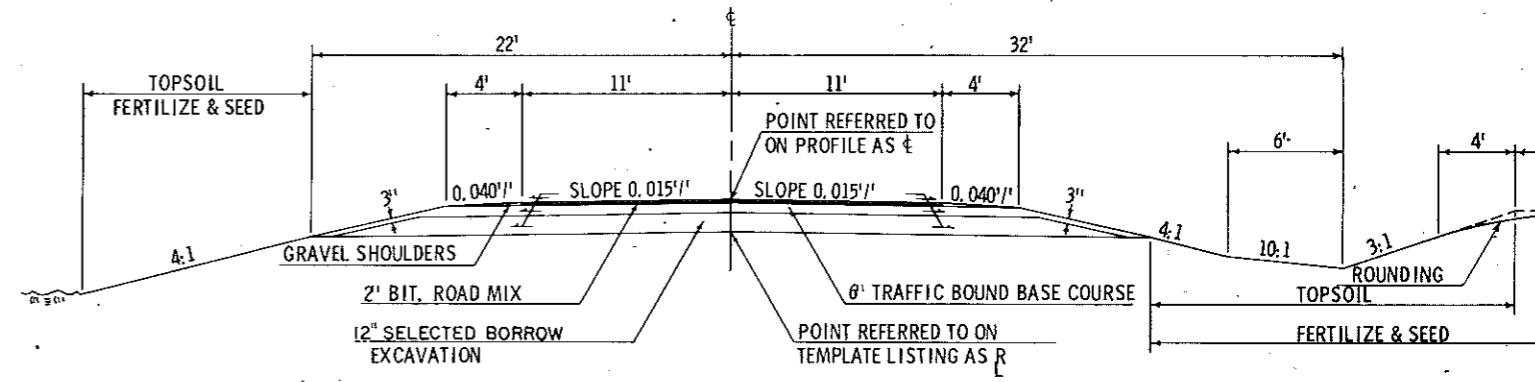
STA. 187+00 - 205+00
 STA. 214+00 - 238+00
 STA. 265+00 - 305+00
 STA. 318+00 - 355+00

- APPLICABLE STANDARD DETAIL DRAWINGS**
- 6-2.4.3 Mortar Rubble Masonry or Riprap for Culvert & Cattle Pass Endwalls
 - 6-2.6.5 Apron Endwalls for Culvert Pipe and Pipe Arch
 - 6-5.3.2 Structural Plate Pipe Arch & Corrugated Metal Pipe Arch
 - 7-1.3.5 Marker Post & Marker Posts for Right of Way
 - 7-4.1.5 Construction Barricade
 - 8-1.3.1 Ditch Checks, Mortar Rubble Masonry & Sod
 - 9-1.1.4 Design and Layout Details for Side Road at Grade Intersections
 - 12-1.1.2 Landmark Reference Monuments

- GENERAL NOTES**
1. When the quantity of the items of subbase, base or surface course is measured for payment by the ton or cubic yard, the depth or thickness of the course shown on the plans is approximate and the actual thickness will depend on the distribution of the material directed by the engineer.
 2. Topsoil shall be placed to an approximate depth of 3" at the time of placing.
 3. In balances containing marsh excavation, the fill quantity shown in the balance total on the plan sheets includes 10% of the marsh excavation as estimated subsidence.
 4. E. B. S. all mouths of cuts as directed by the engineer in the field.
 5. Bituminous Road Mix Surface not part of this contract.

CULVERT PIPE SCHEDULE

STATION	APP.	LOCATION		CULVERT PIPE CLASS III			10' SPAN STRUCTURAL PLATE PIPE ARCH	APRON ENDWALLS			RIPRAP CU. YD.	MARKER POSTS	
		LT.	RT.	18'	24'	30'		18'	24'	30'			
189+50	P.E.		X	26				2					
196+30		X			60				2				
198+85	P.E.		X	26				2					
208+25	P.E.	X		26				2					
219+03		X			54				2				
233+90	T.R.	X		46				2					
235+80		X			50				2				
238+85	P.E.	X		26				2					
238+85	P.E.		X	26				2					
240+45	P.E.		X	26				2					
242+85		X				84				2			
247+60		X				92				2			
251+00	P.E.		X	26				2					
256+70	P.E.		X	26				2					
258+25	P.E.		X	26				2					
268+09		X			58				2				
274+07	P.E.	X		26				2					
281+04		X			58				2				
284+00	P.E.		X	26				2					
294+78		X			54				2				
312+75	P.E.		X	26				2					
312+78	P.E.	X		26				2					
315+50		X					70			26.0		8	
317+67	P.E.		X	26				2					
331+90	T.R.		X	46				2					
344+00	P.E.		X	26				2					
345+16		X			54				2				
358+34	T.R.	X		46				2					
358+34	T.R.		X	46				2					
363+97		X			100				2				
376+00	P.E.		X	26				2					
378+22	P.E.		X	26				2					
381+47		X			70				2				
TOTALS					626	558	176	70	42	18	4	26.0	8



FINISHED SECTION
 STA. 205+00 - 214+00
 STA. 238+00 - 265+00
 STA. 305+00 - 318+00
 STA. 355+00 - 381+73

CLEARING & GRUBBING

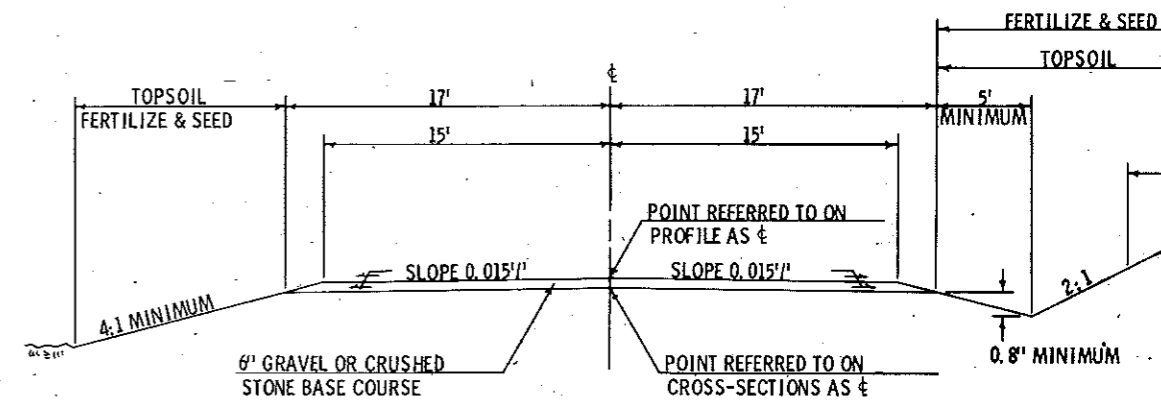
LOCATION STATION - STATION	CLEARING ACRE	STATION	GRUBBING ACRE	STATION
187+00 - 203+00	0.2		0.2	
203+00 - 209+00	0.2		0.4	
209+00 - 227+00	0.6		0.6	
227+00 - 234+00		0		0
234+00 - 235+00		1		1
235+00 - 239+00		0		0
239+00 - 280+00	1.4		1.4	
280+00 - 282+00		0		0
282+00 - 307+00	0.6		0.6	
307+00 - 313+00		0		0
313+00 - 314+00		1		1
314+00 - 315+00		0		0
315+00 - 316+00		1		1
316+00 - 318+00		0		0
318+00 - 381+73	2.4		2.4	
TOTALS	5.4	3	5.6	3

SODDING

LOCATION	TYPE	SIZE	NO.	SQ. YDS.
202+00 - 212+00	LT. & RT.	CHECKS	34	340
369+00 - 381+00	LT. & RT.	CHECKS	50	500
TOTAL				840

EXCAVATION

STATION - STATION	CU. YD. UNCLASSIFIED	CU. YD. MARSH	CU. YD. BORROW
187+00 - 200+20	2589		
200+20 - 206+33	811		
206+33 - 244+50	9596		
244+50 - 254+62	7661		
254+62 - 268+44	4155		
268+44 - 277+19	2047		
277+19 - 286+00	1340		858
286+00 - 314+00	3466 (Haul in 1000 Cu. Yds.)		
314+00 - 341+00	7668	491	
341+00 - 358+00	2490 (Haul out 1000 Cu. Yds.)		
358+00 - 363+37	3834		
363+37 - 381+73	6699		103
TOTALS	52356	491	961

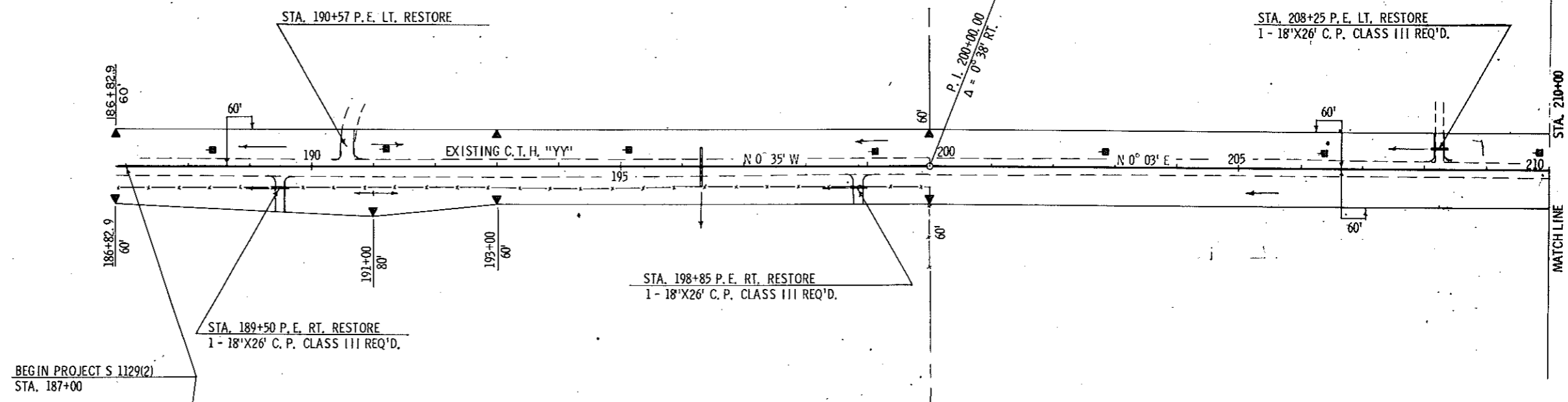


FINISHED SECTION SHOWING SIDE ROAD GRAVEL SURFACE
 STA. 233+90 LT.
 STA. 305+50 LT.
 STA. 331+90 LT.
 STA. 358+34 LT. & RT.

MARKER POST FOR RIGHT OF WAY

STATION - STATION	NO.
187+00 - 210+00	7
210+00 - 240+00	8
240+00 - 270+00	8
270+00 - 300+00	6
300+00 - 330+00	8
330+00 - 360+00	13
360+00 - 381+73	4
TOTAL	54

STA. 187+00 - STA. 210+00
7 R/W POSTS REQ'D.

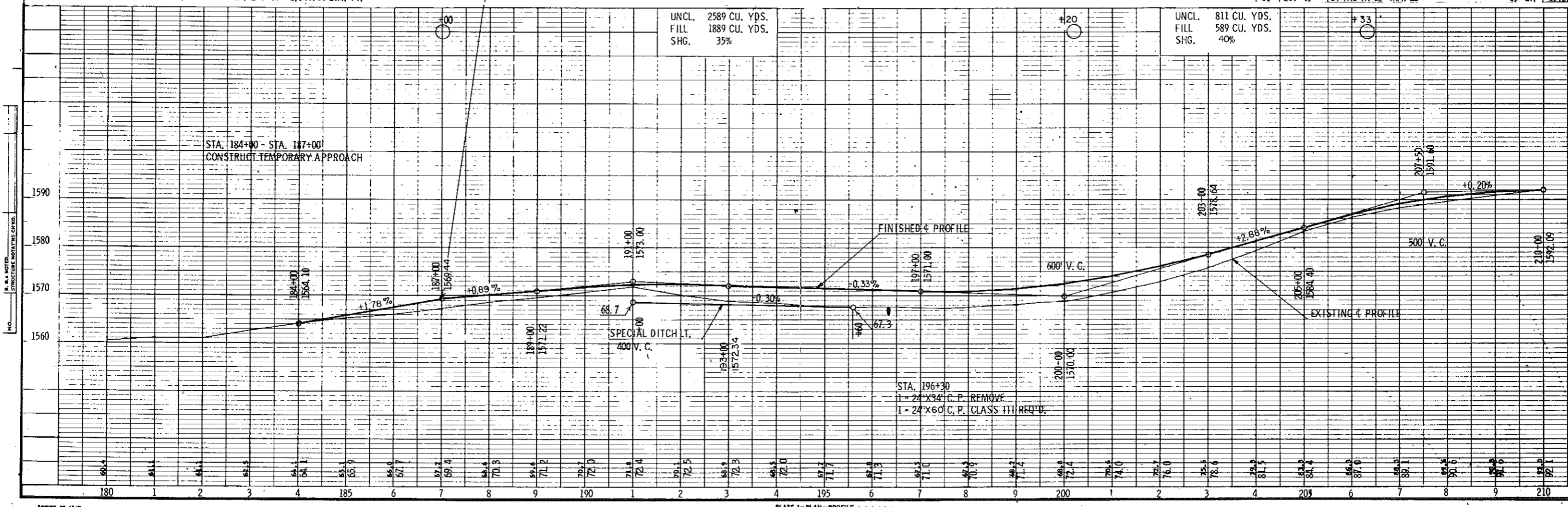


BEGIN PROJECT S 1129(2)
STA. 187+00

NET CENTERLINE LENGTH STA. 187+00 - STA. 210+00 = 2,300.00 LIN. FT.

BENCH MARKS			
NO.	STA.	DESCRIPTION	ELEV.
3	176+75	SPIKE IN 8" POPLAR	85' RT. 1560.7
2	185+30	SPIKE IN 20' YELLOW BIRCH	90' LT. 1564.7
1	194+90	SPIKE IN 12" POPLAR	60' LT. 1571.3
11	209+63	SPIKE IN 12' MAPLE	65' LT. 1592.2

UNCL.	2589 CU. YDS.	UNCL.	811 CU. YDS.
FILL	1889 CU. YDS.	FILL	589 CU. YDS.
SHG.	35%	SHG.	40%



NO. 11-14 NOTED. STRUCTURE NOTIFIED CHFD.

BARBER NO. 41-10

PLATE 1 - PLAN - PROFILE C. P. & E. C.
MADE AND PRINTED IN U.S.A.
AMERICAN BRIDGE COMPANY, INC.

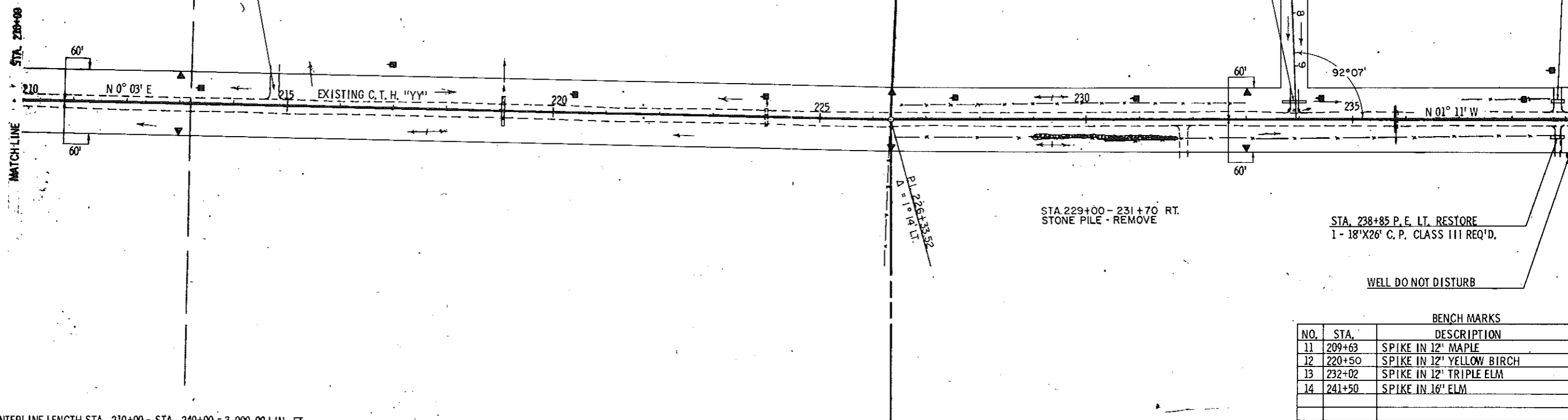
PLAN & PROFILE STA. 187+00 -

STA. 210+00 - 240+00
8 R/W POSTS REQ'D.

STA. 214+76 P.E. LT. RESTORE

STA. 233+90 TOWN ROAD LT. RESTORE
1 - 15"X16" C. P. REMOVE
1 - 18"X46" C. P. CLASS III REQ'D.
TYPE "E" INTERSECTION REQ'D.

STA. 238+85 P.E. LT. RESTORE
1 - 18"X26" C. P. CLASS III REQ'D.



NET CENTERLINE LENGTH STA. 210+00 - STA. 240+00 = 3,000.00 LIN. FT.

BENCH MARKS		
NO.	STA.	DESCRIPTION
11	209+63	SPIKE IN 12' MAPLE
12	220+50	SPIKE IN 12' YELLOW BIRCH
13	232+02	SPIKE IN 12' TRIPLE ELM
14	241+50	SPIKE IN 16' ELM

UNCL. 9596 CU. YDS.
FILL 6958 CU. YDS.
SHG. 40%

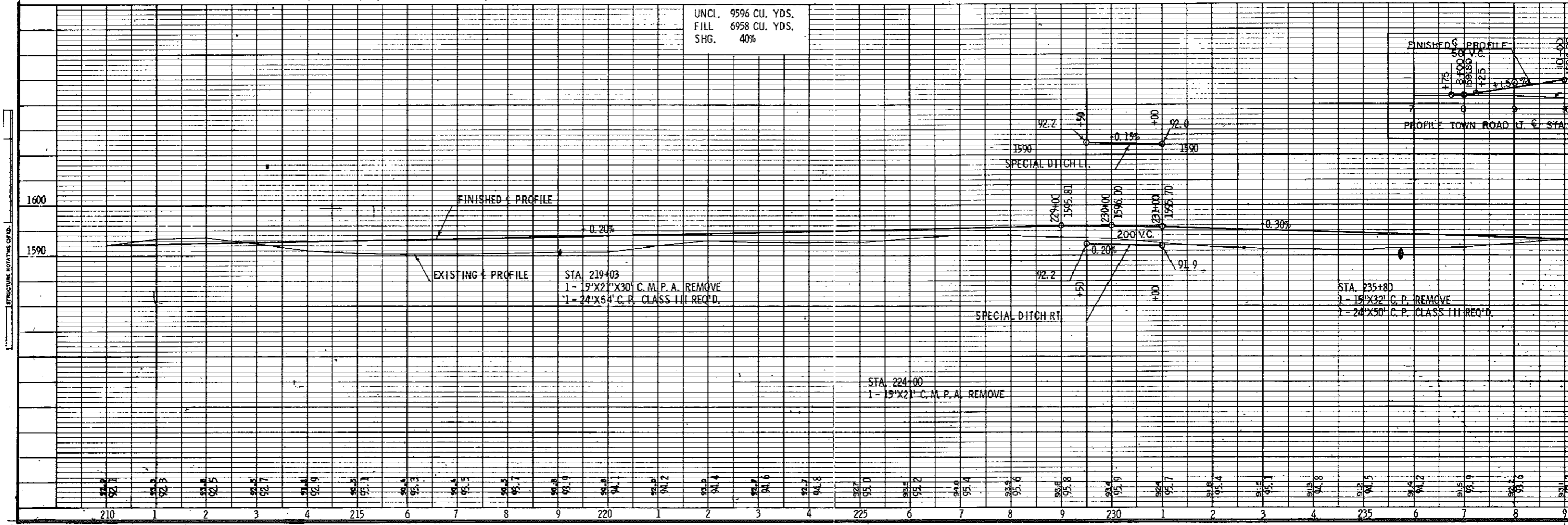
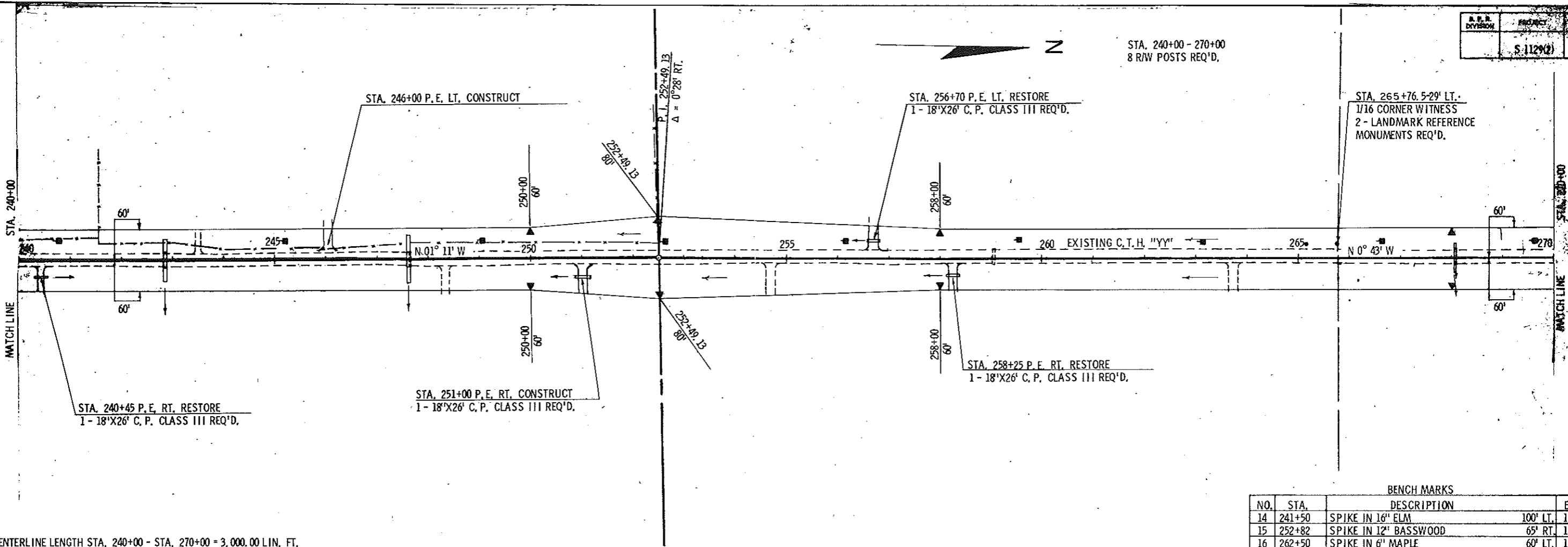
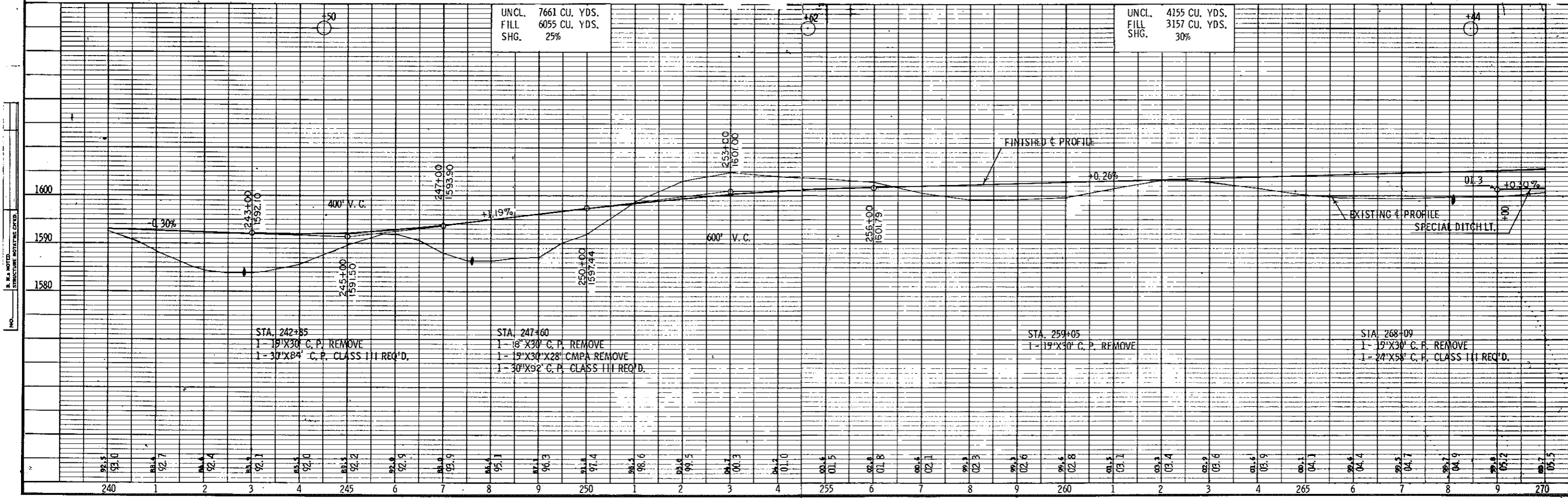


PLATE 1 - PLAN - PROFILE



NET CENTERLINE LENGTH STA. 240+00 - STA. 270+00 = 3,000.00 LIN. FT.

BENCH MARKS			
NO.	STA.	DESCRIPTION	ELEV.
14	241+50	SPIKE IN 16' ELM	100' LT. 1586.4
15	252+82	SPIKE IN 12' BASSWOOD	65' RT. 1602.8
16	262+50	SPIKE IN 6' MAPLE	60' LT. 1604.2



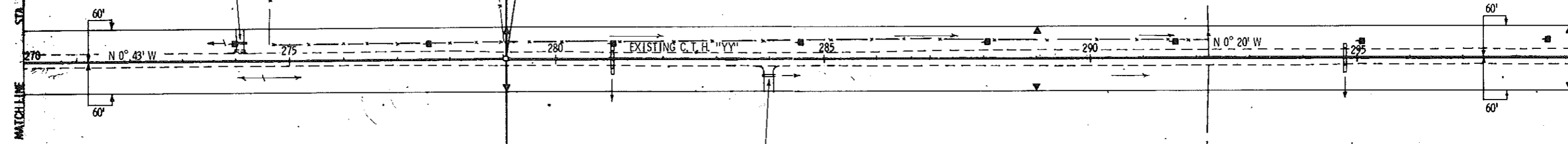
STA. 270+00 - 300+00
6 RW POSTS REQ'D.

STA. 274+07 P.E. LT. RESTORE
1 - 19'X20' C.P. REMOVE
1 - 18'X26' C.P. CLASS III REQ'D.

P.I. 279+05.13
Δ = 0°23' RT.

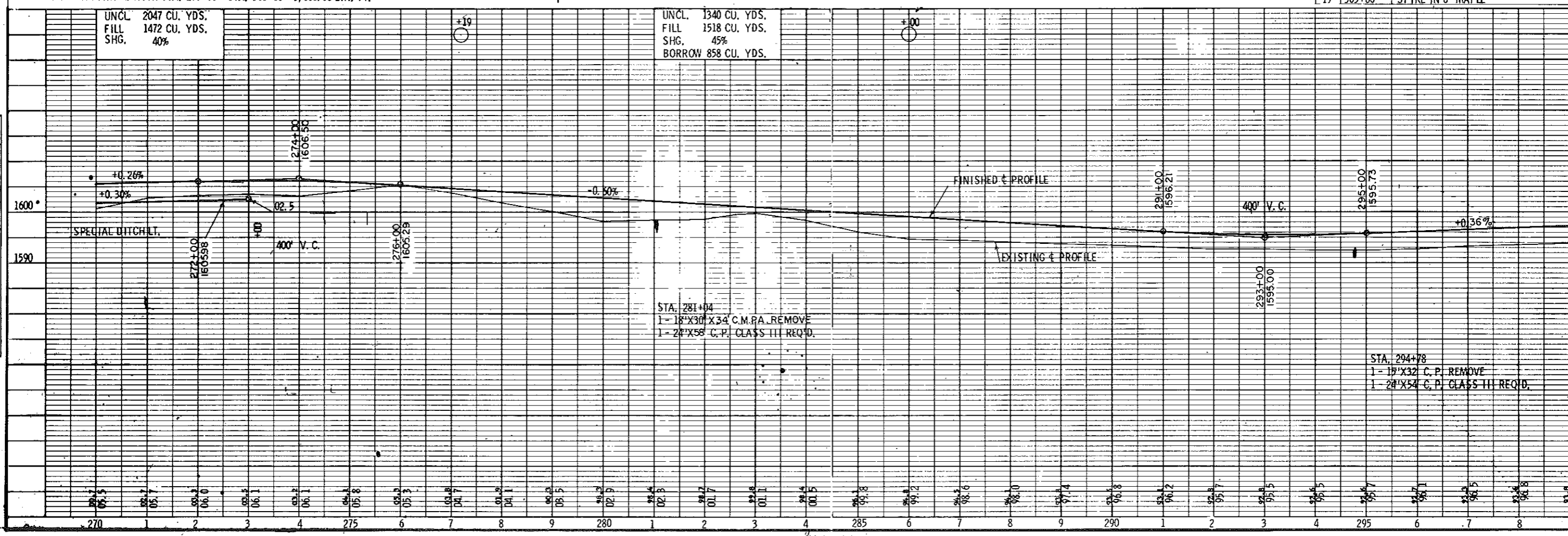
STA. 284+00 P.E. RT. RESTORE
1 - 18'X26' C.P. CLASS III REQ'D.

MATCHLINE



NET CENTERLINE LENGTH STA. 270+00 - STA. 300+00 = 3,000.00 LIN. FT.

BENCH MARKS		
NO.	STA.	DESCRIPTION
17	279+50	SPIKE IN 12' ELM
18	291+43	SPIKE IN 15' YELLOW BIRCH
19	305+60	SPIKE IN 6' MAPLE



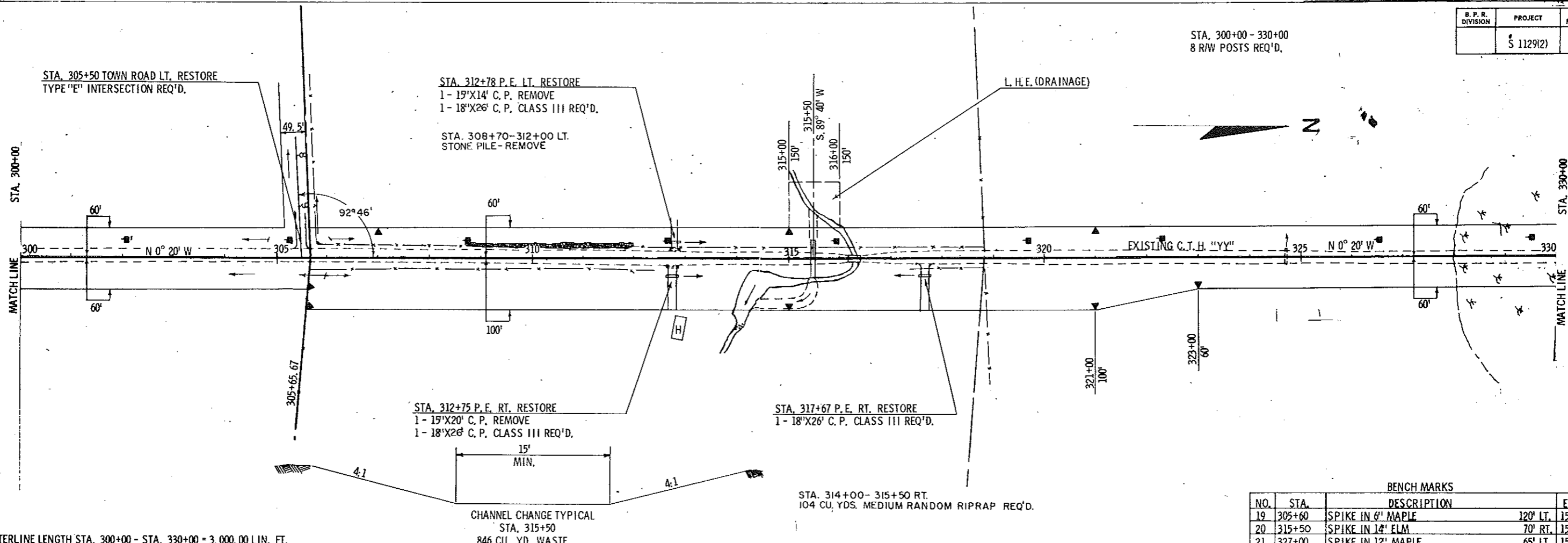
UNCL. 2047 CU. YDS.
FILL 1472 CU. YDS.
SHG. 40%

UNCL. 1340 CU. YDS.
FILL 1518 CU. YDS.
SHG. 45%
BORROW 858 CU. YDS.

STA. 281+04
1 - 18'X30'X34' C.M.P.A. REMOVE
1 - 24'X58' C.P. CLASS III REQ'D.

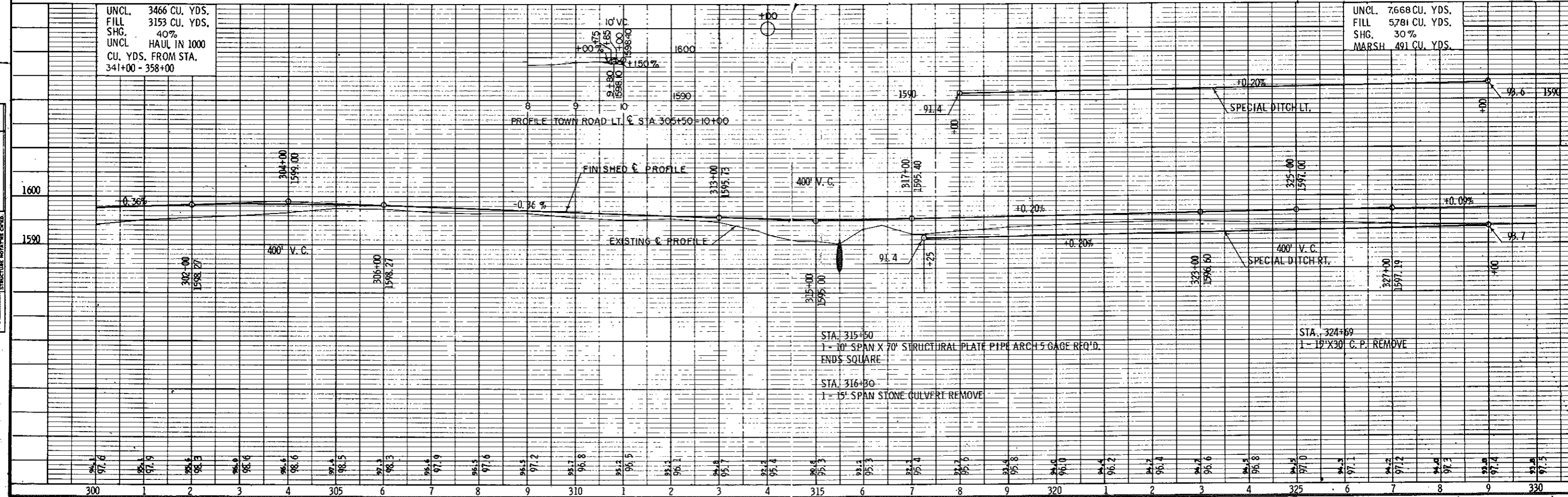
STA. 294+78
1 - 15'X32' C.P. REMOVE
1 - 24'X54' C.P. CLASS III REQ'D.

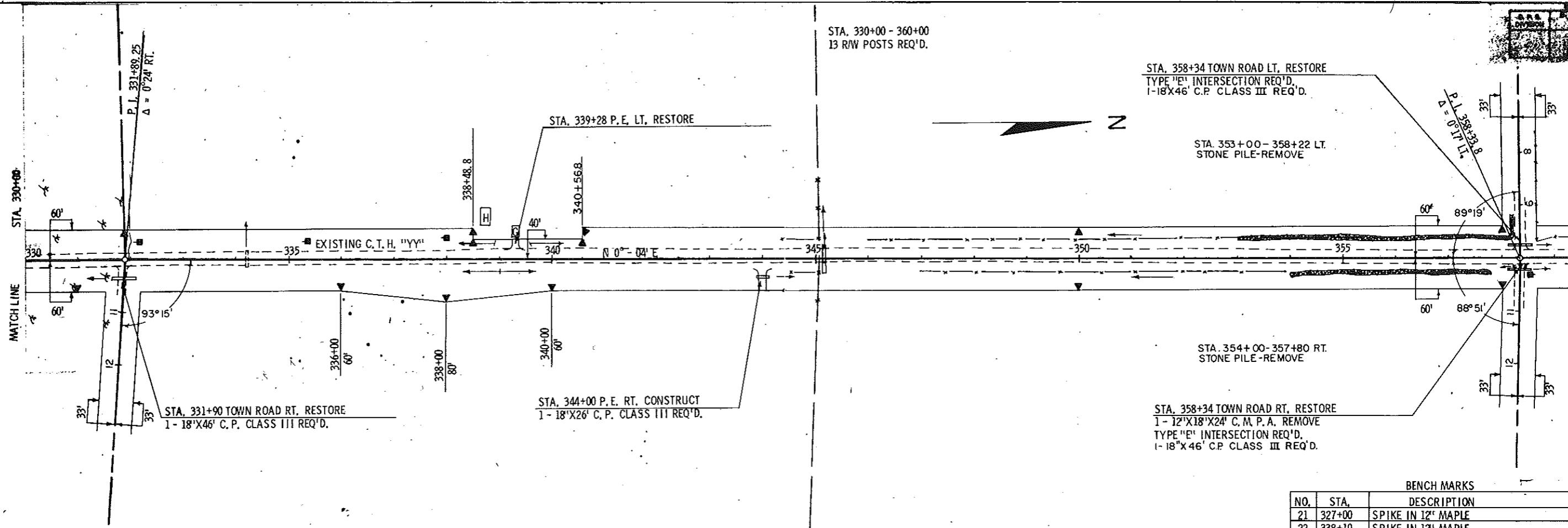
STA. 300+00 - 330+00
8 RW POSTS REQ'D.



NET CENTERLINE LENGTH STA. 300+00 - STA. 330+00 = 3,000.00 LIN. FT.

BENCH MARKS			
NO.	STA.	DESCRIPTION	ELEV.
19	305+60	SPIKE IN 6" MAPLE	120' LT. 1598.01
20	315+50	SPIKE IN 14' ELM	70' RT. 1588.90
21	327+00	SPIKE IN 12' MAPLE	65' LT. 1596.18





STA. 330+00 - 360+00
13 R/W POSTS REQ'D.

STA. 358+34 TOWN ROAD LT. RESTORE
TYPE 'E' INTERSECTION REQ'D.
1-18'x46' C.P. CLASS III REQ'D.

STA. 353+00 - 358+22 LT.
STONE PILE-REMOVE

STA. 354+00 - 357+80 RT.
STONE PILE-REMOVE

STA. 358+34 TOWN ROAD RT. RESTORE
1-12'x18'x24' C.M.P.A. REMOVE
TYPE 'B' INTERSECTION REQ'D.
1-18'x46' C.P. CLASS III REQ'D.

BENCH MARKS		
NO.	STA.	DESCRIPTION
21	327+00	SPIKE IN 12' MAPLE
22	338+10	SPIKE IN 12' MAPLE
23	352+68	SPIKE IN 6' POPLAR
24	361+56	SPIKE IN 14' MAPLE

NET CENTERLINE LENGTH STA. 330+00 - STA. 360+00 = 3,000.00 LIN. FT.

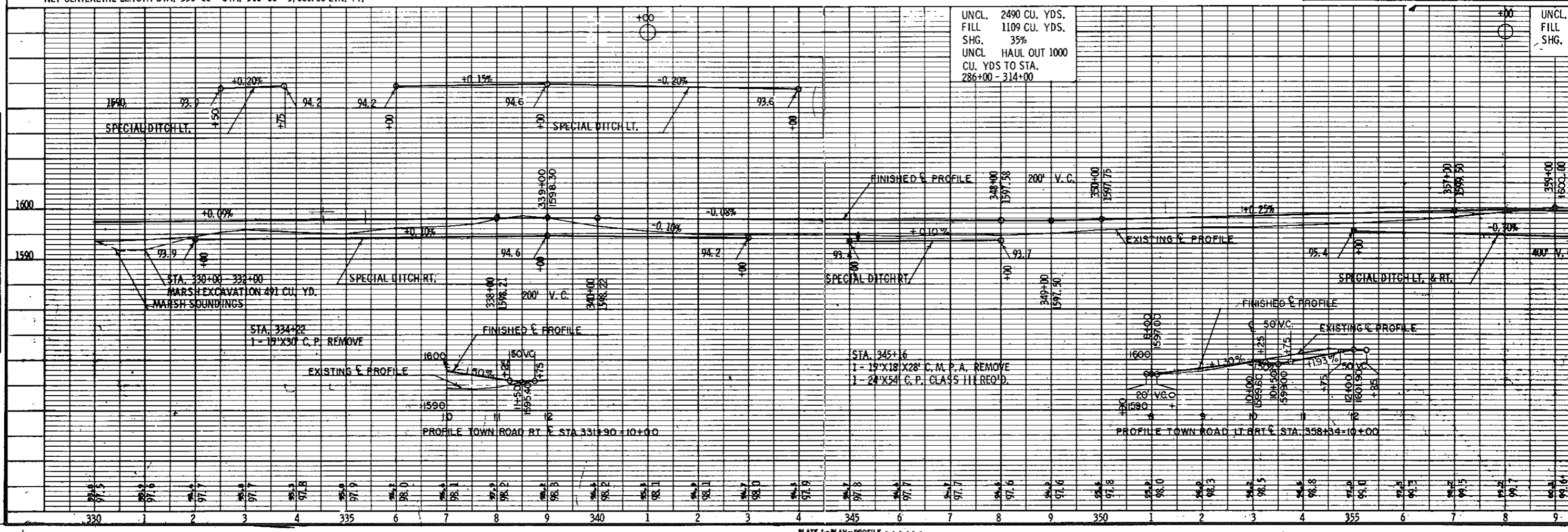


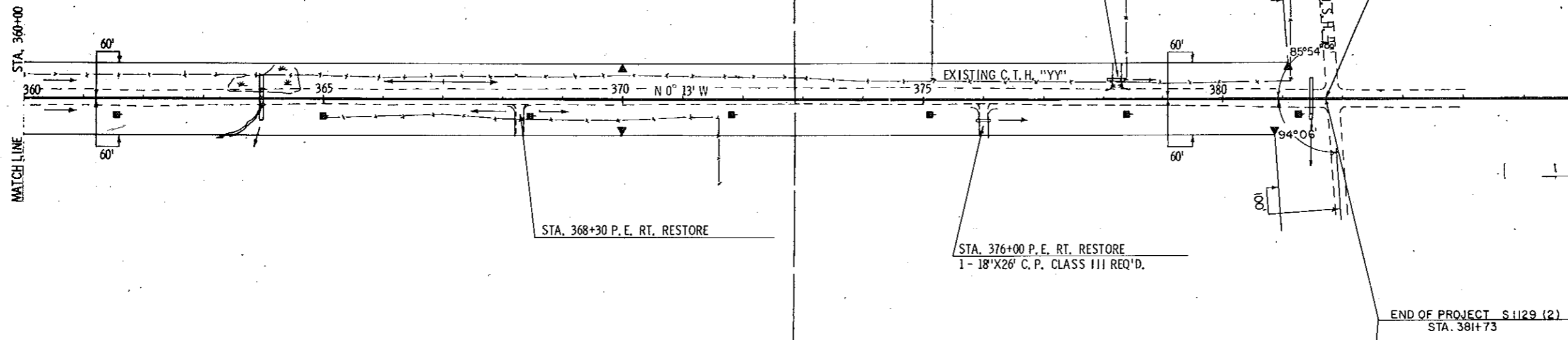
PLATE 1 - PLAN - PROFILE & B.M.S.

STA. 360+00 - 381+73
4 RW POSTS REQ'D.



STA. 378+22 P.E. LT. RESTORE
1 - 19'X16' C.P. REMOVE
1 - 18'X26' C.P. CLASS III REQ'D.

STA. 381+73 C.T.H. "YY"
TYPE "E" INTERSECTION REQ'D.



NET CENTERLINE LENGTH STA. 360+00 - STA. 381+73 = 2,173.00 LIN. FT.

BENCH MARKS			
NO.	STA.	DESCRIPTION	ELEV.
24	361+56	SPIKE IN 14' MAPLE	50' RT. 1594.32
25	371+30	SPIKE IN 5' MAPLE	80' RT. 1594.01
26	381+20	SPIKE IN 7' ELM.	75' RT. 1566.26

UNCL 6699 CU. YDS.
FILL 4988 CU. YDS.
SHG. 35%
BORROW 103 CU. YDS.

