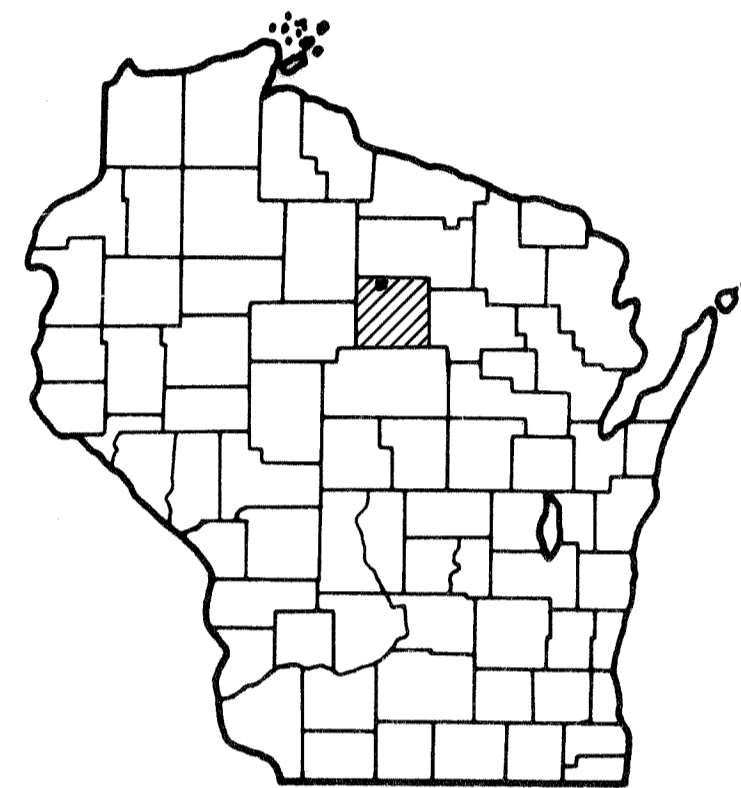


Index of Sheets

Sheet No. 1	Title
Sheet No. 2	Typical Cross Sections
Sheet No. 3	Estimate of Quantities
Sheet No. 2	Miscellaneous Quantities
Sheet No. 4	Right of Way Plat
Sheet No. 5	Plan and Profile (STA. 12+00 - STA. 25+00)
Sheet No. 6 - 6.8	Standard Details
Sheet No. ---	Structure Plans
Sheet No. ---	Computer Earthwork Data
Sheet No. 9 - 9.2	Cross Sections

TOTAL SHEETS = 17



Design Designation

A. D. T. (1978)	■ 1150
A. D. T. (1998)	■ 1900
D. H. V.	■ 247
D.	■ 50-50
T.	■ 12%
V.	■ 40 M.P.H.

Conventional Signs

County Line	-----	Culverts in Place	-----
Township or Range Line	-----	Culverts Required	-----
Section Line	-----	Drop Inlet	-----
New Right of Way Line	-----	Power Pole	-----
Present Right of Way Line	-----	Telephone or Telegraph Pole	-----
Wire Fence	-----	Right of Way Markers	-----
Corporate or City Limits	-----	Reference Stake for Hubs Only	-----
Property Line	-----	Marsh	-----
Traveled Way or P.E.	-----	Hedge	-----
Railroads	-----	Trees	-----
Base or Survey Line	-----	Ground Elevation	-----
Caution Symbol (combustible fluids under pressure)	-----	Grade Elevation	-----

STATE OF WISCONSIN  
DEPARTMENT OF TRANSPORTATION  
DIVISION OF HIGHWAYS

PLAN AND PROFILE OF PROPOSED  
U.S.H. 8 — NORTH COUNTY LINE ROAD  
C.T.H. "Y"  
LINCOLN COUNTY

STATE PROJECT NUMBER  
**9433-1-70**

Scales  
Plan 1 in = 50 ft  
Profile Hor. 1 in = 50 ft. Vert. 1 in = 5 ft.  
Cross Sections Hor. 1 in = 5' Vert. 1 in = 5'



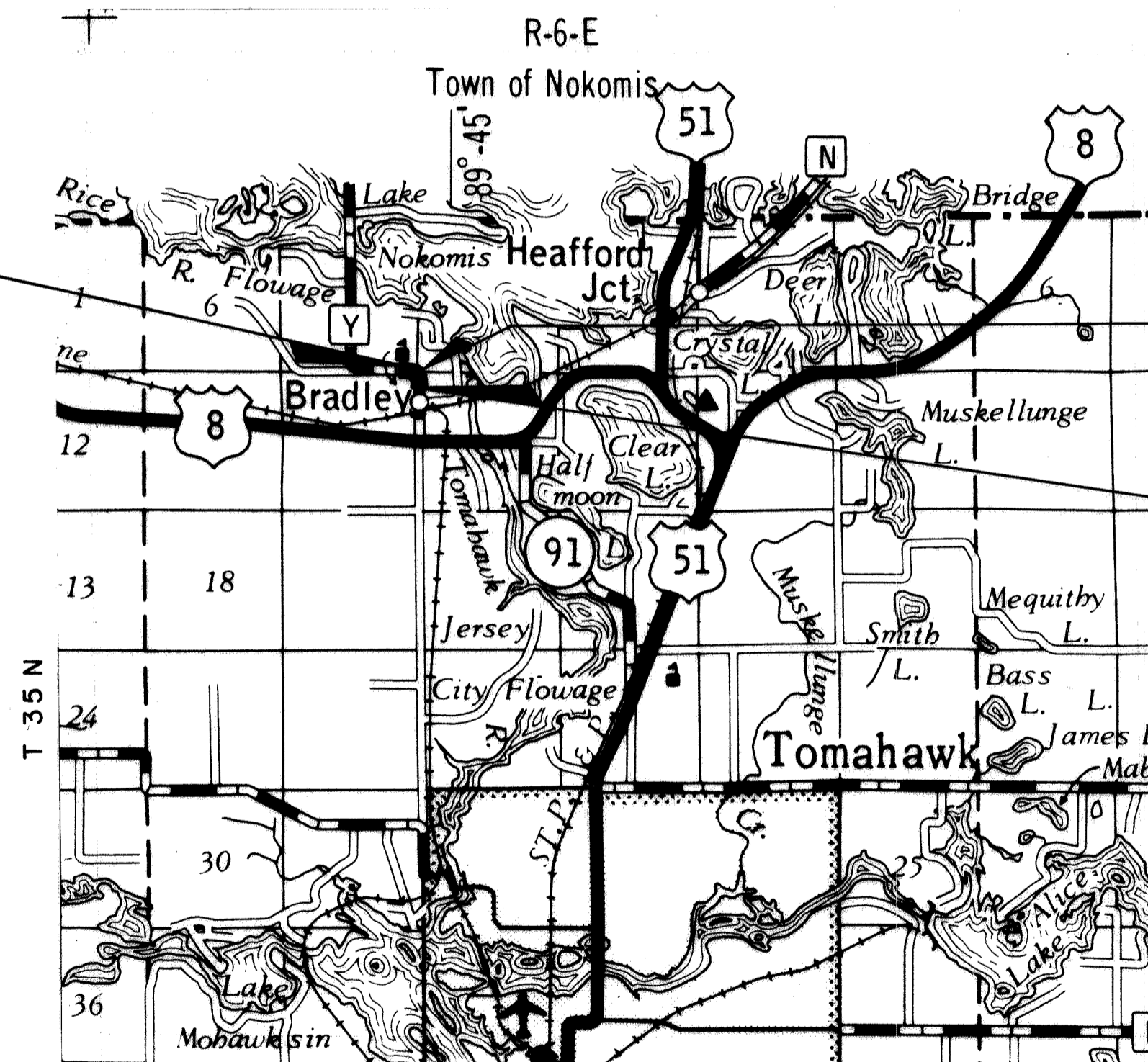
END OF PROJECT 9433-1-70  
STA. 25+00

N. 622,200 (±200')  
E. 2,062,170 (±200')  
6276 FT. W. OF THE N.E. CORNER  
SEC. 8, T 35 N, R 6 E.

EQUATION: 22+24.9 BK. =  
23+72.6 AH.

BEGINNING OF PROJECT 9433-1-70  
STA. 12+00

N. 621,460 (±200')  
E. 2,062,800 (±200')  
740.5 FT. S. OF THE N.E. CORNER  
SEC. 8, T 35 N, R 6 E.



Layout

Scale 1 MILE

Total Net Length of Centerline = 0.218 Mi.

STATE PROJECT	FEDERAL PROJECT	
	PROJECT	CONTRACT
9433-1-70	HES 1251(1)	1

APPROVED FOR  
LINCOLN COUNTY  
BY

3-17-78 *Duane A. Gau*  
DATE COUNTY HIGHWAY COMMISSIONER

PLANS PREPARED  
BY  
MEAD & HUNT, INC.  
CONSULTING ENGINEERS  
MADISON, WISCONSIN

*David N. Munn*  
3-13-78

STATE OF WISCONSIN  
DEPARTMENT OF TRANSPORTATION  
DIVISION OF HIGHWAYS

Surveyor MEAD & HUNT District Checker H.O.K.  
Designer MEAD & HUNT C.O. Checker J.A.T.  
District Supervisor R.S. C.O. Monitor

Correct:  
Approved:  
Date 3-5-79 *R.D. Schindler*  
District Engineer

Approved:  
Date 3/22/79 *D.J. Strand*  
Chief of Facilities Development

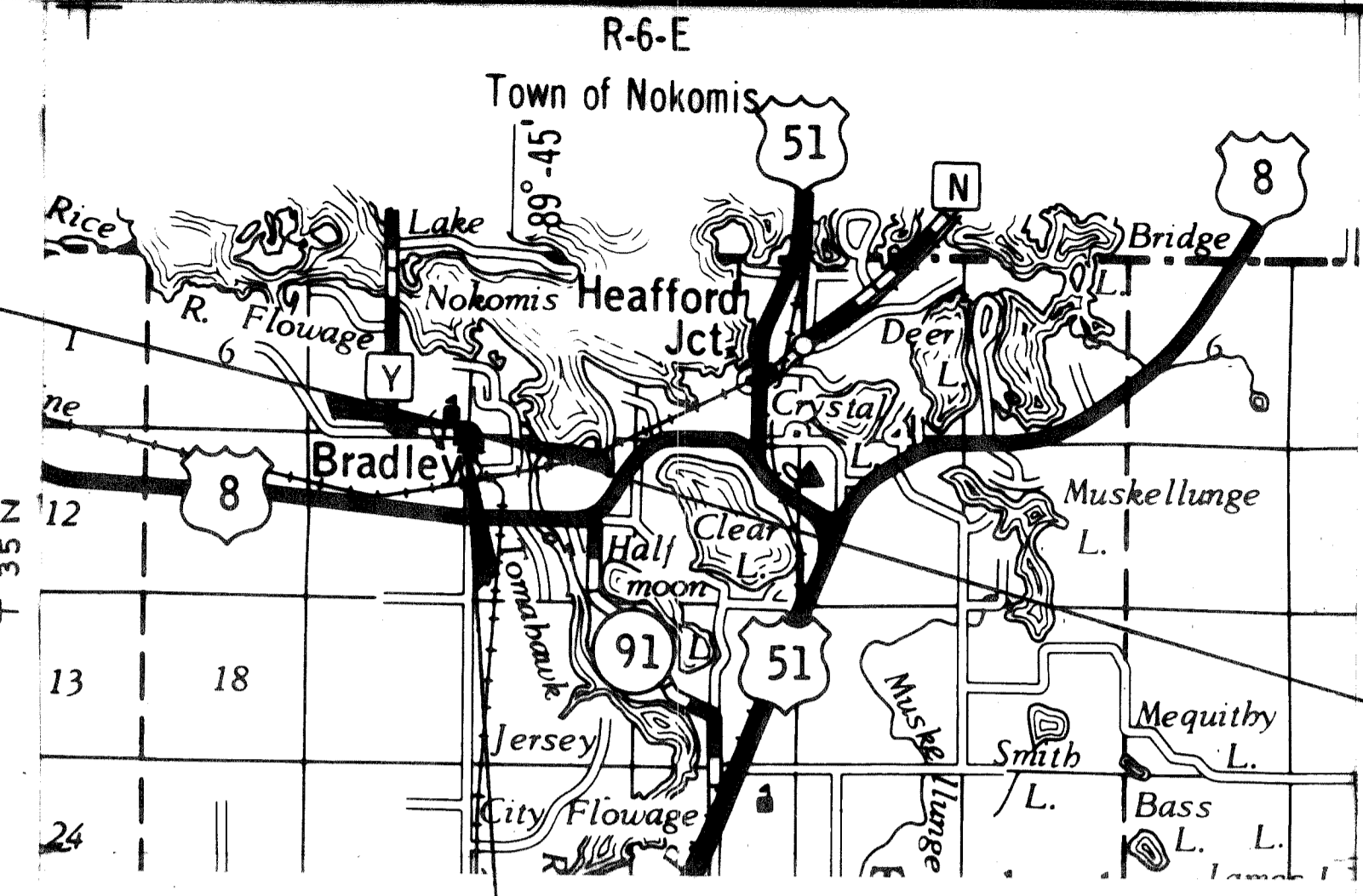
Approved:  
Date 3/23/79 *E.J. Byrkit*  
State Highway Engineer

U.S. DEPARTMENT OF TRANSPORTATION  
FEDERAL HIGHWAY ADMINISTRATION  
REGION 5 - WISCONSIN DIVISION

Approved:  
Date 3  
Division Engineer

COORDINATES ARE SCALED FROM U.S.G.S.  
TOPOGRAPHIC MAP, BRADLEY QUADRANGLE,  
CENTRAL WISCONSIN COORDINATE ZONE  
FOR IDENTIFICATION ONLY.

REVISION DATE	R/W PROJECT NUMBER	SHEET NUMBER
	9433-1-00	4-1
FEDERAL PROJECT NUMBER		
PLAT OF RIGHT OF WAY REQUIRED FOR U.S.H. 8-N. COUNTY LINE ROAD C.T.H. "Y" LINCOLN COUNTY		
SCALE 1 INCH = 50 FT.		DATE
CONSTRUCTION PROJECT NUMBER		4
9433-1-70		



END RELOCATION ORDER  
PROJECT 9433-1-00

BEGIN RELOCATION ORDER  
PROJECT 9433-1-00

EQUATION: 22+24.9 BK. =  
23+72.6 AH.

SCALE: 1 IN. = 1 MI.

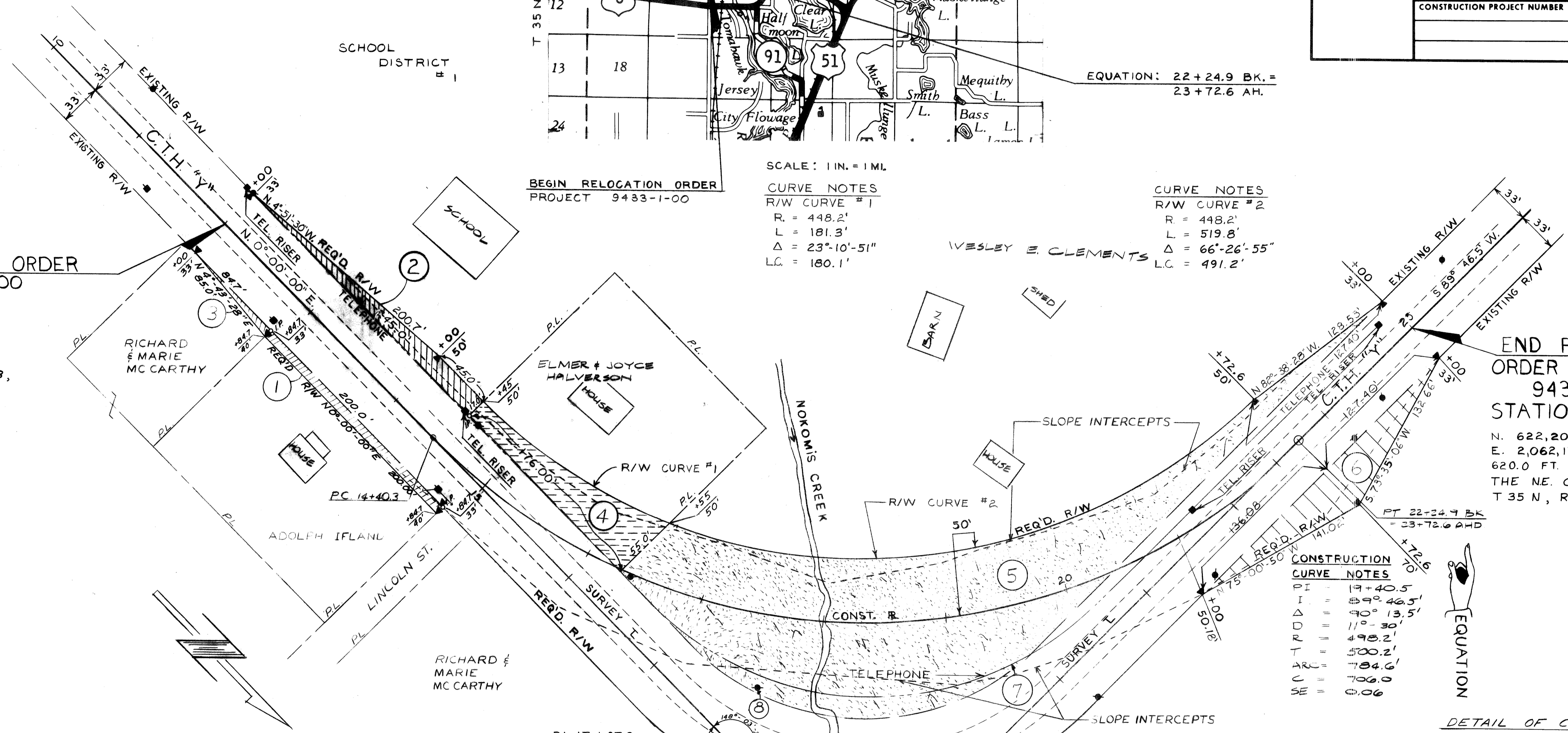
CURVE NOTES  
R/W CURVE #1  
R = 448.2'  
L = 181.3'  
Δ = 23°-10'-51"  
LC = 180.1'

CURVE NOTES  
R/W CURVE #2  
R = 448.2'  
L = 519.8'  
Δ = 66°-26'-55"  
LC = 491.2'

WESLEY E. CLEMENTS

BEGIN RELOCATION ORDER  
PROJECT 9433-1-00  
STATION 12+00  
N. 621,460 (± 200')  
E. 2,062,800 (± 200')  
7.6' E. & 740.9' S. OF  
THE N.E. CORNER SEC. 8,  
T 35 N, R 6 E

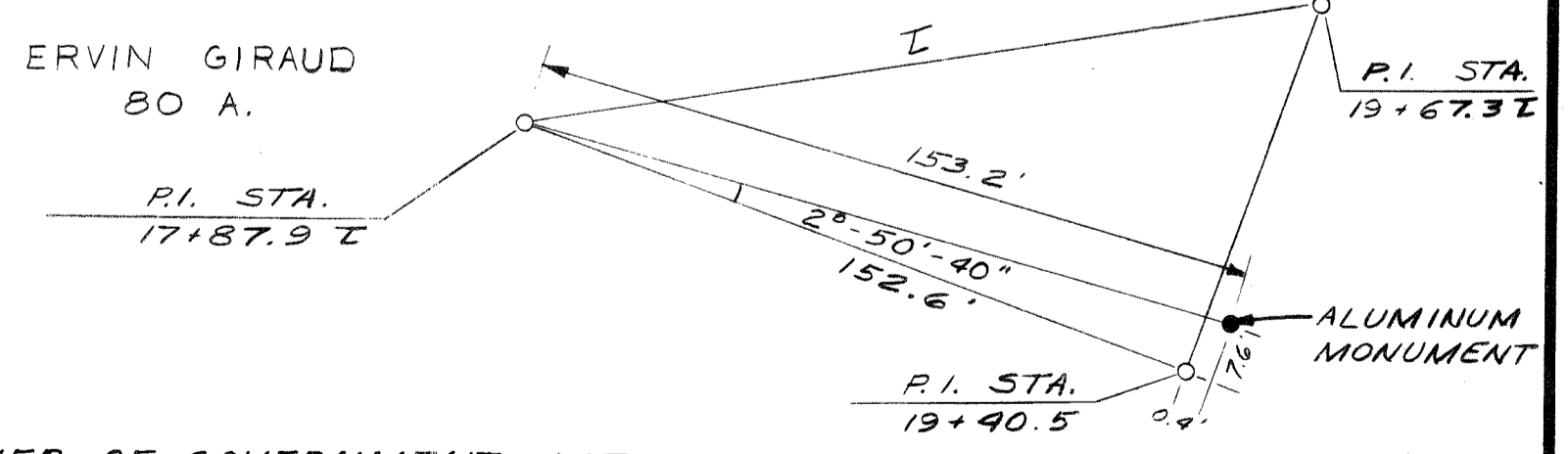
END RELOCATION ORDER  
PROJECT 9433-1-00  
STATION 25+00  
N. 622,200 (± 200')  
E. 2,062,170 (± 200')  
620.0 FT. W. & 2.9' S. OF  
THE N.E. CORNER SEC. 8,  
T 35 N, R 6 E



CONSTRUCTION CURVE NOTES

PI	17+40.5
I	49° 46.5'
Δ	40° 13.5'
P	17° 30'
R	448.2'
T	500.2'
ARC	184.6'
C	706.0
SE	0.06

DETAIL OF CORNER TIE



NOTE:  
THE N.W. CORNER OF GOVERNMENT LOT NO. 2 IS RECORDED AS BEING 422 FT. SOUTH OF THE N.E. CORNER OF SECTION 8 ON THE ORIGINAL PLAT DATED 1878. EXISTING MONUMENTS INDICATE THIS DISTANCE TO BE 426.2 FT. BEARINGS SHOWN ARE MAGNETIC BEARINGS TO THE NEAREST MINUTE. COORDINATES ARE SCALED FROM U.S.G.S. TOPOGRAPHIC MAP, BRADLEY QUADRANGLE, CENTRAL WISCONSIN COORDINATE ZONE, FOR IDENTIFICATION ONLY.

APPROVED FOR  
LINCOLN COUNTY  
BY  
3-17-78  
DATE  
Dwain A. [Signature]  
COUNTY COMMISSIONER

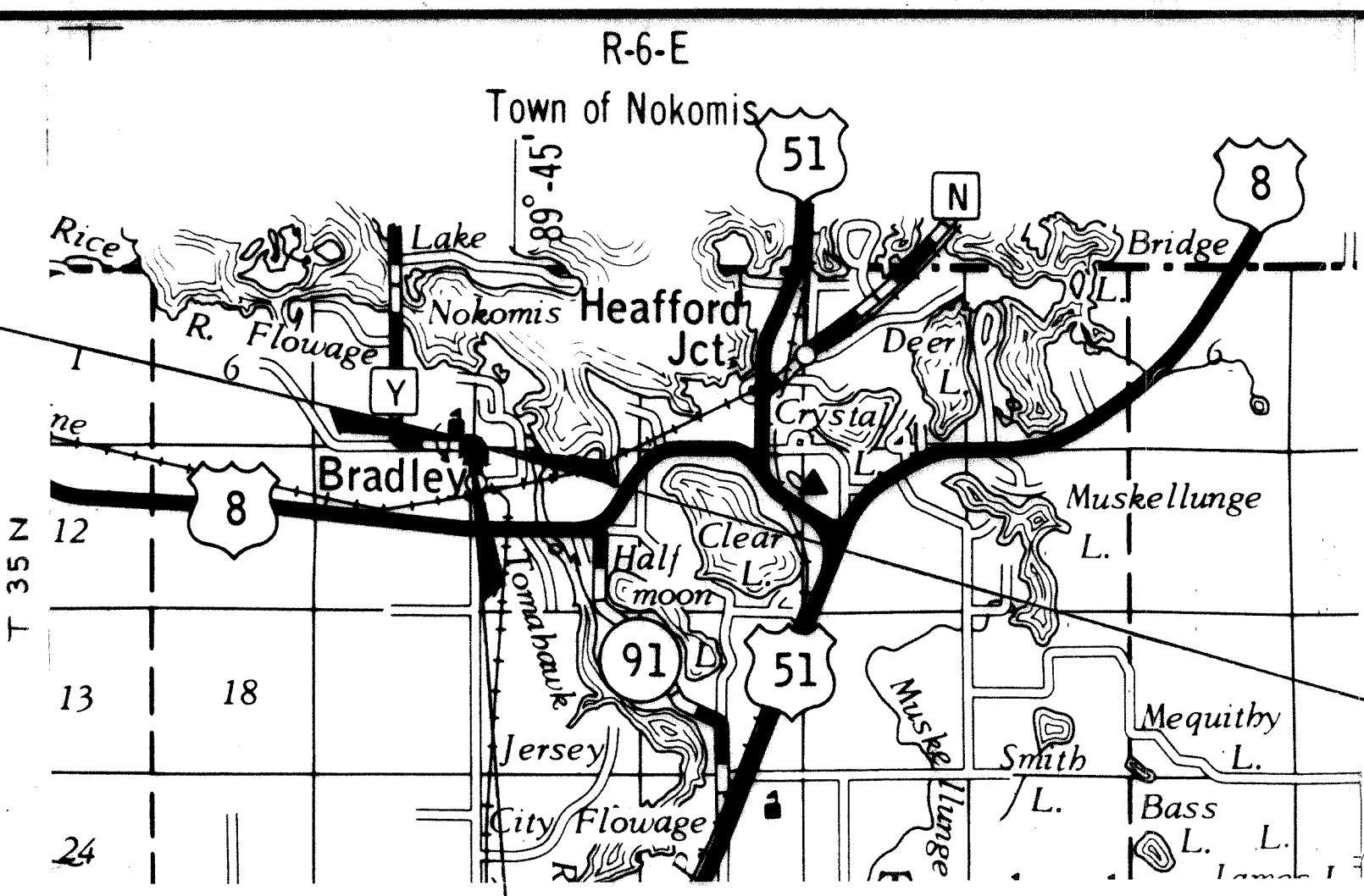
STANDARD ABBREVIATIONS AND SYMBOLS

- FT. FEET
- IN. INCH
- N. NORTH
- E. EAST
- S. SOUTH
- R/W RIGHT-OF-WAY
- P.L. PROPERTY LINE
- UNDERGROUND FACILITY
- - - POWER POLE
- Ø TELEPHONE POLE
- REQ'D. REQUIRED
- CONST. CONSTRUCTION
- R REFERENCE LINE
- T TRANSIT LINE

PARCEL NO.	OWNER	INTEREST REQ'D.	ACRES REQUIRED		TOTAL REMAINING ACRES	OPERATIONS PROJECT NUMBER
			NEW R/W REQ'D.	EXISTING R/W		
1	ADOLPH IFLAND	FEE	0.032			9433-1-00
2	SCHOOL DISTRICT #1	FEE	0.065			"
3	RICHARD & MARIE MCCARTHY	FEE	0.007			"
4	ELMER & JOYCE HALVERSON	FEE	0.125			"
5	WESLEY E. CLEMENTS	FEE	1.07			"
6	ERVIN GIRAUD	FEE	0.112			"
7	GENERAL TELEPHONE CO.	RELEASE OF RIGHTS	-			"
8	WIS. PUBLIC SERVICE CORP.	RELEASE OF RIGHTS	-			"



REVISION DATE	R/W PROJECT NUMBER	SHEET NUMBER
	9433-1-00	4-1
5-8-78 D.A.G. 1-10-78 D.A.G.	FEDERAL PROJECT NUMBER	
PLAT OF RIGHT OF WAY REQUIRED FOR U.S.H. 8 - N. COUNTY LINE ROAD C.T.H. "Y" LINCOLN COUNTY SCALE 1 INCH = 50 FT. DATE		
CONSTRUCTION PROJECT NUMBER 9433-1-70		



END RELOCATION ORDER  
PROJECT 9433-1-00

BEGIN RELOCATION ORDER  
PROJECT 9433-1-00

EQUATION: 22+24.9 BK. =  
23+72.6 AH.

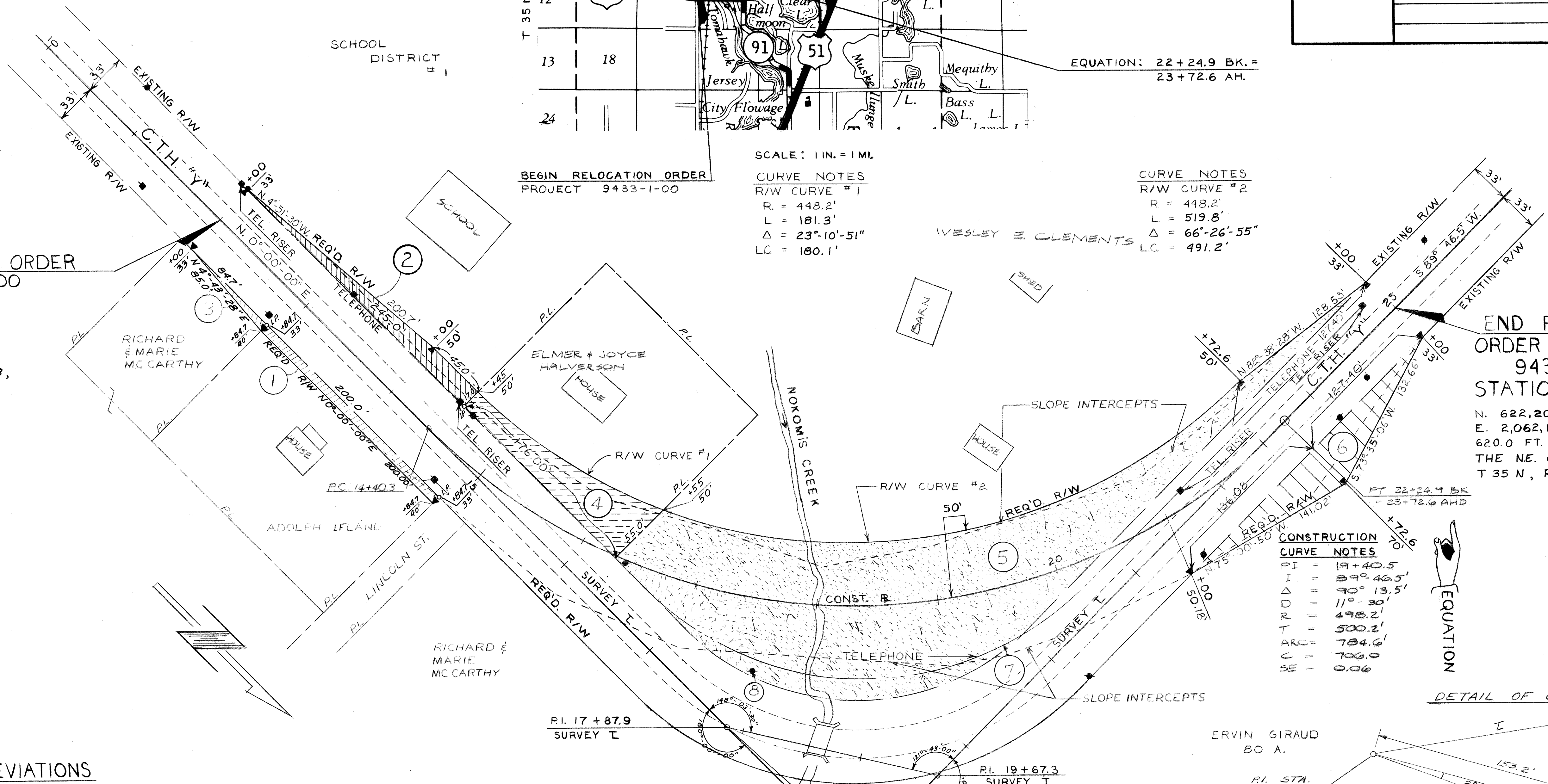
SCALE: 1 IN. = 1 MI.

CURVE NOTES  
R/W CURVE #1  
R = 448.2'  
L = 181.3'  
Δ = 23°-10'-51"  
LC = 180.1'

CURVE NOTES  
R/W CURVE #2  
R = 448.2'  
L = 519.8'  
Δ = 66°-26'-55"  
LC = 491.2'

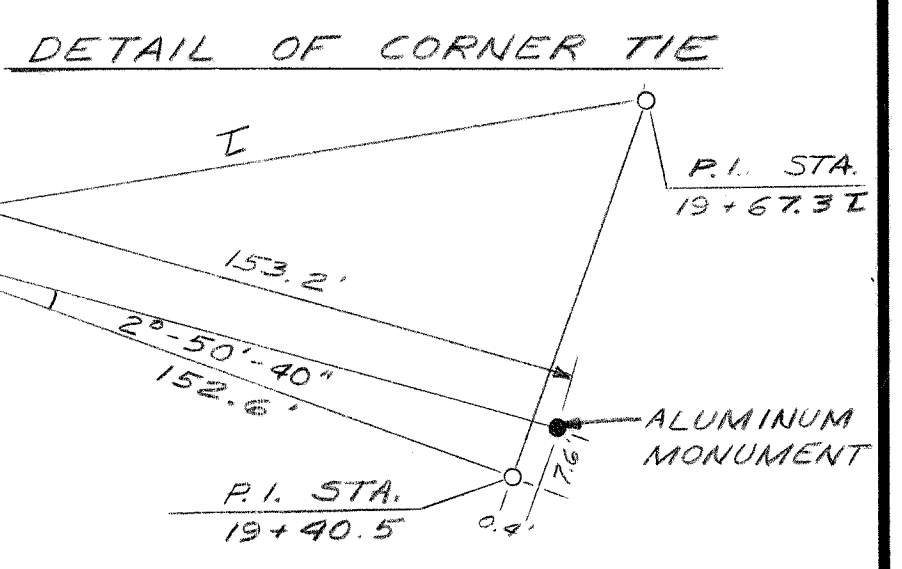
BEGIN RELOCATION ORDER  
PROJECT 9433-1-00  
STATION 12+00  
N. 621,460 (± 200')  
E. 2,062,800 (± 200')  
7.6' E. & 740.9' S. OF  
THE N.E. CORNER SEC. 8,  
T 35 N, R 6 E

END RELOCATION ORDER  
PROJECT 9433-1-00  
STATION 25+00  
N. 622,200 (± 200')  
E. 2,062,170 (± 200')  
620.0 FT. W. & 2.9' S. OF  
THE N.E. CORNER SEC. 8,  
T 35 N, R 6 E



CONSTRUCTION CURVE NOTES

PI	= 19+40.5
I	= 89° 46.5'
Δ	= 90° 13.5'
D	= 11° 30'
R	= 498.2'
T	= 500.2'
ARC	= 784.6'
C	= 706.0
SE	= 0.06



STANDARD ABBREVIATIONS AND SYMBOLS

FT.	FEET
IN.	INCH
N.	NORTH
E.	EAST
S.	SOUTH
R/W	RIGHT-OF-WAY
P.L.	PROPERTY LINE
—	UNDERGROUND FACILITY
—	POWER POLE
⊙	TELEPHONE POLE
REQ'D.	REQUIRED
CONST.	CONSTRUCTION
R	REFERENCE LINE
T	TRANSIT LINE

PARCEL NO.	OWNER	INTEREST REQ'D.	ACRES REQUIRED	ACRES EXISTING R/W	TOTAL R/W REQ'D.	TOTAL REMAINING ACRES	OPERATIONS PROJECT NUMBER
1	ADOLPH IFLAND	FEE	0.032				9433-1-00
2	SCHOOL DISTRICT #1	FEE	0.065				"
3	RICHARD & MARIE MCCARTHY	FEE	0.007				"
4	ELMER & JOYCE HALVERSON	FEE	0.125				"
5	WESTLEY E. CLEMENTS	FEE	1.07				"
6	ERVIN GIRAUD	FEE	0.112				"
7	GENERAL TELEPHONE CO.	RELEASE OF RIGHTS	-				"
8	WIS. PUBLIC SERVICE CORP.	RELEASE OF RIGHTS	-				"

NOTE:  
THE N.W. CORNER OF GOVERNMENT LOT NO. 2 IS RECORDED AS BEING 422 FT. SOUTH OF THE N.E. CORNER OF SECTION 8 ON THE ORIGINAL PLAT DATED 1878. EXISTING MONUMENTS INDICATE THIS DISTANCE TO BE 426.2 FT. BEARINGS SHOWN ARE MAGNETIC BEARINGS TO THE NEAREST MINUTE. COORDINATES ARE SCALED FROM U.S.G.S. TOPOGRAPHIC MAP, BRADLEY QUADRANGLE, CENTRAL WISCONSIN COORDINATE ZONE, FOR IDENTIFICATION ONLY.

APPROVED FOR  
LINCOLN COUNTY  
BY  
Duane A. Dan  
COUNTY COMMISSIONER  
3-12-78  
DATE