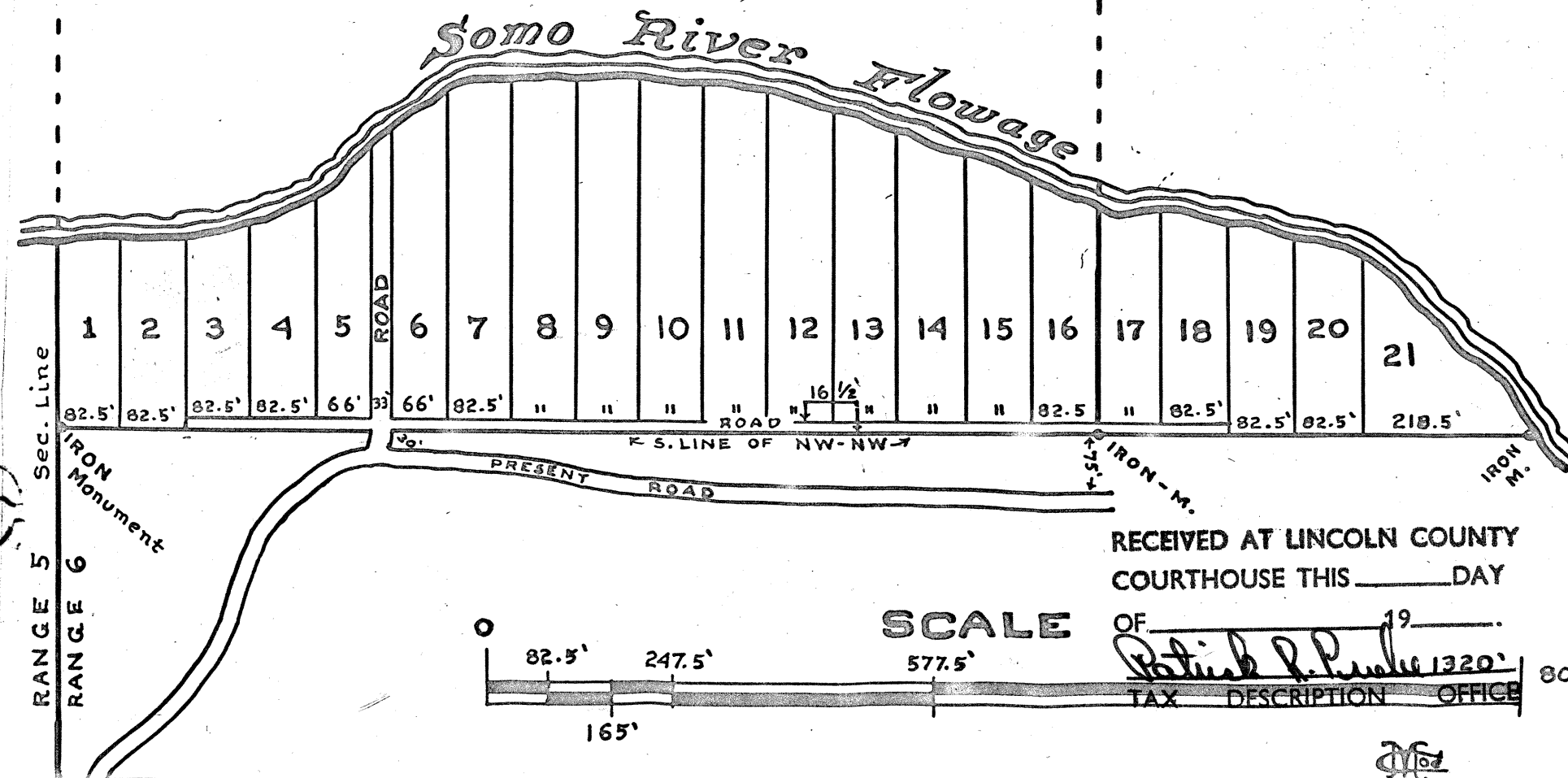


Unrecorded Plat of
RED CLOUD LANDING
 Subdivision

In ~ NW-NW Sec., 31 ~ T. 35, R. 6

NE-NW



RECEIVED AT LINCOLN COUNTY
 COURTHOUSE THIS _____ DAY

SCALE

OF _____ 19_____
 Robert P. P... 1320'
 TAX DESCRIPTION OFFICE

80 RDS.

AT LINCOLN COUNTY
 USE THIS _____ DAY

TAX DESCRIPTION OFFICE

Prt. of Lot 12 & 13
 Deer PARK SUBDIVISION
 Gov't Lot 3 34-35-6
 Robert Winat Aug, 1973

A

CS