

PLAT OF SURVEY
 OF THE EAST LINE OF THE NORTHEAST 1/4 OF SECTION 7, TOWNSHIP 32 NORTH, RANGE 8 EAST,
 TOWN OF SCHLEY, LINCOLN COUNTY, WISCONSIN.

NE 1/4, NE 1/4

HEINEMAN

ROAD

NE CORNER
 SECTION 8-32-8E
 6" X 6" STONE MONUMENT
 WITH CHISEL "X" (FOUND)

1/16TH LINE

1/16TH LINE

NE CORNER
 SE 1/4, NE 1/4
 SET 1" X 24" IRON PIPE
 WEIGHING 1.68 LBS/LINEAL FT.

RECEIVED BY LINCOLN COUNTY
 SURVEYOR THIS 14TH DAY
 OF November 20 18
James D. [Signature]
 COUNTY SURVEYOR

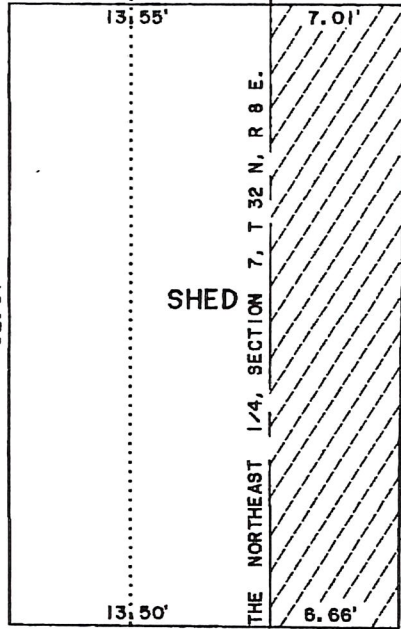
BEARINGS REFERENCED TO THE EAST LINE OF THE NORTHEAST 1/4 OF
 SECTION 7, T 32 N, R 8 E. ASSUMED TO BEAR S 00°00'00" E.

SE 1/4, NE 1/4

2642.02'

20.56'

POINT ON LINE
 SET 1" X 24" IRON PIPE
 WEIGHING 1.68 LBS/LINEAL FT.



LANDS OWNED BY BRIAN AND JULIE TURNER

LANDS OWNED BY GEORGE K. HANSON.

JULY 3, 2001



Laverne H. Mosher

1/4 LINE

EAST 1/4 CORNER
 6" X 6" STONE MONUMENT
 WITH CHISEL "X" (FOUND)

LHM SURVEYING

4203 SCHOFIELD AVENUE
 SCHOFIELD, WI 54476
 PHONE (715) 359-2253

M-2437

I, LAVERNE H. MOSHER, REGISTERED LAND SURVEYOR, HEREBY CERTIFY:
 THAT THE INFORMATION SHOWN HEREON IS TRUE AND ACCURATE TO THE
 BEST OF MY KNOWLEDGE AND BELIEF.
 THIS INSTRUMENT DRAFTED BY LAVERNE H. MOSHER.

SHEET 1 OF 1 SHEETS

5672B