

November 7, 1952

Field Notes on surveying the NW 1/4 of NE 1/4 Sec. 5 T. 35N R. 6E on Lincoln and Oneida County Line,

Est. 1/4 Cor. Bet. Sec. 5 & Sec. 8 T. 35N R. 6E.
Corrected West from Sec. corners 4, 5, 8, & 9 T. 35N R. 6E.
2643.3' in center road,
2" iron stake
B.T. Cedar 6" S33°30'E. 27.3'
B.T. Cedar 6" S. 11° 30' W. 26.4'

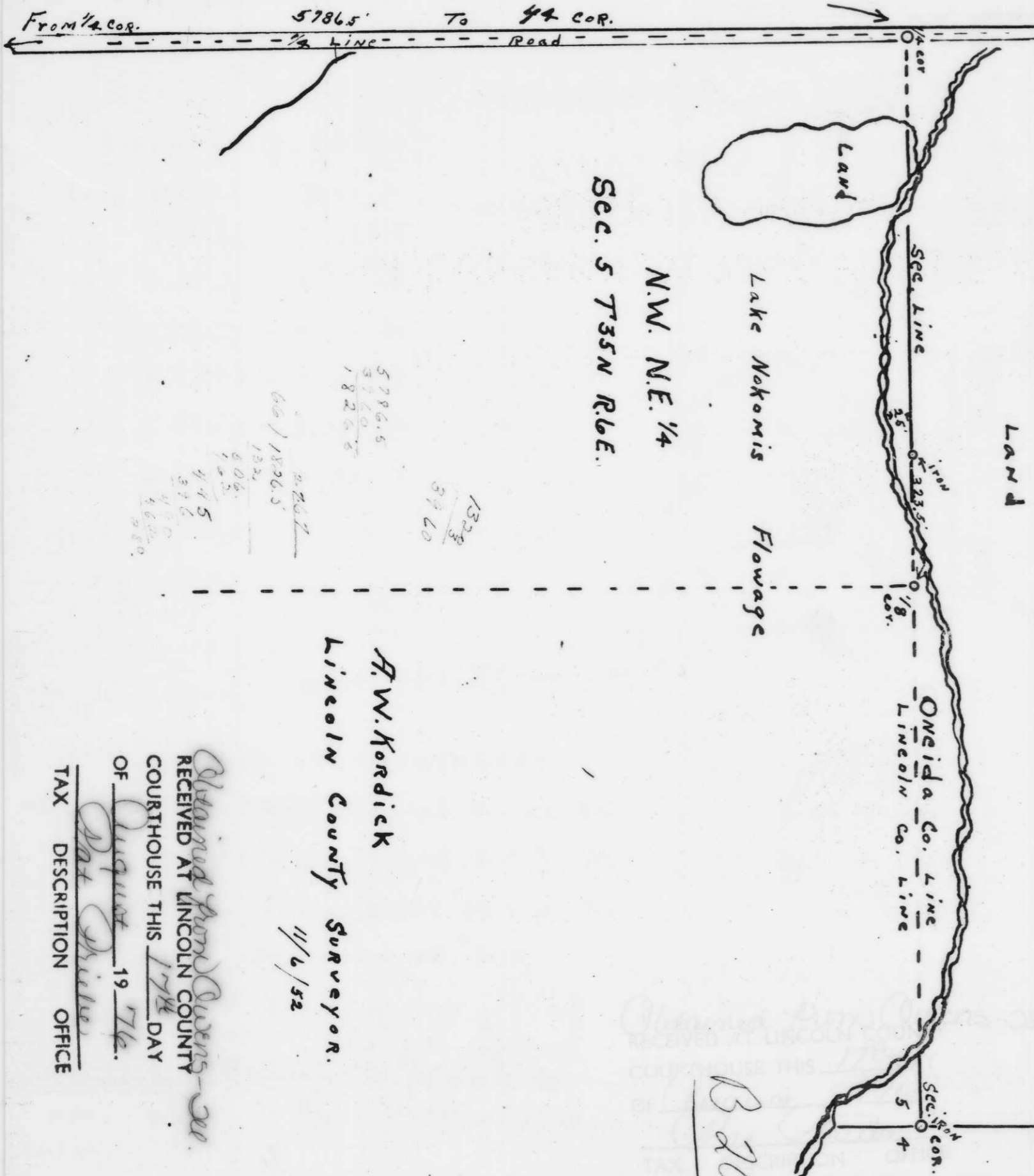
Chained 5786.5 North on 1/2 line and road to Estb. 1/4 cor on County line,
Then started from Section Corners on County Line Sec. 4, 5 run line West to 1/4 cor. Dist. 2653' which is 13' longer

I found there is about 25' of Lake frontage in front of the Cabins belonging to the NW 1/4 of the NE 1/4 Sec. 5 T. 35N. R. 6E. Lincoln County Wisconsin

A.W. Kordick

A.W. Kordick Lincoln County Surveyor

AS 501



A.W. Kordick

Lincoln County Surveyor.

11/6/52

Obtained from Owens - 20
RECEIVED AT LINCOLN COUNTY
COURTHOUSE THIS 17th DAY
OF August 19 76.
Pat Shriver
TAX DESCRIPTION OFFICE

Obtained from Owens - 20
RECEIVED AT LINCOLN COUNTY
COURTHOUSE THIS 17th DAY
OF August 19 76.
Pat Shriver
TAX DESCRIPTION OFFICE