

Plan of the  
Merrill Wks P.D.  
Showing Monuments

Scale 1/4" = 1'-0"

Plat of the  
City Engineer of Merrill Wis.

This is to certify that the lines of the Government Bldg. at Merrill Wis  
and the elevations of the bottom of trenches, floor, entrance etc.,  
and the lines and leads of the approach work are in accordance  
with the contract requirements and local municipal grades  
and ordinances, and that the boundary corners are marked  
as shown on the above plat.

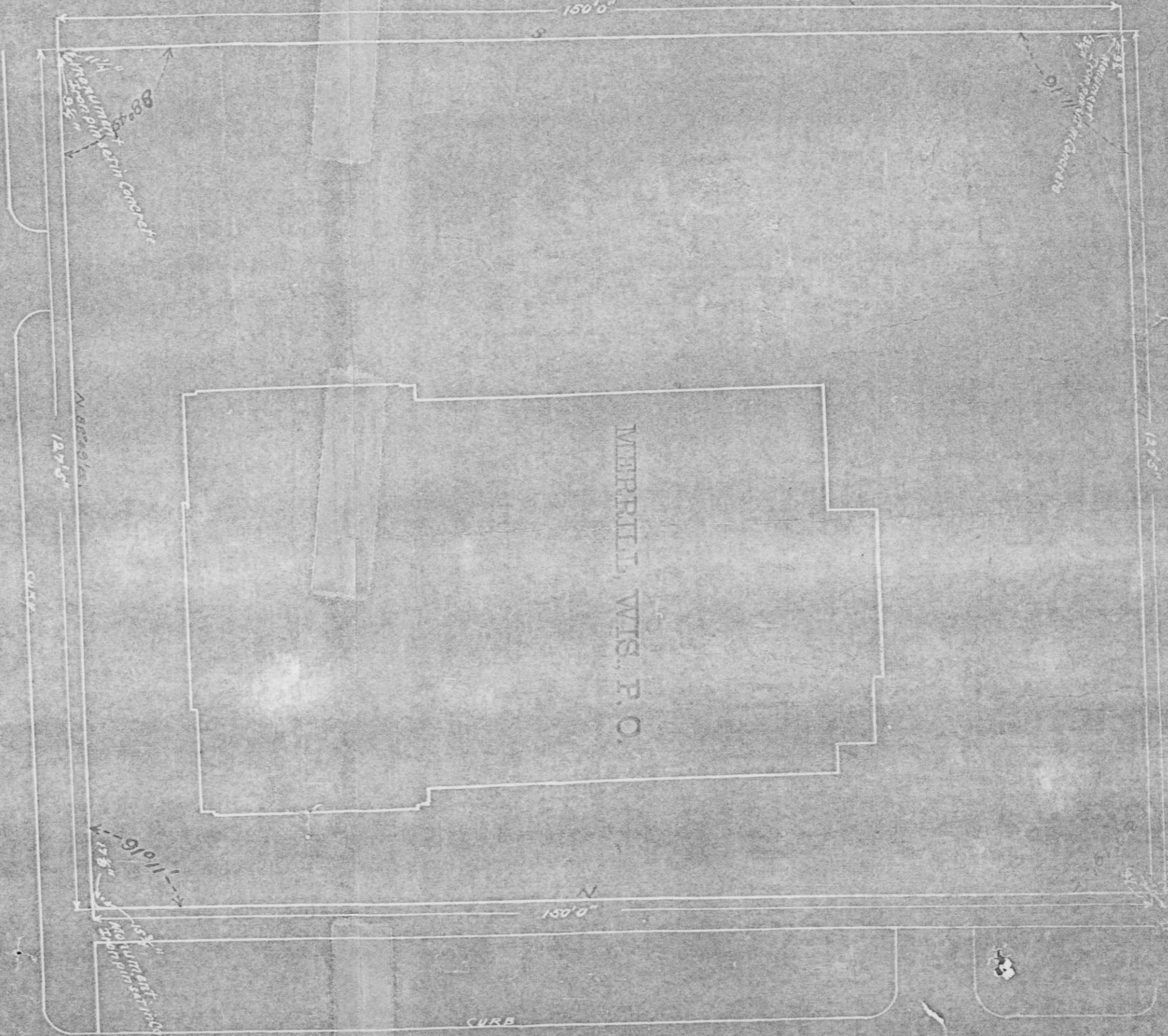
Given under my hand this 26th day of Feb. 1917.

Merrill Wis. Feb. 26/1917

11-31-6  
SEA SEA

RECEIVED FROM  
CITY ENGR. 9, 29, 17

SECOND STREET



B

0-62