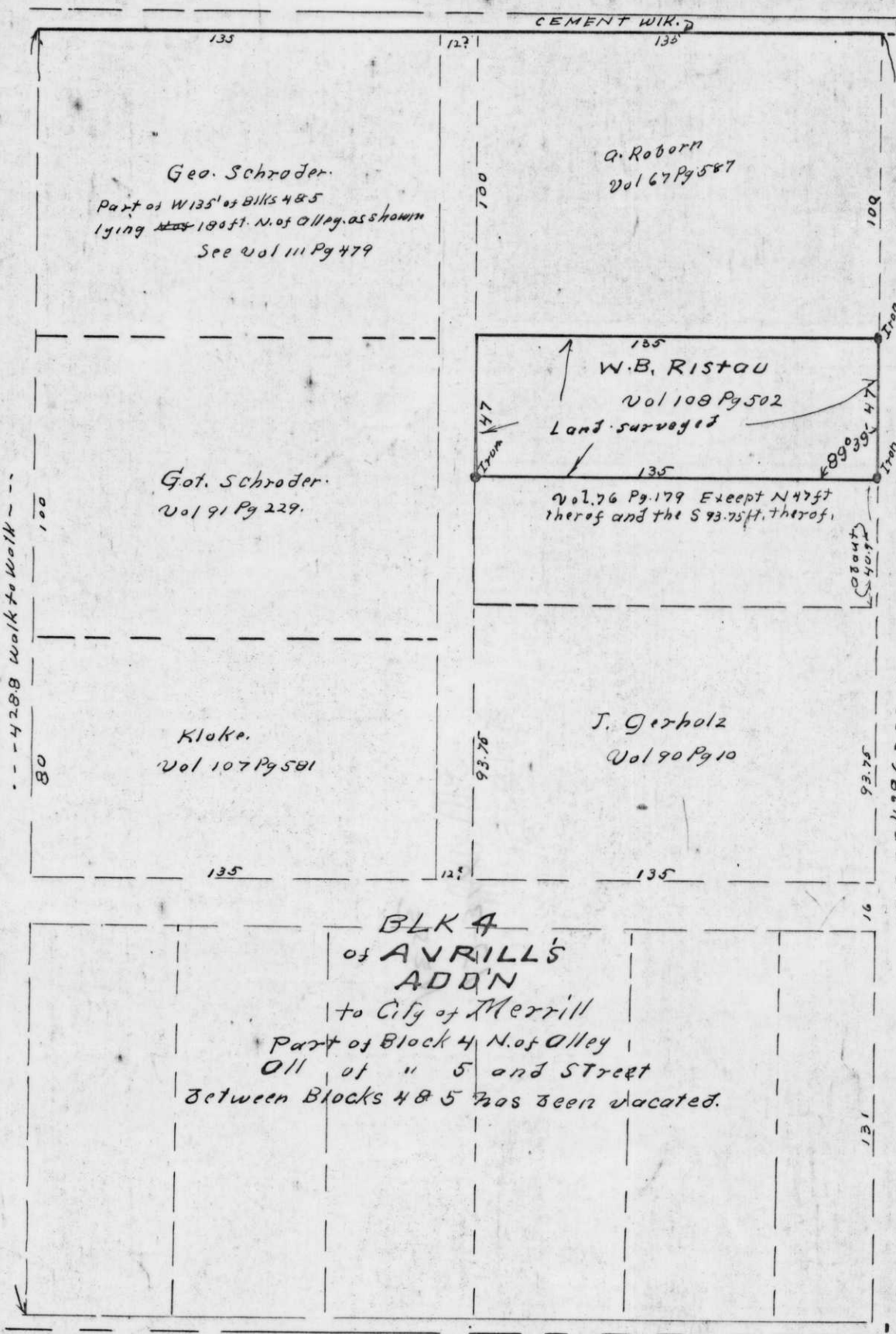


SIXTH ST.

LAKE ST.

NAST ST.

THIRD ST.



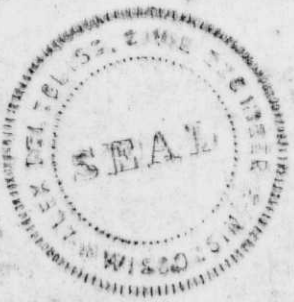
Survey for
W.B. RISTAU

Per Description in deed Recorded in Vol 108 Pg. 502
 Commencing on the W. line of Nast St. 100 ft. South
 of the NE. Cor. of BIK 5 of Avrill's Add'n, thence
 West 135 ft. thence S. 47 ft. thence E. parallel
 to the Alley thru BIK 4 of Avrill's Add'n, 135 ft.
 thence N. or E. line of BIK 4 47 ft. to the place
 of Commencement.

I certify that I have surveyed the above
 Description and the plot of land marked W.B.
 Ristau is a correct plot of such survey.

Alfred Deleghis
 Civil Eng.
 Oct. 1932.

Received from
 City Eng'g Office
 6-28-76



12-31-6

NE 1/4 SE 1/4

B-55

B-55

B-55