

Part of  
**GOV'T LOT 5**  
and the  
**NE 1/4 of the SW 1/4**  
**SECTION 31, T35N, R7E**  
Lincoln County, Wis.

ALICE

LAKE

Meander Corner

Scale 1"=100'

April, 1971

Northwoods Surveyors Inc.

*John H. Fisher*  
Land Surveyor

Bearings Solar

● = Iron pipe found in place.

16.7 Acres

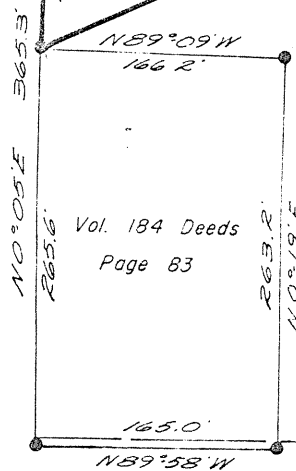
Vol. 250 Deeds

Page 29

ROAD

BIRCH

NE 1/4 of the SW 1/4



RECEIVED AT LINCOLN COUNTY  
COURTHOUSE THIS 24 DAY  
OF April 19 75.  
*Pat Priebe*  
TAX DESCRIPTION OFFICE

COUNTY

TRUNK

HIGHWAY

"D"

B