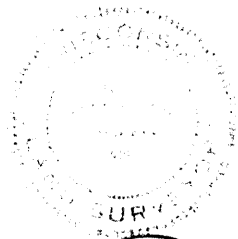


GOV'T LOT 3, SEC. 29  
 TWP. 35 N. R. 7 E.  
 LINCOLN CO. WIS.



SCALE  
 1 INCH = 100.0'

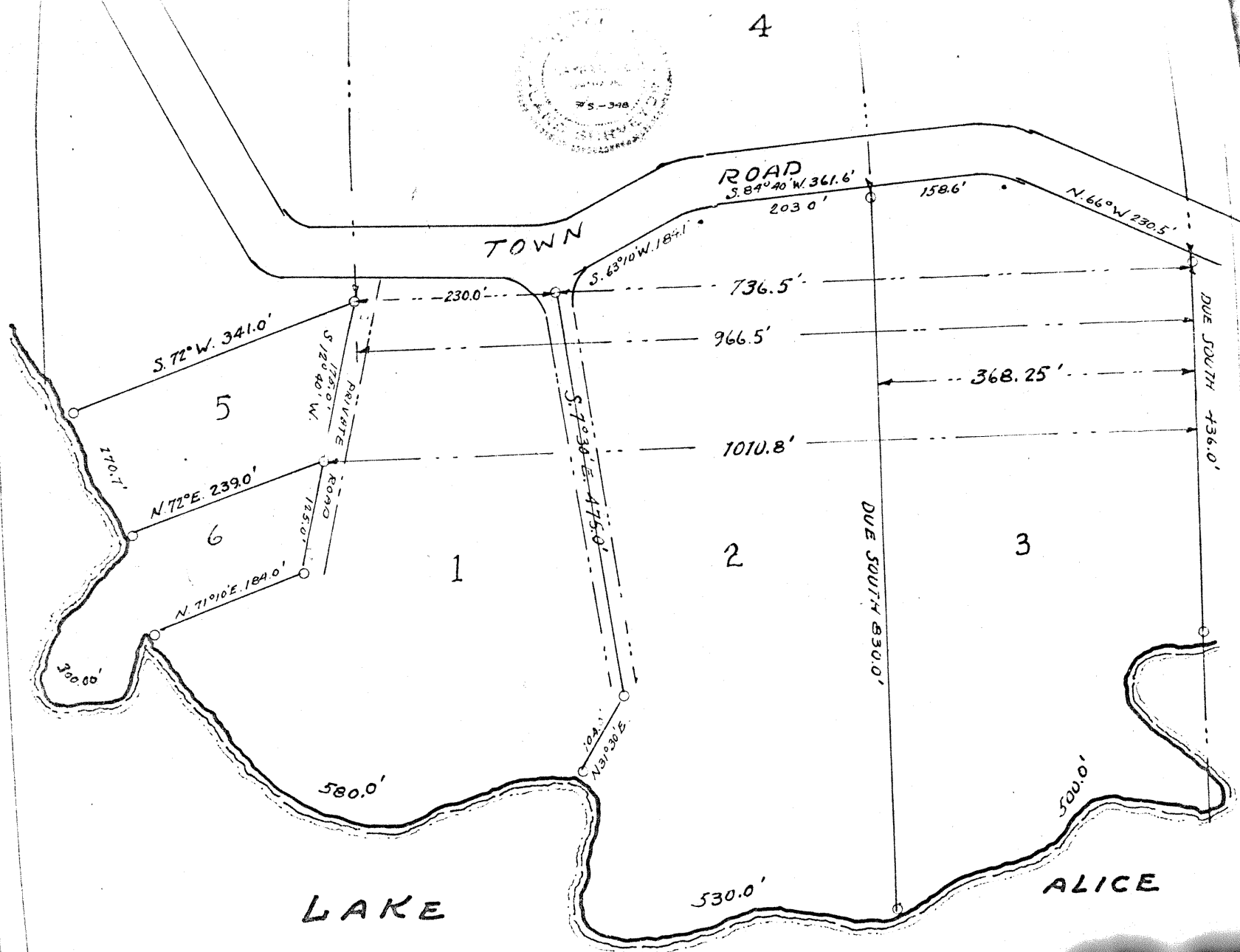
SURVEYED AND MAPPED BY R.A. SAYERS, SR.  
 JUNE 6TH TO SEPT. 19TH, 1957.  
 I, hereby certify that this map is a correct  
 representation of the lands surveyed.  
 Signed: R.A. Sayers Sr.

RECEIVED AT LINCOLN COUNTY  
 COURTHOUSE THIS \_\_\_\_\_ DAY  
 OF \_\_\_\_\_ 19\_\_\_\_  
 TAX DESCRIPTION OFFICE

1304.5'

7210.83'

DUE SOUTH 128793'



58

A