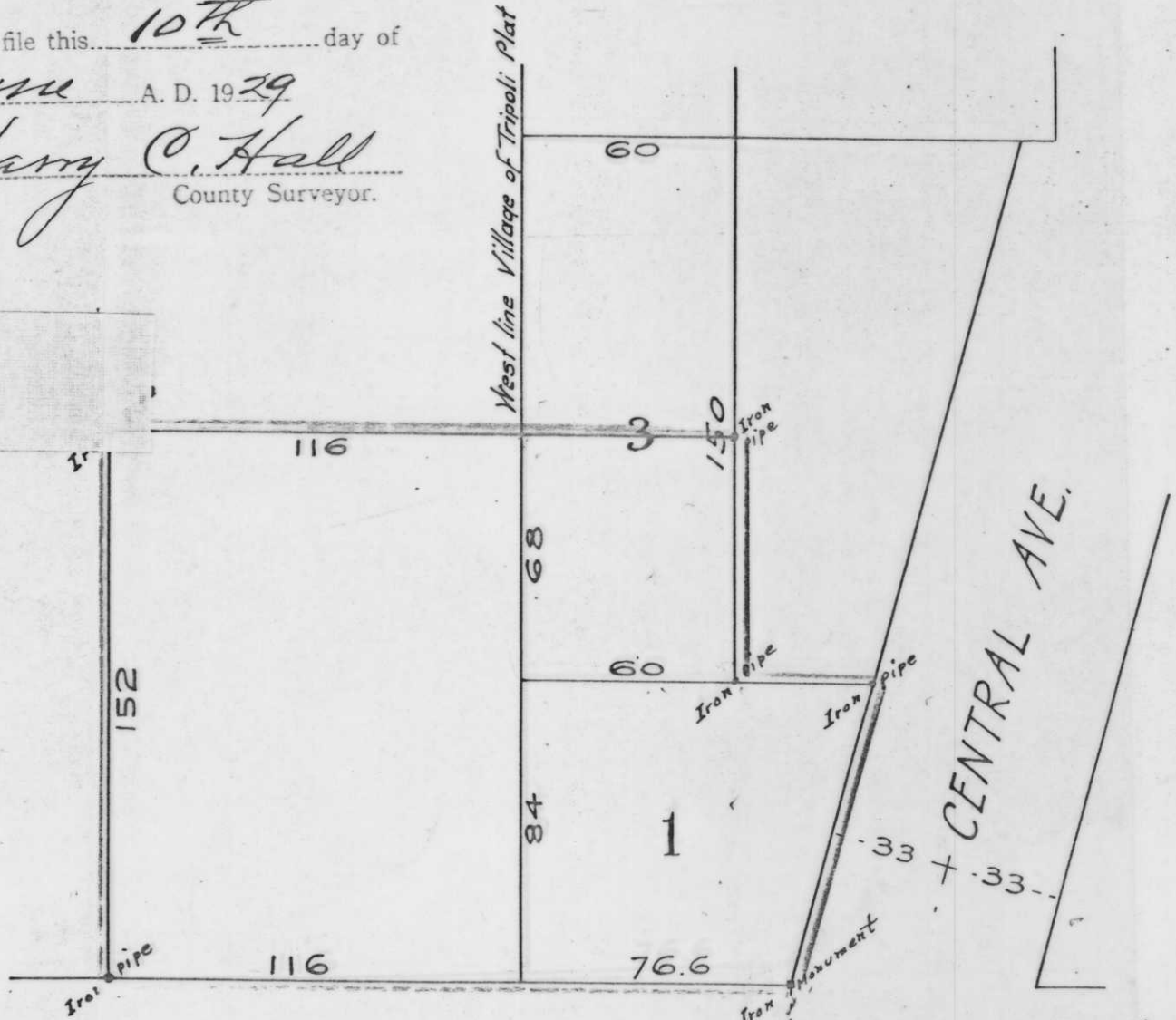


RHINELANDER, WIS.  
 OFFICE OF COUNTY SURVEYOR  
 ONEIDA COUNTY

Copy  
 Placed on file this 10<sup>th</sup> day of

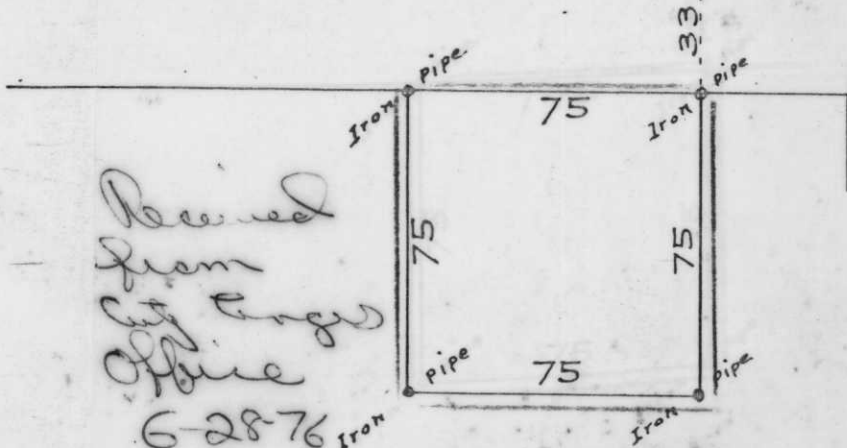
June A. D. 1929  
Harry C. Hall  
 County Surveyor.



SEC. 33-T36N. R 4E.  
 SEC. 4-T35N. R 4E.

STOLLE ST.

From '45.  
 531.3



Scale  
 1 inch = 50 feet

4-35-4 NW<sup>1</sup>/<sub>4</sub> NW<sup>1</sup>/<sub>4</sub>