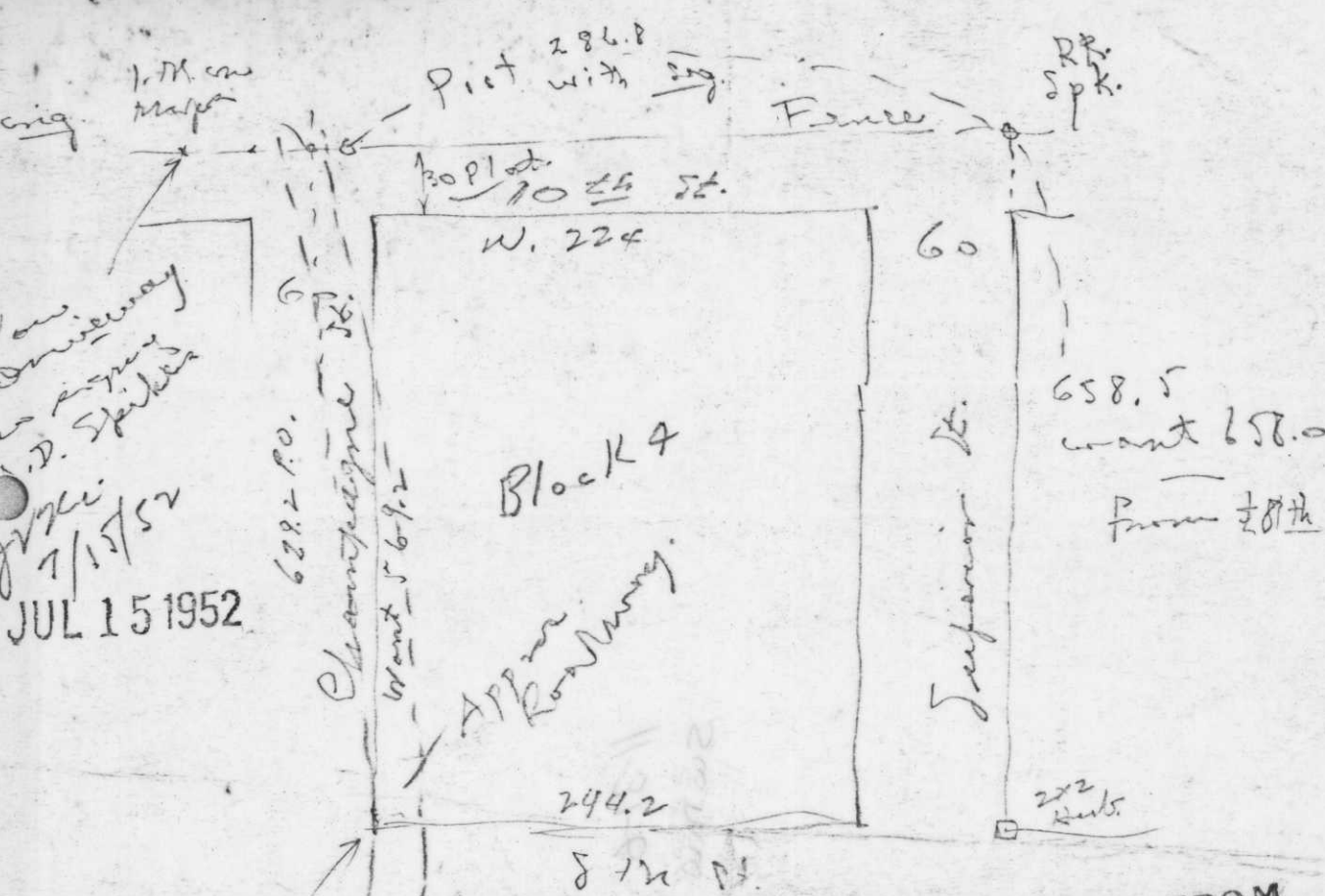


SSS



This Point on  
W. edge of travelled  
way of road.

Note:

For looking for monuments  
for Chauguana St. & Jeffrey Alder.

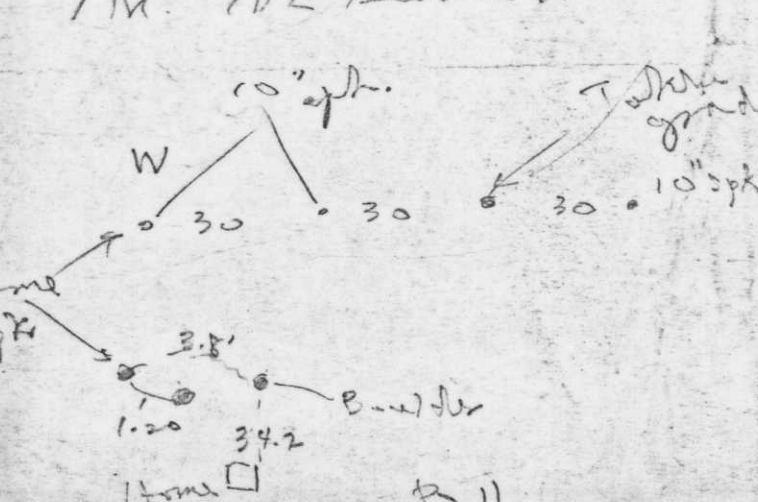
RECEIVED FROM  
J. C. ENGR., 3. 23. 78

11-31-6

SW 1/4 NW 1/4

Chauguana St. & 10th St

1 M. NE Fence Post 0.55 NW. E.P. 45.96 SW E.P. 41.29



0-122