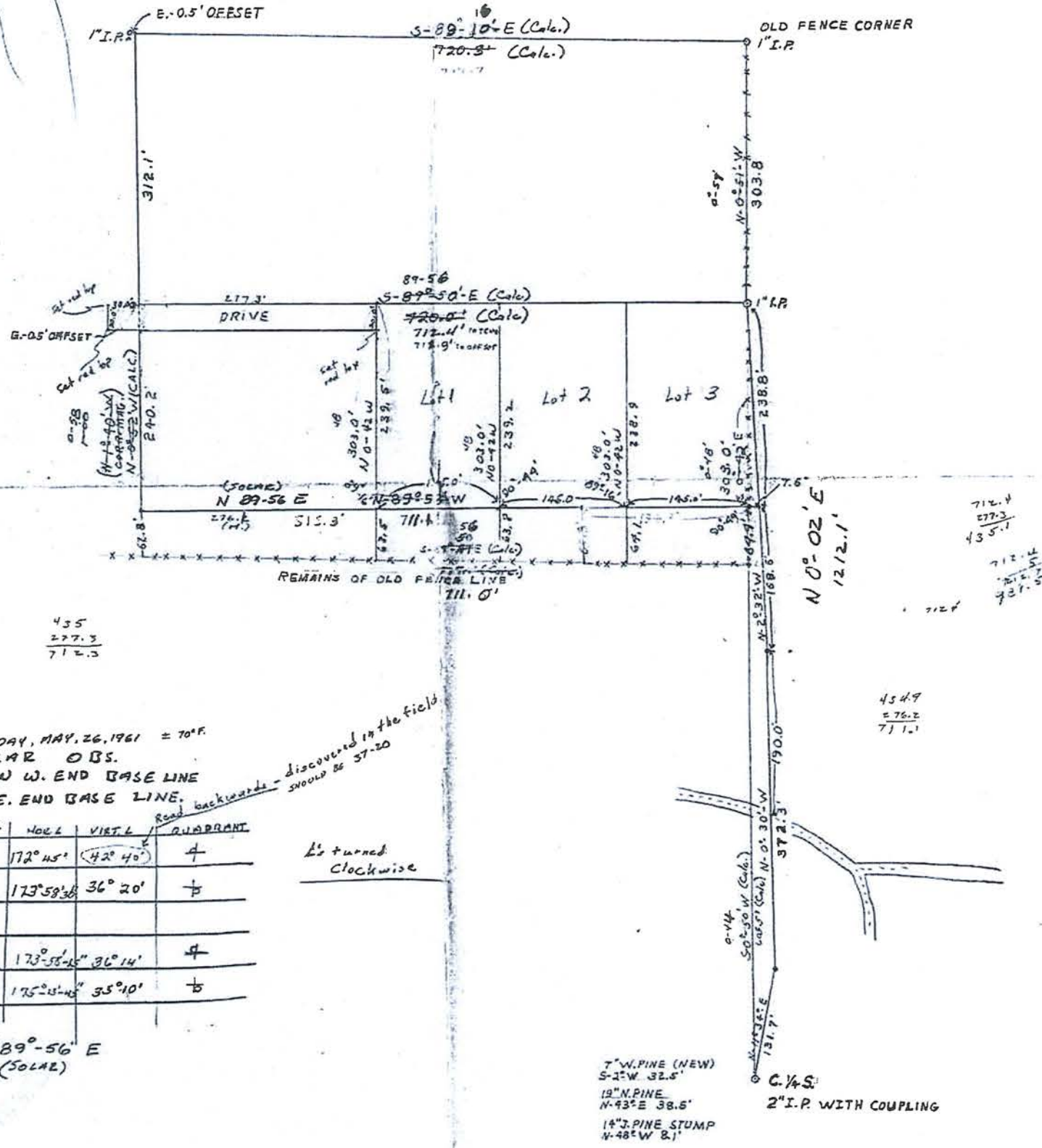


SEC. 3
 T. 34 N.; R. 6 E
 R. TREILER
 1" = 100'



FRIDAY, MAY 26, 1961 = 70°F.
 SOLAR OBS.
 SAT ON W. END BASE LINE
 B.S. E. END BASE LINE.

POSITION	CENT. O.C.S. TIME	NO. L	VIRT. L	QUADRANT
O	4:47 1/2	172° 45'	42° 40'	A
I	4:50	173° 58' 38"	36° 20'	B
O	4:53 1/2	173° 55' 15"	36° 14'	A
I	4:57	175° 45' 40"	35° 10'	B

N 89°-56' E
 (SOLAR)

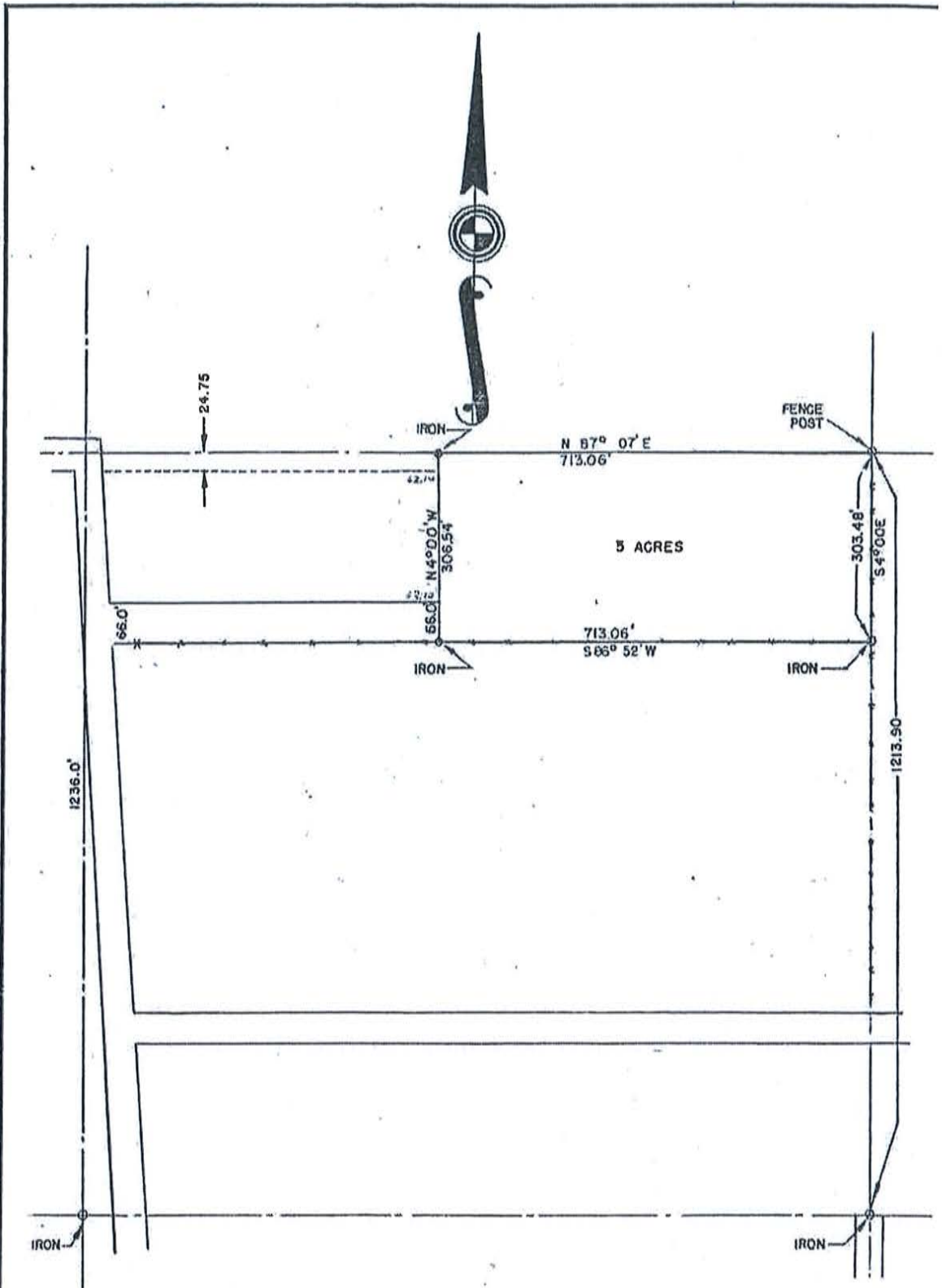
7" W. PINE (NEW)
 S-21° W. 32.5'
 12" N. PINE
 N-43° E. 38.5'
 14" J. PINE STUMP
 N-48° W. 8.1'

C. 1/4 S.
 2" I.P. WITH COUPLING

RECEIVED BY LINCOLN COUNTY
 SURVEYOR THIS 14TH DAY
 OF December 20 15
Tom Rahn
 COUNTY SURVEYOR

5559A

28-51
23-99



NOTE: BEARINGS SHOWN ARE
MAGNETIC BEARINGS

RECEIVED BY LINCOLN COUNTY
SURVEYOR THIS 19TH DAY
OF December 20 15
Tommy Walker
COUNTY SURVEYOR

WISCONSIN NATIONAL GUARD ARMORY SITE
TOMAHAWK, WISCONSIN
EAST 5 ACRES OF THE N 1/2 OF THE N 1/2,
OF THE SE 1/4 OF THE NW 1/4, SEC. 3, TWP 34 N,
R6E, LINCOLN COUNTY WISCONSIN

DRAWN BY R. M. D.	FOR STATE OF WISCONSIN	DATE 1 / 23 / 60
SURVEY BY G. G. B.	31 BECHER-HOPPE ENGINEERS INC. SCHOFIELD, WIS.	FILE NUMBER
SCALE		SHEET NUMBER

5559B