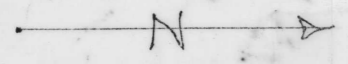
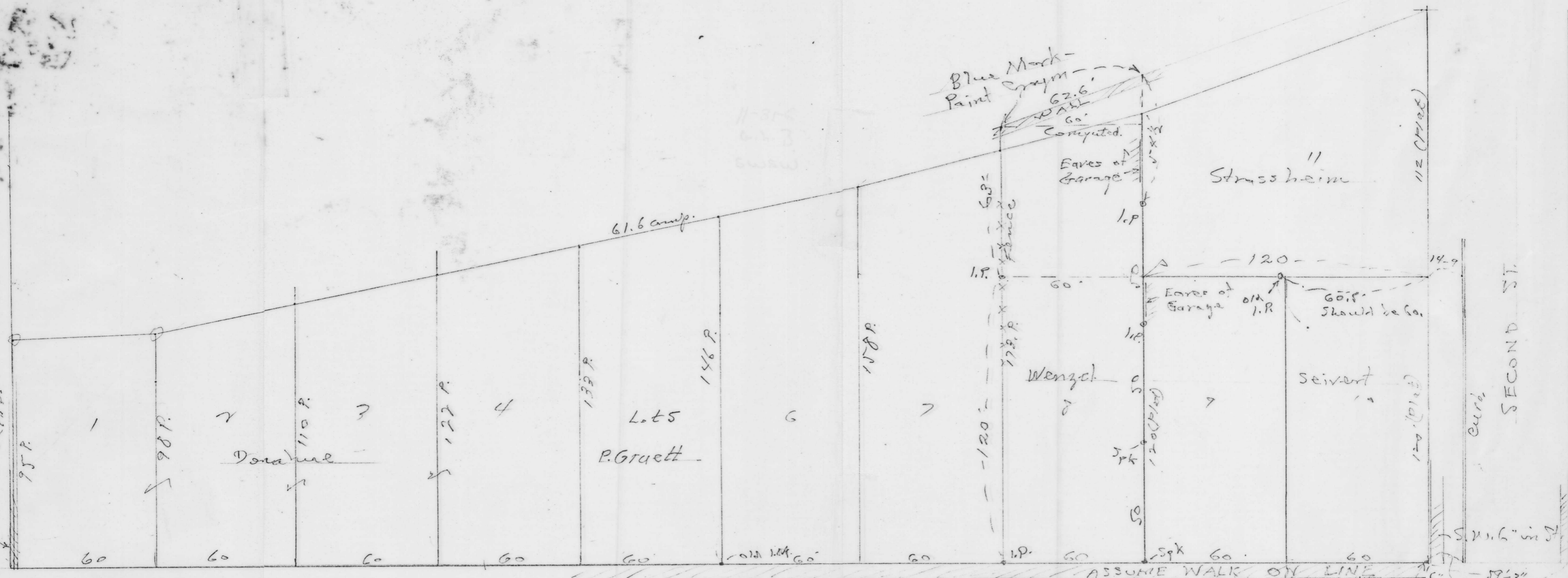


PLAT OF BLOCK 6-  
McCord & Wright's Addn.  
Eng Run - 6-15-53. 8 p. 72



W. MAIN ST.

Wall 1.5' in Street  
at A.P.



COTTAGE ST.

Received from City Engis  
Office 6-28-76

11-31-6 G.L. 3  
SW $\frac{1}{4}$  SW $\frac{1}{4}$

C-222