

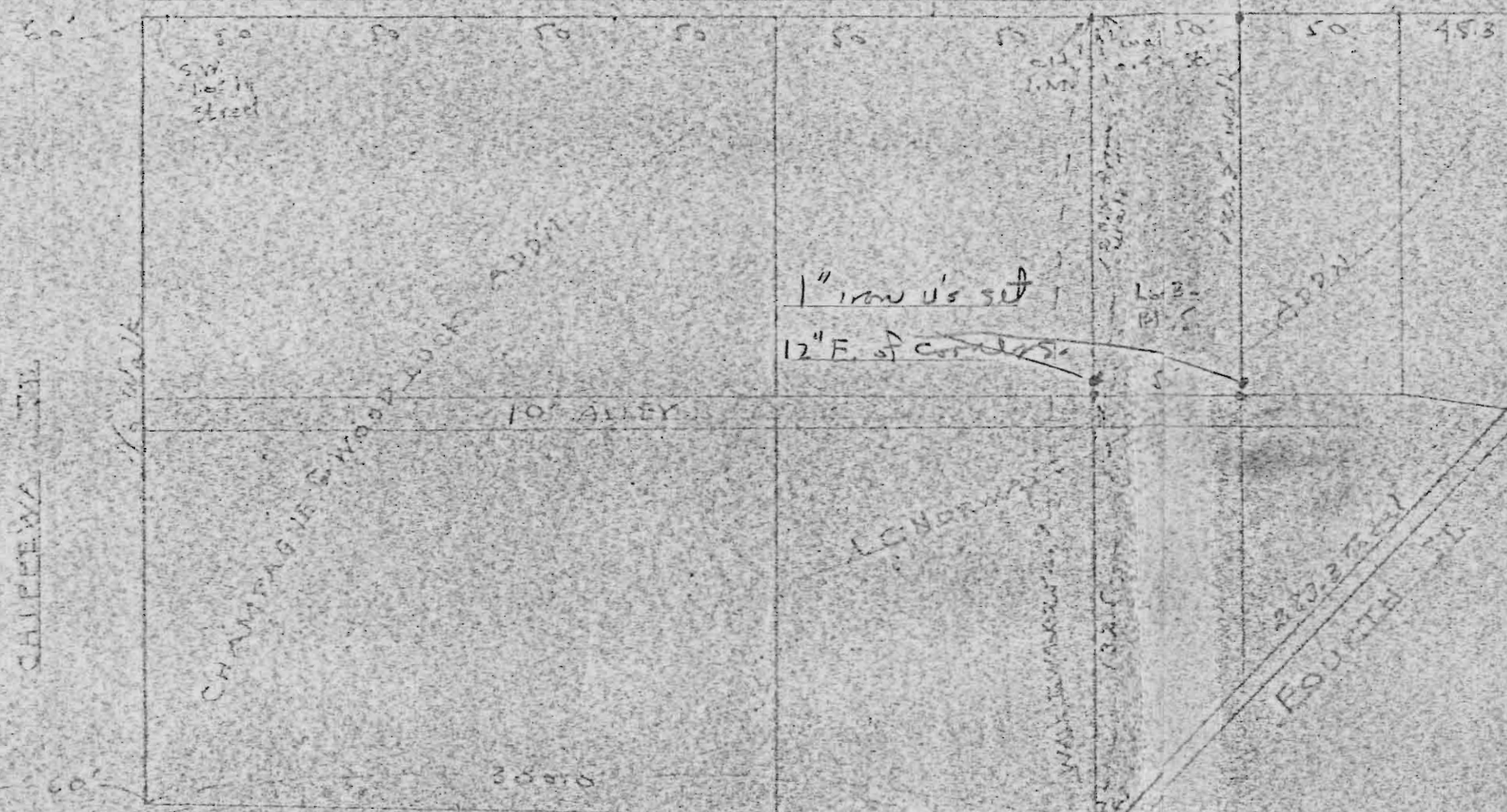


GRAND AVE.

± Pavement

200

22.5



WALK TO MILK PLANT

CHIPPEWA ST.

CHAMPAGNE & WOODLYN

10' ALLEY

1" iron U's set
12" E. of center

L. NORWAY

FOURTH ST.

WISCONSIN ST.

(Formerly 9th St.)

RECEIVED FROM
CITY ENGR. 6.28.76

11-31-6 NW 1/4 SW 1/4

B

PART OF A.C. NORWAY'S ADD
 S. OF CHAMPAGNE & WOODLYN
 ADDN. CITY OF MERRILL
 Scale 1" = 50'
 John Mangold, P.E. 9/23
 C-22
 229