

**LEGEND**

- EXISTING IRON PIPE W/ SIZE NOTED
- 3/4"x18" REBAR W/RED PLASTIC CAP
- EXISTING IRON ROD W/ SIZE NOTED

**SURVEYOR'S CERTIFICATE**

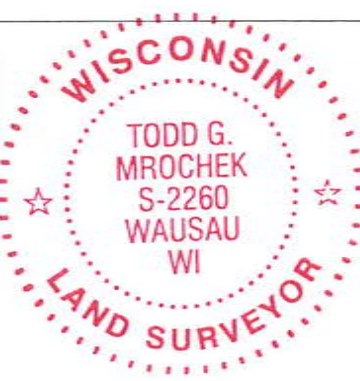
I, Todd G. Mrochek, Registered Land Surveyor of the State of Wisconsin, under the direction of the City of Merrill Municipal Airport, have made a survey of all that land owned by said Airport as shown hereon. Said land being subject to all easements, restrictions and roadways of record.

I also certify that I have complied with the provisions of Chapter 236.24 of the revised Wisconsin Statutes. I further certify to the best of my knowledge and belief that the accompanying map is a true and correct representation of the exterior boundaries of the land surveyed according to official records.

Dated this 15<sup>th</sup> day of DEC. 2007

*Todd G. Mrochek*

For: BECHER-HOPPE ASSOCIATES, INC.  
By: Todd G. Mrochek, S-2260



RECEIVED BY LINCOLN COUNTY SURVEYOR THIS 8<sup>TH</sup> DAY OF October 2014

*Tom Wahn*  
COUNTY SURVEYOR

SEE SHEET 3

SECTION 3

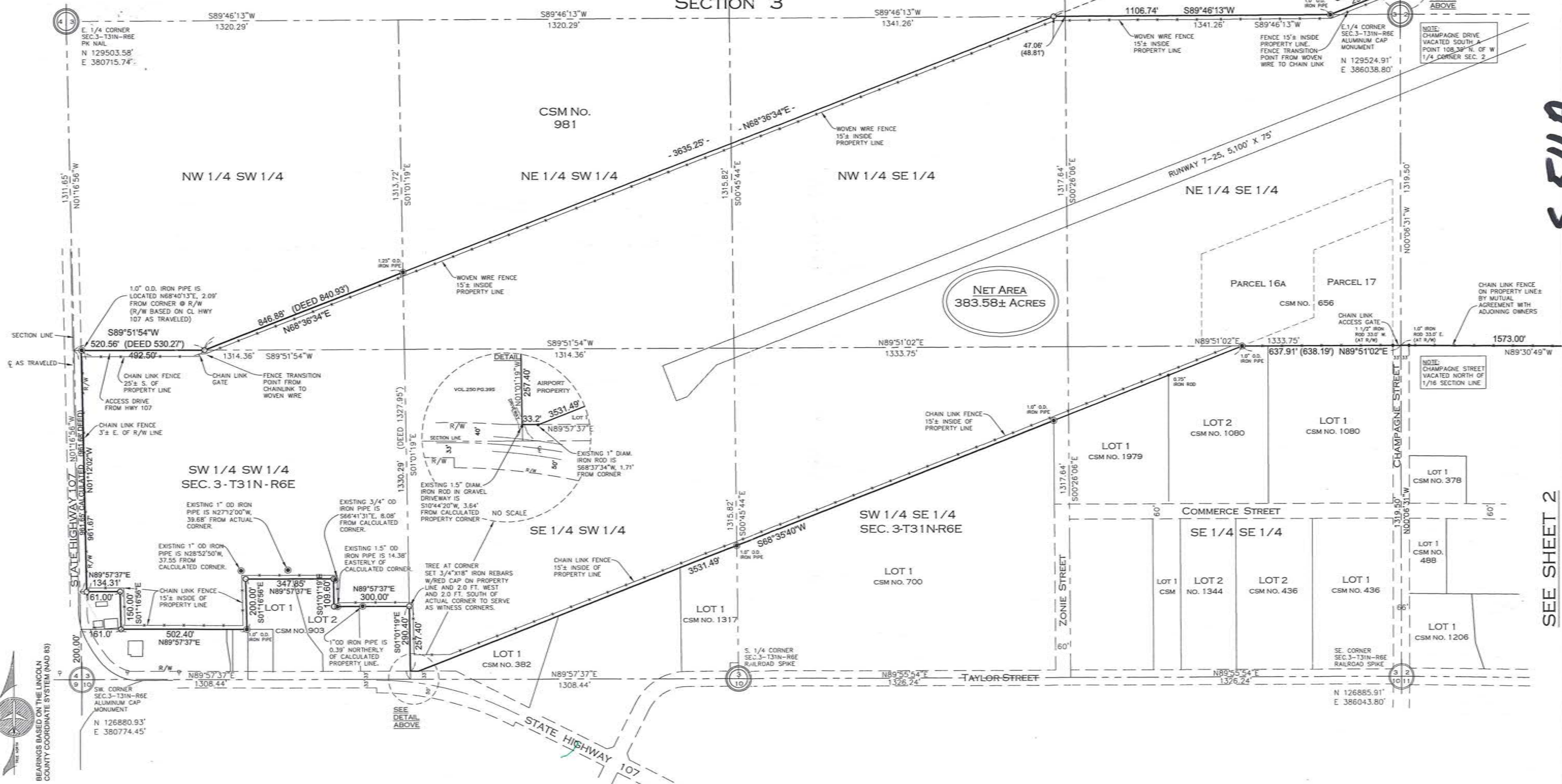
XREFS: CORNERS AND BRACE

ALIGNMENT: SNAPSHOT:

LAYOUT: 1  
FILE NAME: P:\BHA Projects\2008\2008-031\dwg\Survey Pls\05031Plat of Survey.dwg 1/8/2008 4:40:02 PM CST

5511A

SEE SHEET 2

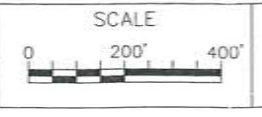


**Becher Hoppe**  
Engineers and Architects

330 Fourth Street • PO Box 8000  
Wausau, WI • 54402-8000  
715.845.8000 • Fax 715.845.8008  
becherhoppe.com

DRAWN BY: TGM  
CHECKED BY: LTK  
DATE: 12/1/07

PROJECT NO.: 2005.031  
REV. DATES:

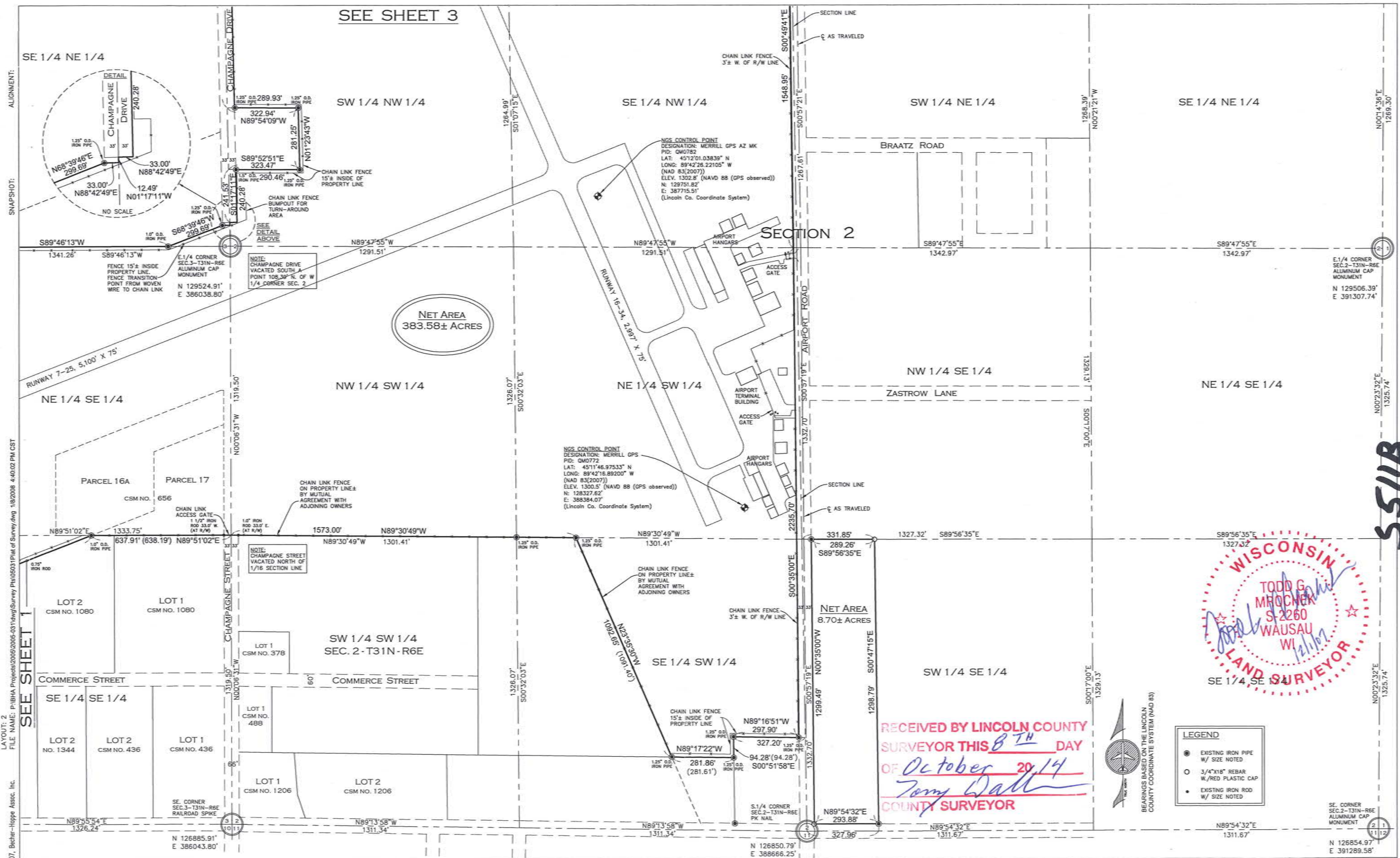


MERRILL MUNICIPAL AIRPORT PROPERTY  
CITY OF MERRILL, LINCOLN COUNTY, WI

PLAT OF SURVEY  
DECEMBER 2007

SHEET  
1





ALIGNMENT: XREFS: CORNERS AND BRACE  
 SNAPSHOT: YREFS: CORNERS AND BRACE  
 LAYOUT: 2  
 FILE NAME: P:\BHA Projects\2005\2005-031\dwg\Survey Pls\05031Plat of Survey.dwg 1/8/2008 4:40:02 PM CST  
 Copyright 2007, Becher-Hoppe Assoc. Inc.

SEE SHEET 3

SE 1/4 NE 1/4

SW 1/4 NW 1/4

SE 1/4 NW 1/4

SW 1/4 NE 1/4

SE 1/4 NE 1/4

S89°46'13"W  
 1341.26'

N89°47'55"W  
 1291.51'

N89°47'55"W  
 1291.51'

S89°47'55"E  
 1342.97'

S89°47'55"E  
 1342.97'

NET AREA  
 383.58± ACRES

NE 1/4 SE 1/4

NW 1/4 SW 1/4

NE 1/4 SW 1/4

NW 1/4 SE 1/4

NE 1/4 SE 1/4

PARCEL 16A  
 CSM NO. 656

PARCEL 17  
 CSM NO. 656

LOT 2  
 CSM NO. 1080

LOT 1  
 CSM NO. 1080

LOT 1  
 CSM NO. 378

SW 1/4 SW 1/4  
 SEC. 2-T31N-R6E

SE 1/4 SW 1/4

NET AREA  
 8.70± ACRES

SW 1/4 SE 1/4

COMMERCE STREET

COMMERCE STREET

SE 1/4 SE 1/4

LOT 2  
 NO. 1344

LOT 2  
 CSM NO. 436

LOT 1  
 CSM NO. 436

LOT 1  
 CSM NO. 488

LOT 1  
 CSM NO. 1206

LOT 2  
 CSM NO. 1206

N89°55'34"E  
 1326.24'

N 126885.91'  
 E 386043.80'

N89°13'58"W  
 1311.34'

N89°13'58"W  
 1311.34'

N89°54'32"E  
 293.88'

N89°54'32"E  
 1311.67'

N89°54'32"E  
 1311.67'

N 126854.97'  
 E 391289.58'

Becher Hoppe  
 Engineers and Architects  
 330 Fourth Street • PO Box 8000  
 Wausau, WI • 54402-8000  
 715.845.8000 • Fax 715.845.8008  
 becherhoppe.com

DRAWN BY: TGM  
 CHECKED BY: LTK  
 PROJECT NO.: 2005.031  
 REV. DATES:  
 DATE: 12/1/07

SCALE  
 0 200' 400'

MERRILL MUNICIPAL AIRPORT PROPERTY  
 CITY OF MERRILL, LINCOLN COUNTY, WI

PLAT OF SURVEY  
 DECEMBER 2007  
 SHEET  
 2

WISCONSIN  
 TODD G. MROCZEK  
 S-2260  
 WAUSAU  
 WI  
 12/1/07  
 LAND SURVEYOR

RECEIVED BY LINCOLN COUNTY  
 SURVEYOR THIS 8<sup>TH</sup> DAY  
 OF October 20, 14  
 Jerry Dalt  
 COUNTY SURVEYOR

LEGEND  
 ● EXISTING IRON PIPE  
 W/ SIZE NOTED  
 ○ 3/4"x1/8" REBAR  
 W./RED PLASTIC CAP  
 ● EXISTING IRON ROD  
 W/ SIZE NOTED



BEARINGS BASED ON THE LINCOLN  
 COUNTY COORDINATE SYSTEM (NAD 83)

SE CORNER  
 SEC. 2-T31N-R6E  
 ALUMINUM CAP  
 MONUMENT

N001°4'36"E  
 1269.30'

N002°3'32"E  
 1325.74'

N002°3'32"E  
 1325.74'

N 126854.97'  
 E 391289.58'

SHEET  
 2

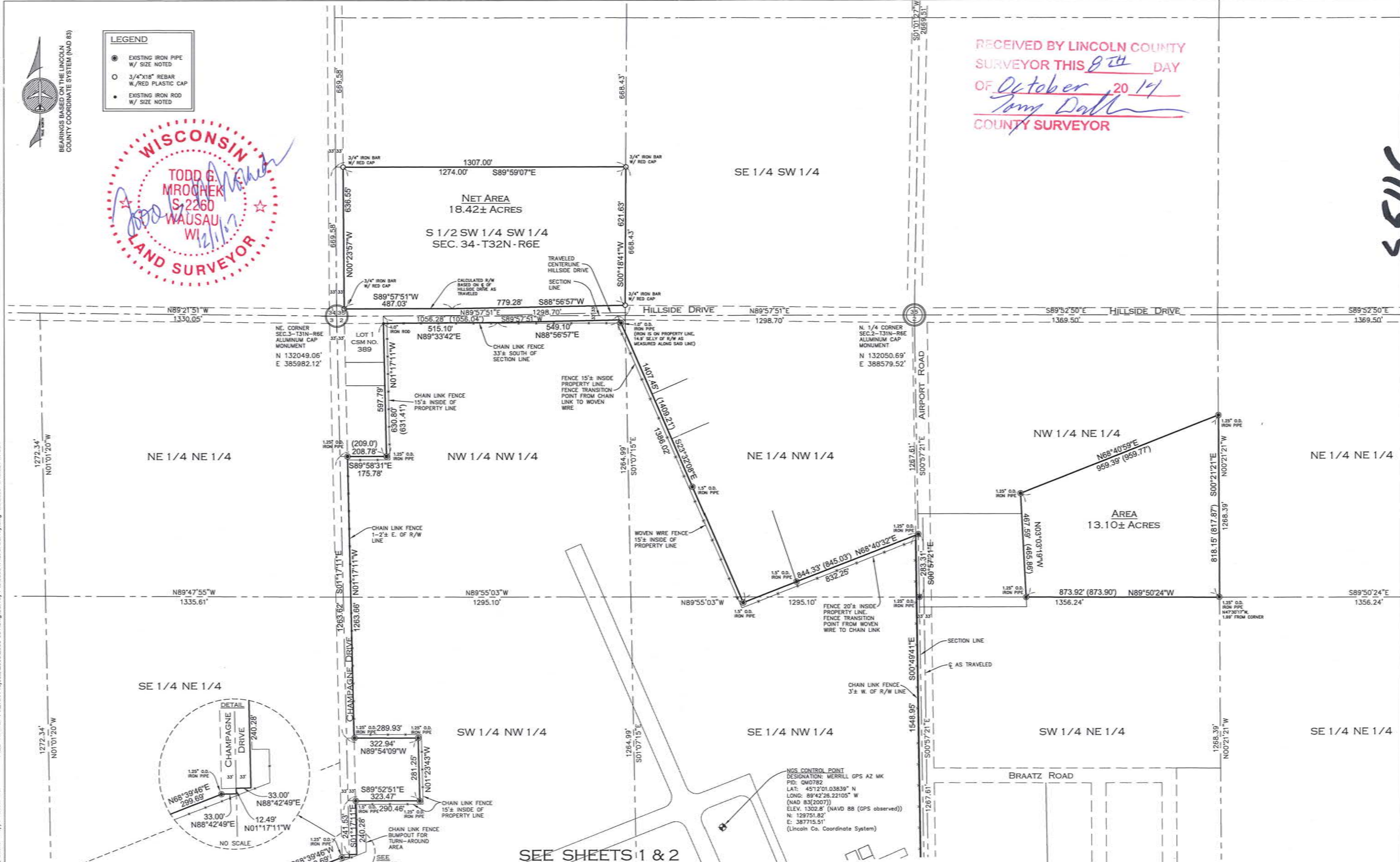


- LEGEND**
- EXISTING IRON PIPE W/ SIZE NOTED
  - 3/4"x18" REBAR W/RED PLASTIC CAP
  - EXISTING IRON ROD W/ SIZE NOTED



RECEIVED BY LINCOLN COUNTY SURVEYOR THIS 8<sup>TH</sup> DAY OF October 20 14  
*Tommy Daulton*  
 COUNTY SURVEYOR

SSIC



SEE SHEETS 1 & 2

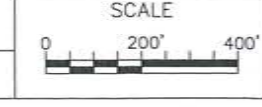
XREFS: 05553\_CORNERS AND BRACE  
 ALIGNMENT:  
 SNAPSHOT:  
 LAYOUT: 3  
 FILE NAME: P:\BHA Projects\2005\2005-031\dwg\Survey Pls\05031.Plot of Survey.dwg 1/8/2008 4:40:02 PM CST  
 Copyright 2007, Becher-Hoppe Assoc. Inc.

**Becher Hoppe**  
 Engineers and Architects

330 Fourth Street • PO Box 8000  
 Wausau, WI • 54402-8000  
 715.845.8000 • Fax 715.845.8008  
 becherhoppe.com

DRAWN BY: TGM  
 CHECKED BY: LTK  
 DATE: 12/1/07

PROJECT NO.: 2005.031  
 REV. DATES:



MERRILL MUNICIPAL AIRPORT PROPERTY  
 CITY OF MERRILL, LINCOLN COUNTY, WI

PLAT OF SURVEY  
 DECEMBER 2007

SHEET  
 3