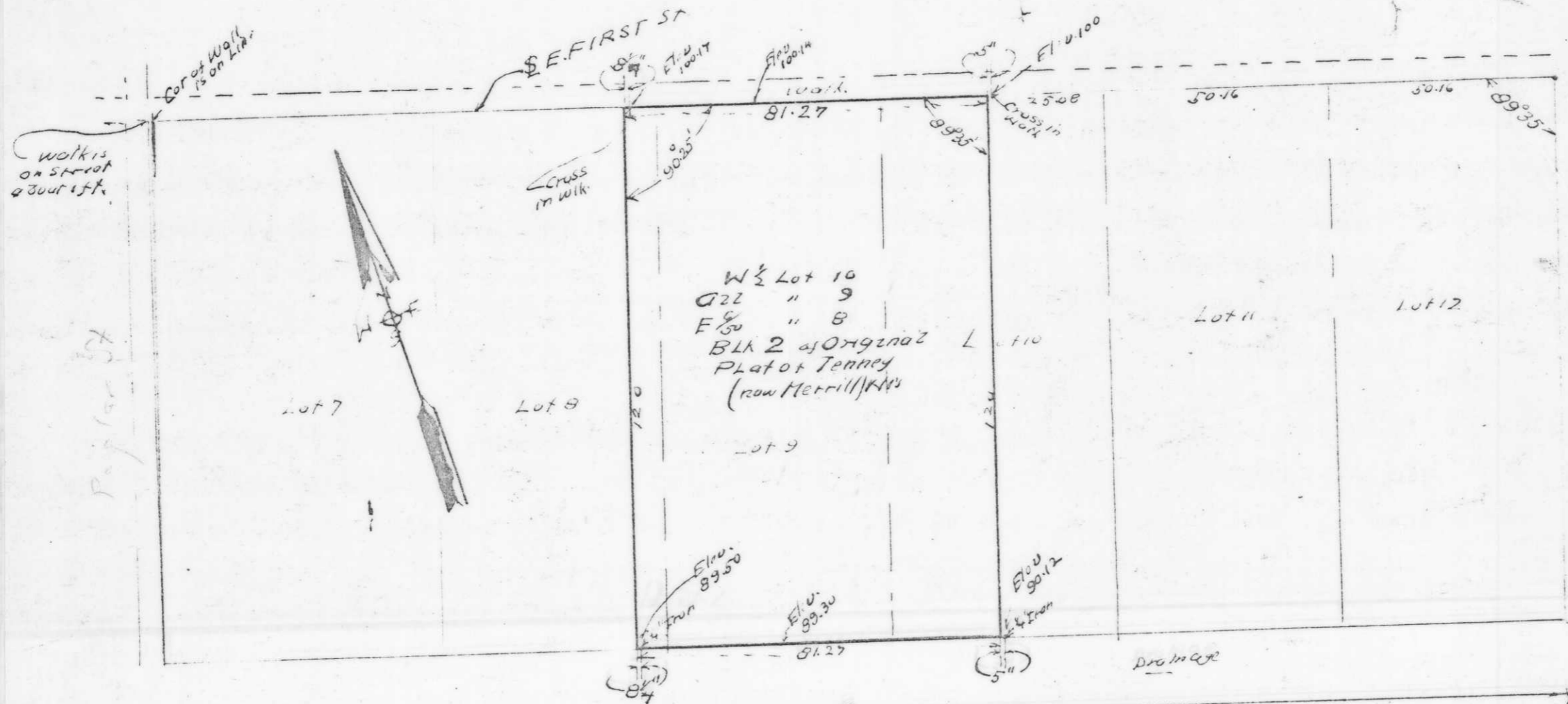


E. FIRST ST.



Elev. Doors 11 To Store 89.60

Received from
City Engineer Office
6-28-76

12-31-6 G.L. 3 (SE 1/4 SW 1/4)

Surveyors Certificate.

This is a correct plat of survey of E 1/2 of Lot 10, all of Lot 9 and the E 1/2 of Lot 8 of Block 2 of the Original plat of Jenney (now Merrill) Wis. The Block over runs 1.05 ft on the North side. The stakes and crosses are at the unproportioned distance as measured from the NE corner of the Block, therefore the cross and iron on the E. side are 5 inches East of the Line and the same are 8 1/4 inches East of the West Line.

Signed *Walter J. Taylor* City Engineer
Witnessed by F. Fuchs Aug 17/1970

Scale 30' = 1"

E. MAIN ST.

SA 121