



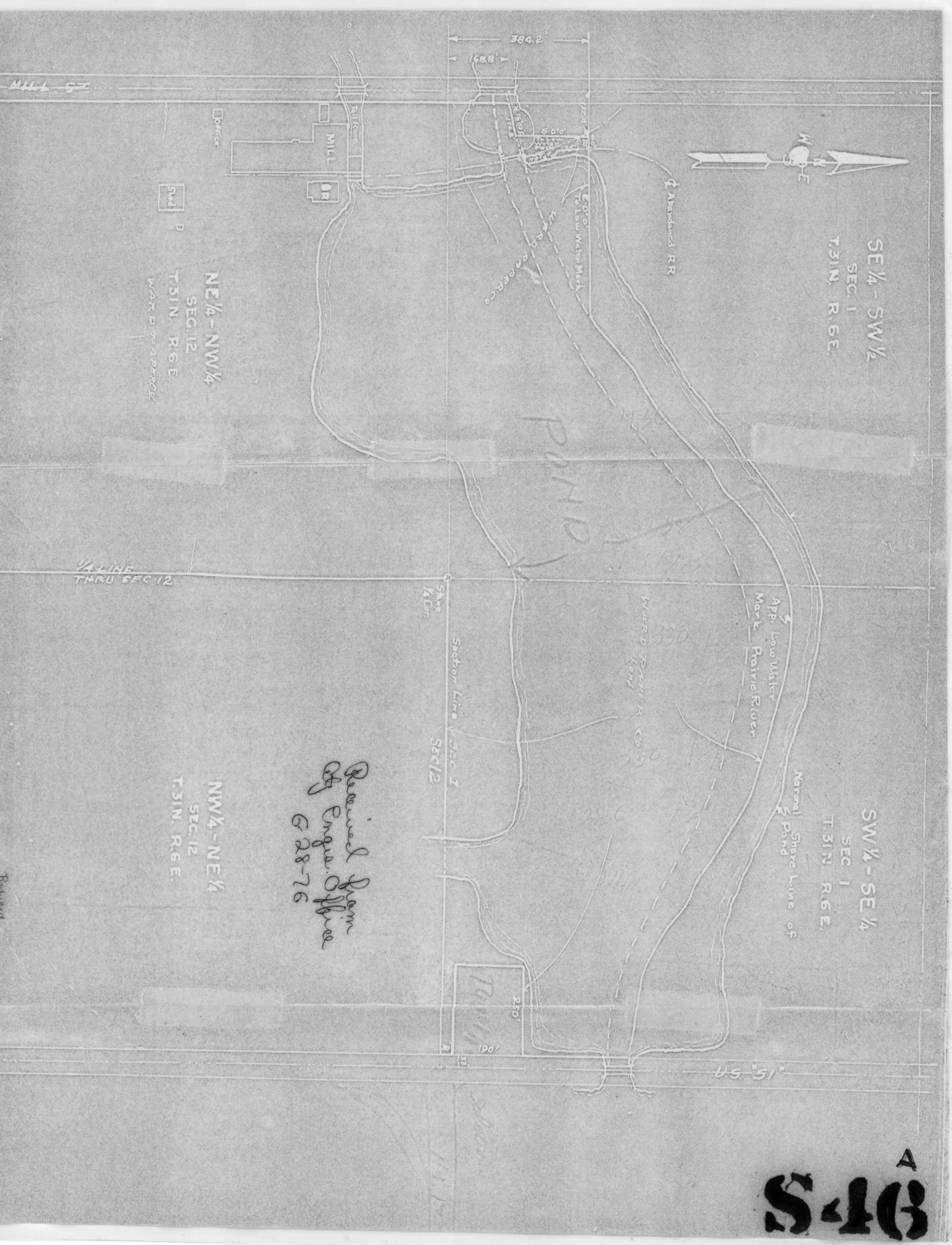
SE 1/4 - SW 1/2
SEC. 12
T. 31N., R. 6E.

SW 1/4 - SE 1/4
SEC. 12
T. 31N., R. 6E.

NE 1/4 - NW 1/4
SEC. 12
T. 31N., R. 6E.
WARD PAPER CO.

NW 1/4 - NE 1/4
SEC. 12
T. 31N., R. 6E.

*Received from
of Eng. Office
6-28-76*



975
A