

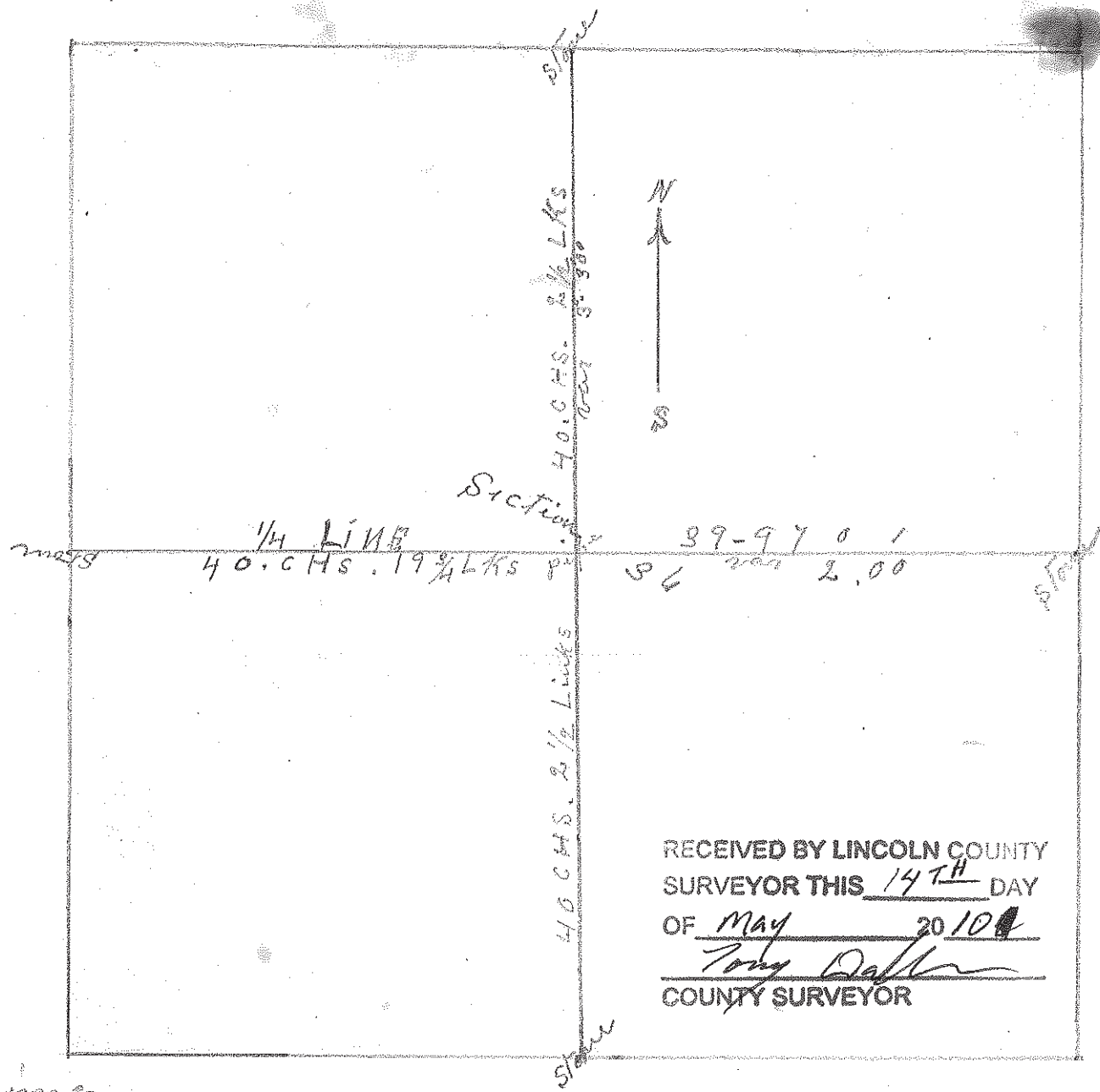
OFFICE OF
COUNTY SURVEYOR

MARATHON COUNTY
R. H. BROWN, Surveyor

TOWN - ? (30)
RANGE - 5
SEC. - 36

UNITY, WIS. Sept 4. 1930

Subdivision of Sect 36 Town 81 Range 5 East
as made by me this 4th day September A.D. 1930
and that the same is correct as my belief
Signed R. H. Brown County Surveyor Marathon



RECEIVED BY LINCOLN COUNTY
SURVEYOR THIS 14TH DAY
OF MAY 20 1901
Tony Dallen
COUNTY SURVEYOR

men
Edgar Ayer
August Radloff

S423A