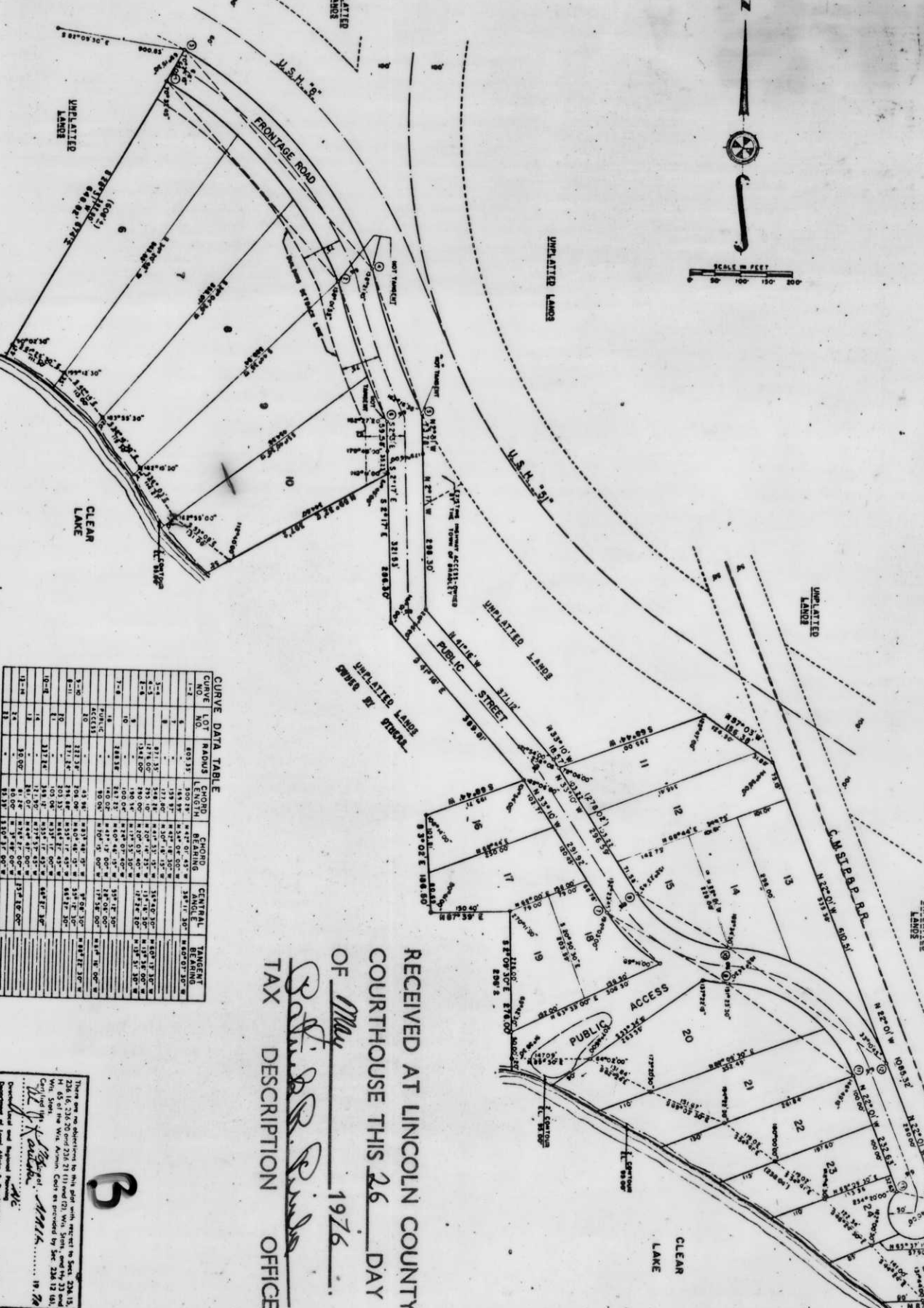


HOLLOWAY MANOR

LINCOLN COUNTY, WISCONSIN
 LOCATED IN GOVERNMENT LOTS 2, 3, AND 4,
 SECTION 10, TOWNSHIP 35 NORTH, RANGE 6 EAST,
 TOWN OF BRADLEY, WISCONSIN.



RECEIVED AT LINCOLN COUNTY
 COURTHOUSE THIS 26 DAY
 OF May 1976

[Signature]
 TAX DESCRIPTION OFFICE

CURVE NO.	LOT	RADIUS	CHORD	CENTRAL ANGLE	TANGENT
1-1	1-1	135.00	120.00	45.00°	108.00
1-2	1-2	135.00	120.00	45.00°	108.00
2-1	2-1	135.00	120.00	45.00°	108.00
2-2	2-2	135.00	120.00	45.00°	108.00
3-1	3-1	135.00	120.00	45.00°	108.00
3-2	3-2	135.00	120.00	45.00°	108.00
4-1	4-1	135.00	120.00	45.00°	108.00
4-2	4-2	135.00	120.00	45.00°	108.00
5-1	5-1	135.00	120.00	45.00°	108.00
5-2	5-2	135.00	120.00	45.00°	108.00
6-1	6-1	135.00	120.00	45.00°	108.00
6-2	6-2	135.00	120.00	45.00°	108.00
7-1	7-1	135.00	120.00	45.00°	108.00
7-2	7-2	135.00	120.00	45.00°	108.00
8-1	8-1	135.00	120.00	45.00°	108.00
8-2	8-2	135.00	120.00	45.00°	108.00
9-1	9-1	135.00	120.00	45.00°	108.00
9-2	9-2	135.00	120.00	45.00°	108.00
10-1	10-1	135.00	120.00	45.00°	108.00
10-2	10-2	135.00	120.00	45.00°	108.00
11-1	11-1	135.00	120.00	45.00°	108.00
11-2	11-2	135.00	120.00	45.00°	108.00
12-1	12-1	135.00	120.00	45.00°	108.00
12-2	12-2	135.00	120.00	45.00°	108.00
13-1	13-1	135.00	120.00	45.00°	108.00
13-2	13-2	135.00	120.00	45.00°	108.00
14-1	14-1	135.00	120.00	45.00°	108.00
14-2	14-2	135.00	120.00	45.00°	108.00
15-1	15-1	135.00	120.00	45.00°	108.00
15-2	15-2	135.00	120.00	45.00°	108.00
16-1	16-1	135.00	120.00	45.00°	108.00
16-2	16-2	135.00	120.00	45.00°	108.00
17-1	17-1	135.00	120.00	45.00°	108.00
17-2	17-2	135.00	120.00	45.00°	108.00
18-1	18-1	135.00	120.00	45.00°	108.00
18-2	18-2	135.00	120.00	45.00°	108.00
19-1	19-1	135.00	120.00	45.00°	108.00
19-2	19-2	135.00	120.00	45.00°	108.00
20-1	20-1	135.00	120.00	45.00°	108.00
20-2	20-2	135.00	120.00	45.00°	108.00
21-1	21-1	135.00	120.00	45.00°	108.00
21-2	21-2	135.00	120.00	45.00°	108.00
22-1	22-1	135.00	120.00	45.00°	108.00
22-2	22-2	135.00	120.00	45.00°	108.00
23-1	23-1	135.00	120.00	45.00°	108.00
23-2	23-2	135.00	120.00	45.00°	108.00
24-1	24-1	135.00	120.00	45.00°	108.00
24-2	24-2	135.00	120.00	45.00°	108.00
25-1	25-1	135.00	120.00	45.00°	108.00
25-2	25-2	135.00	120.00	45.00°	108.00

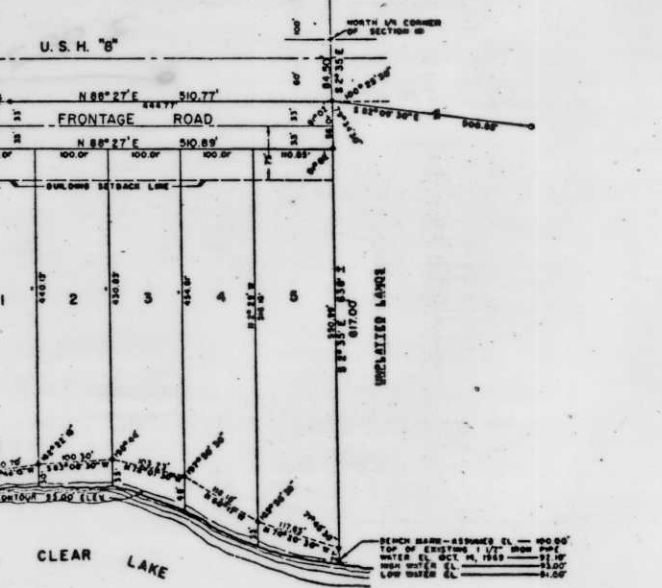
There are no objections to this plat with respect to Sect. 23A 13, 23B 14, 23C 15 of the Wisconsin Statutes, and to the provisions of Ch. 226, Sec. 14, 15 of the Wisconsin Statutes, and to the provisions of the Wisconsin Constitution and of the Local Governmental Organization Act, Chapter 190, Wisconsin Statutes.

[Signature]
 1976

B

HOLLOWAY MANOR
 LINCOLN COUNTY

LOCATED IN GOVERNMENT LOTS 2, 3, AND 4,
 SECTION 10, TOWNSHIP 35 NORTH, RANGE 6 EAST,
 TOWN OF BRADLEY, WISCONSIN.



COUNTY CLERK'S CERTIFICATE
 STATE OF WISCONSIN
 LINCOLN COUNTY

I, Florian Koblar, being the duly elected, qualified and acting treasurer of the County of Lincoln, do hereby certify that no unpaid taxes or special assessments or unredeemed tax sales and no unpaid taxes or special assessments or unredeemed tax sales affecting the lands included in the plat of Holloway Manor.

TOWN BOARD RESOLUTION
 Florian Koblar, County Treasurer

Resolved, that the plat of Holloway Manor in the Town of Bradley, Charles Holloway and Walter A. Holloway, owners, is hereby approved by the town board.

Date: 1976
 Approved: Herbert Koch, Town Chairman
 Signed: Herbert Koch, Town Chairman

I, hereby certify that the foregoing is a copy of a resolution adopted by the town board of the town of Bradley.

Margaret VanDusen, Town Clerk

LINCOLN COUNTY PLANNING AGENCY RESOLUTION
 Resolved, by the Lincoln County Planning Agency that the plat of Holloway Manor, be and the same is hereby approved.

STATE OF WISCONSIN
 LINCOLN COUNTY)

Herby certify that the above resolution was passed by said agency at its meeting held on the 19 day of May, 1976

[Signature]
 Chairman

SUPERVISOR'S CERTIFICATE
 I, Gordon Cary Bush, registered land surveyor, hereby certify:

That I have surveyed, divided and mapped Holloway Manor located in Government Lots 2, 3, 4, and 10, Section 10, Township 35 North, Range 6 East, Lincoln County, Wisconsin, 10-11; commencing at the north-south corner of said Section 10, 64.30 feet to the line between said Government Lots 2, 3, and 4 to a point which is 21 feet more or less from the water containing 82.52', 81.70', 80.19', 79.18', 78.38', 77.65', 77.00', 76.42', 75.90', 75.42', 75.00', 74.62', 74.30', 74.00', 73.70', 73.40', 73.10', 72.80', 72.50', 72.20', 71.90', 71.60', 71.30', 71.00', 70.70', 70.40', 70.10', 69.80', 69.50', 69.20', 68.90', 68.60', 68.30', 68.00', 67.70', 67.40', 67.10', 66.80', 66.50', 66.20', 65.90', 65.60', 65.30', 65.00', 64.70', 64.40', 64.10', 63.80', 63.50', 63.20', 62.90', 62.60', 62.30', 62.00', 61.70', 61.40', 61.10', 60.80', 60.50', 60.20', 59.90', 59.60', 59.30', 59.00', 58.70', 58.40', 58.10', 57.80', 57.50', 57.20', 56.90', 56.60', 56.30', 56.00', 55.70', 55.40', 55.10', 54.80', 54.50', 54.20', 53.90', 53.60', 53.30', 53.00', 52.70', 52.40', 52.10', 51.80', 51.50', 51.20', 50.90', 50.60', 50.30', 50.00', 49.70', 49.40', 49.10', 48.80', 48.50', 48.20', 47.90', 47.60', 47.30', 47.00', 46.70', 46.40', 46.10', 45.80', 45.50', 45.20', 44.90', 44.60', 44.30', 44.00', 43.70', 43.40', 43.10', 42.80', 42.50', 42.20', 41.90', 41.60', 41.30', 41.00', 40.70', 40.40', 40.10', 39.80', 39.50', 39.20', 38.90', 38.60', 38.30', 38.00', 37.70', 37.40', 37.10', 36.80', 36.50', 36.20', 35.90', 35.60', 35.30', 35.00', 34.70', 34.40', 34.10', 33.80', 33.50', 33.20', 32.90', 32.60', 32.30', 32.00', 31.70', 31.40', 31.10', 30.80', 30.50', 30.20', 29.90', 29.60', 29.30', 29.00', 28.70', 28.40', 28.10', 27.80', 27.50', 27.20', 26.90', 26.60', 26.30', 26.00', 25.70', 25.40', 25.10', 24.80', 24.50', 24.20', 23.90', 23.60', 23.30', 23.00', 22.70', 22.40', 22.10', 21.80', 21.50', 21.20', 20.90', 20.60', 20.30', 20.00', 19.70', 19.40', 19.10', 18.80', 18.50', 18.20', 17.90', 17.60', 17.30', 17.00', 16.70', 16.40', 16.10', 15.80', 15.50', 15.20', 14.90', 14.60', 14.30', 14.00', 13.70', 13.40', 13.10', 12.80', 12.50', 12.20', 11.90', 11.60', 11.30', 11.00', 10.70', 10.40', 10.10', 9.80', 9.50', 9.20', 8.90', 8.60', 8.30', 8.00', 7.70', 7.40', 7.10', 6.80', 6.50', 6.20', 5.90', 5.60', 5.30', 5.00', 4.70', 4.40', 4.10', 3.80', 3.50', 3.20', 2.90', 2.60', 2.30', 2.00', 1.70', 1.40', 1.10', .80', .50', .20', .00'

Plat bearing reference to the north-south corner of Section 10, Township 35 North, Range 6 East, Lincoln County, Wisconsin.

Dated this 19 day of May, 1976.

* ALSO INCLUDING THOSE LANDS LYING BETWEEN THE MEMBER LINES AND THE WATER'S EDGE OF CLEAR LAKE

STATE OF WISCONSIN
 LINCOLN COUNTY)

As owners, we hereby certify that we caused the land described on this plat to be surveyed, divided, mapped and dedicated as represented on the plat to the following: Town of Bradley; Lincoln County Planning Agency; Division of Local and Regional Development; Wisconsin Department of Natural Resources; Wisconsin Department of Health and Social Services; Division of Highways; Wisconsin Department of Transportation.

In presence of:
[Signature]
 day of May, 1976

(Seal)
 (Seal)

There are no objections to this plat with respect to Sect. 23A 13, 23B 14, 23C 15 of the Wisconsin Statutes, and to the provisions of Ch. 226, Sec. 14, 15 of the Wisconsin Statutes, and to the provisions of the Wisconsin Constitution and of the Local Governmental Organization Act, Chapter 190, Wisconsin Statutes.

[Signature]
 1976

