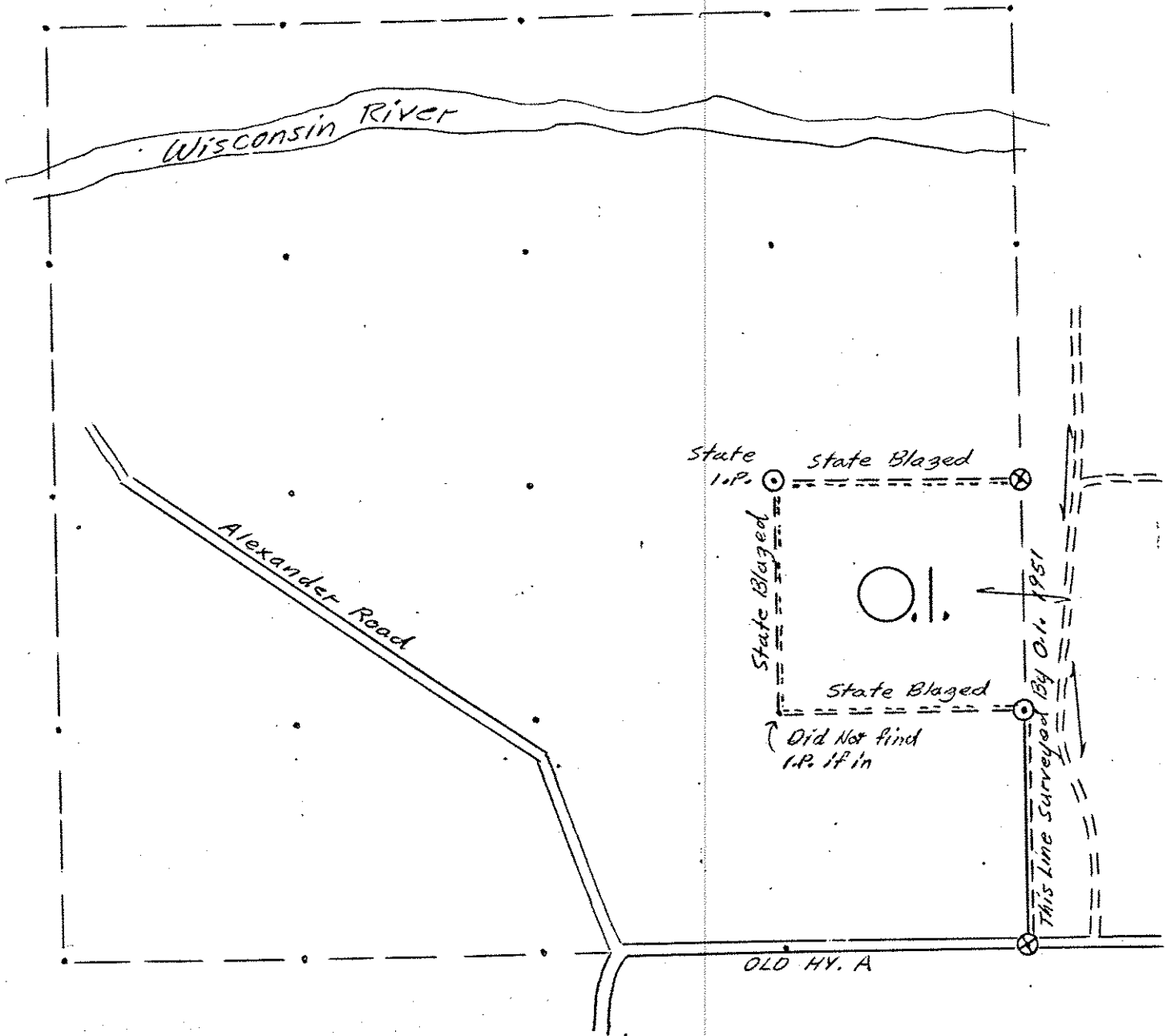


OWENS-ILLINOIS

DATE 2/27/76

T. 35 N R. 8 E SEC. 5

LINCOLN COUNTY, WIS.



LEGEND CORNERS & LINES

- ⊙ Iron Pipe or Cap
- ⊗ Concrete
- ⬠ Wood Post
- △ Stake
- × Hub
- + Spike

- ==== True-Blazed-Painted
- True Cut-Blazed
- Approximate-Painted
- Random
- xxxxx Fence
- - - R.O.W.

MAP BY

W.H. Stuth
Survey By O.I.
Stuth & Theiler

Scale 1 1/2" = 1320.0'

S407A