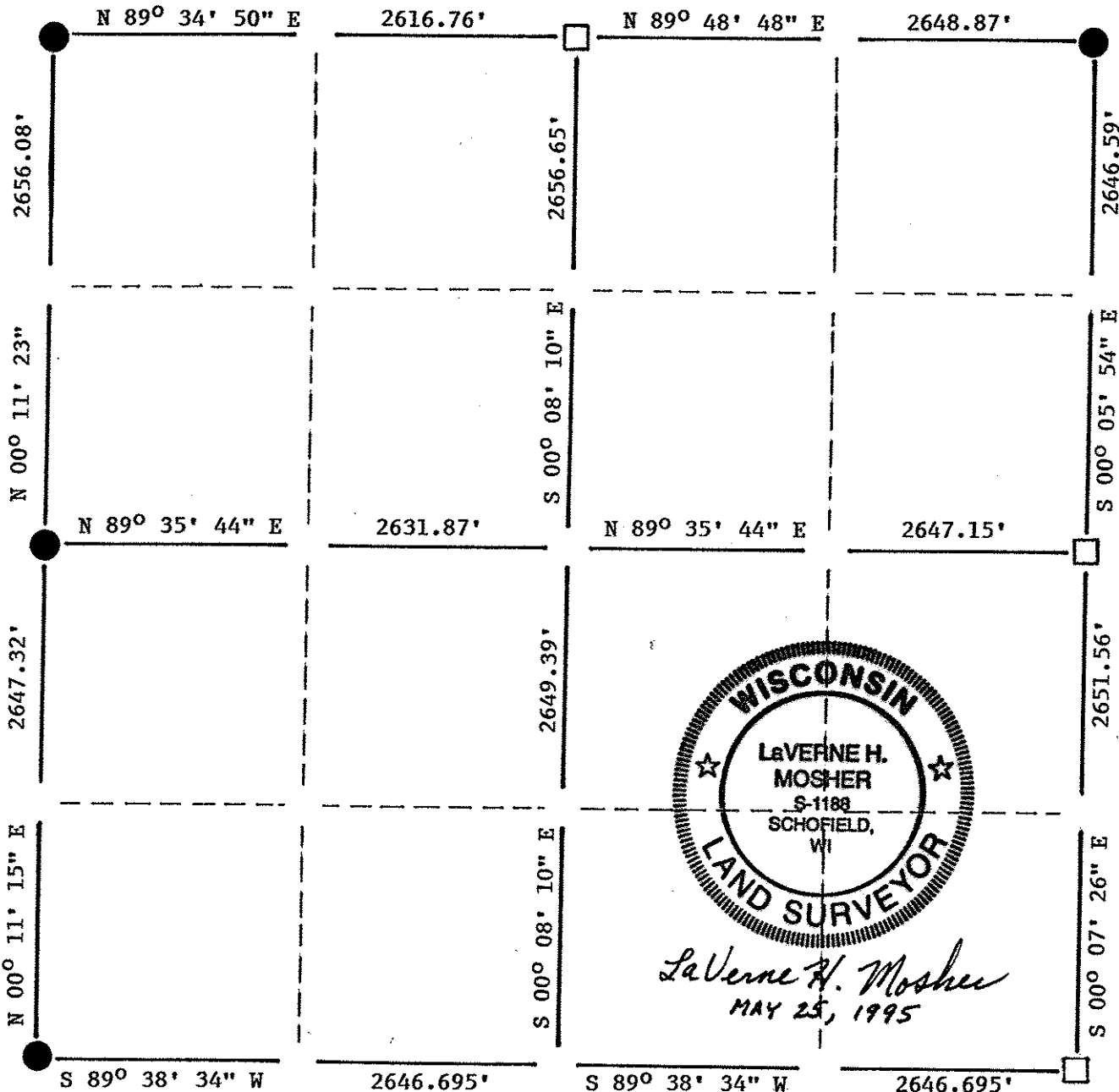


SCHLEY
TOWNSHIP



Laverne H. Mosher
MAY 25, 1995

LEGEND

- ⊕ - HARRISON CAST IRON MONUMENT
- - STONE OR CONCRETE MONUMENT
- - 2" IRON PIPE
- - 1" IRON PIPE
- - IRON BAR
- △ - R.R. SPIKE
- - PK NAIL
- - BERNTSEN MONUMENT
- ▲ - OTHER - _____

S376B

LHM SURVEYING

RECEIVED AT LINCOLN COUNTY COURTHOUSE THIS 25 DAY OF May 1995

OF May 1995

Dot [Signature]

TAX DESCRIPTION OFFICE