

PRESERVATION OF LANDMARKS

SECTION 59,635(7) WISCONSIN STATUTES
COUNTY Lincoln County

TOWN Pine River

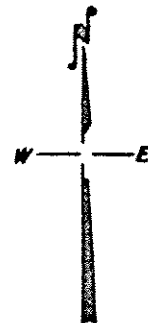
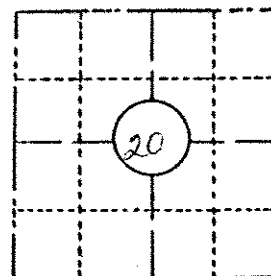
HIGHWAY C.T.H. W

SECTION NO. Part of Sec 20 school lot

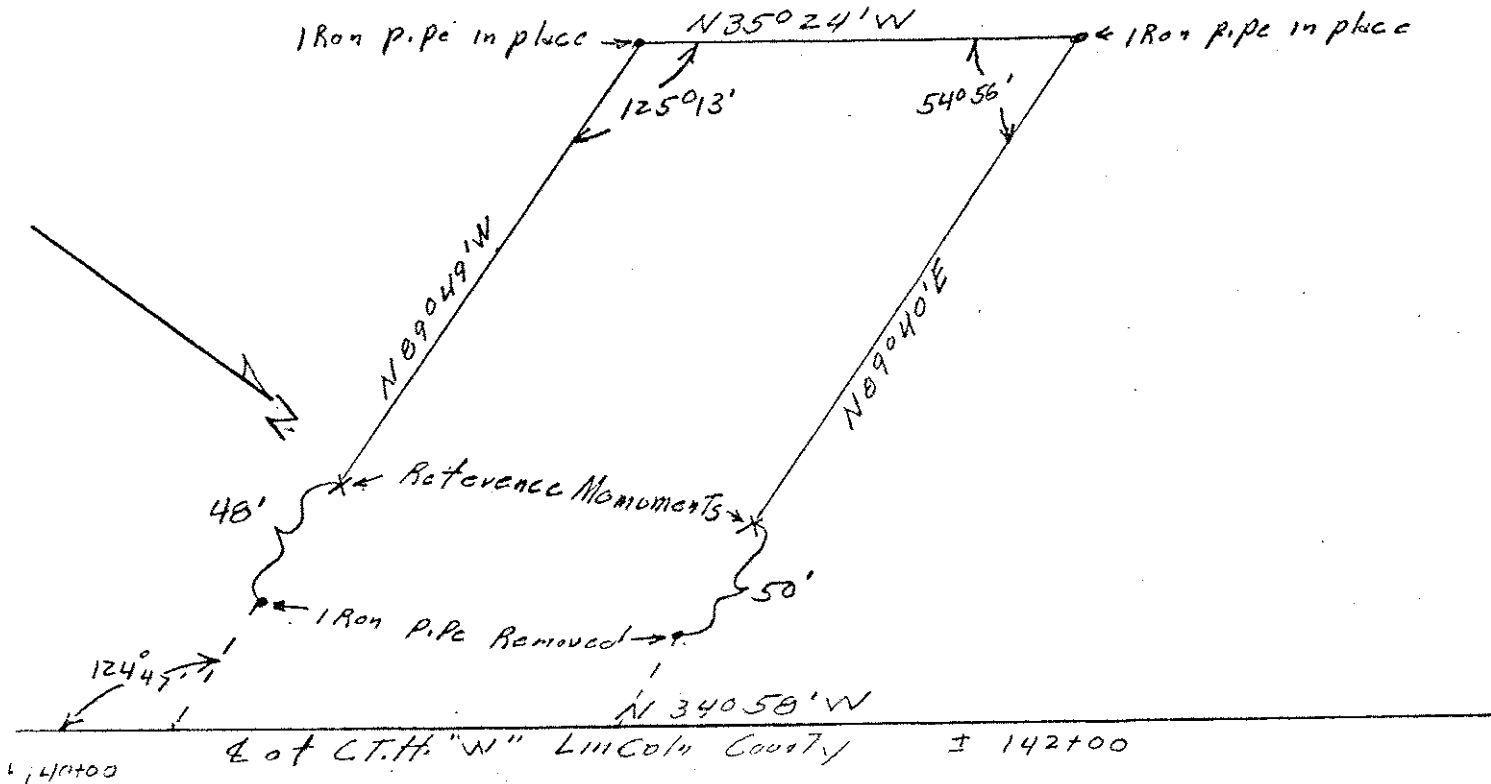
T. 21 N., R. 7 E. Property corners

TYPE OF LANDMARK Concrete

LOCATION INDICATED ON SKETCH X



LOCATION SKETCH



This space for copy of field notes or ties to the above described landmarks

Field notes or records filed in book no. 8660 page 32

at the State Highway Commission office.

City of Blinnenden, Oncide County,

Located or established by Richard H. Hettlebeck, 1965

Title Eng. II. Highways

County Clerk's Office _____ County, Wis. } ss

Received for record _____, 19____

Copy sent to County Surveyor _____, 19____

County Clerk

S370A