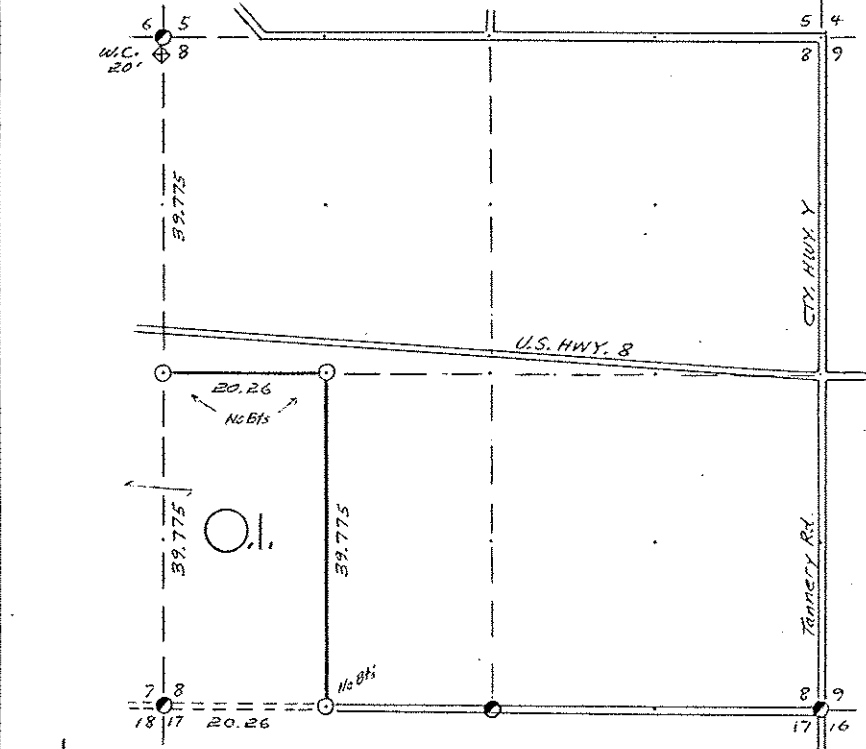


SEC. 8, T.35 N., R. 6 E.,
LINCOLN COUNTY, WIS.



COR. BL. CODE

A	B	C	D	E	
F	G	H	I	L	
K	M	N	O		
P	Q	R	S		
T	U	V	W	X	Y

SCALE:
0 5 10 20 CHAINS
0 330 660 1320 FEET

LEGEND: CORNERS & LINES

○	IRON PIPE OR CAP	---	BLAZED - PAINTED
⊗	CONCRETE	---	BLAZED
⊕	POST	---	APPR. - PAINTED
△	STAKE	---	RANDOM
†	SPIKE	---	FENCE
●	BY OTHERS		

Surveyed 1972

OWENS-ILLINOIS
TOWANAWK WISCONSIN
FOREST PRODUCTS DIVISION

Ownership Boundary Survey

DRAWN BY W.H. Smith

DATE 12/29/86

B FILE

STATEMENT Transit & Chain Surv. using corners
found for West line - Staff Compass & Chain
for interior lines.

RECORDS EXAMINED _____ DWG. NO. _____
Org. Surv.
County

Received from:
Nekoosa Papers Inc.
Forest District Office
Minocqua, WI
54548

S 349B

LOCAL CONTACTS _____

REMARKS _____

RECEIVED AT LINCOLN COUNTY
COURTHOUSE THIS 18 DAY
OF April 19 89.

Pat Meibe

TAX DESCRIPTION OFFICE

Prepared By W.H. Smith 3/6/87