

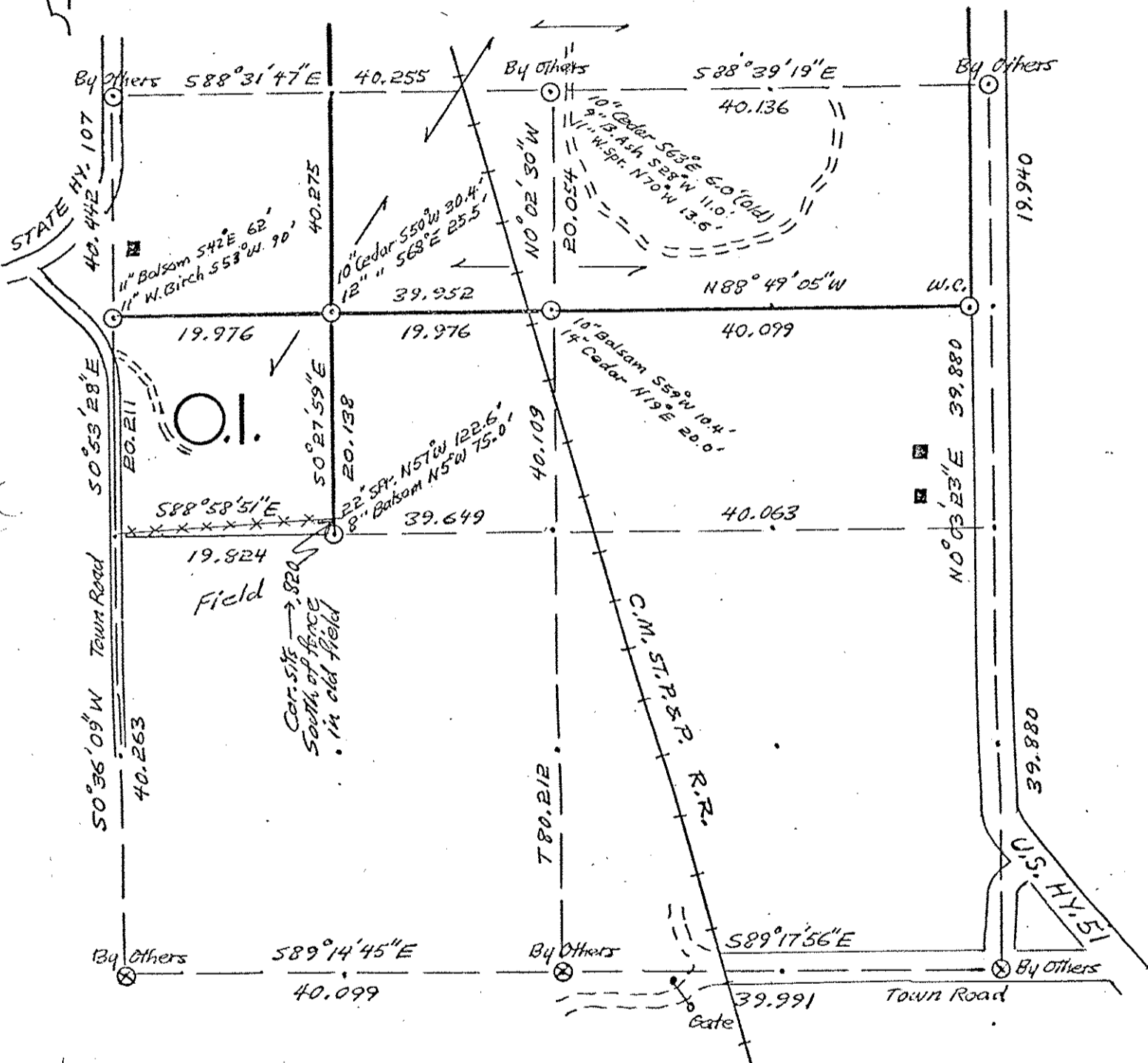
NW-571

OWENS-ILLINOIS

DATE 7/13/77

T.34 N R. 6 E SEC. 36

LINCOLN COUNTY, WIS.



LEGEND CORNERS & LINES

- ⊙ Iron Pipe or Cap
- ⊗ Concrete or Stone
- ⊠ Wood Post
- △ Stake
- X Hub
- + Spike

- ==== True - Blazed - Painted
- True Cut - Blazed
- Approximate - Painted
- Random
- xxxxx Fence
- - - R. O. W.

MAP BY

W.H. Stuth
Survey By O.I.
Stuth & Kreier

Scale $1\frac{1}{2}'' = 1320.0'$

RECEIVED AT LINCOLN COUNTY
COURTHOUSE THIS 12th DAY
OF Sept. 19 77.

Act. Priev

TAX DESCRIPTION OFFICE

S347B