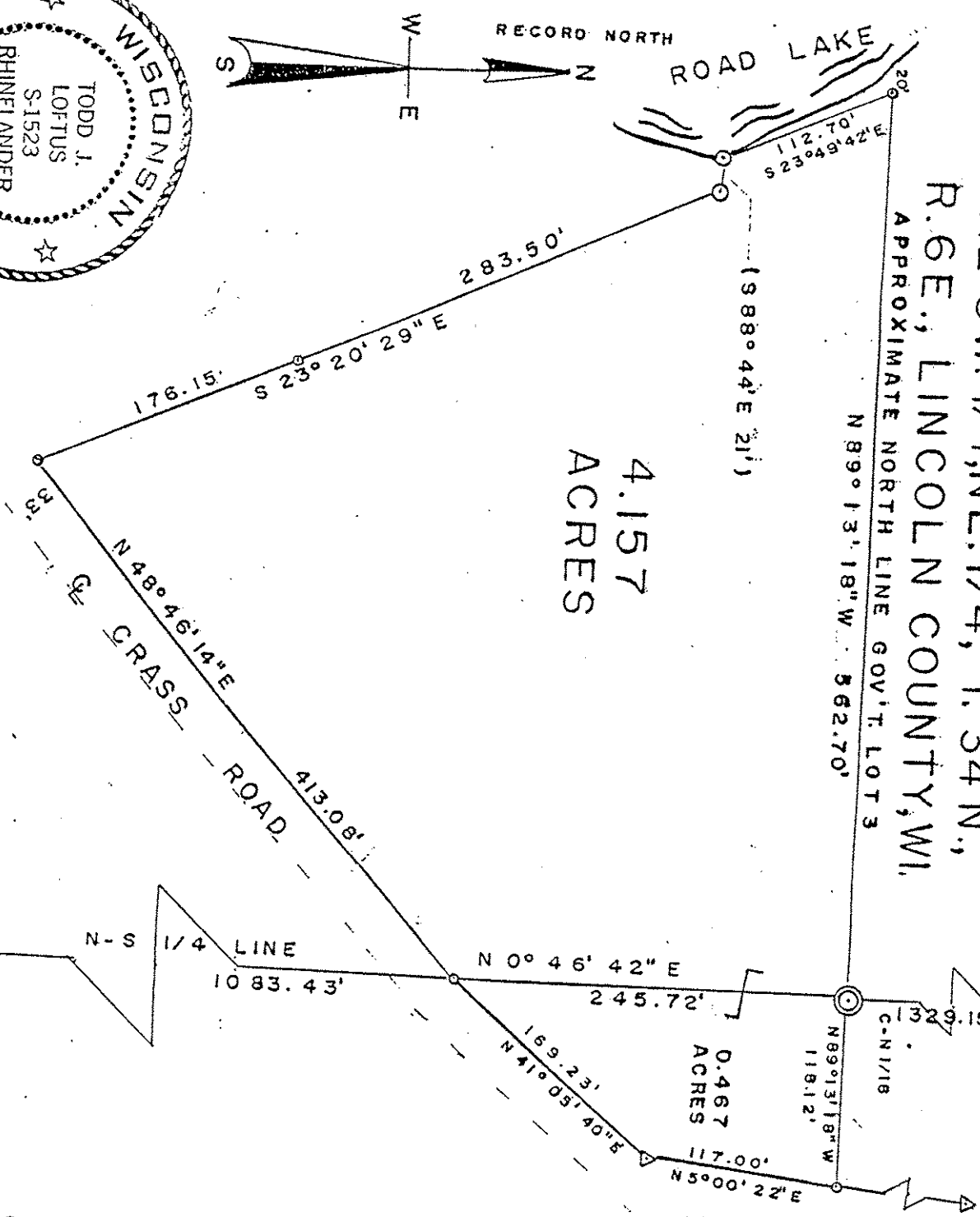


Section 13

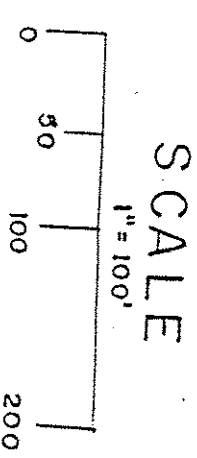
PART OF GOV'T. LOT 3 & 8  
THE SW. 1/4, NE. 1/4, T. 34 N.,  
R. 6 E., LINCOLN COUNTY, WI.  
APPROXIMATE NORTH LINE GOV'T. LOT 3

4.157  
ACRES

FOR  
VERONICA CRASS



- LEGEND**
- ⊙ SUBDIVISIONAL MONUMENT
  - IRON PIPE FOUND
  - ⊙ IRON PIPE SET
  - △ RIGHT OF WAY POST (RECORDED AS) 1/2/1982



*Todd J. Loftus*

*Rec 2-4-93*

S345B