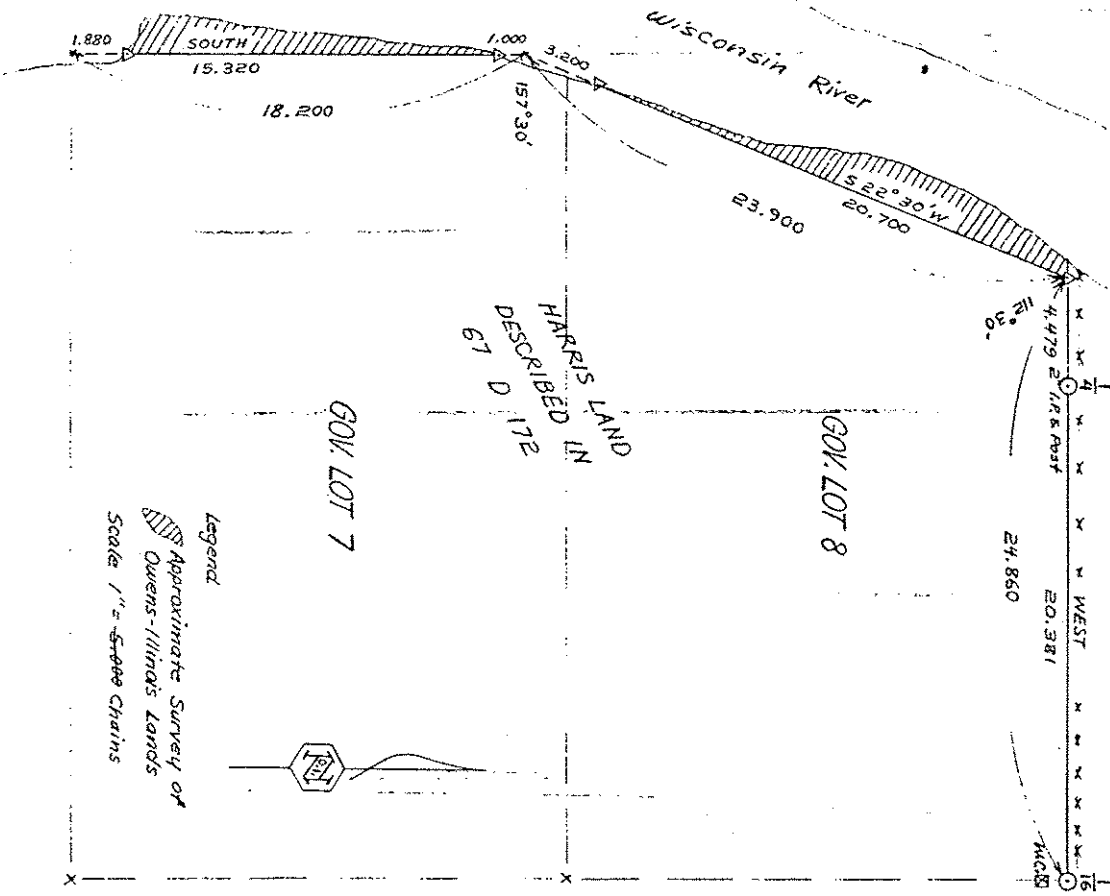


SEC. 26, T34N, R6E LINCOLN COUNTY



Prepared By A.H. Stutz 3/6/87

B FILE

STATEMENT Compass & Chain Survey using corners found

RECORDS EXAMINED None DWG. NO.

Revised from:
Alfred Paper Line
Forest District Office
Managers, WI 54458

339B

LOCAL CONTACTS

REMARKS

RECEIVED AT LINCOLN COUNTY
 COURTHOUSE THIS 18 DAY
 OF April 19 89.
Pat Heiler

TAX DESCRIPTION OFFICE