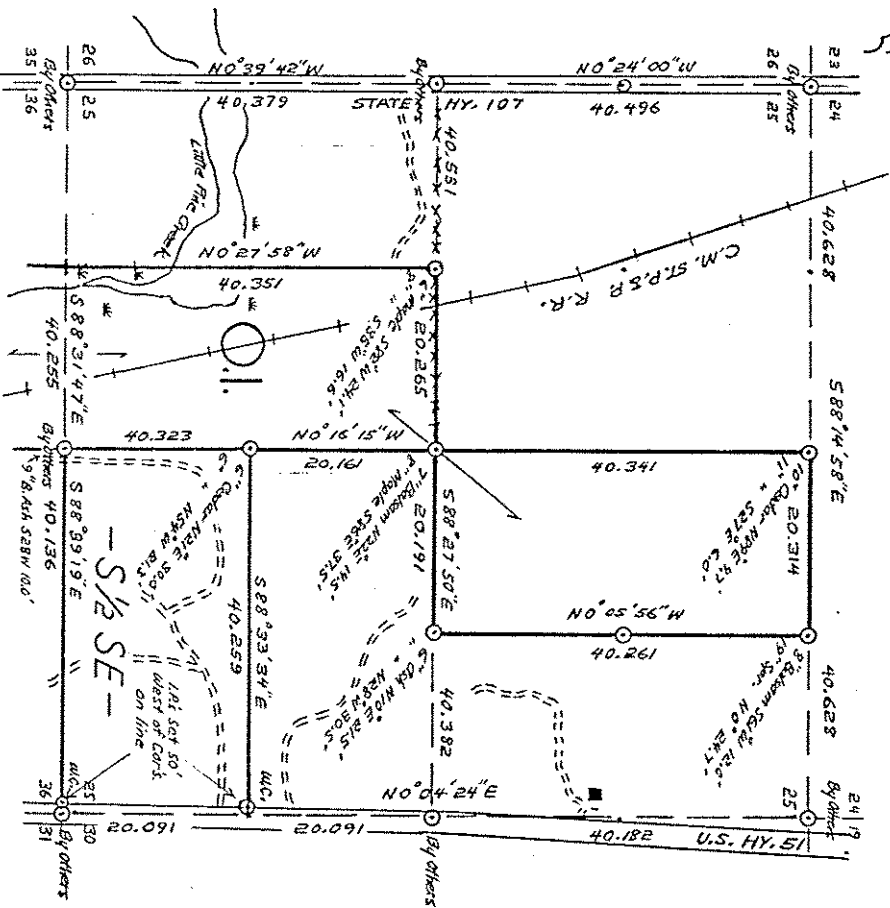


T.34 N R. 6 E SEC. 25
LINCOLN COUNTY, WIS.

OWENS, ILLINOIS

DATE 7/12/77



- LEGEND CORNERS & LINES
- ⊙ Iron Pipe or Cap
 - ⊙ Concrete
 - ⊕ Wood Post
 - △ Stake
 - X Hub
 - + Spike
- MAP BY
W.H. Staff
- True - Blazed - Painted
 - - - Approximate - Blazed
 - Random
 - xxxxx Fence
 - R.O.W.
- Scale 1/2" = 1320.0'

Prepared By W.H. Staff 3/6/87

B FILE

STATEMENT Transit & Chain Surv. using corners found.

RECORDS - EXAMINED _____ DWG. NO. _____

Org. Surv.

County

*Secured from:
The Board of Public Works
First Northwest Office
Plymouth, Wis
54548*

LOCAL CONTACTS _____

REMARKS _____

RECEIVED AT LINCOLN COUNTY
COURTHOUSE THIS 18 DAY
July 1987

Pat Mueller

AX DESCRIPTION OFFICE

S339A