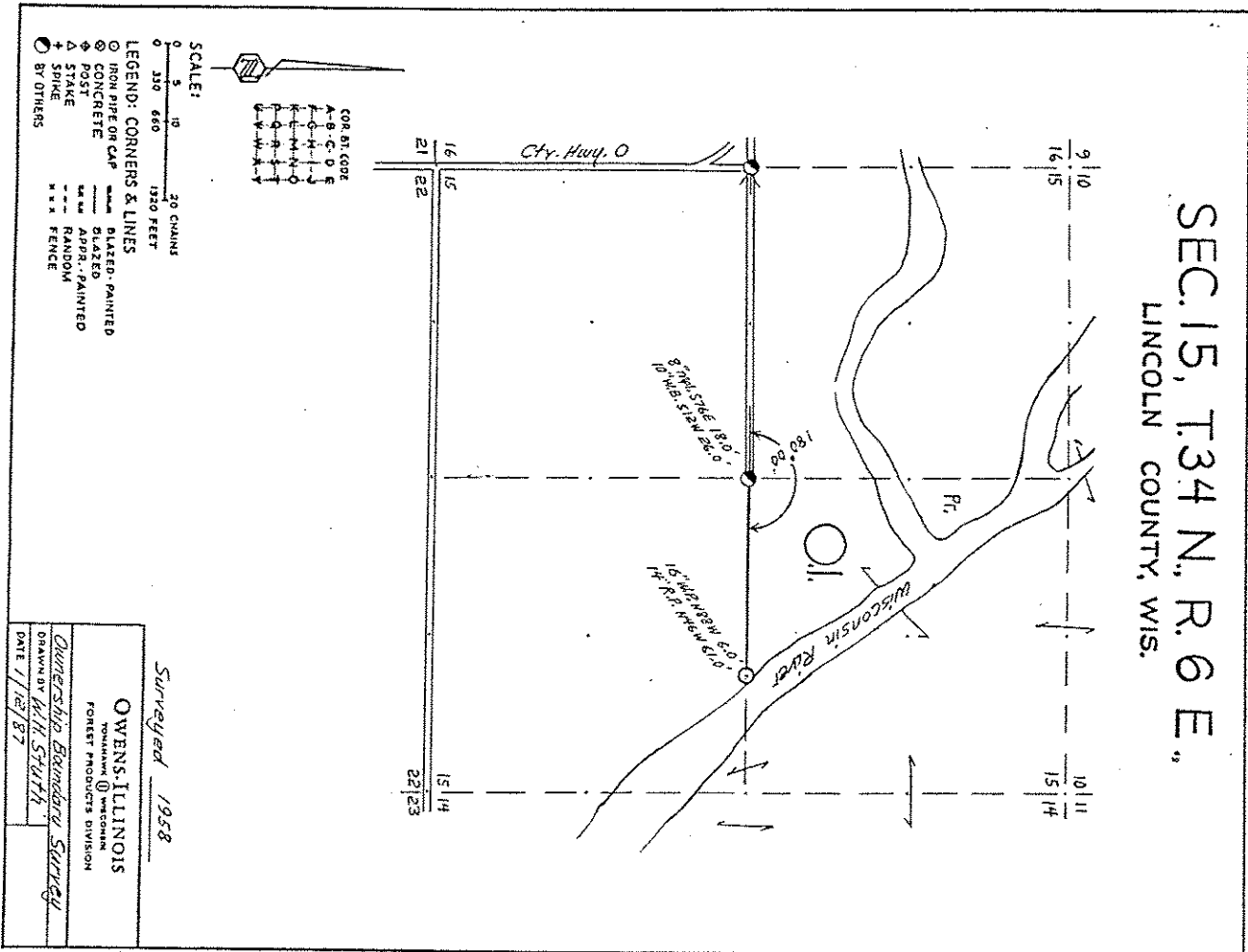


SEC. 15, T. 34 N., R. 6 E.,  
LINCOLN COUNTY, WIS.



Prepared By *W. H. Stuth* 3/6/87

**B FILE**

STATEMENT *Transit Surv using corners found*

RECORDS EXAMINED \_\_\_\_\_ DWG. NO. \_\_\_\_\_

*None*

*Revised from:*

*Theresa Capri Line.  
Forest District Office  
Plymouth, WI 53448*

**5338A**

LOCAL CONTACTS \_\_\_\_\_

REMARKS \_\_\_\_\_

RECEIVED AT LINCOLN COUNTY

COURTHOUSE THIS \_\_\_\_\_ DAY

OF *18* *19* *87*

*Paul Priebe*

TAX DESCRIPTION OFFICE