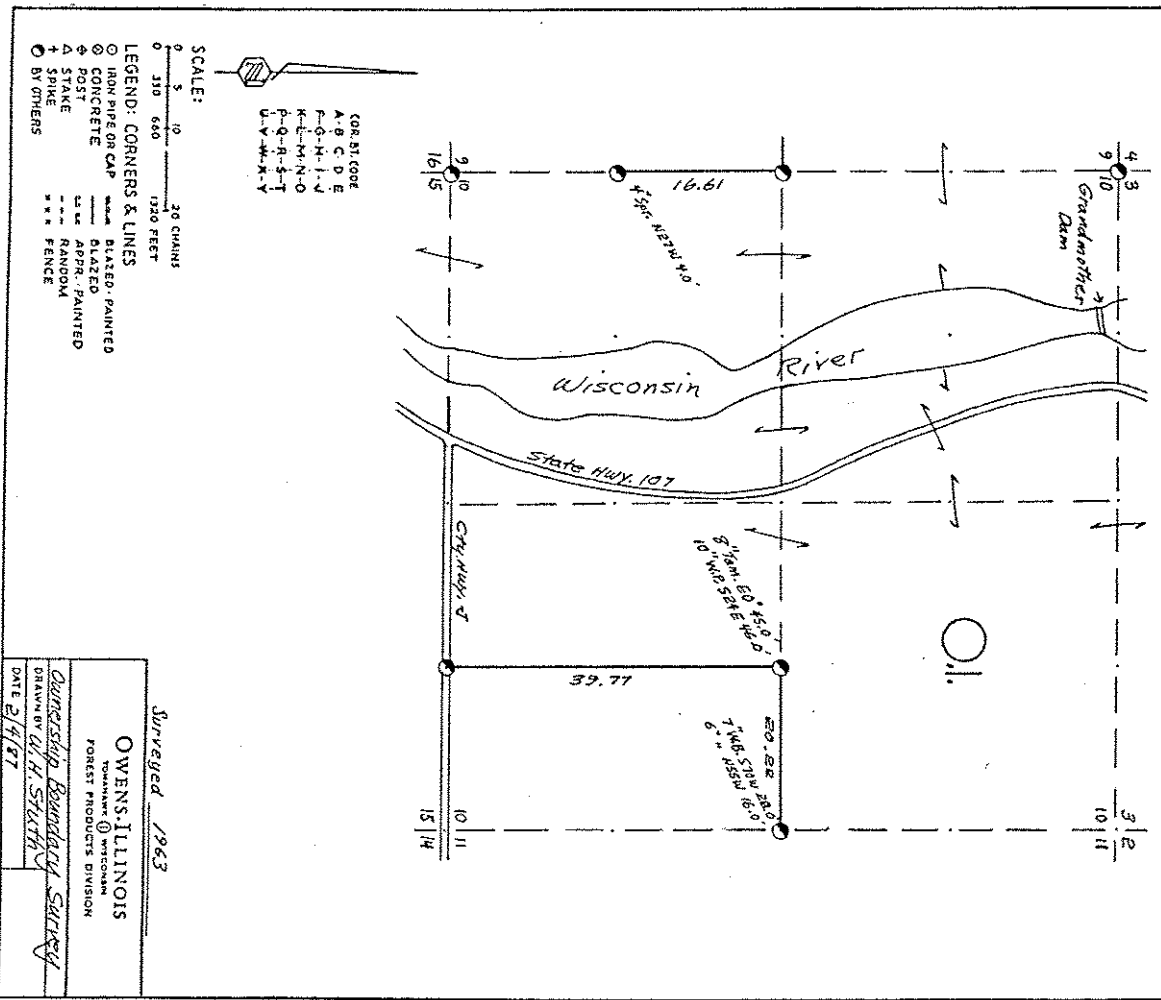


SEC. 10, T. 33 N., R. 6 E.,  
LINCOLN COUNTY, WIS.



SCALE: 20 CHAINS  
1320 FEET

LEGEND: CORNERS & LINES  
 O IRON PIPE OR CAP  
 X CONCRETE  
 + POST  
 A STAKE  
 B OTHERS

LEGEND: PAINTED  
 --- BLAZED  
 --- APPR. PAINTED  
 --- RANDOM  
 \*\*\* FENCE

LEGEND: CORNERS  
 A-O B-I C-D E  
 F-G H-I J  
 K-L M-N O  
 P-Q R-S T  
 U-V W-X Y

Surveyed 1963  
**OWENS-ILLINOIS**  
 TOWNNAME  
 FOREST PRODUCTS DIVISION  
 Drawn by W.H. Strick  
 DATE 2/4/67

Prepared By W.H. Strick 3/6/67

B FILE

STATEMENT Compass & Chain Surv. using Corners  
Found

RECORDS EXAMINED \_\_\_\_\_ DNG. NO. \_\_\_\_\_

Org. Surv. \_\_\_\_\_

County \_\_\_\_\_

Surveyed from \_\_\_\_\_

Flora Park Paper Inc.  
Forest Products Office  
Managers, WI 54548

LOCAL CONTACTS \_\_\_\_\_

REMARKS \_\_\_\_\_

RECEIVED AT LINCOLN COUNTY  
 COURTHOUSE THIS 18 DAY  
 OF March 19 67.  
W.H. Strick  
 TAX DESCRIPTION OFFICE

S337A