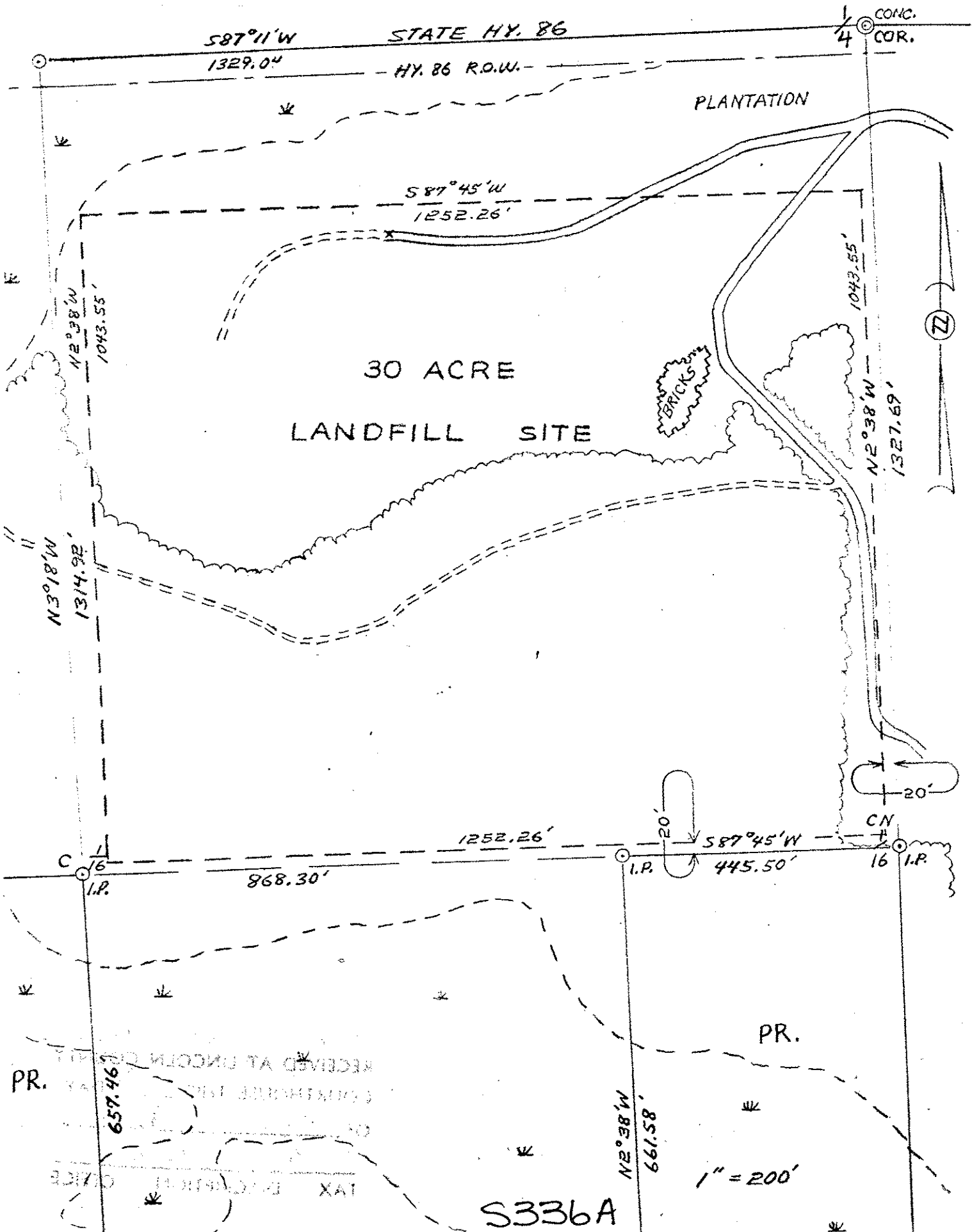


9-34-6



S87°11'W
1329.04'

STATE HY. 86
HY. 86 R.O.W.

1/4 CONC. COR.

PLANTATION

S87°45'W
1252.26'

30 ACRE
LANDFILL SITE

BRICKS

1043.55'
N2°38'W
1327.69'

72

N3°18'W
1314.92'

1252.26'

20'
S87°45'W
445.50'

CN

868.30'

PR.

657.46'

N2°38'W
661.58'

1" = 200'

S336A

RECEIVED AT LINCOLN COUNTY
 TAX DEPARTMENT OFFICE
 PR.