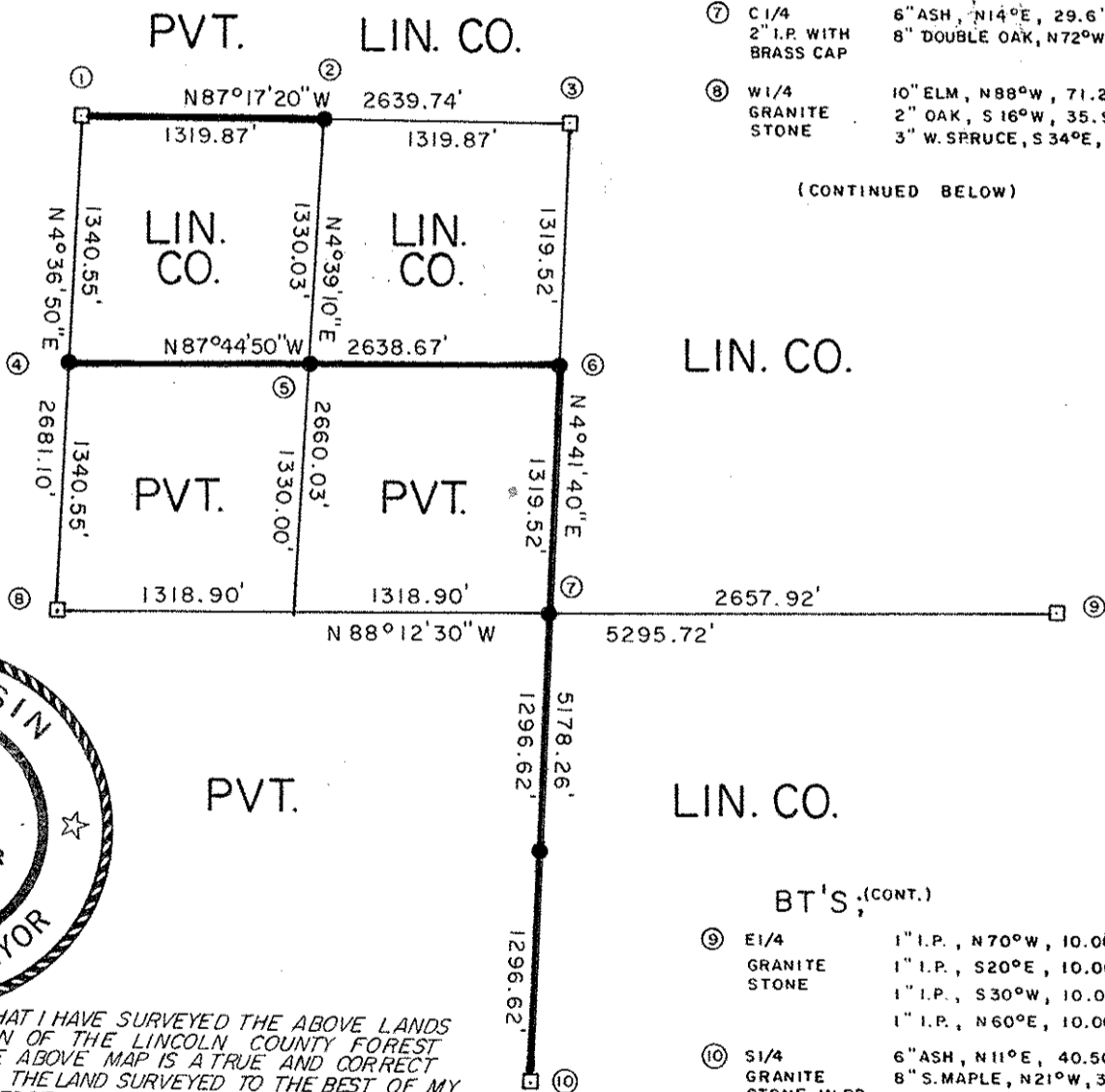


Stock No. 26273

Survey Plat of  
SECTION 23,  
TOWNSHIP 33 NORTH,  
RANGE 5 EAST  
LINCOLN COUNTY,  
STATE OF WISCONSIN

N



- BT'S;**
- ① NW SEC. COR. GRANITE STONE 9" S. MAPLE, S43°E, 13.3'  
3" H. MAPLE, S56°W, 13.5'  
6" ASH, N50°W, 10.8'  
12" OAK, S11°E, 40.0'  
G & W POST, 3', SE
  - ② N1/16 NW 2" I.P. WITH BRASS CAP 12" OAK, S61°W, 19.7'  
5" S. MAPLE, S83°E, 14.0'
  - ③ N1/4 GRANITE STONE 12" OAK, S69°E, 15.84'  
9" S. MAPLE, SOUTH, 36.12'  
10" ASH, S77°W, 25.18'  
7" S. MAPLE, NORTH, 11.10'
  - ④ W1/16 NW 2" I.P. WITH BRASS CAP 16" OAK, N8°E, 47.10'  
5" ASPEN, S20°W, 16.5'
  - ⑤ C1/16 NW 2" I.P. WITH BRASS CAP 7" OAK, N46°E, 7.6'  
10" OAK, S45°E, 29.17'
  - ⑥ CN1/16 2" I.P. WITH BRASS CAP 11" BASSWOOD, N62°W, 29.15'  
8" H. MAPLE, N31°E, 17.6'
  - ⑦ C1/4 2" I.P. WITH BRASS CAP 6" ASH, N14°E, 29.6'  
8" DOUBLE OAK, N72°W, 27.1'
  - ⑧ W1/4 GRANITE STONE 10" ELM, N88°W, 71.20'  
2" OAK, S16°W, 35.95'  
3" W. SPRUCE, S34°E, 29.40'

(CONTINUED BELOW)

LIN. CO.

LIN. CO.

**BT'S; (CONT.)**

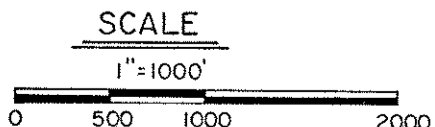
- ⑨ E1/4 GRANITE STONE 1" I.P., N70°W, 10.00'  
1" I.P., S20°E, 10.00'  
1" I.P., S30°W, 10.00'  
1" I.P., N60°E, 10.00'
- ⑩ S1/4 GRANITE STONE IN RD. 6" ASH, N11°E, 40.50'  
8" S. MAPLE, N21°W, 36.39'  
14" S. MAPLE, S47°W, 68.08'  
14" Y. BIRCH, S50°E, 102.55'



I HEREBY CERTIFY THAT I HAVE SURVEYED THE ABOVE LANDS UNDER THE DIRECTION OF THE LINCOLN COUNTY FOREST DEPARTMENT, AND THE ABOVE MAP IS A TRUE AND CORRECT REPRESENTATION OF THE LAND SURVEYED TO THE BEST OF MY BELIEF AND KNOWLEDGE.

*William Immich* DECEMBER 17, 1984  
William Immich date

- Found Granite Monument
- Set 2" Brass Capped Iron Pipe



**Genisot & Associates Inc.**  
1512 Eagle St., Rhinelander, Wis.  
Job no. 7482  
Drawn by: M. J. H.

S319A