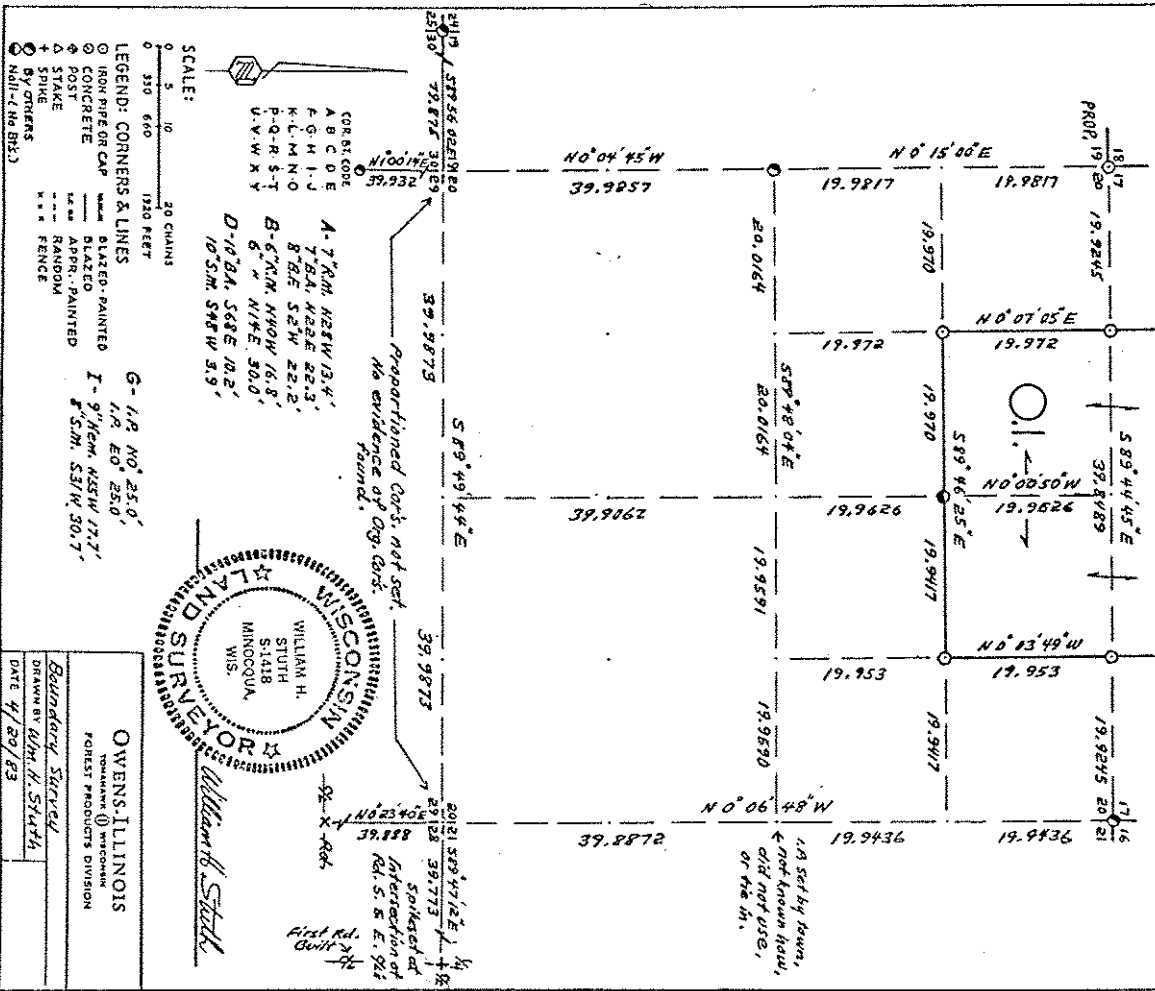
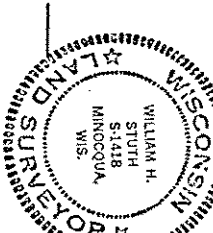


SEC. 20, T. 32 N., R. 5 E.,
LINCOLN COUNTY, WIS.



SCALE:
0 5 10
0 350 650 1200 FEET
30 CHAINS

LEGEND: CORNERS & LINES
 ○ IRON PIPE OR CAP
 ⊙ CONCRETE
 ⊕ POST
 △ STAKE
 ⊕ SPIKE
 ○ BY OWNERS
 ○ (WITH NO B'S)



OWENS-ILLINOIS
 TOWNMAN OF WISCONSIN
 FOREST PRODUCTS DIVISION
 Boundary Surveyed
 DRAWN BY Alm H. Stahl
 DATE 4/20/83

Prepared By W.H. Stahl 3/6/87

B FILE

STATEMENT Transit & Chain Surv using corners & evidence found

SEE large work sheet in file

RECORDS EXAMINED _____ DWG. NO. _____

County _____

Received from:
Robert Capron Inc.
1st post. District Office
Managers, WI 54548

LOCAL CONTACTS _____

REMARKS _____

RECEIVED AT LINCOLN COUNTY
 COURTHOUSE THIS 18 DAY
 OF April 19 87.

TAX DESCRIPTION OFFICE

18A